



DIGITUS DN-3028 USB Type-C Gigabit Ethernet Adapter 2.5G USB-C + USB A USB3.1/3.0 Installation Guide

[Home](#) » [DIGITUS](#) » DIGITUS DN-3028 USB Type-C Gigabit Ethernet Adapter 2.5G USB-C + USB A USB3.1/3.0
Installation Guide 



**USB Type-C™ Gigabit
Ethernet Adapter 2.5G,
USB-C™ + USB A (USB3.1/3.0)
Quick Installation Guide
DN-3028**

Contents

- 1 INTRODUCTION**
- 2 PACKAGE CONTENTS**
- 3 CONNECTIONS AND INDICATORS**
- 4 FEATURES**
- 5 TECHNICAL FEATURES**
- 6 SUPPORTED OPERATING SYSTEMS FOR
COMPUTERS**
- 7 HOW TO CONNECT**
- 8 DRIVER INSTALLATION NOTICE**
- 9 Documents / Resources**
- 10 Related Posts**



INTRODUCTION

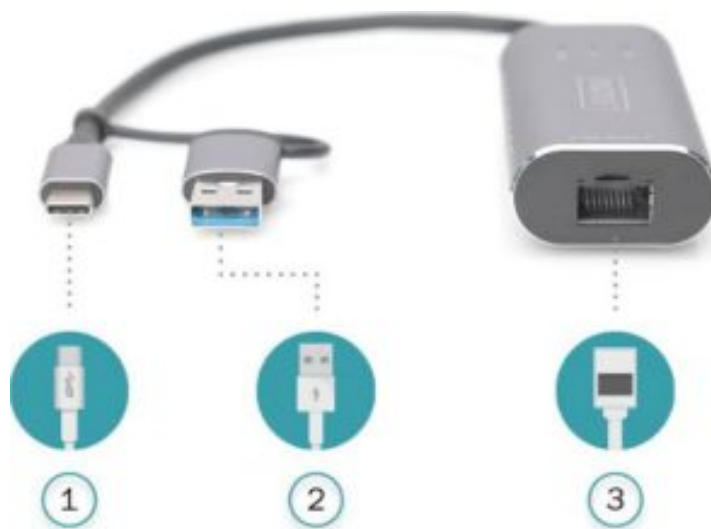
With the USB Type-C™ Gigabit Ethernet adapter, you can add a network connection to your notebook or desktop PC and achieve speeds of up to 2.5 Gbps. Plug and Play – Just plugin and get started. The power supply is provided conveniently via the USB-C™ interface. In addition, the USB A included in delivery allows for use with older USB jacks, downward compatible with USB 3.0 and below. The adapter is compatible with Windows, macOS, Linux, Android, and iOS. Suitable for online gamers, live streamers, 4K video applications, and everyone who needs high network data rates with optimal performance. Thanks to its compact dimensions, the adapter also makes an ideal travel companion. The finishing touch is its elegant and resistant aluminum housing with lateral openings for improved heat dissipation and performance.

PACKAGE CONTENTS

- 1 x USB Type-C™ Gigabit Ethernet Adapter 2.5G, USB-C™ + USB A (USB3.1/3.0)
- 1 x Instructions

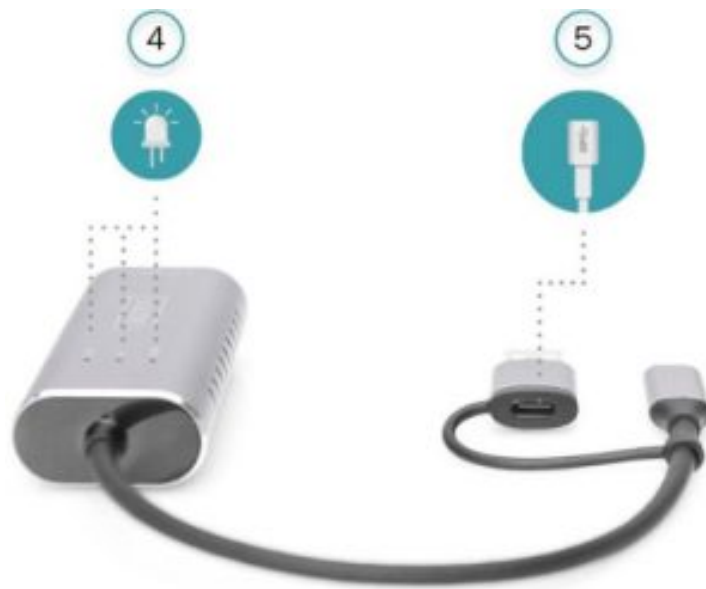
CONNECTIONS AND INDICATORS

Front view



1. USB Type-C™ plug
2. USB A (USB 3.0) plug
3. RJ45 jack (2.5G)

Back view



4. LED Indicators for 100 / 1000 / 2500 Mbps

5. USB Type-C™ jack

FEATURES

- USB-C™ is compatible with USB 3.1/3.0 standard and suitable for older USB connections thanks to USB plug-on adapter for USB-C™ plug
- Improved chipset for enhanced power and performance
- LED display of currently used network bandwidth
 - 100/1000/2500 Mbps
- The high data rate, ideal for streamers, online gamers, or generally high data traffic
- No power adapter is needed
 - Power supply is provided via the USB-C™ interface
- Compatible with macOS, Linux, Android, and iOS systems
- Compact dimensions and elegant design – ideal for travel, business trips or on vacation
- Aluminum housing with passive heat dissipation thanks to lateral ventilation slits.
- Use your computer without a network connection or with a defective network port for network applications

TECHNICAL FEATURES

- Supports USB-C™ connections with USB 3.1
- Supports USB A connections with USB 3.0
- Gigabit data transmission with up to 2.5 Gbps
- RJ45 Ethernet jack with LED feature display
- Supported data transfer rates: 10/100/1000/2500 Mbps
- Chipset: RTL8156B(improved power, data flow, and performance)
- Supports: Wake-On-LAN, IPv4/IPv6 protocols, IEEE 802.3/IEEE 802.3u/IEEE 802.3ab/IEEE 802.3az/IEEE 802.3bz(Energy Efficient Ethernet)
- Full duplex / Half-duplex data flow control – auto-negotiation
- Auto MDI-X: Supports patch and crossover cable, automatic detection, and switching
- Compatible with Windows, macOS, Linux, Android, and iOS
- Operating temperature: 0 °C to +40 °C

- Operating humidity: 20% to 80% (non-condensing)
- Power supply via USB-C™ (4.75 – 5.25 V)
- Stand-by power consumption: <60 mA
- Power consumption during operation: <80 mA @ 10Mbps,
<130 mA @ 100Mbps, <300mA @ 1000Mbps,
<460 mA @ 2.5 Gbps
- Cable length: 15 cm
- Material: Stable and resistant aluminum housing (anodized)
- Dimensions: L 110 x W 39.8 x D 16.6 mm
- Weight: 55 g
- Color: Gray

SUPPORTED OPERATING SYSTEMS FOR COMPUTERS

- Windows: 7 / 8 / 8.1 / 10 / Vista/ XP (32/64bit)
- Mac: macOS / Mac OS X 10.6 to 10.15 version
- Linux
- Android

HOW TO CONNECT

- Connect the adapter directly to your computer or laptops
- Connect your CAT 5e/CAT 6 network cable to a LAN or router
- No extra software drivers are needed
- No external power is required.

DRIVER INSTALLATION NOTICE

Ordinarily, the corresponding driver is installed automatically when inserting the device. The driver can be downloaded from our Website if you wish to manually install it.

Hereby Assmann Electronic GmbH declares that the Declaration of Conformity is part of the shipping content. If the Declaration of Conformity is missing, you can request it by post under the below-mentioned manufacturer address.



www.assmann.com

ASSMANN Electronic GmbH
Auf dem Schüffel 3
58513 Lüdenscheid, Germany

Documents / Resources

DIGITUS

USB Type-C™ Gigabit
Ethernet Adapter 2.5G,
USB-C™ + USB A (USB3.1/3.0)



Quick Installation Guide
DN-3028

[DIGITUS DN-3028 USB Type-C Gigabit Ethernet Adapter 2.5G USB-C + USB A USB3.1/3.0](#)

[pdf] Installation Guide

DN-3028 USB Type-C Gigabit Ethernet Adapter 2.5G USB-C USB A USB3.1 3.0