



DIGITUS DN-13001-1 Parallel Printer Fast Ethernet Print Server Installation Guide

[Home](#) » [DIGITUS](#) » DIGITUS DN-13001-1 Parallel Printer Fast Ethernet Print Server Installation Guide 

Contents

- [1 DIGITUS DN-13001-1 Parallel Printer Fast Ethernet Print Server](#)
- [2 INSTALLATION](#)
- [3 Documents / Resources](#)
 - [3.1 References](#)
- [4 Related Posts](#)

DIGITUS[®]

DIGITUS DN-13001-1 Parallel Printer Fast Ethernet Print Server

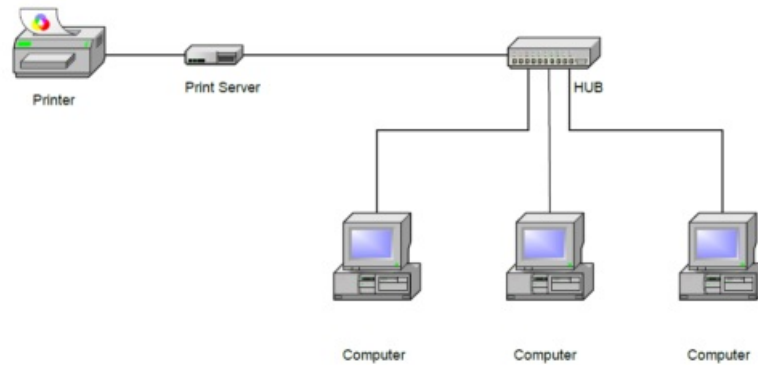


INSTALLATION

Before you start, you should prepare the following items:

- One Windows-based PC with print server setup CD
- One printer
- One printer cable
- One HUB

Wired Network with Print Server:



Hardware Installation:

1. Turn off the printer's power.
2. Connect the print server to your printer with the supplied printer cable.
3. Turn the printer's power on.
4. Plug the AC power adapter into the power connector on the print server.
5. Wait 10 seconds as part of the print server's Power On Self Test (POST).

Software Installation:

1. To enable network communication with print server,
your computer must have a proper IP address, e.g. 192.168.0.100
2. Insert the setup CD into your CD-drive, and the following message appears.



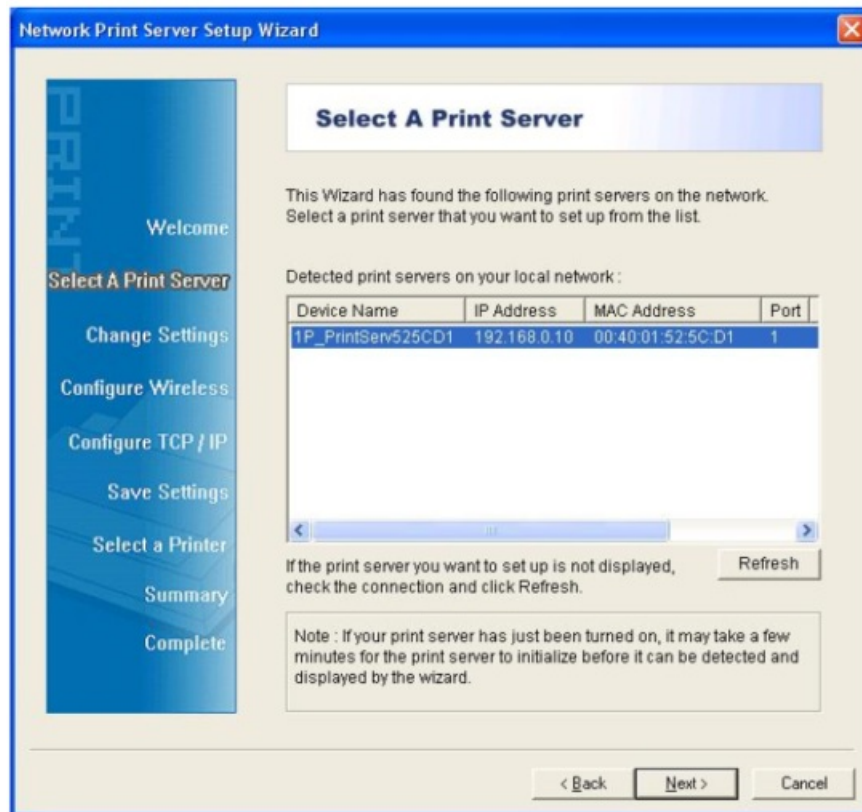
Note:

To setup wizard under Windows Vista, you have to choose the Run as administrator by right-click the icon on desktop.

3. Choose Setup Wizard to install the print server and configure the connected printer.



4. Click Next, the wizard will automatically discover the print server.
5. From the Select A Print Server screen, select the print server that you want to configure and click Next.



6. On the Change Settings screen, select No or Yes:



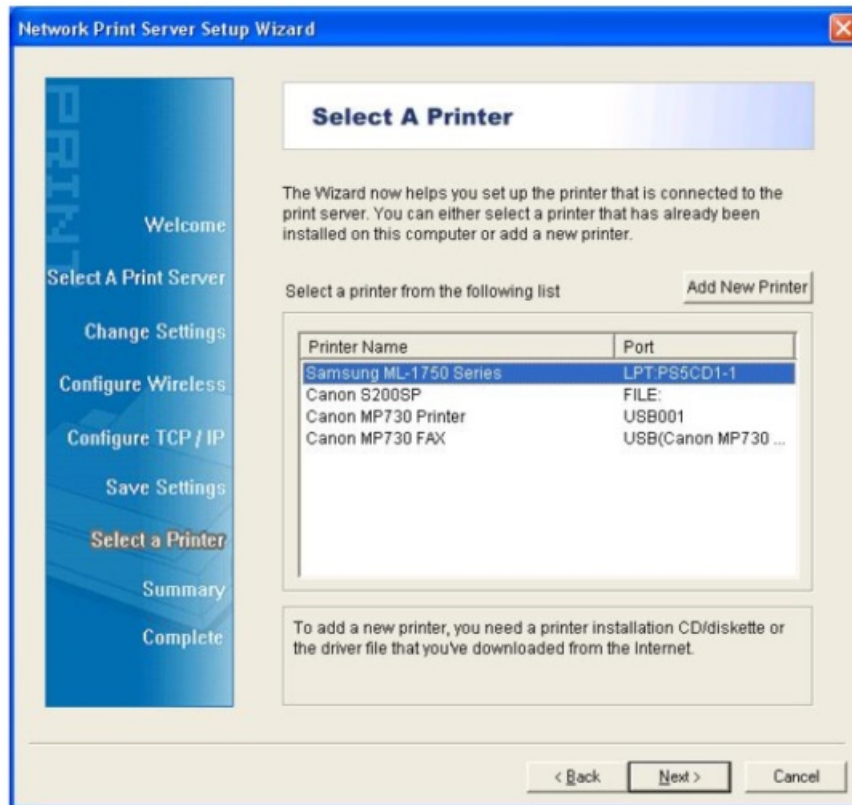
Click No if you want the print server to keep using the default IP address and keep the default settings, and then click Next.

- IP address: 192.168.0.10
- Subnet Mask: 255.255.255.0

Click Yes if you want to change IP address to the print server, and then click Next.

7. On the Select A Printer screen, select an already configured printer from the list, click Next and then Finish to

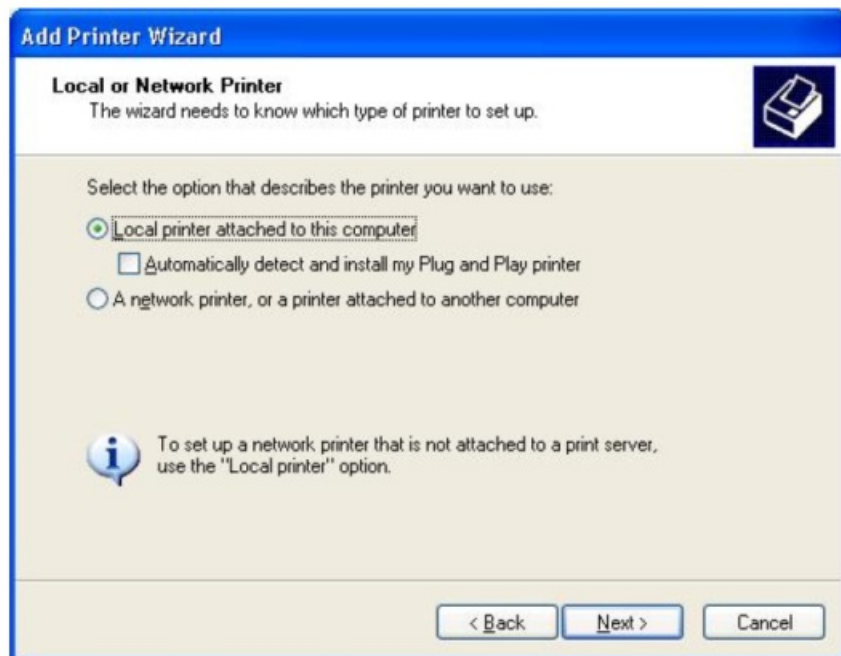
complete the installation. Or Select Add New Printer if the print server is connected to a printer that hasn't been installed before and does not appear in the list.



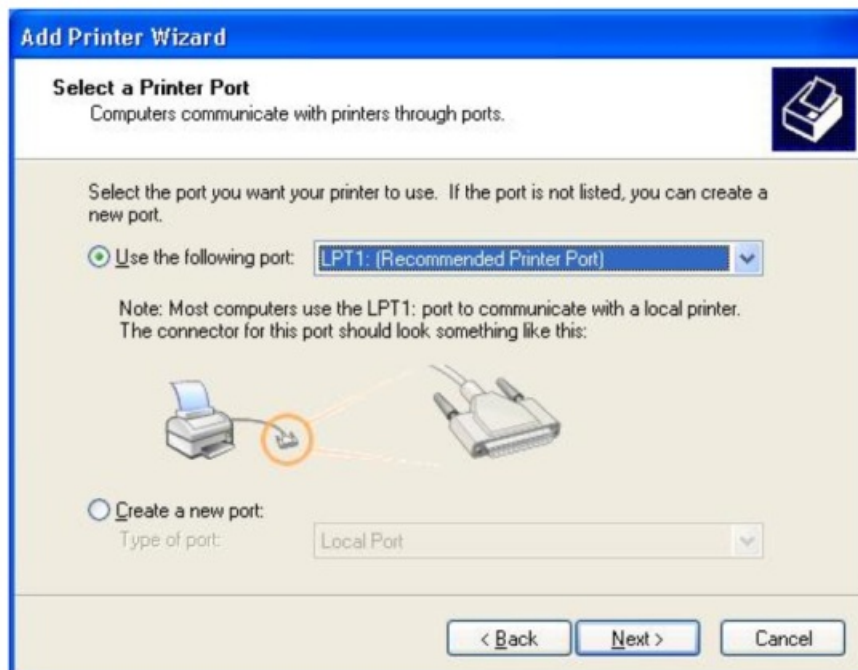
8. Click Add New Printer to launch Windows Add Printer Wizard.



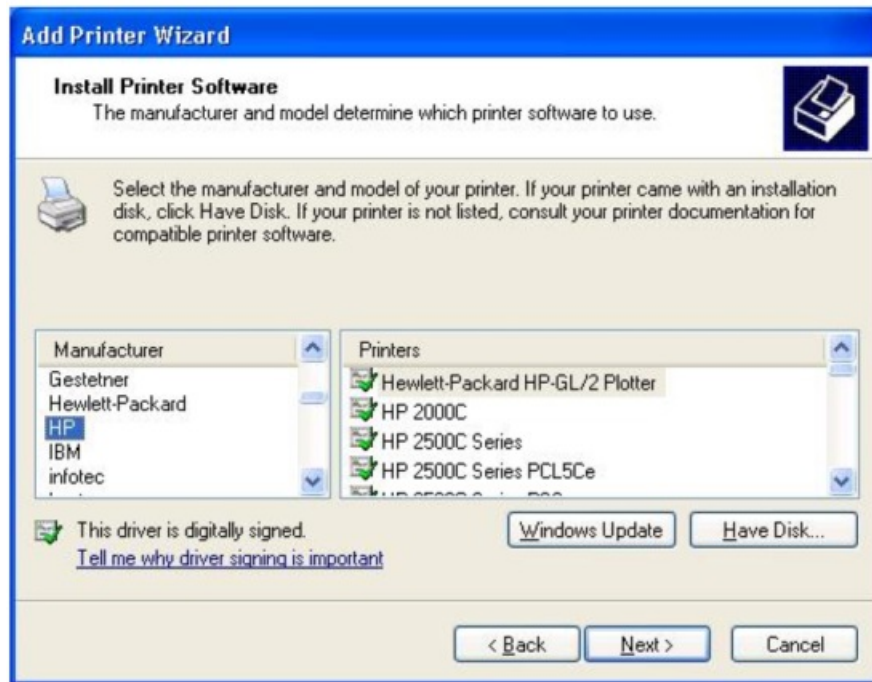
9. Click Next and select Local Printer, make sure the Automatically detect and install my Plug and Play printer check box is NOT checked. Then click Next.



10. Make sure the Use the following port radio button is clicked and select LPT1: (Recommended Printer Port) from the pull-down list. Then click Next.



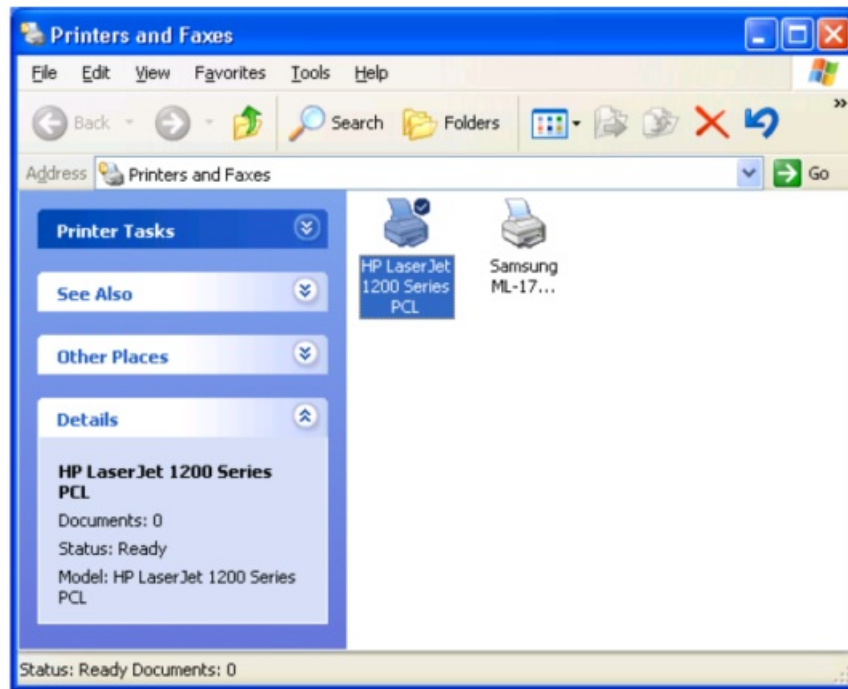
11. Select Manufacturer and Printer from the lists of printer's driver. Then click Next.



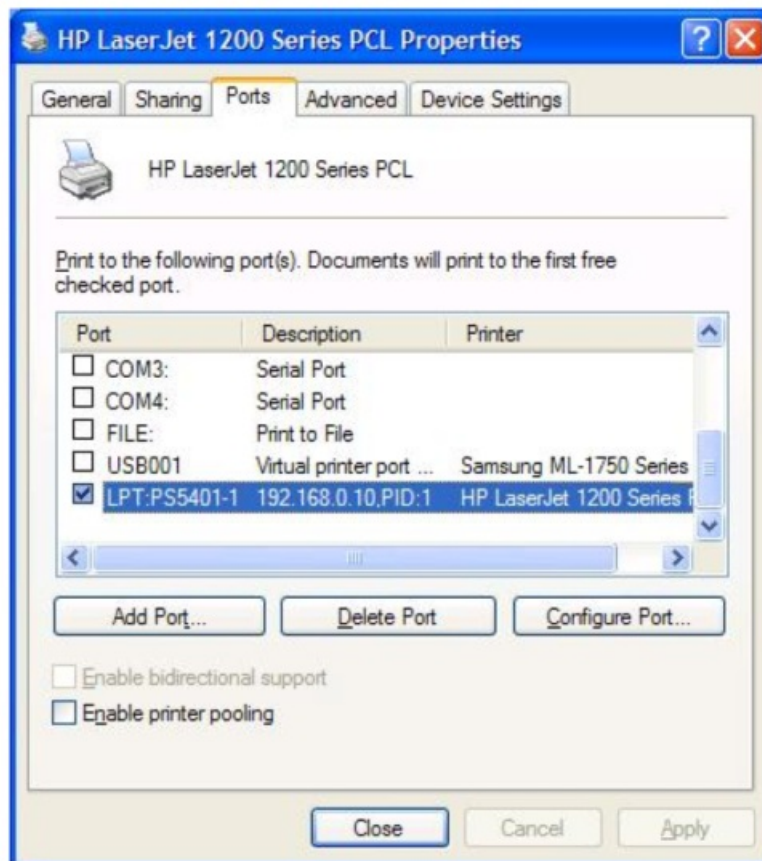
12. If you already have the printer's driver installed, you will be asked whether to keep it or to replace it. Click Next. Supply a name for the printer and choose whether you want to make it your default printer. Then click Next.
13. Then, choose whether you want to share the printer with other network users, print a test page (please select No.), etc. Select the appropriate radio-button and click Next and Finish.
14. In the setup wizard, finish the installation by highlighting the installed printer in the Select a Printer list and click Next -> Finish.



15. From Windows system, go to start -> Printers and Faxes and highlight your newly installed printer.



16. Right-click, select Properties -> Ports and verify that the print server's port appears.



17. Go to General; click Print Test Page to verify the configuration.

18. Done.

Note: If you wish to install more print servers, start setup wizard from your Windows Start menu: start -> All Programs -> Network Print Server -> PSWizard and repeat the installation procedure.

Hereby ASSMANN Electronic GmbH declares that this device is in compliance with the requirements of Directive 2014/30/EU (EMC), Directive 2014/35/EU (LVD) and the Directive 2011/65/EU for RoHS compliance. The complete declaration of conformity can be requested by post under the below-mentioned manufacturer address.

Warning: This device is a class B product. This equipment may cause some radio interference in the living environment. In this case, the user can be requested to undertake appropriate measures to prevent interference.

Documents / Resources

 <p>PARALLEL PRINTER FAST ETHERNET PRINT SERVER</p> <p>Quick Installation Guide DN-13001-1 Rev. 2</p>	<p>DIGITUS DN-13001-1 Parallel Printer Fast Ethernet Print Server [pdf] Installation Guide DN-13001-1, Parallel Printer Fast Ethernet Print Server, DN-13001-1 Parallel Printer Fast Ethernet Print Server</p>
--	--

References

-  [ASSMANN Electronic GmbH | Germany](#)