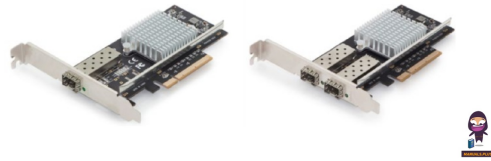


DIGITUS DN-10161 PCIe 10G SFP Plus Network Controller Card



# DIGITUS DN-10161 PCIe 10G SFP Plus Network Controller Card User Manual

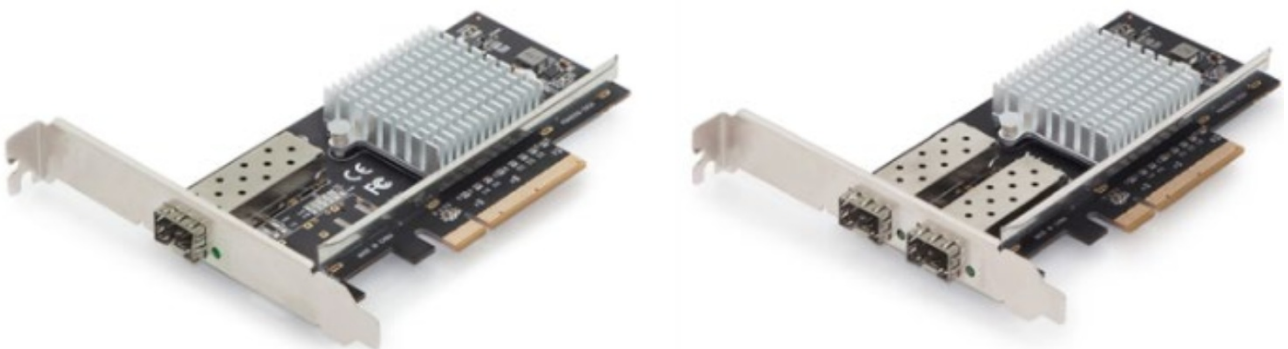
[Home](#) » [DIGITUS](#) » DIGITUS DN-10161 PCIe 10G SFP Plus Network Controller Card User Manual 

## Contents

- [1 DIGITUS DN-10161 PCIe 10G SFP Plus Network Controller Card](#)
- [2 Product Information](#)
- [3 Product Usage Instructions](#)
- [4 Frequently Asked Questions](#)
- [5 Introduction](#)
- [6 Getting Started](#)
- [7 Troubleshooting Tips](#)
- [8 Documents / Resources](#)
  - [8.1 References](#)



DIGITUS DN-10161 PCIe 10G SFP Plus Network Controller Card



## Product Information

### Specifications

- **Product Name:** PCIe 10G SFP+ Network Controller Card
- **Model Numbers:** DN-10161, DN-10162
- **Network Speed:** 10 Gbps
- **Interface:** PCIe
- **Transceiver Type:** SFP+

### Product Usage Instructions

#### Getting Started

1. Turn off the power to your computer.
2. Unplug the power cord and remove your computer's cover.
3. Remove the slot bracket from an available PCIe slot.
4. To install the card, carefully align the card's bus connector with the selected PCIe slot on the motherboard.  
Push the board down firmly.
5. Replace the slot bracket's holding screw to secure the card.
6. Secure the computer cover and reconnect the power cord.

#### Driver Installation

- **Windows Operating Systems:**

1. You must have administrative rights to the operating system to install the drivers.
2. Insert the CD driver bound with the Intel network driver into your CD-ROM drive (or download the latest drivers from [www.assmann.com](http://www.assmann.com)).
3. If the Found New Hardware Wizard screen is displayed, click Cancel.
4. Start the autorun located in the software package. The autorun may automatically start after you have extracted files.
5. Click Install Drivers and Software. Follow the instructions in the install wizard to finish it.

- **Installation for Linux:**

1. Download and expand the base driver tar file.
2. Compile the driver module.
3. Install the module using the modprobe command.
4. Assign an IP address using the ifconfig command.

#### Verifying the installation:

- **For Windows:**

1. Click on the Device Manager tab in the Windows Control Panel. Start > Control Panel > Device Manager.
2. Under Network adapters, you should see Intel(R) 82599 10Gigabit Network Connection in the

Device Manager.

- **For Linux:**

No specific verification steps are provided in the manual for Linux.

## Frequently Asked Questions

**Q: How do I request the Declaration of Conformity if missing from the shipping content?**

**A:** You can request it by post under the manufacturer's address mentioned in the manual.

All brand names and trademarks are properties of their respective owners.

## Introduction

### Product Introduction

- This PCIe 10G SFP+ Network Card is a cost-effective solution that delivers fast and reliable 10 Gbps network access at longer distances than copper-based networks.
- Using the SFP+ transceiver of your choice, you can connect your PCI Express-based server or workstation directly to your 10G fibre optic network.

### Features

- Supports common 10GbE SFP+ optical and Direct Attached Copper modules.
- EEE (Energy Efficient Ethernet)
- Up to 15K Jumbo Frames
- IP, TCP and UDP checksum offloading (IPv4, IPv6) capabilities
- Designed to meet PCI Express Specification Revision 2.0
- Eight lane (x8) PCI Express compatible with x8 and x16 PCI Express slots
- IEEE 802.1Q Tagged VLAN
- Intel PROSet Utility for Microsoft Device Manager

### Requirements Hardware

- The following system specs are recommended minimum.
- **PCIe slot:** Available 8-Lanes PCI-Express slot gen 2.0 or later
- **Processor:** Quad Core 3.0GHz or higher
- **RAM:** 4GB memory or higher

### Software

- **Operating systems supported** (64 bits only)
- **Windows 7**
- **Windows Server 2008 R2**

- **Windows** Server 2012
- **Windows** 8.1
- **Windows** Server 2012 R2
- **Windows** 10
- **Linux** 2. 6. x or later

## **Package Contents**

- **1 x** PCIe 10G SFP+ Network Card
- **1 x** Driver CD
- **1 x** User Manual
- **1 x** Low Profile Bracket

## **Getting Started**

### **Hardware Installation**

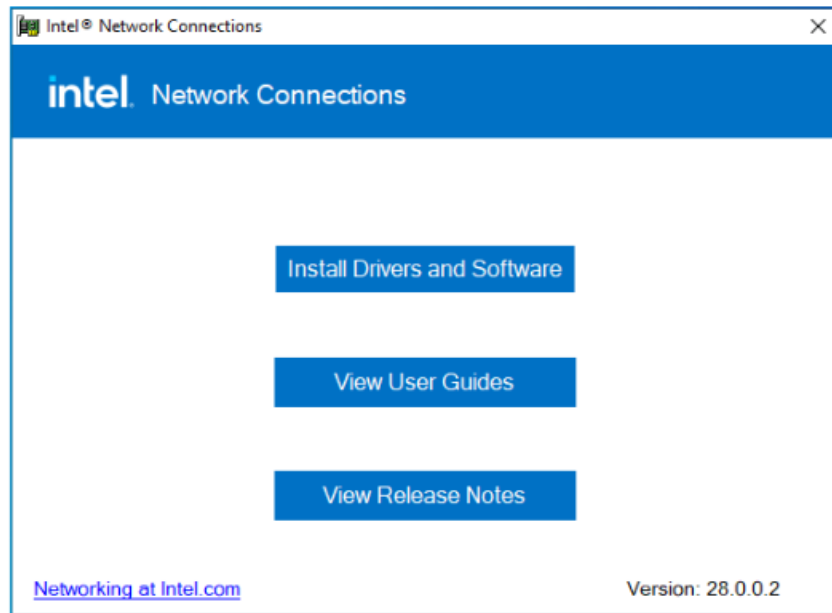
1. Turn off the power to your computer.
2. Unplug the power cord and remove your computer's cover.
3. Remove the slot bracket from an available PCIe slot.
4. To install the card, carefully align the card's bus connector with the selected PCIe slot on the motherboard.  
Push the board down firmly.
5. Replace the slot bracket's holding screw to secure the card.
6. Secure the computer cover and reconnect the power cord.

### **Driver Installation**

### **Windows Operating Systems**

You must have administrative rights to the operating system to install the drivers.

1. insert the CD driver bound with the Intel network driver into your CD-ROM drive (also you can download the latest drivers from [www.assmann.com](http://www.assmann.com))
2. if the Found New Hardware Wizard screen is displayed, click Cancel.
3. start the autorun located in the software package, the autorun may automatically start after you have extracted files.
4. Click Install Drivers and Software
5. Follow the instructions in the install wizard to finish it

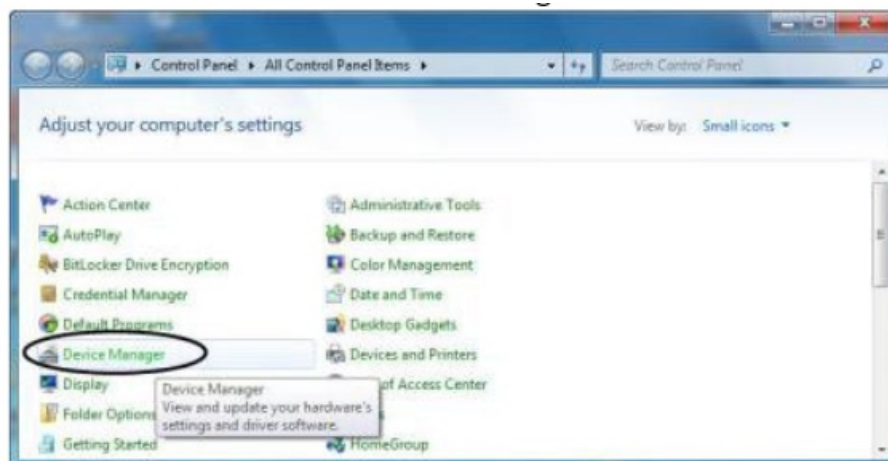


## Installation for Linux Installing Linux Drivers from Source Code




1. Download and expand the base driver tar file.
2. Compile the driver module
3. Install the module using the modprobe command
4. Assign an IP address using the ifconfig command.

## Verifying the installation Verifying for Windows

1. Click on the “Device Manager” tab in the Windows Control Panel. Start > Control Panel > Device Manager



2. Entry the “Network adapters” item, and you can read “Intel(R) 82599 10Gigabit Network Connection” in the Device Manager.

-  **Network adapters**
-  Intel(R) 82599 10 Gigabit Dual Port Network Connection
-  Intel(R) 82599 10 Gigabit Dual Port Network Connection #2

## Verifying for Linux

- You can check whether the driver is loading by using the following commands.
- # lsmod | grep ixgbe
- # ifconfig -a
- If there is a device name, ethX, shown on the monitor, the Linux driver is loaded.
- Then, you can use the following command to activate the ethX.
- # ifconfig ethX up, where X=0,1,2,...

## Troubleshooting Tips

### The computer can NOT detect the PCIe Dual Port Gigabit Server Adapter

1. Make sure that the PCI Express card is correctly plugged into the PCI Express slot; if not, turn off the computer and plug it in again.
2. If the PCI Express card is plugged in correctly, see if the golden connectors on the card are clean; if not, clean the connector surface.
3. If still NOT, please change to another PCI Express slot on your motherboard.
4. Please upgrade your motherboard BIOS to the latest version. If it still does not work, contact your motherboard vendor asking for advanced support for BIOS updates.
5. The board itself might be defective. You can try another motherboard to test whether the PCIe 10G SFP+ Network Card working or not.

### The computer failed to start after inserting the PCIe 10G SFP+ Network Card

1. Turn off the computer, remove the PCIe Dual Port Gigabit Server Adapter, and try to restart the computer.
- If the computer starts successfully, it means that the card has not been inserted into the PCI Express slot correctly.
  - Please clean the golden figure with rubber first, then change to another PCI Express slot.
  - Hereby Assmann Electronic GmbH declares that the Declaration of Conformity is part of the shipping content.
  - If the Declaration of Conformity is missing, you can request it by post under the manufacturer's address.
  - [www.assmann.com](http://www.assmann.com) Assmann Electronic GmbH Auf dem Schüffel 3 58513 Lüdenscheid Germany

## Documents / Resources

 <p>DIGITUS PCIe 10G SFP+ Network Controller Card</p> <p>User Manual DN10161 • DN10162</p>	<p><a href="#">DIGITUS DN-10161 PCIe 10G SFP Plus Network Controller Card</a> [pdf] User Manual DN-10161, DN-10161 PCIe 10G SFP Plus Network Controller Card, PCIe 10G SFP Plus Network Controller Card, SFP Plus Network Controller Card, Network Controller Card, Controller Card, Card</p>
---	---

## References

- [ASSMANN Electronic GmbH | Germany](#)

- [User Manual](#)

[Manuals+](#), [Privacy Policy](#)

This website is an independent publication and is neither affiliated with nor endorsed by any of the trademark owners. The "Bluetooth®" word mark and logos are registered trademarks owned by Bluetooth SIG, Inc. The "Wi-Fi®" word mark and logos are registered trademarks owned by the Wi-Fi Alliance. Any use of these marks on this website does not imply any affiliation with or endorsement.