

digitech XC5240 Waterproof 360 Degree Speaker with Bluetooth Technology



digitech XC5240 Waterproof 360 Degree Speaker with Bluetooth Technology Instruction Manual

[Home](#) » [Digitech](#) » digitech XC5240 Waterproof 360 Degree Speaker with Bluetooth Technology Instruction Manual 

Contents

- [1 digitech XC5240 Waterproof 360 Degree Speaker with Bluetooth Technology](#)
- [2 Specifications](#)
- [3 Product Usage Instructions](#)
- [4 FAQs](#)
- [5 BEFORE FIRST USE](#)
- [6 BOX CONTENTS](#)
- [7 FEATURES](#)
- [8 PRODUCT DIAGRAM](#)
- [9 LED STATUS INDICATORS](#)
- [10 BLUETOOTH PAIRING](#)
 - [10.1 Bluetooth Operation](#)
- [11 3.5MM AUX IN MODE](#)
 - [11.1 Aux In Mode Operation](#)
- [12 TRUE WIRELESS STEREO \(TWS\) PAIRING](#)
- [13 FAQs](#)
- [14 SPECIFICATIONS](#)
- [15 WARRANTY INFORMATION](#)
- [16 Documents / Resources](#)
 - [16.1 References](#)
- [17 Related Posts](#)

digitech

digitech XC5240 Waterproof 360 Degree Speaker with Bluetooth Technology



Specifications

- **Bluetooth Version:** 5.0+EDR
- **Power Output:** 8.6WRMS (2 x 4.3WRMS)
- **Bluetooth Range:** Up to 10m
- **Frequency Response:** 70Hz-18KHz
- **Waterproof Rating:** IPX7
- **Battery Life:** 3-12 Hours
- **Charging Time:** 4-5 Hours
- **Battery Type:** Li-ion 3.7V, 2200mA
- **Charging Input:** 5VDC, 1A (Micro B USB)
- **Max Charging Current:** 700mA
- **Dimensions:** 168(H) x 68(Dia)mm

Product Usage Instructions

Before First Use

Ensure the speaker is fully charged before initial use.

Box Contents

1 x USB Charging Cable included in the box.

Product Diagram

Refer to the product diagram for the location of various buttons and ports on the speaker.

Bluetooth Pairing

To pair with a Bluetooth device, turn on the speaker and activate Bluetooth on your device. Press and hold the

On/Off button until the LED indicator stays on. The speaker will now be discoverable on your device for pairing.

3.5mm Aux In Mode

Use the provided 3.5mm Aux cable to connect your device to the speaker. Turn on the speaker and switch to Aux In mode. The green LED will indicate successful connection, and you can start playing music.

True Wireless Stereo (TWS) Pairing

To enable TWS function, press and hold the + and – buttons simultaneously for up to 2 seconds. Follow the instructions to pair two speakers for true left and right channel audio.

FAQs

- **What USB charger should I use for the speaker?**

You can use any 5VDC, 1A USB mains power adaptor or a standard USB 500mA computer port to charge the speaker.

- **Why will the speaker not turn on?**

If the speaker does not turn on, try leaving it plugged into a charger for a few minutes as the battery may be flat.

BEFORE FIRST USE

- Prior to using your product, please read all the safety and operating instructions thoroughly. Please ensure you follow the steps below before using the product. We recommend you keep the original packaging for storing the product when not in use.
- Find a safe and convenient place to keep this instruction manual for future reference.
- Unpack the product but keep all packaging materials until you have made sure your new product is undamaged and in good working order. Ensure you have all accessories listed in this manual.

BOX CONTENTS

- 1 x Waterproof 360° Speaker
- 1 x 3.5mm To 3.5mm Auxiliary Cable
- 1 x USB Charging Cable

FEATURES

- 360° Stereo Surround Sound
- True Wireless Stereo (TWS)
- NFC Connectivity
- Waterproof
- Rechargeable Battery
- 3.5mm Auxiliary Jack
- Hands-free Calls

PRODUCT DIAGRAM

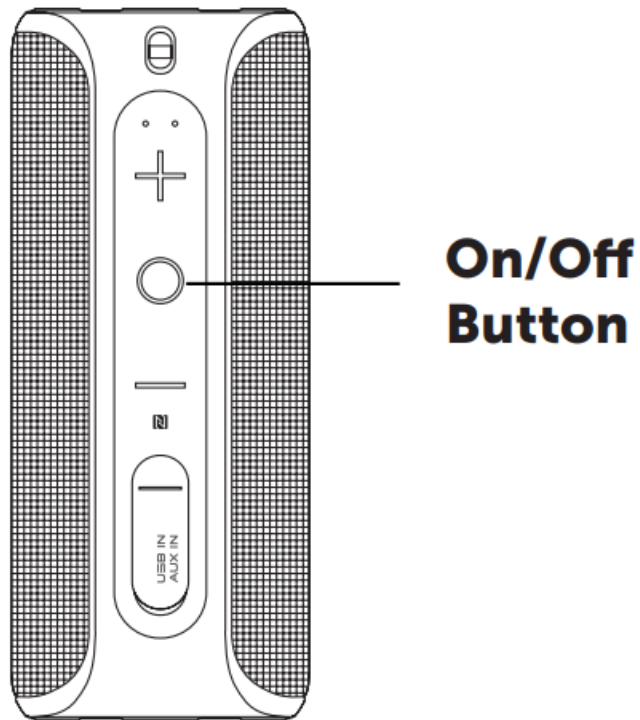


LED STATUS INDICATORS

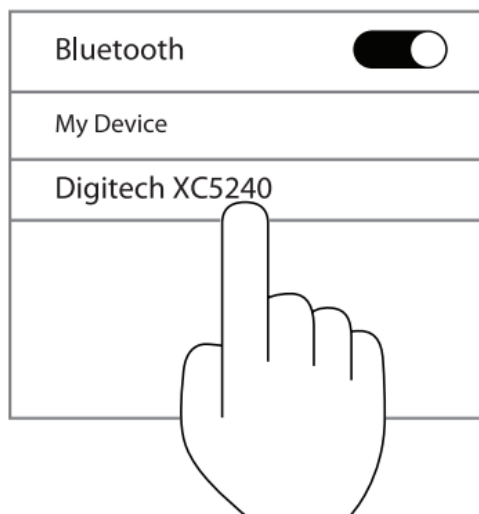
Green On	Aux In Mode
Blue Flashing	Pairing Mode, Out of Bluetooth Range
Blue On	Bluetooth Connected
Red On	Charging
Red Off	Fully Charged

BLUETOOTH PAIRING

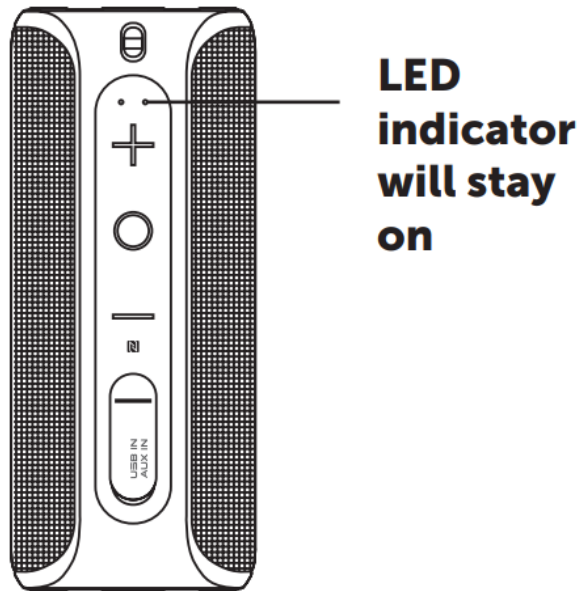
1. Press and hold the On/Off O button for 3 seconds to turn the unit on. The speaker will enter Bluetooth® pairing mode and the LED indicator will be flashing blue.



2. Open your smartphone settings and ensure Bluetooth® is enabled. Scan for devices and “Digitech XC5240” will appear



3. Press the “Digitech XC5240” on the Bluetooth® device list and your smartphone will make a prompt sound indicating that the connection is successful. You can now start playing music.



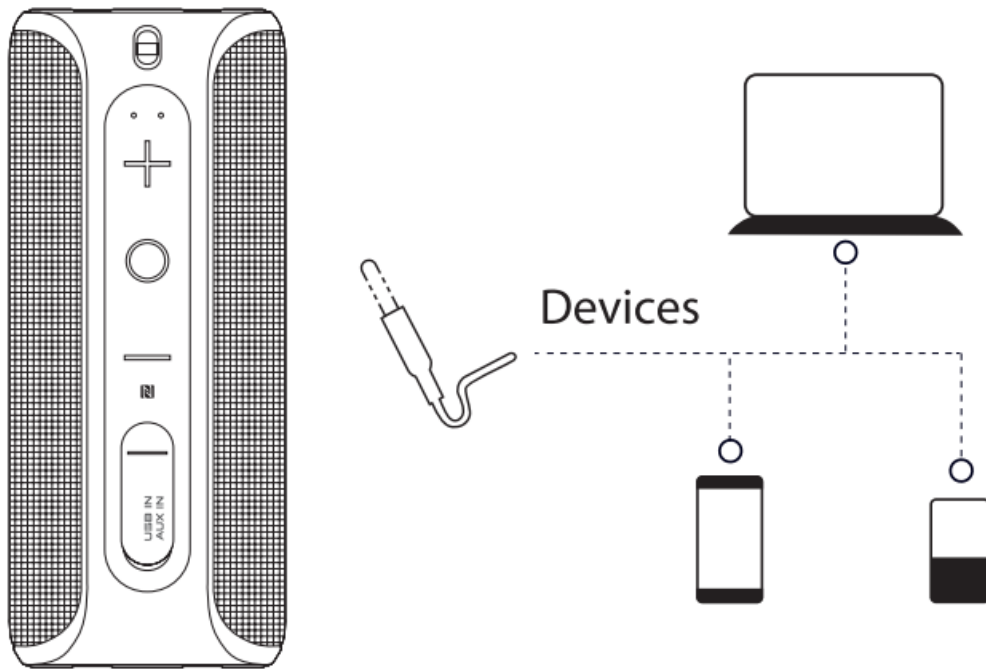
Bluetooth Operation

- **On/Off Button**
 - **Play/Pause:** Press the On/Off button while playing music to either pause or play back the current track
 - **Accept Incoming Calls:** Press the On/Off button to answer the call
 - **Refuse Incoming Calls:** Press the On/Off button to reject the incoming call
 - **Hang Up:** Press the On/Off button to hang up the current call
- **Volume Up/Next Track**
 - **Volume Up:** Press the Volume Up button to turn the music up
 - **Next Track:** Press and hold the Volume Up button to skip to the next track
- **Volume Down/Previous Track**
 - **Volume Down:** Press the Volume Down button to turn the music down
 - **Previous Track:** Press and hold the Volume Down button to go back to the previous track

3.5MM AUX IN MODE

This speaker includes a 3.5mm Aux audio input to connect with your smartphone, MP3 player, PC or laptop with the included 3.5mm cable. Simply plug in the auxiliary cable from your device to the speaker and turn the unit on. Once the speaker is on, the green LED will appear and you can start playing music.

NOTE: In Aux In Mode; the stereo sound will be mono output.



Aux In Mode Operation

- **Volume Up**

Press once to turn the volume up

- **Volume Down**

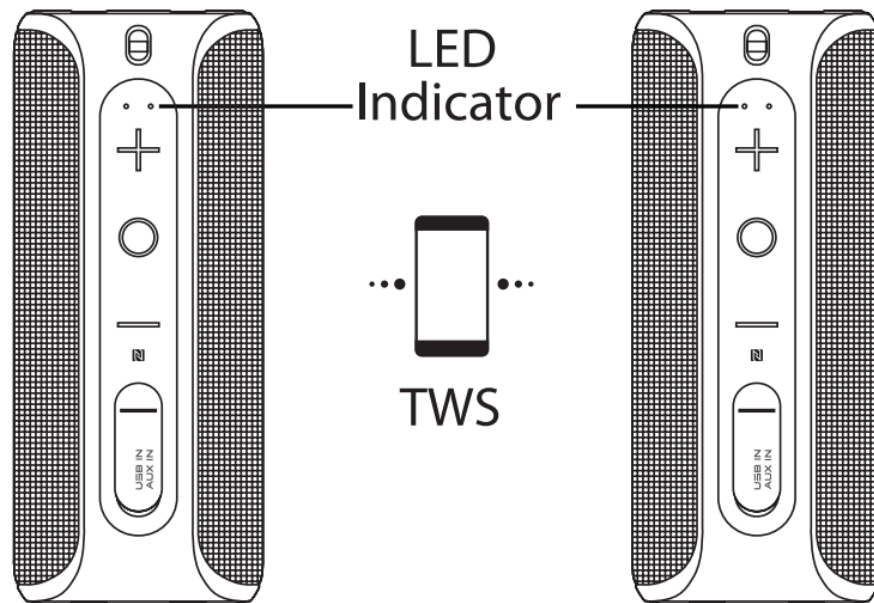
Press once to turn the volume down

TRUE WIRELESS STEREO (TWS) PAIRING

Press and hold the “+” and “-” buttons at the same time for up to 2 seconds to turn on and off the TWS function. True Wireless Stereo (TWS) requires two speakers in order to function. It turns two speakers in to true left and right channel audio.

1. Press the On/Off button on both speakers to turn them on.
2. Use the first speaker; press and hold the “+” and “-” buttons for up to 2 seconds at the same time. You will hear a prompt sound indicating the speaker is in TWS pairing mode.
3. Use the second speaker, press and hold the “+” and “-” buttons for up to 2 seconds at the same time. You will hear a prompt sound indicating that both speakers have paired with TWS correctly. The second speaker's LED indicator will stay on while the first speaker will still be flashing for pairing.
4. 2 seconds at the same time. You will hear a prompt sound indicating that both speakers have paired with TWS correctly. The second speaker's LED indicator will stay on while the first speaker will still be flashing for pairing.
5. Open your smartphone Bluetooth® settings and click on the “Digitech XC5240” button to pair both speakers together and now should be working successfully.
6. To disconnected the Bluetooth® from the speaker; press and hold the “+” and “-” buttons together for up to 2 seconds.

NOTE: Please connect both speakers together first before using the smartphone to connect with the master speaker.



FAQS

- **What USB charger should i use for the speaker?**

Any 5VDC, 1A USB mains power adaptor can be used or a standard USB 500mA computer port.

- **Why is there background noise when playing music?**

The speaker has a Bluetooth® Range of up to 10m, reduce the distance to improve the sound coming from the speaker.

- **Why does the speaker shut down when it is working?**

A: When there is no Bluetooth® device paired or Aux In cable connected to the speaker then it will automatically shut down after 10 minutes to save battery.

- **Why won't the speaker connect to a phone that has been previously paired?**

Remove the speaker's pairing name "Digitech XC5240" from the Bluetooth® device list of your smartphone. Then press the Bluetooth® disconnection button to restart the pairing mode.

- **What is the working mode of the speaker?**

The priority mode is Aux In; Phone calls in Bluetooth® mode and then playing music while in Bluetooth® mode.

- **Why will the speaker not turn on?**

Please leave the speaker plugged in to a charger and try to turn after a few minutes. The battery may be flat.

SPECIFICATIONS

Bluetooth® Version	5.0+EDR
Output Power	8.6WRMS (2 x 4.3WRMS)
Transmission Range	Up to 10m
Frequency Response	70Hz-18KHz
IP Rating	IPX7
Playback Time	3-12 Hours
Charging Time	4-5 Hours
Battery	Li-ion 3.7V, 2200mA
Power	5VDC, 1A (Micro B USB)
Power Consumption	700mA (Max)
Dimensions	168(H) x 68(Dia)mm

WARRANTY INFORMATION

- Our product is guaranteed to be free from manufacturing defects for a period of 12 Months.
- If your product becomes defective during this period, Electus Distribution will repair, replace, or refund where a product is faulty; or not fit for intended purpose.
- This warranty will not cover modified product; misuse or abuse of the product contrary to user instructions or packaging label; change of mind and normal wear and tear.
- Our goods come with guarantees that cannot be excluded under the Australian Consumer Law. You are entitled to a replacement or refund for a major failure and for compensation for any other reasonably foreseeable loss or damage. You are also entitled to have the goods repaired or replaced if the goods fail to be of acceptable quality and failure does not amount to a major failure.
- To claim warranty, please contact the place of purchase. You will need to show receipt or other proof of purchase. Additional information may be required to process your claim.
- Any expenses relating to the return of your product to the store will normally have to be paid by you.
- The benefits to the customer given by this warranty are in addition to other rights and remedies of the Australian Consumer Law in relation to the goods or services to which this warranty relates.

Documents / Resources

	<p>digitech XC5240 Waterproof 360 Degree Speaker with Bluetooth Technology [pdf] Instruction Manual</p> <p>XC5240 Waterproof 360 Degree Speaker with Bluetooth Technology, XC5240, Waterproof 360 Degree Speaker with Bluetooth Technology, 360 Degree Speaker with Bluetooth Technology, S peaker with Bluetooth Technology, Bluetooth Technology, Technology</p>
---	--

References

- [User Manual](#)

Manuals+. Privacy Policy

This website is an independent publication and is neither affiliated with nor endorsed by any of the trademark owners. The "Bluetooth®" word mark and logos are registered trademarks owned by Bluetooth SIG, Inc. The "Wi-Fi®" word mark and logos are registered trademarks owned by the Wi-Fi Alliance. Any use of these marks on this website does not imply any affiliation with or endorsement.