

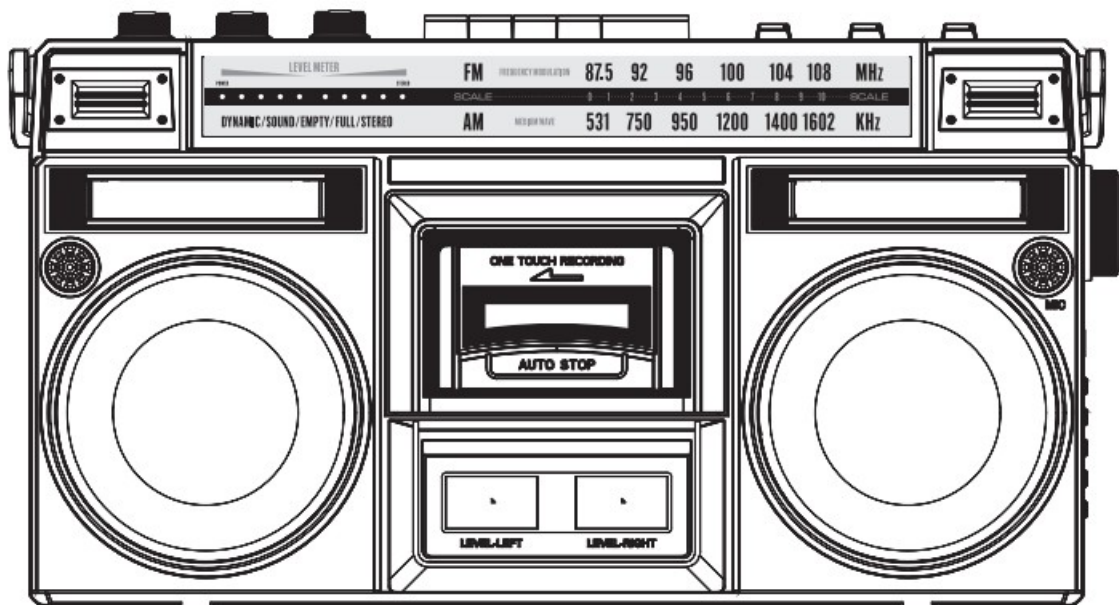


## digitech CS2473 Ghetto Blaster with Bluetooth Cassette Player and Radio User Manual

[Home](#) » [Digitech](#) » digitech CS2473 Ghetto Blaster with Bluetooth Cassette Player and Radio User Manual

# digitech

CS2473 Ghetto Blaster with Bluetooth Cassette Player and Radio  
User Manual



## Contents [ [hide](#)

- [1 Introduction](#)
- [2 Featured](#)
- [3 Operation](#)
- [4 Recording to USB/SD](#)
- [5 Playback](#)
- [6 Troubleshooting](#)
- [7 Appendix](#)
- [8 Trademarks & Licenses](#)
- [9 Documents / Resources](#)
  - [9.1 References](#)
- [10 Related Posts](#)

## Introduction

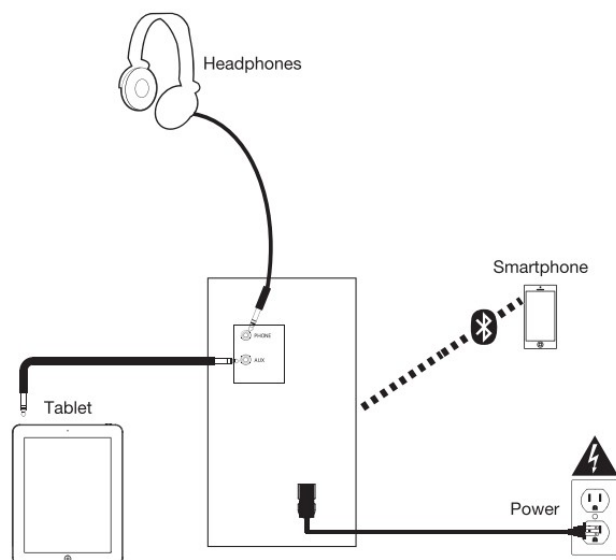
Thank you for purchasing the CS-2473. At digitech, your entertainment is as important to us as it is to you. That's why we design our products with one thing in mind- to make your life more fun and more convenient.

### Box Contents

- Ghetto Blaster
- Power Cable
- Quickstart Guide
- Safety & Warranty Manual

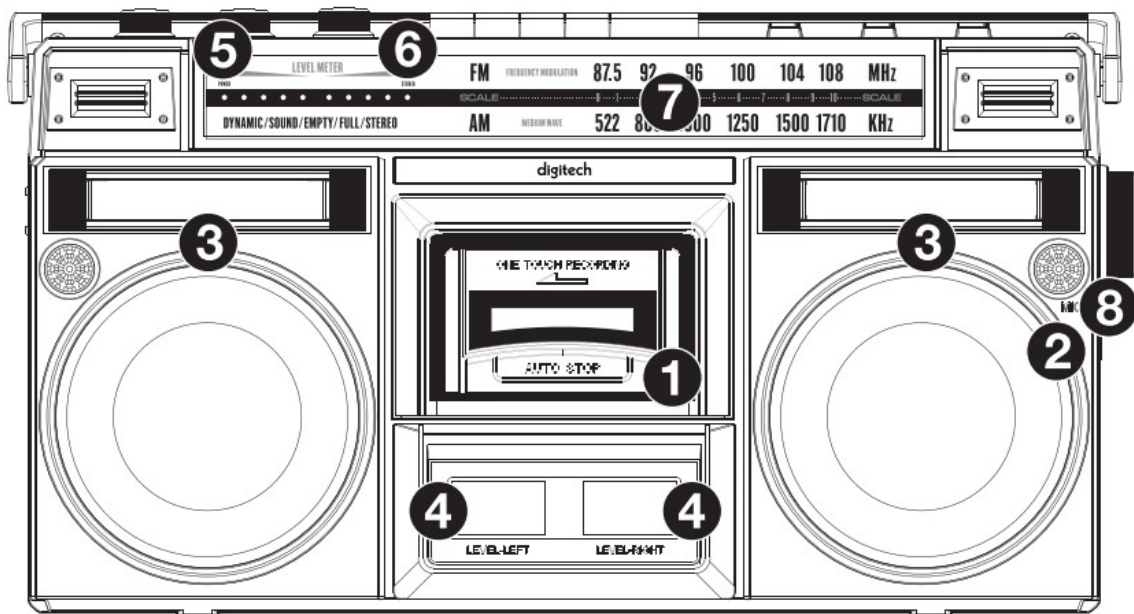
### Step

Items not listed under Introduction > Box Contents are sold separately.



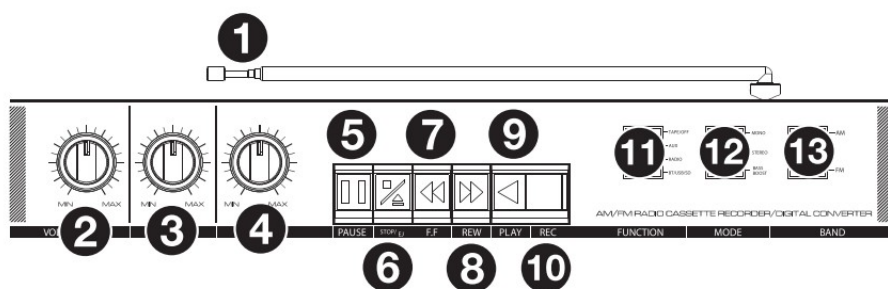
## Featured

### Front Panel



1. Cassette Holder: Press the Stop/Eject button to open the cassette deck and insert a tape here.
  2. Internal Mic: Use this microphone to record external audio sources such as speech, live music, nature sounds, beatboxing, etc. to USB, SD, and cassette.
  3. Speakers: Listen to your audio source here.
- Note:** When headphones are connected to the Headphone Output, the internal speakers will be muted.
4. Level Display: View the audio playback level for the left and right channels.
  5. Power LED: The LED will illuminate red when the unit is powered on.
  6. Stereo LED: The LED will illuminate green when a stereo FM station is selected.
  7. Radio Channel Display: View the selected radio station here.
  8. Tuning Dial: Adjust this dial to tune in to a radio station.

## Top Panel



1. Antenna: Adjust the antenna to get the best radio station reception.
2. Volume: Adjust this to control the overall playback volume.
3. Bass: Adjust this to control the low frequencies for the audio playback.
4. Treble: Adjust this to control the high frequencies for the audio playback.
5. Pause: In Tape mode, press this button to pause the tape playback.
6. Stop/Eject: In Tape mode, press this button to stop or eject a tape.
7. Fast Forward: In Tape mode, press this button to fast forward the tape.

**Note:** The cassette mechanism will not auto-stop when fast forwarding. Press the Stop button after fast forwarding is completed.

8. Rewind: In Tape mode, press this button to rewind the tape.

Note: The cassette mechanism will not auto-stop when rewinding. Press the Stop button after rewinding is completed.

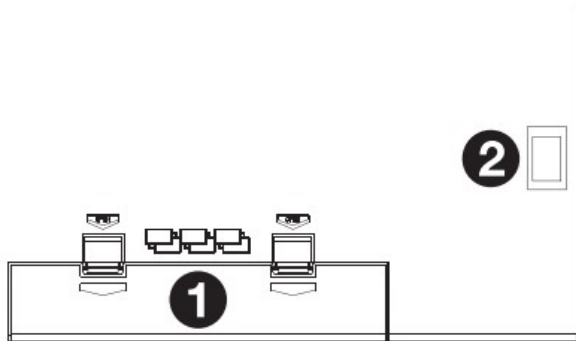
9. Play: In Tape mode, press this button to play the tape.

**Note:** There will be a delay in playback for a few seconds after the Play button is pressed.

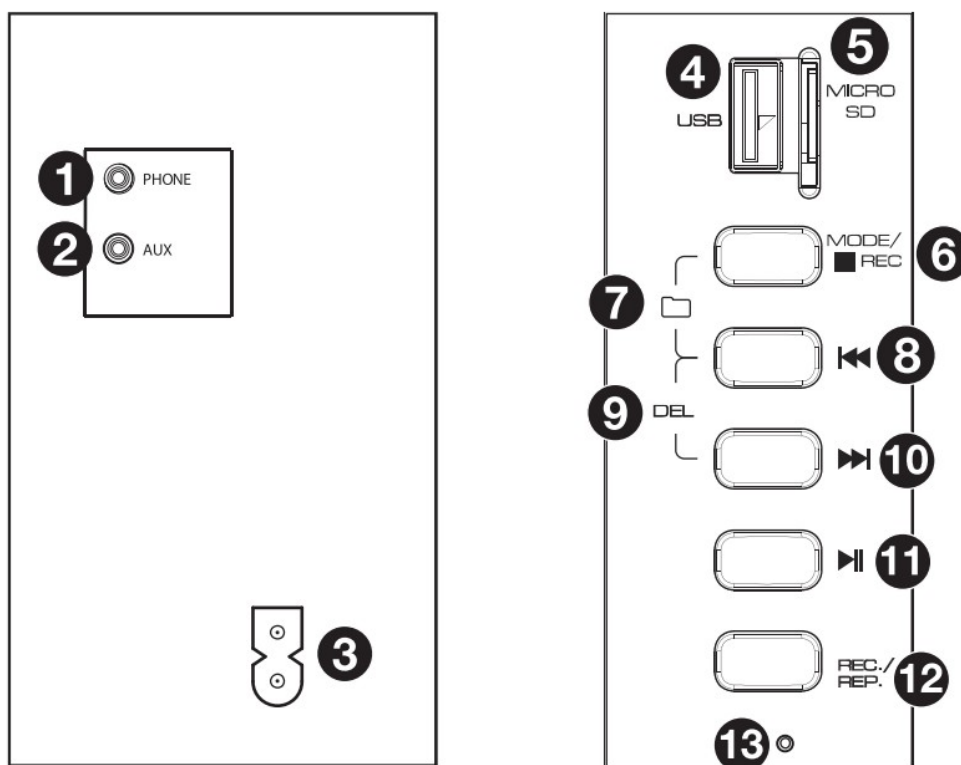
10. Record: In Tape mode, press the Record button to record to a tape.
11. Function: Adjust this switch to select your sound source as Tape/Off, Aux, Radio, or BT (Bluetooth)/USB/SD.
12. Mode: Adjust this switch to change the mode from Mono, Stereo, or Bass Boost.
13. Band: Adjust this switch to select AM or FM radio.

## Rear Panel

1. Battery Compartment: Insert 6 new “D” size alkaline batteries (not included) to power the unit when not using AC power.
2. Power Switch: Adjust this switch to power Street Rocker on or off.



## Side Panels



1. Headphone Output: Connect your headphones to this 1/8" (3.56 mm) output. When using headphones, the

internal speakers will be muted.

Note: When headphones are connected to the Headphone Output, the internal speakers will be muted.

2. Aux Input: Connect your smartphone, MP3 player, or similar device here using an 1/8" (3.5 mm) cable (not included).
3. 2-Prong IEC Power Input: Connect the included power cable here.
4. USB Port: Connect your USB flash drive here to play music or record the audio from Bluetooth, tape, radio, internal mic, or the aux input.
5. Micro SD Card Slot: Insert your micro SD card here to play music or record audio from Bluetooth, tape, radio, internal mic, or the aux input.
6. Mode/Stop Rec: Press and release this button to switch between Bluetooth, USB, or micro SD card source playing modes. When recording, press and release this button to stop recording.
7. Switch Folders: Press the Mode/Stop Rec and Previous Track buttons simultaneously to switch between the recorded tracks folder and other music folders on a USB flash drive or micro SD card.
8. Previous Track: Press this button to go to the beginning of the current playing track. During playback, double press this button to go to the previous track. Press and hold this button to rewind the track during playback.
9. Delete Track: Press and hold both the Previous Track and Next Track buttons to delete the currently playing track.
10. Next Track: Press this button to go to the next track. Press and hold this button to fast forward the track during playback.
11. Play/Pause: Press this button to play/pause a USB or micro SD card track. Press and hold this button to disconnect from a paired Bluetooth device.
12. Rec./Rep.: Press and hold the Rec./Rep. button to record the audio source (Bluetooth, radio, tape, or mic) to the USB flash drive or micro SD card. Press Mode/Stop Rec to stop the recording and the recorded content will be transferred to the USB flash drive or micro SD card. When playing tracks from the USB flash drive or micro SD card, press and release this button to switch between sequential playback, repeat a single track, and repeat all tracks.
13. Media Status: The LED will slowly flash blue when the USB flash drive, micro SD card, or Bluetooth source is playing back. When in Bluetooth pairing mode, the LED will quickly flash blue. When a Bluetooth device is paired, the LED will be lit solid blue. When recording to the USB flash drive or micro SD card, the LED will slowly flash red. When playing back tracks that were recorded to the USB flash drive or micro SD card, the LED will flash purple. When recorded audio is paused, the LED will be lit solid purple.

## Operation

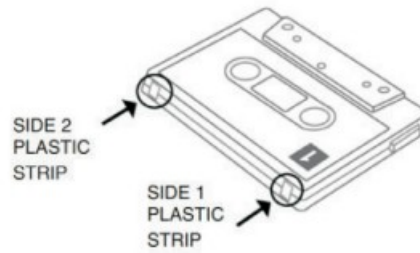
### Recording to Tape

**Note:** Most cassettes feature a protective plastic strip which, when removed, will not allow any recording to be made to the cassette. When the plastic strip has been removed, the Ghetto Blaster's Record button will not function when attempting to record to the cassette. To record to a cassette which no longer has a plastic strip, use adhesive tape to cover the strip opening.

#### **Recording from the Internal Microphone to Tape:**

1. Press Stop/Eject to open the cassette holder.
2. Insert a blank tape and close the cassette holder.
3. Set the Function switch to Tape.
4. Press the Record button to start recording.

5. To stop recording, press Stop/Eject button.



#### **Recording from the Aux Input to Tape:**

1. Connect your smartphone, MP3 player, or similar device to the Aux Input using an 1/8" (3.5 mm) cable (not included).
2. Set the Function switch to Aux.
3. Connect your external audio device and start its playback. Adjust the output volume on your source device.
4. Play your source and check the levels on the Level Display.
5. To begin recording, press the Record button and the Play button simultaneously.
6. To stop recording, press Stop/Eject button.

#### **Recording from the Radio to Tape:**

1. Press Stop/Eject to open the cassette holder.
2. Insert a blank tape and close the cassette holder.
3. Set the Function switch to Radio.
4. Set the Band switch to the desired frequency band (AM or FM).
5. Adjust the Tune dial to select a radio station.
6. Extend and adjust the antenna for best reception.
7. Press the Record button to start recording.
8. To stop recording, press Stop/Eject button.

#### **Recording Bluetooth to Tape:**

1. Press Stop/Eject to open the cassette holder.
2. Insert a blank tape and close the cassette holder.
3. Set the Function switch to Bluetooth/USB/SD.
4. Pair your Bluetooth device to the unit and begin playing music. See the section Pairing a Bluetooth Device for setup details.
5. Press the Record button to start recording.
6. To stop recording, press the Stop/Eject button.

#### **Recording from a USB Flash Drive or Micro SD Card to Tape:**

1. Press Stop/Eject to open the cassette holder.
2. Insert a blank tape and close the cassette holder.
3. Insert a USB Flash Drive or micro SD card into the unit.

4. Set the Function switch to Bluetooth/USB/SD.
5. Press the side panel Play button to begin playback.
6. Press the Record button to start recording.
7. To stop recording, press the Stop/Eject button.

## **Recording to USB/SD**

### **Recording from the Internal Microphone to a USB Flash Drive or Micro SD Card:**

1. Insert a USB flash drive or micro SD card into the unit.
2. Set the Function switch to BT/USB/SD and press and release the Mode button to select USB playback or SD mode. If there are tracks on the USB flash drive, playback will begin.
3. To begin recording, press and hold the side panel Rec./Rep. button and speak into the internal microphone. Before recording begins, USB playback will stop.
4. To stop recording, press Mode/Stop Rec button.

### **Recording from Tape to a USB Flash Drive or Micro SD Card:**

1. Press the Stop/Eject button to open the cassette holder.
2. Insert a tape and close the cassette holder.
3. Insert the USB flash drive into the USB port or insert a micro SD card into the micro SD card slot.  
**Note:** Only use either a USB flash drive or a micro SD card at a time, but not both when recording. The unit may not record properly if both a USB and micro SD card are plugged in at the same time.
4. Set the Function switch to Tape.
5. Press Play to playback the tape.
6. To start recording, press and hold the side panel Rec./Rep. button.
7. To stop recording, press the side panel Mode/Stop Rec button.

### **Recording from the Aux Input to a USB Flash Drive or Micro SD Card:**

1. Connect your smartphone, MP3 player, or similar device to the Aux Input using an 1/8" (3.5 mm) cable (not included).
2. Insert the USB flash drive into the USB port or insert a micro SD card into the micro SD card slot.  
**Note:** Only use either a USB flash drive or a micro SD card at a time, but not both when recording. The unit may not record properly if both a USB and micro SD card are plugged in at the same time.
3. Set the Function switch to Aux.
4. Connect your external audio device and start its playback.
5. Adjust the output volume on your source device and check the levels on the Level Display.
6. To start recording, press and hold the side panel Rec./Rep. button.
7. To stop recording, press Mode/Stop Rec button.

### **Recording from the Radio to a USB Flash Drive or Micro SD Card:**

Insert the USB flash drive into the USB port or insert a micro SD card into the micro SD card slot.

**Note:** Only use either a USB flash drive or a micro SD card at a time, but not both when recording. The unit may not record properly if both a USB and micro SD card are plugged in at the same time.

1. Set the Function switch to Radio.
2. Set the Band switch to the desired frequency band (AM or FM).
3. Adjust the Tune dial to select a radio station.
4. Extend and adjust the antenna for best reception.
5. To start recording, press and hold the side panel Rec./Rep. button.
6. To stop recording, press Mode/Stop Rec button.

### **Recording Bluetooth to a USB Flash Drive or Micro SD Card:**

1. Insert the USB flash drive into the USB port or insert a micro SD card into the micro SD card slot.  
**Note:** Only use either a USB flash drive or a micro SD card at a time, but not both when recording. The unit may not record properly if both a USB and micro SD card are plugged in at the same time.
2. Set the Function switch to BT/USB/SD, and press the side panel Mode/Stop Rec button to select Bluetooth Mode.
3. Pair your Bluetooth device to the unit. See Pairing a Bluetooth Device for pairing details.
4. To start recording, press and hold the side panel Rec./Rep. button. The LED will slowly flash red to indicate recording.
5. Playback your Bluetooth source.
6. To stop recording, press the side panel Mode/Stop Rec button. Press Mode/Stop Rec again to playback the previously recorded track.

## **Playback**

### **Playing a Tape:**

1. Press the Stop/Eject button to open the cassette holder.
2. Insert a tape and close the cassette holder.
3. Press the Play button to play the tape.

**IMPORTANT!** After extensive usage, tape heads can acquire oxide build-up, especially if the cassettes are old. To ensure best performance, use a tape head cleaner periodically.

### **Aux In Playback:**

1. Connect your smartphone, MP3 player, or similar device to the Aux Input using an 1/8" (3.5 mm) cable (not included).
2. Set the Function switch to Aux.
3. Start playback on your external audio device.
4. Adjust the Volume dial to the desired level.

**Note:** If the line output of your external device is connected, you only need to adjust the system's volume control. If your external device's headphone output is connected, you may need to adjust the volume control on both your external device and Street Rocker to achieve the desired volume.

### **USB Flash Drive Playback:**

**Note:** When the function switch is set to BT/USB/SD, it will default to BT mode always. In order to go to USB mode, insert the USB flash drive and press the Mode button to switch.

**Note:** In USB mode, files are played in order by time.



1. Connect the USB flash drive to the USB port.
2. Set the Function switch to BT/USB/SD and press the Mode button to switch to USB mode.
3. Press the Play button to begin playback.
4. Press the side panel Stop button to stop playback.

### **Micro SD Card Playback:**

**Note:** When the function switch is set to BT/USB/SD, it will default to BT mode always. In order to go to SD mode, insert the micro SD card and press the Mode button to switch.

**Note:** In SD mode, files are played in order by time.

1. Insert the micro SD card into the micro SD card slot.
2. Set the Function switch to BT/USB/SD and press the Mode button to switch to SD mode.
3. Press the Play button to begin playback.
4. Press the side panel Stop button to stop playback.

### **Listening to the Radio:**

1. Set the Function to Radio.
2. Select the desired frequency band (AM or FM).
3. Select the desired radio station by turning the Tuning dial.
4. Extend and adjust the antenna for best reception.
5. Adjust the volume to the desired level.

### **Radio Reception:**

For best radio reception and to avoid interference, follow these tips:

- Move CS-2473 away from sources that can cause radio frequency interference, such as laptop power supplies, flat screen TVs, electric blankets, external hard drives, light dimmers, walls, and windows.
- Try listening to the radio at a park or other open outdoor space, away from tall buildings.
- Power CS-2473 with quality, new alkaline batteries instead of a power cable.

### **Cassette Care**

To avoid tape jamming, tape tangling, or playback issues, please follow these tips:

- Check that there are no loose layers of tape visible through the cassette center window. If there are, manually wind up loose tape using a pencil or hexagonal barreled ballpoint pen.  
**Note:** If the cassette feels tight when manually winding, the tape may be jamming from ridges formed in the winding of the tape (visible through the center window). These may be removed, in most cases, by fast forwarding the cassette to the end, and then rewinding it to the beginning.
- When recording, use new high-quality, brand name tapes.
- Do not expose cassettes to direct sunlight, fluorescent lights, dust, or oils.
- Do not touch the surface of the tape.
- Before storing tapes, rewind or fast forward them to the end of a side.
- Store tapes in a dry, temperate environment.

## Tape Head Cleaning

For continued high performance from CS-2473, periodically clean the head, pinch roller, and capstan every 10-20 hours of operation.

### To clean the tape deck:

1. Power off CS-2473
2. Press the Stop/Eject button to open the cassette holder.
3. Remove any tape in the deck.
4. Moisten a new cotton swab with isopropyl alcohol (70-80%).
5. Carefully rub the face of each head, pinch roller, and capstan with the moistened cotton swab.
6. Let the cassette holder dry for 5-10 minutes before putting a tape back in it.

## Pairing a Bluetooth Device

1. Adjust the Function switch on Street Rocker to the BT/USB/SD position.
2. Turn on your Bluetooth device.
3. Navigate to your Bluetooth device's setup screen, find CS-2473 and connect, A voice prompt will be heard saying "Bluetooth pairing" when pairing and "Bluetooth connected" when connected to your Bluetooth device.  
**Note:** If your Bluetooth device prompts for a pairing code, enter "0000".
4. Press and hold the Play/Pause button to disconnect from a paired Bluetooth device. A voice prompt will be heard saying "Bluetooth disconnected" when disconnected from the Bluetooth device.

## Troubleshooting

If the sound is distorted: Try lowering the volume control of your sound source. Also, try to reduce the overall volume of CS-2473 using the Volume knob.

If there is too much bass: Try adjusting the tone or EQ control on your sound source to lower the bass level. This will allow you to play the music louder before clipping (distortion) occurs.

If there is poor AM reception: When you have a Bluetooth device that is connected, disconnect your Bluetooth device in order to listen to AM radio. To adjust AM reception, move the entire unit.

If you cannot connect your audio device to Street Rocker via Bluetooth:

- Have your audio device (e.g., smartphone or tablet) and CS-2473 as close together as possible while trying to connect. Make sure both the audio device and CS-2473 are unobstructed by walls, furniture, etc.
- Reset the Bluetooth connection on CS-2473 to disconnect CS-2473 from any other audio device and restart the search process. If this does not work right away, power off CS-2473 and then power it back on. See Pairing a Bluetooth Device for more information.
- Reset the Bluetooth connection on your audio device by turning Bluetooth off and back on. You can find this under the Bluetooth menu in the Settings for your phone or other audio device.
- If this does not work, and you have connected to CS-2473 before, find CS-2473 in the list of available or previously connected devices in your audio device's Bluetooth menu, tap the "gear" or "i" icon located next to it and then select Unpair or Forget. Turn CS-2473 off and back on and try pairing again once it reappears in your available devices list.

**Note:** If CS-2473 has been paired to another audio device recently that is still within range, you may need to repeat this process with that audio device to fully disconnect.

## Appendix

### Technical Specifications

Output Power	28 W (peak)
Frequency Response	80 Hz-10 KHz
Drivers	5.0" / 127 mm full-range speakers
Bluetooth Specifications	Profile: A2DP, AVRCP Range: Up to 100 feet / 30.5 meters
Supported Cassette Types	Type 1 (normal bias) Type 2 (Chrome – high bias) Type 3 (FeCr) Type 4 (Metal)
Radio Frequency Range	531-1602 KHz (AM), 87.5-108 MHz (FM)
USB/Micro SD Card File Types	.MP3, WAV
USB/Micro SD Card File System	FAT32
USB/Micro SD Card Maximum File Size	32 GB
Power	6 "D" alkaline batteries or power cable Connection: mini-IEC Input Voltage: 230-240V AC. 50-60 Hz Consumption: 30W (AC Power)
Dimensions (width, x depth x height)	432 x 233 x 139 mm
Weight	7.05 lb. 3.2 kg


Specifications are subject to change without notice. Bluetooth and wireless reception and range are affected by walls, obstructions, and movement. For optimal performance, place the product in the center of the room so it is unobstructed by walls, furniture, etc. Battery life may vary based on temperature, age, and volume usage of product.

### Trademarks & Licenses

Digitech Audio is a trademark of inMusic Brands ,Inc., registered in the Australia and other countries. The Bluetooth word mark and logos are owned by the Bluetooth SIG, Inc. and any use of such marks by digitech Audio is under license. All other product names, company names, trademarks, or trade names are those of their respective owners.

**Distributed by:**  
Electus Distribution Pty Ltd  
46 Eastern Creek Dr,  
Eastern Creek NSW 2766 Australia  
Ph 1300 738 555  
Int'l +61 2 8832 3200  
Fax 1300 738 500  
[www.electusdistribution.com.au](http://www.electusdistribution.com.au)

### Documents / Resources

<div><div>digitech</div><div></div></div>	<div><a href="#">digitech CS2473 Ghetto Blaster with Bluetooth Cassette Player and Radio</a> [pdf] User Manual</div> <div>CS2473 Ghetto Blaster with Bluetooth Cassette Player and Radio, CS2473, Ghetto Blaster with Bluetooth Cassette Player and Radio, Bluetooth Cassette Player and Radio, Cassette Player and Radio</div>
--	---

References

- [E Electus Distribution - Home](#)