



Contents [[hide](#)]

- [1 DigiTech BassTec Power Supply](#)
- [2 Specifications](#)
- [3 ELECTROMAGNETIC COMPATIBILITY](#)
- [4 OPERATING THE BASSTEC](#)
- [5 Accessories for the BASSTEC](#)
- [6 Warranty](#)
- [7 MULTI-EFFECTS PROCESSING](#)
- [8 DIGITAL/ANALOG PRESETS](#)
- [9 QUICK START](#)
- [10 FAQs](#)
- [11 Documents / Resources](#)
 - [11.1 References](#)



DigiTech BassTec Power Supply






Specifications

- Fuses (5mm x 20mm):
 - 100 V: T 250 mA 250 V
 - 120 V: 200 mA 250 V SLOW BLOW
 - 220 / 240 V: T 125 mA 250 V

CAUTION

RISK OF ELECTRIC SHOCK DO NOT OPEN

- **ATTENTION:** RISQUE DE CHOC ELECTRIQUE – NE PAS OUVRIR
- **WARNING:** TO REDUCE THE RISK OF FIRE OR ELECTRIC SHOCK DO NOT EXPOSE THIS EQUIPMENT TO RAIN OR MOISTURE
- **CAUTION:** TO REDUCE THE RISK OF FIRE REPLACE ONLY WITH SAME TYPE FUSE
- **ATTENTION:** UTILISER UN FUSIBLE DE RECHANGE DE MEME TYPE

FUSES (5mm x 20mm): 100V  : T 2 5 0 m A 2 5 0 V 120 V  : 2 0 0 m A 2 5 0 V
S L O W B L O W 2 2 0 / 2 4 0 V  : T 1 2 5 m A 2 5 0 V

WARNING

FOR YOUR PROTECTION, PLEASE READ THE FOLLOWING:

WATER AND MOISTURE: Appliance should not be used near water (e.g., near a bathtub, washbowl, kitchen sink, laundry tub, in a wet basement, or near a swimming

pool, etc). Care should be taken so that objects do not fall and liquids are not spilled into the enclosure through openings.

POWER SOURCES: The appliance should be connected to a power supply only of the type described in the operating instructions or as marked on the appliance.

GROUNDING OR POLARIZATION: Precautions should be taken so that the grounding or polarization means of an appliance are not defeated.

POWER CORD PROTECTION: Power supply cords should be routed so that they are not likely to be walked on or pinched by items placed upon or against them, paying particular attention to cords at plugs, convenience receptacles, and the point where they exit from the appliance.

SERVICING: To reduce the risk of fire or electric shock, the user should not attempt to service the appliance beyond that described in the operating instructions. All other servicing should be referred to qualified service personnel. **FOR UNITS EQUIPPED WITH EXTERNALLY ACCESSIBLE FUSE RECEPTACLE:** Replace fuse with the same type and rating only.

ELECTROMAGNETIC COMPATIBILITY

Operation is subject to the following conditions:

- This device may not cause harmful interference, and
- This device must accept any interference received, including interference that may cause undesired operation.
- Use only shielded interconnecting cables. The
- operation of this unit within significant electromagnetic fields should be avoided.

OPERATING THE BASSTEC

PLUG IN, TURN ON, ROCK OUT.

Selecting programs

Use either the footswitches (1) or the bank/edit buttons (7). The first three footswitches

select programs, the last footswitch selects banks. To select a specific bank, continue stepping on the bank footswitch until the desired bank number appears in the display (5). Then step on footswitch 1-3 to activate the program. Only user programs can be selected with the bank footswitch. To select the Factory Presets, you must use the Up/Down buttons. To make life easy, factory presets are duplicated in all the user locations.

Editing programs

30 user slots have been provided for you to fill with programs of your own. Editing programs on the BASSTEC has been designed to be efficient and simple. To change, add, or delete an effect, simply push the Effect Selector button (4); this selects the effect to edit; the currently selected effect number will appear in the LED Display (5). Then use the Bank/Edit buttons (7) to increment up or down through the effects and effect values. When the desired effect has been found, press the Store Button (6). When the Store Button (6) has been pressed, the store light will blink; this is the BASSTEC asking where you would like the program saved. Use the Bank/Edit buttons (7) to select the desired program number, press the Store Button (6) one more time to save. To remove a currently active effect, press the Effect Selector button (4) twice and — will appear, then press the Store Button (6). This removes the effect from the chain. If the effect is bypassed, this operation will activate the effect.

Bypassing

To bypass, simply press the Footswitch (1) of the program you are currently using. BP will appear in the LED Display (5); this will bypass the BASSTEC completely. To re-engage the BASSTEC, press any footswitch.

Tuner activation

To activate the tuner, press and hold the Footswitch (1) of the program you are currently using. You will appear in the LED display (5). To tune, pluck the string repeatedly, and the second vertical row of LEDs will show the status of the note, sharp or flat. The LED Display will show the note value.

Enveloped effects

The BASSTEC contains an exciting new bass effect DOD likes to call PSYCHOBASS. These new effects are phasors and flangers that are enveloped. This means they will

respond to the strength of your attack, creating tones previously attainable only by synthesis.

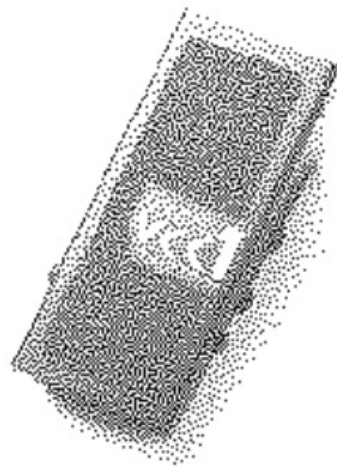
Factory reset

Caution: this function will revert BASSTEC to factory default. All user programs will be erased. Hold down both the Compressor and Reverb buttons while powering up the BASSTEC. The display will read rS. The BASSTEC has now reverted to factory default.

Accessories for the BASSTEC



Gig Bag



VCC1 Volume/Continuous Controller

- DOD Electronics
- 8760 South Sandy Parkway
- Sandy, Utah, 84070
- Telephone [801-566-8800](tel:801-566-8800)
- FAX [801-566-7005](tel:801-566-7005)
- International Distribution: 3 Overlook Drive, Unit 4
- Amherst, New Hampshire 03031 U.S.A.
- FAX [603-672-4246](tel:603-672-4246)
- BASSTEC is a registered trademark of DOD
- Electronics
- Copyright © 1997
- DOD Electronics

- Printed in U.S.A.
- BASSTEC

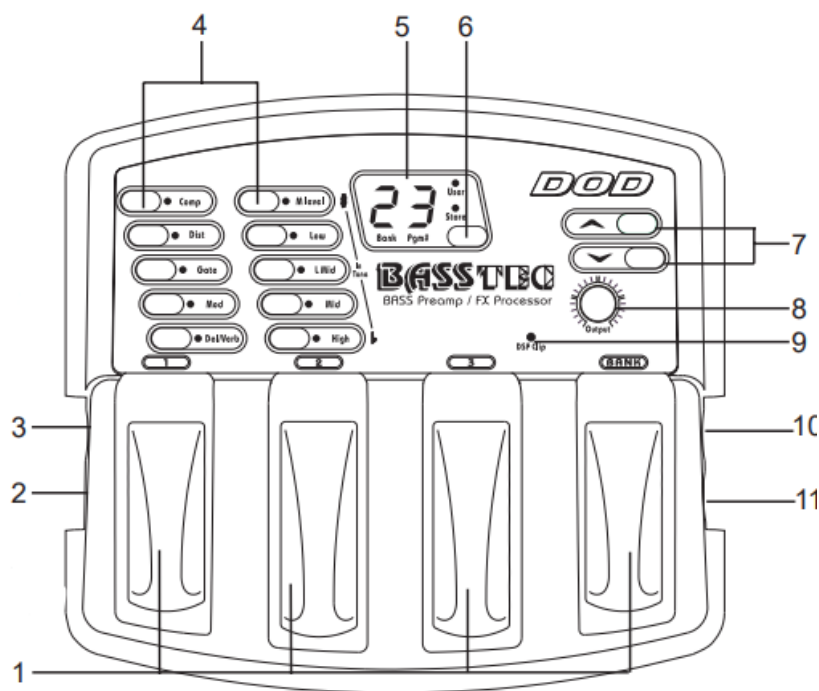
DECLARATION OF CONFORMITY	
Manufacturer's Name: DOD Electronics Corporation	
Manufacturer's Address:	8760 S. Sandy Parkway Sandy, Utah 84070, USA
declares that the product	
Product Name:	BASSTEC
Product Options: All	conforms to the following product specifications:
Safety:	EN 60065 (1993) IEC63 (1985) with Amendments 1,2,3
EMC:	EN 55013: (1990) EN 55020: (1991)
Supplementary Information:	
The product herewith complies with the requirements of the Low Voltage Directive 73/23/EEC and the EMC Directive 89/336/EEC as ammended by directive 93/68/EEC.	
DOD Electronics Corporation President of DOD 8760 S. Sandy Parkway Sandy, Utah 84070, USA	
Effective:	8/26/97
European Contact: Your Local DOD Sales and Service Office or	
International Sales Office 3 Overlook Drive #4 Amherst, New Hampshire 03031, USA Tel (603) 672-4244 Fax (603) 672-4246	

Warranty

1. The warranty registration card must be mailed within ten days after the purchase date to validate this warranty.
2. DOD warrants this product, when used solely within the U.S., to be free from defects in materials and workmanship under normal use and service.
3. DOD liability under this warranty is limited to repairing or replacing defective materials that show evidence of defect, provided the product is returned to DOD WITH RETURN AUTHORIZATION,
where all parts and labor will be covered up to a period of one (1) year. A Return Authorization number may be obtained from DOD by telephone. The company shall not be liable for any consequential damage as a result of the product's use in any circuit or assembly.
4. Proof of purchase is considered to be the burden of the consumer.

5. DOD reserves the right to make changes in design or make additions to or improvements upon this product without incurring any obligation to install the same on products previously manufactured.
6. The foregoing is instead of all other warranties, expressed or implied, and DOD neither assumes nor authorizes any person to assume for it any obligation or liability in connection with the sale of this product. In no event shall DOD or its dealers be liable for special or consequential damages or from any delay in the performance of this warranty due to causes beyond their control.

MULTI-EFFECTS PROCESSING



1. Program and bank selector footswitches. These footswitches provide access to the BASSTEC's banks/programs.
2. Power adapter input: This is where the DOD PS200R power supply is connected. Use only the DOD PS200R; other adapters will damage the BASSTEC and void the warranty.
3. Mix/Wah/Volume/Sensitivity control input Connect optional DOD VCC1 to have real-time control over volume levels, wah ranges, fx mix, and auto wah sensitivity.
4. Effect selector buttons: These buttons allow you to select the effects you wish to use or bypass.
5. The LED display in program mode shows which bank and program is currently selected. In Edit mode, it shows the number and/or status of the selected effect. In

Tuner mode, it displays the note currently being played.

6. Store Button Use this button to store your custom programs in the user memory location of choice.
7. Up/Down button:s These buttons scroll up/down selected effects (edit mode), or up/down through banks/presets (performance mode).
8. Output Knob Controls the overall output level sent to your amplifier input.
9. Clip LE:D The clip LED lights when clipping occurs at the input of the BASSTEC. To eliminate clipping, reduce the setting of your guitar level. Allow the LED to light occasionally with peak signals.
10. Output jack: Connect a cable from this jack to your amplifier input; it also doubles as a headphone output.
11. Input jack. Plug in your instrument here.

DIGITAL/ANALOG PRESETS

FACTORY PRESETS

- 01. CHORUS/SLAP CLEAN
- 02. ENVELOPE PHASE
- 03. SYNTH EFFECT
- 11. RAY-O-DRIVE
- 12. GRINDWAH
- 13. ENVELOPED FLANGE
- 21. ESSVEETEE-OVERDRIVE
- 22. FLANGE
- 23. BIG FRETLESS CHORUS
- 31. SLAP
- 32. PIECE AND HARMONY
- 33. COMP W/CHORUS
- 41. PHASOR W/DISTORTION
- 42. AUTOSWELL
- 43. DEEP SMOKEY REGGAE
- 51. RING MOD
- 52. TREMOLO
- 53. DISTORTION W/TREMOLO

- 61. PICKERS BASS
- 62. SOLO W/DELAY AND VERB
- 63. BASS SOLO TAKE 2
- 71. PHAT OVERDRIVE
- 72. INDUSTRY
- 73. THICK PIXELLATOR
- 81. ENVELOPE FLANGE
- 82. DELAY/FLANGE
- 83. OCTAVE DOWN
- 91. MILD OVERDRIVE
- 92. CHORUS
- 93. COMPRESSION

FX LIST

Master Level: 0-99

Noise Gate: 1-15

- 1-6: Increase gate threshold and hysteresis
- 7-9: Fast swell with increasing thresh. and hyst. (100ms)
- 10-12: Medium swell with increasing thresh. and hyst.(500ms)
- 13-15: Slow swell with increasing thresh. and hyst. (1000ms)

Modulations

- C0-C9: Chorus, 3 slow, 4 medium, 3 fast.
- F0-F9: Flanger, 4 slow, 3 medium, 3 fast.
- P0-P9: Phasor, 4 slow, 3 medium, 3 fast.
- t0-t8: Tremolo, Increasing speed.
- r0-r6: Ring Modulator, Increasing ring.
- I0-I9: Pixellator, 1-7 increasing pixellation, 7-9 random.
- S0-S9: Pitch shifter, 12(oct) down, 5th down, 4th down, 3rd down, b3rd down, b3rd up, 3rd up, 4th up, 5th up, 12(oct) up.
- d0-d8: Detune, 3@5 cents, 3@10 cents, 3@15 cents.

- H0-H2: Wah, ranges 1-3
- A0-A5: Auto Wah, ranges 1-6, decreasing sensitivity
- E0-E9: Psychobass Envelope FX, 0-4 Envelope Flanger, 5- b 9 Envelope Phasor

Delay: 01-99

No Reverb

- **01-09:** 60ms, increasing feedback and delay mix.
- **11-19:** 100ms, increasing feedback and delay mix.
- **21-29:** 250ms, increasing feedback and delay mix.
- **31-39:** 400ms, increasing feedback and delay mix.

Light Reverb

- 41-49: 100ms, increasing feedback and delay mix.
- 51-59: 250ms, increasing feedback and delay mix.
- 61-69: 400ms, increasing feedback and delay mix.

Heavy Reverb

- 71-79: 100ms, increasing feedback and delay mix.
- 81-89: 250ms, increasing feedback and delay mix.
- 91-99: 400ms, increasing feedback and delay mix.

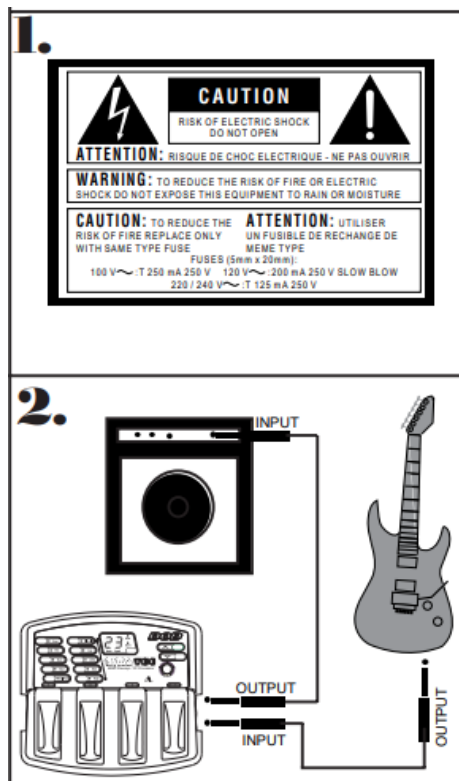
Compression: 1-11

- 1-5: Passive pickup, Increasing compression
- 6: Active pickup, No compression
- 7-11: Active pickup, Increasing compression
- Distortion: 1-15
- 1-8: Warm-O-Drive, increasing gain.
- 9-15: Grunge, increasing gain.
- EQ Lo: -12 to +12 in steps of 2 dB.(120Hz)
- EQ MidLo: -12 to +12 in steps of 2 dB.(250Hz)

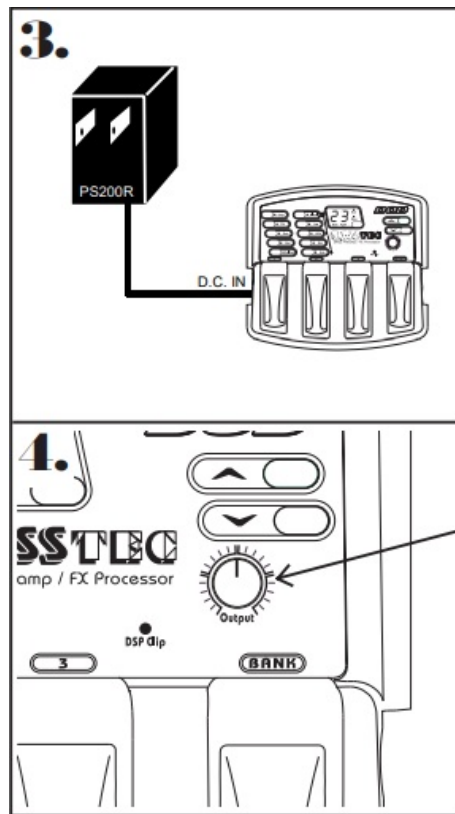
- EQ MidHi: -12 to +12 in steps of 2 dB.(800Hz)
- EQ Hi: -12 to +12 in steps of 2 dB.(5000Hz)

QUICK START

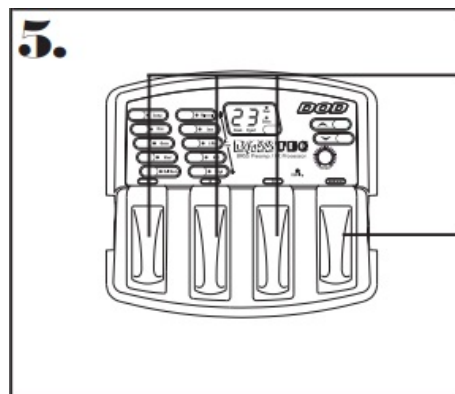
- **Safety Info:** Read all safety instructions before operating BASSTEC
- **Input Connection:** Insert a 1/4" cable from the guitar to the BASSTEC input.
- **Output Connection:** Insert a 1/4" cable from the BASSTEC output to the amplifier input.



- **Power:** Make sure the DOD PS200R adapter is connected. Do not use any other power supply.
- **Output Level:** Set your output level to 12 o'clock with the Output Knob.



- **Banks/Presets:** The left 3 footswitches provide access to presets. The far right footswitch scrolls up through banks.



FAQs

What are the accessories available for the BASSTEC?

Accessories include a Gig Bag and the VCC1 Volume/Continuous Controller.

Documents / Resources



[DigiTech BassTec Power Supply \[pdf\]](#) User Manual

BassTec Power Supply, BassTec, Power Supply

References

- [User Manual](#)

🔍 BassTec, BassTec Power Supply, DigiTech, Power

📁 DigiTech Supply

Leave a comment

Your email address will not be published. Required fields are marked *

Comment *

Name

Email

Website

☐ Save my name, email, and website in this browser for the next time I comment.

Post Comment

Search:

e.g. whirlpool wrf535swhz

Search

[Manuals+](#) | [Upload](#) | [Deep Search](#) | [Privacy Policy](#) | [@manuals.plus](#) | [YouTube](#)

This website is an independent publication and is neither affiliated with nor endorsed by any of the trademark owners. The "Bluetooth®" word mark and logos are registered trademarks owned by Bluetooth SIG, Inc. The "Wi-Fi®" word mark and logos are registered trademarks owned by the Wi-Fi Alliance. Any use of these marks on this website does not imply any affiliation with or endorsement.