

**digitech**

AM4051 UHF  
Headset  
Microphone Kit



## digitech AM4051 UHF Headset Microphone Kit Instruction Manual

[Home](#) » [Digitech](#) » digitech AM4051 UHF Headset Microphone Kit Instruction Manual 

### Contents

- [1 Digitech AM4051 UHF Headset Microphone Kit](#)
- [2 BEFORE FIRST USE](#)
- [3 BOX CONTENTS](#)
- [4 FEATURES](#)
- [5 PRODUCT DIAGRAM](#)
- [6 OPERATION INSTRUCTIONS](#)
- [7 TROUBLESHOOTING](#)
- [8 SPECIFICATIONS](#)
- [9 WARRANTY INFORMATION](#)
- [10 Documents / Resources](#)
  - [10.1 References](#)
- [11 Related Posts](#)

**digitech**

**Digitech AM4051 UHF Headset Microphone Kit**



## BEFORE FIRST USE

Prior to using your product, please read all the safety and operating instructions thoroughly. Please ensure you follow the steps below before using the product. We recommend you keep the original packaging for storing the product when not in use.

Find a safe and convenient place to keep this instruction manual for future reference.

Unpack the product but keep all packaging materials until you have made sure your new product is undamaged and in good working order. Ensure you have all accessories listed in this manual.

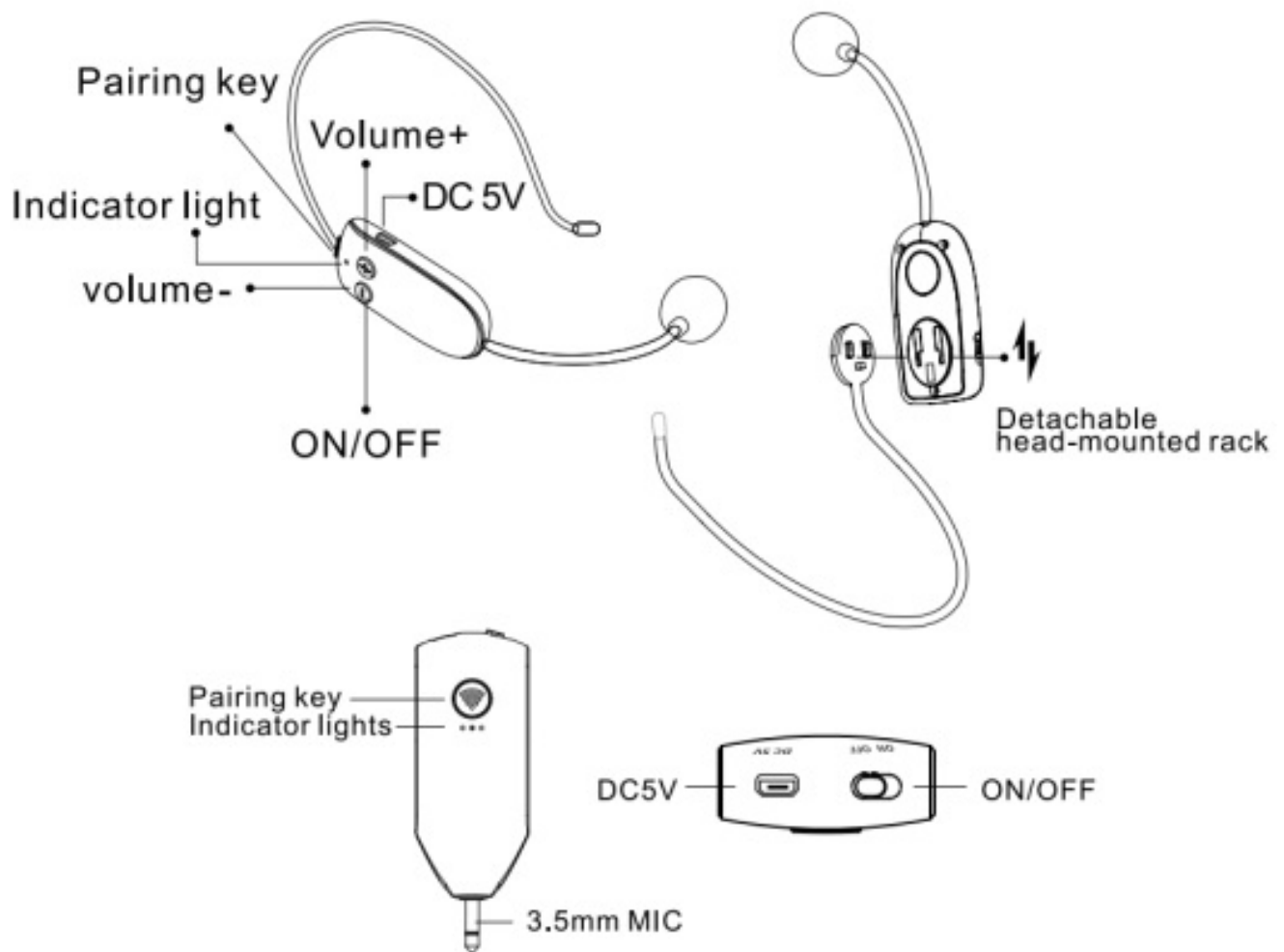
## BOX CONTENTS

- 1 x Wireless UHF Headset
- 1 x Wireless Transmitter
- 1 x 2-Way USB Charging Cable
- 1 x 6.5mm Plug to 3.5mm Socket Adaptor

## FEATURES

- Stylish, ergonomic, and comfortable design
- UHF high-frequency wireless technology with a long transmission distance
- DIGITECH Hi-Fi amplification electro-acoustic system
- Detachable head-mounted rack supporting headset and hand-held usage
- Built-in polymer battery with high capacity
- Suitable for any audio device with a mic input to enable wireless amplification

## PRODUCT DIAGRAM



## OPERATION INSTRUCTIONS

### Switch On

Put the power button to the “ON” position to turn on the device and to the “OFF” position to turn it off.

### Indicator Lights

- **a. Blue Indicator Light:** This light indicates pairing status and low battery.
  - **Pairing:** When it is blinking, it means the device is waiting to pair with the wireless headset microphone. When the blue light stops blinking and remains on, it indicates that they have paired successfully.
  - **Low Battery:** If the blue light blinks frequently during use, it means the receiver has a low battery. Please turn it off and charge it with a Micro-USB cable connected to a DC 5V charger.
- **b. Red Indicator Light:** This light indicates charging status. When charging, the light remains on continuously, and after fully charged, the red indicator light will turn off.
 

**NOTE:** The receiver cannot be paired when charging.
- **c. Green Indicator Light:** This light indicates that the power is on. When the receiver is turned on, the light remains on continuously. When the receiver is powered off, the green indicator light will be off.

### MIC Plug (Connect to Speaker’s MIC Port)

Connect the receiver to an audio device with a “MIC in” function (3.5 mm) and switch on the receiver and wireless microphone to activate the wireless mic.

If the “MIC in” port is 6.5 mm, please use the 3.5 mm to 6.5 mm connector included in the standard package. 3.5Ø -

6.5Ø connector in the standard package if the “MIC in” is 6.5Ø.

**NOTE:** You need an additional audio device with a mic input jack (such as an amplifier or karaoke speaker) to output the sound.



**NOTE:** Not compatible with smartphones, tablets, computers, or Apple products, even with an adaptor

#### Micro-USB Port (DC 5V)

Please turn off the device and charge it using a micro-USB cable connected to a DC 5V charger. When charging, the red light will remain on continuously; it will turn off when the battery is fully charged.

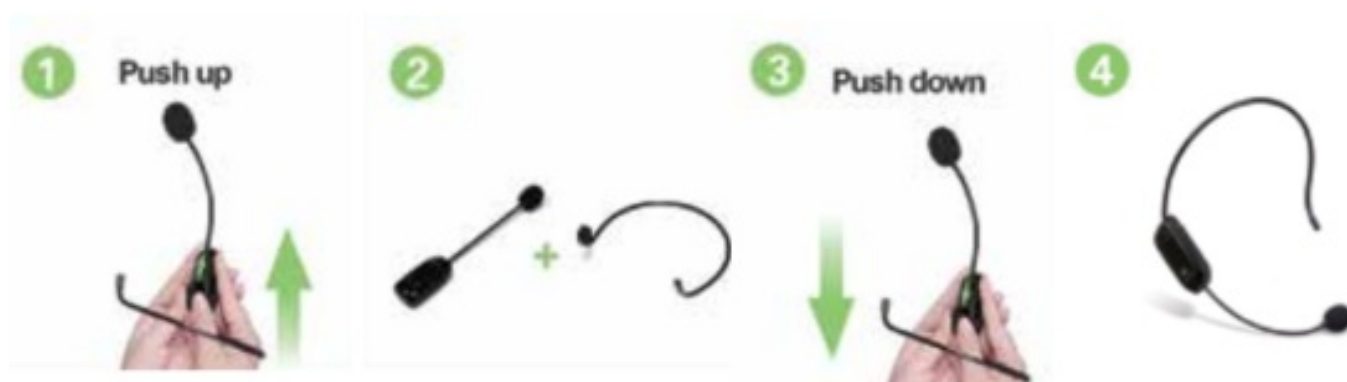
**NOTE:** Charging Time: 3–4 hours. We recommend fully charging the device before using it for the first time. Please unplug the charger as soon as it is fully charged.

#### Pairing the UHF Frequency Manually

1. Turn on the receiver and briefly press the pairing key on the receiver; the blue indicator light will blink.
2. Turn on the wireless mic and press and hold the pairing key on the top of the mic for about 3 seconds. The blue indicator light will stop blinking once pairing is successful.
3. Test to see if the wireless mic is functioning properly.

**NOTE:** When in use, press and hold the pairing key on the wireless microphone to disconnect the UHF mode from the speaker. To reconnect, please follow the steps above to pair manually. In UHF amplification mode, briefly press the “+/-” button to increase or decrease the volume.

#### How to disassemble & install the wireless Mic



### How to charge the wireless Mic

The blue light blinks when the headset's battery is low. Please turn it off and charge it using a micro-USB cable connected to a DC 5V charger. When charging, the red light will remain on continuously; it will turn off when the battery is fully charged.

**NOTE:** Unplug the charger as soon as the headset is fully charged. The headset will enter sleep mode if it is not used for 20 minutes. Briefly press “+” or “-” to wake it up.

## TROUBLESHOOTING

ISSUE	SOLUTION
<b>No sound</b>	<ul style="list-style-type: none"><li>• Please confirm that both the mic and receiver have batteries.</li><li>• The connection between the mic and receiver may be lost. Please pair them manually again.</li></ul>
<b>With screaming sound</b>	<ul style="list-style-type: none"><li>• Please keep the speaker facing away from the microphone, and maintain a distance of more than 60 cm between the audio device and the mic to avoid feedback.</li><li>• If using in a small room, please lower the volume to prevent feedback.</li></ul>
<b>Sound is very weak</b>	Please briefly press “+” to increase the microphone volume, and adjust the volume on your speaker as well.
<b>Please recharge the devices timely if low battery</b>	<ul style="list-style-type: none"><li>• Receiver: The blue light blinks while in use, indicating that the receiver's battery is low.</li><li>• Wireless Mic: The blue light blinks when the headset's battery is low.</li></ul>

**NOTE:** Please turn off the receiver and wireless mic and charge them using the dual micro-USB charging cable connected to a DC 5V charger. The devices must be fully recharged every 2 months when not in use.

## Technical Support

Only qualified technicians should disassemble or fix the product; non-professionals are prohibited from doing so. If replacement parts are needed, using original accessories is recommended. For any questions or service requests, please reach out to a local agent.

Ensure that the receiver and wireless microphone are stored in a dry, cool, and well-ventilated area. Keep them away from rain, water, fire, and other hot environments. It's important to keep the product and its accessories away from children.

## SPECIFICATIONS

<b>Microphone Type</b>	Unidirectional Condenser
<b>UHF Frequency</b>	520-526MHz
<b>Frequency Response</b>	30Hz-23kHz
<b>Transmission Distance</b>	Up to 10m
<b>Output Impedance</b>	$\leq 2.2K\Omega$
<b>Sensitivity</b>	-41dB+1dB
<b>Working Time</b>	3-5 Hours
<b>Charging Time</b>	2-3 Hours
<b>Battery</b>	Li-ion 3.7V, 380mA (Transmitter & Headset)
<b>Power</b>	5VDC, 500mA (Transmitter & Headset)
<b>Dimensions</b>	65(L) × 33(W) × 15(H)mm (Headset) 185 (L) × 30 (W) × 10(H)mm (Receiver)

## WARRANTY INFORMATION

Our product is guaranteed to be free from manufacturing defects for a period of 12 Months.

If your product becomes defective during this period, Electus Distribution

will repair, replace, or refund where a product is faulty; or not fit for intended purpose.

This warranty will not cover modified product; misuse or abuse of the product contrary to user instructions or packaging label; change of mind and normal wear and tear.

Our goods come with guarantees that cannot be excluded under the Australian Consumer Law. You are entitled to a replacement or refund for a major failure and for compensation for any other reasonably foreseeable loss or damage. You are also entitled to have the goods repaired or replaced if the goods fail to be of acceptable quality and failure does not amount to a major failure.

To claim warranty, please contact the place of purchase. You will need to show receipt or other proof of purchase. Additional information may be required to process your claim.

Any expenses relating to the return of your product to the store will normally have to be paid by you.

The benefits to the customer given by this warranty are in addition to other rights and remedies of the Australian Consumer Law in relation to the goods or services to which this warranty relates.


### This warranty is provided by:

Electus Distribution

Address 46 Eastern Creek Drive, Eastern Creek NSW 2766

Ph. 1300 738 555

## Documents / Resources

	<p><a href="#">digitech AM4051 UHF Headset Microphone Kit</a> [pdf] Instruction Manual</p> <p>AM4051 UHF Headset Microphone Kit, AM4051, UHF Headset Microphone Kit, Headset Microphone Kit, Microphone Kit</p>
---	---

## References

- [User Manual](#)

**Manuals+**, **Privacy Policy**

This website is an independent publication and is neither affiliated with nor endorsed by any of the trademark owners. The "Bluetooth®" word mark and logos are registered trademarks owned by Bluetooth SIG, Inc. The "Wi-Fi®" word mark and logos are registered trademarks owned by the Wi-Fi Alliance. Any use of these marks on this website does not imply any affiliation with or endorsement.