

DIGITAL WATCHDOG DWC-MV421DB Outdoor Dome IP Camera



# DIGITAL WATCHDOG DWC-MV421DB Outdoor Dome IP Camera User Guide

[Home](#) » [DIGITAL WATCHDOG](#) » DIGITAL WATCHDOG DWC-MV421DB Outdoor Dome IP Camera User Guide 

## Contents

- [1 DIGITAL WATCHDOG DWC-MV421DB Outdoor Dome IP Camera](#)
- [2 Product Information](#)
- [3 Product Usage Instructions](#)
- [4 WHAT'S IN THE BOX](#)
- [5 Resetting the camera](#)
- [6 INSTALLATION INSTRUCTION](#)
- [7 Documents / Resources](#)
  - [7.1 References](#)



**DIGITAL WATCHDOG DWC-MV421DB Outdoor Dome IP Camera**



## Product Information

### Specifications

- Model: DWC-MV421DB (Dome Camera) / DWC-MV421TIRB (IR Dome Camera)
- Default Login Information:
  - Username: admin
  - Password: admin
- Power Requirements: DC 12V PoE IEEE 802.3af / PoE Class 3
- Power Consumption:
  - LED Off: 7.2W, 600mA
  - LED On (IR models): 8.64W, 720mA

## Product Usage Instructions

### Mounting the Camera

The mounting surface must be able to bear five times the weight of the camera.

### Cable Management

Avoid letting the cables get caught in improper places or damaging the electric line cover, as this may cause a breakdown or fire.

### Installation Process

To install the camera, follow these steps:

1. Remove the junction box and dome cover from the camera module.
2. To remove the camera dome, use the provided wrench to loosen the three screws on the dome.
3. To remove the junction box, use the provided driver to loosen the three screws on the camera module.

## Mounting Template

Use the provided mounting template sheet or the camera's junction box to mark and drill the necessary holes in the wall or ceiling.

### **Securing the Junction Box**

Secure the junction box to the mounting surface.

### **Wiring Connections**

Pass the wires through the mount bracket and make all necessary connections.

### **Attaching the Camera Module**

Secure the camera module to the junction box using three screws.

### **Adjusting Camera Position**

Use the camera's 3-axis gimbal to adjust the camera's tilt and angle.

### **Resetting the Camera**

To reset the camera, press the reset button using the tip of a paper clip or a pencil. Pressing the button for five seconds will initiate a camera-wide reset of all settings, including network settings.

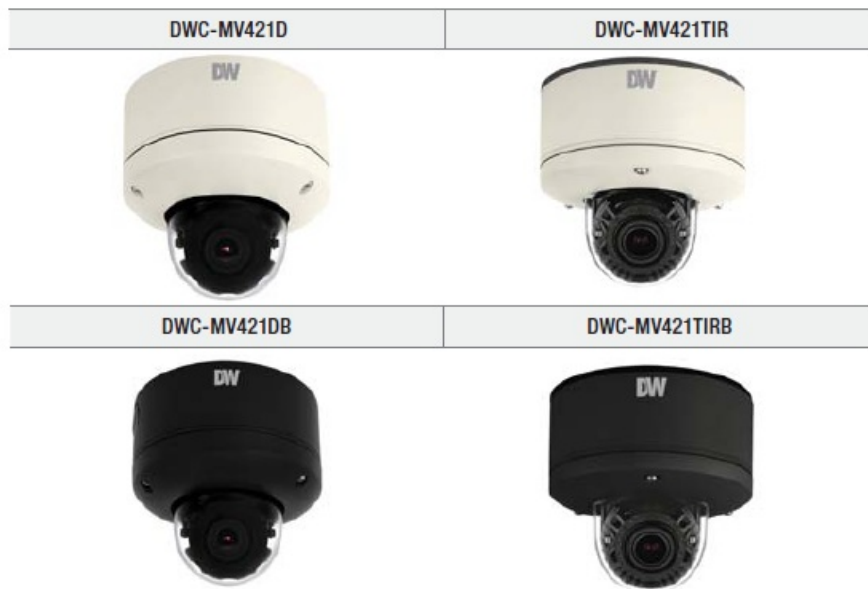
### **Network Setup**

1. Go to <http://www.digital-watchdog.com>.
2. Search for "IP Finder" on the quick search bar at the top of the page.
3. Download the latest IP Finder software to your computer from the search results.
4. The software will scan your network for all supported cameras and display the results in a table. Allow up to 5 seconds for the IP Finder to find the camera on the network.
5. Select a camera from the list by double-clicking on the camera's image or clicking on the "Click" button under the IP Conf. column. The camera's network information will appear.
6. If necessary, adjust the camera's network type. Select DHCP if the internet service is dynamic IP, or select STATIC to manually enter the camera's IP address, subnet mask, Gateway, and DNS information. Contact your network administrator for more information.

### **FAQ**

- Q: Where can I find the default login information for the camera?
  - A: The default username is "admin" and the default password is "admin".
- Q: How do I reset the camera?
  - A: To reset the camera, press the reset button for five seconds using the tip of a paper clip or a pencil.
- Q: How do I adjust the camera's position?
  - A: Use the camera's 3-axis gimbal to adjust the camera's tilt and angle.
- Q: How do I set up the camera on my network?
  - A: Follow the network setup instructions provided in the user manual.








### **MODEL**



### Default Login Information

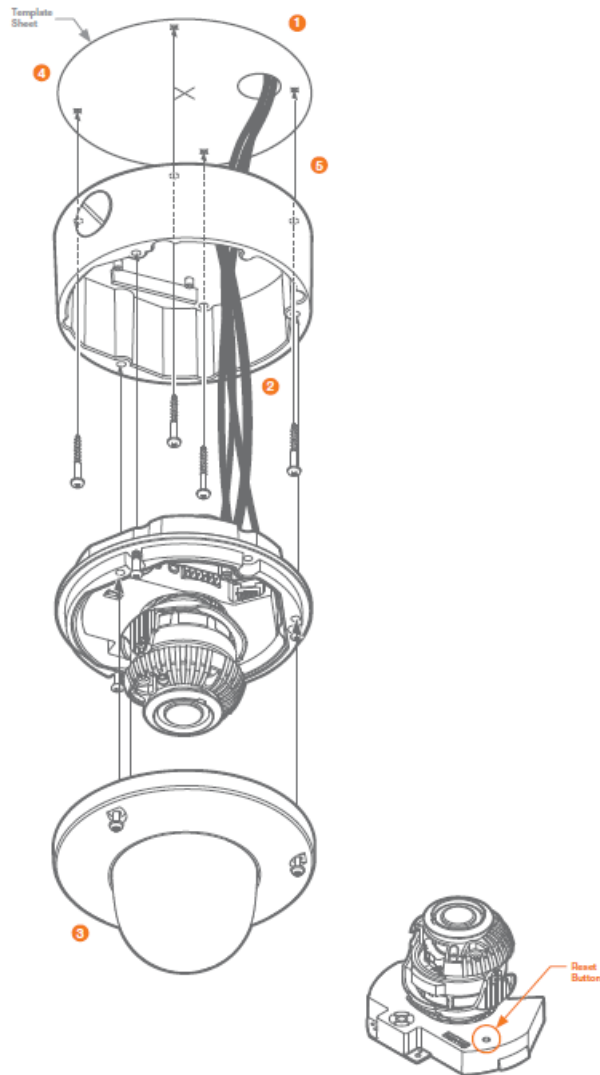
- Username: admin
- Password: admin

### WHAT'S IN THE BOX

QSG Manual		1 Set	Star Driver		1 Set
Test Video Cable		1 Set	Screw & Plastic Anchor – 4pcs		1 Set
Template Sheet		1 Set	DC Plug Cable		1 Set
Hexagonal Wrench		1 Set			

**Attention:** This document is intended to serve as a quick reference page for initial set-up. It is recommended that the user read the entire instruction manual for complete and proper camera usage

## Resetting the camera



To reset the camera, use the tip of a paper clip or a pencil and press the reset button. Pressing the button for five (5) seconds will initiate a camera-wide reset of all the settings, including network settings.

## INSTALLATION INSTRUCTION

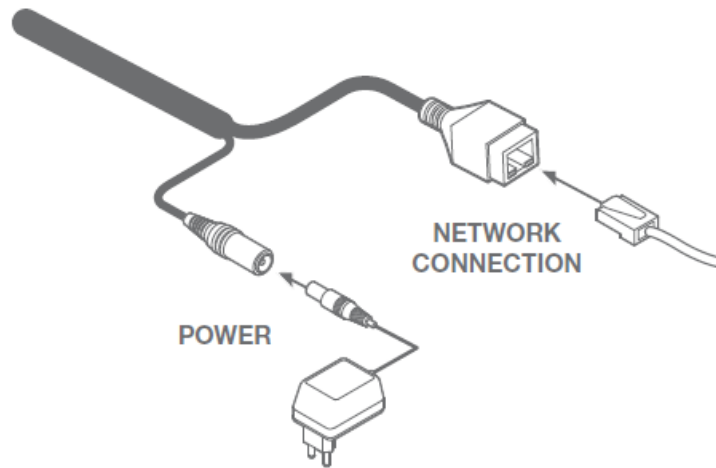
### Step 1 – PREPARING TO MOUNT THE CAMERA

1. The mounting surface must bear five times the weight of your camera.
2. Do not let the cables get caught in improper places or the electric line cover to be damaged. This may cause a breakdown or fire.
3. For the installation process, remove the junction box and dome cover from the camera module. To remove the camera dome, loosen the three (3) screws on the dome using the wrench provided with the camera. To remove the junction box, loosen the three (3) screws on the camera module using the driver provided with the camera.
4. Using the mounting template sheet or the camera's junction box, mark and drill the necessary holes in the wall or ceiling.
5. Secure the junction box to the mounting surface

### Step 2 – CABLING THE CAMERA TO EXTERNAL DEVICES

6. Pass the wires through the mount bracket and make all necessary connections.
  1. NETWORK CONNECTIONS – If you are using a PoE Switch, connect the camera using an Ethernet cable for both data and power.

2. NETWORK CONNECTIONS – If you are using a non-PoE switch, connect the camera to the switch using an Ethernet cable for data transmission and use a power adapter to power the camera

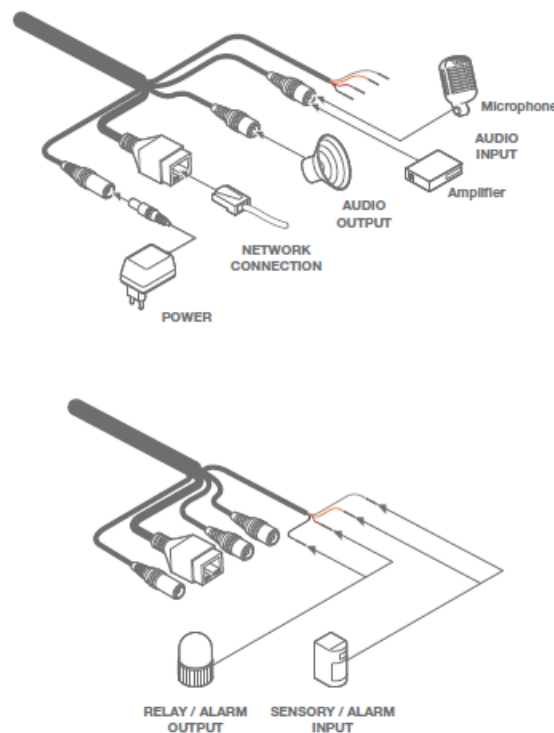


### Step 3 – INSTALLING THE CAMERA

7. Secure the camera module to the junction box using three (3) screws.
8. Use the camera's 3-Axis gimbal to adjust the camera's tilt and angle. The camera's maximum tilting angle is 75° (90° for non-IR models).
9. Assemble the dome cover over the camera body and detach the protecting film from the dome bubble.

### Step 4 – CABLING

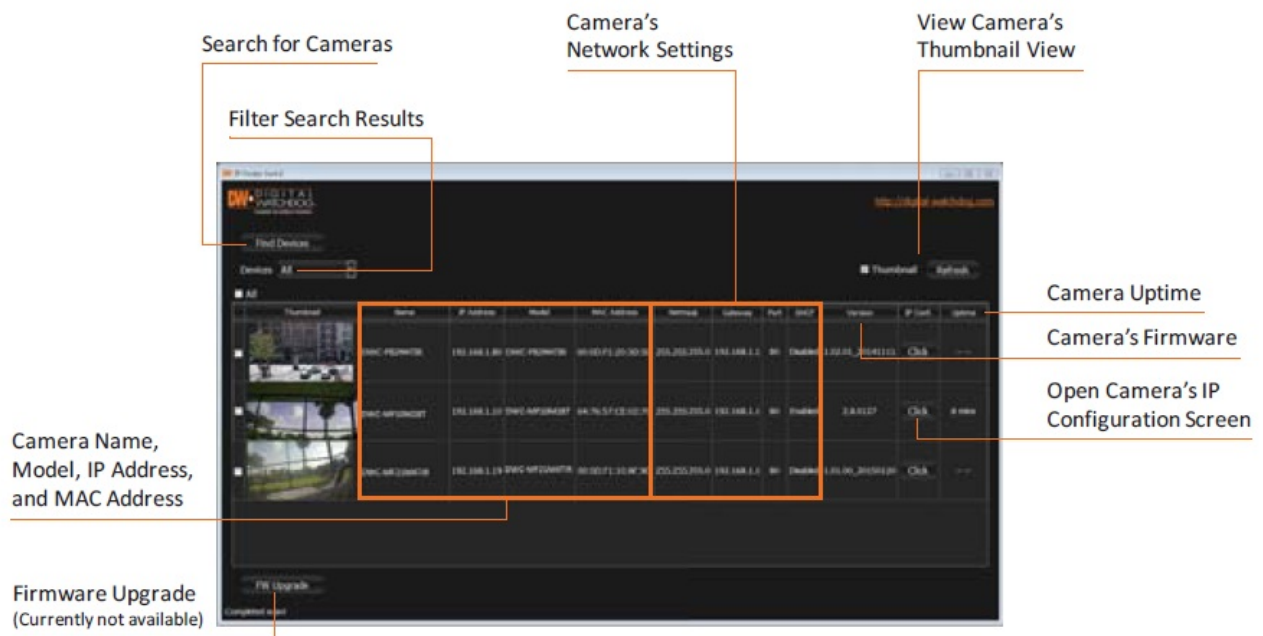
Use the diagram below to properly connect power, network, audio, alarm and sensors to the camera.



**Note:** The camera's maximum tilting angle is 75° (90° for non-IR models).

### Step 5 – DW IP FINDER™

Use the DW IP Finder™ software to scan the network and detect all MEGApix® cameras, set the camera's network settings or access the camera's web client.



## 10. Network Setup

1. Go to: <http://www.digital-watchdog.com>
2. Search for 'IP Finder' on the quick search bar at the top of the page.
3. The latest IP Finder software will appear in the search results. Click on the link to download the file to your computer.
4. The software will scan your network for all supported cameras and display the results in the table. Allow up to 5 seconds for the IP Finder to find the camera on the network.
5. Select a camera from the list by double-clicking on the camera's image or clicking on the 'Click' button under the IP Conf. column. The camera's network information will appear. If necessary, you can adjust the camera's network type.
  1. Select DHCP if the internet service is dynamic IP. This will allow the camera to receive its IP address from the DHCP server.
  2. Select STATIC to manually enter the camera's IP address, subnet mask, Gateway and DNS information.
  3. Contact your network administrator for more information
6. The camera's default network information is:

Default TCP/IP information

1. IP: DHCP
2. Subnet Mask: 255.255.255.0
3. Gateway: 192.168.1.123
4. DNS: 168.126.63.1

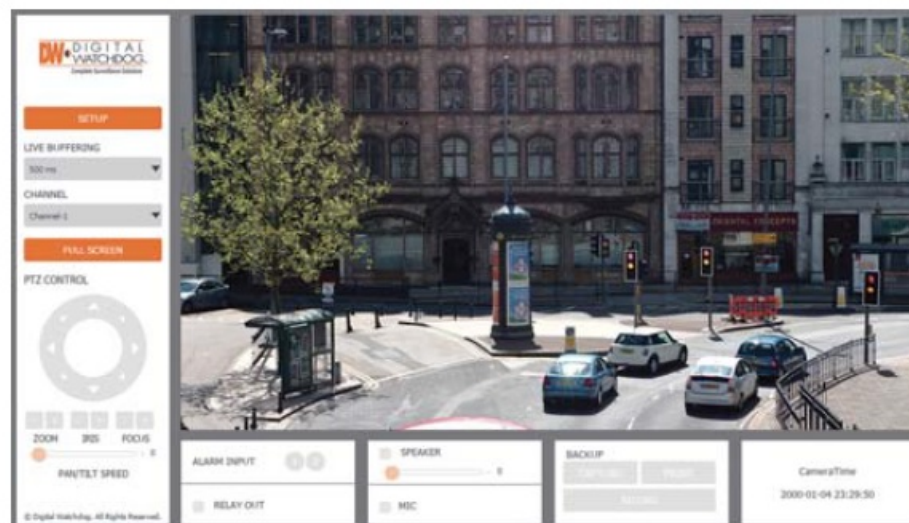
7. To view the camera's web viewer, click on 'View Camera Website'. Enter the camera's username and password (default: admin/ admin) to log in to the camera.

Port Forwarding has to be set in your network's router for external access to the camera.

Default ID / PW : admin/admin

8. To save the changes made to the camera's settings, input the ID and PW of the camera for authentication and click 'Save'.
9. If the camera needs to be rebooted after the settings are changed, press the 'Reboot' button. The camera will cycle power and will appear back in the search results once the reboot is complete.

## Step 6 – WEB VIEWER



Once the camera's network settings have been set up properly, you can access the camera's web viewer using the DW IP Finder™. To open the camera's web viewer:

1. Find the camera using the DW IP Finder™.
2. Double-click on the camera's view in the results table.
3. Press the 'View Camera Website'. The camera's web viewer will open up in your default web browser.
4. Enter the camera's username and password (default is admin/admin).
5. If you are accessing the camera for the first time, install the VLC player for web files to view video from the camera

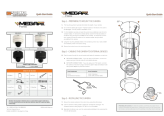
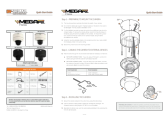

**Note:** Please see the full product manual for web viewer setup, functions, and camera settings



options

Copyright © Digital Watchdog. All rights reserved. Specifications and pricing are subject to change without notice.

## Documents / Resources

	<a href="#">DIGITAL WATCHDOG DWC-MV421DB Outdoor Dome IP Camera</a> [pdf] User Guide DWC-MV421DB Outdoor Dome IP Camera, DWC-MV421DB, Outdoor Dome IP Camera, Dome IP Camera, IP Camera, Camera
	<a href="#">DIGITAL WATCHDOG DWC-MV421DB Outdoor Dome IP Camera</a> [pdf] User Guide DWC-MV421DB Outdoor Dome IP Camera, DWC-MV421DB, Outdoor Dome IP Camera, Dome IP Camera, IP Camera, Camera
	<a href="#">DIGITAL WATCHDOG DWC-MV421DB Outdoor Dome IP Camera</a> [pdf] User Guide DWC-MV421DB, DWC-MV421TIRB, DWC-MV421DB Outdoor Dome IP Camera, Outdoor Dome IP Camera, Dome IP Camera, IP Camera, Camera

## References

- [DW Digital Watchdog I Welcome](#)
- [DW Digital Watchdog I Welcome](#)
- [Manual-Hub.com - Free PDF manuals!](#)
- [User Manual](#)

[Manuals+](#), [Privacy Policy](#)

This website is an independent publication and is neither affiliated with nor endorsed by any of the trademark owners. The "Bluetooth®" word mark and logos are registered trademarks owned by Bluetooth SIG, Inc. The "Wi-Fi®" word mark and logos are registered trademarks owned by the Wi-Fi Alliance. Any use of these marks on this website does not imply any affiliation with or endorsement.