



DIGITAL WATCHDOG DWC-MPH2W28TW Pinhole IP Camera with Fixed Lens User Guide

[Home](#) » [DIGITAL WATCHDOG](#) » DIGITAL WATCHDOG DWC-MPH2W28TW Pinhole IP Camera with Fixed Lens User Guide 

Contents

- 1 DIGITAL WATCHDOG DWC-MPH2W28TW Pinhole IP Camera with Fixed
- 2 Product Information
- 3 Quick Start Guide
- 4 Product Usage Instructions
- 5 WHAT'S IN THE BOX
- 6 SAFETY AND WARNING INFORMATION
- 7 INSTALLATION INSTRUCTIONS
- 8 Network Setup
- 9 WEB VIEWER
- 10 Documents / Resources
 - 10.1 References
- 11 Related Posts



DIGITAL WATCHDOG DWC-MPH2W28TW Pinhole IP Camera with Fixed



Product Information

The product is a camera module with a cable length of 21.3ft/6.5m. It comes with accessories such as tapping screws, double-sided tape for pinhole cover, ferrite core, rotating ring, anchor block, pinhole cover, 4pin terminal block, screws, surface mount bracket, cable clamps, and pan/tilt bracket. The default login information is admin | admin. It is recommended to read the entire instruction manual for complete and proper installation and usage.

Quick Start Guide

1. Download all support materials and tools from <http://www.digital-watchdog.com/resources>.
2. Search your product by entering the part number in the 'Search by Product' search bar.
3. Select the applicable part number from the results.
4. Follow the instructions in the manual for proper installation and usage.

Product Usage Instructions

Before using the camera, it is important to follow the safety and warning information provided in the manual. Here are some key points to keep in mind:

- Mount the camera firmly on a wall or ceiling.
- Use only the standard adapter specified in the specification sheet.
- Make sure the power supply voltage is correct before using the camera.
- Do not connect multiple cameras to a single adapter.
- Securely plug the power cord into the power source.
- Install the camera securely and firmly to prevent falling and personal injury.
- Avoid installing the camera in locations subject to elevated temperature, low temperature, or high humidity.

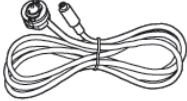
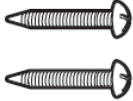

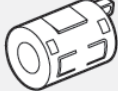










Follow the instructions in the manual for proper installation and usage. If the camera does not operate normally or emits unusual smells or smoke, stop using it immediately and disconnect the power source. Do not disassemble or change the product in any way. Contact the nearest service center for assistance.

- **DWC-MPH2W28TW:** MEGApix® IVA™ preloaded
- **DWC-MPPH2W28TW:** MEGApix® IVA+™ preloaded

Default Login Information: admin | admin

When logging into the camera for the first time, you must setup a new password. You can set the new password using the DW® IP Finder™ software or directly from the camera's browser menu

WHAT'S IN THE BOX

Camera Module and Cable (21.3ft/6.5m)		1	Tapping Screws (TP1 M3x20)		2 each
Double-Sided Tape for Pinhole Cover		1	Ferrite Core		1
Rotating Ring		1	Anchor Block (M4x25)		4 each
Pinhole Cover		1	Tapping Screws (TS1 M4x25)		5 each
4pin Terminal Block		1	Screws (TP2 M3x6(Ni))		2 each
Surface Mount Bracket		1	Cable Clamps		3 each
Pan/Tilt Bracket		1	Tapping Screws (TP1 M4x20)		3 each

NOTE: Download all your support materials and tools in one place.



1. Go to: <http://www.digital-watchdog.com/resources>
2. Search your product by entering the part number in the Search by Product' search bar.
Results for applicable part numbers will populate automatically based on the part number you enter.
3. Click 'Search'. All supported materials, including manuals and quick start guide (QSGs) will appear in the results.

Attention: This document is intended to serve as a quick reference for the initial set up. It is recommended that the user read the entire instruction manual for complete and proper installation and usage.

SAFETY AND WARNING INFORMATION

Read through this Installation Guide carefully before installing the product. Keep the Installation Guide for future

reference. See the user manual for more information on the proper installation, use and care of the product. These instructions are intended to ensure that users can use the product correctly to avoid danger or property loss.

Warnings: Serious injury or death may occur if any of the warnings are neglected. Cautions: Injury or equipment damage may occur if any of the cautions are neglected.

WARNING

1. In the use of the product, you must be strict compliance with the electrical safety regulations of the nation and region. When the product is mounted on a wall or ceiling, the device shall be firmly fixed.
2. Be sure to use only the standard adapter specified in the specification sheet. Using any other adapter could cause fire, electrical shock, or damage to the product.
3. Make sure the power supply voltage is correct before using the camera.
4. Incorrectly connecting the power supply or replacing the battery may cause an explosion, fire, electric shock, or damage to the product.
5. Do not connect multiple cameras to a single adapter. Exceeding the capacity may cause excessive heat generation or fire.
6. Securely plug the power cord into the power source. An insecure connection may cause a fire.
7. When installing the camera, fasten it securely and firmly. A falling camera may cause personal injury.
8. Do not install in a location subject to elevated temperature, low temperature, or high humidity. Doing so may cause fire or electric shock.
9. Do not place conductive objects (e.g. screwdrivers, coins, metal items, etc.) or containers filled with water on top of the camera. Doing so may cause personal injury due to fire, electric shock, or falling objects.
10. Do not install in humid, dusty, or sooty locations. Doing so may cause fire or electric shock.
11. Do not install near any heat sources such as radiators, heat registers, or other products (including amplifiers) that produce heat.
12. Keep out of direct sunlight and heat radiation sources. It may cause a fire.
13. If any unusual smells or smoke come from the unit, stop using the product at once. Immediately disconnect the power source and contact the service center. Continued use in such a condition may cause fire or electric shock.
14. If this product does not operate normally, contact the nearest service center. Never disassemble or change this product in any way.
15. When cleaning the product, do not spray water directly onto parts of the product. Doing so may cause fire or electric shock.

CAUTION

1. Use proper safety gear when installing and wiring the product.
2. Do not drop objects on the product or apply strong shock to it. Keep away from a location subject to excessive vibration or magnetic interference.
3. Do not use this product near water.
4. The product shall not be exposed to dripping or splashing and no objects filled with liquids, such as vases, shall be placed on the product.
5. Avoid aiming the camera directly towards extremely bright objects such as the sun, as this may damage the image sensor.
6. The Main plug is used as a disconnect device and shall stay readily operable at any time.

7. Remove the power adapter from the outlet when then there is lightning. Neglecting to do so may cause fire or damage to the product.
8. Do not block any ventilation openings. Install following the manufacturer's instructions.
9. A polarized or grounding-type plug is recommended for this product. A polarized plug has two blades with one wider than the other. A grounding-type plug has two blades and a third grounding prong. If the provided plug does not fit into your outlet, consult an electrician for replacement.
10. Protect the power cord from being walked on or pinched particularly at plugs, convenience receptacles, and the point where they exit from the product.
11. If any laser equipment is used near the product, make sure the surface of the sensor is not exposed to the laser beam as that may damage the sensor module.
12. If you want to move the already installed product, be sure to turn off the power and then move or reinstall it.
13. Proper configuration of all passwords and other security settings is the responsibility of the installer and/or end-user.
14. If cleaning is necessary, please use a clean cloth to wipe it gently. If the device will not be used for a long time, please cover the lens cap to protect the device from dirt.
15. Do not touch the camera's lens or sensor module with fingers. If cleaning is necessary, please use a clean cloth to wipe it gently. If the device will not be used for a long time, please cover the lens cap to protect the device from dirt.
16. Use only attachments/accessories specified by the manufacturer.
17. Always use hardware (e.g. screws, anchors, bolts, locking nuts, etc.) compatible with the mounting surface and of sufficient length and construction to ensure a secure mount.
18. Use only with cart, stand, tripod, bracket, or table specified by the manufacturer, or sold with the product.
19. Unplug this product when a cart is used. Use caution when moving the cart/product combination to avoid injury from tip-over.
20. Refer all servicing to qualified service personnel. Servicing is needed when the product has been damaged in any way, such as power supply cord or plug is damaged, liquid has been spilled or objects have fallen into the product, the product has been exposed to rain or moisture, does not operate normally, or has been dropped.

PREPARING TO MOUNT THE CAMERA

1. The mounting surface must support five times the camera weight.
2. Avoid allowing cables to become pinched or abraded during installation. If the plastic wire jacket of the electrical line is damaged, it could result in an electrical short or fire.
3. **CAUTION:** These servicing instructions are for use by qualified service personnel only. To reduce the risk of electric shock do not perform any servicing other than that contained in the operating instructions unless you are qualified to do so.
4. Ensure that this product is supplied power by a UL Listed Power Supply Unit marked "Class 2" or "LPS" or "PS2" and rated 12 Vdc, 0.30A or PoE (802.3af) 0.08A min.
5. The wired LAN hub providing power over the Ethernet (PoE) in accordance with IEEE 802.3af shall be a UL Listed device with the output evaluated as a Limited Power Source as defined in UL60950-1 or PS2 as defined in UL62368-1.
6. Unit is intended for installation in a Network Environment 0 as defined in IEC TR 62102. As such, associated Ethernet wiring shall be limited to inside the building

POWERING THE CAMERA

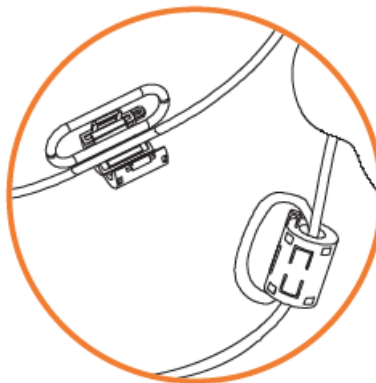
Pass the wires through and make all necessary connections. See STEP 4 for more information.

1. When using a PoE Switch or the PoE injector included with the camera, connect the camera using an Ethernet cable for both data and power.
2. When not using a PoE Switch or the PoE injector included with the camera, connect the camera to the switch using an Ethernet cable for data transmission and use a power adapter to power the camera

Power requirements	Power consumption
DC 12V, PoE IEEE 802.3af Class 3. (Adapter not included)	DC12V: 3.6W PoE: 4W

INSTALLATION INSTRUCTIONS

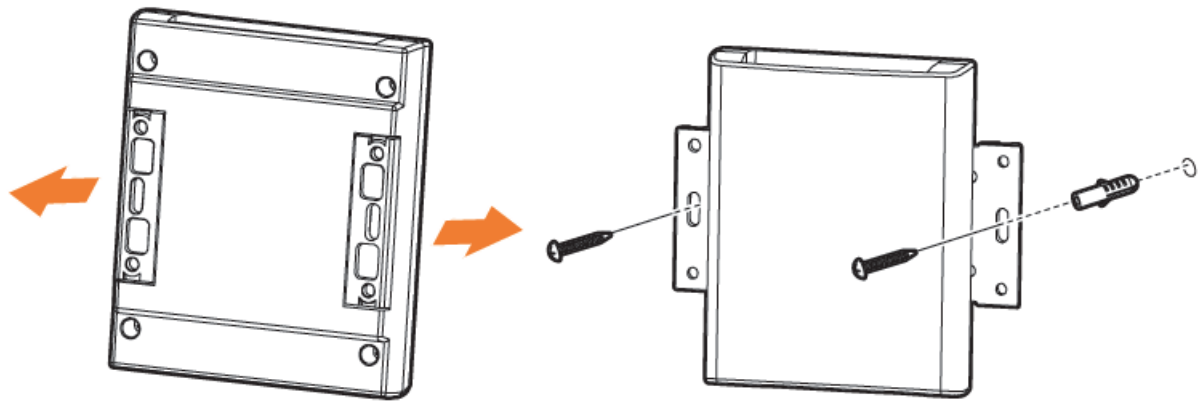
Install the ferrite core on the LAN cable to reduce high-frequency noise



- Open the ferrite core by lifting the closing clip.
- Make one loop with the cable through the ferrite core.
- Close the ferrite core to hold the cable loop in place.

INSTALLING THE MAIN UNIT

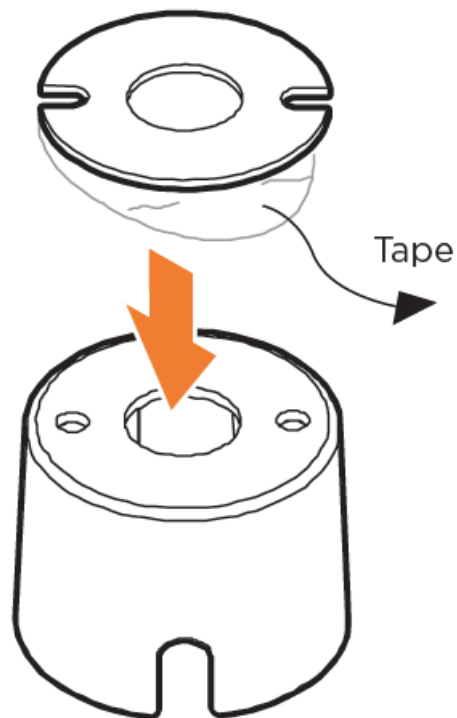
1. Pull out the slide plates at the bottom of the main unit.
2. Mark and drill the necessary holes in the mounting surface to align with the slide plates' holes.
3. Align the main unit with the mounting holes and secure it to the mounting surface using the included tapping screws and anchors.



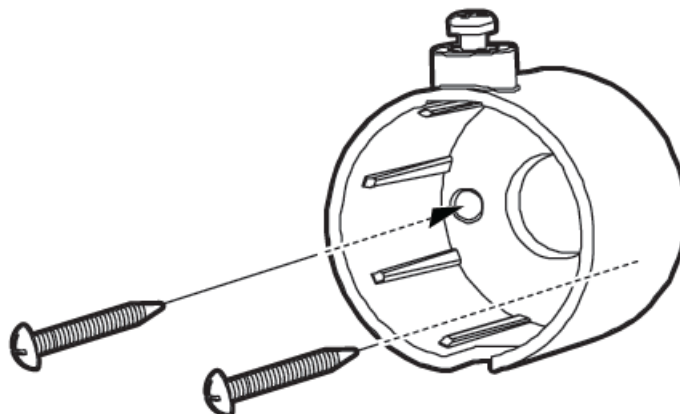
INSTALLING THE CAMERA MODULE

Concealed installation (Camera is mounted BEHIND the mounting surface, with the lens peeping through):

1. Drill a hole (diameter: 0.11"/ 3mm) on the mounting surface where the camera lens will be installed.
2. Peel off one side of the double-sided tape included with the camera, and attach it to the flat surface of the pinhole cover. Aligning the grooves on the tape with the screw holes on the pinhole cover.
3. Peel off the other side of the tape, and stick to the mounting surface. Align the pinhole cover and the mounting surface, keeping the top screw at the top of the pinhole cover upright.



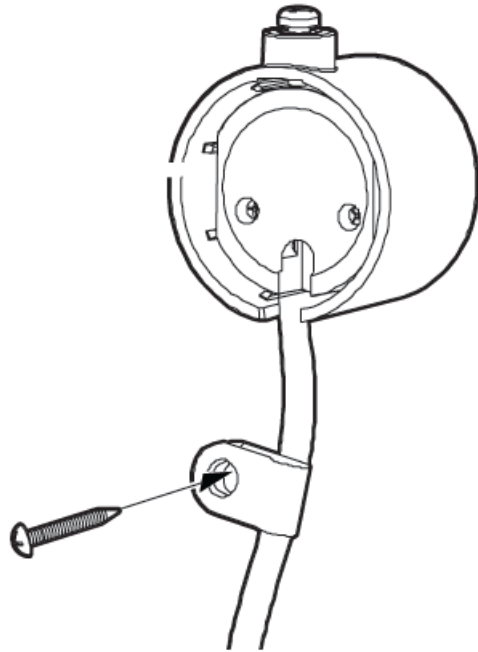
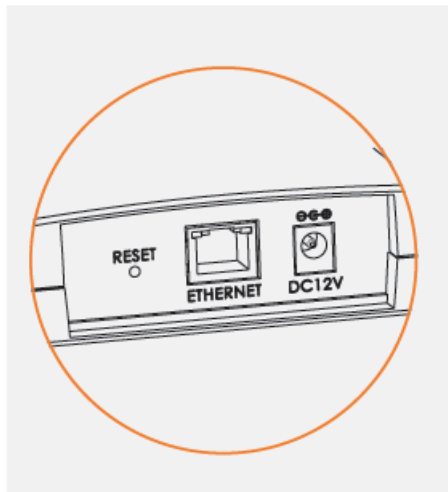
4. Secure the pinhole cover to the mounting surface using the tapping screws (M3x20) included with the camera.



5. Pass the camera's cable through the cable holder on the pinhole cover and place the camera module inside the

pinhole cover. The camera lens should be facing the mounting surface, aligned with the 1mm hole drilled in #1. Tighten the top screw head to fix the camera module in place.

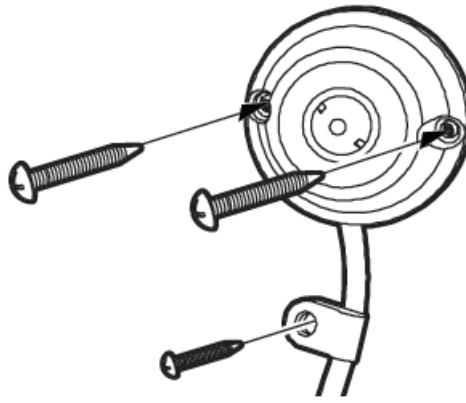
6. Use the cable clamps to secure the camera's cable with a tapping screw (M4x20) included with the camera (optional).



Resetting the camera: Press the reset button in the back of the main unit. Pressing the button for five (5) seconds will initiate a camera-wide reset of all the settings, including the network settings

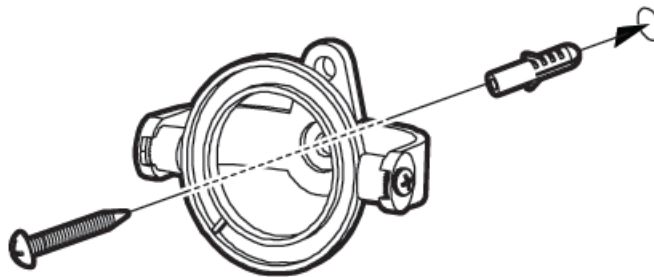
Visible installation:

1. Place the camera module on the installation surface.
2. Pass the camera module's cable into the cable holder on the bracket and cover the camera module with the surface mount bracket.
3. Secure the bracket to the mounting surface using the tapping screws (M3x20) and anchor blocks included with the camera.
4. Use the cable clamps to secure the camera's cable with a tapping screw (M4x20) included with the camera (optional).

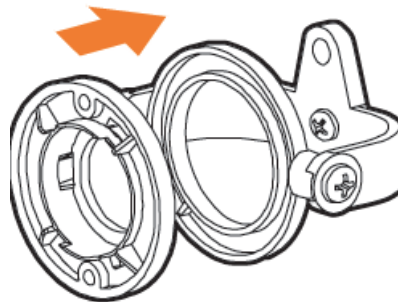


Visible installation with the pan/tilt bracket:

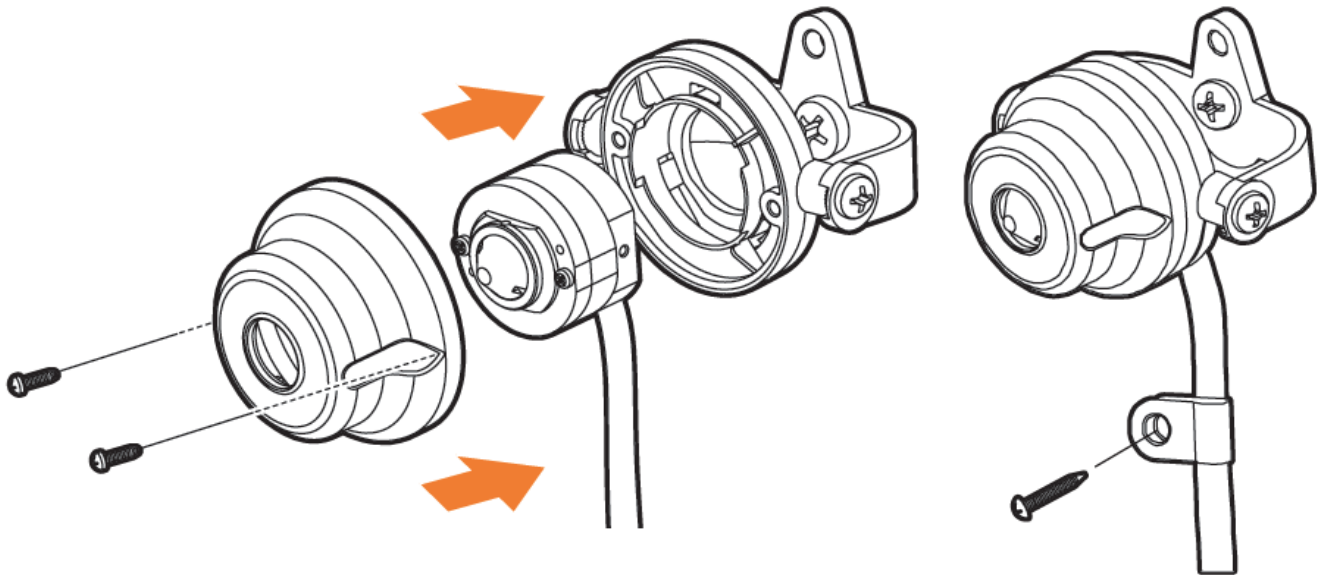
1. Drill a hole on the mounting surface, and insert an anchor block into the hole.
2. Secure the pan/tilt bracket to the mounting surface using the tapping screws (M4x25) included and tighten it into the anchor block



3. Press the rotate ring into the bracket's mount ring.
4. Place the camera module on the pan/tilt bracket. Make sure the lens is facing outward from the bracket
5. Secure the surface mount bracket on top of the camera module using the tapping screws (M3x6) included. Align the screw holes with the holes on the rotate ring on the pan/tilt bracket and tighten the screws to secure.

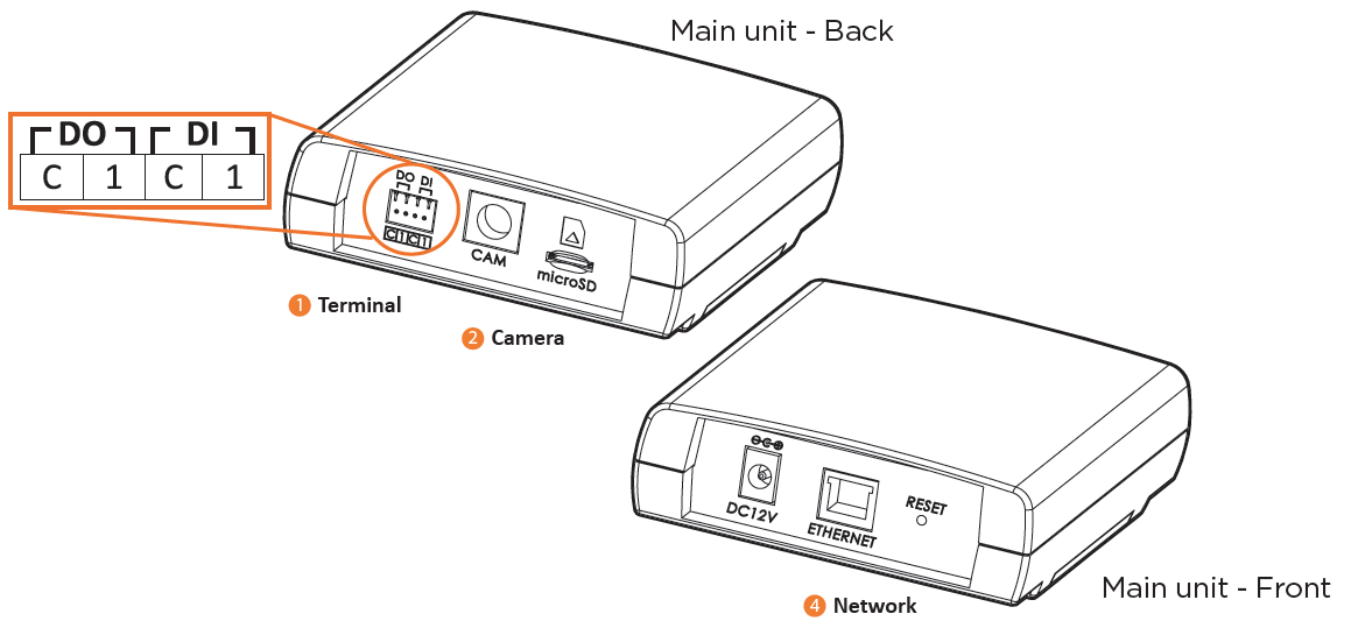


6. Use the cable clamps to secure the camera's cable with a tapping screw (M4x20) included with the camera (optional).



CABLING

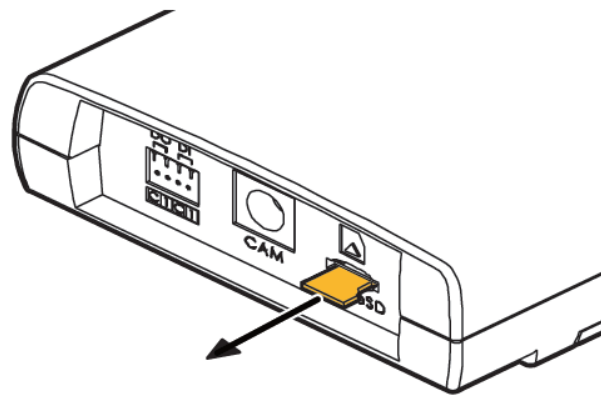
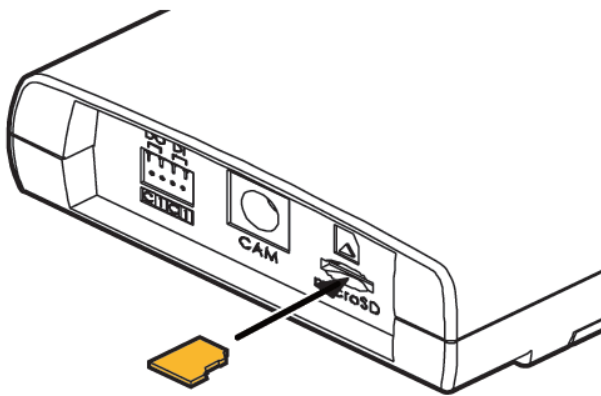
Use the diagram below to connect external devices such as alarm inputs and outputs



No	Connector	Description
1	DI/DO connections	<p>DO (Alarm) is used for external devices such as relays and LEDs.</p> <p>DI (Sensor) is used for devices such as a PIR and a door/window sensor.</p>
2	Camera connection	Connect the camera module's cable to the main unit.
3	Power	When using a non-PoE switch, connect the camera to an adequate power adapter to power the camera.
4	Network	Connect the camera to a LAN cable. See STEP 2.

MANAGING THE SD CARD

1. To install the camera's SD Card, locate the SD card slot at the front of the main unit.
2. Insert a class 10 SD card into the SD card slot by pressing the SD card into the slot until it clicks into position.
3. To remove the SD card, press the card inward to release it from the card slot.



DW® IP FINDER™

Use the DW IP Finder software to scan the network and detect all MEGApix® cameras, set the camera's network settings or access the camera's web client

Name	IP Address	Model	MAC Address	Network	Gateway	Port	DHCP	Version	Ping Test	IP Conf.	Uptime
DWV-MPT230X	192.168.150.3	DWV-MPT230X	00:07:0B:09:1D:1A	255.255.255.0	192.168.150.1	80	Disabled	1.9.04_X2_release	Ping	OK	28day 14hrs 20mins
DWV-MP4400A	192.168.150.4	DWV-MP4400A	00:0D:F1:21:03:8F	255.255.255.0	192.168.150.1	80	Disabled	A2.61.02_20180519	Ping	OK	28day 14hrs 20mins
DWV-P221889T	192.168.150.4	DWV-P221889T	00:0D:F1:21:02:21	255.255.255.0	192.168.150.1	80	Disabled	A5.61.03_20180403	Ping	OK	28day 14hrs 20mins
DWV-PV360VH	192.168.150.4	DWV-PV360VH	00:0D:F1:21:0C:AD	255.255.255.0	192.168.150.1	80	Disabled	S2.61.03_20180309	Ping	OK	28day 14hrs 20mins
DWV-PFSH1T8	192.168.150.61	DWV-PFSH1T8	00:0A:63:1A:00:14	255.255.255.0	192.168.150.1	80	Disabled	-	Ping	OK	28day 14hrs 20mins
DWV-PVPM2T8	192.168.150.62	DWV-PVPM2T8	00:0A:63:1A:00:17	255.255.255.0	192.168.150.1	80	Disabled	-	Ping	OK	28day 14hrs 20mins
DWV-MP4400A	192.168.150.63	DWV-MP4400A	00:0D:F1:20:F8:60	255.255.255.0	192.168.150.1	80	Disabled	A2.61.02_20180519	Ping	OK	28day 14hrs 20mins

Network Setup

- To install the DW IP Finder, go to: <http://www.digital-watchdog.com>
- Enter "DW IP Finder" on the search box at the top of the page.
- Go to the "Software" tab on the DW IP Finder page to download the installation file.
- Follow the installation to install the DW IP Finder. Open the DW IP Finder and click 'Scan Devices'. It will scan the selected network for all supported devices and list the results in the table. During the scan, the DW® logo will turn gray.
- When connecting to the camera for the first time, a password must be set. To set up a password for your camera:
 - a.** Check the box next to the camera in the IP Finder's search results. You can select multiple cameras.
 - b.** Click "Bulk Password Assign" on the left.
 - c.** Enter admin/admin for the current username and password. Enter a new username and password to the right. Passwords must have a minimum of 8 characters with at least 4 combinations of uppercase letters, lowercase letters, numbers and special characters. Passwords cannot contain the user ID.
 - . Click "change" to apply all changes.

Bulk Password Assignment

Current Account:

Username:

Password:

New Password:

New:

Confirm:

Hint:

Name	MAC Address	IP Address	Note
DWC-MF2Wi4T	00:0D:F1:21:66:92	192.168.10.159	

6. Select a camera from the list by double-clicking on the camera's image or click on the 'Click' button under the IP Conf. column. The pop-up window will show the camera's current network settings, allowing admin users to adjust the settings as needed.
 7. To access the camera's web page, click on the 'View Camera Website' from the IP Config window.
 8. To save changes made to the camera's setting, enter the username and password of the camera's admin account and click 'Apply'.
- Select DHCP to allow the camera to receive its IP address automatically from the DHCP server.
 - Select "Static" to manually enter the camera's IP address, (Sub)Netmask, Gateway and DNS information.
 - The camera's IP must be set to static if connecting to Spectrum® IPVMS.
 - Contact your network administrator for more information.
 - **Default TCP/IP information:** DHCP.
 - Port forwarding must be set in your network's router to access the camera from an external network

DW

Camera Settings

?

×

Camera Name

DWC-MD421TJR

MAC Address

00:0D:F1:20:A4:9E

IP Configuration Mode

☒ DHCP

☐ Static IP

IP Address

192.168.1 .101

Netmask

255.255.255.0

Gateway

192.168.1 .1

DNS

192.168.40 .1

Ports

Web Port

80

Control Port

0

Video Port

0

Audio Transmit

0

Audio Receive

0

Username

admin

Password

•••••

Restore default camera configuration

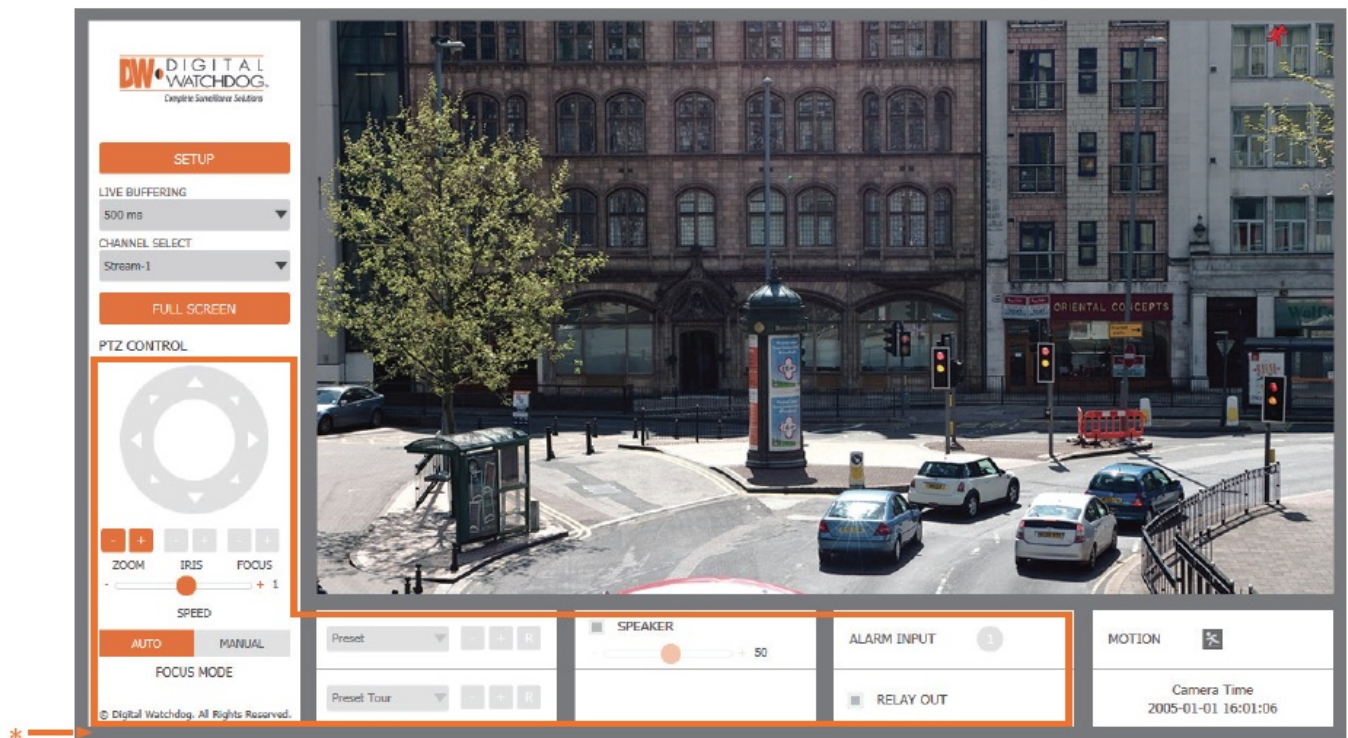
View Camera Website

Apply

Reboot

Cancel

WEB VIEWER



The GUI display may differ by camera models.

NOTE: Chrome browser is recommended for IVA configuration

Once the camera's network settings have been setup properly, you can access the camera's web viewer using the DW IP Finder.

To open the camera's web viewer

1. Find the camera using the DW IP Finder.
2. Double-click on the camera's view in the results table.
3. Press the 'View Camera Website'. The camera's web viewer will open up in your default web browser.
4. Enter the camera's username and password you setup in the DW IP Finder. If you did not setup a new username and password via the DW IP Finder, you will not be able to view video from the camera. A message will direct you to setup a new password for the camera to view video.

5. When accessing the camera for the first time, install the VLC player for web files to view video from the camera

NOTE: 32bit version of the VLC player must be installed. If you are using a 64bit system, uninstall the previous 64bit version and reinstall using the 32bit version

NOTE: Some menu options may not be available based on the camera model. See the full manual for more information

Tel: +1 (866) 446-3595 / (813) 888-9555

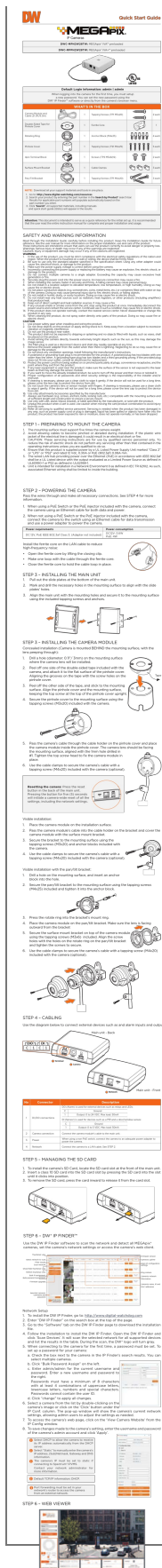
Technical Support Hours: 9:00AM – 8:00PM EST, Monday through Friday

digital-watchdog.com

Copyright © Digital Watchdog. All rights reserved. Specifications and pricing are subject to change without notice

Documents / Resources

--	--



[DIGITAL WATCHDOG DWC-MPH2W28TW Pinhole IP Camera with Fixed Lens](#) [pdf] User Guide
DWC-MPH2W28TW, DWC-MPPH2W28TW, DWC-MPH2W28TW Pinhole IP Camera with Fixed Lens, DWC-MPH2W28TW, Pinhole IP Camera with Fixed Lens, Pinhole IP Camera, IP Camera, Camera

References

- [DW Digital Watchdog I Welcome](#)
- [DW Digital Watchdog I Welcome](#)
- [DW Resources](#)