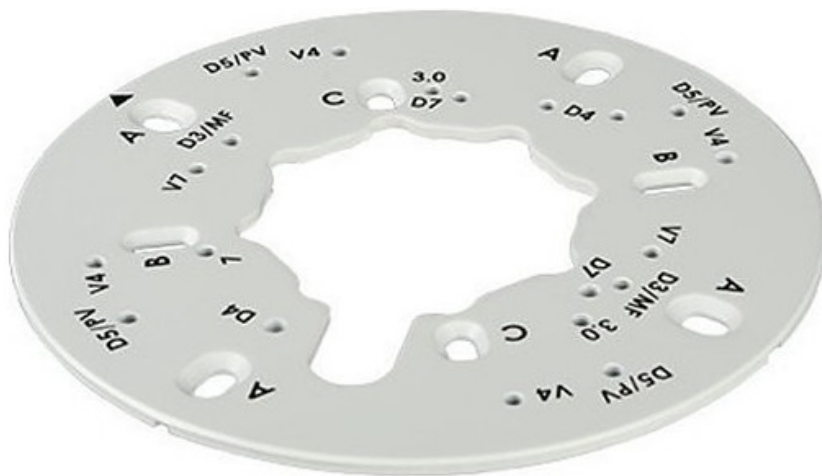


DIGITAL WATCHDOG DWC-GPLT-W Converter Plate For Electronic Gang Box User Guide

[Home](#) » [DIGITAL WATCHDOG](#) » DIGITAL WATCHDOG DWC-GPLT-W Converter Plate For Electronic Gang Box User Guide 



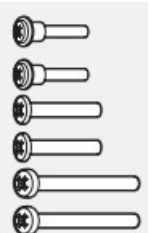


Contents

- 1 DWC-GPLT-W Converter Plate For Electronic Gang Box
- 2 INSTALLATION
- 3 Documents / Resources
 - 3.1 References

DWC-GPLT-W Converter Plate For Electronic Gang Box

WHAT'S IN THE BOX

Option A Installation Screws		4
Option B Installation Screws		2
Camera Mounting Screws		3 sets

NOTE: Download all your support materials and tools in one place.

1. Go to: <http://www.digital-watchdog.com/resources>
2. Search your product by entering the part number in the 'Search by Product' search bar. Results for applicable part numbers will populate automatically based on the part number you enter.
3. Click 'Search'. All supported materials, including manuals and quick start guide (QSGs) will appear in the results.

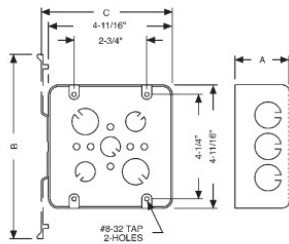


http://bit.ly/resources_qr

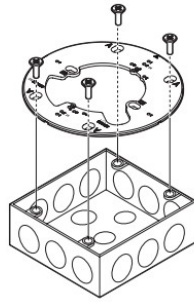
INSTALLATION

1. Connect the converter plate to an electric gang box.
 - ☒ Use the 4 screws (A) included with the converter plate when using a 2-gang handy electrical box or switch box.
 - ☒ Use the 2 screws (B) included with the converter plate when using a 1-gang handy electrical box.

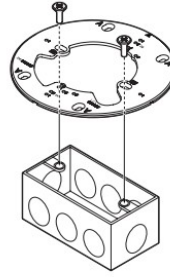
A. 2-Gang handy Boxes / switch boxes



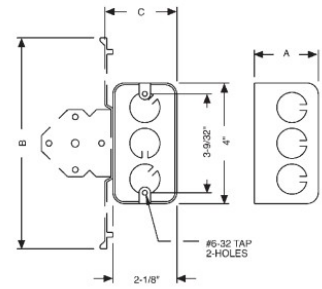
A. 2-gang handy electrical box and switch boxes



B. 1-gang handy electrical box



B. handy boxes



2. Pass wires through and make the connections.

☒ Use the CABLE-OUT spaces in the converter plate.

3. Follow the table below to connect the camera to the appropriate mounting points and which screws set to use.

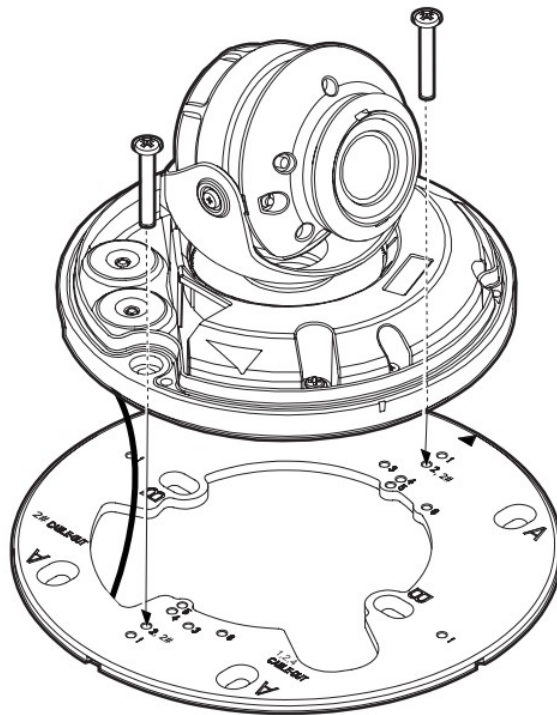
Mounting holes	Compatible cameras	Screw size
Mounting point 1	DWC-V4 models 120mm screws	20mm screws
	DWC-MV4 models 120mm screw	20mm screw
	DWC-V6 models 20mm screw	20mm screw
Mounting point 2, 2#	DWC-MF and DWC-MPF models 120mm screw	20mm screw
	DWC-MV8 and DWC-MPVB models	23mm screw
	DWC-MVC and DWC-MPVC models	20mm screw
	DWC-MVD and DWC-MPVD models	35mm screws
	DWC-PVF and DWC-PPVF models	20mm screw
Mounting point 4	DWC-MV7 and DWC-MPV7 models	20mm screw
	DWC-V7 models	20mm screw
	DWC-MVA and DWC-MPVA models	20mm screw
	DWC-VA models	20mm screw
	DWC-D4 models	20mm screw
	DWC-MF and DWC-MPF models OLD HARDWARE	20mm screw + rubber gasket I
	DWC-MV8 and DWC-MPVB models OLD HARDWARE	20mm screw + rubber gasket
	DWC-PVF and DWC-PPVF models OLD HARDWARE	20mm screw + rubber casket
Mounting Point 5	DWC-D3 models	20mm screw
	DWC-MD7 models	20mm screw
Mounting point 6	DWC-MD4 models	20mm screw

4. Mount the camera to the upper side of the converter plate.

* **NOTE:** How to tell what MF, V8 or PVF hardware you have:

If the camera's mounting holes are located on the outer edge of the camera's base, use mounting points labeled as "2, #2" WITHOUT the included rubber gaskets.

If the camera's mounting holes are located on the inner edge of the camera's base, use mounting points labeled as "4" WITH the included rubber gaskets.

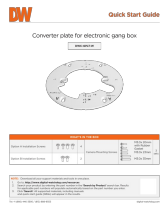


Rev:06/23

Copyright © Digital Watchdog.
All rights reserved.

Specifications and pricing are
subject to change without notice.

Documents / Resources

	<p>DIGITAL WATCHDOG DWC-GPLT-W Converter Plate For Electronic Gang Box [pdf] User Guide</p> <p>DWC-GPLT-W, DWC-GPLT-W Converter Plate For Electronic Gang Box, Converter Plate For Electronic Gang Box, Plate For Electronic Gang Box, Electronic Gang Box, Gang Box, Box</p>
---	---

References

- [User Manual](#)

Manuals+. Privacy Policy

This website is an independent publication and is neither affiliated with nor endorsed by any of the trademark owners. The "Bluetooth®" word mark and logos are registered trademarks owned by Bluetooth SIG, Inc. The "Wi-Fi®" word mark and logos are registered trademarks owned by the Wi-Fi Alliance. Any use of these marks on this website does not imply any affiliation with or endorsement.