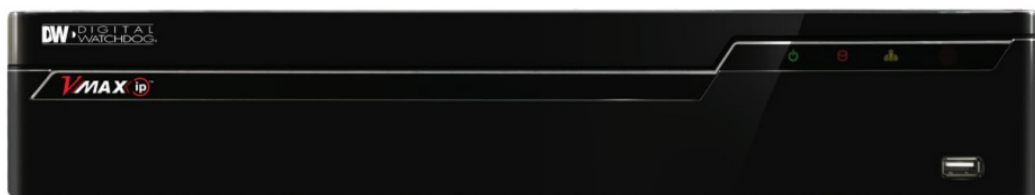




# DIGITAL WATCHDOG DW-VIP81T VMAX IP 8-Channel Network Video Recorders User Guide

[Home](#) » [DIGITAL WATCHDOG](#) » DIGITAL WATCHDOG DW-VIP81T VMAX IP 8-Channel Network Video Recorders User Guide 



**Username:** admin  
**Password:** no password

## Contents

- 1 DW-VIP81T VMAX IP 8-Channel Network Video Recorders
- 2 WHAT'S IN THE BOX
- 3 Step 1 – CONNECTING THE NVR
- 4 Step 2 – POWERING UP THE NVR
- 5 SAFETY TIPS
- 6 Step 3 – STARTUP WIZARD
- 7 Step 4 – MONITOR YOUR SYSTEM
- 8 Step 5 – REMOTE MONITORING
- 9 Documents / Resources
- 9.1 References

## DW-VIP81T VMAX IP 8-Channel Network Video Recorders

8 Channel Models	16 Channel Models
DW-VIP81T	DW-VIP161T
DW-VIP82T	DW-VIP162T
DW-VIP83T	DW-VIP163T
DW-VIP84T	DW-VIP164T
DW-VIP86T	DW-VIP166T
DW-VIP88T	DW-VIP168T
DW-VIP812T	DW-VIP1612T

## WHAT'S IN THE BOX

CD (QSG + Manual + Software) & Quick Start Guide		1 Set	12V/5A D/C Adaptor & Power Cable		1 Set
Rubber Mount		1 Set	48V/2.5A PoE Adaptor & Power Cable		1 Set
USB Mouse		1 Set	IR Remote Control		1 Set

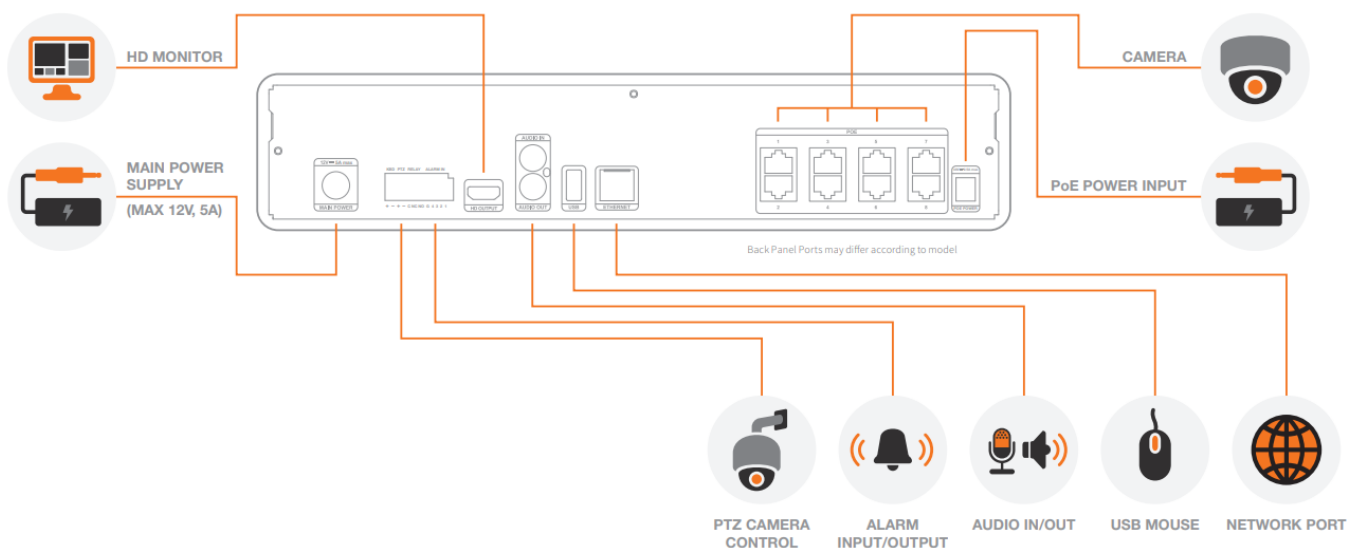
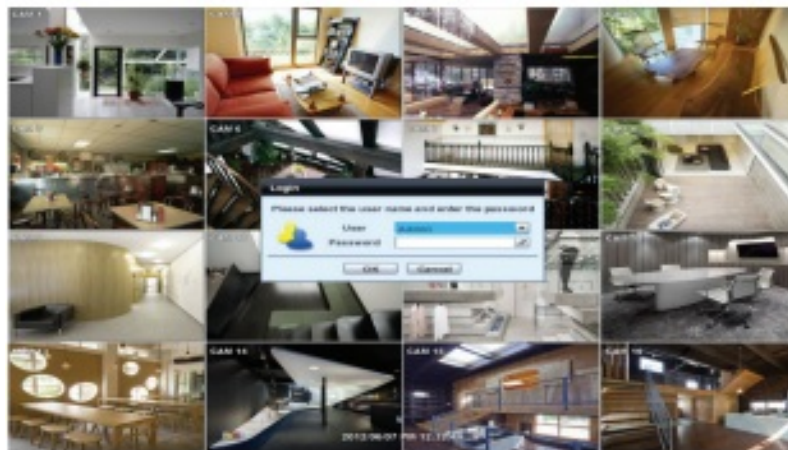
**Attention:** This document is intended to serve as a quick reference page for initial set-up. It is recommended that the user read the entire instruction manual for complete and proper NVR usage.

## Step 1 – CONNECTING THE NVR

1. Mount and install all necessary cameras and external devices. Refer to their individual manuals for additional information.
2. Place the NVR in its final position. See installation tips below.
3. Connect all necessary cables to the NVR
4. Once all additional devices have been properly connected to the NVR, connect the NVR to an appropriate power supply. The NVR will boot up automatically.

## Step 2 – POWERING UP THE NVR

1. When the NVR boots up, it will be in protective mode.  
This means you will not be able to access the NVR's setup menu until you enter the proper username and password.
2. To unlock the NVR, right-click anywhere on the screen.  
The login screen will appear. (Default Username / Password: admin / no password)
3. When the NVR boots up for the first time, you will be guided through the Startup Wizard.



## SAFETY TIPS

1. Make sure the cameras and the monitors are properly connected to the NVR.
2. The NVR should be placed in a dust and moisture free environment. It must never be directly exposed to sunlight. Server room temperature is highly recommended to reduce the chance of overheating, which may cause the NVR to become unstable.
3. During the boot up process, the NVR should not be interrupted by pressing any buttons on the mouse.  
Do not unplug the power adapter or turn the NVR off during the boot up process.
4. A UPS (Uninterrupted Power Supply) is highly recommended to prevent damage to the NVR during a power outage.
5. Local PoE Ports can support up to 15W and up to 2.1 Megapixel resolution cameras.

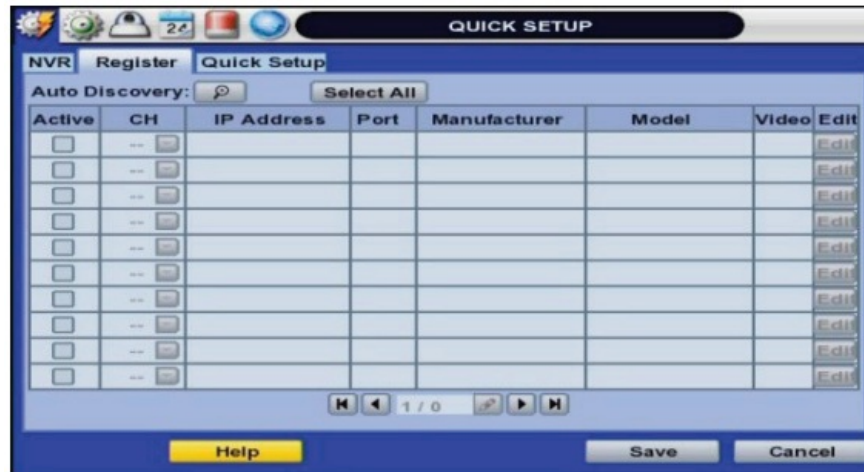
### Step 3 – STARTUP WIZARD

1. Follow the startup wizard's instructions to setup the NVR's basic settings, including network settings, camera detection and registration and quick recording setup. At any time you can exit the wizard and setup the NVR manually.
2. Set the NVR's network settings to match your network's requirements. It is recommended to set the network type to DHCP and let the NVR autodetect the network's settings, then change the type to Static.

Please contact your Network Administrator for additional information.



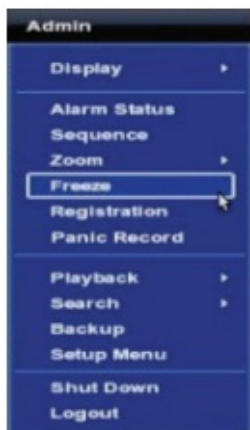
3. The VMAX IP's Camera Registration screen allows you to detect and register all the supported cameras in your network and add them to the NVR. The VMAX IP is engineered to work with Digital Watchdog's MEGApix IP cameras. To find and register your cameras:
  - a. The NVR will automatically scan the network for all supported cameras and display the results in the table.
  - b. Cameras connected directly to the NVR's PoE switch will appear at the top of the table.
  - c. Once the NVR completes the network search, select which cameras to register by checking the 'Activate' box next to them.
  - d. Select which NVR channel to assign to each camera by selecting the appropriate number in the drop-down menu options.
  - e. Click 'Save' to save your cameras



4. The Quick Setup menu option allows you to easily setup all your cameras' recording resolution, frame rate, mode and recording periods. To use the Quick Setup option, check the box 'Use Quick Setup' to enable. There are two configuration options:
  - a. Input Desired Days – Enter the number of days you wish to record before the local storage gets full or overrides itself. The recording parameters under Recording settings will adjust automatically to allow for your desired number of recording days.
  - b. Record Settings – Manually enter the resolution, frame rate, recording mode and quality from the drop-down options. The system will instantly update the 'Days to Record' section, showing how many estimated recording days will result from the settings set above. These recording settings will apply to all cameras registered with the NVR. To manually setup different recordings for each camera or recording schedule, disable the Quick Setup menu and go to RECORD.

## Step 4 – MONITOR YOUR SYSTEM

1. NAVIGATION – use the included USB mouse to navigate around the NVR's monitoring and Setup pages.
  - a. To access the MENU BAR – move the mouse's cursor to the bottom of the display area to show the menu bar.
  - b. To access the QUICK MENU OPTIONS Right-click anywhere on the screen. This will take you to the quick menu options, which include:
    - Display Mode Options
    - Alarm Status
    - Start / Stop Sequence View
    - Freeze / Unfreeze Live Image
    - Access the Camera Registration Page
    - Start / Stop Panic Recording
    - Playback and Search Options
    - Access the Backup Menu Page
    - Access the Main Menu Page
    - Shut Down the System
    - Log off Current User



2. HELP – For your convenience, the HELP button located at the bottom right of setup screens includes basic information and explanation of the features and settings in that page, for on-the-go information.

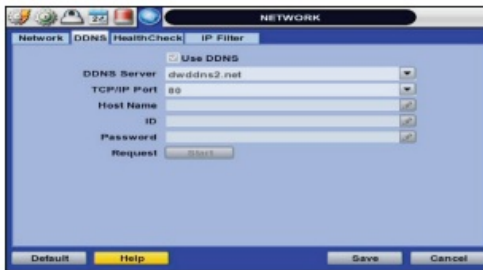
## Step 5 – REMOTE MONITORING

### DDNS Setup

The DDNS address provides your NVR a URL address, easier to remember than an IP address. This is a free feature supported by Digital Watchdog for its customers.

1. Go to the Network setup menu, and select the 'DDNS' tab.
2. Check USE DDNS to enable. (Make sure the NVR's web port has been properly setup in your router).
3. Select dwddns2.net (default).
4. Enter a name for your NVR and click the CHECK button. If the name is available, the system will display the following message: "THIS NVR NAME CAN BE USED". Click SAVE to save all changes.
5. To use your DDNS, open an Internet Explorer page and enter the DDNS in the address bar:  
NVRname.dwddns2.net:port-number. (Example: <http://vmaxip.dwddns2.net:80>)





Tel: 866-446-3595 / 813-888-9555

[digital-watchdog.com](http://digital-watchdog.com)

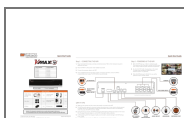
Technical Support Hours:

9:00AM – 8:00PM EST, Monday thru Friday

Rev Date: 4/15

© 2015 Digital Watchdog. All rights reserved.

## Documents / Resources



[DIGITAL WATCHDOG DW-VIP81T VMAX IP 8-Channel Network Video Recorders](#) [pdf] User Guide

DW-VIP81T VMAX IP 8-Channel Network Video Recorders, DW-VIP81T VMAX IP, 8-Channel Network Video Recorders, Network Video Recorders, Video Recorders

## References

- [DW Digital Watchdog I Welcome](#)
- [Welcome To DDNS](#)
- [MH Search - Manual-Hub.com](#)