

DIGITALVIEW®
DIGITAL VIEW
SP6-133
Controller
Board



DIGITAL VIEW SP6-133 Controller Board User Guide

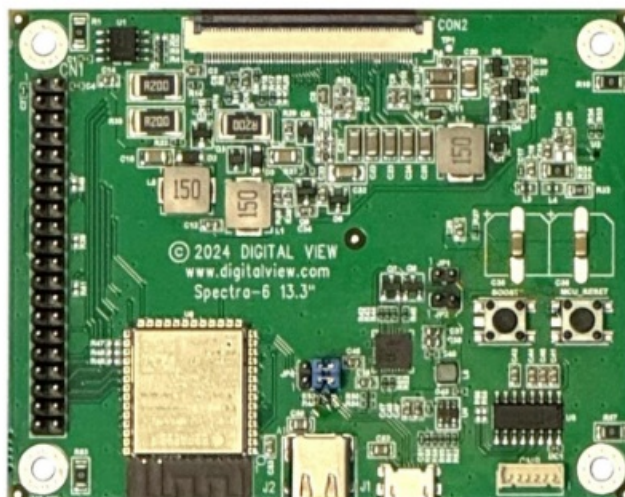
[Home](#) » [DIGITAL VIEW](#) » DIGITAL VIEW SP6-133 Controller Board User Guide 

Contents

- [1 DIGITAL VIEW SP6-133 Controller Board](#)
- [2 Specifications](#)
- [3 Function Description](#)
- [4 Connection method](#)
- [5 Render_Image Tool](#)
- [6 Writing image to SP6-133 board](#)
- [7 Frequently Asked Questions](#)
- [8 Documents / Resources](#)
 - [8.1 References](#)
- [9 Related Posts](#)



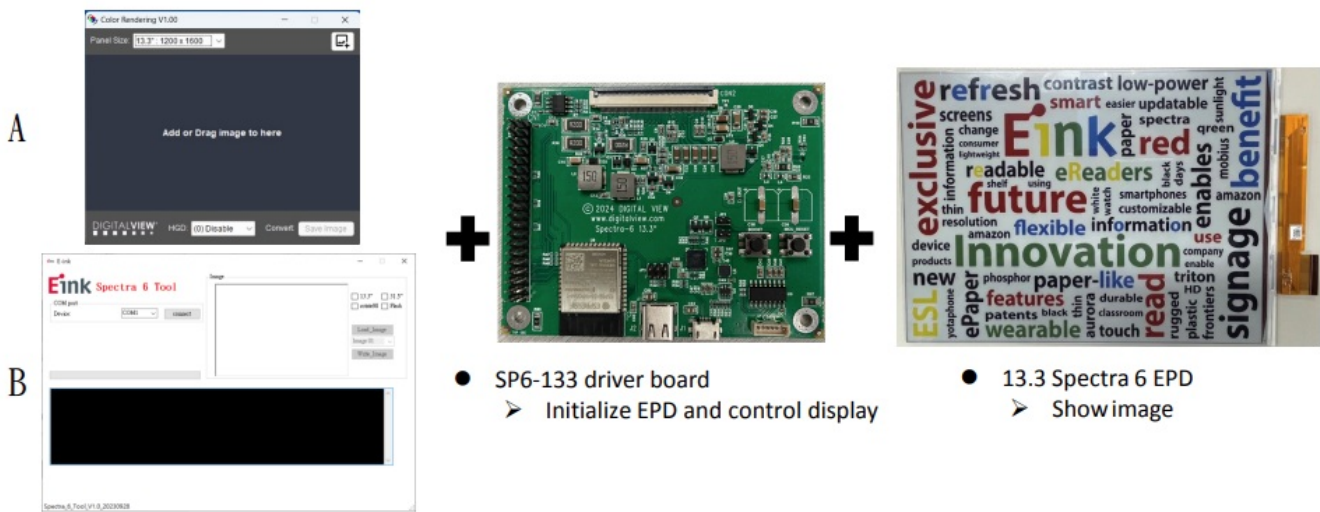
DIGITAL VIEW SP6-133 Controller Board



Specifications

- Model: SP6-133 with E Ink Spectra 6 13.3, EL133UF1
- Display: 13.3" Spectra 6 EPD
- Connection: +5VDC input via USB-C cable connected to the Computer

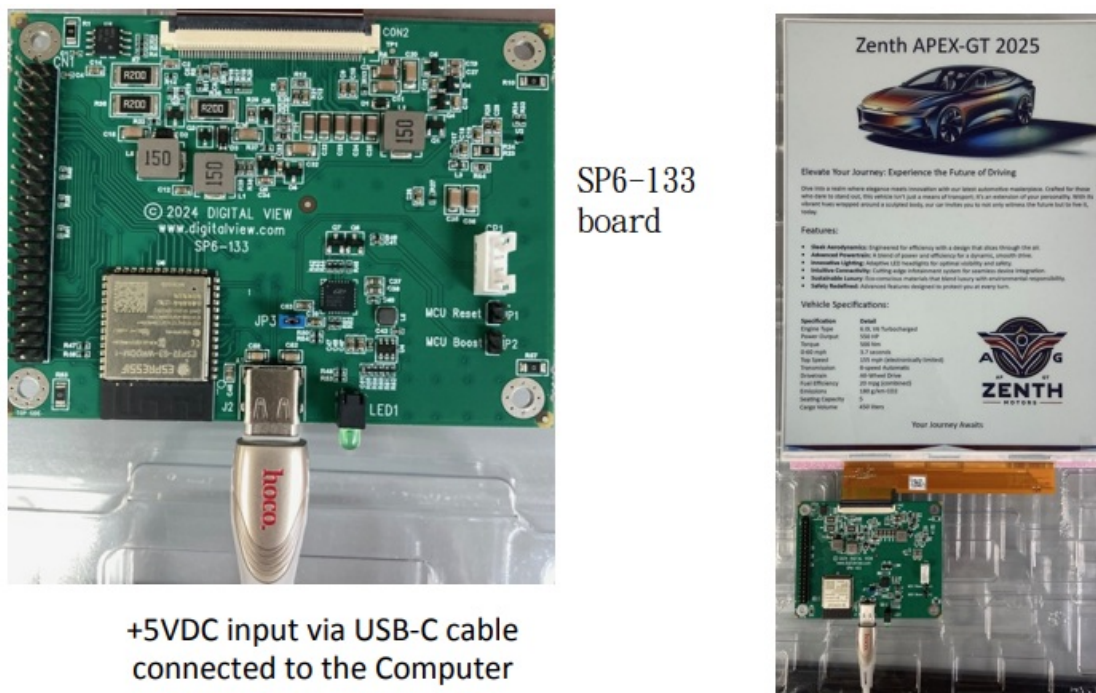
Function Description



Rendering tool and writing image tool

- A. Color Rendering program
- B. Write converted image file to SP6-133 board

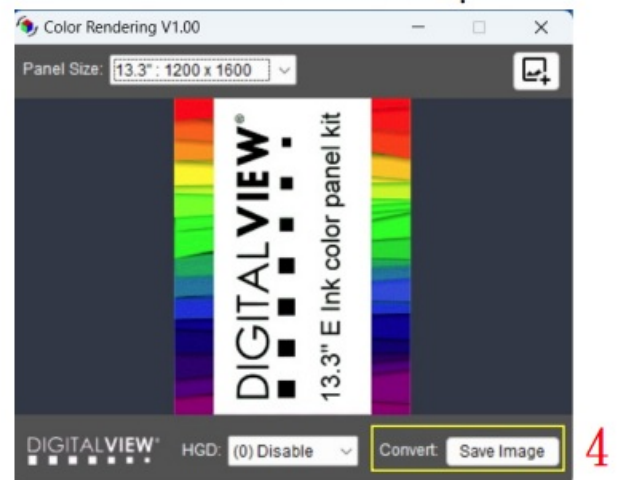
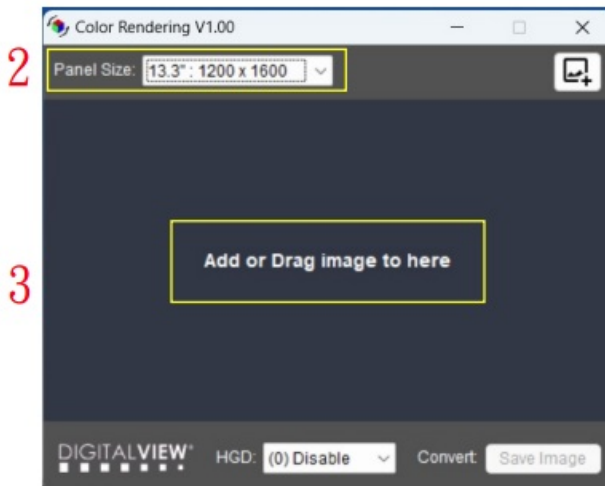
Connection method



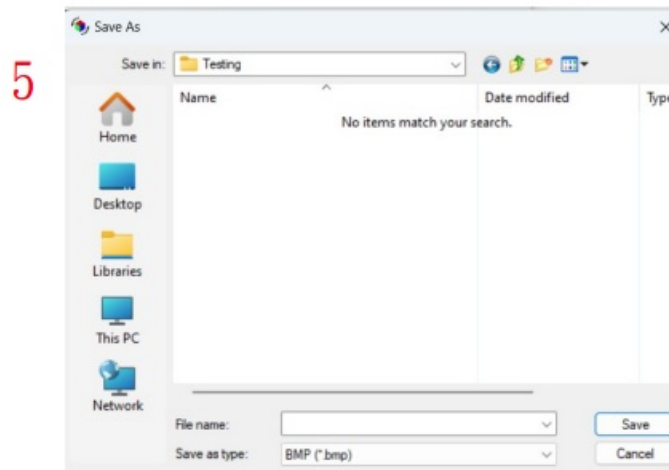
Render_Image Tool

1. Execute the Color Rendering V1.00 program.

2. Choose Panel Size : 13.3 : 1200×1600.
3. Add or Drag image to the program.
4. Choose Convert:Save Image



5. Save Rendered image to the folder.



Writing image to SP6-133 board

1. First connect the SP6-133 board to the EPD via USB and turn on the power
2. Execute Spectra 6_Image_Tool.exe
3. Click "connect".
 - If the connection is successful, there will be a WF00KWR message on the Device.
 - If there is no message on the Device, please go to the Device Manager to confirm the COM port number.
4. Click 13.3 and Flash.



+5VDC input via USB-C (connect to computer)

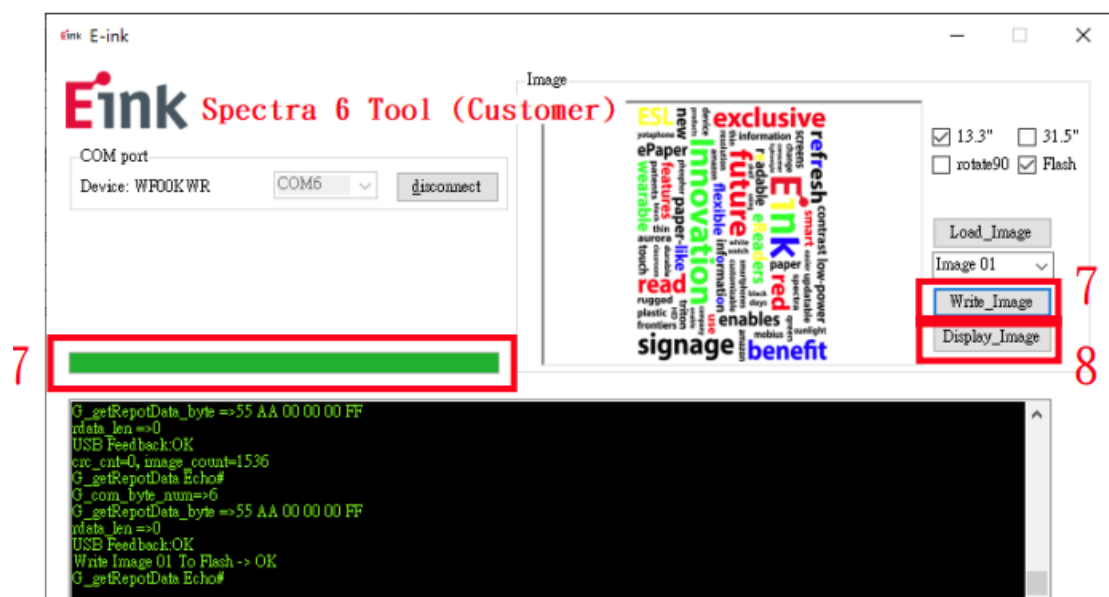


5. LoadImage(resolution: 1200×1600)
6. Select the Image storage location (13.3 can store Image 01~05)



7. Click “Write_Image”to write the Image file to the SP6-133 board and wait for the Process Barto complete.

8. After the writing is completed, click “Display_Image”,and the EPD will display the Image xx location image.



www.digitalview.com

Frequently Asked Questions

Q: How do I know if the writing process is completed?

A: You can monitor the progress through the Process Bar. Once it reaches completion, the writing process is finished.

Q: Can I use a different cable for connection?

A: It is recommended to use the provided USB-C cable for connection to ensure compatibility and proper power delivery.

Documents / Resources



[DIGITAL VIEW SP6-133 Controller Board](#) [pdf] User Guide
SP6-133, EL133UF1, SP6-133 Controller Board, SP6-133, Controller Board, Board

References

- [User Manual](#)

Manuals+. [Privacy Policy](#)

This website is an independent publication and is neither affiliated with nor endorsed by any of the trademark owners. The "Bluetooth®" word mark and logos are registered trademarks owned by Bluetooth SIG, Inc. The "Wi-Fi®" word mark and logos are registered trademarks owned by the Wi-Fi Alliance. Any use of these marks on this website does not imply any affiliation with or endorsement.