



Digital Ant B08LPFK5DG Smart Camera User Manual

[Home](#) » [Digital Ant](#) » Digital Ant B08LPFK5DG Smart Camera User Manual 

Contents

- 1 Digital Ant B08LPFK5DG Smart Camera User Manual
 - 1.1 1. Download the app
 - 1.2 2. Register and login
 - 1.3 3. How to connect camera to WiFi
 - 1.3.1 3.1 AP Configuration (recommended)
 - 1.3.2 3.2 Smart Configuration
 - 1.3.3 3.3 AP Direct Connection
 - 1.3.4 3.4 Add a 4G camera
 - 1.4 4. Function Introduction
 - 1.4.1 4.1 Introduction to the device list function
 - 1.4.2 4.2 Introduction to the player interface
 - 1.4.3 4.3 Cloud services
 - 1.4.4 4.4 View cloud video
 - 1.4.5 4.5 Introduction to Cloud Video Page
 - 1.5 5 HRS for PC Installation Instructions
 - 1.5.1 5.1 Installation
 - 1.5.2 5.2 Instructions
- 2 Documents / Resources
 - 2.1 References
- 3 Related Posts



1. Download the app

A) Method 1: Scan the QR code and download the *Hopeway* app.



B) Method 2:

Android:

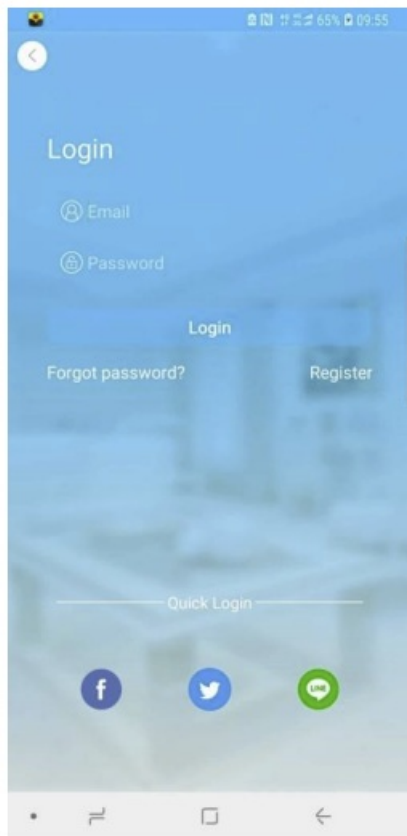
Search "Hopeway" and download from Google Play.

iPhone:

Search "Hopeway" and download from App Store.

2. Register and login

Use email to register your account or "Quick Login" by using third-party account.

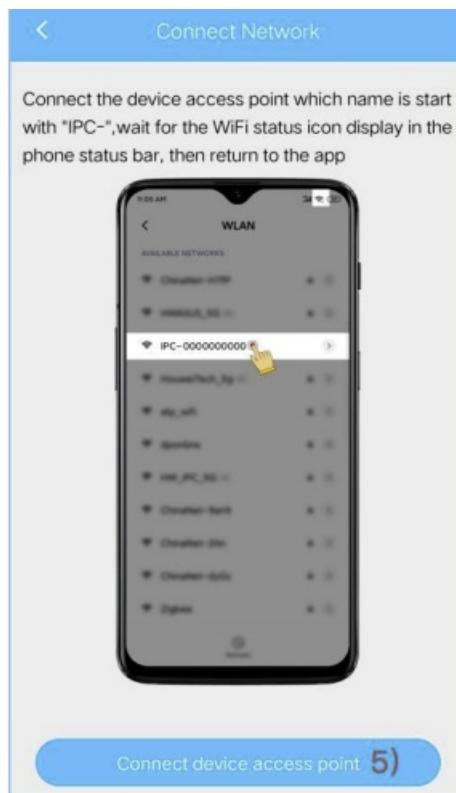
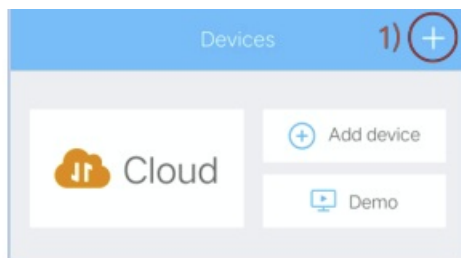


3. How to connect camera to WiFi

Note: This Camera only supports 2.4G WiFi.

3.1 AP Configuration (recommended)

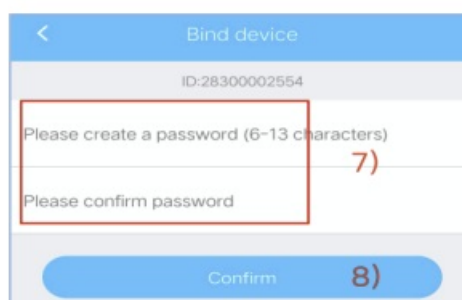
- A) Power on the camera and wait for the prompt tone "Access point has been established."
- B) If the device prompts "Please configure WiFi", press and hold the "reset" button for 1 second to switch the device to "AP mode".
- C) Run the app and follow the steps to configure the network.



D) Following step 5, click the “Connect device access point” button to jump to the WiFi settings of your phone, and then select the WiFi in “IPC-*****” format .

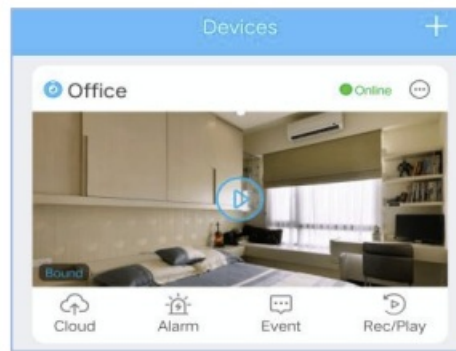
E) Return to the APP, the camera will connect the network automatically as step 6 shows.

F) When the camera is successfully connected to the network, set the password of the camera and click the “Confirm” button.



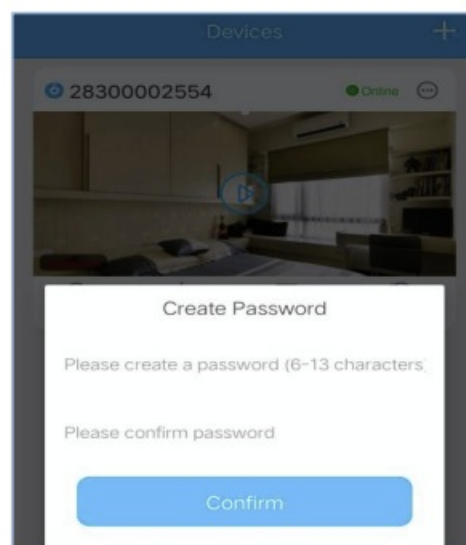
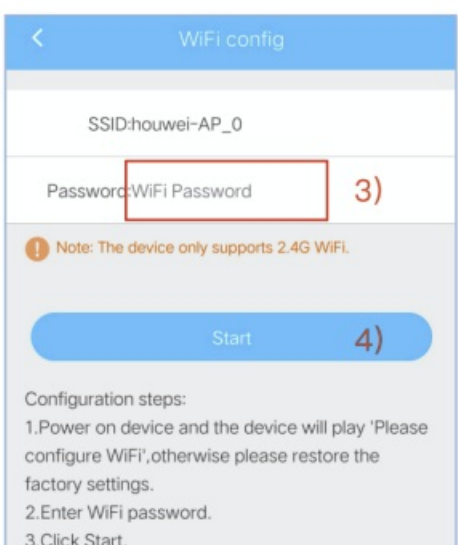
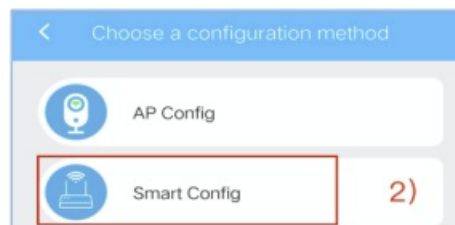
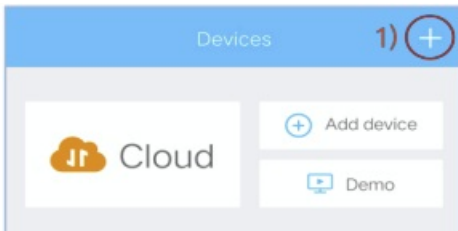
G) Set the camera name and click the “Confirm” button.

H) Configuration succeeded. Click the play button to watch the video.



3.2 Smart Configuration

- A) Power on the camera and wait for the camera prompts "Please configure WiFi".
- B) If the device prompts "Please configure WiFi", press and hold the "reset" button for 1 second to switch the device to "Smart Configuration mode".
- C) Run the app and follow the steps to configure the network.
- D) After completing the steps 1-4, the device will automatically connect to the network and return to the device list interface. Then click the play button to watch the video. Notice: the device password needs to be created for the first time.

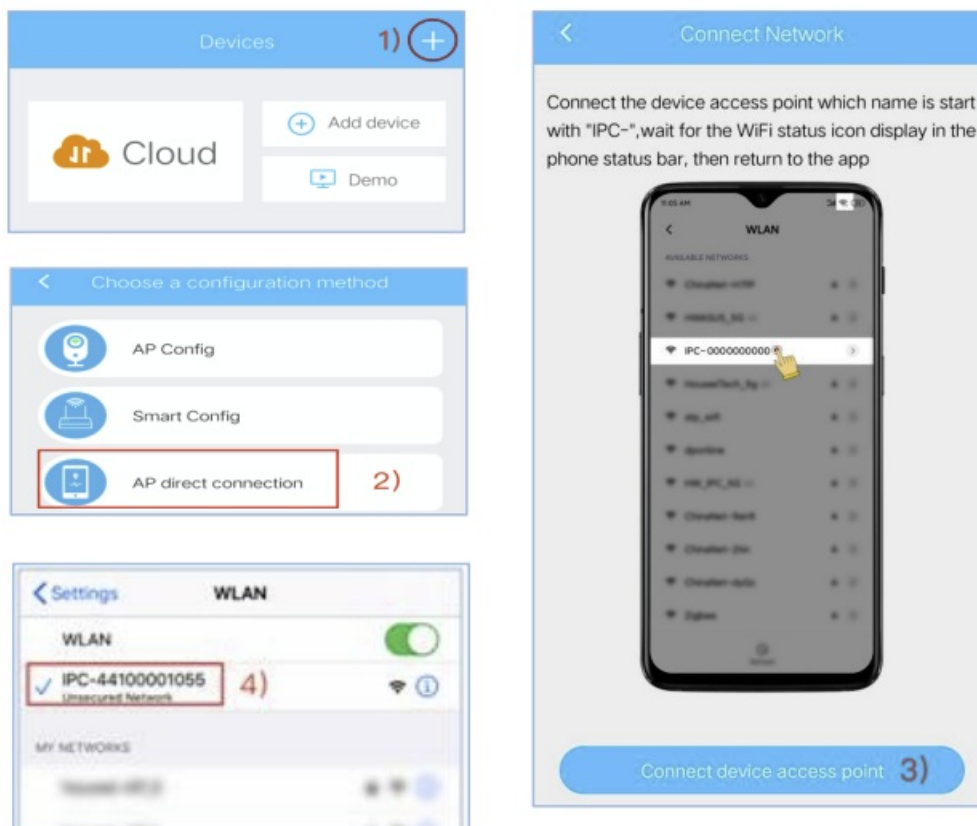


3.3 AP Direct Connection

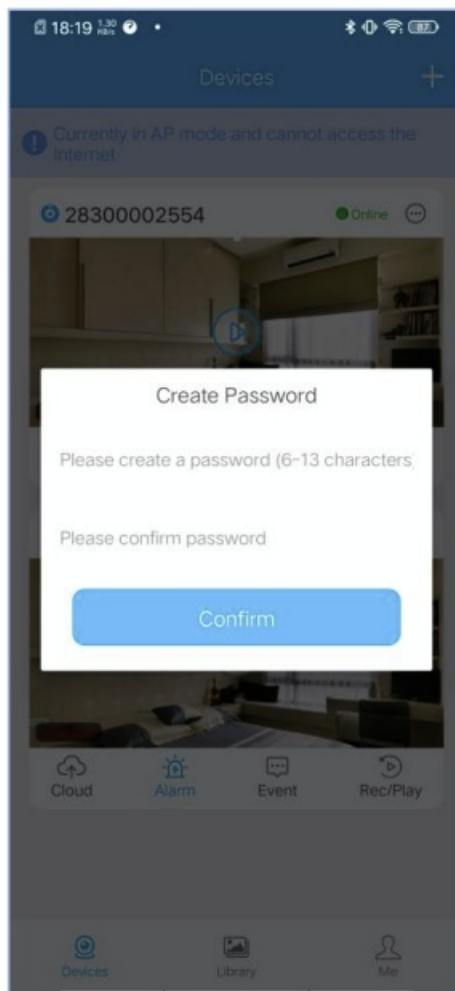
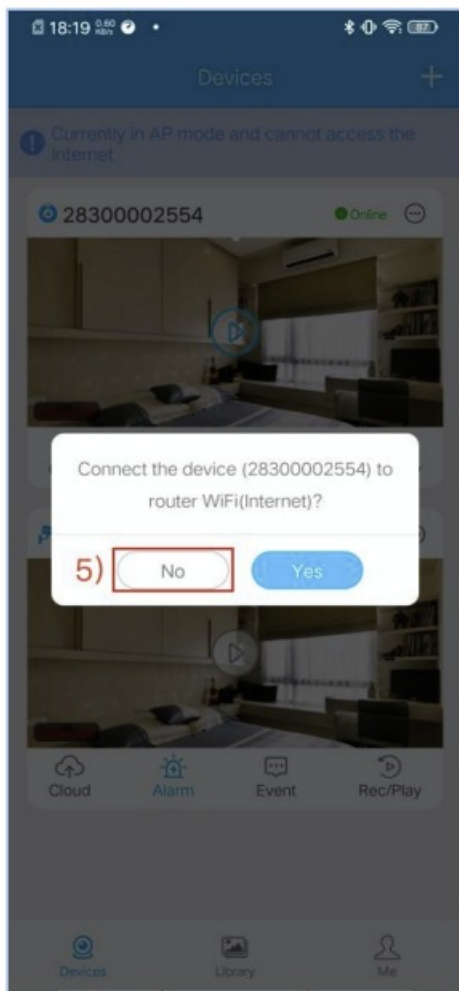
- A) Power on the camera and wait for the camera prompts "Please configure WiFi".

B) If the device prompts “Please configure WiFi”, press and hold the “reset” button for 1 second to switch the device to “AP direct connection”.

C) Run the app and follow the steps to configure the network.

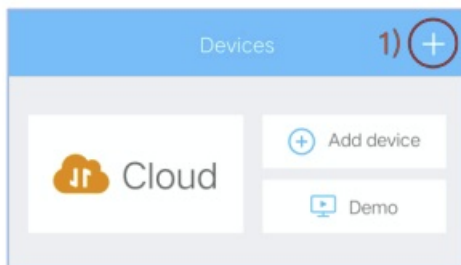


D) After connecting the WiFi in “IPC-*****” format and returning to the APP, the camera will be automatically added to the device list. If the app prompts “Connect the device to the router WiFi (Internet) ?” as shown in step 5, click the [No] button and create your password in the pop-up window, then click play button to watch the video.



3.4 Add a 4G camera

- A) Insert the SIM card into the camera (if the device has a built-in SIM card, please ignore this step).
- B) Power on the camera and wait for it prompts "Successful connection, welcome."
- C) Run the app and follow the steps to connect the "4G device".
- D) After completing the above steps 1-6, the app will automatically return to the device list interface. Click play to watch the video.



4. Function Introduction

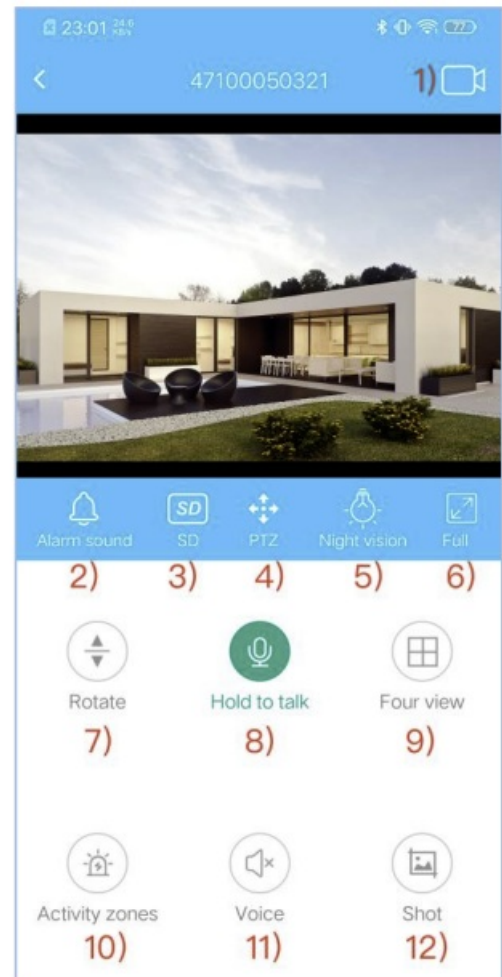
4.1 Introduction to the device list function

1. Camera status
2. More settings
3. Device settings
4. Sharing equipment
5. Unbind/delete device
6. Cloud storage
7. Quick alarm
8. View the alarm message
9. View video playback



4.2 Introduction to the player interface

1. Record and save video
2. Alarm sound switch
3. Video resolution
4. Control direction (if cameras support)
5. Lighting mode (if cameras support)
6. Full screen playback
7. Set the camera to flip vertically
8. Intercom switch
9. 4-screen and single-screen switching
10. Set the monitored and alarmed area
11. Voice on-off 12) Screenshot



4.3 Cloud services

A) What is cloud storage?

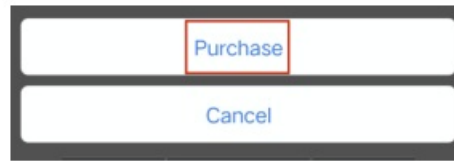
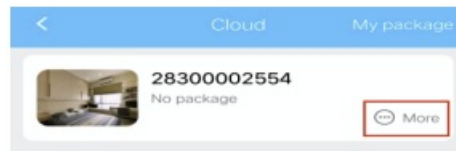
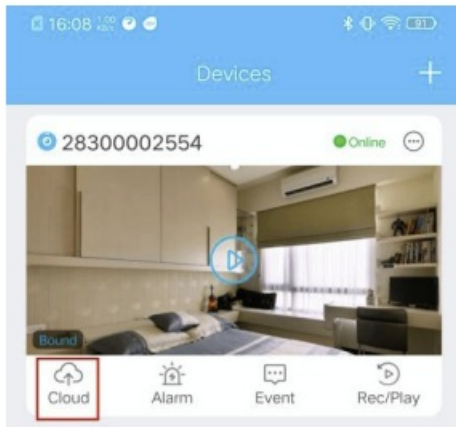
Cloud storage is a safe and reliable cloud video storage service for smart camera users.

B) Why buy cloud storage?

- a) It is for data backups and security. Cloud recording will prevent data including video from losing due to damage to the memory card. Thus, there is no need to worry about the leakage of private data due to the memory card being stolen.
- b) Even if the camera is stolen or damaged, the previous video will remain in the cloud within the validity period of the cloud video. The owner can watch and download it anytime and anywhere. This is a vital safeguard for video evidence.

C) Steps to purchase cloud storage

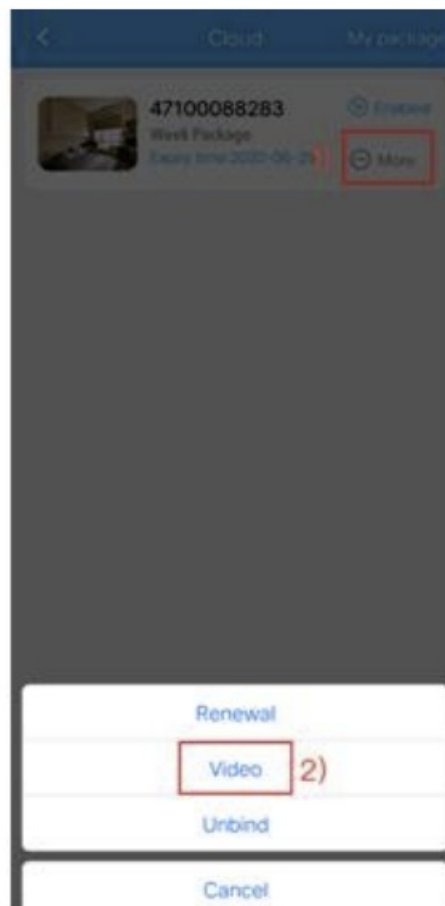
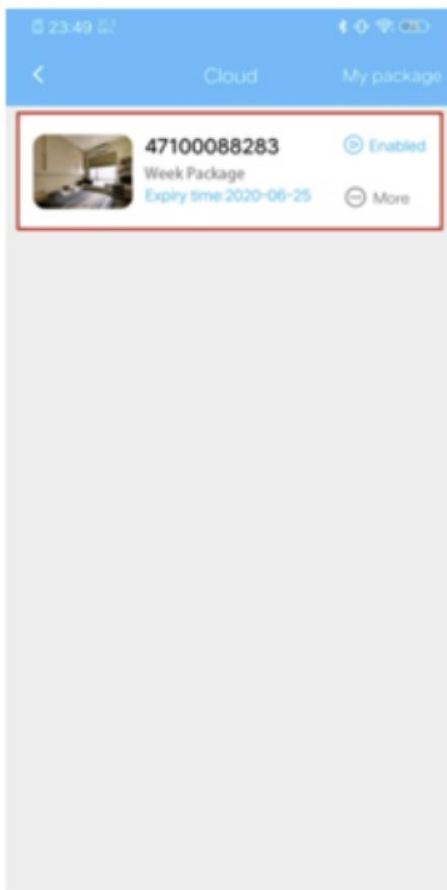
- a) Click the "Cloud" button in the device list to enter the cloud storage interface.
- b) After entering the cloud interface, click "More" and "Purchase" to enter the purchase page to order the cloud package.



4.4 View cloud video

A) After purchasing a cloud storage package, go back to the cloud page to watch information about the cloud storage package.

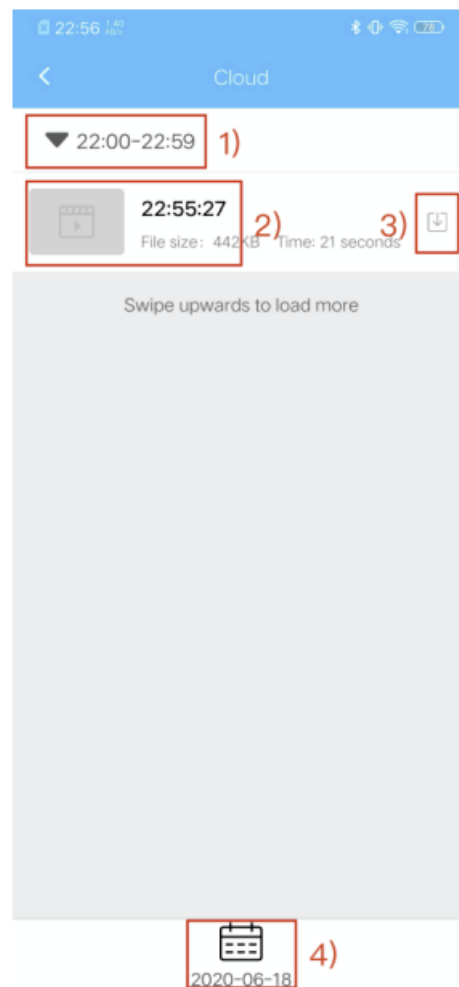
B) Click “More” and “Video” to enter the cloud video interface to watch cloud video.



4.5 Introduction to Cloud Video Page

1. The video files are grouped by time. Click the corresponding period to show or hide the video files.
2. Click the video file to play it.
3. Video download button.
4. Click to watch video history files.

Tip: If you need more instruction, please refer to the “help” page in the app.



5 HRS for PC Installation Instructions

5.1 Installation

A) Notice: Only supports Windows 7 and Windows 10 currently

B) Please download the HRS installation package from the following link

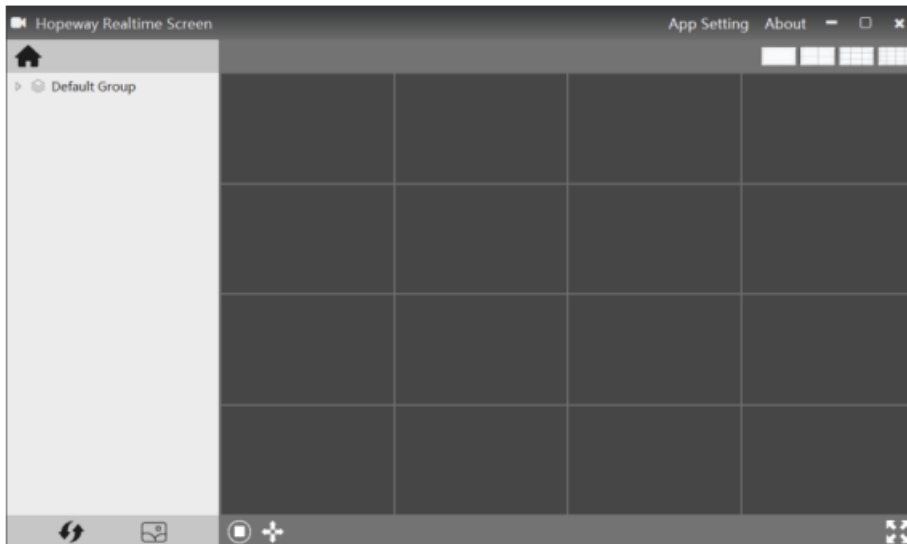
www.digitalant.online/html/HRS_1.1.1_installation.rar . Then unzip it and install these two files separately.



5.2 Instructions

A) Notice: Make sure your camera and computer are in the same network environment (the same WiFi or router).

B) Running the HRS for PC: When the installation is finished and the HRS icon appears, you can double click it to run the HRS.



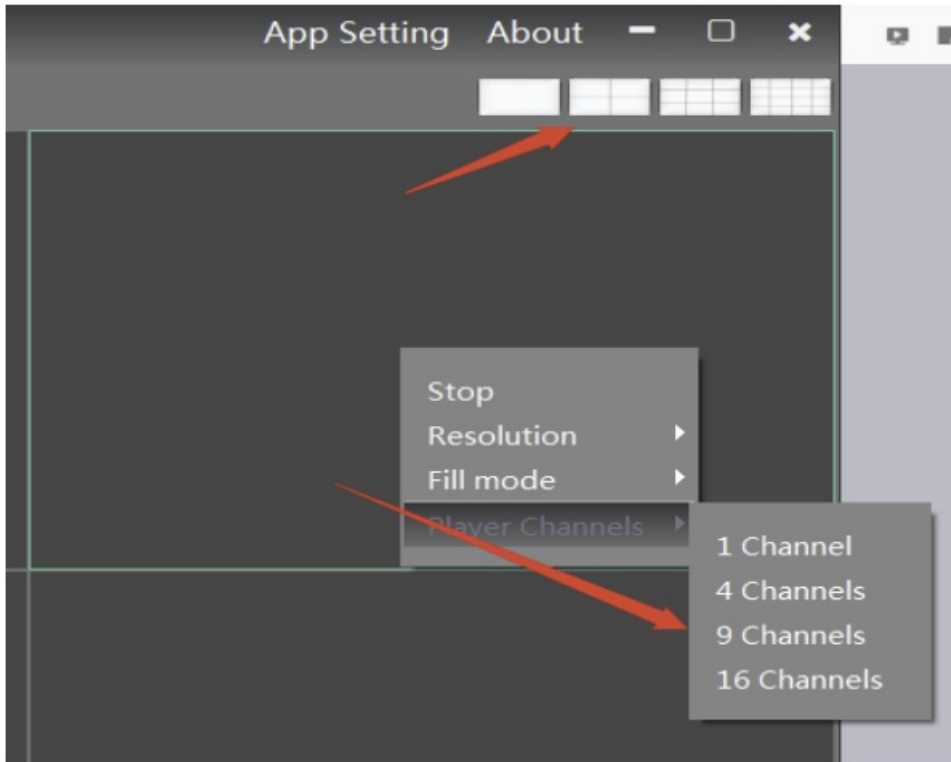
C) Pairing the camera with HRS: Generally, HRS will automatically search the cameras on the same LAN, and then the cameras will be displayed on the default group. If it doesn't appear, please click the [Find Device] button



in the lower left to search.

D) Watching live videos: Double click the camera name and enter the camera's password to watch the live videos.

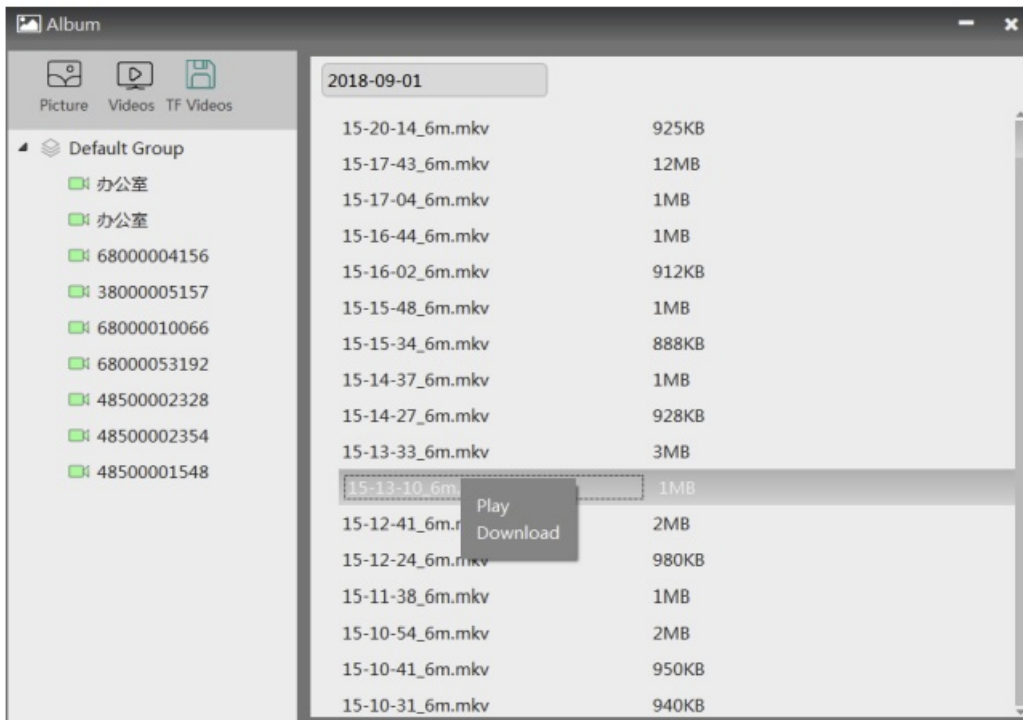
E) Switching Channels: Click the split screen button at the top-right or select it from the pop-up menu in the playback window, as shown below.



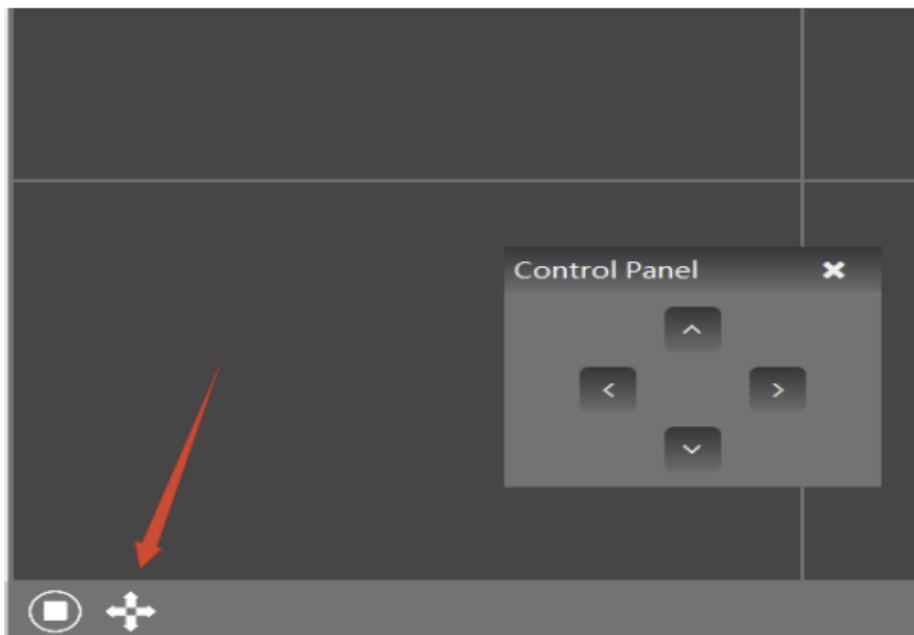
F) Sound, Record and Screenshots: While the video is playing, you can click the play window to show the control bar, and then set the sound, record and shot screens.

G) Watching screenshots, local video record or video in TF card: Click the album icon  in the lower



left of the main interface to open it and check the records you want, as follows. You can play or download them as well.



H) Controlling the direction of camera : Select the camera which is playing and click the“PTZ” button at the bottom of the main interface to control the direction of camera.



Documents / Resources

<div>Digital Ant Smart Camera User Manual</div> <div></div> <div></div>	<div>Digital Ant B08LPFK5DG Smart Camera [pdf] User Manual</div> <div>B08LPFK5DG, Smart Camera</div>
---	--

References

- digitalant.online/html/HRS_1.1.1_installation.rar