



Digital Alert Systems R190A  
Dishwasher Lan Hub  
Controller



# Digital Alert Systems R190A Dishwasher Lan Hub Controller Instruction Manual

[Home](#) » [Digital Alert Systems](#) » Digital Alert Systems R190A Dishwasher Lan Hub Controller Instruction Manual



## Contents

- [1 Digital Alert Systems R190A Dishwasher Lan Hub Controller](#)
- [2 Product Usage Instructions](#)
- [3 Warranty](#)
- [4 Specifications](#)
- [5 EAS Overview](#)
- [6 EAS Getting Started](#)
- [7 Operation](#)
- [8 Typical R190A Wiring Diagram](#)
- [9 Remote Control Overview](#)
- [10 Remote Control Getting Started](#)
- [11 OPERATION](#)
- [12 Typical R190A Wiring Diagram](#)
- [13 Documents / Resources](#)
  - [13.1 References](#)
- [14 Related Posts](#)



Digital Alert Systems R190A Dishwasher Lan Hub Controller



## Specifications:

- Number of relays: 4 Individually controlled rated for 1Amp at 28 Volts DC, SPDT, NO, NC. Latch ON, Latch OFF, and Momentary from .1 to 86,400 Seconds.
- Connections: 10/100 baseT via RJ45
- Power requirements: +12 volts DC; 100-240 VAC wall unit supplied
- Indicator lights: One (1) to indicate Power on the front panel.
- Two (2) to indicate Connectivity, and Activity on the rear panel.
- Equipment Supplied: Power Supply, 14 position terminal plug, Mounting Hardware

## Product Usage Instructions

### • EAS Overview:

The Digital Alert Systems' R190A Hub Controller provides the ability to switch equipment at a remote site or CATV Hub during EAS Alerts. It uses a LAN or WAN connection from a control device such as the DASDEC EAS Encoder/Decoder. The unit has 4 relays that are individually addressable. When used with the DASDEC they can be triggered based on FIPS codes

## EAS Getting Started:

### • Setting the IP address:

The R190A has a default IP address of 192.168.1.2. Access the device as follows:

- Direct connection to a networked host computer
- LAN connection with a networked host computer: Connect a standard CAT-5E network cable from the RJ45 port at the back of the R190A into a routing hub or other network-switching device. Consult with your network administrator to ensure the R190A's default network address of 192.168.1.2 will be visible on the network or will not clash with an existing node. Once the R190A is powered up it can be accessed via a web browser from any remote computer on the LAN routed to see the address 192.168.1.2.

## FAQ:

### • What are the default passwords for different revisions of the R190A?

- **For Rev H units and earlier:** The password is 'monroe'.
- **For Rev I units and later:** The password is 'digital'.

## Instruction Manual

LAN Hub Controller Model R190A

- Digital Alert Systems, Inc.
- 100 Housel Ave
- Lyndonville NY 14098-0535
- [585-765-2254](tel:585-765-2254)
- fax [585-765-9330](tel:585-765-9330) [www.digitalalertsistemas.com](http://www.digitalalertsistemas.com)
- 1340221

## Warranty

- Digital Alert Systems, Inc. (DAS) warrants to the owners, each instrument and sub-assembly manufactured by them to be free from defects in material and workmanship for a period of two years after shipment from factory. This warranty is applicable to the original purchaser only.
- Liability under this warranty is limited to service, adjustment or replacement of defective parts (other than fuses and batteries) on any instrument or sub-assembly returned to the factory for this purpose, transportation charges prepaid.
- This warranty does not apply to instruments or sub-assemblies subjected to abuse, abnormal operating conditions, or unauthorized repair or modification.
- Since Digital Alert Systems, Inc. has no control over conditions of use, no warranty is made, or implied as to the suitability of our product for the customer's intended use.
- THE WARRANTY SET FORTH IN THIS ARTICLE IS EXCLUSIVE AND IN LIEU OF ALL OTHER WARRANTIES AND REPRESENTATIONS, EXPRESS, IMPLIED OR STATUTORY INCLUDING, BUT NOT LIMITED TO THE IMPLIED WARRANTIES OF MERCHANTABILITY AND FITNESS. Except for obligations expressly undertaken by DAS, in this warranty, Owner hereby waives and releases all rights, claims and remedies with respect to any and all warranties, express, implied or statutory (including without limitation, the implied warranties of merchantability and fitness), and including but without being limited to any obligation of DAS with respect to incidental or consequential damages, or damages for loss of use. No agreement or understanding varying or extending the warranty will be binding upon DAS unless in writing signed by a duly authorized representative of DAS.
- In the event of a breach of the foregoing warranty, the liability of DAS shall be limited to repairing or replacing the non-conforming goods and/or defective work, and in accordance with the foregoing, DAS shall not be liable for any other damages, either direct or consequential.

## Return Policy to Factory

- Materials returned to DAS must have a Return Material Authorization number. To obtain a RMA number, contact Customer Service at [585-765-2254](tel:585-765-2254), email [support@digitalalertsistemas.com](mailto:support@digitalalertsistemas.com), or fax [585-765-9330](tel:585-765-9330). Customers have 30 days to determine that the product ordered fills their need and performs as described in DAS's literature. Units returned for approved repair or credit must be in the original packaging including all parts and paperwork plus be in very good physical condition. If not, the customer is billed for the cost to refurbish the unit and for missing accessories and merchandise. No products may be returned for exchange or credit after 12 months of the shipment date. DAS reserves the right to repair or replace units under warranty.

## Specifications

- **Number of relays**
  - 4 Individually controlled rated for 1Amp at 28 Volts DC,
  - SPDT, NO, NC. Latch ON, Latch OFF, and Momentary from .1 to 86,400 Seconds.
- **Connections**
  - 10/100 baseT via RJ45

- **Power requirements**
  - + 12 volts DC; 100-240 VAC wall unit supplied.
- **Indicator lights**
  - One (1) to indicate Power on the front panel.
  - Two (2) to indicate Connectivity, and Activity on the rear panel.
- **Equipment Supplied**
  - Power Supply
  - 14 position terminal plug
  - Mounting Hardware

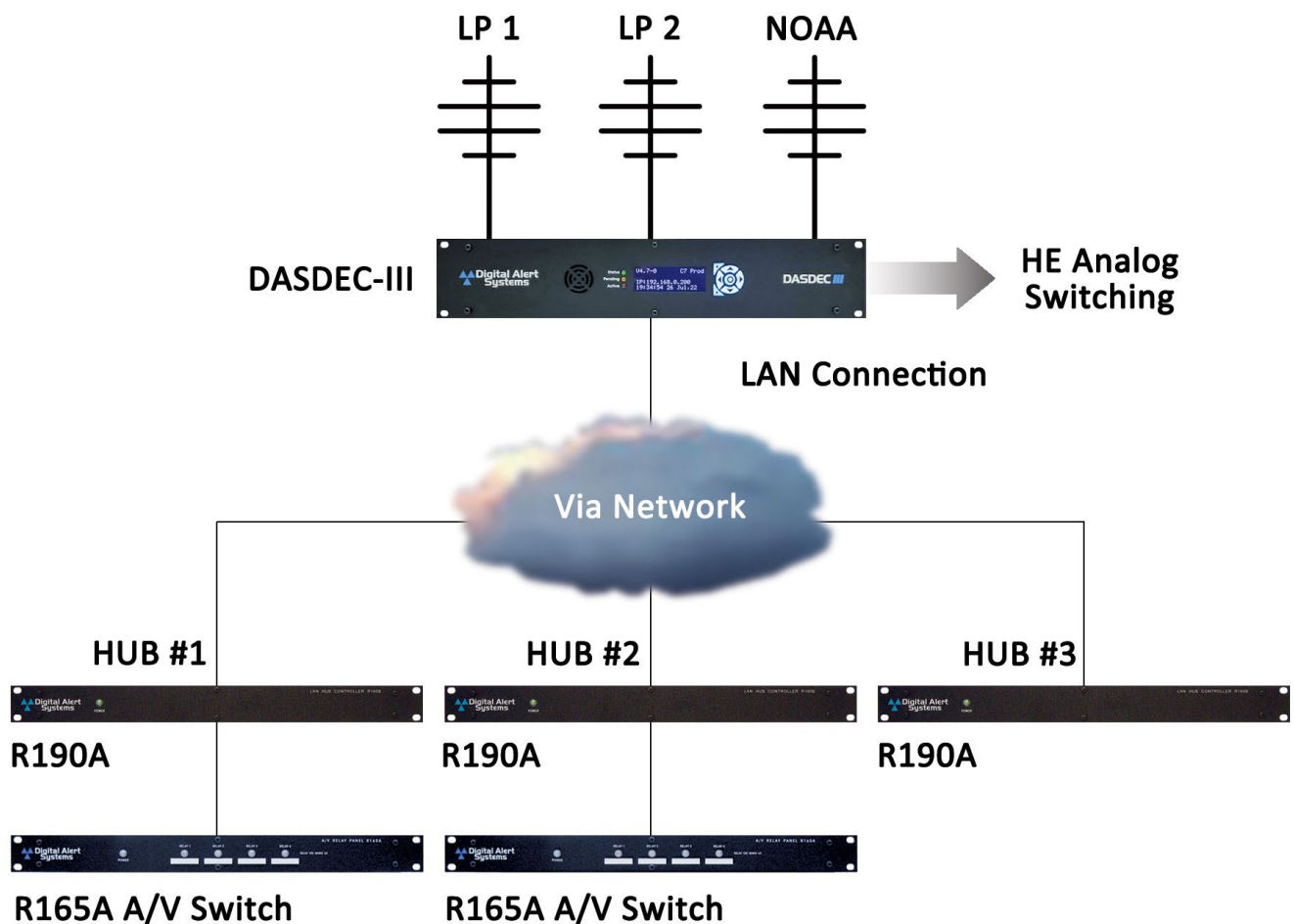


- Front View
- Rear View



## EAS Overview

- The Digital Alert Systems' R190A Hub Controller provides the ability to switch equipment at a remote site or CATV Hub during EAS Alerts. It uses a LAN or WAN connection from a control device such as the DASDEC EAS
- Encoder/Decoder. The unit has 4 relays that are individually addressable. When used with the DASDEC they can be triggered based on FIPS codes.



## EAS Getting Started

- **Setting the IP address**

The R190A has a default IP address of 192.168.1.2. Access the device as follows:

### Direct connection to a networked host computer

- Connect a CAT-5E network crossover cable to the RJ45 port at the back of the R190A and to the RJ45 port of the network interface card (NIC) of a standalone PC or notebook computer. Configure the
- PC to use the static IP address 192.168.1.3 with a net mask of 255.255.255.0. Once the R190A is powered up it can be accessed via a Web browser on the host computer.
- Launch a Web browser application and direct the URL to <http://192.168.1.2/>. The R190A will provide a gateway page and quickly redirect to the R190A Home page. To edit the R190A's IP address type the following IP address
- <http://192.168.1.2/setup.html>.
- LAN connection with a networked host computer
  - Connect a standard CAT-5E network cable from the RJ45 port at the back of the R190A into a routing hub or other network-switching device. Consult with your network administrator to ensure the
  - R190A's default network address of 192.168.1.2 will be visible on the network or will not clash with an existing node. Once the R190A is powered up it can be accessed via a web browser from any remote

computer on the LAN routed to see the address 192.168.1.2.

- Setup Configuration – The Setup mode of the R190A permits several custom settings, these include the unit's IP address, Netmask, Gateway, network speed, mode and passwords. No username is required to log into Setup, and the default password is shown in bold between the quotes "digital". The following screenshots show the setup pages.
- **Please note:** Rev H units and earlier the password is 'monroe'. Beginning with Rev I units and later the password is 'digital'.

192.168.1.2

192.168.1.2/setup.html

To see favorites here, select then , and drag to the Favorites Bar folder. Or import from another browser. [Import favorites](#)

**Digital Alert Systems**

**Setup**

**Network** **Password** **Relay 1** **Relay 2** **Relay 3** **Relay 4** **Control Page**

Model: X-WR-4R3-I:M

Product Revision: 2.74c

Serial Number: 00:0C:C8:04:6E:69



For product support call [1-585-765-2254](tel:1-585-765-2254)


Digital Alert Systems, Inc., 100 Housel Avenue, Lyndonville, NY 14098  
phone: [1-585-765-2254](tel:1-585-765-2254) fax: 1-585-765-9330

192.168.1.2

print screen capture both w

192.168.1.2/setup.html

To see favorites here, select  then , and drag to the Favorites Bar folder. Or import from another browser. [Import favorites](#)



# Setup

Network

Password

Relay 1

Relay 2

Relay 3

Relay 4

Control Page

Model: X-WR-4R3-I:M

Product Revision: 2.74c

Serial Number: 00:0C:C8:04:6E:69

For product support call [1-585-765-2254](tel:1-585-765-2254)

Digital Alert Systems, Inc., 100 Housel Avenue, Lyndonville, NY 140

phone: [1-585-765-2254](tel:1-585-765-2254) fax: 1-585-765-9330

Windows Security

Microsoft Edge

The server 192.168.1.2 is asking for your user name and password. The server reports that it is from secure\_setup.

Warning: Your user name and password will be sent using basic authentication on a connection that isn't secure.

User name

Password


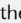
OK


Cancel

192.168.1.2

print screen capture both w

192.168.1.2/setup.html

To see favorites here, select  then , and drag to the Favorites Bar folder. Or import from another browser. [Import favorites](#)



# Setup

Network

Password

Relay 1

Relay 2

Relay 3

Relay 4

Control Page

Model: X-WR-4R3-I:M

Product Revision: 2.74c

Serial Number: 00:0C:C8:04:6E:69

For product support call [1-585-765-2254](tel:1-585-765-2254)

Digital Alert Systems, Inc., 100 Housel Avenue, Lyndonville, NY 140

phone: [1-585-765-2254](tel:1-585-765-2254) fax: 1-585-765-9330

Windows Security

Microsoft Edge

The server 192.168.1.2 is asking for your user name and password. The server reports that it is from secure\_setup.

Warning: Your user name and password will be sent using basic authentication on a connection that isn't secure.

User name

.....

OK

Cancel



192.168.1.2 print screen capture both w

192.168.1.2/setup.html

To see favorites here, select then , and drag to the Favorites Bar folder. Or import from another browser. [Imp](#)

# Digital Alert Systems

## Setup

Network	Password	Relay 1	Relay 2	Relay 3	Relay 4	Control Page
<p><b>Network:</b></p> <p>Network parameters require reboot before they take effect.</p> <p>IP Address: 192 . 168 . 1 . 2</p> <p>Netmask: 255 . 255 . 255 . 0</p> <p>Broadcast: 192 . 168 . 1 . 255</p> <p>Gateway: 192 . 168 . 1 . 1</p> <p>TCP Port: 80</p> <p>Modbus Port: 502</p> <p>Speed: 10 Mbps <input checked="" type="radio"/> 100 Mbps <input type="radio"/></p> <p>Mode: Half Duplex <input checked="" type="radio"/> Full Duplex <input type="radio"/></p> <p>Submit Reset</p>						

- Changing the Network settings – Enter the new network settings as desired. Click on “Submit” to save. These new changes will show up in the Network tab but will not take effect until power is removed and reapplied to the unit.
- Permanent storage of IP change – To store the new Network settings into memory, remove the power from the unit, wait approximately 10 seconds, and reconnect the power to the unit.
- **Note:** To set the unit back to the default factory settings, remove the power from the unit, press and hold the Reset button on the back of the unit, and reconnect the power to the unit. After approximately 10 seconds release the Reset button and the unit will be set back to the default IP address of 192.168.1.2.
- Password Settings – The R190A allows programming of a Setup password and a Control password. Setup default password is “digital”, with the Control password disabled. Passwords can be up to 10 characters in length. To save changes to either the Setup or the Control password, click on the “Submit” button.
- If the password(s) are forgotten, the R190A can be reset to factory defaults by removing the power from the unit, pressing, and holding the Reset button on the back of the unit, and reconnecting the power to the unit. After approximately 10 seconds release the Reset button and the unit will be set back to the default password of “digital” for the Setup and no password for the Control.
- **Caution:** Pressing the reset switch will reset ALL user settings back to default. This includes network IP address and associated settings.
- **Please note:** Rev H units and earlier the password is ‘monroe’.
- Beginning with Rev I units and later the password is ‘digital’.




192.168.1.2

print screen capture both w

192.168.1.2/setup.html

To see favorites here, select ☆ then ☆, and drag to the Favorites Bar folder. Or import from another browser. [Import](#)



# Digital Alert Systems

Setup

NetworkPasswordRelay 1Relay 2Relay 3Relay 4Control Page

Password:

Setup Password:.....

Re-enter Setup Password:.....

Enable Control Password: Yes ☐ No ☒

Control Password:.....

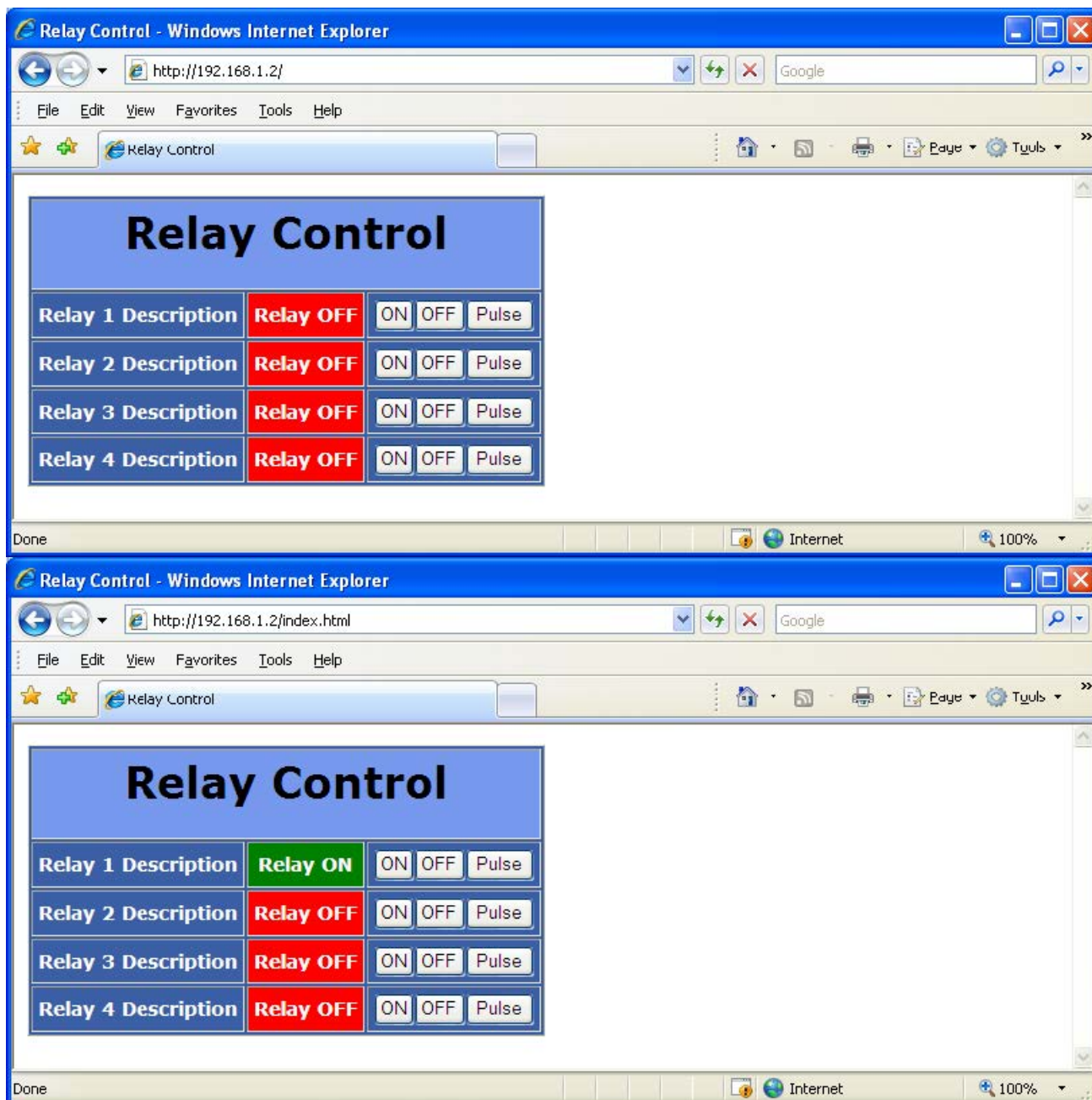
Re-enter Control Password:.....

Submit

Reset

## Operation

- Test the unit in the same manner it was accessed and programmed.
- Enter the unit's IP address into your browser and the following display will be shown.
- Triggering any of the four relays can be done in either a latching mode or Pulse. Clicking on the button, On, Off, or Pulse, on the desired relay will allow you to test that the device being controlled by the
- R190A is functioning properly. The color of the relay status will change from red to green when the relay is closed.



### Configure your DASDEC EAS Encoder/Decoder

- Digital Alert Systems' DASDEC EAS Encoder/Decoder can be used in conjunction with the R190A for remote hub switching if local access channels are to be overridden during EAS alerts. The R190A
- LAN controlled device has four independently controlled relays. Each relay can be programmed to activate by a choice of three triggers. In addition to the three triggers it can be set up to filter its activation by FIPS code(s) and EAS code(s). The DASDEC can control up to 8 of these hub controllers.

Send Alerts    Alert Events    System    **Setup**

Main   Station   Alert Agent™   Demo/Practice   Audio   Video/CG   **Net Alerts**   Email   GPIO   Printer   Alert Storage   Network   Time   Users

EAS NET   CAP Decode   DVS644 (SCTE18)   Stream MPEG   Net CG   Net Switch   **Net GPIO**

☒ **Enable Interface(s).** *Enabled. Uncheck to disable.*

\*NETGPIO 0   **Select client**    (effective immediately)

1 defined client interface and 4 allocated ports (max of 32 ports).

☐ **Listen for any Net GPI Input.** *Disabled. Check to enable.*    (effective immediately)

      (effective immediately)

☒ **ENABLE Client Interface.** *Enabled. Uncheck to disable client.*

IP Address:  IP address syntax is not valid!   Name: NETGPIO 0    (Not set)

Net GPIO timeout (50-500 millisecs):    Model (Effective immediately & saves all changes!):

#Utilized Ports (max=4; unutilized=0):

**NET GPIO Output Relay 1**  
Relay is closed:

**NET GPIO Output Relay 2**  
Relay is closed:

**NET GPIO Output Relay 3**  
Relay is closed:

**NET GPIO Output Relay 4**  
Relay is closed:

- Setup > Net Alerts > Net GPIO
- **Note:** Before enabling the Hub Controller, THE R190A MUST BE SET TO AN IP ADDRESS THAT IS WITHIN YOUR INTERNAL LAN
- Enable Interfaces by checking the box as shown above, then enable the individual client interface by checking the box also shown above. Enter the new IP address for the R190A as shown in the following screen. The DASDEC will attempt to ping the R190A and display the status. Verify that the status is OK. Accept changes. You can also program the password if desired.
- Select the required condition to close each relay. Once selected the Activating FIPS and Activating EAS Codes boxes will be displayed. The default setting is “Any FIPS” and “Any EAS Codes” which triggers the relay when an alert is detected.

☒ **ENABLE Client Interface.** *Enabled. Uncheck to disable client.*

192.0.0.93 **IP Address**

**Ping to Remote Net GPIO Unit**  
[OK](#)  
[Link to Remote Device Control](#)  
[Page](#)  
[Link to Remote Device Setup](#)  
[Page](#)

R190A **Name**  
 WebRelay Quad/Monroe-R190A/R197/R198 **Model** (Effective immediately & saves all changes!)

**Enter New Password** (Not set)

200 **Net GPIO timeout (50-500 millisecs)**  
 4 **#Utilized Ports** (max=4; unutilized=0)

---

**NET GPIO Output Relay 1**

Relay is closed:  
 During EAS Audio Playback

**Current Status: Open (OFF)**

**FIPS Group**  
 LOCAL\_AREA\_FIPS  
 United States (000000)  
 Northeast Orleans, NY (336073)  
 Pennsylvania (042000)  
 Bradford, PA (042015)  
 23 locations

**EAS Group**  
 All

**Source alert FCC EAS Station IDs Activation criteria string**

**Any incoming alert Station ID will trigger this GPO.**  
ONLY use to match on specific incoming alert station IDs! Up to 8 character each, separate each source EAS station ID with a | char, eg. STAT1|STAT2 screens for the two FCC EAS station identifiers STAT1 or STAT2. The \* or space character matches all FCC EAS Station IDs.

---

**NET GPIO Output Relay 2**

Relay is closed:  
 During EAS Audio Playback

**Current Status: Open (OFF)**

**FIPS Group**  
 WEEKLY\_TEST  
 Lackawanna, PA (042069)  
 1 locations

**EAS Group**  
 DIGINETS\_EAS  
 BZW : BLIZZARD WARNING  
 CAE : CHILD ABDUCTION EMERGENCY  
 CDW : CIVIL DANGER WARNING  
 CEM : CIVIL EMERGENCY MESSAGE  
 20 codes

**Source alert FCC EAS Station IDs Activation criteria string**  
 \*

**Any incoming alert Station ID will trigger this GPO.**

- Setup > Alert Agent > Net GPIO – FIPS Groups and EAS Code Groups
- Relay activation can be programmed to close when Alerts for specific FIPS areas or EAS codes are present.
- Click on the “FIPS Group” link to select FIPS codes from the FIPS pools. When the desired FIPS codes are selected click the “Accept Changes” button and they will be added to the FIPS list to the right.
- When finished, return to
- Setup > Net Alerts > Net GPIO
- Repeat this step for all of the required relays.
- The same process is used for editing the activating EAS codes.
- Click on the “EAS Group” link to select EAS codes from the EAS pools. When the desired FIPS codes are selected click the “Accept Changes” button and they will be added to the FIPS list to the right.
- When finished, return to Setup > Net Alerts > Net GPIO
- Repeat this step for all of the required relays.

Select from the [Encoder FIPS pool](#) to add the the list of allowed FIPS that trigger this client.  
 Use **Add FIPS selected above...** to add selections.

Orleans, NY (036073)  
 Genesee, NY (036037)  
 Monroe, NY (036055)  
 Niagara, NY (036063)

Select from the [Forwarding FIPS pool](#) to add the the list of allowed FIPS that trigger this client.  
 Use **Add FIPS selected above...** to add selections.

Orleans, NY (036073)  
 Genesee, NY (036037)  
 Monroe, NY (036055)  
 Niagara, NY (036063)

**Add FIPS selected above to list**

**FIPS List.**  
 Alerts to these locations can trigger Hub Controller output.  
 Orleans, NY (036073)  
 New York (036000)  
 Remove Selected

**Choose from All EAS Codes:**  
 EAN : NATIONAL EMERGENCY ACTION NOTIFICATION  
 EAT : NATIONAL EMERGENCY ACTION TERMINATION  
 NIC : NATIONAL INFORMATION CENTER  
 NPT : NATIONAL PERIODIC TEST  
 DMO : PRACTICE/DEMO WARNING  
 RMT : REQUIRED MONTHLY TEST  
 RWT : REQUIRED WEEKLY TEST  
 ADM : ADMINISTRATIVE MESSAGE  
 Add EAS Codes selected above to list

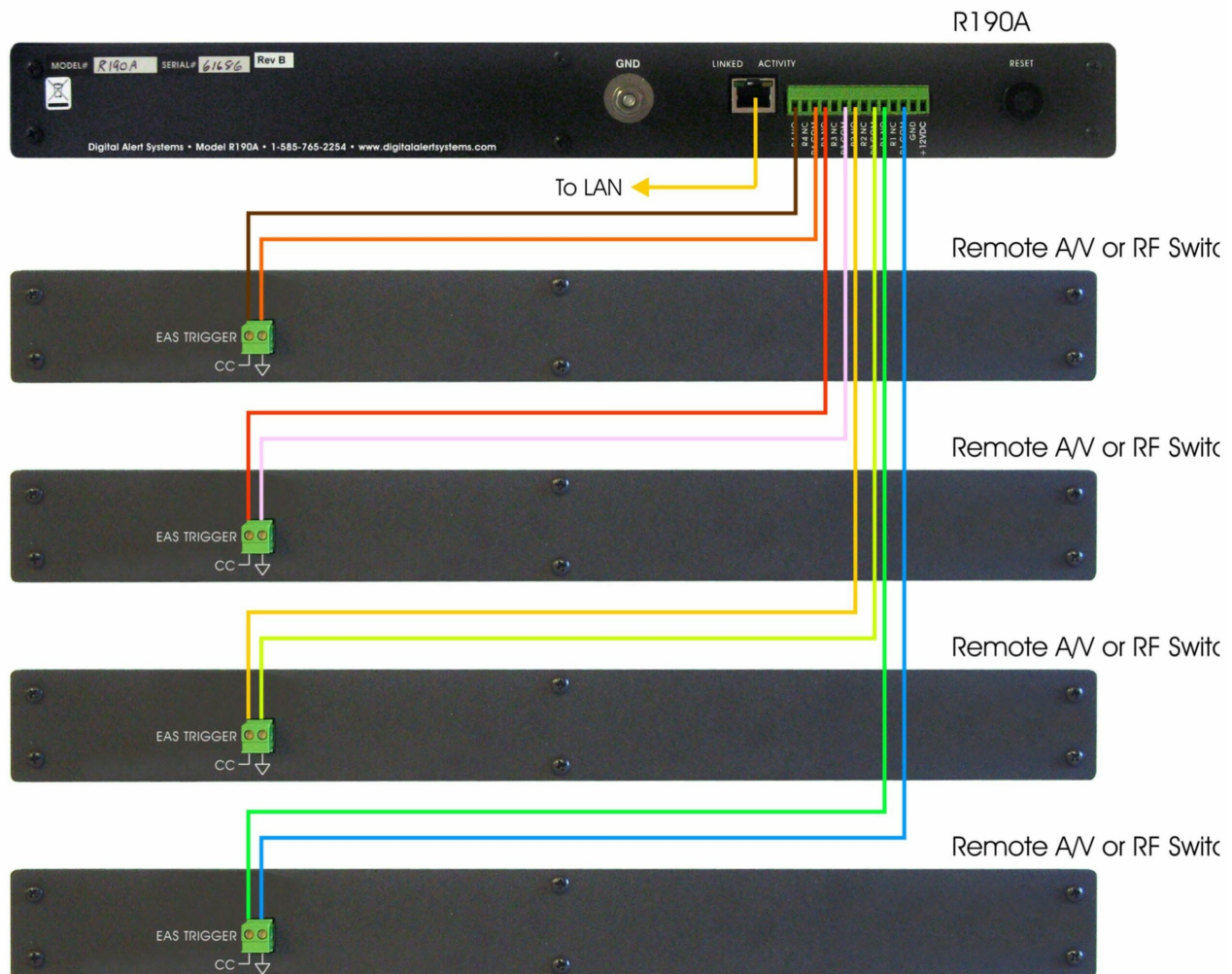
**EAS Codes.**  
 Only alerts with these codes trigger Hub Controller relay.  
 NATIONAL EMERGENCY ACTION NOTIFICATION  
 EARTHQUAKE WARNING  
 NATIONAL EMERGENCY ACTION TERMINATION  
 Remove Selected

**FIPS Editing Finished**  
 When FIPS editing is finished, select this button.

**EAS Codes Editing Finished**  
 When EAS Codes editing is finished, select this button.

## Typical R190A Wiring Diagram





## Remote Control Overview

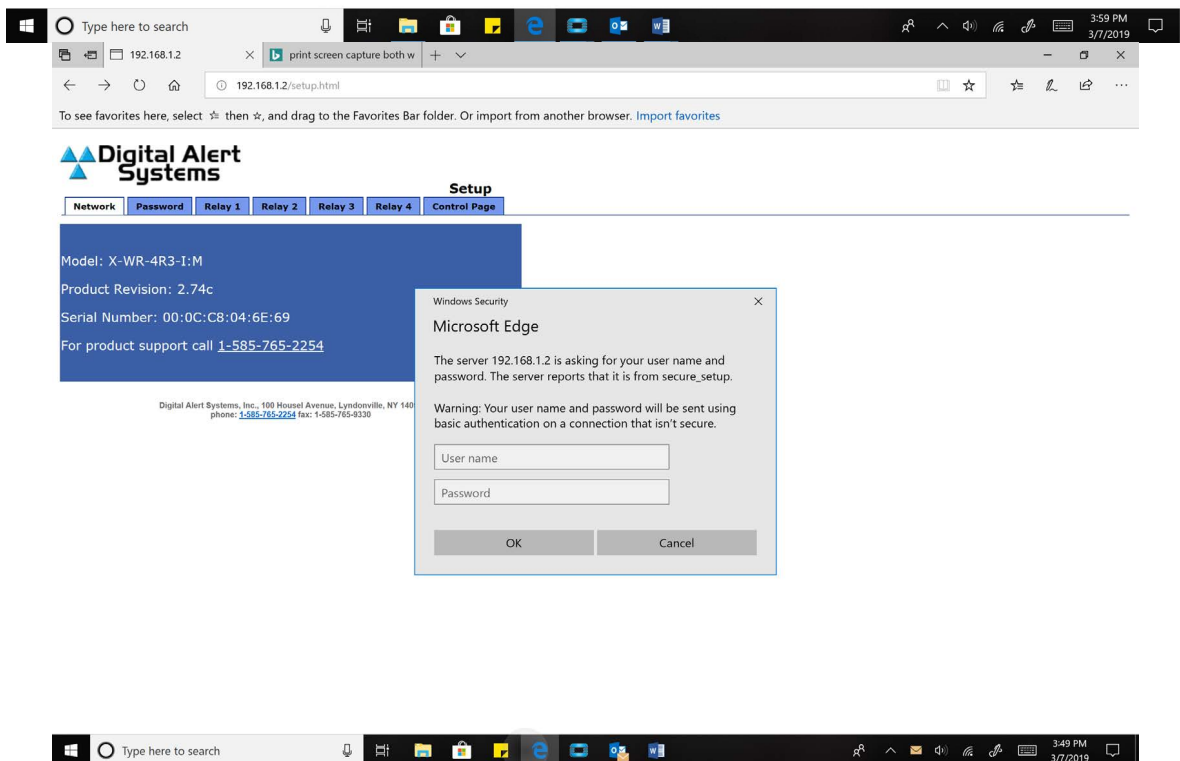
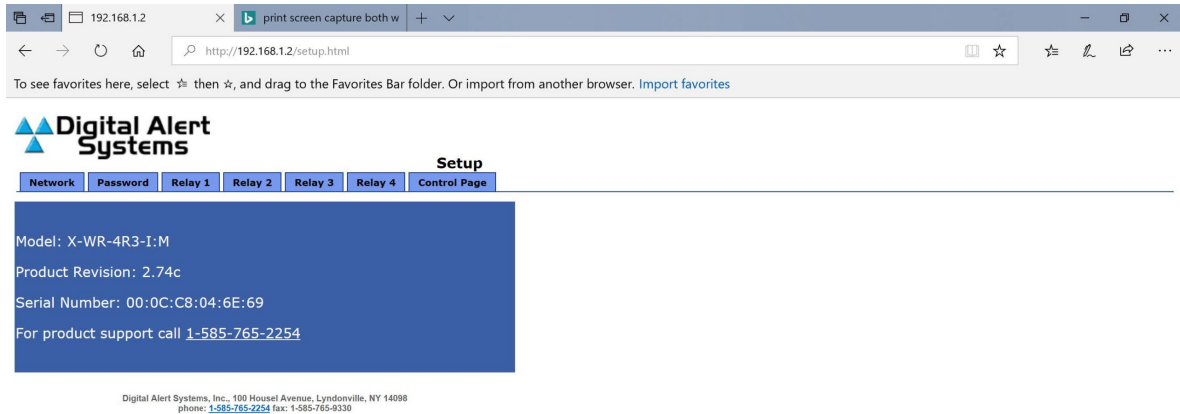
- In its basic configuration, the R190A is a simple remote control that allows the user to command 4 DPST relays at a remote location. These commands can be issued from any computer with a web browser through a network connection to the R190A.
- Equipment within the power limits of the relay contacts can be directly connected to the R190A and be easily controlled from any network location.
- Additionally, the R190A can be directly connected to any of the contact closure-controlled switches manufactured by Digital Alert Systems so that audio/video, IF or RF type switching can be accomplished.
- Set-up and configuration are done by using the built-in web page where IP address, password and relay labels are entered.
- Once configured for the user's network, on, off or momentary relay control can be accomplished by clicking a button on the web page.

## Remote Control Getting Started

- Setting the IP address— Setting the IP address for remote control applications is identical to the procedure used for EAS applications. Follow the steps in the EAS Getting Started section to set the device IP address for your network.
- Setup Configuration – The Setup mode of the R190A allows you customize several settings, including the unit's IP address, Netmask, Gateway, network speed, mode and passwords. No username is required to log into Setup, and the default password is shown in bold between the quotes "digital". The following screenshots show

the setup pages.

- **Please note:** Rev H units and earlier the password is 'monroe'. Beginning with Rev I units and later the password is 'digital'.



- Click NETWORK to change the IP address and other Network settings.



**Digital Alert Systems**

**Setup**

Network Password Relay 1 Relay 2 Relay 3 Relay 4 Control Page

**Network:** Network parameters require reboot before they take effect.

IP Address: 192 168 1 2  
 Netmask: 255 255 255 0  
 Broadcast: 192 168 1 255  
 Gateway: 192 168 1 1  
 TCP Port: 80  
 Modbus Port: 502

Speed: 10 Mbps ☒ 100 Mbps ☐  
 Mode: Half Duplex ☒ Full Duplex ☐

Submit Reset



- Changing the Network settings – Enter the new network settings as desired. To save click on “Submit”. These new changes will show up in the Network tab but will not take effect until the power is removed and reapplied to the unit.
- Permanent storage of IP change – To store the new Network settings into memory, remove the power from the unit, wait approximately 10 seconds, and reconnect the power to the unit.
- **Note:** To reset to the default factory network settings, remove the power from the unit, press and hold the Reset button on the back of the unit, and reconnecting the power to the unit. After approximately 10 seconds you can release the Reset button and the unit will be set back to the default IP address of 192.168.1.2.
- Password Settings – The R190A allows programming of a Setup and a Control password. Setup default password is “digital”, with the Control password is disabled. Passwords can be up to 10 characters in length. To save changes to either the Setup or the Control password, click on the “Submit” button.
- If the password(s) are forgotten, the R190A can be reset to factory defaults by removing the power from the unit, pressing and holding the Reset button on the back of the unit, and reconnecting the power to the unit. After approximately 10 seconds you can release the Reset button and the unit will be set back to the default password of “digital” for the Setup and no password for the Control.
- **Caution:** Pressing the reset switch will reset ALL user settings back to default. This includes network IP address and associated settings.
- **Please note:** Rev H units and earlier the password is ‘monroe’.
- Beginning with Rev I units and later the password is ‘digital’.

192.168.1.2

print screen capture both w

192.168.1.2/setup.html

To see favorites here, select then , and drag to the Favorites Bar folder. Or import from another browse

**Digital Alert Systems**

**Setup**

**Network** **Password** **Relay 1** **Relay 2** **Relay 3** **Relay 4** **Control Page**

**Password:**

Setup Password:

Re-enter Setup Password:

Enable Control Password: Yes ☐ No ☒

Control Password:

Re-enter Control Password:

Submit Reset

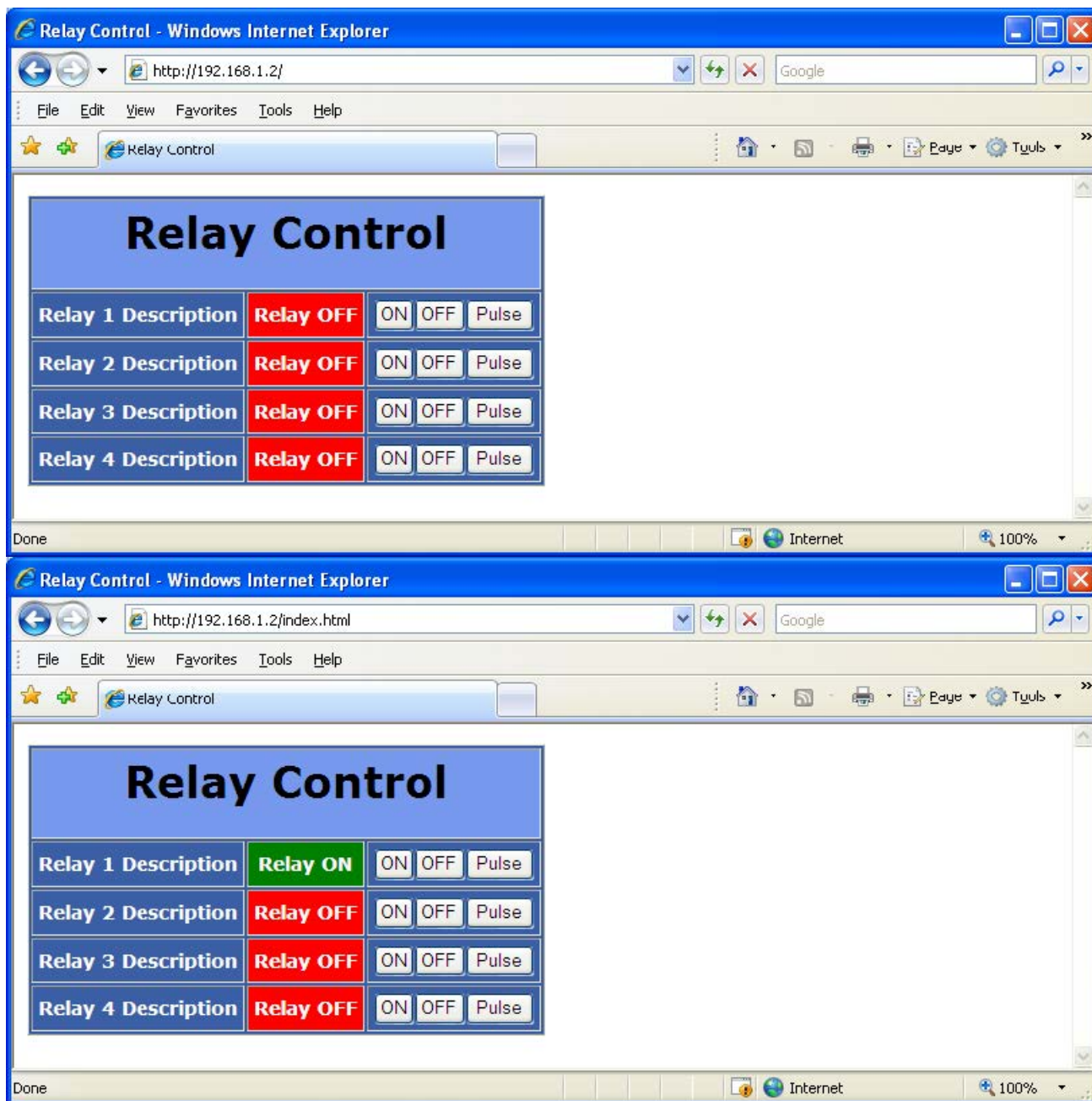
## Relay Configuration

- From the main menu, click the Relay 1 tab to setup how the relay 1 section of the control page will be displayed.
- Main Header – If desired, enter text to be displayed for the main header on the control page.
- Auto Refresh Page & Duration – Controls whether or not to continuously refresh the relay control page to update the relay status. The duration sets the time the page is held before it is refreshed, from 1 to 32 seconds.
- Relay Description – If desired, enter text to be displayed in the relay name box on the control page.
- Display Relay Status – Click the yes or no radio button to turn on or off updating relay 1 status.
- Status ON Colors – Select the desired color to be displayed when the relay is turned on.
- Status ON Text – Enter the text to be displayed when the relay is turned on.
- Status OFF Color & Text – Enter colors and text to be displayed when the relay is turned off.
- ON/OFF Buttons –
- Button 1 & 2 Labels – Enter the desired text to be displayed on the relay actuator buttons.
- Pulse Button – Click the corresponding radio button to turn on or off the display of the pulse button.
- Pulse Button Label – Enter the desired text for the pulse button.
- Pulse Duration – Enter the time desired for the relay contacts to be momentarily closed. Time can be from 0.1 seconds to 86,400 seconds (1 day).

## OPERATION

- Test the unit by accessing the unit in the same manner it was programmed.

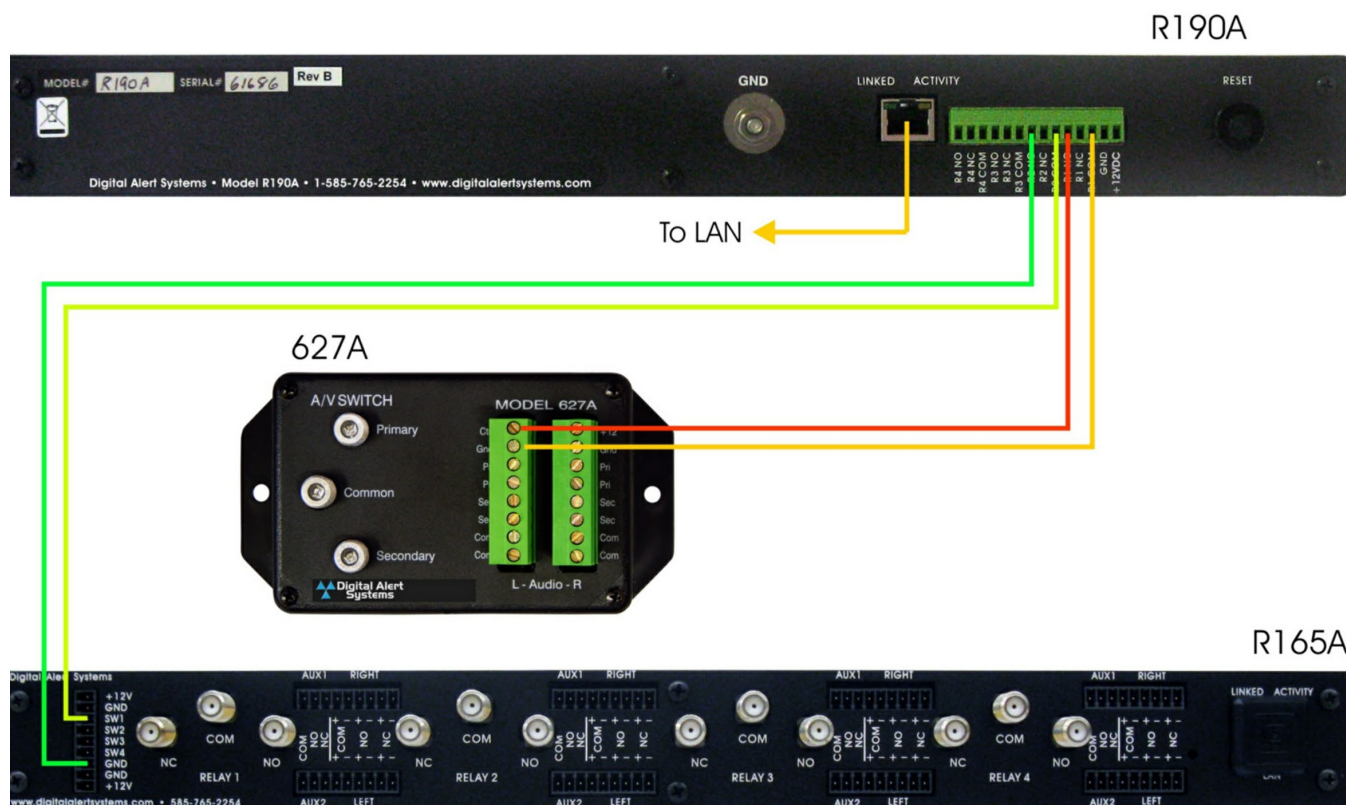
- Enter the unit's IP address into your browser and the following display will be shown.
- Triggering any of the four relays can be done in either a latching mode or Pulse. Clicking on the button, On, Off, or Pulse, on the desired relay will allow you to test that the device being controlled by the
- R190A is functioning properly. The color of the relay status will change from red to green when the relay is closed.




## Applications

- The R190A will control any device within the power limits of its relay contacts. Adding a power relay that is energized by the R190A can control devices consuming additional power.
- The R190A will control all of the contact closure operated switches manufactured by Digital Alert Systems. A general wiring application of these switches is shown below.

## Typical R190A Wiring Diagram



## Documents / Resources

 <p>Instruction Manual LAN Hub Controller Model R190A</p>	<p><a href="#">Digital Alert Systems R190A Dishwasher Lan Hub Controller</a> [pdf] Instruction Manual R190A Dishwasher Lan Hub Controller, R190A, Dishwasher Lan Hub Controller, Lan Hub Controller, Hub Controller, Controller</p>
--	---

## References

- [EAS | Digital Alert Systems](#)
- [User Manual](#)

[Manuals+](#), [Privacy Policy](#)

This website is an independent publication and is neither affiliated with nor endorsed by any of the trademark owners. The "Bluetooth®" word mark and logos are registered trademarks owned by Bluetooth SIG, Inc. The "Wi-Fi®" word mark and logos are registered trademarks owned by the Wi-Fi Alliance. Any use of these marks on this website does not imply any affiliation with or endorsement.