

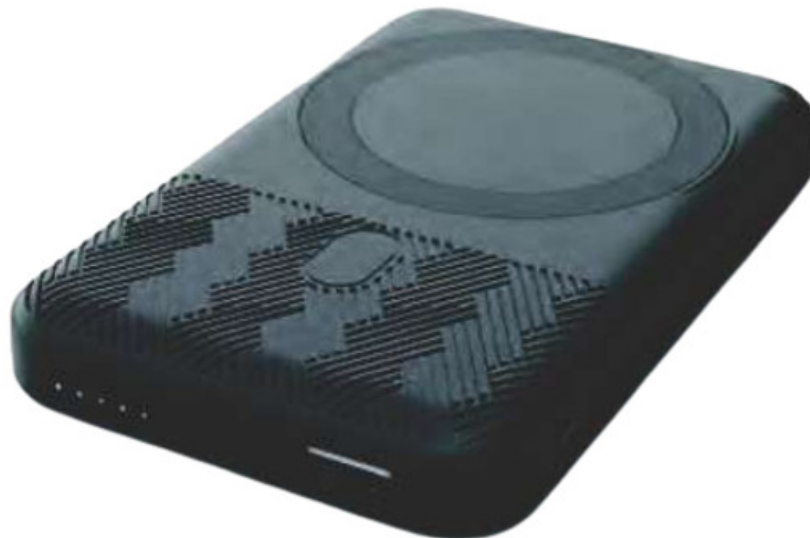


# digipower WPC-PB-MS10 Magsafe Compatible Powerbank User Guide

[Home](#) » [digipower](#) » digipower WPC-PB-MS10 Magsafe Compatible Powerbank User Guide 



**MAGSAFE COMPATIBLE  
10,000MAH POWERBANK**



**QUICK GUIDE  
Item No. WPC-PB-MS10**

## Contents

- [1 FIRST USE](#)
- [2 USING THE POWERBANK FOR WIRELESS CHARGING](#)
- [3 USING THE POWERBANK FOR USB WIRED CHARGING](#)
- [4 USING THE STAND](#)
- [5 PRODUCT SPECIFICATIONS](#)
- [6 FCC STATEMENT:](#)
- [7 Documents / Resources](#)

## FIRST USE

- Fully charge the powerbank before first use
- Connect the included USB-C cable into the USB-C port on the powerbank and the other end into a USB wall charger or car charger.
- The cable has a tethered USB A to USB-C adapter so it can work with any USB charger
- The white LEDs will blink in sequence. When all four white LEDs remain lit, the powerbank is fully charged



- Quick press the power button located on the right side, close to the USB ports.
- The white LEDs will light up to indicate the charge level

- 1 LED <25%
- 2 LEDs 25% to 50%
- 3 LEDs 50% to 75%
- 4 LEDs > 75%
- Double tap the power button to turn the LEDs off.

**Note:** the LEDs will automatically turn off in approximately 70 seconds if the powerbank is not in use. When the LEDs are off, the power bank is off.

## USING THE POWERBANK FOR WIRELESS CHARGING



- The MagSafe feature only works for the iPhone 12 or later models
- The wireless charger will work with any Qi wireless compatible phone
- Press the power button to turn the powerbank on
- Place your phone on the wireless charging surface
- For iPhone 12 or later models, the MagSafe feature will align the phone to the charging surface
- Your phone's screen will indicate it is charging
- The LEDs on the powerbank will remain on when a device is charging. When a single white LED is blinking, it is time to recharge the powerbank.
- When the blue LED is lit, that indicates wireless charging is in use. The blue LED will remain on when wireless charging is used.

## USING THE POWERBANK FOR USB WIRED CHARGING



- Use the included USB cable or another USB cable to connect your device to the USB A or USB-C port.
- Press the power button to start charging
- Your phone's screen will indicate it is charging
- The LEDs on the powerbank will remain on when a device is charging. When a single white LED is blinking, it's time to recharge the powerbank.
- You can charge two USB devices at the same time.
- You can charge a device wirelessly and via one of the USB ports at the same time. The charge rate will be slower for both wireless and USB charging.
- It is not recommended to use wireless charging and both USB ports simultaneously.
- The green LED will only light up in fast charge mode. Fast charge mode does not work when wireless and the USB ports are used at the same time.

## USING THE STAND

- Fold the stand out and place the powerbank in the horizontal position
- Place your phone on the front of the stand



## PRODUCT SPECIFICATIONS

Cell type:	lithium polymer
Capacity:	10k mAh (37Wh)
Wireless charging:	5W/7.5W/10W/15W
USB-C input:	5V/3A, 9V/2A, 12V/1.5A
USB-C output:	5V/3A, 9V/2.22A, 12V/1.67A
USB-A output:	QC 3.0 – 5V/3A, 9V/2A, 12V/1.5A
Includes:	30cm USB-C to USB-C cable with USB A tethered adapter

Questions? Problems? Picked up the wrong item?

Before returning to the Store, please give our customer service team a chance to help.

Email us at [TechSupport@Mizco.com](mailto:TechSupport@Mizco.com) for a seamless and speedy resolution

Mirco International, Inc.

Cranford, New Jersey 07016

All rights reserved.

DIGIPOWER is a registered trademark of Mita International Inc.

## FCC STATEMENT:

### FCC ID: RZO-WPCPBMS10

This equipment has been tested and found to comply with the limits for a Class B digital device, pursuant to Part 15 of the FCC Rules. These limits are designed to provide reasonable protection against harmful interference in a residential installation. This equipment generates uses and can radiate radio frequency energy and, if not installed and used in accordance with the instructions, may cause harmful interference to radio communications. However, there is no guarantee that interference will not occur in a particular installation. If this equipment does cause harmful interference to radio or television reception, which can be determined by turning the equipment off and on, the user is encouraged to try to correct the interference by one or more of the following measures:

- Reorient or relocate the receiving antenna.
- Increase the separation between the equipment and receiver.
- Connect the equipment into an outlet on a circuit different from that to which the receiver is connected.
- Consult the dealer or an experienced radio/TV technician for help.

This device complies with Part 15 of the FCC Rules.

Operation is subject to the following two conditions:

1. this device may not cause harmful interference, and
2. this device must accept any interference received, including interference that may cause undesired operation.

**CAUTION:** Changes or modifications not expressly approved by the party responsible for compliance could void the user's authority to operate the equipment. This equipment complies with FCC radiation exposure limits set forth for an uncontrolled environment.

This equipment should be installed and operated with minimum distance 20cm between the radiator and your body. This transmitter must not be co-located or operating in conjunction with any other antenna or transmitter.



## WARRANTY

WARRANTY INFORMATION FOR DIGIPOWER PRODUCTS, A DMSION OF MIZCO INTERNATIONAL INC.


We warrant all DigiPower branded products against defects in material and workmanship for one year from the original date of purchase. At our option, we shall repair or replace the defective unit covered by this warranty. Please retain the dated sales receipt as evidence of the date of purchase in order to obtain any warranty service. This warranty is void if the product has been handled or used in any mariner which is Inconsistent wit the instructions accompanying the product or the intended use of the product. This warranty does not cover any damage due to accident, misuse, abuse, or negligence. This warranty does not extend to equipment used with the product This warranty is veld only if the product is used on a compatible device as specified on or attached to the product package. To verify compatibility, please check the product package for details or visit [www.DigiPowerSoMions.com](http://www.DigiPowerSoMions.com)

Repair or replacement, as provided under this warranty, is your exclusive remedy. We shall not be liable for any incidental or consequential damages. DigiPower hereby expressly disclaims any ard all implied warranties of merchantability and fitness for a particular purpose.

Some stater/countries do not allow the exclusion or limitation of incidental or consequential damages, so the above limitation or exclusion may not apply to you. Some states/countries do not allow limitations on implied warranties, so the above limitation may not apply to you. This warranty gives you specific legal rights, and you may also have other rights that vary from state to state and country to country.



## Documents / Resources

	<a href="#">digipower WPC-PB-MS10 Magsafe Compatible Powerbank</a> [pdf] User Guide RZO-WPCPBMS10, RZOWPCPBMS10, WPC-PB-MS10, WPC-PB-MS10 Magsafe Compatible Powerbank, Magsafe Compatible Powerbank, Compatible Powerbank, Powerbank
---	--