



## **digipower RF-REFUEL-10 Actionpack Rechargeable Battery User Guide**

[Home](#) » [digipower](#) » digipower RF-REFUEL-10 Actionpack Rechargeable Battery User Guide 



**Item No. RF-REFUEL-10  
USER GUIDE**



**ACTIONPACK RECHARGEABLE BATTERY**  
High capacity power for  
GoPro® HERO10 Black, HERO9 Black

**Contents**

- [1 PREPARING THE CAMERA FOR USE WITH THE ACTIONPACK](#)
- [2 USING THE ACTIONPACK IN 4 EASY STEPS](#)
- [3 CHARGING THE ACTIONPACK](#)
- [4 CHARGING STATUS INDICATOR](#)
- [5 BATTERY LEVEL INDICATOR](#)
- [6 CHECKING THE BATTERY CHARGE LEVEL](#)
- [7 APPROXIMATE USE TIME FOR ACTIONPACK RF-REFUEL-10](#)
- [8 USING THE GOPRO MOUNT](#)
- [9 ATTACHING ACCESSORIES TO THE COLD SHOE MOUNTS](#)
- [10 IMPORTANT NOTES ABOUT THE ACTIONPACK RF-REFUEL-10](#)
- [11 PASS THRU POWER](#)
- [12 REMOVING YOUR CAMERA FROM THE ACTIONPACK CASE AFTER IT HAS BEEN IN WATER](#)
- [13 CARE OF THE ACTIONPACK EXTENDED BATTERY](#)
- [14 ACTIONPACK RF-REFUEL-10](#)
- [15 WARRANTY INFORMATION FOR DIGIPOWER PRODUCTS, A DIVISION OF MIZCO INTERNATIONAL, INC.](#)
- [16 Documents / Resources](#)
  - [16.1 References](#)
- [17 Related Posts](#)

**PREPARING THE CAMERA FOR USE WITH THE ACTIONPACK**

It is necessary to remove the USB door so the camera can connect to the ActionPack.  
The USB door is designed to be safely removed and reinstalled on the camera as needed.

1. Open the USB door on the left side of the camera.
2. With the door open at a 90 degree angle to the camera body gently pull downward at a 45 degree angle to remove the door.
3. Keep the door in a safe place, you will need this when not using the ActionPack on the camera.



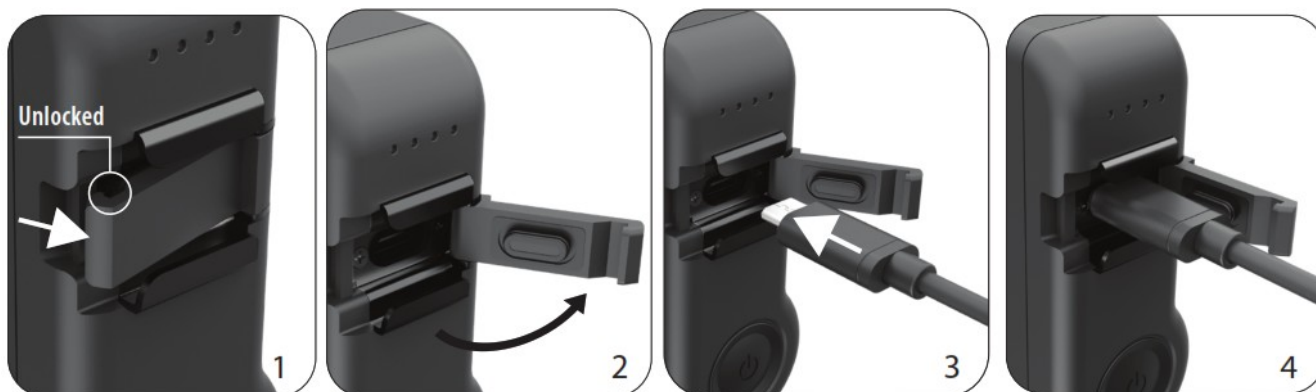
## USING THE ACTIONPACK IN 4 EASY STEPS

1. Open the Action Pack housing by pressing up on the security clip (the security clip is found on the right side of the ActionPack).
2. Lift the pivoting frame up and to the left so you can install the GoPro camera.
3. Slide the GoPro camera to the left so that it FIRMLY connects to the USB-C plug on the Action Pack, close the housing.
4. Press in on the side door while latching the case.
5. Secure the case latch. IT IS VERY IMPORTANT TO PROPERLY LATCH THE CASING OR THE PRODUCT WILL NOT BE WATERPROOF.



## CHARGING THE ACTIONPACK

1. The USB-C charging port is in the middle of the shoe mount on the left side of the Action Pack.
2. Open the USB port cover by pulling upward to unlatch it. Using a coin will make it easier to open.
3. Insert the included USB-C charging cable.
4. With the cable inserted, plug the other end into a USB power source (not included).



5. For fastest charging use a 2 Amp (10 Watt) power supply (not included).
6. If the camera is installed in the Action Pack the camera's internal battery will also charge.
7. Press and hold the power button for 2 seconds to turn the Action Pack on. Press and hold for 2 seconds to turn it off.

**NOTE:** IT IS VERY IMPORTANT TO PROPERLY LOCK THE USB-C DOOR AFTER CHARGING OR THE PRODUCT WILL NOT BE WATERPROOF.

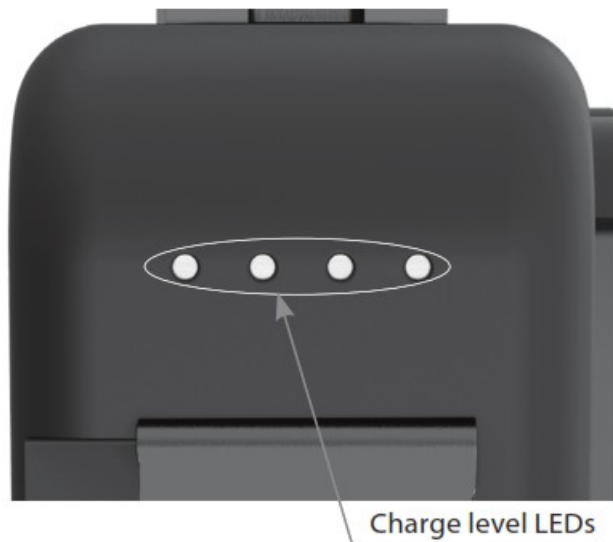


## CHARGING STATUS INDICATOR

STATUS DISPLAY STATE	CHARGE STATUS
One LED is blinking	Below 25%
One LED is on, next LED is blinking	25% – 50%
Two LEDs are on, next LED is blinking	50% – 75%
Three LEDs are on, last LED is blinking	75% – 100%
All four LEDs are on	Charging complete

When the Action Pack is fully charged, all 4 LEDs will remain lit.

When the camera is installed in the Action Pack, both the Action Pack and the internal camera battery will charge at the same time.



The percent of charge by LED is an approximation, it is best to wait until all four LEDs are lit, the unit will be fully charged then.

## BATTERY LEVEL INDICATOR

STATUS DISPLAY STATE	BATTERY LEVEL
One LED is blinking	Very low, recharge soon
One LED is on	Below 25%
Two LEDs are on	25% – 50%
Three LEDs are on	50% – 75%
All four LEDs are on	75% – 100%

## CHECKING THE BATTERY CHARGE LEVEL



To check the charge level tap the power button.

## TIME TO CHARGE (ASSUMING THE CAMERA BATTERY AND ACTIONPACK ARE COMPLETELY DRAINED)

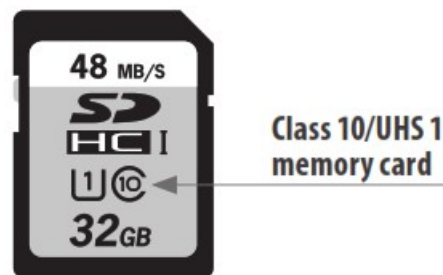
Power supply ( not included)	Camera installed	Camera not installed
1 Amp (5 Watt)	Camera charges then Action Pack, total charge time approximately 8 hours 30 minutes	Action Pack charge time 6 hours
2 Amp (10 Watt)	Camera charges then Action Pack, total charge time approximately 4 hours 30 minutes	Action Pack charge t

## APPROXIMATE USE TIME FOR ACTIONPACK RF-REFUEL-10

### RF-REFUEL-10

RESOLUTION	WiFi STATUS	TOTAL TIME
1080P/24fps	OFF	9 HOURS
4K/30fps	OFF	5 HOURS
5K/30fps	OFF	4 HOURS

A Class 10/UHS1 memory card is required for best performance.



### USING THE GOPRO MOUNT

- Attach the mounting plate to the bottom of the Action Pack by turning the two knurled knobs clockwise. Do not overtighten.
- Connect your favorite GoPro accessories as you normally would.



### ATTACHING ACCESSORIES TO THE COLD SHOE MOUNTS

- There are two cold shoes on the Action pack frame
- You can attach a light, microphone or other camera accessory that uses a cold shoe mount
- Slide the accessory onto the cold shoe, turn the locking wheel on the base of the accessory clockwise to secure it.

**NOTE:** These are cold shoe mounts, there is no electrical connection to the camera.



## IMPORTANT NOTES ABOUT THE ACTIONPACK RF-REFUEL-10

- The LEDs on the Action Pack remain on when the Action Pack is powered on. It will tell you the level of charge remaining in the Action Pack by the number of LEDs lit.
- The Action Pack provides power to the camera battery which then powers the camera. The camera's battery level will not begin to go down until the Action Pack battery has been fully depleted.
- With the Action Pack powered on and the camera in standby or playback modes the battery display on the camera will show charging.
- With the Action Pack powered on and the camera in record mode the battery display on the camera will not show charging.
- When you are done using the Action Pack power it off by pressing the power button for 2 seconds. If you do not press the power button it will continue to provide power to the internal battery the same way a USB charger would provide power to your Smartphone.
- Turning on the Action Pack does not turn on the camera, use the camera's power button to turn it on.
- Turning off the Action Pack does not turn off the camera, use the camera's power button to turn it off.
- For proper functioning, it is necessary to have the internal camera battery installed while using the Action Pack.
- The Action Pack has been tested and approved to IEC standard IP68 for water and dust ingress. Lab testing done in a pressurized water tank for 2 hours' submersion, simulated 33ft/10m depth

## PASS THRU POWER

Pass thru power allows you to record indefinitely and keep your battery charged up at the same time.

1. Open the USB-C port door as noted on page 3 .
2. Connect the USB-C cable to a power source such as a USB car charger, wall charger, or power bank
3. You do not need to press the power button on the Action Pack, it starts working automatically.
4. Operate the camera as you normally would

## REMOVING YOUR CAMERA FROM THE ACTIONPACK CASE AFTER IT HAS BEEN IN WATER



1. Visually inspect the camera, dry off any residual water found before opening the case.
2. Unlatch the casing and pivot the frame away from the camera.
3. Remove the camera by sliding it out of the Action Pack frame.
4. Visually look for any water around the USB-C port on the camera; dry it off immediately.

## CARE OF THE ACTIONPACK EXTENDED BATTERY

- 1. Before using, especially if you plan to use it in water, visually inspect the ActionPack for signs of dust, dirt, or anything that may affect its ability to maintain a waterproof seal.
- 2. If the Action Pack is used in salt water clean the areas around the USB-C port with a damp clean (lint free) cloth then dry thoroughly.
- DO NOT IMMERSE THE ACTIONPACK IN WATER WITHOUT THE CAMERA IN PLACE AND THE LATCH SECURED OR IT CAN BE PERMANENTLY DAMAGED.

## ACTIONPACK RF-REFUEL-10

### SPECIFICATIONS:

- 5000mAh (18Wh) Lithium Ion battery
- USB-C Input: 5V DC, 2A(10W)
- USB-C Output: 5V DC,2A (10W) Max
- Battery Output: 3.6V DC
- Weight and dims: 6.2oz | 4.3" x 3.5" x 1.4" 177g | 110mm x 89mm x 35mm



We want you to have the best possible experience when using our products, and we're ready to help you with any questions or problems. Technical support can be reached at [techsupport@mizco.com](mailto:techsupport@mizco.com). Please allow up to one business day for email replies.

## WARRANTY INFORMATION FOR DIGIPOWER PRODUCTS, A DIVISION OF MIZCO INTERNATIONAL, INC.

Mizco's responsibility with regard to this warranty shall be limited solely to the repair or replacement, at its option, of any product that fails during normal consumer use for a period of two years from the date of purchase. This warranty does not extend to damage or failure resulting from misuse, neglect, accident, alteration, abuse, or improper installation or maintenance. This warranty does not extend to equipment used with the product. If at any time during the two years period following your purchase the product fails due to defects in materials or workmanship, please contact us at 800-838-3200 between the hours of 9AM and 6PM M-F Eastern time, to obtain an RMA number and return shipping instructions. For fastest service, have a copy of your product receipt available with the model number, date, and location of purchase. This warranty gives you specific legal rights, and you may have other rights that may vary in certain states or provinces.

FCC STATEMENT: This equipment has been tested and found to comply with the limits for a Class B digital device, pursuant to Part 15 of the FCC Rules. These limits are designed to provide reasonable protection against harmful interference in a residential installation.

This equipment generates uses and can radiate radio frequency energy and, if not installed and used in



accordance with the instructions, may cause harmful interference to radio communications. However, there is no guarantee that interference will not occur in a particular installation. If this equipment does cause harmful interference to radio or television reception, which can be determined by turning the equipment off and on, the user is encouraged to try to correct the interference by one or more of the following measures:

- Reorient or relocate the receiving antenna.
- Increase the separation between the equipment and receiver.
- Connect the equipment into an outlet on a circuit different from that to which the receiver is connected.
- Consult the dealer or an experienced radio/ TV technician for help.

Operation is subject to the following two conditions:

1. this device may not cause harmful interference, and
2. this device must accept any interference received, including interference that may cause undesired operation.

**CAUTION:** Changes or modifications not expressly approved by the party responsible for compliance could void the user's authority to operate the equipment IC CAN IECS-003/NMB-003



Visit: [www.digipowersolutions.com](http://www.digipowersolutions.com)


Mizco International, Inc. Cranford, New Jersey 07016.

All rights reserved.


email: [digipowersolutions@mizco.com](mailto:digipowersolutions@mizco.com)

DigiPower is a registered trademark of  
Mizco International, Inc.

## Documents / Resources

	<a href="#">digipower RF-REFUEL-10 Actionpack Rechargeable Battery</a> [pdf] User Guide GoPro HER010 Black, HER09 Black, RF-REFUEL-10, RF-REFUEL-10 Actionpack Rechargeable Battery, RF-REFUEL-10 Rechargeable Battery, Actionpack Rechargeable Battery, Rechargeable Battery, Actionpack Battery, Actionpack
---	--

## References

-  [.co.com Domain Name Registry](#)
-  [Digipower](#)