



DIGILOG ELECTRONICS 310700 Waterproof LED Floodlight LEDs Light Instruction Manual

[Home](#) » [Digilog Electronics](#) » **DIGILOG ELECTRONICS 310700 Waterproof LED Floodlight LEDs Light Instruction Manual** 

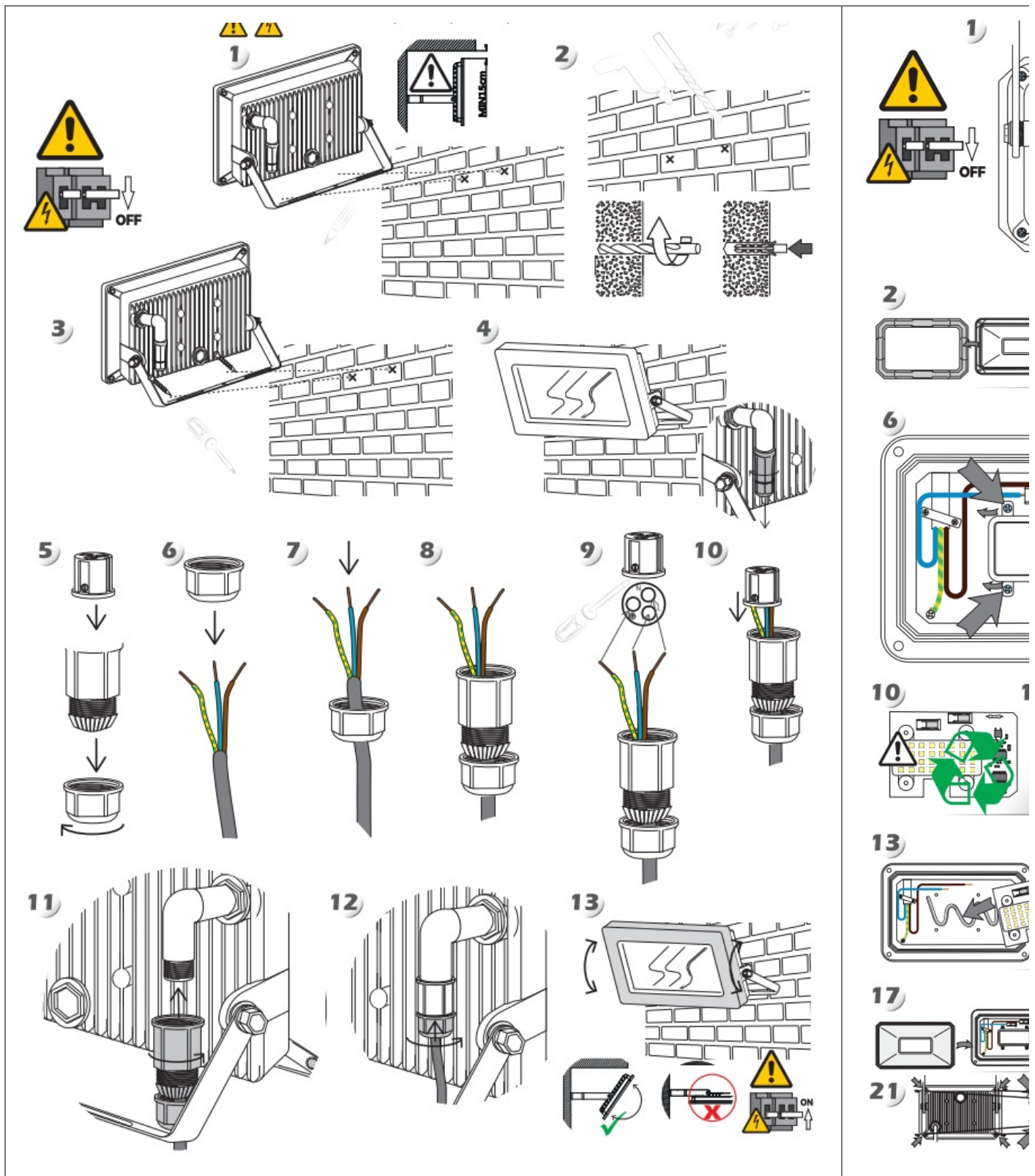


**Waterproof LED Floodlight LEDs Light
Instruction Manual**

Contents

- [1 310700 Waterproof LED Floodlight LEDs Light](#)
- [2 Cleaning and Maintenance](#)
- [3 Documents / Resources](#)
- [4 Related Posts](#)

310700 Waterproof LED Floodlight LEDs Light



Safety warning!

Ensure you have fully read and understood the instructions in this document before you install or use the product following the installation/wire diagram (when applicable). Keep this document for future reference and only use the product as described in this document. Any other use of the product than described in this manual may damage the product or cause injury to the user (e.g. due to a short circuit, fire, or electric shock). Disconnect the product from the power source if problems occur. Do not drop the product and avoid bumping. Do not use the product if a part is damaged or defective. Replace a damaged defective product immediately. When a non-standard consumer (power) installation is required this should be performed by a qualified technician to reduce the risk of an electric shock. Make sure the product is sufficiently ventilated during use. Never cover an electrical (LED) device during usage since it can generate heat causing damage. Besides LED can be extremely bright and may cause serious eye damage so don't stare at it directly. When a product is meant for indoor and/or outdoor use only, this will be mentioned on the product/parts or in the manual. Keep the product out of reach of children or

animals.

Cleaning and Maintenance

Warning!

Do not use cleaning solvents or abrasives. Do not clean the inside of the device. Do not attempt to repair the device when the device does not operate correctly, replace it. Clean the outside of the device using a soft damp cloth (don't use a microfiber cloth).

Support

If you need further help or have comments or suggestions please visit www.shada.nl/linkontact



Caution! Risk of electric shock.

This product contains a light source of energy efficiency class E.

NOTE: Opening the device voids the warranty



The item should be disposed of separately from household waste. The item should be handed in for recycling in accordance with local environmental regulations for waste disposal. By separating a marked item from household waste, you will help reduce the volume of waste sent to incinerators or land-fill and minimize any potential negative impact on human health and the environment.



This product carries the CE mark, which confirms this. the product meets EU safety, health, and environmental protection requirements.

D.O.C.: shada.nl/p/310700

DIGILOG



shada.nl/p/310700

SHRDR Molenmakershoek 28, NL-7328 JK APELDOORN

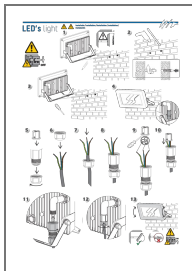
The Netherlands www.shada.nl



WEEE: NL: 3505,

WEEE: DU 3505, DE: 37281017, AT: 40133, ES: 7020

Documents / Resources



[DIGILOG ELECTRONICS 310700 Waterproof LED Floodlight LEDs Light](#) [pdf] Instruction Manual

310700, Waterproof LED Floodlight LEDs Light, 310700 Waterproof LED Floodlight LEDs Light, LED Floodlight LEDs Light, Floodlight LEDs Light, LEDs Light, Light