



## DIGI EX50 5G Cellular Router Instruction Manual

[Home](#) » [DIGI](#) » DIGI EX50 5G Cellular Router Instruction Manual 

### Contents

- [1 DIGI EX50 5G Cellular Router](#)
- [2 INSTRUCTIONS](#)
- [3 Meet the Digi 5G line-up](#)
  - [3.1 5G-Native Solutions](#)
  - [3.2 5G-Ready Solutions](#)
- [4 Digi Remote Manager](#)
- [5 5G Wireless Use Cases](#)
- [6 Documents / Resources](#)
- [7 Related Posts](#)



**DIGI EX50 5G Cellular Router**



## INSTRUCTIONS

The wait is over! Digi's new 5G-native and 5G-ready products are available now — enabling you to tap into the unprecedented speed and throughput of the next generation of wireless mobile communication technology. 5G provides dramatically lower latency and higher data speeds than previous generations of wireless connectivity. It offers virtually unlimited use cases and practical benefits to consumers, public sector organizations and enterprises in every industry.

With older network infrastructure shutting down, and 2G and 3G installations at end-of-life, the transition to 5G is well underway. So now is the time to map out a migration plan for your systems and applications.

Digi can help. Our 5G-native and 5G-ready solutions — all with 4G failover — ensure that you will have optimal connectivity both today and tomorrow. Future proof your infrastructure with a complete, secure solution, including configuration, management, remote out-of-band access and security monitoring.

## Meet the Digi 5G line-up

### 5G-Native Solutions

#### Digi EX50 5G

Digi EX50 is a compact, all-in-one, enterprise-grade 5G cellular router with Wi-Fi 6. Digi EX50 5G features an extended temperature range of -20 °C to +70 °C, to provide fast, reliable primary or backup connectivity, even in the harshest environments.



### **Digi TX64 5G**

The fast uplink speeds of Digi TX64 5G make it ideal for demanding transportation and mobile environments. Digi TX64 5G provides true industrial grade routing, security, and firewall — with integrated VPN and reliable 4G failover for areas with limited 5G coverage.



### **5G-Ready Solutions**

#### **Digi EX15**

Digi EX15 offers Gigabit Ethernet and Wi-Fi connectivity for retailers and other organizations that cannot tolerate network downtime. Digi EX15 is also upgradeable with Digi CORE® LTE plug-in modems, to let users choose the speed that best meets their business requirements.



#### **Digi TX54**

Digi TX54 is a rugged cellular router for mission critical transportation, traffic management and industrial applications. Digi TX54 is certified FirstNet Ready™ for emergency response and extended primary applications and features dual Cat 12 LTE-Advanced modems.

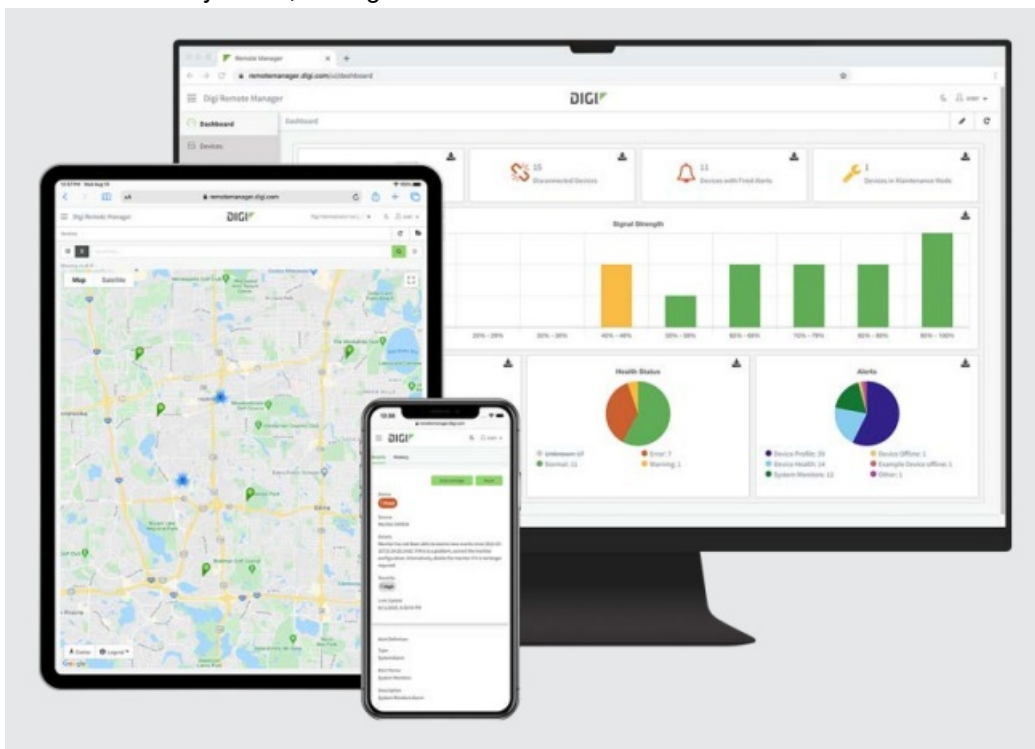


### **Digi Remote Manager**

#### **Monitor, Manage and Deploy Your 5G Solutions from Anywhere**

With Digi Remote Manager® you can access network performance data, perform mass firmware updates, edit

configurations and take advantage of out-of-band management capabilities. Digi Remote Manager lets you easily deploy, monitor and diagnose thousands of devices from a single point of command, transforming a multitude of dispersed IoT devices into a dynamic, intelligent network.



## 5G Wireless Use Cases

Organizations are discovering the many applications and use cases that are possible with 5G wireless connectivity. Key considerations in deploying 5G solutions include 5G availability in the proposed deployment area, application speed and throughput requirements, as well as cost.

### 5G use cases include:


- Streaming and high definition video for security cameras, 360- degree video and other data-intensive and image-intensive applications
- Enhanced mobile broadband for passengers in public transit
- Industrial automation applications utilizing machine learning and machine vision for electronic object recognition and decision-making
- Transportation applications requiring near instantaneous communications, including traffic management, connected vehicles and autonomous (self-driving) vehicles
- Professional flight simulation and training
- Precision medical applications
- Fixed Wireless Access (FWA)
- Digital transformation for supply chain and light industrial applications

### Digi Is Here to Help

The shift to 5G is accelerating, ushering in an era of higher bandwidth, lower latency and more cost-effective wireless networking. Digi International has been supporting enterprises, industries and public sector organizations around the world with IoT solutions for more than 35 years. We can help you find the right 5G or 4G networking solution at the right price, to ensure an optimal return on investment and a long, reliable service life. Contact us to discuss your needs

For more information, visit:  
[www.digi.com](http://www.digi.com)  
877-912-3444 | 952-912-3444  
© 2021 Digi International Inc. All rights reserved.

Documents / Resources

	<p><a href="#">DIGI EX50 5G Cellular Router</a> [pdf] Instruction Manual EX50, 5G Cellular Router, EX50 5G Cellular Router, Cellular Router, Router</p>
---	---

[Manuals+](#)