



# Digi-Pas DWL-4000XY Series 2-Axis Compact Sensor Module User Guide

[Home](#) » [Digi-Pas](#) » Digi-Pas DWL-4000XY Series 2-Axis Compact Sensor Module User Guide 

Digi-Pas DWL-4000XY Series 2-Axis Compact Sensor Module

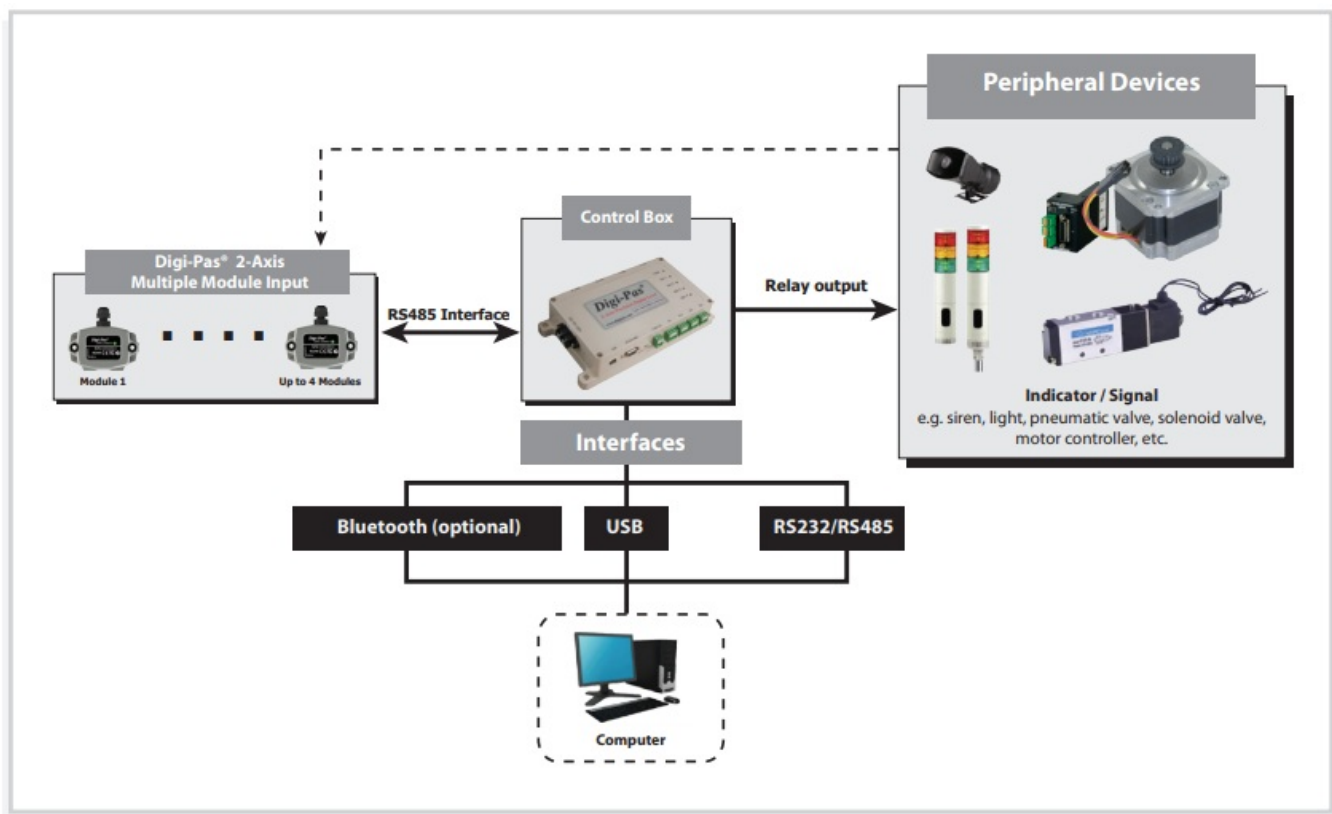
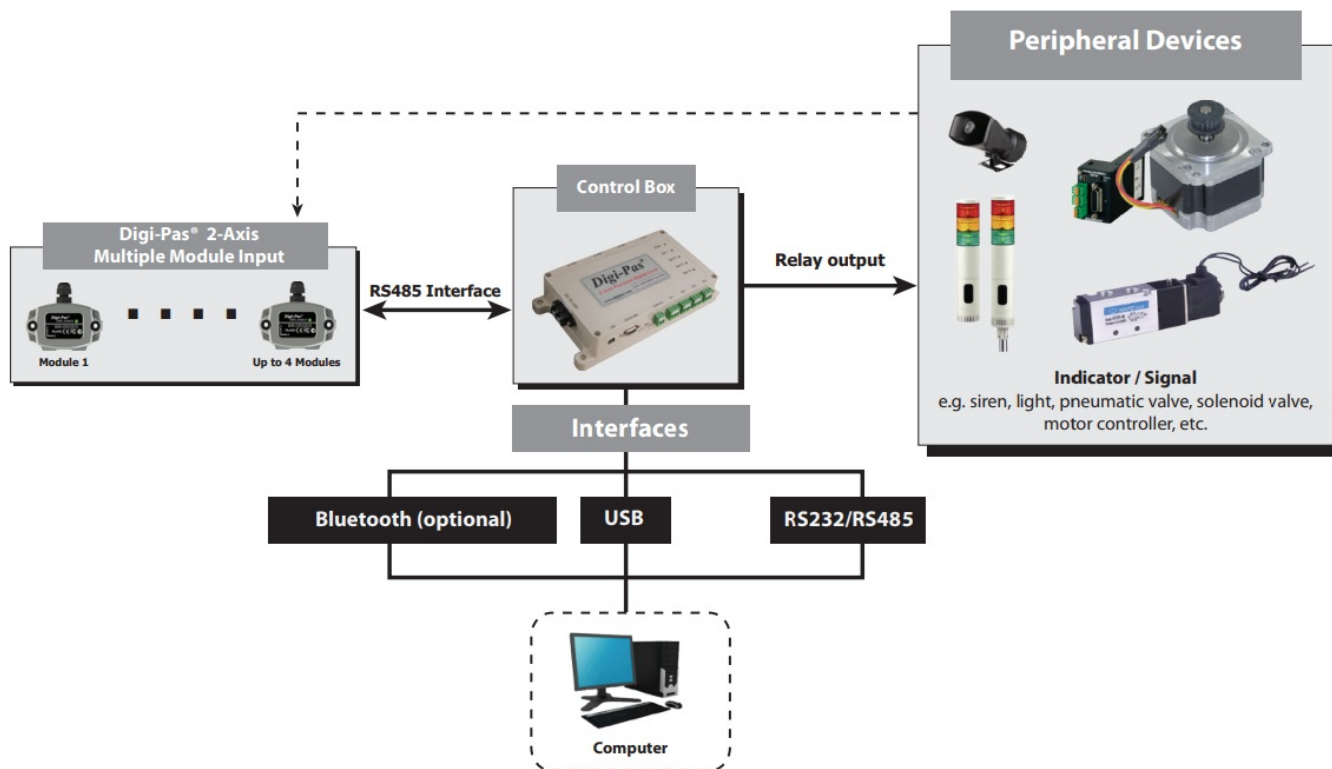


## Contents

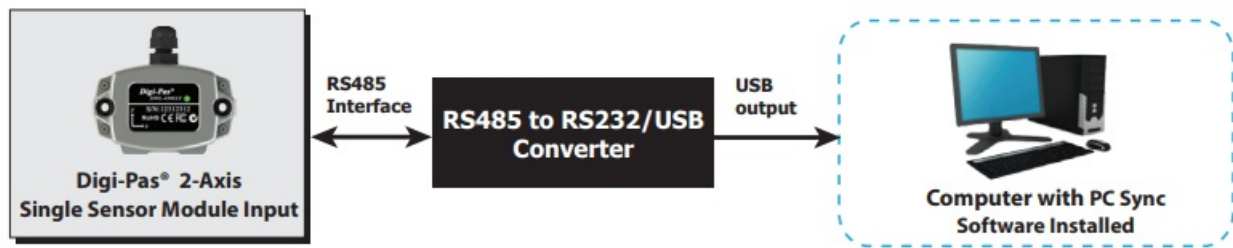
- 1 Application Diagram
  - 1.1 Software Features Comparison
  - 1.2 Sensor Module Dimension (mm)
- 2 PC System Requirements
- 3 Control Box & PC-Sync Pro Software.
- 4 2-Axis Compact Sensor Module
  - 4.1 Technical Specification
  - 4.2 ACCREDITATION
  - 4.3 Advantages of Digi-Pas 2-Axis Inclination Sensor Module
- 5 Sensor Module Overview
  - 5.1 Control Box Overview
- 6 Professional PC Sync Software
  - 6.1 PC Sync Software Features
- 7 Documents / Resources
  - 7.1 References
- 8 Related Posts

## Application Diagram

Application diagram 1- Multiple sensor using control box






Application diagram 2- Single Sensor connection

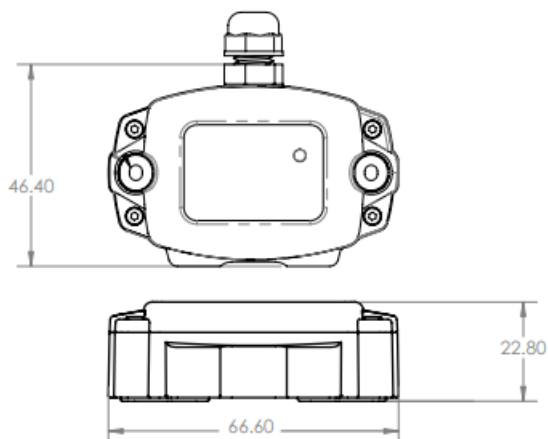


### Software Features Comparison

	Relay Contact Output		
	SMART 2D BUBBLE®		
	Single-Axis Angle Meter		
	Single-Axis Angle Graph		

	Dual-Axis Angle Graph		
	Vibrometer Graph		
	Self Calibration		

#### Sensor Module Dimension (mm)



#### PC System Requirements

**User's PC is recommended the following items to be installed for using the PC Sync Software:**

- Microsoft framework 3.5 for 32bit Windows OS or Microsoft framework 4.0 for 64bit Windows OS
- Windows 7 / Window 8 / Window 10

**The following item are required:**

At least 1 GB RAM, at least 100MB free disk space on hard drive, Microsoft Excel 2007 or above, USB 2.0 Port or RS232 Port, Bluetooth adapter (for Bluetooth connection)

**Applications :**



Offshore Platform



CNC



Robotic Arm



CMM



Industrial Printer



Satellite Dish



MRI Scanner

DIGIPAS TECHNOLOGIES INC.

[www.digipas.com](http://www.digipas.com)

200 Spectrum Center Drive, Suite 300,  
Irvine, CA 92618 U.S.A



Scan QR code or visit  
[www.digipas.com](http://www.digipas.com)

Control Box & PC-Sync Pro Software.



ACCURACY



DWL-4200XY	DWL-4500XY
$\pm 0.02^\circ$	00XY $\pm 0.002$
$\pm 350 \mu\text{m/M}$	$\pm 35 \mu\text{m/M}$
$\pm 0.004 \text{ in/ft}$	$\pm 0.0004 \text{ in/ft}$



**Digi-Pas® DWL-4200XY and DWL-4500XY are the most Compact & Cost Effective models yet of** our iconic 2-Axis Inclination Sensor Modules that are specifically designed to be integrated into machine/equipment/structure with less space needed. Come with the capability of real-time simultaneous monitoring of plane levelling position, 2D tilt angles, vibration measurement, and data logging function when used with the 'Plug and Play' PC Sync Software.

These compact intelligent modules are embedded with advanced MEMS sensor technology, developed for application engineers to ensure precision structural stability or angular position on any desired object.

These smart & compact inclination sensor modules are tough, durable, IP65 waterproof, have shock resistance, small footprint, and are enabled to communicate with external peripheral devices through various protocols such as USB, **RS232, RS485, & wireless Bluetooth.**

## 2-Axis Compact Sensor Module

### Technical Specification

Model	DWL-4200XY	DWL-4500XY
Measurement Range (Single Axis Mode)	0.00° to ± 90.00°	0.000° to ± 10.000°
Measurement Range (Dual Axis Mode)	0.00° to ± 15.00°	0.000° to ± 0.000°
Resolution	0.01° (175 µm/M or 0.002 in/ft)	0.001° (18 µm/M or 0.0002 in/ft)
Accuracy	± 0.02° at 0° to 2.00°; ± 0.04° at other angles	± 0.002° at 0° to 2.000°; ± 0.004° at other angles
Repeatability	± 0.01° (175 µm/M or 0.002 in/ft)	± 0.001° (18 µm/M or 0.0002 in/ft)
Cross Axis Error	Negligible (± 0.0025°)	Negligible (± 0.00025°)
Vibrometer (Relative g)	1.0	2.0
Response time	IOms (milliseconds)	SOOms (milliseconds)
Power Supply	9VDC	
IO communication protocols	RS485: 8 Data bits, no parity, 1 stop bits, 115200bps USB 2.0 or Wireless Bluetooth connectivity (optional)	
Sensor Module Waterproof Rating	IP65	
Sensor Module Base Material	Zinc Alloy	
Sensor Module Dimension (mm)	67(L) x 42(W) x 23(H)	
Sensor Module Weight (approx.)	400g	600g
Operating Temperature	-40° to +85°	

## ACCREDITATION

### Advantages of Digi-Pas 2-Axis Inclination Sensor Module

- **PLANAR & WIDE ANGLE RANGE MEASUREMENT**

Precision levelling and tilt angles measurement essentially involve simultaneous 2-dimensional planes rather than single-axis. Digi-Pas 2-axis

intelligent tilt sensor modules having high precision and wide measurement range are capable of providing real-time levelling & vibration readings that empower application engineers to continuously monitor machine/equipment/structure angular positional status precisely and speedily.

These small footprint MEMS driven 2-axis sensor modules effectively eliminate the limitations of using multiple single-axis sensors or bulky pendulum based sensors to achieve 2D levelling and planar angular measurements.

- **PROGRAMMABLE & USER-DEFINABLE SYSTEM**

Digi-Pas 2-axis tilt sensor module system is designed to be integrated into precision

machine/equipment/structure enabling application engineers to instantly access angular positional status



without the need for tedious and time-consuming programming.

The angular measurement system enables user-defined settings to activate any external connected peripheral devices at e

## Sensor Module Overview

- High accuracy of 2-axis angle/level measurement of  $0.02^\circ$  or  $0.002^\circ$  (depending on model)
- Built-in Vibrometer for real-time vibration measurement
- User-friendly Professional PC Sync Software to configure the tilt sensor modules (OPTIONAL)

## Control Box Overview

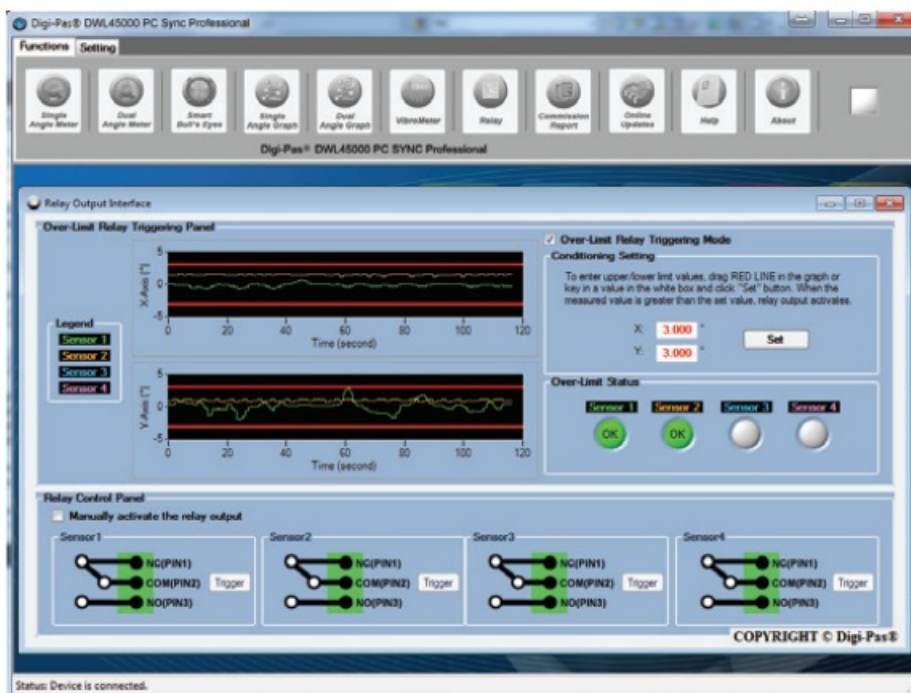
- **Programmable Relay Contacts Outputs:** Enables user-defined tilt angle/vibration range limits settings to trigger peripheral devices (e.g. siren/alarm, valve, motor, strobe lights, etc.)
- Multiple I/O communication protocols i.e. USB, RS232, RS485 & Wireless Bluetooth connectivity (optional)

## Professional PC Sync Software

The PC Sync Software is a 'plug & play' interface software (embedded with National Instrument software) that enables application engineers to remote access to multiple tilt sensor modules instantly via wireless Bluetooth connectivity/ USB cable/ RS232 for plane levelling, 2D tilt angles and vibration measurement. With the remote real-time data acquisition, logging & analysis features, the software offers a comprehensive solution without the need for tedious and time-consuming programming.

## PC Sync Software Features

### Relay Contact Output

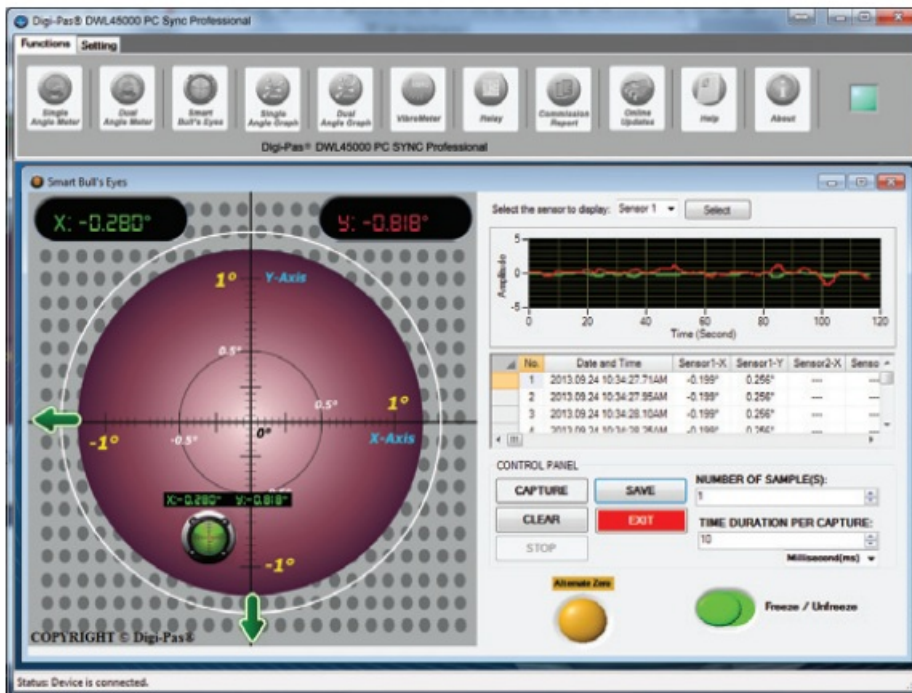


- Enables user to define pre-set condition to activate any connected peripheral devices e.g. siren/alarm, valve,

motor, strobe lights, etc.

- User-defined settings, real-time feedback of relay output status and tilt sensor module measurement readings can be seen at a glance on PC screen

## SMART 2D BUBBLE



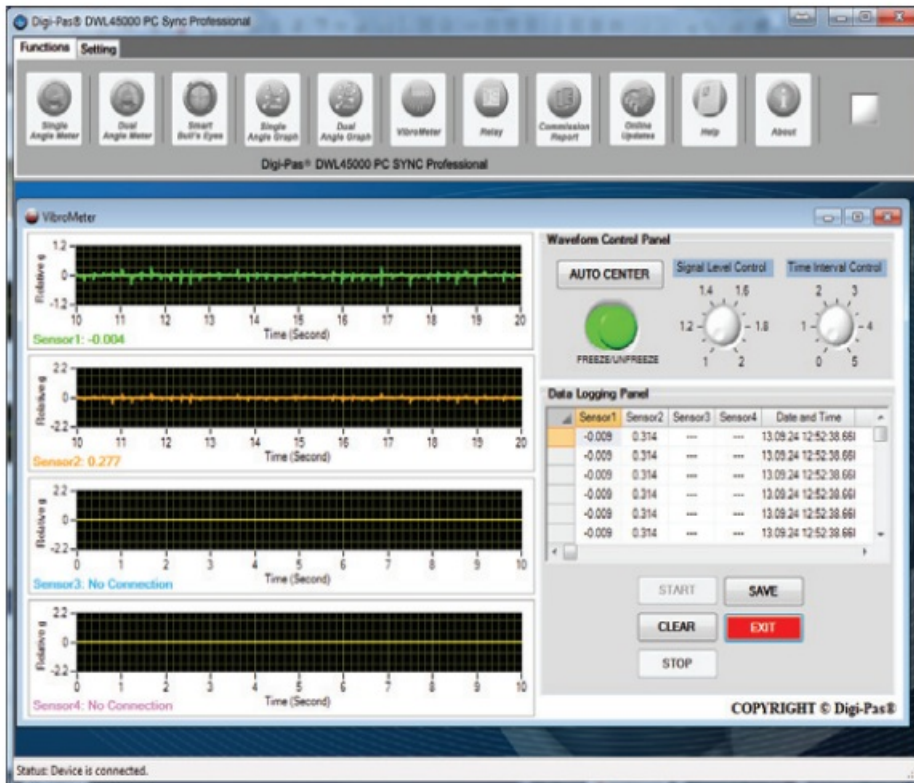
- View and record real-time 2-axis angles readings from a selected tilt sensor module
- Simultaneous display of graphical bull's eye (with auto range feature) and numeric formats
- Plane surface's elevation point clearly indicated by Smart 2D Bubble

## Single-Axis & Dual-Axis Angle Graphs



- Distinctive line graph display and numerical readings of angle/levelling measurement from multiple tilt sensor modules
- Enables identification and comparison of real-time results among multiple connected tilt sensor modules
- Enables data saving in Excel format

## VibroMeter Graph



- Numeric and graphical display of vibration magnitude and pattern/graph for effective vibration conditions assessment
- Simultaneous display of Vibrographs for multiple operating tilt sensor modules
- Fast sampling rate at 10ms (milliseconds) per data capture

## Single-Axis Angle Meter



- Graphical and numerical display for real-time single-axis or dual-axis angle readings of multiple tilt sensor modules
- Large, easy-to-read display with units in degree(°), mm/M or In/Ft

### Online Retailers



Digi-Pas® USA (Americas)  
DigiPas Technologies Inc.  
[info@digipas.com](mailto:info@digipas.com)



Digi-Pas® Singapore  
JSB Tech Pte Ltd  
[info@digipas.com](mailto:info@digipas.com)



Digi-Pas® UK (Europe)  
Tarax Technology Ltd  
[info@digipas.co.uk](mailto:info@digipas.co.uk)



Digi-Pas® Japan  
JSB Tech Japan Co., Ltd  
[info@digipas.co.jp](mailto:info@digipas.co.jp)



Digi-Pas® Germany (Europe)  
[info@digipas.de](mailto:info@digipas.de)

### Documents / Resources



[Digi-Pas DWL-4000XY Series 2-Axis Compact Sensor Module](#) [pdf] User Guide  
DWL-4000XY Series 2-Axis Compact Sensor Module, DWL-4000XY Series, 2-Axis Compact Sensor Module, Compact Sensor Module, Sensor Module

References

- [Digi-Pas Technologies](#)