



DiGiGiNG SOUND T002 Bluetooth Hearing Amplifier User Manual

[Home](#) » [DiGiGiNG SOUND](#) » DiGiGiNG SOUND T002 Bluetooth Hearing Amplifier User Manual

Contents [[hide](#)]

- 1 DiGiGiNG SOUND T002 Bluetooth Hearing Amplifier
- 2 TECHNICAL SPECIFICATION
- 3 CHECK YOUR HEARING AIDS
- 4 HOW TO WEAR YOUR HEARING AID
- 5 BLUETOOTH CONNECTION
- 6 OPERATION TOUCH COMMANDS
 - 6.1 POWER ON AND OFF
 - 6.2 VOLUME ADJUSTMENT
- 7 CHARGE YOUR HEARING AIDS CASE
- 8 CHARGER YOUR HEARING AIDS
- 9 TROUBLESHOOTING
- 10 CLEANING AND MAINTENANCE
- 11 MAINTENANCE
 - 11.1 STORAGE
- 12 CUSTOMER SERVICE
- 13 FCC STATEMENT
- 14 GET HELP SERVICE
- 15 Documents / Resources
- 16 Related Posts



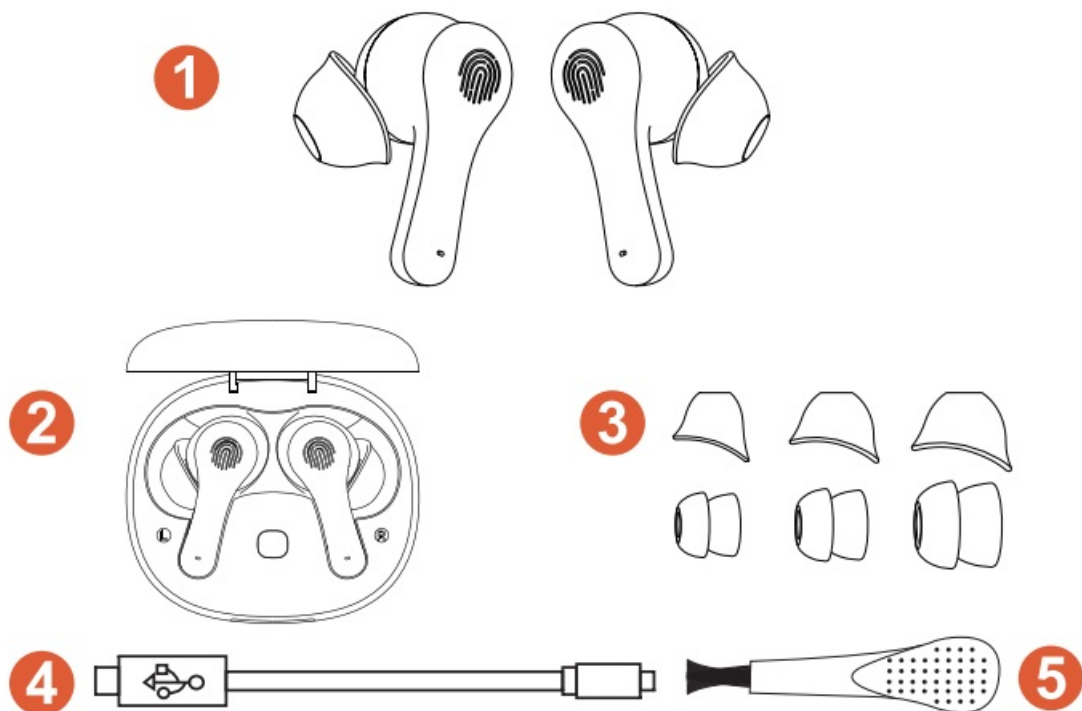
DiGiGiNG SOUND T002 Bluetooth Hearing Amplifier



TECHNICAL SPECIFICATION

Model	T002
Maximum saturation sound	$\leq 115\text{dB}+4\text{dB}$
FOG50 MAX Gain	$35\text{dB} \pm 4\text{dB}$
Equivalent input noise level	$\leq 25\text{dB}$
Frequency Response Range	250Hz-6500Hz
Total Harmonic Distortion	$\leq 3\%$
Work Time	Hearing Aid: ≥ 8 hours
	With Charging case: ≥ 25 hours
Standby Time	≥ 150 hours
Charge Time	Hearing Aid: 1.5 hours
	Charging case: 2.5 hours
Power Input	Hearing Aid: DC 3.7V/60mA
	Charging Case: DC 3.7V/500mA
Bluetooth Distance	$\geq 10\text{M}$
Waterproof Grade	IPX6

CHECK YOUR HEARING AIDS



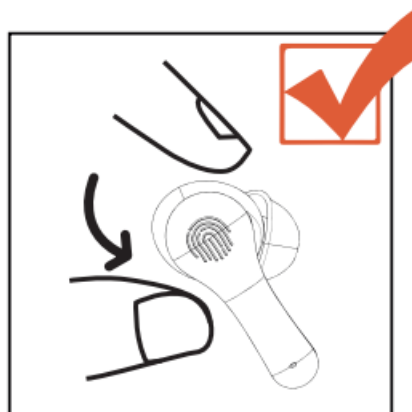
1. Hearing Aid
2. Charging case
3. Silicone dome (Extra six sets)
4. Type-c charging cable
5. Cleaning tool

HOW TO WEAR YOUR HEARING AID

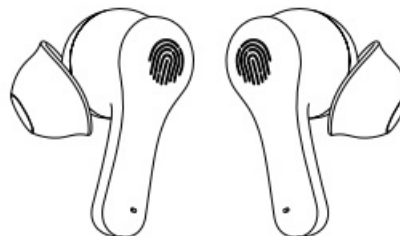
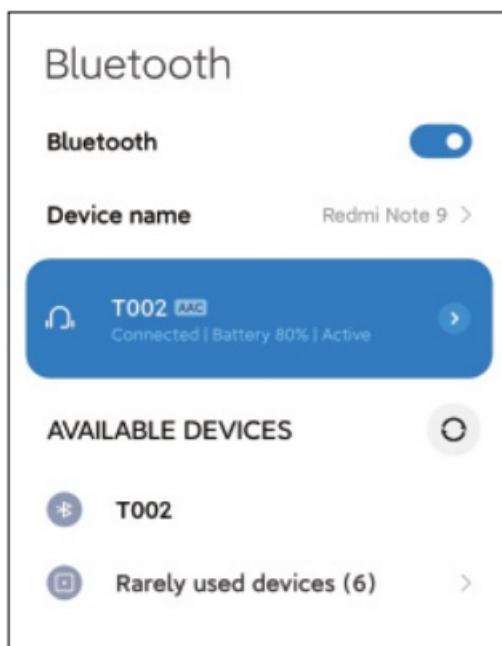
1. Choose the right size earbuds for your ears.



2. Hold the hearing aid with your index finger and thumb, with the little pore facing up.
3. Gently insert the hearing aid into the ear canal and rotate it backwards to stabilize the product in the ear.



BLUETOOTH CONNECTION



1. Turn on the device's Bluetooth search.
2. Open the charging case, the device will automatically enter Bluetooth pairing mode.
3. Select "T002" from the Bluetooth list of your device and click to connect.

Bluetooth only connects the first time you use it, after that it will automatically connect to your device's Bluetooth every time you use your hearing aid. Of course, when you use a new device, you will need to reconnect Bluetooth to your new device again.

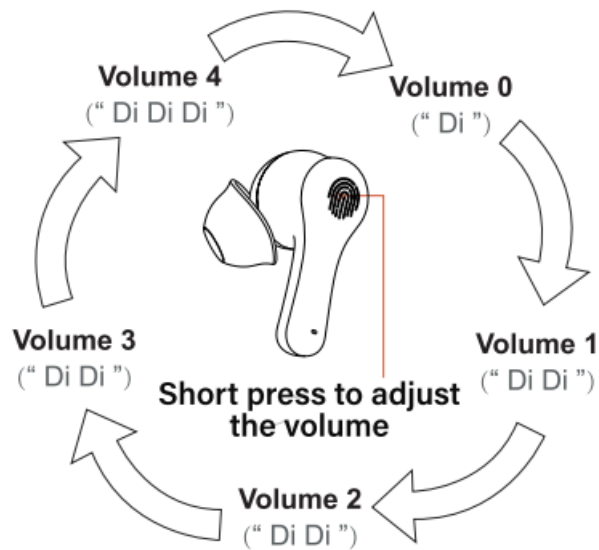
OPERATION TOUCH COMMANDS

POWER ON AND OFF

Turn on: Take out the hearing aid, it will turn on automatically. Or press and hold the touch button for 3S to turn on the hearing aid. Wait 10 seconds to enter hearing aid mode.

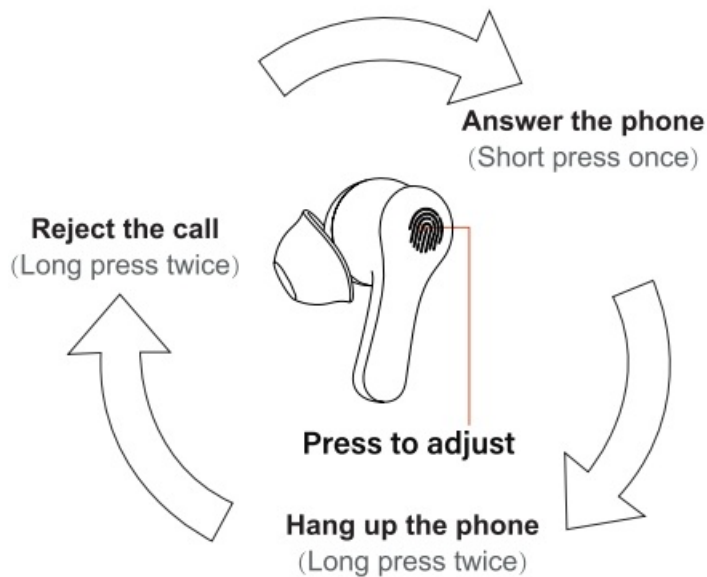
Turn off: Put the hearing aid back into the charging case, close the lid, and the hearing aid automatically turns off. Low battery will automatically shut down.

VOLUME ADJUSTMENT



- The volume goes from lowest (Volume 0) to highest (Volume 4), and then back to lowest (Volume 0)

PHONE CALL



SCENE MODE SWITCHING

Long press the left ear touch button for 3 seconds to switch the scene mode, as shown

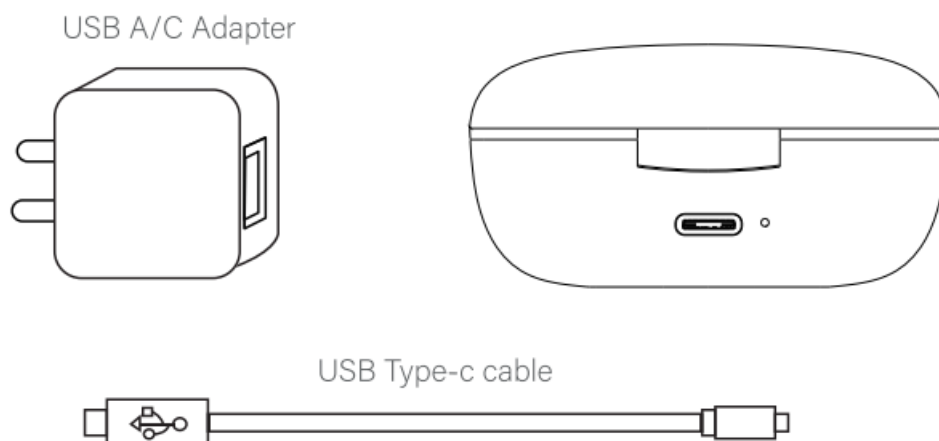
Modes	Applicable Scene	Indicating Sound
Mode 1	Default	"Default" sound
Mode 2	Noisy	"Noisy" sound
Mode 3	Watch TV	"Watch TV" sound
Mode 4	Silent	"Silent" sound

DENOISE MODE SWITCHING

Long press the right ear touch button for 3 seconds to switch the noise cancellation mode, as shown

Modes	Applicable Scene	Indicating Sound
Mode 1	Not denoising	"Not denoising" sound
Mode 2	Moderate denoising	"Moderate denoising" sound
Mode 3	Depth denoising	"Depth denoising" sound

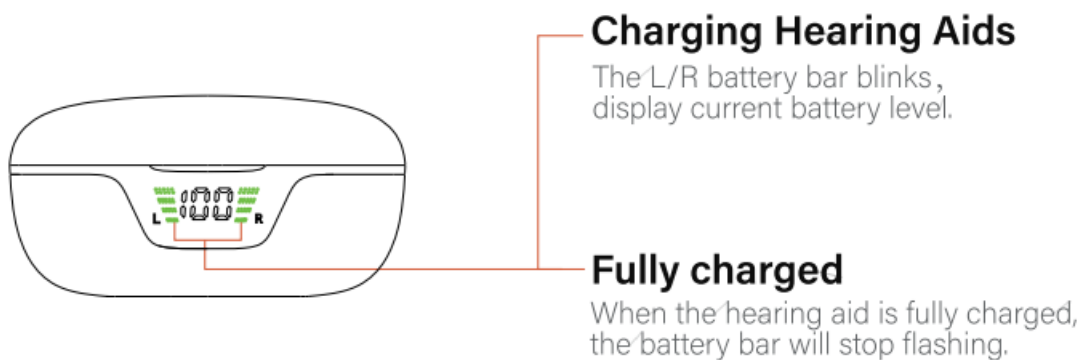
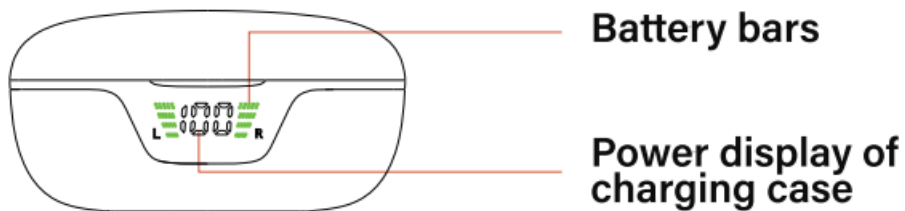
CHARGE YOUR HEARING AIDS CASE



1. Put your Hearing Aids into the charging case.
2. Connect the charging case to a USB A/C adapter with the provided USB Type-C cable and charge for 3 hours.
3. **Blinking Blue:** Low battery in charging compartment Red: Fully Charged
4. **Reset the Factory:** Press and hold the reset button of the charging compartment for 5 seconds.

- The charging time may vary slightly depending on your environment.

CHARGER YOUR HEARING AIDS



To charge your hearing aids, simply place them back into the charging case, which will charge both headphones 2-3 times.

- When the charging compartment is less than 10%, the power display starts flashing and cannot charge the hearing aids.

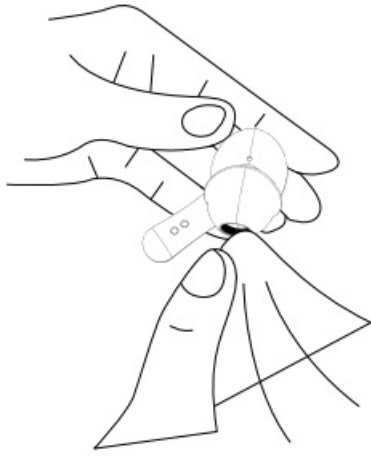
TROUBLESHOOTING

Problem	Possible Cause	Solution
Feedback	Not wearing hearing aids correctly.	Re-adjust device to make sure it's in correct position.
	Ear dome are not the right size.	Change a different size of dome that fits your ear.
No Sound/ Not Loud Enough/ Intermittent sound	Volume is set to be low.	Turn up the volume.
	Ear canal blocked with dirt.	Clean ear wax.
	The ear dome/ sound hole is dirty.	Clean or replace it with a new ear dome.
	Hearing change.	Contact your hearing professional.
Blinking blue LED light	Low battery	Insert your type-c cord to charge the case.
Hearing aids whistling in the charging case	Dead battery	Put the hearing aid into charging case, insert your type-c cord to charge the case.

CLEANING AND MAINTENANCE



1. Clean the silicone ear dome with the sound hole facing down.
2. Clean the dust screen with the cleaning brush. Remove the silicone ear dome if needed.



3. Clean the dust screen frequently or replace it time by time.
4. Store the hearing aid in the charging case.

CAUTIONS

CONTRAINDICATION

- The device is unsuitable in the following situations:
- Usage is prohibited for patients with chronic suppurative otitis media and congenital ear atresia.
- This hearing aid can only compensate patients with hearing impairment and do not have hearing therapeutic value.

WARNINGS

- Keep small swallowable accessories out of children's reach.
- Dropping, immersing in liquid, and accessing strong electromagnetic fields or overheating will damage hearing aids. If a hearing aid or accessories remain in the ear, please go to see a doctor as soon as possible, do not take it out by yourself.
- Warning not to use in explosive or oxygen-enriched atmospheres; it may damage the device
- Warning that only the intended person can use it; using a hearing aid designed for someone else may result in hearing damage.

NOTICE

- Please do not use it at high volume for a long time. Otherwise, it will injure your ear. If you feel uncomfortable, please stop using it.
- Please check the product every time before using it, and avoid wearing the earplug with foreign objects in ear canal. It will affect the sound amplifier
- Avoid shocking and dropping the product. Do not keep or use it in high humidity environments (such as the sauna room),
- Remove the hearing aid between swimming and shampooing.
- Do not use the product in a potential explosive or dangerous environment.
- Be careful with any unusual skin reactions. In some instances, wearing a hearing aid can cause an allergic reaction leading to it

- Chinese or rashes. If you notice any uncommon skin condition, stop wearing the hearing aids, and check with a medical specialist.
- Do not place the hearing aids near the magnetic objects.
- Be sure to take off the hearing aids when getting a diagnosis or treatment.
- Never pry the inside of the hearing aids with a needle or similar object; otherwise, it will damage the device.
- Do not use the hearing aids close to a cell phone, otherwise it may increase the noise and affect the sound quality.
- Please turn off the device when not in use. Please charge regularly, at least once every 6 months, to promote the best life of the battery.
- Please contact the MANUFACTURER: Any questions in setting up, using, or maintaining the hearing aid; To report unexpected operations or events.

MAINTENANCE

- We do not authorize any institution or individual to maintain and repair the product. If you suspect that the products have any issues please contact the manufacturer or distributor to handle them.
- The user must not attempt any repairs to the device or any of its accessories. Please contact the retailer for repair.
- Opening of the equipment by unauthorized agencies is not allowed and will terminate any warranty claim.
- **Warning:** No modification of this equipment is permitted!

STORAGE

- If you do not use it, turn off the hearing aid, and then put it into the storage case
- Do not place the device under the sunshine, high temperature, near heating equipment and moist environments or someplace, which maybe get in touch with fire or is vulnerable to vibration. Do not place your hearing aid in a hot car, and avoid places with high humidity such as bathrooms.
- Keep the device storage in following environmental ranges: 20-55° C, 95%RH, 700-1060h Pa.

CUSTOMER SERVICE

If you have any problem in the process of using Our products, please contact us in time. We are happy to help you with all your questions about our products. And we will get back to you within 24 hours.

There are four ways to contact us

1. Our customer service email: DiggingSoundAid@outlook.com
2. Our customer service whatsapp: +86 13823673781
3. Our Official Website: www.diggingsound.com
4. Enter our store that below the button "Add to cart" and find the button "Ask a question" which can also contact us directly.

We sincerely hope you can enjoy our products all the time!

FCC STATEMENT

The device has been evaluated to meet general RF exposure requirements. The device can be used in portable exposure conditions without restriction. The product is too small to place complete label information, so the label is placed in the user manual.

This device complies with Part 15 of the FCC Rules. Operation is subject to the following two conditions

1. This device may not cause harmful interference.
2. This device must accept any interference received, including interference that may cause undesired operation.

Warning: Changes or modifications not expressly approved by the party responsible for compliance could void the user's authority to operate the equipment.

NOTE: This equipment has been tested and found to comply with the limits for a Class B digital device, pursuant to Part 15 of the FCC Rules. These limits are designed to provide reasonable protection against harmful interference in a residential installation. This equipment generates and can radiate radio frequency energy and, if not installed and used in accordance with the instructions, may cause harmful interference to radio communications. However, there is no guarantee that interference will not occur in a particular installation. If this equipment does cause harmful interference to radio or television reception which can be determined by turning the equipment off and on, the user is encouraged to try to correct the interference by one or more of the following measures:


- Reorient or relocate the receiving antenna.
- Increase the separation between the equipment and receiver.
- Connect the equipment into an outlet on a circuit different from that to which the receiver is connected.
- Consult the dealer or an experienced radio/TV technician for help.

FCC ID: 2A909-T002

GET HELP SERVICE

- **After-sale E-Mail:** DiggingSoundAid@outlook.com
- **Website:** www.diggingsound.com
- **Whatsapp:** +86 13823673781

Documents / Resources

	DiGGiNG SOUND T002 Bluetooth Hearing Amplifier [pdf] User Manual T002, 2A909-T002, 2A909T002, T002 Bluetooth Hearing Amplifier, Hearing Amplifier, T002 Bluetooth Amplifier, Bluetooth Amplifier, Amplifier, T002
---	--