



DIFFMELY X200 Black Business Aromatherapy Scent Collection Diffuser User Manual

[Home](#) » [DIFFMELY](#) » DIFFMELY X200 Black Business Aromatherapy Scent Collection Diffuser User Manual 

DIFFMELY X200 Black Business Aromatherapy Scent Collection Diffuser



Contents

[1 Bluetooth User Manual](#)

[2 Documents / Resources](#)

[2.1 References](#)

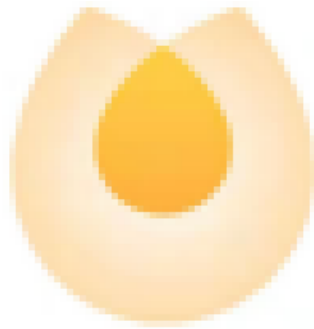
[3 Related Posts](#)

Bluetooth User Manual

1. Scan the QR code of the top left corner or search the "Scent Master" app in the app store to download and install.



Download app



Scent Master

Stand Alone Mode ✖

Online Mode 🌐

2. Open the app homepage interface, click [Stand Alone Mode] **(as shown in Figure 1)**
3. Click the search device to pop up the password input dialog box and enter the initial password 9999 **(as shown in Figure 2)**

Stand Alone Mode

YGZK-XXJ-TJ-2C7650CE22

Refresh

Devices found

YGZK-XXJ-TJ-2C7650CE22

9999

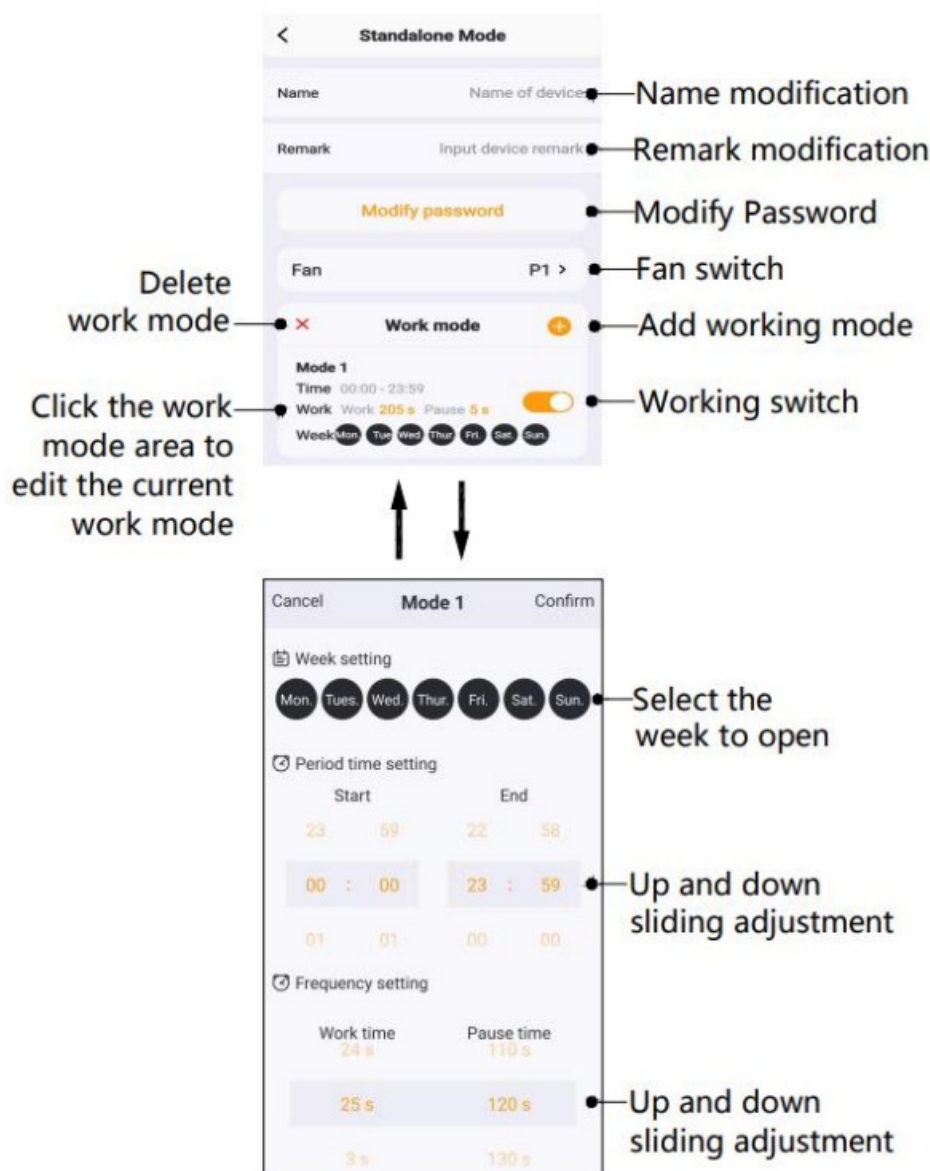
☒ Remember password

CONFIRM

Initial password 9999


If you forget the modified password, you can press the restore button on the device for 5 seconds and restore the initial password 9999 after hearing "didi" twice

4. Working settings



DIFFMELY

Documents / Resources

<p>DIFFMELY</p>  <p>Download app</p>	<p>DIFFMELY X200 Black Business Aromatherapy Scent Collection Diffuser [pdf] User Manual</p> <p>X200 Black Business Aromatherapy Scent Collection Diffuser, X200 Black, Business Aromatherapy Scent Collection Diffuser, Aromatherapy Scent Collection Diffuser, Scent Collection Diffuser, Collection Diffuser, Diffuser</p>
---	---

References

- [User Manual](#)

[Manuals+](#), [Privacy Policy](#)

This website is an independent publication and is neither affiliated with nor endorsed by any of the trademark owners. The "Bluetooth®" word mark and logos are registered trademarks owned by Bluetooth SIG, Inc. The "Wi-Fi®" word mark and logos are registered trademarks owned by the Wi-Fi Alliance. Any use of these marks on this website does not imply any affiliation with or endorsement.