

SON
perature
ecorder



Contents [[hide](#)]

- [1 DICKSON SL4 Temperature Chart Recorder](#)
- [2 Specifications](#)
- [3 GETTING STARTED](#)
- [4 CHART REPLACEMENT](#)
- [5 FAQs](#)
- [6 Documents / Resources](#)
 - [6.1 References](#)

DICKSON

DICKSON SL4 Temperature Chart Recorder



DICKSON USER MANUAL & PRODUCT GUIDE

SL4 4" Temperature Chart Recorder

Contact Information

- Need additional support?
- Website: www.DicksonData.com
- Telephone: 630.543.3747
- Email: support@dicksondata.com
- Address: 930 S. Westwood Avenue, Addison, IL 60101

Important

Dickson Chart Recorders are precision instruments. Use only the charts and pens specified for your Dickson brand recorder. Use of other manufacturers' charts or pens can impair the accuracy of the recording system.

To Begin Operation

1. Make sure the correct chart is installed.
2. SL4 chart recorders have a 1-year battery installed.
3. Set the chart to the correct time by turning the chart hub until the correct time is referenced by the time indicator.
4. Replace protective pen cap.

Battery Replacement

- Remove old battery.
- Insert new battery with the positive (+) side facing up.

Chart Not Rotating

- Make sure the chart hub is properly secured.
- Ensure the chart is not upside down.

Pen Does Not Mark Display

- Make sure pen tip is in contact with the chart.

- Ensure the pen is not dried out.

Specifications

Feature	Description
Chart Size	4 inches
Battery Life	1 year

Factory Service & Returns

Please contact Dickson Customer Service at 630.543.3747 for a Return Authorization Number before returning any instrument. Dickson is not responsible for any damage or loss caused by shipping.

GETTING STARTED

IMPORTANT

Dickson Chart Recorder accuracy specifications are only valid with the use of authentic Dickson brand charts and pens. The specifications for chart printing, die cutting and paper absorption rates, and the complementary bleed rate specifications of pens are critical factors in determining system accuracy.

TO BEGIN OPERATION

This recorder comes with 1 AA battery installed.

1. Set chart rotation: the switch is located in the battery compartment. Unscrew the battery door. Make sure the switch is set to the correct chart rotation speed.
2. Replace the chart paper
3. Set time by inserting a coin into the chart hub and turning it clockwise until the current hour is referenced to the time indicator (time indicator is directly to the right and below the pen tip).
4. Remove protective pen cap

BATTERY REPLACEMENT

- The battery compartment is located on the back of the unit
- The recorder uses a standard AA battery for up to two years of battery life
- Insert new battery with positive end up

CHART NOT ROTATING

- Make sure the chart paper is not ripped in the center around the Chart Hub
- Make sure the chart is not hung up or restricted
- Make sure there is a good battery being used and it is installed correctly

PEN DOES NOT MATCH DISPLAY

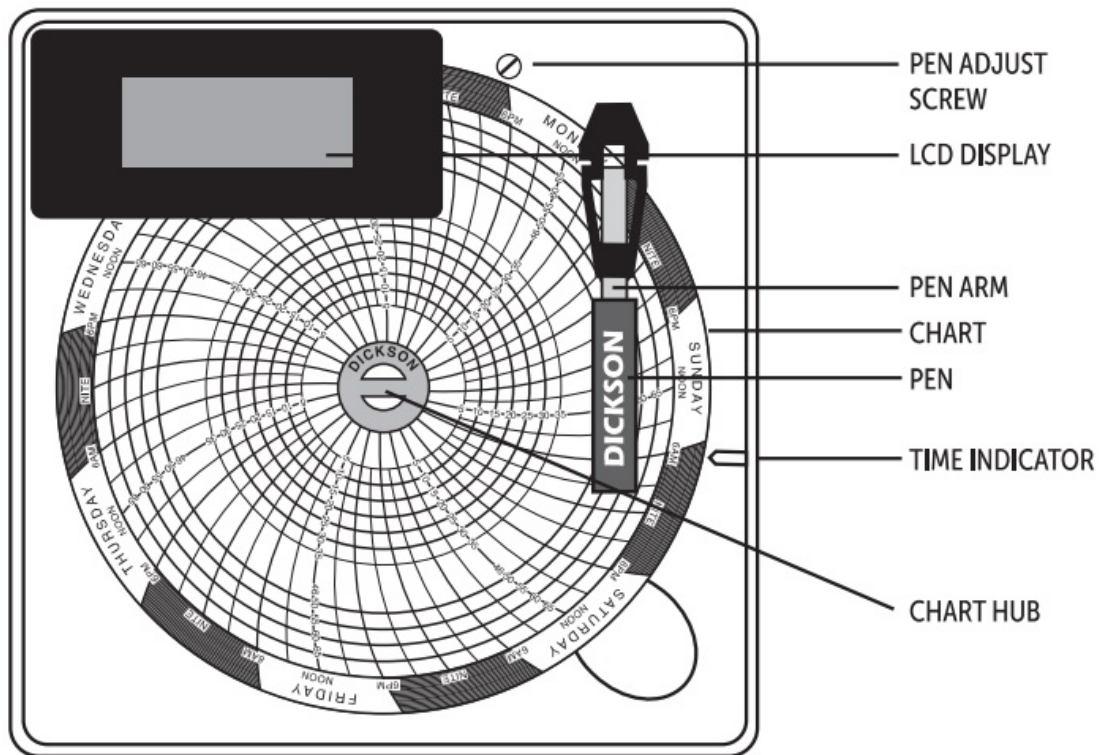
- The chart recorder and digital display are two independent measuring instruments, with different specifications. There is a certain amount of discrepancy allowed between chart and display, depending on the range of the chart recorder. An SL4100, for example, has a scale of Oto +100 degrees (a range of 100 degrees). That means a 2 degree tolerance for the chart.
- The digital display has a tolerance of 3.6 degrees, which means there is a maximum allowed discrepancy of 5.6 degrees between the chart and display. The chart may be adjusted using the pen adjust screw on the face of the unit. If the display is out of specification, the display can be replaced but not calibrated.

FACTORY SERVICE & RETURNS

Contact Customer Service at 630.543.3747 for a Return Authorization Number (RA) before returning any instrument. Please have the model and serial numbers and PO ready before calling.

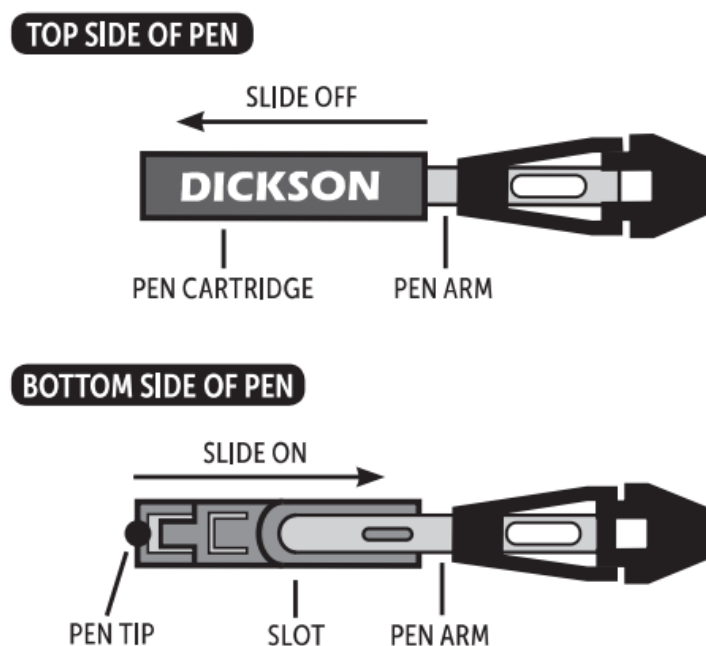
Note: Dickson shall not be liable for consequential or incidental damages resulting from failure or malfunction of its products.

CHART REPLACEMENT



1. Flip pen arm up and away from chart. Slip your finger under the chart and lift the chart off the chart hub
2. Put one new chart on the recorder
3. Make sure the center of the chart, between chart hub, is not torn
4. Set the time by inserting a coin in chart hub and turning clockwise until the current hour is referenced by the time indicator
5. Flip pen arm down

PEN REPLACEMENT




1. Flip pen arm up
2. Slide used pen cartridge off pen arm
3. Slide new pen cartridge on pen arm
4. Make sure end of pen arm comes into contact with pen tip
5. Remove pen cap
6. Flip pen arm down

FAQS


- **What should I do if the chart is not rotating?**
Ensure the chart hub is properly secured and the chart is not upside down.
- **How do I replace the pen?**
Flip the pen arm up, slide the used pen cartridge off, slide a new pen cartridge on, ensure the tip contacts the chart, remove the pen cap, and flip the pen arm down.
- **What is the battery life of the SL4 recorder?**
The SL4 recorder has a battery life of 1 year.


Documents / Resources

	DICKSON SL4 Temperature Chart Recorder [pdf] User Guide SL4, SK4, SL4 Temperature Chart Recorder, SL4, Temperature Chart Recorder, Chart Recorder, Recorder
---	--

References

- [User Manual](#)

 Chart Recorder, Dickson, Recorder, SK4, SL4, SL4 Temperature Chart Recorder, Temperature Chart

 Dickson Recorder

[—Previous Post](#)
DICKSON TH8 Temperature and Humidity Recorder User Guide

[Next Post—](#)
DICKSON TC700,TH700 Hand Held User Guide

Leave a comment

Your email address will not be published. Required fields are marked *

Comment *

Name

Email

Website

☐ Save my name, email, and website in this browser for the next time I comment.

Post Comment

[Manuals+](#), [Privacy Policy](#) | [@manuals.plus](#) | [YouTube](#)

This website is an independent publication and is neither affiliated with nor endorsed by any of the trademark owners. The "Bluetooth®" word mark and logos are registered trademarks owned by Bluetooth SIG, Inc. The "Wi-Fi®" word mark and logos are registered trademarks owned by the Wi-Fi Alliance. Any use of these marks on this website does not imply any affiliation with or endorsement.