

DICKSON

DBL Quick Start Guide

Contents [[hide](#)]

- [1 What's in the Box:](#)
- [2 Accessories \(not included\):](#)
- [3 Navigating the Device](#)
- [4 Getting Started with the DBL](#)
- [5 Configuring Device Settings Using DicksonWare 2.0](#)
- [6 Start Logging](#)
- [7 Downloading Data](#)
- [8 Firmware](#)
- [9 Documents / Resources](#)
 - [9.1 References](#)

What's in the Box:



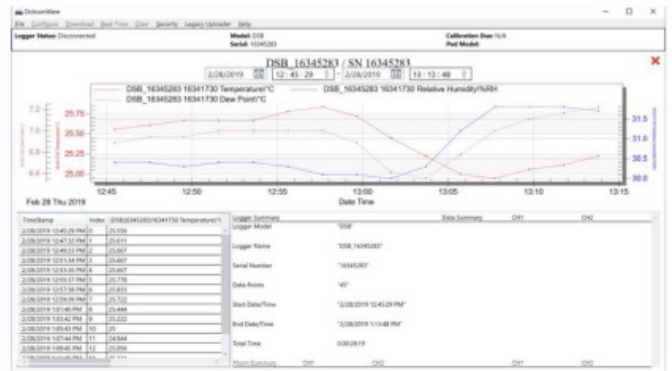
DBL Data Logger



1 AA Lithium Battery



Mounting Bracket & Mounting Hardware



DicksonWare (non-secure)

Accessories (not included):



AC Adapter & Power Cable

Note: DicksonWare Secure, which is 21CFR Part 11 compliant, sold separately

Navigating the Device



1. Recent reading
2. Recording indicator
3. Temperature units (rotates between any channels on the device)
4. Channel number; rotates between CH1 (temperature) and CH2 (relative Humidity, if active)
5. Battery indicator
6. Alarm Icon (bell, not pictured)
7. Start/Stop button used to begin and pause data logging

Getting Started with the DBL

Follow these easy steps to begin logging data quickly:

1. Open the rear battery compartment door and add 1 AA battery
2. The device will power on and flash the current firmware version on the screen for a few seconds
3. 4 static dashes along with a wrench icon will appear on the screen
4. To configure the DBL, using a USB cable, connect the device to a computer (with DicksonWare 2.0 software installed)

Configuring Device Settings Using DicksonWare 2.0

Install DicksonWare 2.0 (if not already installed)

1. Plug the USB stick that contains the file into your computer
2. Open the external USB drive to view the installation file
3. Click on the Dicksonware installation file to begin downloading
4. Once the download is complete

Note: DicksonWare 2.0 Version 20.3.2.0 or greater required

Note: The DicksonWare 2.0 USB includes a manual for DicksonWare 2.0 operation.

Configure Device Settings

Launch DicksonWare 2.0

1. Launch the program by clicking the icon on your desktop or by finding it in the Start

menu

2. Connect the DBL to your computer using the USB cable. The software will recognize the connected device
3. Click the “Configure” button at the top of the screen. Give the logger a name

Sample Rate

1. On the “Configure” screen of Dicksonware 2.0, go to the “Sample Rate” tab in the sidebar
2. Select a sample interval (how often the device takes a reading) from the dropdown
3. (**NOTE:** selecting a faster sample rate will affect battery life.)
4. Select whether you want the device to STOP logging when full, or WRAP (overwrite) when full

Note on battery life

The two year battery life specification with a regular AA battery is based on the following assumptions:

- 5 minute sample rate
- 3 second display refresh rate
- 3 Audible/visual alarms per month
- Operating at ambient temperature

Channels

- On the “Configuration” screen of Dicksonware, go to the “Channels” tab in the sidebar
 - Adjust the temperature units in Fahrenheit or Celsius
- Humidity channel recording can be turned off/on via this tab

Alarms

- On the “Logger Settings” screen, go to the “Alarms” tab in the sidebar
 - For each alarm, select either:
 - Min = lower threshold (device alarms when temperature goes below this point)

- Max = upper threshold (device alarms when temperature goes above this point)
 - Input the temperature value or humidity % for the threshold
 - Click “Save”
- Device will sound an alarm when the temperature and/or humidity readings cross the predefined threshold
 - The alarm icon will illuminate in the display
 - The unit will blink a specific color to indicate the type of alarm:
 - Red = Temperature alarm
 - Green = Humidity alarm
 - Blue Calibration past due
 - Alarm will sound for 1 minute until readings fall back within the set range.
 - If the DBL continues logging and the device remains in an alarm state after 1 minute then the device will continue to beep twice every 5 minutes.
 - Audible/Visual alarm will clear automatically when the current reading no longer exceeds min/max limits

Start Logging

- Once the device is properly configured click Save
- It is now safe to disconnect the device
- 4 flashing dashes will appear on the screen signaling the device is ready to begin logging data
- To begin logging data, hold Start/Stop button for 5 seconds
- “Strt” will appear on the screen to signal that datalogging has begun
- To stop or pause logging, hold the Start/Stop button for 5 seconds. Logging will continue when you again press the Start/Stop button for 5 seconds

Downloading Data

Downloading data from the data logger requires DicksonWare 2.0 or DicksonWare 2.0 Secure and a USB cable, both are sold separately.

To download data from the device:

1. Launch DicksonWare 2.0

- 2. Connect the DBL via the USB cable
- 3. On the Dicksonware home screen, click the “Download” button
- 4. Data will automatically start downloading from the device. This may take a few minutes depending on the amount of data stored on the logger

Once download is complete, you will be able to view the data in the interface and select a range


You can extend the battery life up to 6 years by using a Lithium AA battery with the same assumptions above.

Firmware

The DBL comes preloaded with up-to-date firmware. When the unit is powered on, the current version number will flash on the screen. You should not normally have to update the firmware on the unit, but on the rare occasion where a new update is available, you can visit our website for information: <https://dicksondata.com/product/compact-data-logger/>

For additional support
Visit: support.dicksonone.com
Email: support@dicksonone.com
Call: 630.543.3747

Documents / Resources

	<p>DICKSON DBL Data Logger [pdf] User Guide</p> <p>6345283, 16345283, 16341730, DBL Data Logger, DBL, Data Logger, Logger</p>
---	---

References

- [User Manual](#)

—Previous Post

DICKSON PR150, PR350 Pressure Logger Owner's Manual

Leave a comment

Your email address will not be published. Required fields are marked *

Comment *

Name

Email

Website

☐ Save my name, email, and website in this browser for the next time I comment.

Post Comment

Search:

Search

[Manuals+](#) | [Upload](#) | [Deep Search](#) | [Privacy Policy](#) | [@manuals.plus](#) | [YouTube](#)

This website is an independent publication and is neither affiliated with nor endorsed by any of the trademark owners. The "Bluetooth®" word mark and logos are registered trademarks owned by Bluetooth SIG, Inc. The "Wi-Fi®" word mark and logos are registered trademarks owned by the Wi-Fi Alliance. Any use of these marks on this website does not imply any affiliation with or endorsement.