



DamaPro SYSTEMS DP-JSX-10 Walk-Behind Saw Owner's Manual

[Home](#) » [DamaPro SYSTEMS](#) » DamaPro SYSTEMS DP-JSX-10 Walk-Behind Saw Owner's Manual 

Contents

- [1 DamaPro SYSTEMS DP-JSX-10 Walk-Behind Saw](#)
- [2 INTRODUCTION](#)
- [3 SAFETY INSTRUCTIONS](#)
- [4 PRODUCT SET-UP](#)
- [5 Documents / Resources](#)
 - [5.1 References](#)
- [6 Related Posts](#)



DamaPro SYSTEMS DP-JSX-10 Walk-Behind Saw



INTRODUCTION

Thank you for purchasing a DIAMAPRO SYSTEMS® product.

This manual provides information and procedures to safely operate and maintain the DP-JSX-10. For your own safety and protection from injury, carefully read, understand, and observe the safety instructions described in this manual. Keep this manual or a copy of it with the machine. If you lose this manual or need an additional copy, please contact DiamaPro Systems®. This machine is designed and built with user safety in mind; however, it can present hazards if improperly operated and serviced. Please follow the operating instructions carefully. If there are any questions regarding operating or servicing of this machine, please contact DiamaPro Systems®.

Disclaimer: DiamaPro Systems® and its affiliates take no responsibility for any damage, injury or death resulting from the incorrect or unsafe use of this product. Use of this product should be undertaken by competent persons only. It is the operator's responsibility to ensure that the following safety procedures are followed. If you are unsure, do not operate this product.

SAFETY INSTRUCTIONS

KNOW THE RULES & YOUR EQUIPMENT

- Most Job sites have rules governing equipment use & maintenance. Before starting at a new work location, check with the supervisor or safety coordinator. Ask about any rules or regulations you need to abide. OSHA enforces federal laws within the United States that apply to the safe operation, application, & maintenance of equipment on job sites. It is the employer's responsibility to comply with these laws.
- Do not operate this machine unless you have read the operations and maintenance manual carefully. Read any additional instructions included from other manufacturers and organizations and the Masonry and Concrete Saw Manufacturers Institute. Learn the applications and limitations as well as the specific potential hazards related to this tool.

RECEIVE PROPER TRAINING

- Do not operate this machine unless you have received operational and maintenance training from a DiamoPro Systems® representative or from an authorized distributor for DiamoPro Systems®.

PROTECT YOUR FEET

- Observe all applicable local, state and federal safety regulations. Wear OSHA approved foot protection.

PROTECT YOUR EYES

- Observe all applicable local, state and federal safety regulations. Wear OSHA approved safety glasses.

PROTECT YOUR LUNGS

- Breathable silica may be generated by use of this product. Silica can cause severe and permanent lung damage, cancer, and other serious diseases. Do not breathe the dust.
- Do not rely on your sight or smell to determine if the dust is in the air. Silica may be in the air without a visible dust cloud. If air monitoring equipment for silica is not provided by your employer at your work site, you **MUST** wear appropriate respiratory protection when using or servicing the machine. If dry cutting, be sure to use a
- HEPA filtered dust collector. Consult your employer and OSHA regarding the appropriate respiratory protection.

PROTECT YOUR HEARING

- Observe all applicable local, state and federal safety regulations. Wear OSHA approved hearing protection.

DRESS PROPERLY

- Do not wear loose clothing or jewelry that can be caught in moving parts. Wear protective hair covering to contain long hair. Keep hair away from motor air vent. Rubber gloves and non-skid footwear are recommended when working outdoors.

AVOID A DANGEROUS ENVIRONMENT

- Do not expose machine to rain. Do not use machine in wet conditions.
- Keep work area well lit. When working at an elevated location, pay attention to articles and persons below.

BEWARE OF HIDDEN DANGERS IN CONCRETE

- Rebar or utility lines may be buried in concrete. Disconnect the power to any utility lines. If these items are to be missed, clearly mark the area. If these items are to be cut, check the blade manufacturer's guidelines on material to be cut.

KEEP WORK AREA CLEAN. DO NOT RUN OVER ANYTHING

- Loose objects could be thrown from crack. Make sure area to be cut is clear from people and any loose objects, nuts, bolts, etc. Never run over any loose objects

KEEP CHILDREN AND VISITORS AWAY

- Do not allow anyone to stand in line with the blade path. Do not let children or visitors contact machine or extension cord. Keep children and visitors away from the work area.

AVOID FLAMMABLE LIQUIDS OR GASES

- Engines and diamond blades produce heat and sparks during operation. Never use machines in dangerous sites containing flammable, combustible or explosive materials such as lacquer, paint, benzene, thinner, gasoline, gases, and adhesive agents.

AVOID CONTACT WITH HOT BLADE AND BLADE GUARD

- The blade and blade guard become hot during operation and remain hot after stopping the engine. Do not touch the blade and blade guard without proper hand protection.

KEEP FIRM GRIP ON MACHINE

- During normal operation as instructed in Section 6.0, keep a firm hold on the handle grips and maintain control of the machine until the blade completely stops.

CHECK BLADE AND MACHINE ROTATION DIRECTION

- Never operate a blade in the wrong rotation direction. Check the machine rotation direction and blade direction when mounting a blade.

CHECK BLADE MAXIMUM ALLOWABLE SPEED

- Check the maximum operating speed of the machine and blade. Never use a blade rated less than the machine's maximum speed rating.

CHECK BLADE FOR CRACKS, DAMAGE, AND MISALIGNMENT

- Never use a cracked, damaged, or misaligned blade. After mounting blade, rotate by hand to check for proper alignment.

CHECK DIAMOND BLADE FOR WARNINGS

- Many diamond blades contain a chemical known to the state of California to cause cancer and/or birth defects or other reproductive harm. Diamond blades improperly used are dangerous. Comply with American National Standards Institute Safety Code B71 and Occupational Safety & Health Act covering SPEED, SAFETY

GUARDS, FLANGES, MOUNTING PROCEDURES, GENERAL OPERATING RULES, HANDLING, STORAGE& INSPECTION AND GENERAL MACHINE CONDITIONS. Read Diamond Blades Safety Manual before use.

DO NOT FORCE WRONG SIZE OR TYPE BLADE ONTO MACHINE

- Do not force a blade onto the machine shaft or alter the size of the arbor mounting hole. Be certain that the drive pin is in place through the blade when tightening the blade nut. Never add a drive pin hole or modify a blade.

USE CORRECT SAW AND ACCESSORIES

- Do not force a small saw to do the job of a heavy-duty saw. Do not use the saw for improper applications. Never cut material for which the blade was not designed. Check blade manufacturer's guidelines on material to be cut.

STORE IDLE EQUIPMENT

- The machine, blades and tools should be stored in a dry and secure location when not in use. Keep equipment out of reach of children.

DO NOT FORCE SAW

- The saw will do the job better and safer at the rate for which it was designed.

OBTAIN MATERIAL SAFETY DATA SHEET (MSDS) FOR ALL WORK SURFACE MATERIALS

- This includes primers, all coatings, adhesives, tile and crack filling materials, etc. Do not attempt to cut, clean out or remove material without MSDS information. Consult MSDS sheet for hazards information. Be aware that some materials are explosive as a dust.

DO NOT OVERREACH

- Keep proper footing and balance at all times.

MAINTAIN MACHINE WITH CARE

- Keep machine clean and follow maintenance procedures for better and safer performance. Keep handles dry, clean, and free from oil and grease.
- Follow instructions for lubricating and changing accessories.

REMOVE ADJUSTING TOOLS

- Form a habit of checking to see that tools such as adjusting wrenches are removed from the machine and properly stored before starting the engine.

STAY ALERT

- Watch what you are doing. Use common sense. Do not operate machine when you are tired or fatigued.

DO NOT USE DRUGS, ALCOHOL, MEDICATION

- Do not operate machine while under the influence of drugs, alcohol, or any medication.

KEEP THE RIGHT PARTS IN THE RIGHT POSITIONS

- Do not operate machine with parts missing or improperly mounted.

CHECK DAMAGED PARTS

- Verify all machine guards are in good condition and will function properly before using the machine. Check for alignment of moving parts, binding of moving parts, breakage of parts, mounting, and any other conditions that may affect machine operation. A guard, power switch or other part that is damaged should be properly repaired or replaced by an authorized service center unless indicated elsewhere in this instruction manual. Do not operate machine if lever or engine on/off switch does not function properly.

SECURELY MOUNT ACCESSORIES AND BLADES TO THE MACHINE

- Extra care must be taken when using saws on an elevated location to prevent injury to someone on a lower level in the event the tool or accessory should drop. Do not operate without fall protection for operator and debris protection for public.

NEVER TOUCH THE MOVING PARTS

- Never touch moving parts such as blades, belts and others.

STOP OPERATION IMMEDIATELY IF ANY ABNORMALITY IS DETECTED

- Stop using machine immediately if any abnormalities are observed during operation. Examples of abnormalities include unusual noise and vibration.

WHEN REPLACING A PART, USE THE SAME TYPE AND QUALITY

- When replacing a component part with a new one, use only the same type and quality of new part. Never attempt to repair a machine if you are unfamiliar with proper procedures and techniques required.

NEVER DISABLE THE LEVER

- Do not modify, disable, or attempt to permanently engage the lever. Do not operate a machine if lever is not

functioning. This could lead to serious injury or death.

LOAD AND UNLOAD SAFELY

- Use proper heavy lifting procedures. Read & understand manuals before loading & unloading.

STORAGE

- Always store equipment properly when it is not being used. Equipment should be stored in a clean, dry location and out of reach of children.

SAVE THESE INSTRUCTIONS

- Refer to this operations and maintenance manual as well as any additional instructions included from other manufacturers and organizations and the
- Masonry and Concrete Saw Manufacturers Institute®.
- Never permit anyone to operate the machine without proper instructions.

DUST WARNING

- Cutting, especially when DRY cutting, generates dust that comes from the material being cut, which frequently contains silica.
- When dry cutting, be sure to use a HEPA filtered dust collector.
- Silica is a basic component of sand, quartz, brick clay, granite and numerous other minerals and rocks. Exposure to excessive amount of such dust can cause:
 - Respiratory diseases (affecting your ability to breath), including chronic bronchitis, silicosis and pulmonary fibrosis from exposure to silica. These diseases may be fatal;
 - Skin irritation and rash; and
 - Cancer according to NTP* and IARC*
- National Toxicology Program, International Agency for Research on Cancer
- Take precautionary steps
- Avoid inhalation of and skin contact with dust, mist and fumes;
- Wet cut when feasible, to minimize dust;
- Wear and ensure that all bystanders wear appropriate respiratory protection such as dust masks designed to filter out microscopic particles. (See OSHA 29 CFR Part 1910.1200)
- California Prop 65 Warning: Use of this product can cause exposure to materials known to the State of California to cause cancer and/or birth defects or other reproductive harm.

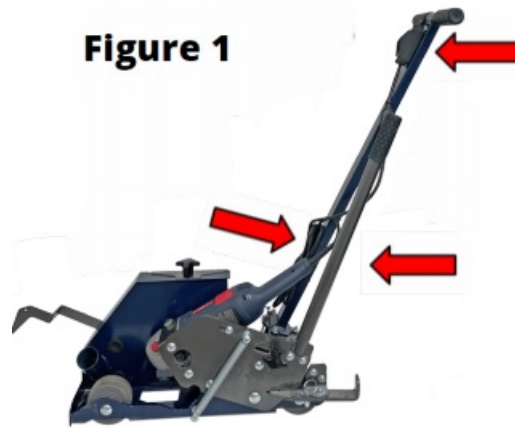
DANGER ELECTRICAL SHOCK HAZARD

- **Warnings!**
- These instructions are only intended to show you the set-up of our saw
- Do not use until you have been trained on how to properly operate a walk behind concrete saw.
- Stay clear of others while in operation.

- Debris can fly from blade area.
- Eye and face protection required.
- Respirator required.
- Operate in well ventilated area. Ear protection required.

PRODUCT SET-UP

Set-Up: Red Arrows (Fig. 1)



1. Install the control and lift handle as shown in Fig. 1.
2. Hang cord on handle cord rest. Secure on rest using the factory provided twist tie.
3. Apply powerhead trigger lock. Plug cord into the electrical box.

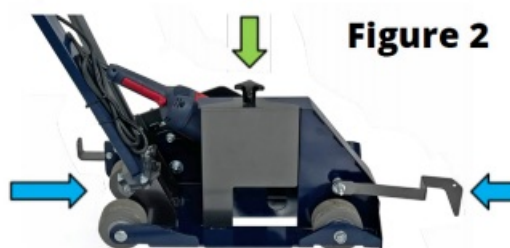
Never leave the unit plugged in while unattended or while replacing the blade

Blade Installation: Green Arrows (Fig. 2)

1. Unplug the power cord from the electrical box. Remove the blade guard.
2. Remove outer blade clamp and install the blade.
3. Firmly tighten the blade.

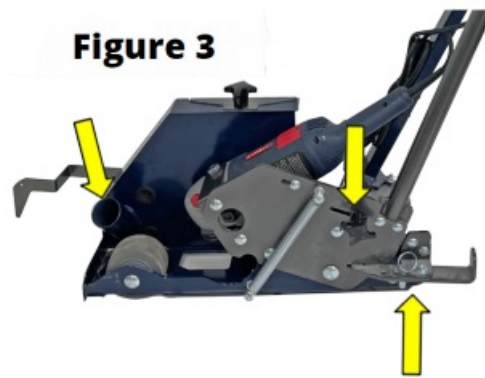
We recommend using a DiamoPro Systems® 8" Diamond Blade

Blade Pointer Alignment: Blue Arrows (Fig. 2)



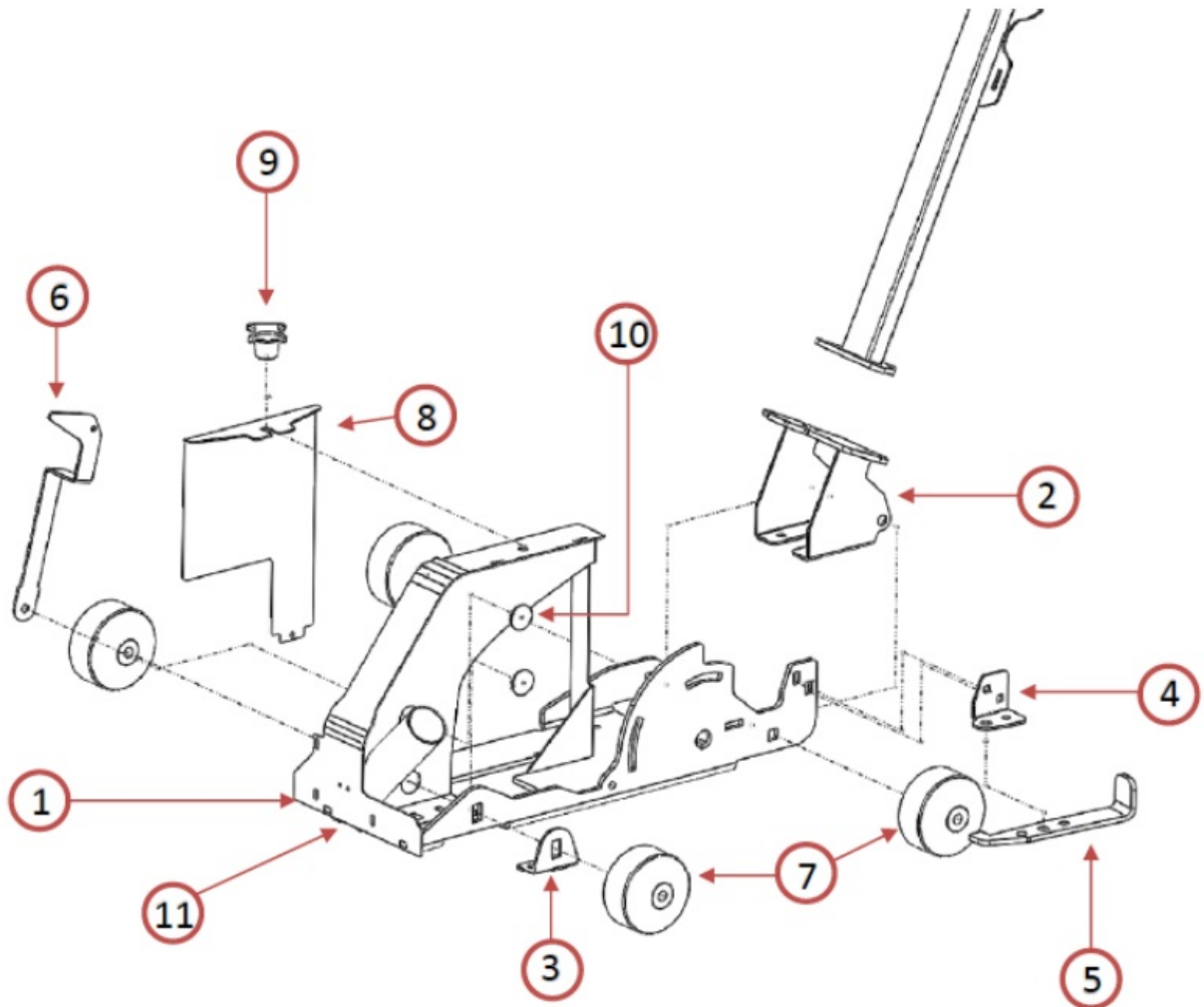
1. After proper blade installation, align the rear pointer and the blade with a known straight edge.
2. Using the supplied washer/shims, align the front pointer to the known straight edge. Be sure to tighten the front pointer bolt.

Feature Call Outs: Yellow Arrows (Fig. 3)

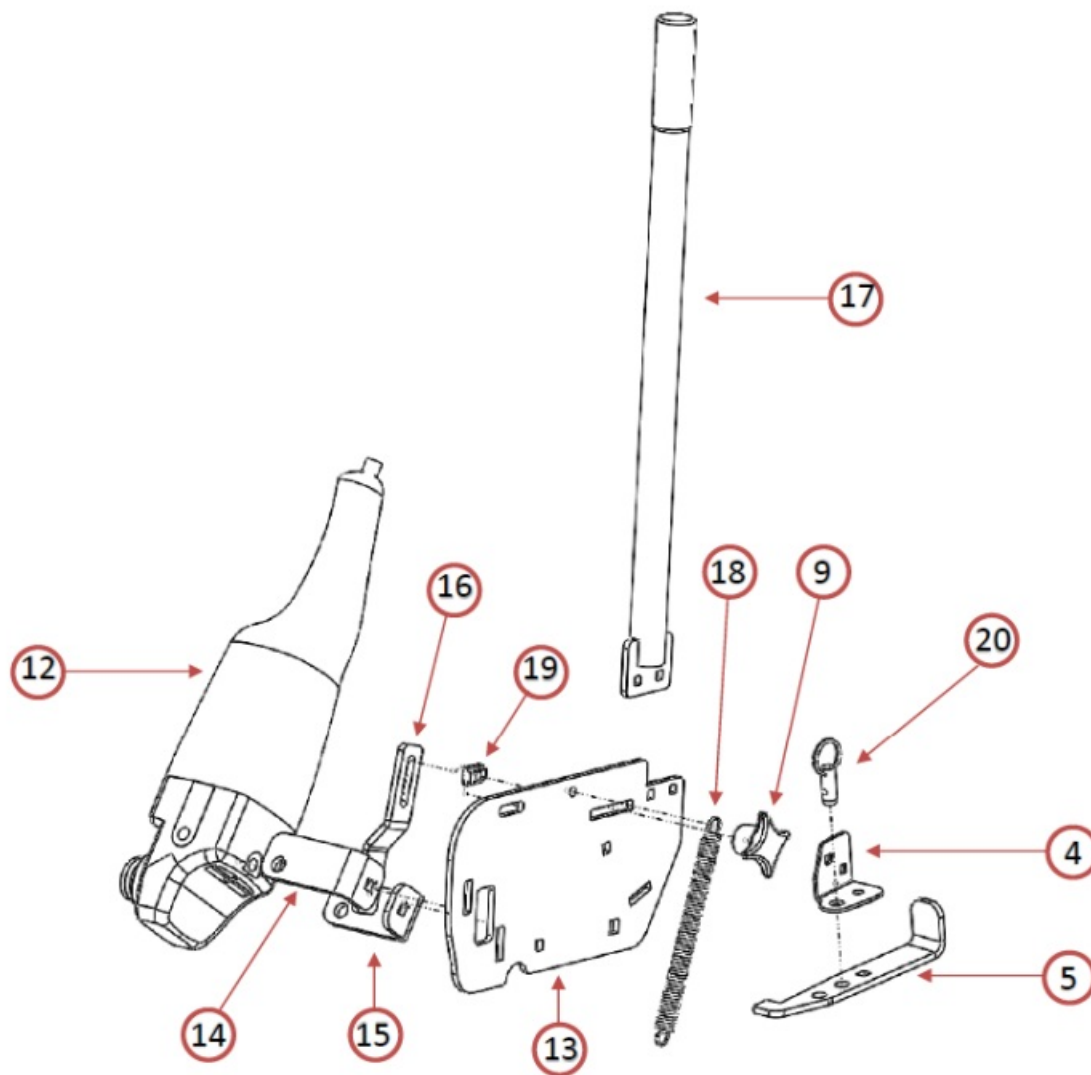


- 2-inch dust port: Minimum 250 CFM required
- Blade depth adjustment knob. Loosen knob and slide left or right to set blade depth.
- Foot lever locks the motor in the UP position. Be sure to install the lock-out pin while not in use and for transportation.

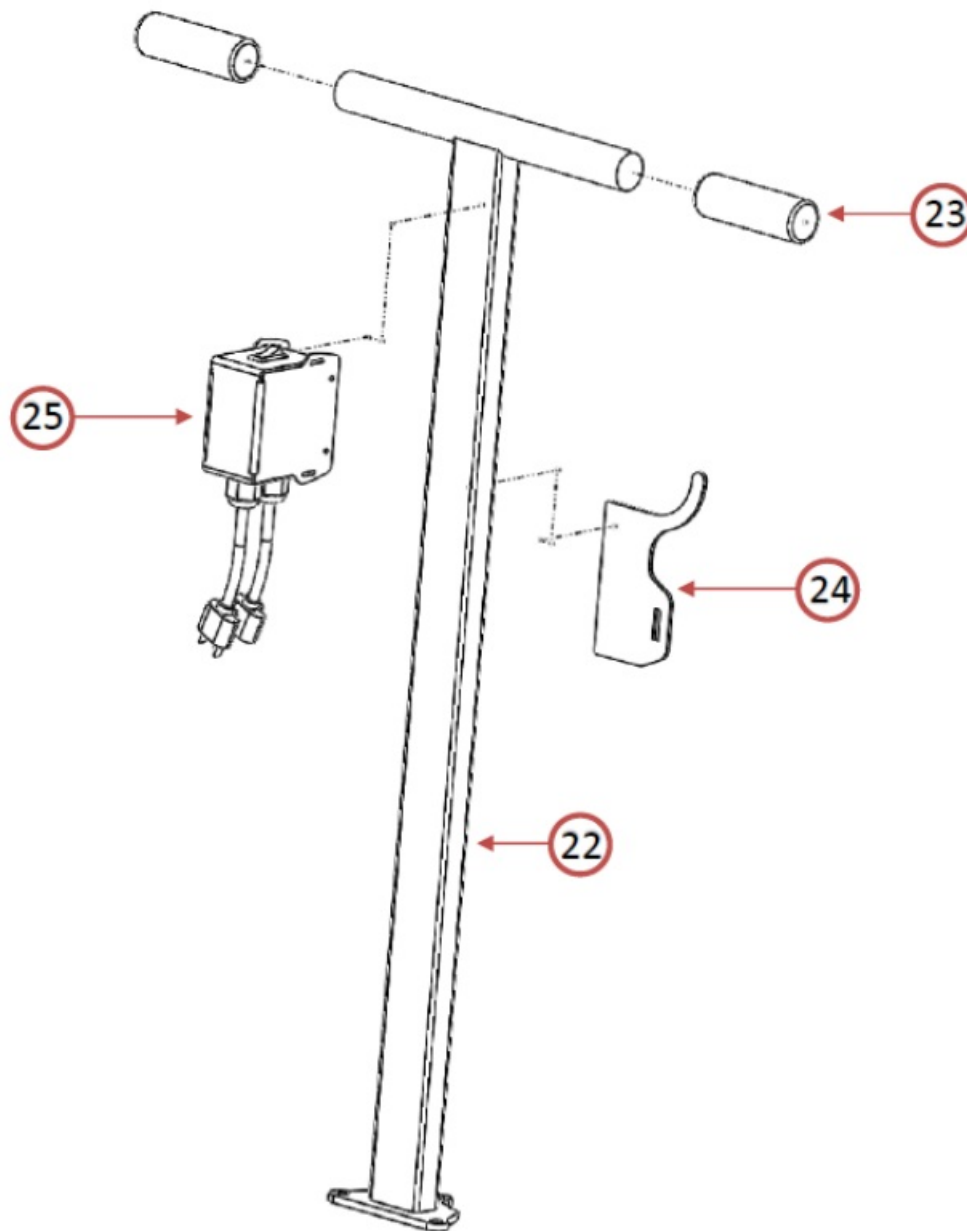
| Part Number | Description |
|-------------|------------------------------|
| 10 – 1 | SAW BASE |
| 10 – 2 | HANDLE/REAR WHEEL MOUNT |
| 10 – 3 | ADJUSTABLE FRONT WHEEL MOUNT |
| 10 – 4 | MOTOR LOCK MOUNT |
| 10 – 5 | MOTOR LOCK |
| 10 – 6 | BLADE POINTER |
| 10 – 7 | WHEELS (SOLD INDIVIDUALLY) |
| 10 – 8 | BLADE GUARD |
| 10 – 9 | 4-ARM KNOB |
| 10 – 10 | HOLE PLUG |
| 10 – 11 | DUST DEFLECTOR |



| Part Number | Description |
|-------------|----------------------|
| 10 – 12 | DP-HGX-7 |
| 10 – 13 | MOTOR MOUNTING PLATE |
| 10 – 14 | UPPER MOTOR MOUNT |
| 10 – 15 | LOWER MOTOR MOUNT |
| 10 – 16 | CENTER MOTOR MOUNT |
| 10 – 17 | LIFT/LOWER HANDLE |
| 10 – 18 | TENSION SPRING |
| 10 – 19 | DEPTH STOP |
| 10 – 20 | DETENT PIN |




| Part Number | Description |
|-------------|-------------------|
| 10 – 21 | COMPLETE ASSEMBLY |
| 10 – 22 | HANDLE |
| 10 – 23 | HANDLE GRIP |
| 10 – 24 | CORD WRAP |
| 10 – 25 | ELECTRICAL BOX |



- DiamaPro Systems® 3343 Peachtree Road NE Suite 145 #24
- Atlanta, GA 30326
- 470-977-2323

Documents / Resources

| | |
|--|--|
|  <p>OWNER'S MANUAL DP-JSX-10 WALK-BEHIND SAW</p> <p>OPERATION & MAINTENANCE MANUAL SAVE THESE INSTRUCTIONS FOR FUTURE REFERENCE</p> | <p>DiamaPro SYSTEMS DP-JSX-10 Walk-Behind Saw [pdf] Owner's Manual DP-JSX-10 Walk-Behind Saw, DP-JSX-10, Walk-Behind Saw, Behind Saw</p> |
|--|--|

References

-  [Concrete grinding equipment, diamond tooling, chemicals with Microban® | DiamaPro Systems](#)

