



Dialog SEMICONDUCTOR SLG4DVKGS GreenPAK Serial Debugger User Guide

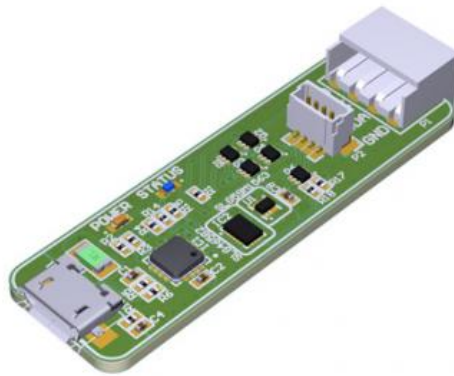
[Home](#) » [dialog SEMICONDUCTOR](#) » Dialog SEMICONDUCTOR SLG4DVKGS GreenPAK Serial Debugger User Guide 

Contents

- [1 Dialog SEMICONDUCTOR SLG4DVKGS GreenPAK Serial Debugger User Guide](#)
- [2 Install GreenPAK Designer Software](#)
- [3 Create Your Project](#)
- [4 Prepare the GreenPAK Serial Debugger](#)
- [5 Connection](#)
- [6 Use Emulation Tool](#)
- [7 Emulate or Program the Chip](#)
- [8 Documents / Resources](#)
- [9 Related Posts](#)



Dialog SEMICONDUCTOR SLG4DVKGS GreenPAK Serial Debugger User Guide



Install GreenPAK Designer Software

Download and install the latest GreenPAK Designer software from <https://www.dialog-semiconductor.com/greenpak-designer-software>.

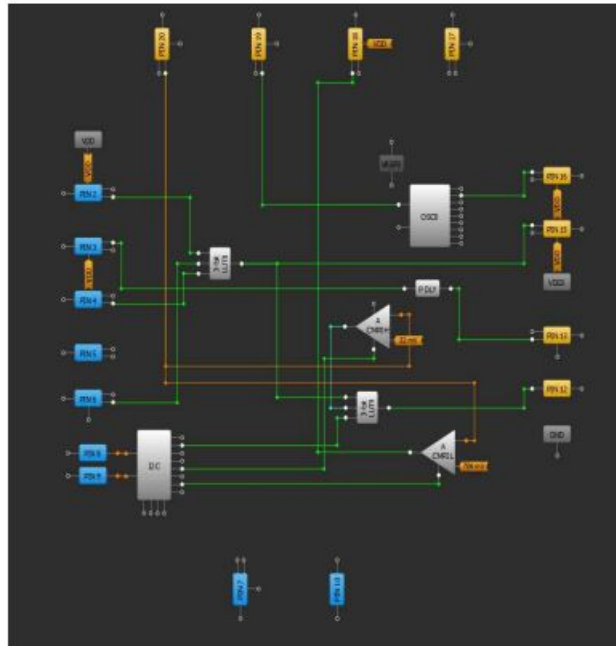


Create Your Project

Start GreenPAK Designer Software and select the GreenPAK device which best suits your design and supports I2C interface. You are now ready to start developing using all available components including LUTs, DFFs, DLYs and much more.

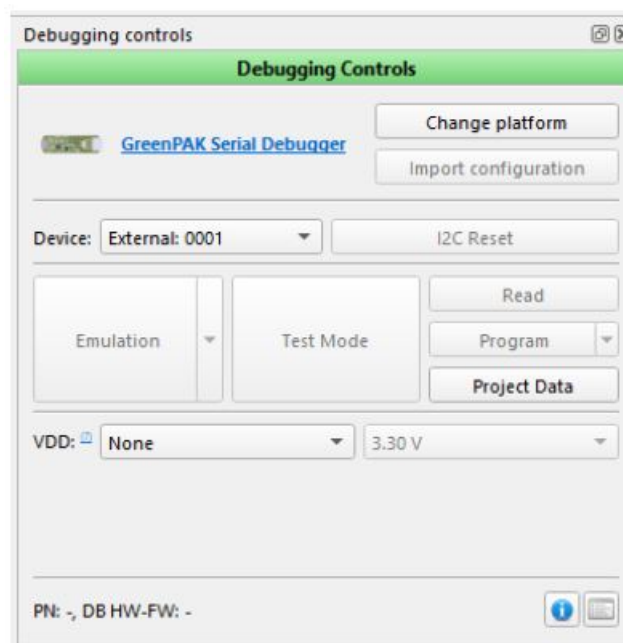
Use Emulation Tool

Click the toolbar icon to start the GreenPAK Emulation Tool. Choose GreenPAK Serial Debugger as your development platform and press the “Emulation” button to load your project code onto the chip. At this point the chip will operate according to the project code. Emulation can be performed multiple times, even on programmed chips. Press the “Emulation” button again to exit the emulation mode.



Emulate or Program the Chip

Press the “Program” button to program the chip. To enable test chip mode, click the “Test Mode” button. After pressing “Test Mode” button, the software made settings which will be applied to the chip’s configuration. This mode allows you to test the programmed GreenPAK chip using I2C debug.



Documents / Resources



[dialog SEMICONDUCTOR SLG4DVKGSD GreenPAK Serial Debugger](#) [pdf] User Guide
SLG4DVKGSD, GreenPAK Serial Debugger