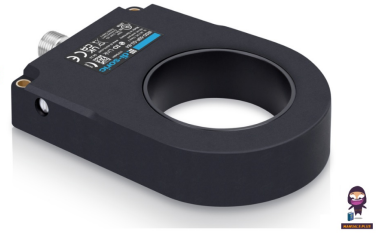
 **di-soric**
IRSD-50P Inductive
Ring Sensor



di-soric IRSD-50P Inductive Ring Sensor Owner's Manual

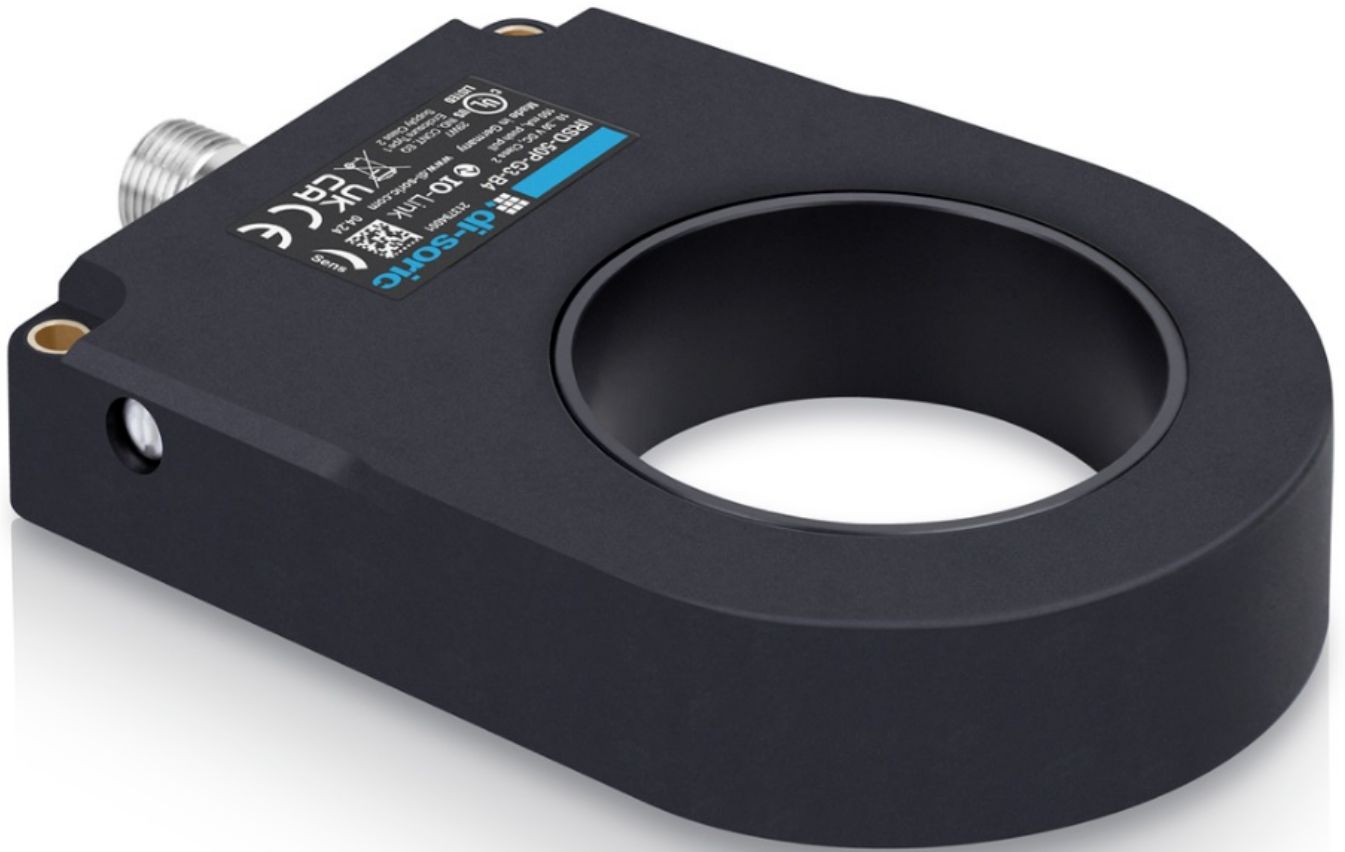
[Home](#) » [di-soric](#) » di-soric IRSD-50P Inductive Ring Sensor Owner's Manual 

Contents

- [1 di-soric IRSD-50P Inductive Ring Sensor](#)
- [2 Specifications](#)
- [3 DIMENSION](#)
- [4 WIRING](#)
- [5 Safety instructions](#)
- [6 Technical data](#)
- [7 MORE INFORMATION](#)
- [8 FAQ](#)
- [9 Documents / Resources](#)
 - [9.1 References](#)



di-soric IRSD-50P Inductive Ring Sensor

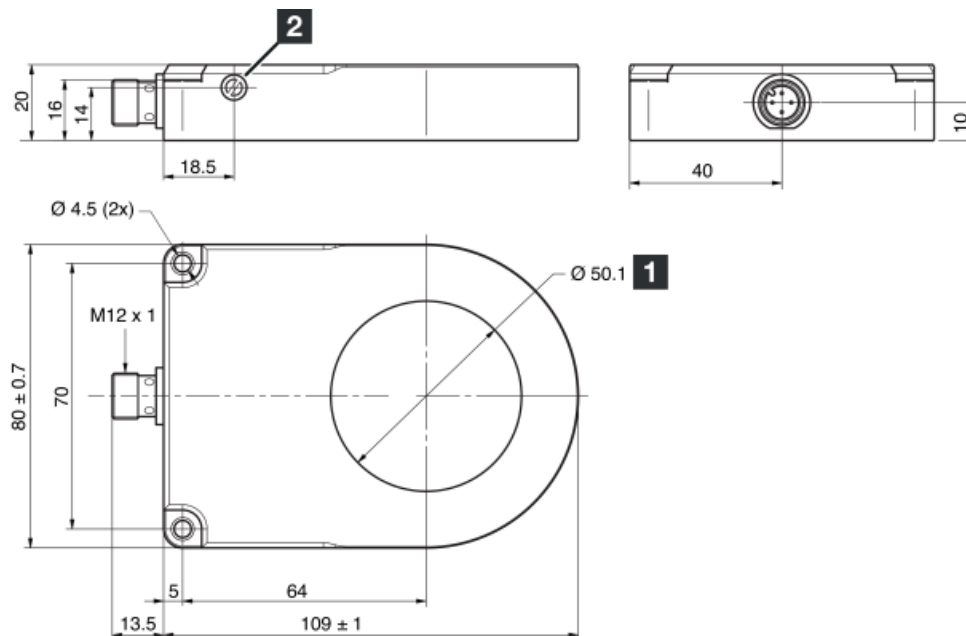


Specifications

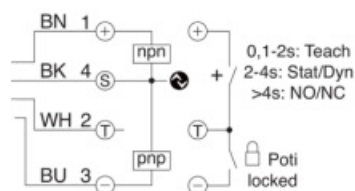
- **Model:** IRSD-50P-G3-B4
- **Type:** Inductive Ring Sensor
- **Enclosure:** Type 4X (indoor use only), 12, 13
- **Supply Class:** 2 NFPA 79 Applications only
- **Service Voltage:** 10-30 V DC
- **Switching Output:** Gegentak/PNP/NPN, 100 mA, NO/NC
- **Max. No-load Current:** 30 mA
- **Min. Speed of Parts:** 0.1 m/s
- **Max. Speed of Parts:** 35 m/s
- **Protection Type:** IP 67
- **Ambient Temperature during Operation:** Not specified

DIMENSION

- Ring diameter
- sensitivity



WIRING



- **BK:** black
- **BN:** brown
- **BU:** blue
- **WH:** white

Safety instructions

General safety notice

WARNING! Not a safety component pursuant to 2006/42/EG and EN 61496-1/-2! May not be used for personal protection! Non-compliance can lead to death or serious injuries! Only use as directed!

Technical data

Technische Daten	Technical data
Innendurchmesser	Internal diameter
Betriebsspannung	Service voltage
Schaltausgang	Switching output
Leerlaufstrom (max.)	No-load current (max.)
Teilegeschwindigkeit (min.)	Speed of parts (min.)
Teilegeschwindigkeit (max.)	Speed of parts (max.)
Schutzart	Protection type
Umgebungstemperatur Betrieb	Ambient temperature during operation

As of 05/17/24, subject to change

Enclosure Type 4X (indoor use only), 12, 13 Supply Class 2

NFPA 79 Applications only. For adapters providing field wiring means referring to product information or customer support.

SCANNER



MORE INFORMATION

- di-soric GmbH & Co. KG Steinbeisstraße 6 DE-73660 Urbach
- Germany
- **Tel:** +49 (0) 7181/9879-0
- info@di-soric.com · www.di-soric.com

FAQ

- **Q: Can this sensor be used outdoors?**
 - A: No, this sensor is designed for indoor use only as indicated by its enclosure type.
- **Q: What is the recommended voltage supply for this sensor?**
 - A: The recommended voltage supply range for this sensor is 10-30 V DC.

Documents / Resources

	di-soric IRSD-50P Inductive Ring Sensor [pdf] Owner's Manual IRSD-50P-G3-B4, 213794, IRSD-50P Inductive Ring Sensor, IRSD-50P, Inductive Ring Sensor, Ring Sensor
---	--

References

- di-soric.com
- [di-soric – Solutions. Clever. Practical.](#)
- [User Manual](#)

Manuals+ Privacy Policy

This website is an independent publication and is neither affiliated with nor endorsed by any of the trademark owners. The "Bluetooth®" word mark and logos are registered trademarks owned by Bluetooth SIG, Inc. The "Wi-Fi®" word mark and logos are registered trademarks owned by the Wi-Fi Alliance. Any use of these marks on this website does not imply any affiliation with or endorsement.