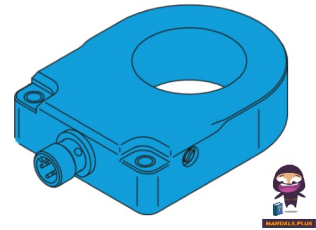


 **di-soric**  
IRSD-35P Inductive  
Ring Sensor



# di-soric IRSD-35P Inductive Ring Sensor Owner's Manual

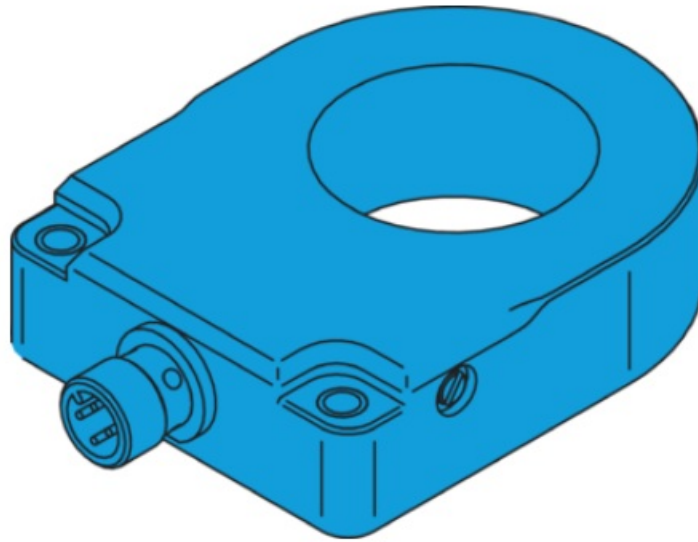
[Home](#) » [di-soric](#) » di-soric IRSD-35P Inductive Ring Sensor Owner's Manual 

## Contents

- [1 di-soric IRSD-35P Inductive Ring Sensor](#)
- [2 Specifications](#)
- [3 Product Usage Instructions](#)
- [4 DIMENSION](#)
- [5 Technical data](#)
- [6 WIRING](#)
- [7 Safety instructions](#)
- [8 MORE INFORMATION](#)
- [9 FAQ](#)
- [10 Documents / Resources](#)
  - [10.1 References](#)

 **di-soric**

**di-soric IRSD-35P Inductive Ring Sensor**



## Specifications

- **Model:** IRSD-35P-G3-B4
- **Type:** Inductive ring sensor
- **Enclosure:** Type 4X (indoor use only), 12, 13
- **Supply Class:** 2 NFPA 79 Applications only
- **Service Voltage:** 10 – 30 V DC
- **Switching Output:** Gegentakt/PNP/NPN, 100 mA, NO/NC
- **No-load Current:** 30 mA (max)
- **Speed of Parts:** 0.1 m/s (min) – 35 m/s (max)
- **Protection Type:** IP 67
- **Ambient Temperature during Operation:** Not specified

## Product Usage Instructions

### Safety Instructions:

**General Safety Notice:** WARNING! Not a safety component under 2006/42/EG and EN 61496-1/-2! May not be used for personal protection! Non-compliance can lead to death or serious injuries! Only use as directed!

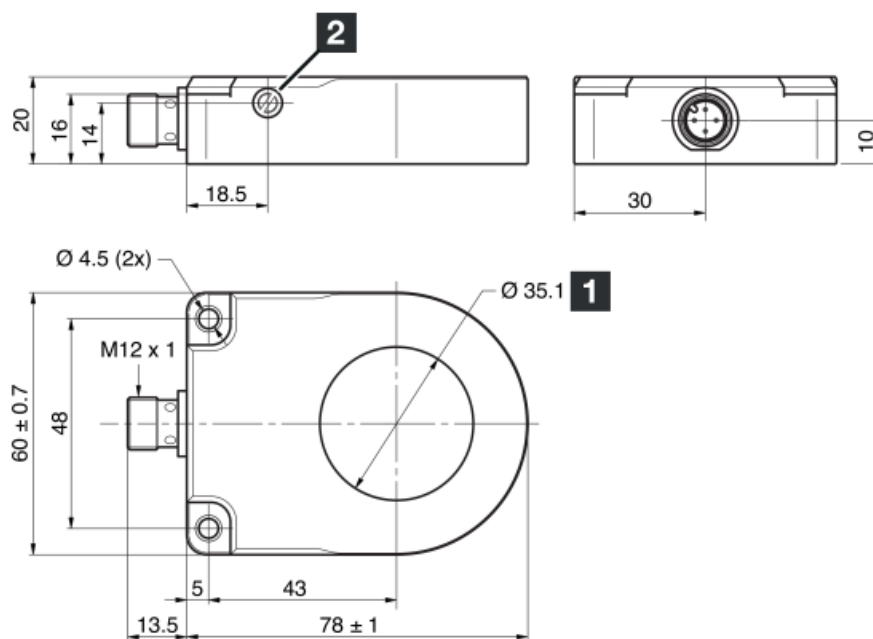
### Installation

1. Ensure the power supply voltage is within the range of 10 – 30 V DC.
2. Connect the sensor according to the switching output specifications provided.
3. Mount the sensor in a suitable location where it can detect the desired parts effectively.

### Operation

1. Power on the sensor within the specified voltage range.
2. Adjust the sensor settings if necessary based on the speed of the parts being detected.
3. Observe the switching output behavior to ensure proper functioning.

## DIMENSION



1. Ring diameter

2. sensitivity

## Technical data

Internal diameter

Service voltage

Switching output

No-load current (max.)

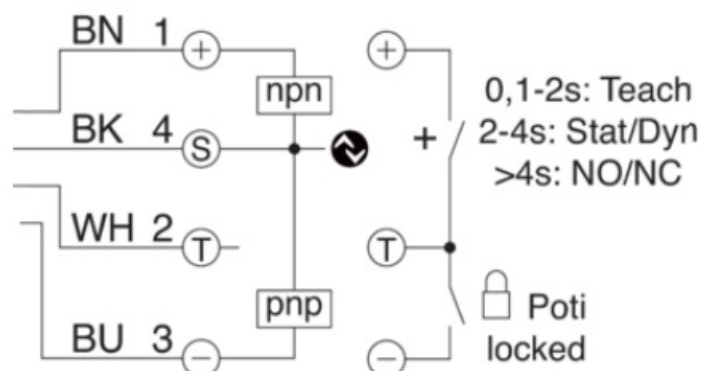
Speed of parts (min.)

Speed of parts (max.)

Protection type

Ambient temperature during operation

## WIRING



- **BK:** black

- **BN:** brown
- **BU:** blue
- **WH:** white

## Safety instructions

### General safety notice

**WARNING!** Not a safety component pursuant to 2006/42/EG and EN 61496-1/-2! May not be used for personal protection! Non-compliance can lead to death or serious injuries! Only use as directed!

As of 05/17/24, subject to change

Enclosure Type 4X (indoor use only), 12, 13 Supply Class 2

NFPA 79 Applications only. For adapters providing field wiring instructions refer to product information or customer support.

## MORE INFORMATION

- di-soric GmbH & Co. KG Steinbeisstraße 6
- DE-73660 Urbach Germany
- **Tel:** +49 (0) 7181/9879-0
- [info@di-soric.com](mailto:info@di-soric.com)
- [www.di-soric.com](http://www.di-soric.com)

## SCANNER



## FAQ

- **Q: Can the inductive ring sensor be used outdoors?**
  - **A:** No, the sensor is designed for indoor use only.
- **Q: What is the maximum speed of parts that the sensor can detect?**
  - **A:** The sensor can detect parts moving at speeds up to 35 m/s.

## Documents / Resources

	<p><a href="#">di-soric IRSD-35P Inductive Ring Sensor</a> [pdf] Owner's Manual  IRSD-35P-G3-B4, 213793, IRSD-35P Inductive Ring Sensor, IRSD-35P, Inductive Ring Sensor, Ring Sensor</p>
--	---

## References

- [!\[\]\(83eb2aa26b610eb6a9dca7cf4702d681\_img.jpg\) \*\*soric.com\*\*](https://www.di-soric.com)
- [!\[\]\(94dfacbf937cdd7da4837a6fcd8fc785\_img.jpg\) \*\*di-soric – Solutions. Clever. Practical.\*\*](#)
- [\*\*User Manual\*\*](#)

#### Manuals+, Privacy Policy

This website is an independent publication and is neither affiliated with nor endorsed by any of the trademark owners. The "Bluetooth®" word mark and logos are registered trademarks owned by Bluetooth SIG, Inc. The "Wi-Fi®" word mark and logos are registered trademarks owned by the Wi-Fi Alliance. Any use of these marks on this website does not imply any affiliation with or endorsement.