



di-soric IRSD-35-G3-B4 Inductive Ring Sensor Owner's Manual

[Home](#) » [di-soric](#) » di-soric IRSD-35-G3-B4 Inductive Ring Sensor Owner's Manual 

Contents

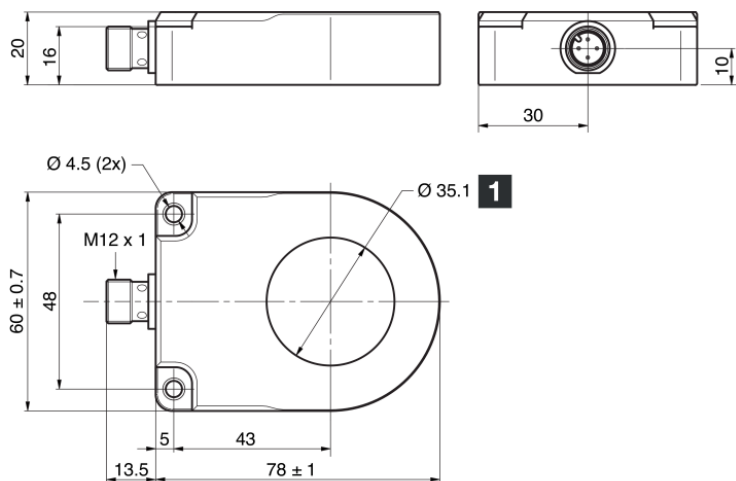
- [1 di-soric IRSD-35-G3-B4 Inductive Ring Sensor Owner's Manual](#)
- [2 Inductive ring sensor](#)
- [3 DIMENSION](#)
- [4 Safety instructions](#)
- [5 Documents / Resources](#)
 - [5.1 References](#)
- [6 Related Posts](#)

di-soric IRSD-35-G3-B4 Inductive Ring Sensor Owner's Manual

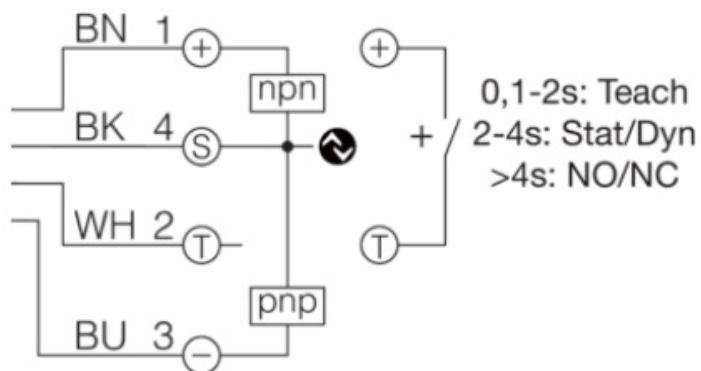


Inductive ring sensor

DIMENSION



black blue brown white



Ring diameter

Technical data	+20°C, 24 V DC
Internal diameter	35,1 mm / 35.1 mm / 35,1 mm
Service voltage	10 ... 30 V DC
Switching output	Gegentakt/PNP/NPN, 100 mA, NO/NC / Push-pull/ PN P/NPN, 100 mA, NO/NC / Push-pull/PNP/NPN, 100 m A, NO/NC
No-load current (max.)	30 mA
Speed of parts (min.)	0,1 m/s / 0.1 m/s / 0,1 m/s
Speed of parts (max.)	35 m/s
Protection type	IP 67
Ambient temperature during operation	-25 ... +70 °C

Safety instructions

General safety notice



WARNING! Not a safety component pursuant to 2006/42/EG and EN 61496-1/-2! May not be used for personal protection! Non-compliance can lead to death or serious injuries! Only use as directed!

di-sorbic GmbH & Co. KG Steinbeisstraße 6 DE-73660 Orbach Germany

Tel: +49 (0) 7181/9879-0

info@di-soric.com · www.di-soric.com

213672



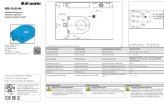
As of 05/17/24, subject to change



Enclosure Type 4X (indoor use only), 12, 13 Supply Class 2 NFPA 79 Applications only. For adapters providing field wiring means refer to product information or customer support.



Documents / Resources

	di-soric IRSD-35-G3-B4 Inductive Ring Sensor [pdf] Owner's Manual IRSD-35-G3-B4, 213672, IRSD-35-G3-B4 Inductive Ring Sensor, IRSD-35-G3-B4, Inductive Ring Sensor, Ring Sensor, Sensor
---	--

References

- di-soric.com
- [di-soric – Solutions. Clever. Practical.](#)
- [User Manual](#)

[Manuals+](#), [Privacy Policy](#)

This website is an independent publication and is neither affiliated with nor endorsed by any of the trademark owners. The "Bluetooth®" word mark and logos are registered trademarks owned by Bluetooth SIG, Inc. The "Wi-Fi®" word mark and logos are registered trademarks owned by the Wi-Fi Alliance. Any use of these marks on this website does not imply any affiliation with or endorsement.