

**di-soric**

**IRSD-15P-  
G3-B4  
Inductive  
Ring  
Sensor**



## di-soric IRSD-15P-G3-B4 Inductive Ring Sensor Instruction Manual

[Home](#) » [di-soric](#) » di-soric IRSD-15P-G3-B4 Inductive Ring Sensor Instruction Manual 

### Contents

- 1 di-soric IRSD-15P-G3-B4 Inductive Ring Sensor
- 2 Product Usage Instructions
- 3 FAQ
- 4 DIMENSIONS
- 5 WIRING
- 6 SPECIFICATION
- 7 Safety instructions
- 8 Documents / Resources
  - 8.1 References

**di-soric**

### di-soric IRSD-15P-G3-B4 Inductive Ring Sensor



### Specifications

- **Internal Diameter:** 15.1 mm

- **Service Voltage:** 10 – 30 V DC
- **Switching Output:** Gegentakt/PNP/NPN, 100 mA, NO/NC / Push-pull/PNP/NPN, 100 mA, NO/NC / Push-pull/PNP/NPN, 100 mA, NO/NC
- **No-load Current (max.):** 30 mA
- **Speed of Parts (min.):** 0.1 m/s
- **Speed of Parts (max.):** 35 m/s
- **Protection Type:** IP 67
- **Ambient Temperature during Operation:** Not specified

## Product Usage Instructions

### Installation:

Ensure the sensor is mounted securely in the desired location with the specified internal diameter clearance. Connect the service voltage within the range of 10-30 V DC according to the provided wiring diagram.

### Configuration:

Adjust the switching output settings based on your application requirements. Refer to the product information for detailed instructions on configuring the sensor for specific functions.

### Operation:

Once installed and configured, the sensor will detect objects within the specified speed range and activate the switching output accordingly. Monitor the sensor's performance during operation for any irregularities.

## FAQ

### Q: Is this sensor suitable for outdoor use?

**A:** No, this sensor is designated for indoor use only as indicated by its Enclosure Type 4X rating.

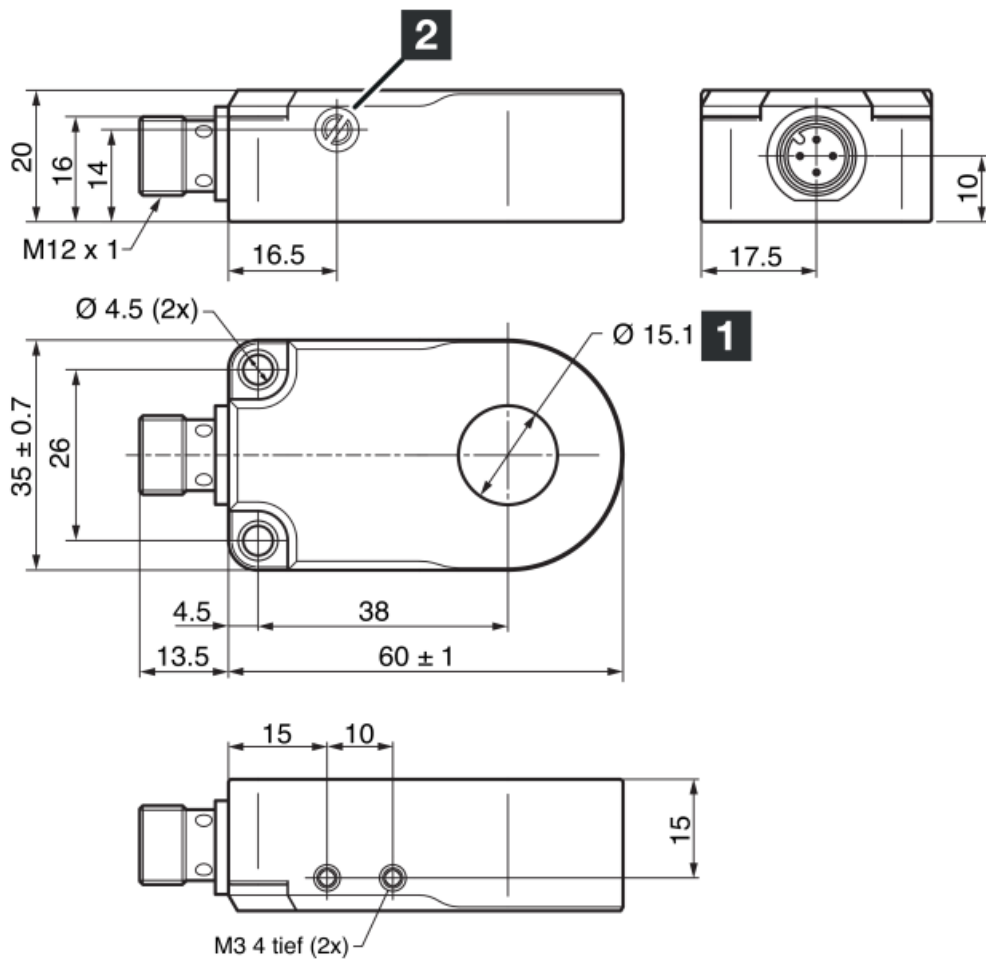
### Q: What is the maximum current rating for the switching output?

**A:** The switching output can handle a maximum current of 100 mA.

### Q: Can I adjust the sensitivity of the sensor?

**A:** Yes, you can adjust the sensor's sensitivity by configuring the switching output settings based on your application needs.

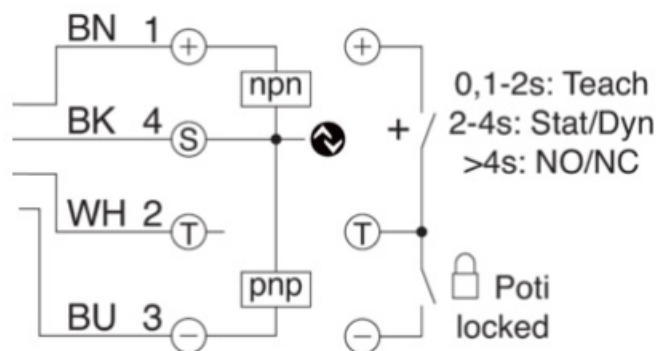
## DIMENSIONS



1. Ring diameter

2. sensitivity

## WIRING



- **BK:** black
- **BN:** brown
- **BU:** blue
- **WH:** white

## SPECIFICATION

- **Technical data**  
+20°C, 24 V DC

- **Internal diameter**

15,1 mm / 15.1 mm / 15,1 mm

- **Service voltage**

10 ... 30 V DC

- **Switching output**

Gegentakt/PNP/NPN, 100 mA, NO/NC / Push-pull/PNP/NPN, 100 mA, NO/NC / Push-pull/PNP/NPN, 100 mA, NO/NC

- **No-load current (max.)**

30 mA

- **Speed of parts (min.)**

0,1 m/s / 0.1 m/s / 0,1 m/s

- **Speed of parts (max.)**

35 m/s

- **Protection type**

IP 67

- **Ambient temperature during operation**

-25 ... +70 °C

## Safety instructions

### General safety notice

**WARNING!** Not a safety component pursuant to 2006/42/EG and EN 61496-1/-2! May not be used for personal protection! Non-compliance can lead to death or serious injuries! Only use as directed!

### CONTACT

DE-73660 Urbach

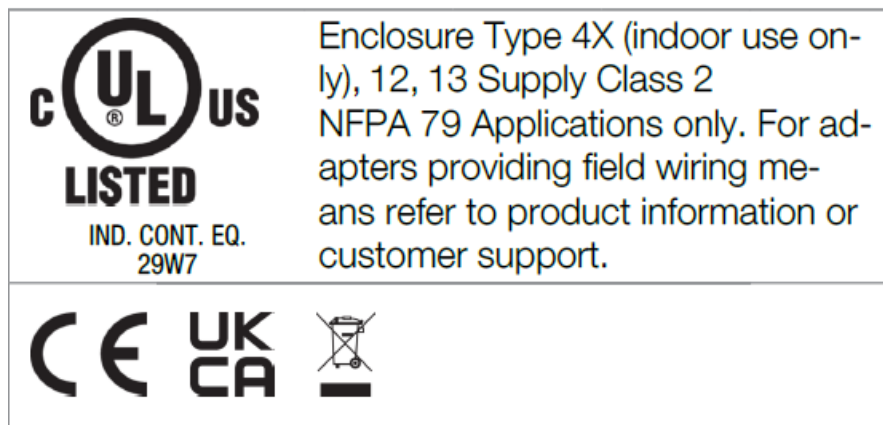
### Germany

Tel: +49 (0) 7181/9879-0

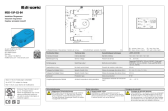
[info@di-soric.com](mailto:info@di-soric.com) · [www.di-soric.com](http://www.di-soric.com)

Stand 17.05.24, Änderungen vorbehalten As of 05/17/24, subject to change

État 17.05.24, sous réserve de modifications



## Documents / Resources



**[di-soric IRSD-15P-G3-B4 Inductive Ring Sensor](#)** [pdf] Instruction Manual  
IRSD-15P-G3-B4, 213789, IRSD-15P-G3-B4 Inductive Ring Sensor, IRSD-15P-G3-B4,  
Inductive Ring Sensor, Ring Sensor, Sensor

## References

- [sor ic.com](https://www.soric.com)
- [di-soric – Solutions. Clever. Practical.](#)
- [User Manual](#)

### Manuals+, Privacy Policy

This website is an independent publication and is neither affiliated with nor endorsed by any of the trademark owners. The "Bluetooth®" word mark and logos are registered trademarks owned by Bluetooth SIG, Inc. The "Wi-Fi®" word mark and logos are registered trademarks owned by the Wi-Fi Alliance. Any use of these marks on this website does not imply any affiliation with or endorsement.