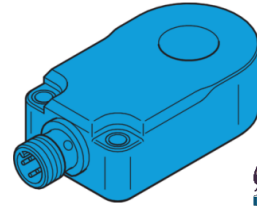


 **di-soric**

**IRSD-15-G3-B4  
Inductive Ring  
Sensor**



# di-soric IRSD-15-G3-B4 Inductive Ring Sensor Instruction Manual

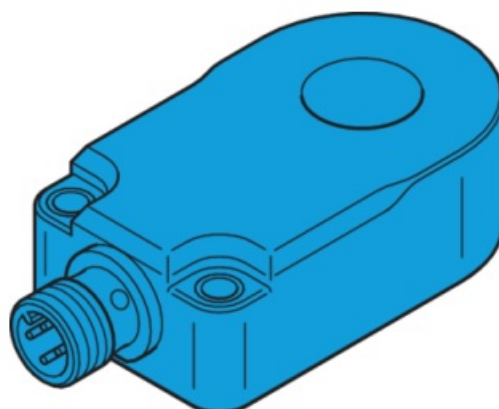
[Home](#) » [di-soric](#) » di-soric IRSD-15-G3-B4 Inductive Ring Sensor Instruction Manual 

## Contents

- [1 di-soric IRSD-15-G3-B4 Inductive Ring Sensor](#)
- [2 Specifications](#)
- [3 Product Usage Instructions](#)
- [4 FAQ](#)
- [5 Dimension](#)
- [6 Technical data](#)
- [7 Safety instructions](#)
- [8 Contact](#)
- [9 Documents / Resources](#)
  - [9.1 References](#)
- [10 Related Posts](#)

 **di-soric**

**di-soric IRSD-15-G3-B4 Inductive Ring Sensor**



## Specifications

- Internal Diameter: 15.1 mm
- Service Voltage: 10 – 30 V DC
- Switching Output: Gegentakt/PNP/NPN, 100 mA, NO/NC
- No-load Current (max.): 30 mA
- Speed of Parts (min.): 0.1 m/s
- Speed of Parts (max.): 35 m/s
- Protection Type: IP 67
- Ambient Temperature during Operation: Not specified

## Product Usage Instructions

### Installation:

1. Ensure the power supply is within the specified range of 10 – 30 V DC.
2. Connect the sensor according to the provided wiring instructions.
3. Mount the sensor in a suitable location with the internal diameter aligned correctly.
4. Ensure the sensor is protected from external elements as per its IP 67 rating.

### Operation:

1. Apply power within the specified voltage range to activate the sensor.
2. Monitor the switching output for the desired response based on your application requirements.
3. Adjust the sensor position or settings if needed to optimize performance.

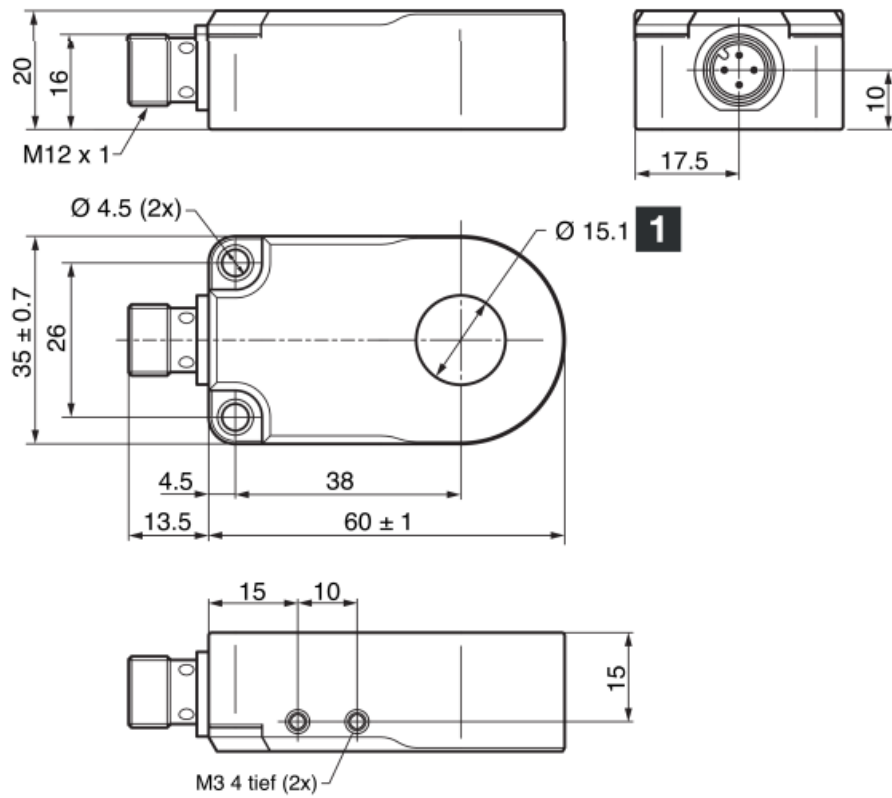
### Maintenance:

1. Regularly inspect the sensor for any signs of damage or wear.
2. Clean the sensor gently using a soft cloth if necessary to maintain proper functionality.
3. Refer to the user manual for any specific maintenance procedures recommended by the manufacturer.

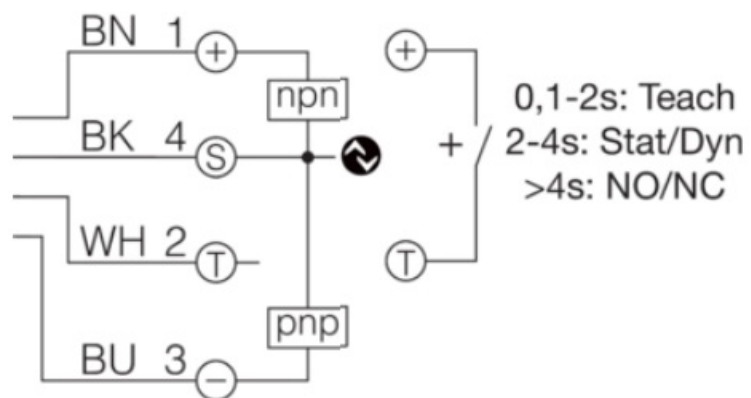
## FAQ

- **Q: Can this sensor be used outdoors?**
  - A: No, this sensor is rated for indoor use only.
- **Q: What is the maximum speed of parts this sensor can detect?**
  - A: The sensor can detect parts moving at speeds up to 35 m/s.

## Dimension



- Ring diameter



- BK: black
- BN: brown
- BU: blue
- WH: white

## Technical data

|                                      |   |
|--------------------------------------|---|
| Technical data                       | +20°C, 24 V DC  |
| Internal diameter                    | 15,1 mm / 15.1 mm / 15,1 mm   |
| Service voltage                      | 10 ... 30 V DC  |
| Switching output                     | Gegentakt/PNP/NPN, 100 mA, NO/NC / Push-pull/<br>PNP/NPN, 100 mA, NO/NC / Push-pull/PNP/NPN, 100 mA,<br>NO/NC |
| No-load current (max.)               | 30 mA   |
| Speed of parts (min.)                | 0,1 m/s / 0.1 m/s / 0,1 m/s   |
| Speed of parts (max.)                | 35 m/s  |
| Protection type                      | IP 67   |
| Ambient temperature during operation | -25 ... +70 °C  |

## Safety instructions

### General safety notice

WARNING! Not a safety component pursuant to 2006/42/EG and EN 61496-1/-2! May not be used for personal protection! Non-compliance can lead to death or serious injuries! Only use as directed!

### Contact

- di-soric GmbH & Co. KG
- Steinbeisstraße 6
- DE-73660 Urbach
- Germany
- Tel: +49 (0) 7181/9879-0
- [info@di-soric.com](mailto:info@di-soric.com)
- [www.di-soric.com](http://www.di-soric.com)



**As of 05/17/24, subject to change**

Enclosure Type 4X (indoor use only), 12, 13 Supply Class 2 NFPA 79 Applications only. For adapters providing field wiring means refer to product information or customer support

### Documents / Resources



**[di-soric IRSD-15-G3-B4 Inductive Ring Sensor](#)** [pdf] Instruction Manual  
IRSD-15-G3-B4, 213668, IRSD-15-G3-B4 Inductive Ring Sensor, IRSD-15-G3-B4, Inductive Ring Sensor, Ring Sensor, Sensor

## References

- [soric.com](#)
- [di-soric – Solutions. Clever. Practical.](#)
- [User Manual](#)

[Manuals+](#), [Privacy Policy](#)

This website is an independent publication and is neither affiliated with nor endorsed by any of the trademark owners. The "Bluetooth®" word mark and logos are registered trademarks owned by Bluetooth SIG, Inc. The "Wi-Fi®" word mark and logos are registered trademarks owned by the Wi-Fi Alliance. Any use of these marks on this website does not imply any affiliation with or endorsement.