

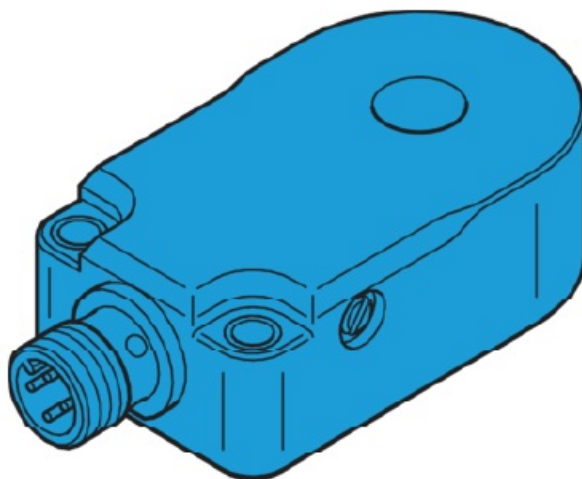
di soric IRSD-10P-G3-B4 Inductive Ring Sensor Instruction Manual

[Home](#) » [di-soric](#) » di soric IRSD-10P-G3-B4 Inductive Ring Sensor Instruction Manual 

Contents

- 1 di-soric IRSD-10P-G3-B4 Inductive Ring Sensor
- 2 DIAMETER
- 3 Technical data
- 4 Safety instructions
- 5 Specifications:
- 6 Frequently Asked Questions (FAQ):
 - 6.1 Q: Can the inductive ring sensor be used outdoors?
 - 6.2 Q: What is the maximum speed of parts that the sensor can detect?
- 7 Documents / Resources
 - 7.1 References
- 8 Related Posts

di-soric IRSD-10P-G3-B4 Inductive Ring Sensor



INSTRUCTION MANUAL

MODEL: IRSD-10P-G3-B4

di-soric GmbH & Co. KG

Steinbeisstraße 6

DE-73660 Urbach

Germany

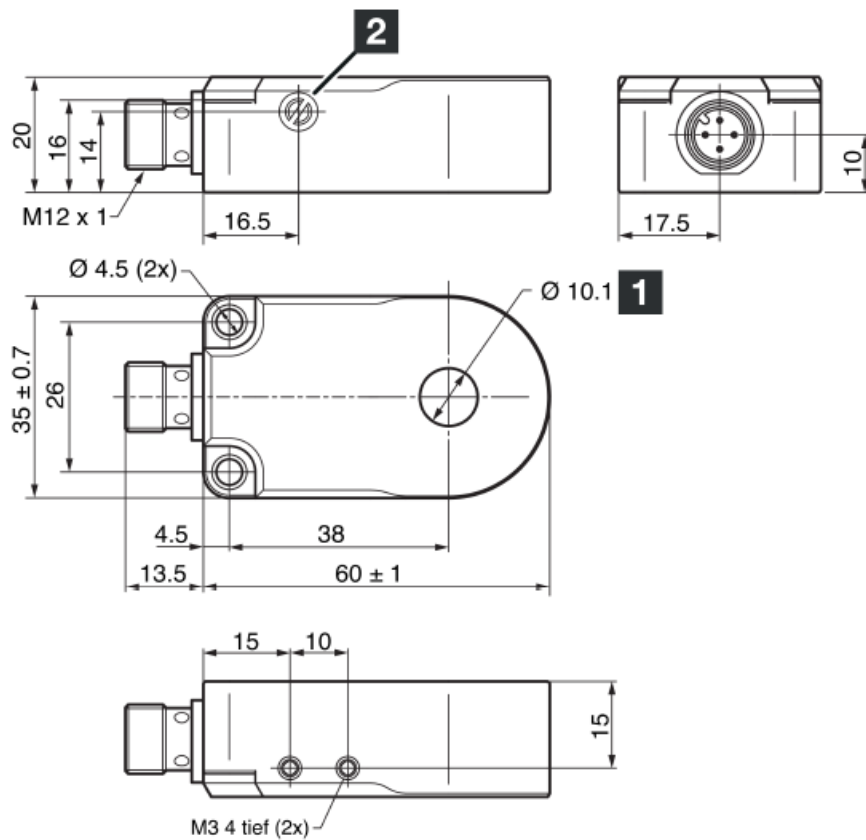
Tel: +49 (0) 7181/9879-0

info@di-soric.com · www.di-soric.com

213788

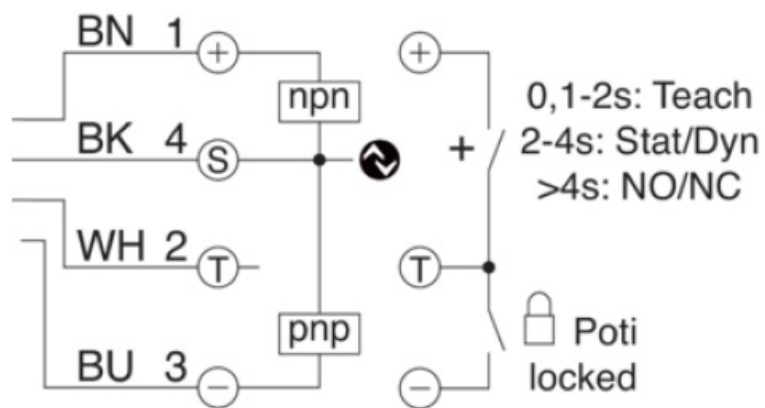


DIAMETER



1) Ring diameter

2) Sensitivity



BK : Black
 BN : braun
 BU : blue
 WH : white

Technical data

Technical data	+20°C, 24 V DC
Internal diameter	10,1 mm / 10.1 mm / 10,1 mm
Service voltage	10 ... 30 V DC
Switching output	Gegentakt/PNP/NPN, 100 mA, NO/NC / Push-pull/ PNP/NPN, 100 mA, NO/NC / Push-pull/PNP/NPN, 100 mA, NO/NC
No-load current (max.)	30 mA
Speed of parts (min.)	0,1 m/s / 0.1 m/s / 0,1 m/s
Speed of parts (max.)	35 m/s
Protection type	IP 67
Ambient temperature during operation	-25 ... +70 °C

Safety instructions

General safety notice

WARNING! Not a safety component pursuant to 2006/42/EG and EN 61496-1/-2! May not be used for personal protection! Non-compliance can lead to death or serious injuries! Only use as directed!



Specifications:

- **Model:** IRSD-10P-G3-B4
- **Type:** Inductive ring sensor
- **Enclosure:** Type 4X (indoor use only), 12, 13
- **Supply Class:** 2 NFPA 79 Applications only
- **Service Voltage:** 10-30 V DC
- **Switching Output:** Gegentakt/PNP/NPN, 100 mA, NO/NC
- **No-load Current:** 30 mA
- **Speed of Parts (min):** 0.1 m/s
- **Speed of Parts (max):** 35 m/s
- **Protection Type:** IP 67

Frequently Asked Questions (FAQ):

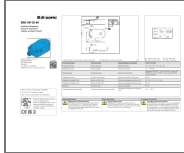
Q: Can the inductive ring sensor be used outdoors?

A: No, the sensor is designed for indoor use only.

Q: What is the maximum speed of parts that the sensor can detect?

A: The sensor can detect parts moving at a maximum speed of 35 m/s.

Documents / Resources



[di soric IRSD-10P-G3-B4 Inductive Ring Sensor](#) [pdf] Instruction Manual
IRSD-10P-G3-B4, 213788, IRSD-10P-G3-B4 Inductive Ring Sensor, IRSD-10P-G3-B4,
Inductive Ring Sensor, Ring Sensor, Sensor

References

- [sor ic.com](https://www.soric.com)
- [di-soric – Solutions. Clever. Practical.](#)
- [User Manual](#)

[Manuals+](#), [Privacy Policy](#)

This website is an independent publication and is neither affiliated with nor endorsed by any of the trademark owners. The "Bluetooth®" word mark and logos are registered trademarks owned by Bluetooth SIG, Inc. The "Wi-Fi®" word mark and logos are registered trademarks owned by the Wi-Fi Alliance. Any use of these marks on this website does not imply any affiliation with or endorsement.