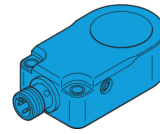


di-soric
213791-Inductive
Ring-Sensor



di-soric 213791 Inductive Ring Sensor Instruction Manual

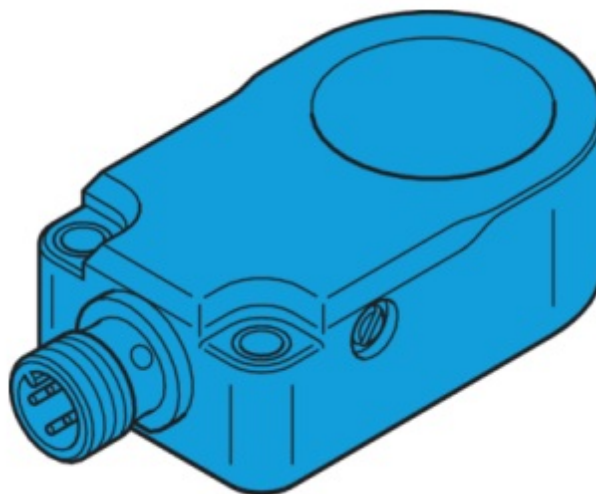
[Home](#) » [di-soric](#) » di-soric 213791 Inductive Ring Sensor Instruction Manual 

Contents

- [1 di-soric 213791 Inductive Ring Sensor](#)
- [2 Product Usage Instructions](#)
- [3 Ring diameter](#)
- [4 Documents / Resources](#)
 - [4.1 References](#)
- [5 Related Posts](#)

di-soric

di-soric 213791 Inductive Ring Sensor



Specifications:

- **Model:** IRSD-25P-G3-B4
- **Type:** Inductive Ring Sensor

- **Enclosure:** Type 4X (indoor use only), 12, 13
- **Service Voltage:** 10-30 V DC
- **Switching Output:** Gegentakt/PNP/NPN, 100 mA, NO/NC
- **Internal Diameter:** 25.1 mm
- **No-load Current:** 30 mA (max.)
- **Speed of Parts:** 0.1 m/s (min.) – 35 m/s (max.)
- **Protection Type:** IP 67

Product Usage Instructions

Safety Instructions:

General Safety Notice: WARNING! Not a safety component pursuant to 2006/42/EG and EN 61496-1/-2! May not be used for personal protection! Non-compliance can lead to death or serious injuries! Only use as directed!

Installation:

1. Ensure the sensor is mounted securely in the desired location.
2. Connect the sensor to a power supply within the specified voltage range (10-30 V DC).
3. Verify proper wiring of the switching output according to the provided information.

Operation:

Once installed, the sensor will detect objects passing through its detection range. The switching output will change state based on the presence or absence of objects.

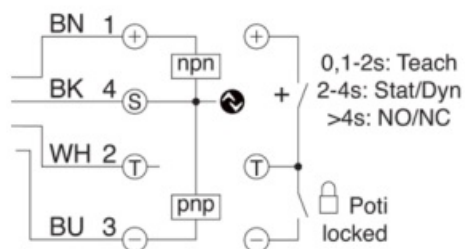
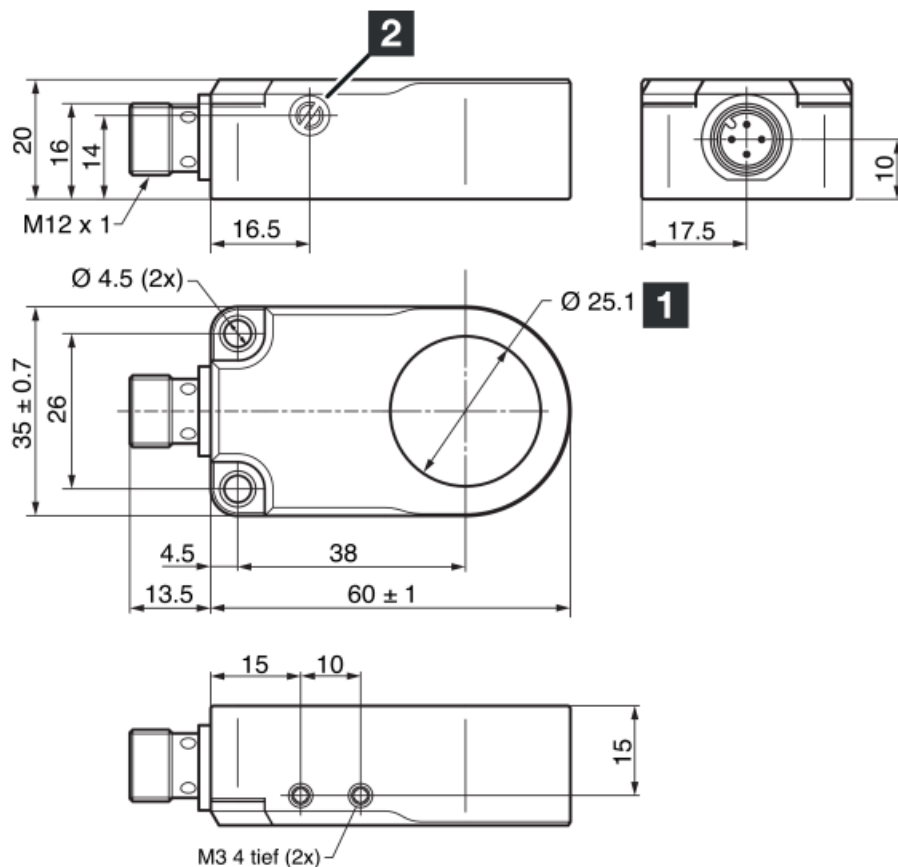
Maintenance:

Regularly check the sensor for any signs of damage or contamination. Clean the sensor if necessary to ensure proper functioning.

FAQ

- **Q: Can the sensor be used outdoors?**
 - **A:** No, the sensor is rated for indoor use only.
- **Q: What is the maximum speed of parts that can be detected?**
 - **A:** The sensor can detect parts moving at speeds up to 35 m/s.

Ring diameter



- **K:** black
- **BN:** brown
- **BU:** blue
- **WH:** white

Technical data: +20°C, 24 V DC

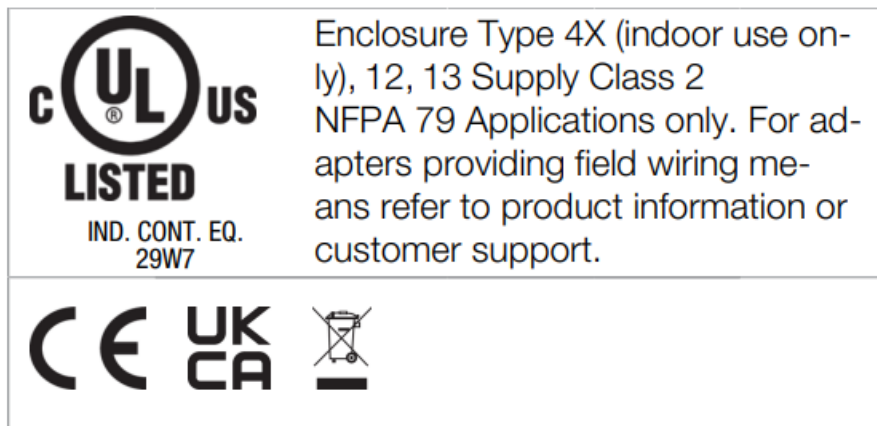
- **Internal diameter:** 25,1 mm / 25.1 mm / 25,1 mm
- **Service Voltage;** 10 ... 30 V DC
- **Switching output:** Gegentakt/PNP/NPN, 100 mA, NO/NC / Push-pull PNP/NPN, 100 mA, NO/NC / Push-pull/PNP/NPN 100 mA, NO/NC
- **No-load current (max.):** 30 mA
- **Speed of parts (min.):** 0,1 m/s / 0.1 m/s / 0,1 m/s
- **Speed of parts (max.):** 35 m/s
- **Protection type:** IP 67
- **Ambient temperature during operation:** -25 ... +70 °C

Safety instructions

General safety notice

WARNING! Not a safety component pursuant to 2006/42/EG and EN 61496-1/-2! May not be used for personal protection! Non-compliance can lead to death or serious injuries! Only use as directed!

As of 05/17/24, subject to change



di-soric GmbH & Co. KG



- Steinbeisstraße 6 DE-73660 Urbach Germany
- **Tel:** +49 (0) 7181/9879-0
- info@di-soric.com
- www.di-soric.com

Documents / Resources

	di-soric 213791 Inductive Ring Sensor [pdf] Instruction Manual IRSD-25P-G3-B4, 213791, 213791 Inductive Ring Sensor, 213791, Inductive Ring Sensor, Ring Sensor, Sensor
---	--

References

- di-soric.com
- [di-soric – Solutions. Clever. Practical.](#)
- [User Manual](#)

