



## DGL Group BAPPTK2 Vibe E-Ssential Color Changing Light Bulb App Controlled Instruction Manual

[Home](#) » [DGL GROUP](#) » DGL Group BAPPTK2 Vibe E-Ssential Color Changing Light Bulb App Controlled Instruction Manual 

### Contents

- 1 DGL Group BAPPTK2 Vibe E-Ssential Color Changing Light Bulb App Controlled Instruction Manual
- 2 1. Features
- 3 2. Download Smart Life
- 4 3. Log in I Register an account
- 5 4. App Connection
- 6 5. Timer Mode
- 7 6. Interface Introduction
- 8 7. Remote Diagram
- 9 Documents / Resources
- 9.1 References

**DGL Group BAPPTK2 Vibe E-Ssential Color Changing Light Bulb App Controlled Instruction Manual**



## Operation Manual FB-BAPP

### 1. Features

- Socket Type: E26 Standard • Voltage: AC 100-240V
- Wattage: 1.5W • Light Color: RGB
- Remote Battery: CR2025 (Battery included with remote) Remove safety strip before use.
- Battery voltage: 3V
- FCC ID, 2AANZBAPPTK2
- BT ID, XXXXX



Music Mode



16+ Million Colors



Timer Function



Adjustable Brightness

## 2. Download Smart Life

1. Search “Smart Life” from the Apple store or Google Play.



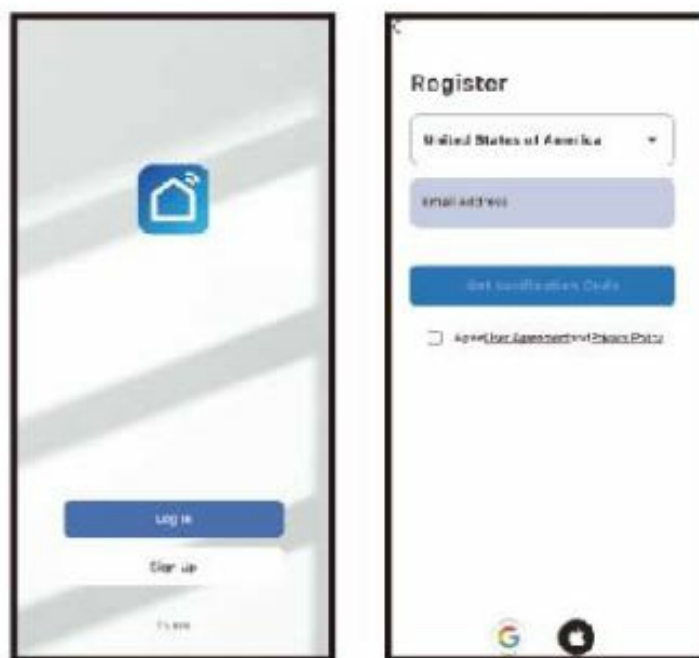
2. Scan the QR code from the label or user manual.



This app is compatible with Android 5.0 or higher

## 3. Log in | Register an account

Open the “smart Life” app, sign up for a new account or log in with an existing account.



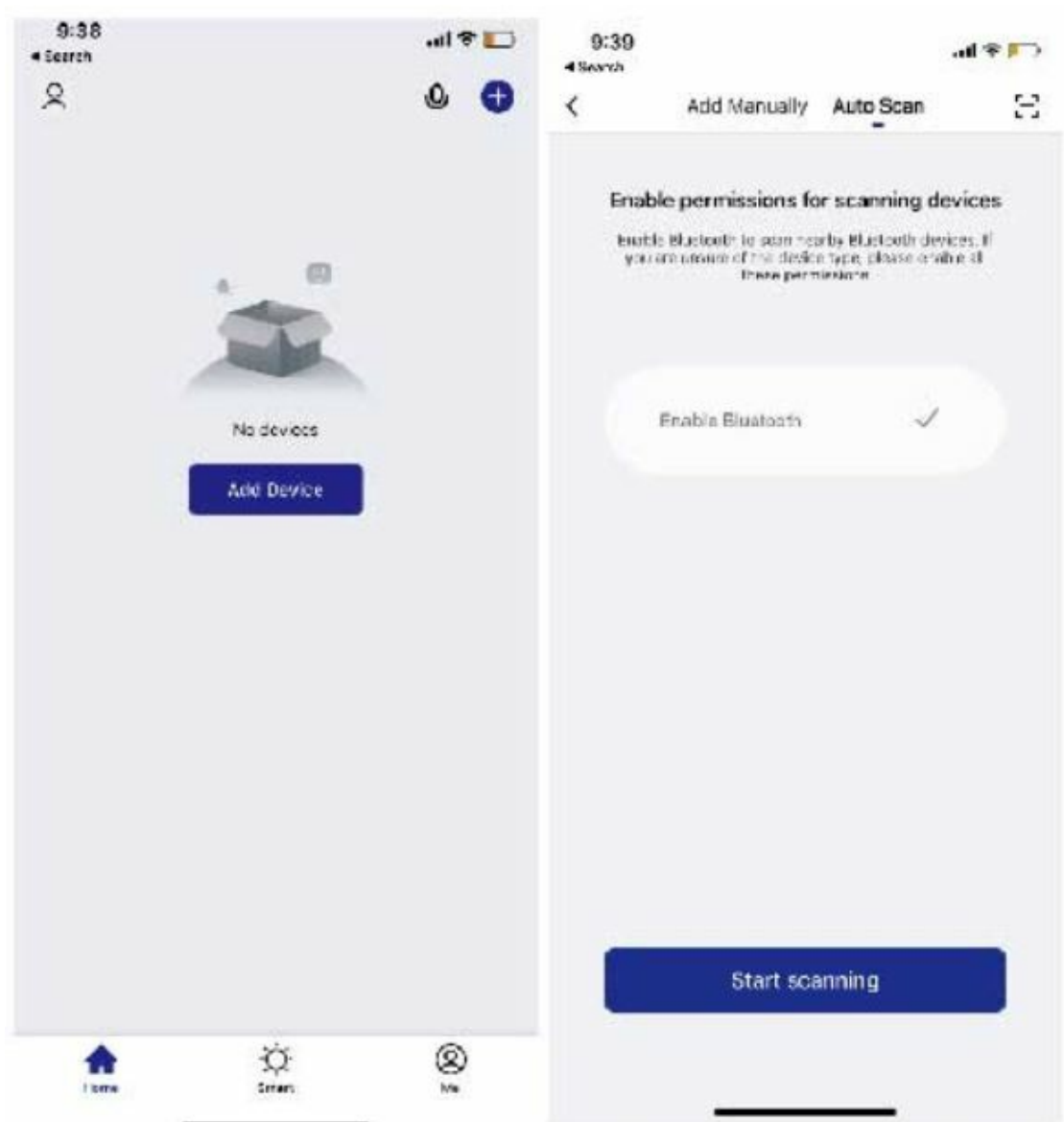
## 4. App Connection

1. Install and power on the LED bulb. select the home icon within the app.(Make sure you're Bluetooth is turned on before connecting.)

Press “+” or “Add Device”. then click the Auto Scan tab on top. If you did not turn on Bluetooth before connecting

to the LED bulb. the opp will ask you to turn on Bluetooth.

The opp will automatically search for the LED Bulb. once found. click next to connect.





## 5. Timer Mode



Timer: Turn on/ off the light automatically at a set time.

## 6. Interface Introduction

### 1. Color Light Mode



Select a color from the wheel

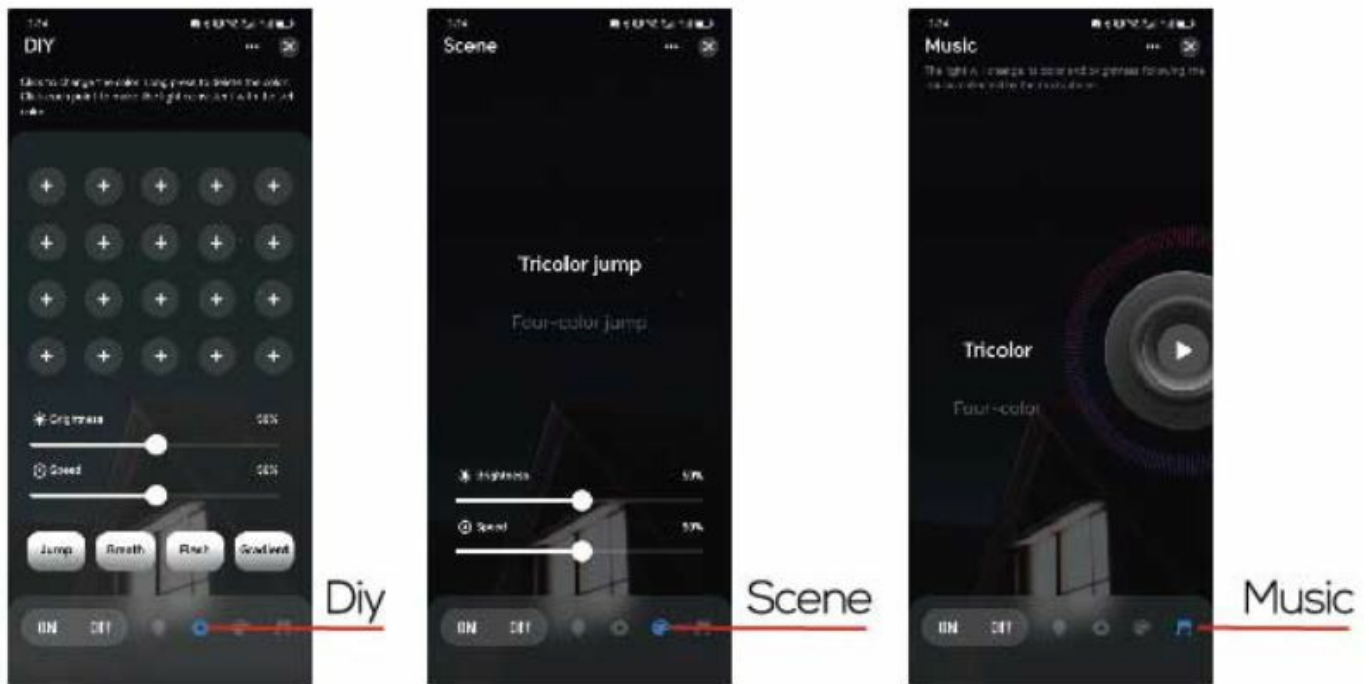
Adjust Brightness

Select from the preset colors

Power

### 2. Diy

Click to change the color. Long press to delete the color. Click each point to make the light consistent with the set color.



In order to use the bub with another smartphone, you have to remove the dexke from the currently paired smartphone. Go to the product control panel/dashboard, dick settings icon the top right then dick remove device. It Will then be ready to pair to another smartphone.

If the cu•rentjy pair smartphore is not available, the b•db needs to be turned on/off 3 times using the gnt/power switch or remote, this Will allow it to pair to another s-nartphone

### 3. Scene

Choose from various scenes where the colors fade into other colors. total 38 scenes.

### 4. Music

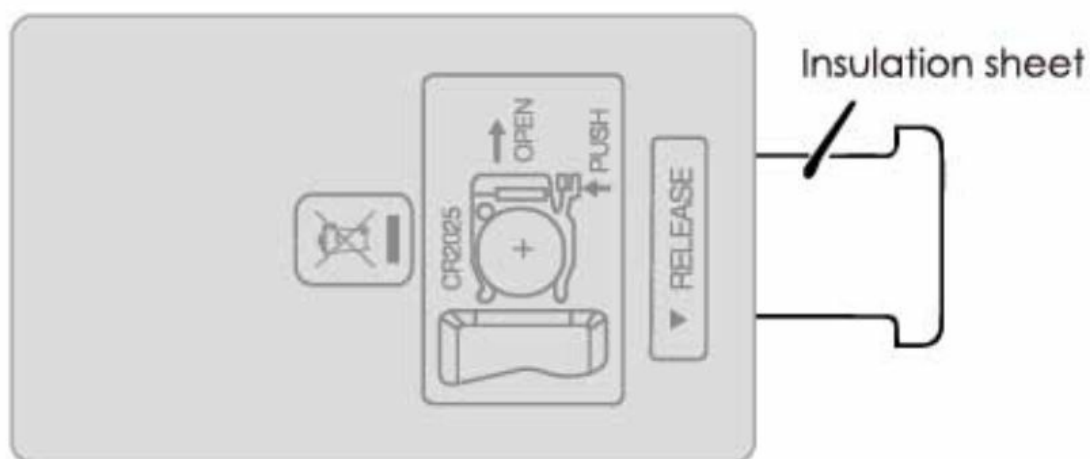
The light will change its color and brightness following the music collected by the microphone.

## 7. Remote Diagram



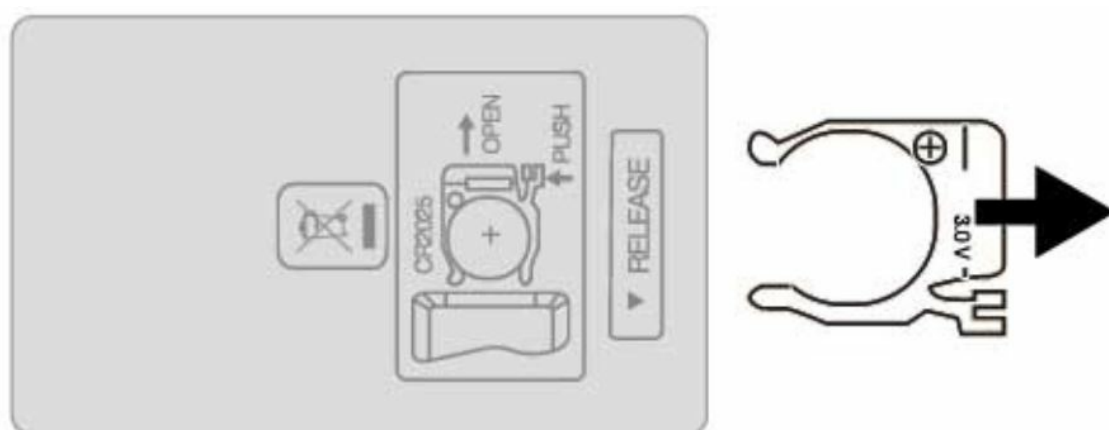
## PREPARING THE REMOTE CONTROL

The battery has been pre-loaded into the battery compartment for your convenience.  
When using the remote for the first time, pull out the insulation sheet.

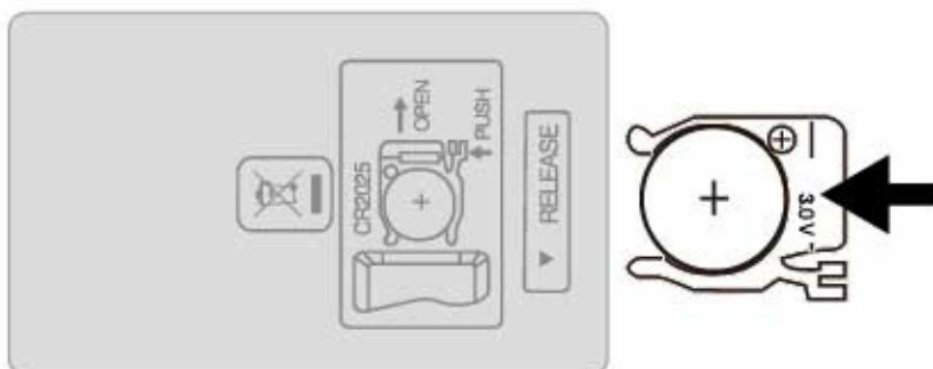
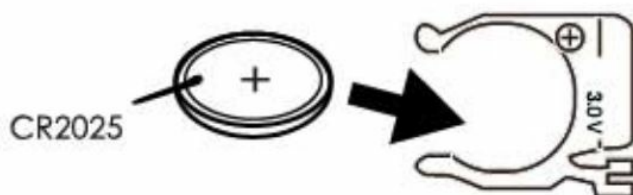


### REPLACING THE BATTERY IN REMOTE

Remove the rear battery compartment door and open the battery compartment.



Insert a new CR202S battery into the compartment by matching the correct polarity. Replace the battery compartment and secure door with the screw.







#### WARNING: TO AVOID BATTERY LEAKAGE

1. Be sure to insert the battery correctly, and always follow battery manufacturers' instructions.
2. Always remove a weak or dead battery from the product.
3. Remove the battery if the product is left unused for a long period of time.



#### WARNING: TO AVOID BATTERY LEAKAGE

1. The batteries used with this product are small parts and should be kept away from small children who still put things in their mouths. If they are swallowed, promptly see a doctor and have the doctor phone American Association of Poison Control Centers (1-[800-222-1222](tel:800-222-1222)).
2. Always purchase the correct size and grade of battery most suitable for intended use.
3. Do not mix old and new batteries, alkaline, standard (Carbon-Zinc) or rechargeable (Nickel-cadmium) batteries.
4. Clean the battery contacts and those of the device prior to battery installation.
5. Ensure the batteries are installed correctly with the regard to polarity(+ and -).
6. Always remove batteries if consumed or if product is to be left unused for a long time.



#### CAUTION:



LED Radiation DO NOT STARE INTO BEAM.

Class 2 LED Product

#### FCC Statement

This device complies with part 15 of the FCC Rules.

Operation is subject to the following two conditions: (1)

This device may not cause harmful interference, and (2) this device must accept any interference received, including interference that may cause undesired operation.

Please note that changes or modifications not expressly approved by the party responsible for compliance could void the user's authority to operate the equipment

#### FCC INSTRUCTIONS FOR A CLASS B DIGITAL DEVICE OR PERIPHERAL

**Note:** This equipment has been tested and found to comply with the limits for a Class B digital device, pursuant to part 15 of the FCC Rules. These limits are designed to provide reasonable protection against harmful interference in a residential installation. This equipment generates, uses and can radiate radio frequency energy and, if not installed and used in accordance with the instructions, may cause harmful interference to radio communications. However, there is no guarantee that interference will not occur in a particular installation. If this equipment does cause harmful interference to radio or television reception, which can be determined by turning the equipment off and on, the user is encouraged to try to correct the interference by one or more of the following measures:

- Reorient or relocate the receiving antenna.
- Increase the separation between the equipment and receiver.
- Connect the equipment into an outlet on a circuit different from that to which the receiver is connected.

- Consult the dealer or an experienced radio/TV technician for help.

Remove and immediately recycle or dispose of used batteries according to local regulations and keep away from children. Do NOT dispose of batteries in household trash or incinerate.

Even used batteries may cause severe injury or death.

Call a local poison control center for treatment information.

Non-rechargeable batteries are not to be recharged.

Do not force discharge, recharge, disassemble, heat above 710C or incinerate. Doing so may result in injury due to venting, leakage or explosion resulting in chemical burns.

Ensure the batteries are installed correctly according to polarity (+ and -).

Do not mix old and new batteries, different brands or types of batteries, such as alkaline, carbon-zinc, or rechargeable batteries.

Remove and immediately recycle or dispose of batteries from equipment not used for an extended period of time according to local regulations.

Always completely secure the battery compartment. If the battery compartment does not close securely, stop using the product, remove the batteries, and keep them away from children.



## WARNING



### • INGESTION HAZARD:

This product contains a button cell or coin battery.

- DEATH or serious injury can occur if ingested.
- A swallowed button cell or coin battery can cause Internal Chemical Burns in as little as 2 hours
- KEEP new and used batteries OUT OF REACH of CHILDREN
- Seek immediate medical attention if a battery is suspected to be swallowed or inserted inside any part of the body.

Company name: DGL Group, LTD.

Address: 2045 Lincoln Highway, Edison, NJ, 08817, USA

www.dglusa.com

Tracking number: DG043024

**Read More About This Manual & Download PDF:**

## Documents / Resources



[DGL Group BAPPTK2 Vibe E-Ssential Color Changing Light Bulb App Controlled](#) [pdf] Instruction Manual  
BAPPTK2, BAPPTK2 Vibe E-Ssential Color Changing Light Bulb App Controlled, Vibe E-Ssential Color Changing Light Bulb App Controlled, Color Changing Light Bulb App Controlled, Changing Light Bulb App Controlled, Bulb App Controlled

## References

- [User Manual](#)

[Manuals+](#), [Privacy Policy](#)

This website is an independent publication and is neither affiliated with nor endorsed by any of the trademark owners. The "Bluetooth®" word mark and logos are registered trademarks owned by Bluetooth SIG, Inc. The "Wi-Fi®" word mark and logos are registered trademarks owned by the Wi-Fi Alliance. Any use of these marks on this website does not imply any affiliation with or endorsement.