



DFROBOT SEN0189 Turbidity Sensor User Manual

[Home](#) » [DFROBOT](#) » DFROBOT SEN0189 Turbidity Sensor User Manual 

Contents

- [1 FROBOT SEN0189 Turbidity Sensor](#)
- [2 Introduction](#)
- [3 Specification](#)
- [4 Connection Diagram](#)
- [5 Documents / Resources](#)
- [6 Related Posts](#)



FROBOT SEN0189 Turbidity Sensor



Introduction

The gravity arduino turbidity sensor detects water quality by measuring the levels of turbidity. It uses light to detect suspended particles in water by measuring the light transmittance and scattering rate, which changes with the amount of total suspended solids (TSS) in water. As the TSS increases, the liquid turbidity level increases. Turbidity sensors are used to measure water quality in rivers and streams, wastewater and effluent measurements, control instrumentation for settling ponds, sediment transport research and laboratory measurements.

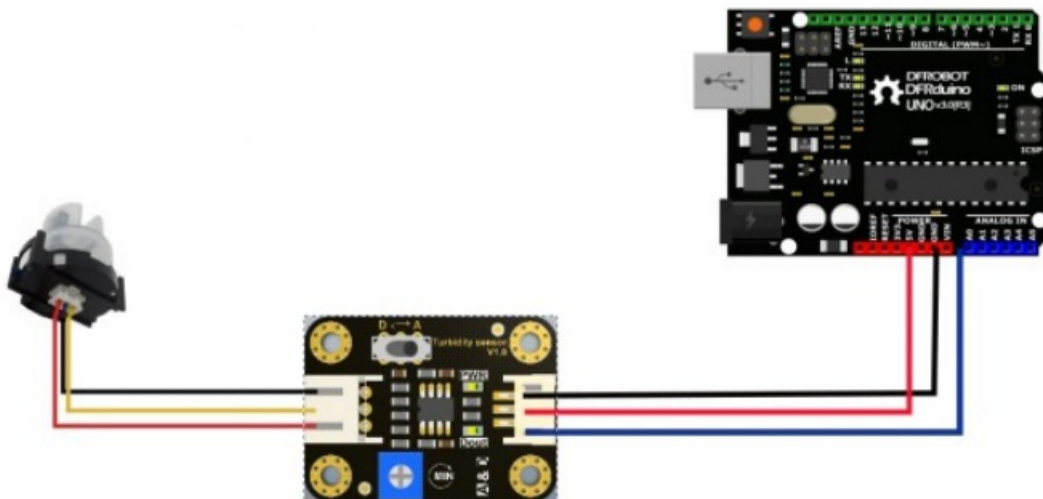
This liquid sensor provides analog and digital signal output modes. The threshold is adjustable when in digital signal mode. You can select the mode according to your MCU.

Note: The top of probe is not waterproof.

Specification

- Operating Voltage: 5V DC
- Operating Current: 40mA (MAX)
- Response Time : <500ms
- Insulation Resistance: 100M (Min)
- Output Method:
- Analog output: 0-4.5V
- Digital Output: High/Low level signal (you can adjust the threshold value by adjusting the potentiometer)
- Operating Temperature: 5°C~90°C
- Storage Temperature: -10°C~90°C
- Weight: 30g
- Adapter Dimensions: 38mm*28mm*10mm/1.5inches *1.1inches*0.4inches

Connection Diagram



Interface Description:

1. "D/A" Output Signal Switch
 1. Signal Output, the output value will decrease when in liquids with a high turbidity
 2. "D": Digital Signal Output, high and low levels, which can be adjusted by the threshold potentiometer
2. Threshold Potentiometer: you can change the trigger condition by adjusting the threshold potentiometer in digital signal mode.

Examples

Here are two examples:

- Example 1 uses Analog output mode
- Example 2 uses Digital output mode

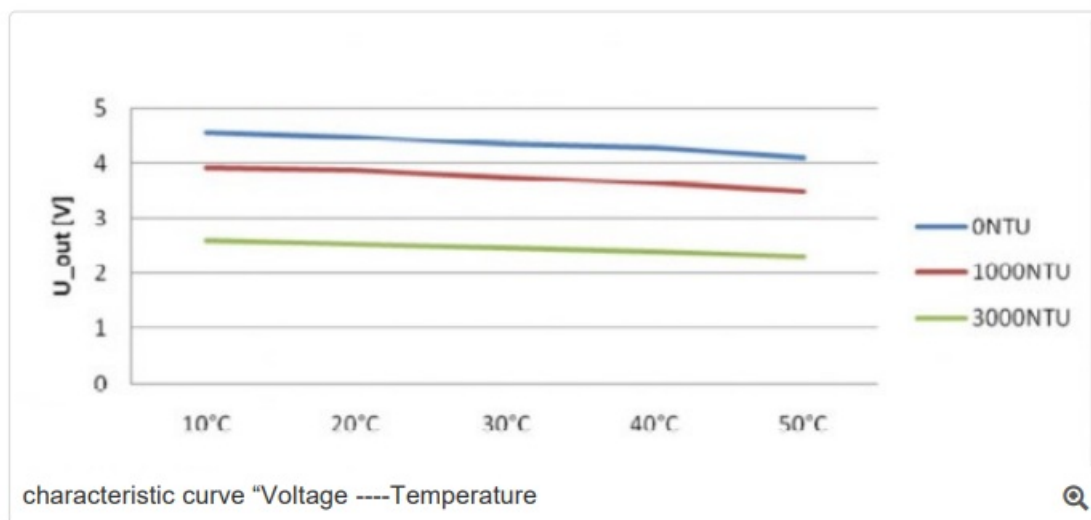
Example 1

```
void setup() {  
  Serial.begin(9600); //Baud rate: 9600  
}  
void loop() {  
  int sensorValue = analogRead(A0); // read the input on analog pin 0:  
  float voltage = sensorValue * (5.0 / 1024.0); // Convert the analog reading (which goes from 0 - 1023) to  
  a voltage (0 - 5V):  
  Serial.println(voltage); // print out the value you read:  
  delay(500);  
}
```

Example 2

```
int ledPin = 13; // Connect an LED on pin 13, or use the onboard one  
int sensor_in = 2; // Connect turbidity sensor to Digital Pin 2  
  
void setup(){  
  pinMode(ledPin, OUTPUT); // Set ledPin to output mode  
  pinMode(sensor_in, INPUT); //Set the turbidity sensor pin to input mode  
}  
  
void loop(){  
  if(digitalRead(sensor_in)==LOW){ //read sensor signal  
    digitalWrite(ledPin, HIGH); // if sensor is LOW, then turn on  
  }else{  
    digitalWrite(ledPin, LOW); // if sensor is HIGH, then turn off the led  
  }  
}
```

This is a reference chart for the mapping from the output voltage to the NTU according to different temperature. e.g. If you leave the sensor in the pure water, that is NTU < 0.5, it should output “4.1±0.3V” when temperature is 10~50°C.



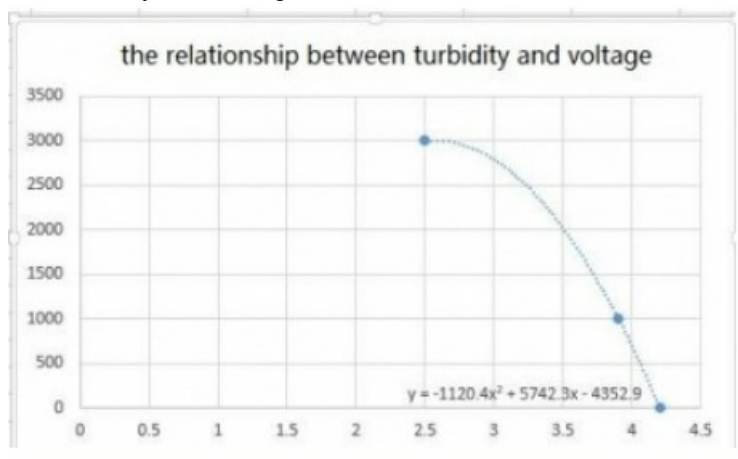
Note: In the diagram, the unit measuring turbidity is shown as NTU, also it is known as JTU (Jackson Turbidity Unit), 1JTU = 1NTU = 1 mg/L. Refer to Turbidity wikipedia

Q1. Hi, I always get 0.04 in the serial port, and there is no change, even I block the transmit tube.

A. Hi, please check the probe connection cable, if you plug it with a wrong side, it won't work.



Q2. The relationship between turbidity and voltage as flows:



For any questions/advice/cool ideas to share with us, please visit [DFRobot Forum](#)

More

- [Schematic](#)
- [Probe_Dimension](#)
- [Adapter_Dimension](#)

Get it from Gravity: [Analog Turbidity Sensor For Arduino](#)

Category: [DFRobot](#) > [Sensors & Modules](#) > [Sensors](#) > [Liquid Sensors](#)

[What links here](#) [Related changes](#) [Special pages](#) [Printable version](#) [Permanent link](#) [Page information](#)

This page was last modified on 25 May 2017, at 17:01.

Content is available under [GNU Free Documentation License 1.3](#) or later unless otherwise noted.

[Privacy policy](#) [About DFRobot Electronic Product Wiki and Tutorial: Arduino and Robot Wiki-DFRobot.com](#)

[Disclaimers](#)

Documents / Resources



[DFROBOT SEN0189 Turbidity Sensor](#) [pdf] User Manual
SEN0189 Turbidity Sensor, SEN0189, Turbidity Sensor, Sensor