



Dextra Rubix 4 Circular Downlight Installation Guide

[Home](#) » [Dextra](#) » Dextra Rubix 4 Circular Downlight Installation Guide 

Contents

- [1 Dextra Rubix 4 Circular Downlight](#)
- [2 Rubix 4](#)
- [3 Installation Instructions](#)
- [4 Maintenance Instructions](#)
- [5 Maintenance](#)
- [6 Documents / Resources](#)
- [7 Related Posts](#)

Dextra

Dextra Rubix 4 Circular Downlight



Rubix 4

The Rubix 4 is a lighting fixture designed for installation in ceilings. It operates on 220-240V / 50-60Hz with an IP20 rating.

The fixture has the following terminal labeling:

- Power
- L1
- Switched Live E
- Earth N
- Neutral
- Emergency L2
- Unswitched Live DA/AT3 DALI Autotest
- Dimming -/D1/DA Analogue/DSI/DALI
- Dimming +/D2/DA Analogue/DSI/DALI
- Switch Dim / Corridor Function L3

The Rubix 4 has a cut-out range of 225x275mm minimum to 285x285mm maximum, and requires a ceiling aperture of 295x295mm.

Installation Instructions

1. Cut out the ceiling aperture with a minimum size of 225x275mm and a maximum size of 285x285mm.
2. Fit the Rubix 4 by lifting the springs and fitting them into the cut out, the springs will then close and hold the fixture in position.
3. Make electrical connections as per terminal labeling.
4. Place the fixture into the ceiling aperture, it will self-locate on the grid.

Maintenance Instructions

1. Disconnect the fixture before undertaking any maintenance or cleaning.
2. Clean the external parts of the fixture only using a slightly damp lint-free cloth.
3. To remove the rear housing, use a pan pozi screwdriver to remove screws.
4. To open the remote gear box and remove components, use a pan pozi screwdriver.
5. Contact Dextra for assistance with spare component supply.

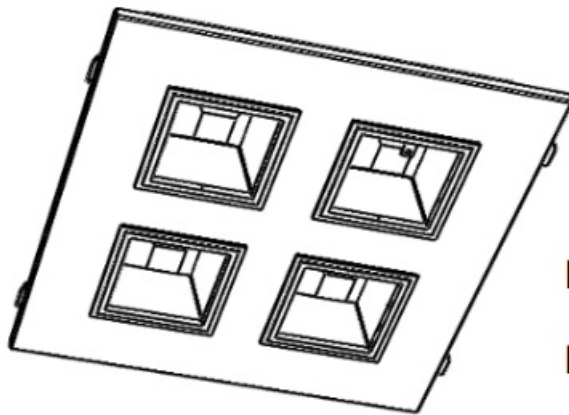
Note: The Rubix 4 includes a battery and an LED circuit module.

WARNING: Luminaire must be earthed. Risk of electric shock from LED boards if operated with cover removed. Installation / operation outside of luminaires intended scope invalidates warranty. Suitable only for domestic / light industrial / industrial applications within the scope of EN55015. Tested to compliance with BSEN 60598: specification for general requirements and tests. Must be installed by a suitably qualified person in accordance with all relevant legislation. Ambient operating temperature of 0°C to 25°C. If maximum operating temperature is exceeded luminaire will automatically dim / switch off. Terminal blocks are rated to 16A unless stated otherwise. The light source contained in this luminaire shall only be replaced by the manufacturer or his service agent or a similar qualified person.

LUMINAIRES WITH EMERGENCY PACK: When supply is isolated battery output terminals may be live if battery is connected. Isolate mains and battery before servicing. Emergency luminaires require unswitched live connection taken from same phase as switched supply. When unswitched supply is connected status indicator illuminates green, when unswitched supply is disconnected indicator extinguishes and luminaire operates in emergency mode. 24 hour charge period required before undertaking full discharge test. Emergency test sheets provided should be used to record all emergency tests. Batteries should be replaced when 3 hour duration is not met. Excessive switching of permanent live may result in premature battery failure. Battery electrolyte can be

harmful to eyes / open wounds, do not puncture, if electrolyte touches skin / eyes flush with water. Do not incinerate batteries.

RBXPFL (Pull Up) – <brackets fitted>

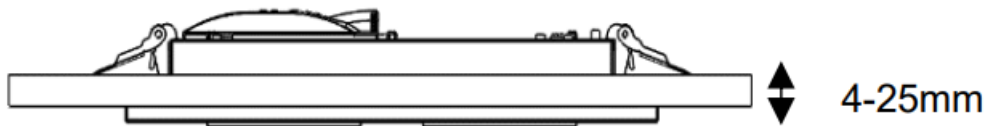


RBXPFL cut out;

Minimum: 225x275mm

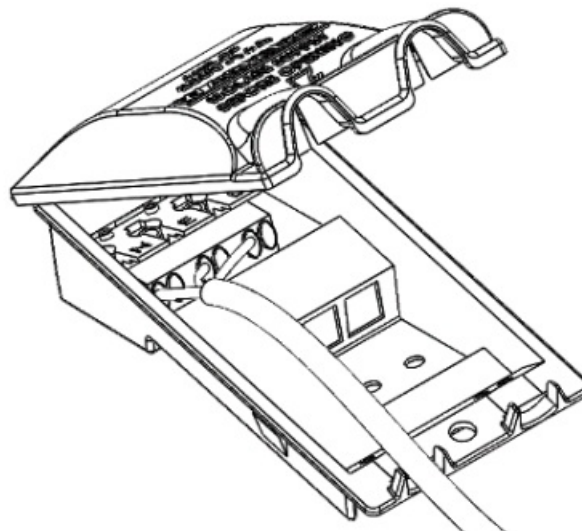
Maximum: 285x285mm

Ceiling thickness 4-25mm

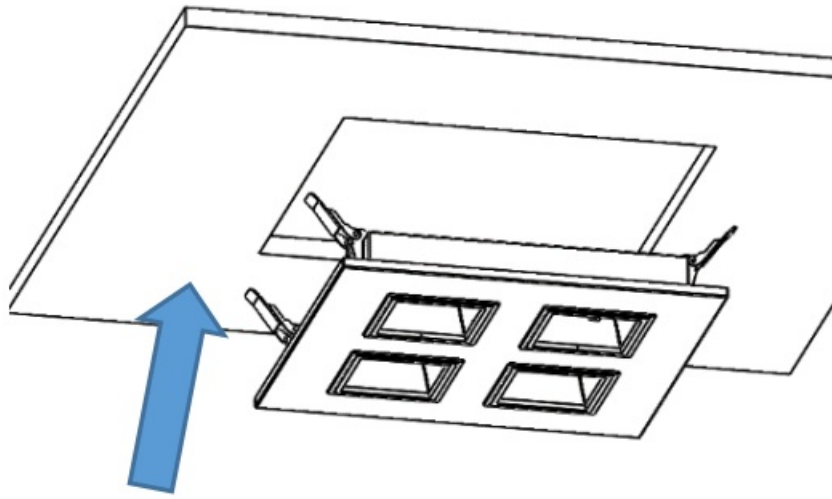


(Note – Use patress if fitting into a fibre tile)

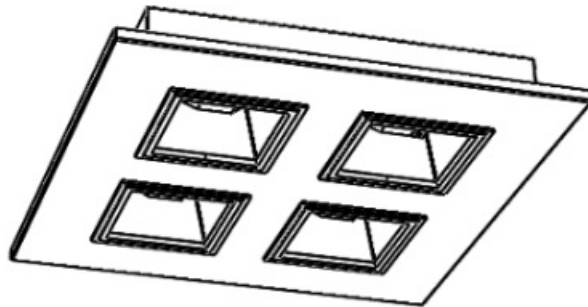
Electrical connection is made via integrated connection back-flap – allows for LEN L1 (emergency) and D1/D2 where specified.



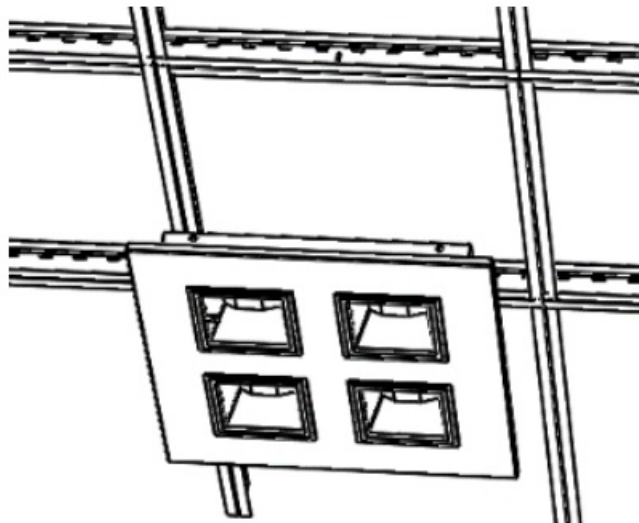
Lift Springs and fitting into cut out, the springs will then close and hold the fitting in position.



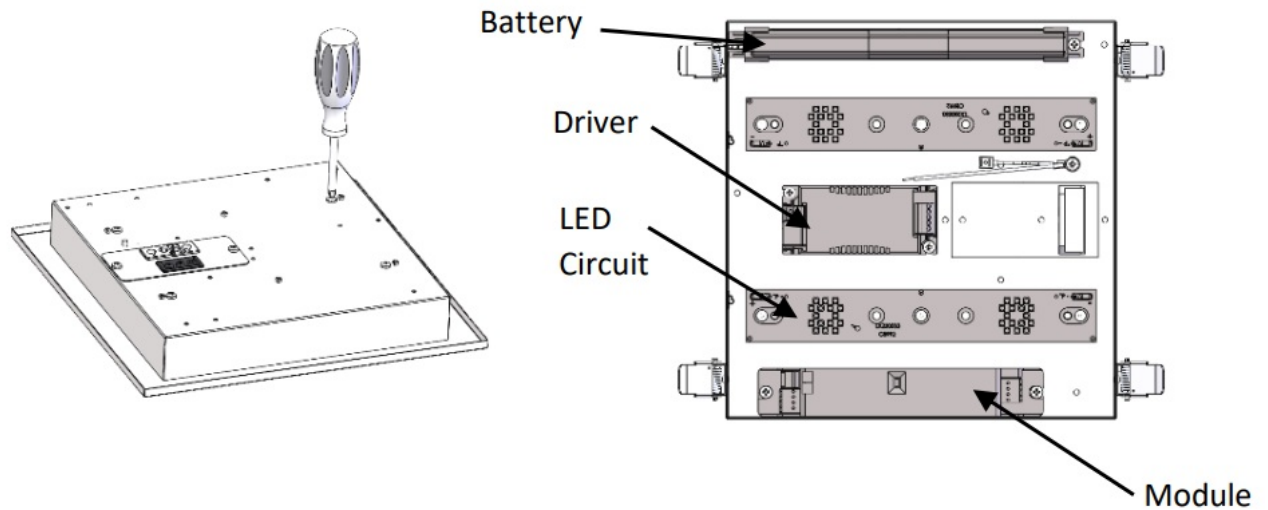
RBXRFL (Lay-In) – <No brackets>



Make electrical connection as per item 3.

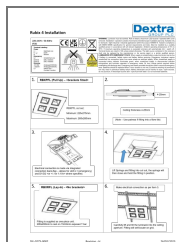


Maintenance



1. Disconnect luminaire before undertaking any maintenance or cleaning.
2. Cleaning should be undertaken on external parts of the luminaire only using a slightly damp lint free cloth.
3. To remove rear housing use a pan pozi screwdriver to remove screws.
4. Use a pan pozi screwdriver to open remote gear box and remove components.
5. Please contact Dextra for assistance with spare component supply.

Documents / Resources



[Dextra Rubix 4 Circular Downlight](#) [pdf] Installation Guide
Rubix 4 Circular Downlight, Rubix 4, Circular Downlight, Downlight