



Dextra Opus Column Small Sensor Installation Guide

[Home](#) » [Dextra](#) » Dextra Opus Column Small Sensor Installation Guide 



Contents

- [1 Opus Column Small Sensor](#)
- [2 Documents / Resources](#)
- [3 Related Posts](#)

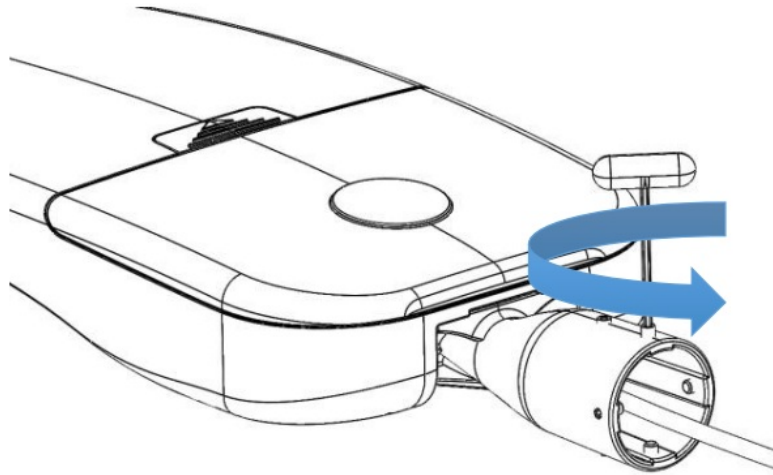
Opus Column Small Sensor

WARNING: Luminaire must be earthed. Risk of electric shock from LED boards if operated with cover removed. Installation / operation outside of luminaires intended scope invalidates warranty. Suitable only for domestic / light industrial / industrial applications within the scope of EN55015. Tested to compliance with BSEN 60598: specification for general requirements and tests. Must be installed by a suitably qualified person in accordance with all relevant legislation. Ambient operating temperature of 0°C to 25°C. If maximum operating temperature is exceeded luminaire will automatically dim / switch off. Terminal blocks are rated to 16A unless stated otherwise. The light source is non replaceable. LUMINAIRES WITH EMERGENCY PACK:

When supply is isolated battery output terminals may be live if battery is connected. Isolate mains and battery before servicing. Emergency luminaires require unswitched live connection taken from same phase as switched supply. When unswitched supply is connected status indicator illuminates green, when unswitched supply is disconnected indicator extinguishes and luminaire operates in emergency mode. 24 hour charge period required before undertaking full discharge test. Emergency test sheets provided should be used to record all emergency tests. Batteries should be replaced when 3 hour duration is not met. Excessive switching of permanent live may result in premature battery failure. Battery electrolyte can be harmful to eyes / open wounds, do not puncture, if electrolyte touches skin / eyes flush with water. Do not incinerate batteries.

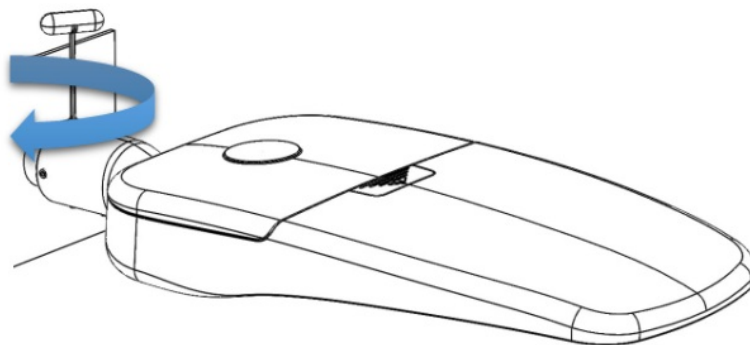
1. Using a 4mm Allen Key, loosen all the grub screws sufficiently to allow for the column diameter.

2. Fe
ot up



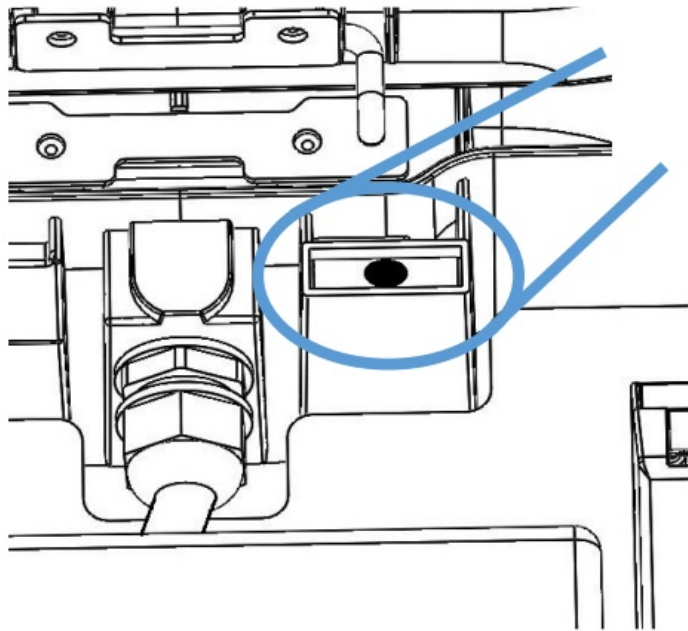
3. Using the 4mm Allen Key, tighten all the grub screws slightly so the fitting can still rotate.

4. Pr
ntern
Once
11Nr



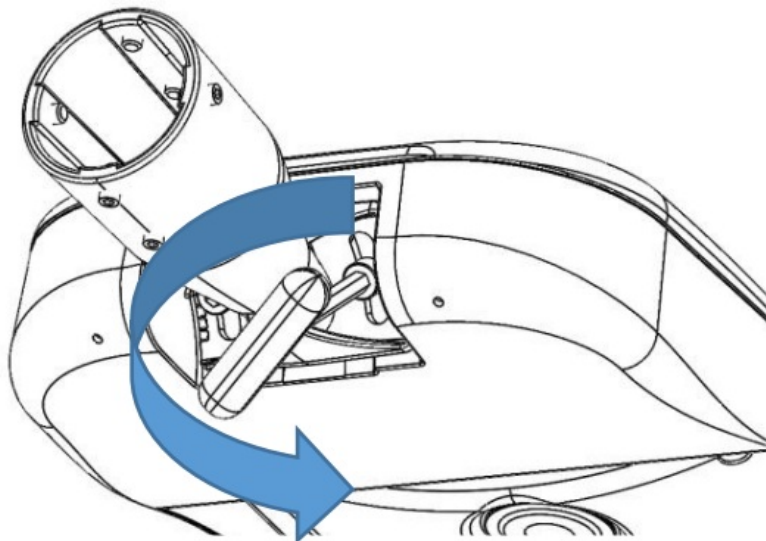
5. Spirit level to ensure the fitting is level

6. To
ck th
The
losec



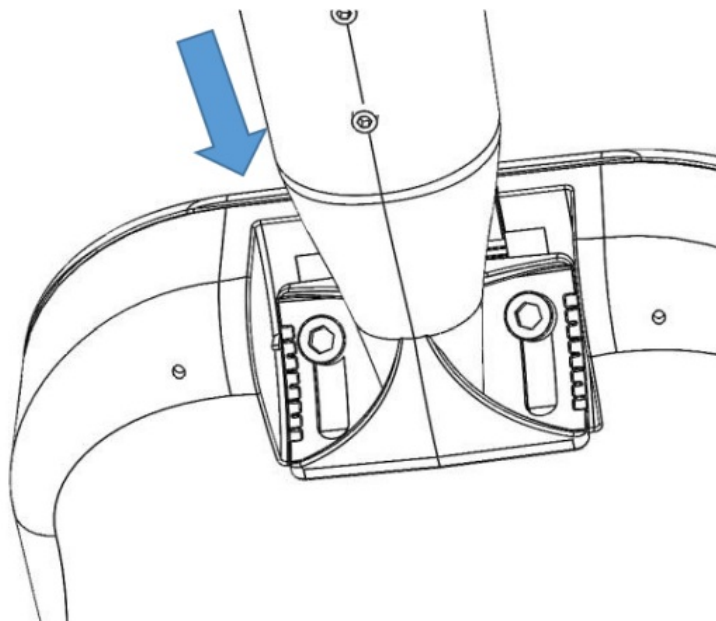
7. To adjust the vertical mounting angle, loosen the M10 bolts on the spigot using an 8mm hex key. DO NOT FULLY REMOVE.

8. R&



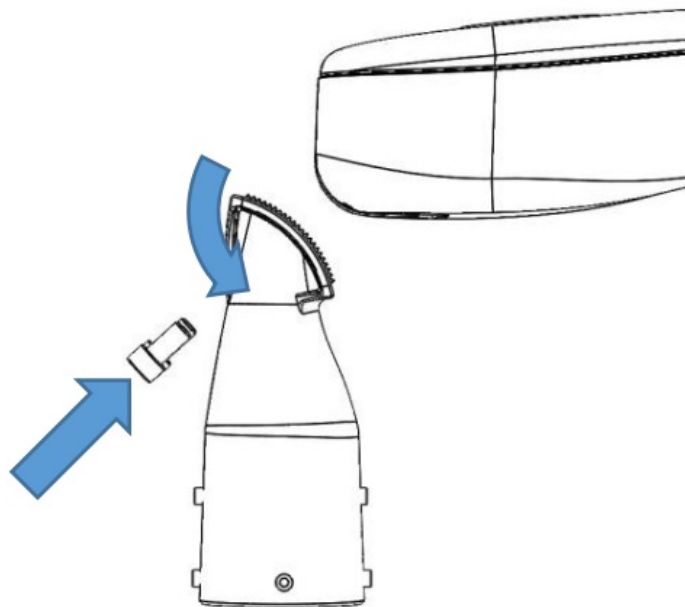
9. The spigot can be adjusted in 5° increments from -15° to +15°.

10. T
emov
°.



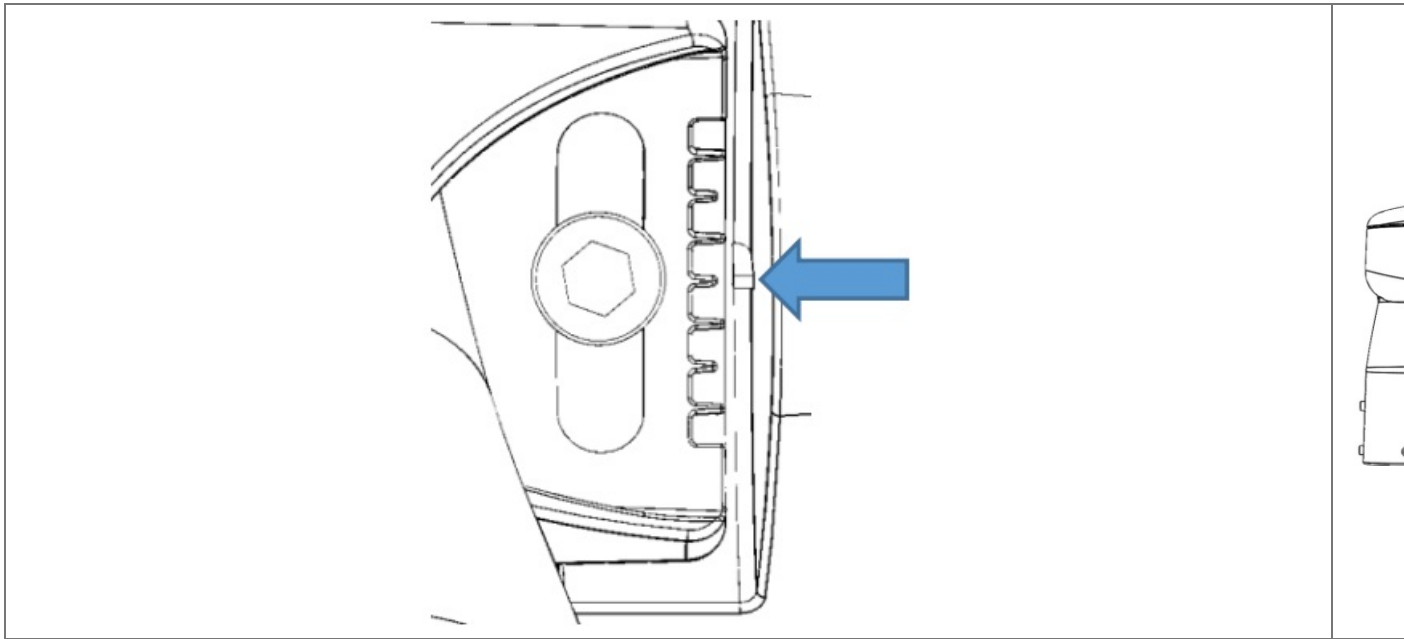
11. Re-attach the bolts, tightening to a torque of 11Nm.

12. E




13. When 0° or neutral orientation of the luminaire (with both vertical and horizontal spigot positioning) is required, the central mark on the spigot must align with the mark on the body. DO NOT use any part of the body to reference from.

14. F
Com
acco



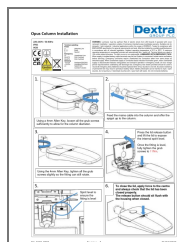
Terminal Labelling:

Power	
L1	Switched Live
E 	Earth
N	Neutral
Emergency	
L2	Unswitched Live
DA/AT3	DALI Autotest
DA/AT3	DALI Autotest
Dimming	
-/D1/DA	Analogue/DSI/DALI
+ /D2/DA	Analogue/DSI/DALI
L3	Switch Dim /Corridor Function

220-240V / 50-60Hz
IP65
IK09



Documents / Resources



[Dextra Opus Column Small Sensor](#) [pdf] Installation Guide
Opus Column Small Sensor, Opus Column, Small Sensor, Sensor

[Manuals+](#).