



## Dextra Comtec LED Surface Installation Guide

[Home](#) » [Dextra](#) » Dextra Comtec LED Surface Installation Guide 

### Contents

- [1 Dextra Comtec LED Surface](#)
- [2 Terminal Labelling](#)
- [3 LUMINAIRES WITH EMERGENCY PACK](#)
- [4 INSTALLATION INSTRUCTION](#)
- [5 Documents / Resources](#)
- [6 Related Posts](#)



### Dextra Comtec LED Surface



### Terminal Labelling

## **Power**

- L1 Switched Live
- E Earth
- N Neutral

## **Emergency**

- L2 Unswitched Live
- DA/AT3 DALI Autotest
- DA/AT3 DALI Autotest

## **Dimming**

- -/D1/DA Analogue/DSI/DALI
- +/D2/DA Analogue/DSI/DALI
- L3 Switch Dim / Corridor Function

## **WARNING**

Luminaire must be earthed. Risk of electric shock from LED boards if operated with the cover removed. Installation/operation outside of luminaires' intended scope invalidates the warranty. Suitable only for domestic/light industrial/industrial applications within the scope of EN55015. Tested to compliance with BSEN 60598: specification for general requirements and tests. Must be installed by a suitably qualified person in accordance with all relevant legislation. Ambient operating temperature of 0°C to 25°C. If the maximum operating temperature is exceeded luminaire will automatically dim/switch off. Terminal blocks are rated to 16A unless stated otherwise. The light source is nonreplaceable.

## **LUMINAIRES WITH EMERGENCY PACK**

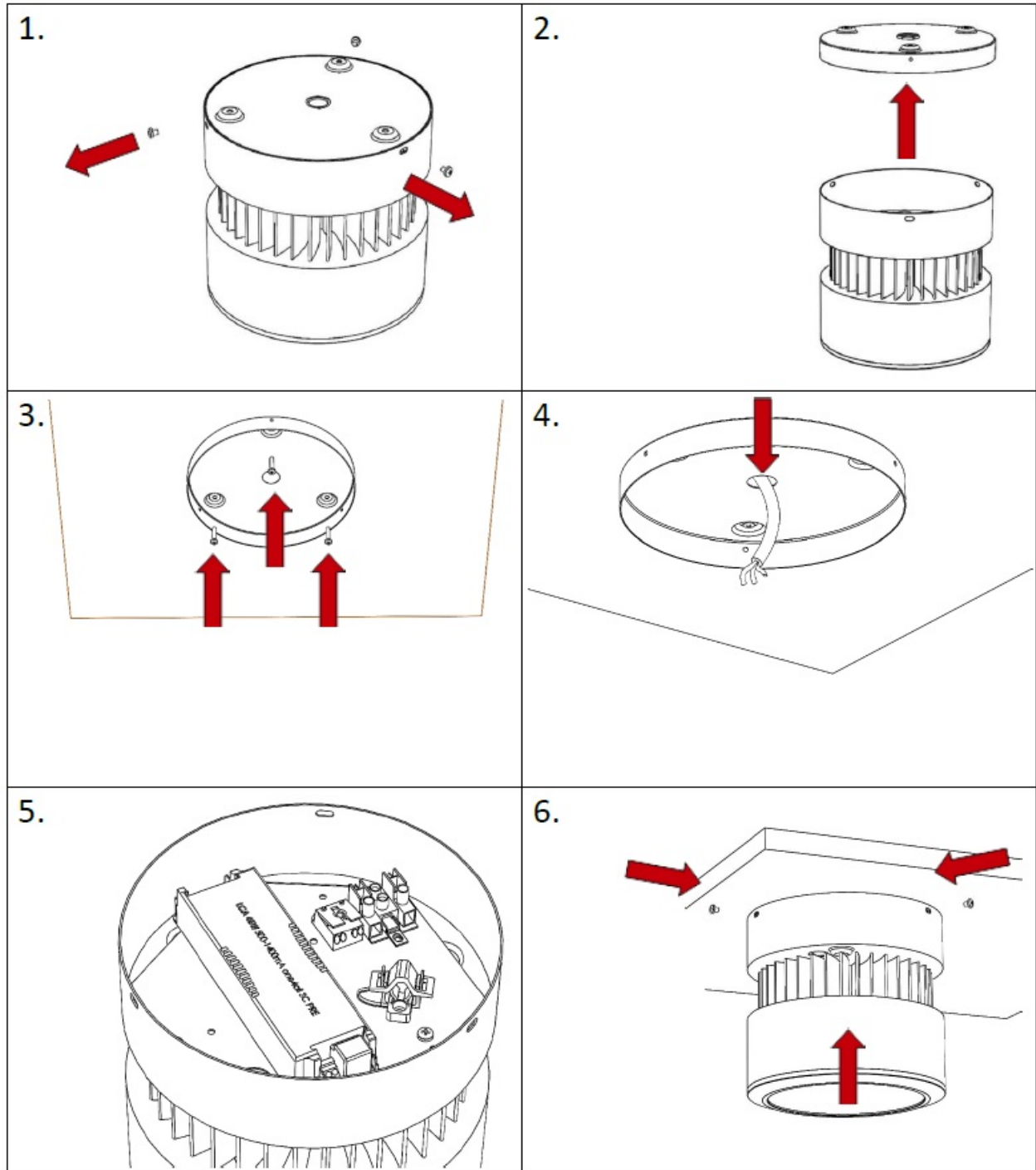
When the supply is isolated battery output terminals may be live if the battery is connected. Isolate mains and batteries before servicing. Emergency luminaires require an unswitched live connection taken from the same phase as switched supply. When an unswitched supply is connected status indicator illuminates green, when an unswitched supply is disconnected indicator extinguishes and the luminaire operates in emergency mode. 24-hour charge period is required before undertaking a full discharge test. Emergency test sheets provided should be used to record all emergency tests. Batteries should be replaced when the 3-hour duration is not met. Excessive switching of permanent life may result in premature battery failure. Battery electrolytes can be harmful to eyes / open wounds, do not puncture if electrolyte touches skin/eyes flush with water. Do not incinerate batteries.

## **INSTALLATION INSTRUCTION**

1. Unpack luminaire and remove the three screws as shown. This will release the body from the base
2. Remove the base from the main body.
3. Offer up the base up to the ceiling and drill a suitable cable entry hole in the centre behind the base. The hole should be approximately 20mm in diameter. Secure the base to the ceiling using three suitable screws (not supplied).
4. Feed the mains cable in through the drilled hole in the ceiling and through the base. Wire into the relevant terminals in the main housing and ensure the cable clamp is secured.

5. SEE THE PICTURE

6. Offer the main housing up to the base ensuring not to trap any loose cables. Replace the three screws removed in step 1



7. Remove three screws from the ceiling rose.

8. Fix mount plate to the ceiling and feed mains cable through pre-wired hole

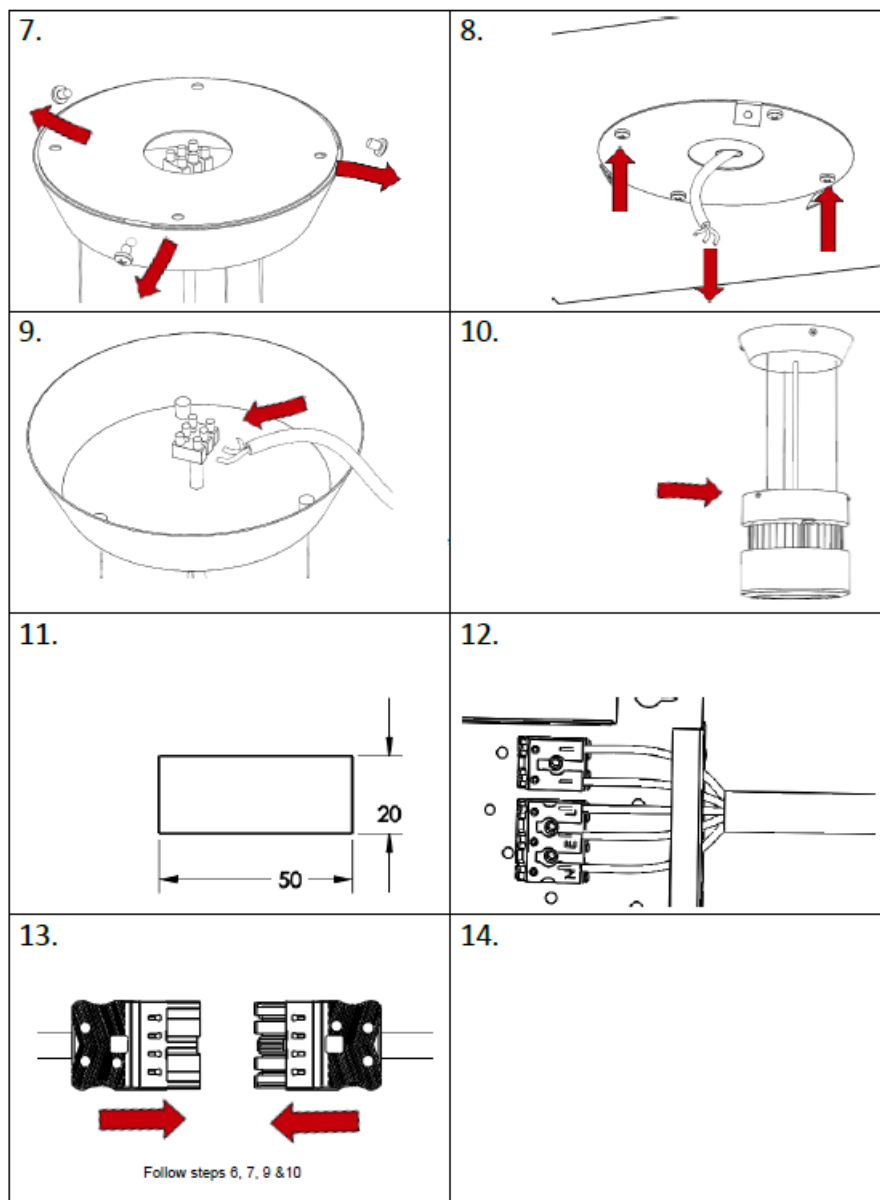
9. Wire mains cable into marked terminals as required.

10. Reverse Step 7 to refit the ceiling rose. To adjust suspended mounting height, open up gear tray in main body as per step 1.

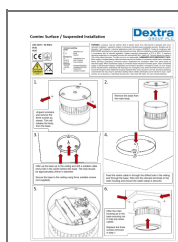
11. Cut a hole approximately 50mm by 20mm for the connector to pass through central to where you are intending to install the fitting

12. Lift tile adjacent to location of CTEC place the emergency box there and wire into the remote E3 Pack.

13. Connect the two 5 poles together and feed through the hole you have just cut.



## Documents / Resources



[Dextra Comtec LED Surface](#) [pdf] Installation Guide  
Comtec LED Surface, Comtec, LED Surface, Surface