



dewenwils HRLS13S Remote Control Light Socket Instruction Manual

[Home](#) » [dewenwils](#) » dewenwils HRLS13S Remote Control Light Socket Instruction Manual 

Contents

- [1 dewenwils HRLS13S Remote Control Light Socket](#)
- [2 Product Information](#)
- [3 Product Usage Instructions](#)
- [4 Product Layout](#)
- [5 Operating Instructions](#)
- [6 Canceling Programming](#)
- [7 Programming the Receiver](#)
- [8 Mounting the Wall Switch](#)
- [9 Battery Replacement](#)
- [10 Troubleshooting](#)
- [11 Specifications](#)
- [12 Safety Information](#)
 - [12.1 Federal Communications Commission Interference Statement](#)
- [13 One-Year Limited Warranty](#)
- [14 Documents / Resources](#)
- [15 Related Posts](#)



dewenwils HRLS13S Remote Control Light Socket



Product Information

The product is a lamp with a switch and a wall switch. It comes with a transmitter and operates on a CR2032 3V battery. The lamp head needs to be screwed onto the lamp holder. The switch has buttons to turn on/off the light socket. The wall switch consists of upper and lower shells that need to be separated and then attached together. It can be mounted on the wall using the provided mounting screws. The transmitter needs to be attached to the base of the wall switch.

Product Usage Instructions

1. Screw the lamp head to the lamp holder.
2. To turn on/off the light socket, press the left button of the switch to turn on and the right button to turn off.
3. To program the transmitter, release the program button and then press the ON button (1) on the transmitter.
After 1 second, press the OFF button (1).
4. **Mounting the Wall Switch:**
 1. Separate the upper and lower shells of the Wall Switch.
 2. **Install Wall Plate:**
 - **Way 1:** Secure the lower housing of the wall switch to the wall using the provided mounting screws.
 - **Way 2:** Secure the lower housing of the wall switch inside the wall box using the provided mounting screws.
 3. Attach the upper shell to the lower shell.
5. Attach the transmitter to the base of the wall switch.
6. To turn on/off the light socket using the wall switch, press the left button of the switch to turn on and the right button to turn off.

Note:

The product complies with the Innovation, Science, and Economic Development Canada license-exempt RSS standard(s). It has a one-year limited warranty for materials and workmanship from the purchase date. The warranty does not cover damage caused by personal misuse or improper installation. Please provide your Order

ID and Name for better assistance from our customer service team.

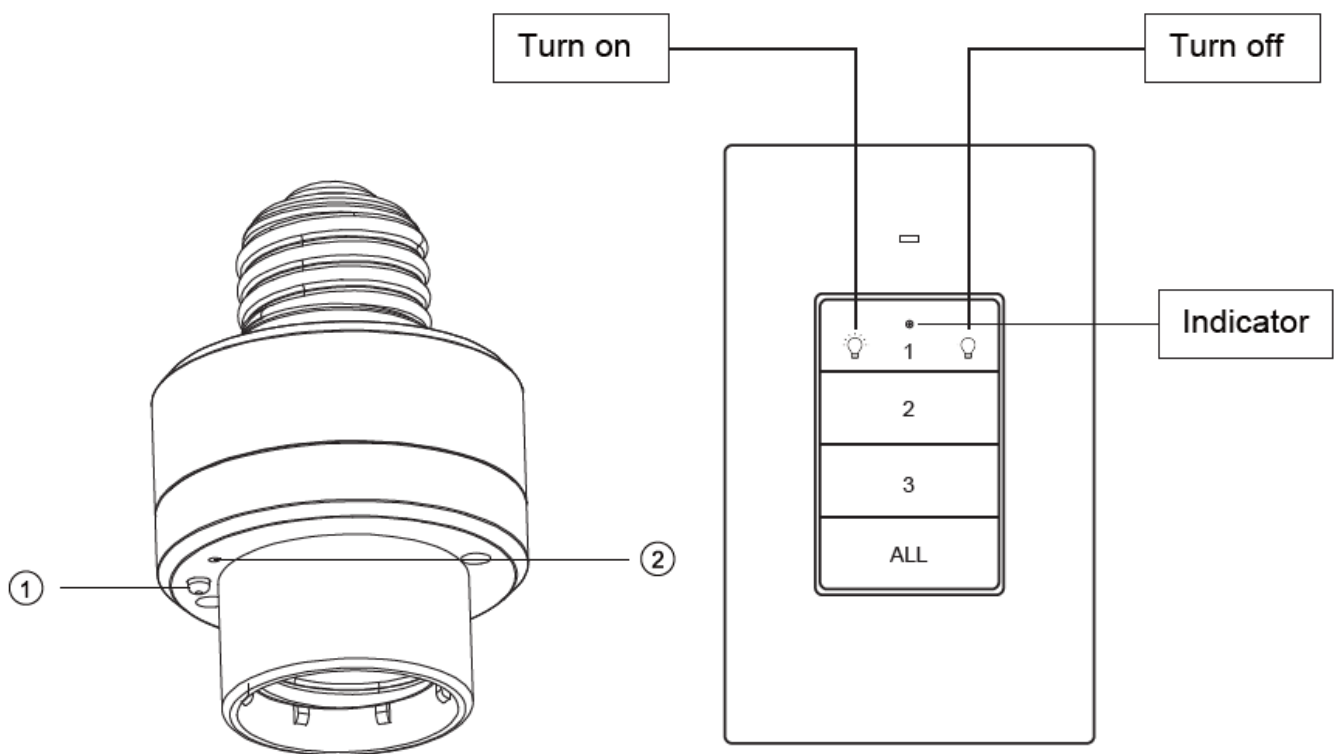
Please pay attention to the warning signs Read the instructions with caution before operating and keep it properly.

Warning:

To reduce the risk of fire, electric shock, or personal injury, please strictly follow the instructions.

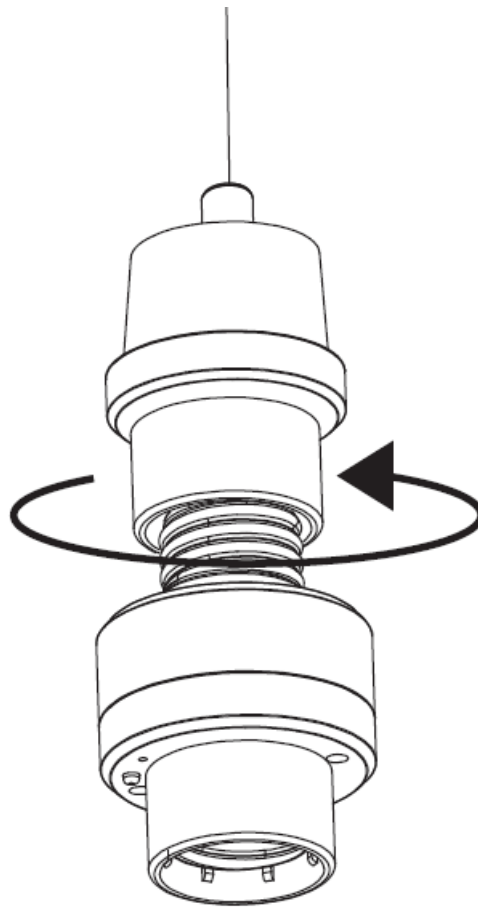
1. Indoor use only. Avoid high humidity, high temperature, and areas with a high magnetic field.
2. Always be sure to cut off the power before installing the receiver.
3. Don't connect any device that may exceed the performance limits of the receiver.
4. Don't install or repair the product Only authorized service personnel should undertake such installation and repairs.
5. If the remote is not in use for an extended period of time, remove the batteries.
6. Used batteries should be disposed of safely and properly.
7. To prevent a choking hazard, keep packing materials away from children.
8. Do not use the battery again if it is dropped or knocked out of shape.

Product Layout

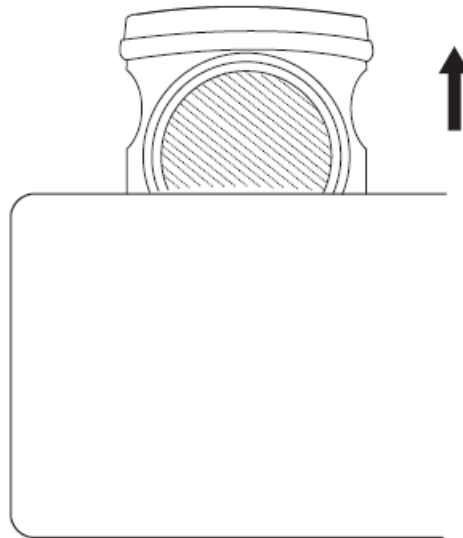


1. Program button (On/Off button)
2. Indicator

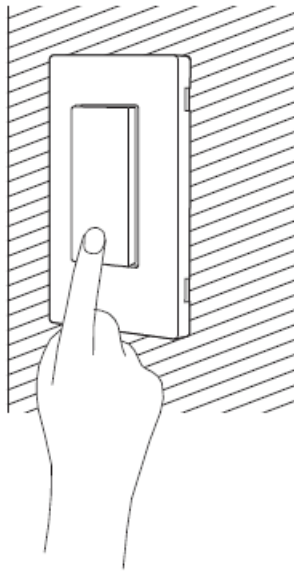
Operating Instructions



1. Please screw the lamp head to the lamp holder.



2. Remove the isolation tab in the battery compartment of the transmitter.



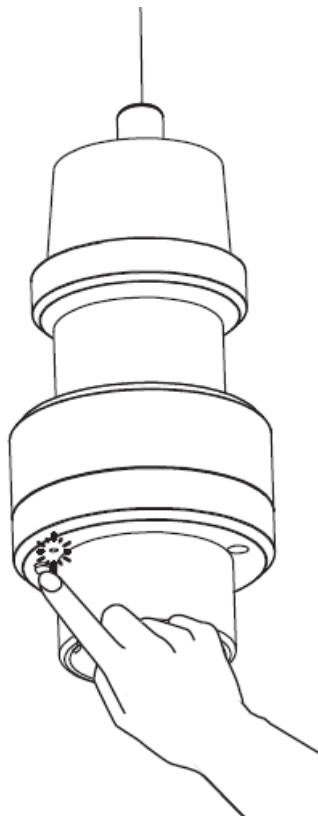
3. Press the buttons of the switch to turn on/off the light socket: left button to turn on, right button to turn off.

Note:

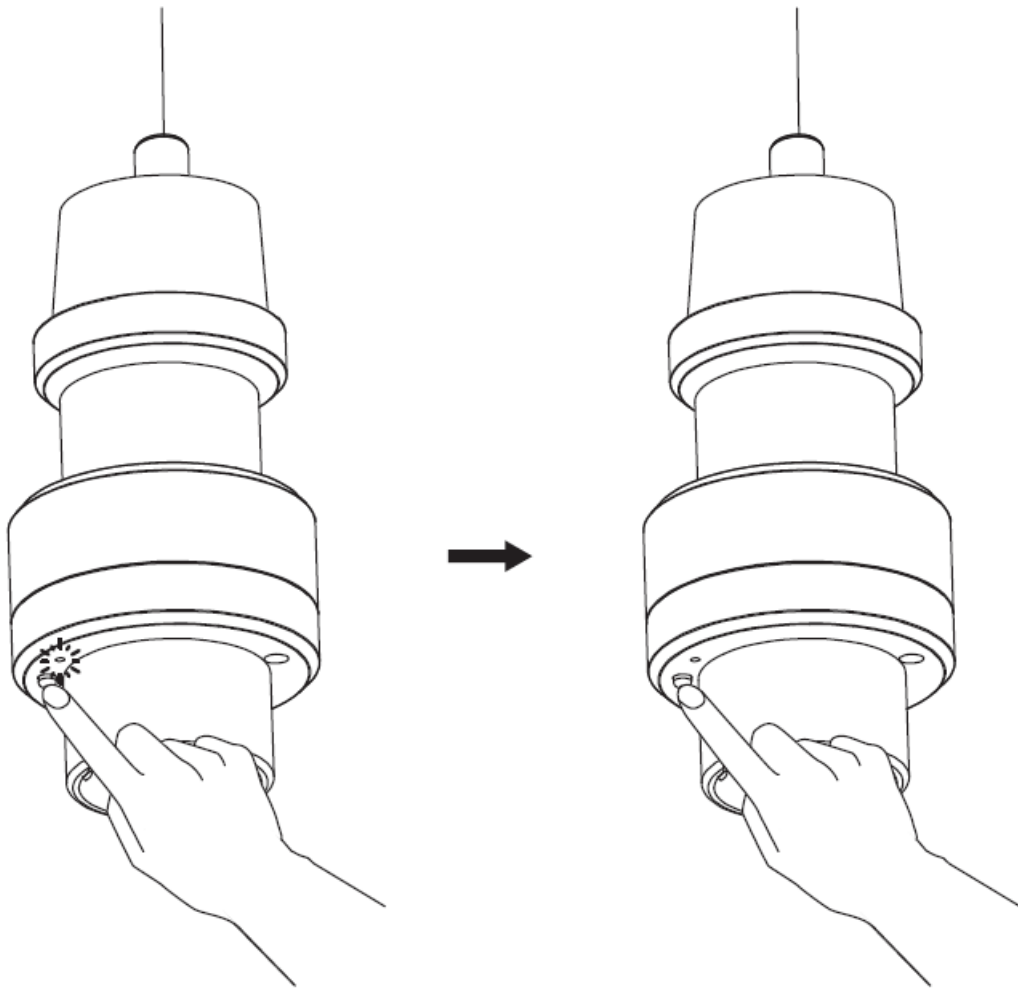
1. The program button of the receiver can also be used as a manual switch.
2. The receiver will remain "OFF" after a power cut to save energy.

Canceling Programming

To remove a receiver from all transmitter pairings (no remote transmitter can control it):



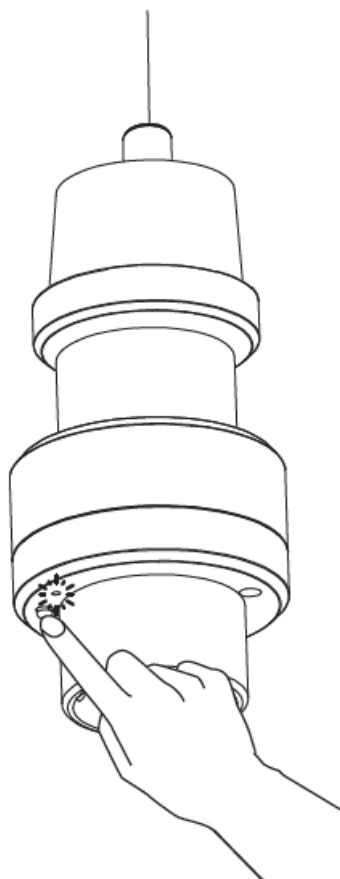
1. Press the program button on the receiver for 6 seconds until the indicator light starts to flash rapidly. (Note: The light flashes from slowly to rapidly.)



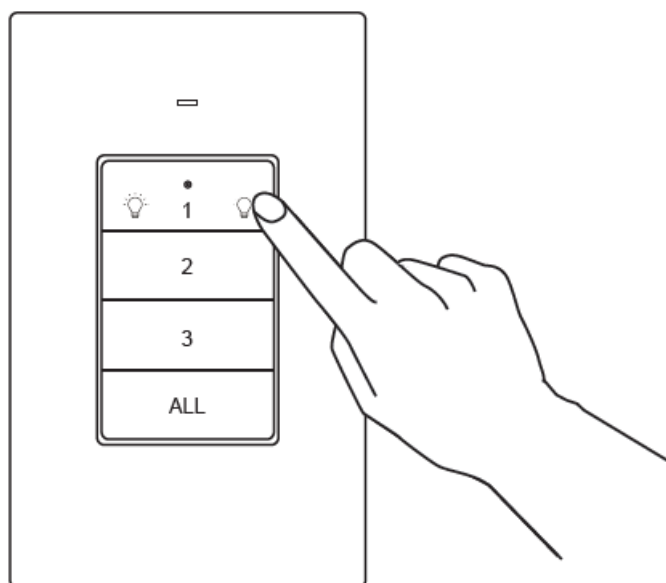
2. Release the program button and then press it again. The indicator light will be off. All the programming has been canceled.

Programming the Receiver

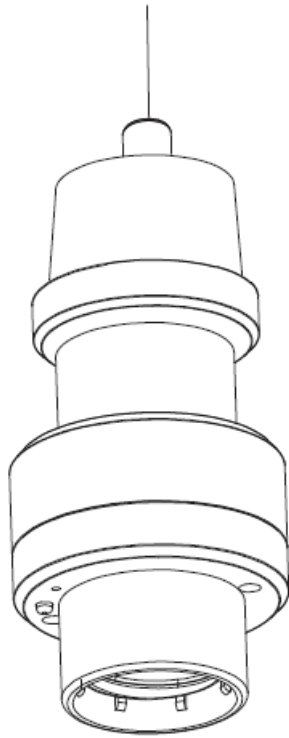
The receivers and transmitters have been pre-paired for immediate use, but there are a few units that may not be pre-programmed or programmed properly, and you can customize the configuration to meet your needs. To program a transmitter and receiver, please follow the steps below:



1. Press the program button on the receiver for 3 seconds until the indicator light starts to flash slowly.



2. Release the program button, then press the ON button (1) on the transmitter, and after 1 second, press the OFF button (1).

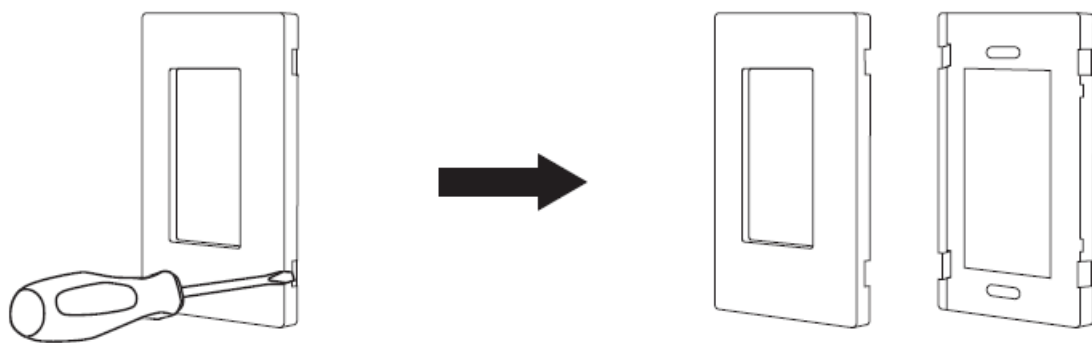


3. Programming/pairing is successful when the indicator light stops blinking.

Note:

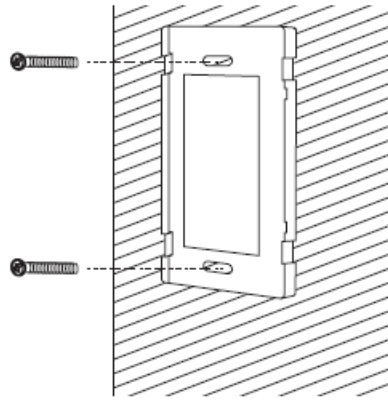
- Each set of ON or OFF buttons can be paired with and control several outlets;
- Each outlet can be paired and controlled by multiple transmitters.

Mounting the Wall Switch

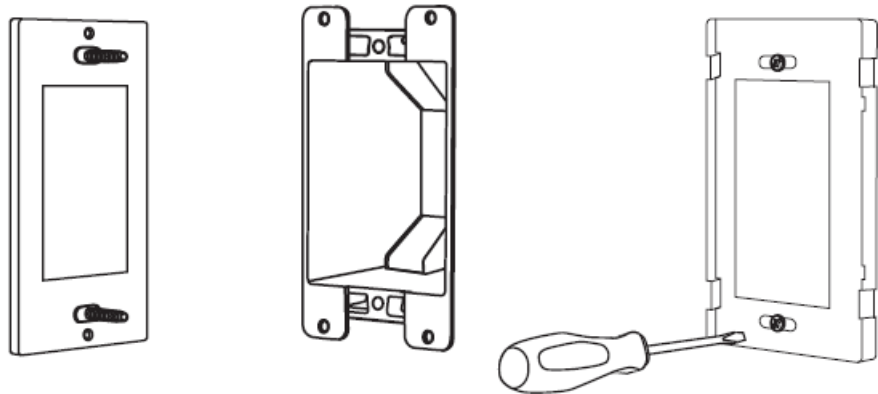


1. Separate the upper and lower shells of the Wall Switch.

Way1

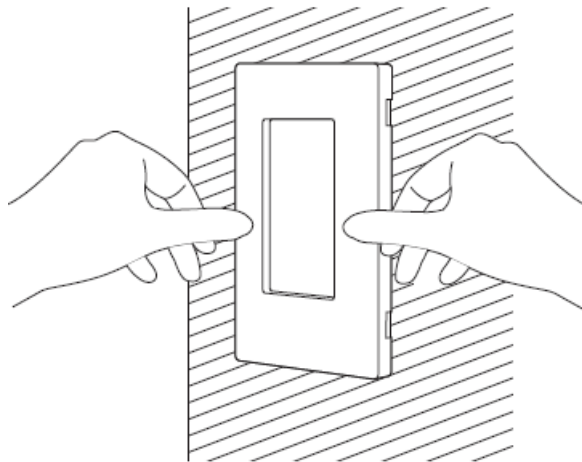


Way2

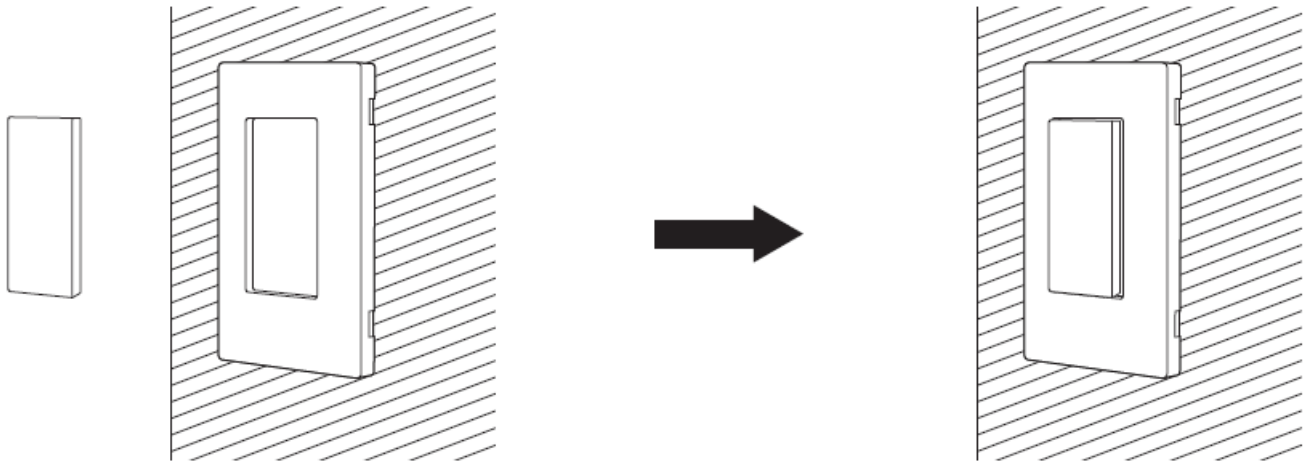


2. Install Wall Plate

- **Way 1:** Secure the lower housing of the wall switch to the wall using the provided mounting screws.
- **Way 2:** Secure the lower housing of the wall switch inside the wall box using the provided mounting screws.



3. Attach the upper shell to the lower shell.



4. Attach the transmitter to the base.
5. Press the buttons of the switch to turn on/off the light socket: the left button to turn on, the right button to turn off.

Battery Replacement

1. If you find the receiver is working abnormally or the indicator on the transmitter becomes dim, replace the remote battery with a new CR2032 3V battery, making sure the polarity+/- of the battery be correct.
2. Low battery power may decrease readable wireless remote range.
3. Remove batteries if the remote is not in use for an extended period of time.

Troubleshooting

In the case that one receiver is unresponsive to the remote control, please follow the steps below to resolve the issue:

1. If the wire switch receiver is unresponsive to the remote control, please refer to the “Canceling Programming” and “Programming the Receiver” sections in the manual to reprogram the receiver.
2. Make sure the receiver and appliance are properly connected and powered on.
3. Replace the remote battery with a new CR2032 3V battery.
4. The remote transmitter may be too far away to control the receiver.
5. Do not exceed the maximum load.
6. “Canceling Program” is always prior to “Programming the Receiver” when you would like to make changes.

Specifications

- **Input Voltage:** 120VAC, 60Hz
- **Max.Load Power:** Incandescent Bulb 100W; CFL/JLED 60W
- **Transmission Frequency:** 433.92MHz
- **Remote Control Distance:** 100 Feet (Free Area)
- **Remote Battery:** CR2032 3V
- **Socket Type:** Standard Medium E26 E27

Safety Information

Federal Communications Commission Interference Statement

This equipment has been tested and found to comply with the limits for Class B digital devices, pursuant to part 15 of the FCC Rules. These limits are designed to provide reasonable protection against harmful interference in a residential installation. This equipment generates, uses, and can radiate radio frequency energy and, if not installed and used in accordance with the instructions, may cause harmful interference to radio or television reception, which can be determined by turning the equipment off and on, the user is encouraged to try to correct the interference by one or more of the following measures:

- Redirect or relocate the receiving antenna.
- Increase the distance between the equipment and the receiver.
- Connect the equipment to an outlet on a circuit different from that to which the receiver is connected.
- Consult the dealer or an experienced radio/TV technician for help.

This device complies with Part 15 of the FCC Rules. Operation is subject to the following two conditions:

1. This device may not cause interference, and
2. This device must accept any interference, including interference that may cause undesired operation of the device.

FCC caution:

Any changes or modifications not expressly approved by the party responsible for compliance could void the user's authority to operate this equipment.

ISED/C Warning:

This device complies with Innovation, Science, and Economic Development Canada's license-exempt RSS standard(s). Operation is subject to the following two conditions:

1. This device may not cause interference, and
2. This device must accept any interference, including interference that may cause undesired operation of the device.


The device is compliant with RF exposure guidelines, users can obtain Canadian information on RF exposure and compliance.

One-Year Limited Warranty

Supported by our professional R&D team and QC team, we provide One Year Warranty for materials and workmanship from the purchase date. Please note that the warranty does not cover damage caused by personal misuse or improper installation. Please attach your Order ID and Name so that our dedicated customer service team can help you better.



Documents / Resources

<div data-bbox="181 107 233 123" data-label="Text"><p>dewenwils</p></div> <div data-bbox="150 134 264 156" data-label="Text"><p>Remote Control Light Socket (Instruction Manual)</p></div> <div data-bbox="177 165 237 255" data-label="Image">A technical line drawing of a remote control light socket. It features a standard E27 screw-in base with a wider, cylindrical remote control socket attached to the top.</div> <div data-bbox="153 282 248 302" data-label="Text"><p>Please read the instruction to ensure safety Read all the instructions with a caution before operating and using the product.</p></div> <div data-bbox="269 313 284 320" data-label="Text"><p>00000</p></div>	<div data-bbox="319 152 1468 255" data-label="Text"><p>dewenwils HRLS13S Remote Control Light Socket [pdf] Instruction Manual HRLS12J, HRLS13S, HRLS13S Remote Control Light Socket, Remote Control Light Socket, Light Socket, Socket</p></div>
--	--