



dewenwils E26 Remote Control Light Socket Instruction Manual

[Home](#) » [dewenwils](#) » dewenwils E26 Remote Control Light Socket Instruction Manual 

Contents

- 1 dewenwils E26 Remote Control Light Socket
- 2 Product Layout
- 3 Operating Instructions
- 4 Battery Replacement
- 5 Troubleshooting
- 6 Specifications
- 7 FCC STATEMENT
- 8 Limited Warranty
- 9 Documents / Resources

dewenwils

dewenwils E26 Remote Control Light Socket



Thank you for your purchase.

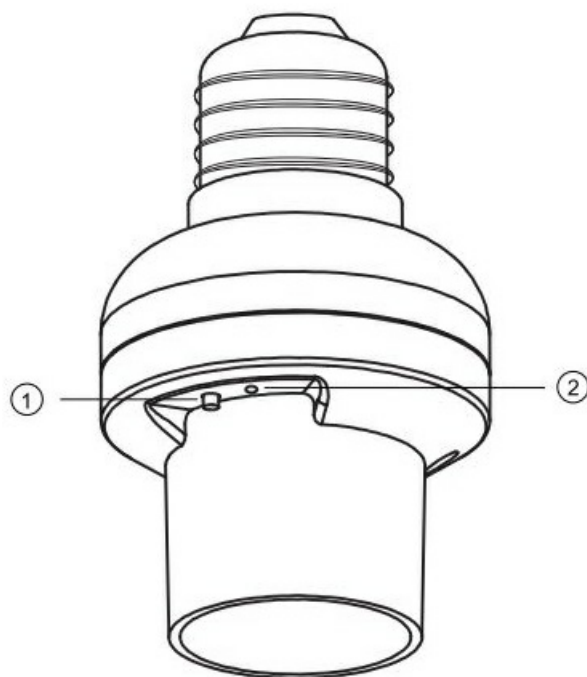
Please contact us if you have any questions. We will get back to you within 24 hours. Please attach your Order ID so that we can serve you better.

Warning

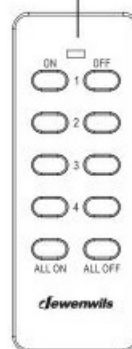
To reduce the risk of fire, electric shock, or personal injury, please strictly follow the instructions.

1. Indoor use only. Avoid high humidity, high temperature, and areas with a high magnetic field.
2. Always be sure to cut off the power before installing the receiver.
3. Don't connect any device that may exceed the performance limits of the receiver.
4. Don't install or repair the product Only authorized service personnel should undertake such installation and repairs.
5. If the remote is not in use for an extended period of time, remove the batteries.
6. Used batteries should be disposed of safely and properly.
7. To prevent a choking hazard, keep packing materials away from children.
8. Do not use the battery again if it is dropped or knocked out of shape.

Product Layout

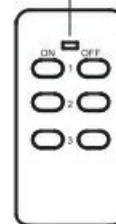


Indicator



Transmitter BH-V

Indicator



Transmitter BH-U

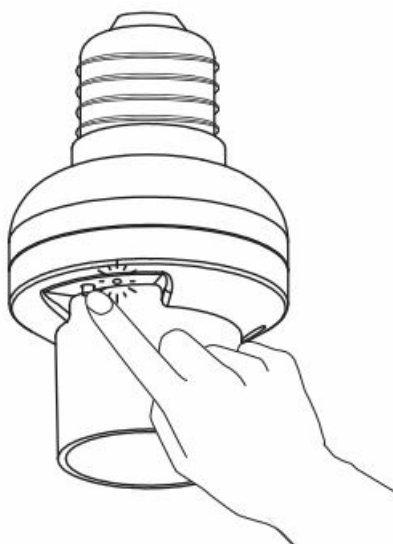
1. Program button (On/Off button)
2. Indicator

Operating Instructions

1. Remove the isolation tab in the battery compartment of the transmitter.
2. Press the ON/OFF button on the wall switch the remote control to turn the receiver on and off.

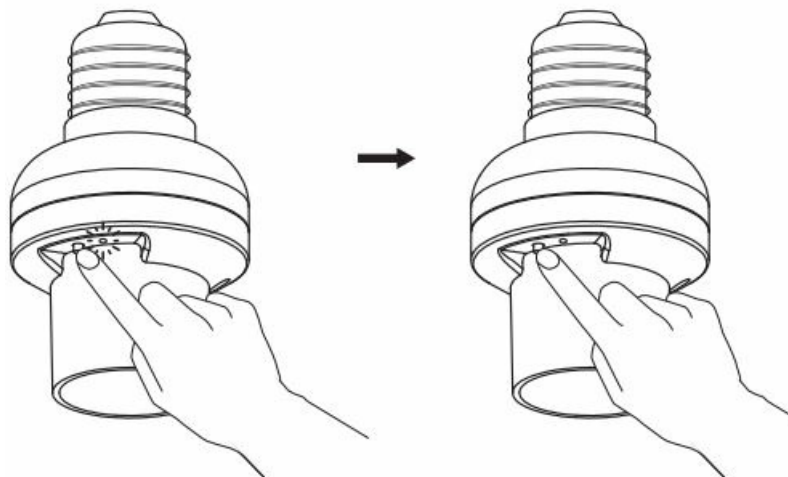
Canceling Programming

To remove a receiver from all transmitter pairings (no remote transmitter can control it):



1. Press the program button on the receiver for 6 seconds until the indicator light starts to flash rapidly. (Note: The

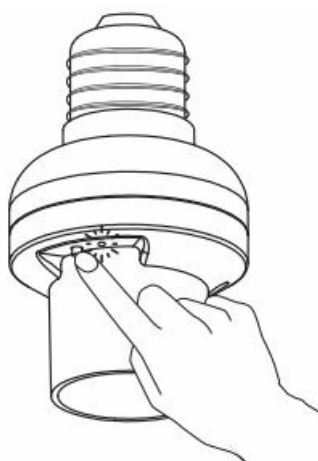
light flashes from slowly to rapidly.)



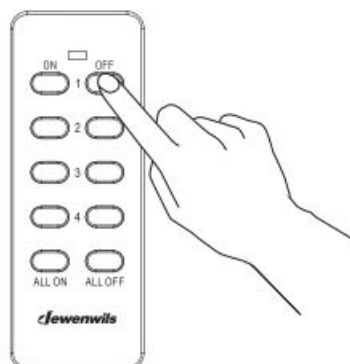
2. Release the program button and then press it again. The indicator light will be off. All the programming has been canceled.

Programming the Receiver

The receivers and transmitters have been pre-paired for immediate use, but there are few units may not be pre-programmed or programmed incorrectly, or you want to customize the configuration to meet your needs. To program a transmitter and receiver, please follow the steps below:



1. Press the program button on the receiver for 3 seconds until the indicator light starts to flash slowly.



2. Release the program button and then press the 'on' or 'off' button on the remote control.



3. Programming/paring is successful when the indicator light stops blinking.

Note

- Each set of ON or OFF buttons can be paired with and control several outlets;
- Each outlet can be paired and controlled by multiple transmitters.

Battery Replacement

1. If you find the receiver is working abnormally or the indicator on the transmitter becomes dim, replace the remote battery with a new DC 1 'N (type 23A) battery, making sure the polarity +/- of the battery is correct.
2. Low battery power may decrease readable wireless remote range.
3. Remove batteries if the remote is not in use for an extended period of time.

Troubleshooting

In the case that one receiver is unresponsive to the remote control, please follow the steps below to resolve the issue:

1. If the wire switch receiver is unresponsive to the remote control, please refer to the "Canceling Programming" and "Programming the Receiver" sections in the manual to reprogram the receiver.
2. Make sure the receiver and appliance are properly connected and powered on.
3. Replace the remote battery with a new 12V (23A) battery.
4. The remote transmitter may be too far away to control the receiver.
5. Make sure not to exceed the maximum load.
6. "Canceling Program" is always prior to "Programming the Receiver" when you would like to make changes.

Specifications

- **Input Voltage:** 120VAC, 60Hz
- **Max.load Power:** Incandescent Bulb SOW; CFL/LED 20W
- **Transmission Frequency:** 433.92MHz
- **Remote Control Distance:** 80 Feet (Free Area)
- **Remote Battery:** 12V (23A)
- **Socket Type:** Standard Medium E26

FCC STATEMENT

Federal Communications Commission Interference Statement. This equipment has been tested and found to comply with the limits for Class B digital device, pursuant to part 15 of the FCC Rules. These limits are designed to provide reasonable protection against hannful interference in a residential installation. This equipment generates, uses and can radiate radio frequency energy and, if not installed and used in accordance with the instructions, may cause hannful interference to radio or television reception, which can be determined by turning the equipment off and on, the user is encouraged to try to correct the interference by one or more of the following measures:

- Redirect or relocate the receiving antenna.
- Increase distance between the equipment and the receiver.
- Connect the equipment into an outlet on a circuit different from that to which the receiver is connected.
- Consult the dealer or an experienced radio/TV technician for help.

This device complies with Part 15 of the FCC Rules. Operation is subject to the following two conditions:

1. this device may not cause interference.
2. this device must accept any interference, including interference that may cause undesired operation of the device.

FCC caution: Any changes or modifications not expressly approved by the party responsible for compliance could void the usefs authority to operate this equipment.


Limited Warranty

One-Year Limited Warranty

- DEWENWILS warrants this product to be free from defects in material and workmanship for a period of one year from the date of purchase.
- Warranty is void if damage is caused by misuse or improper installation.
- Our dedicated customer service team will get back to you within 24 hours.



Documents / Resources

 The image shows the front cover of the instruction manual for the Dewenwils Remote Control Light Socket. It features the Dewenwils logo at the top, the product name 'Remote Control Light Socket' and '(Instruction Manual)' below it, and a line drawing of the light socket. At the bottom, there is a small disclaimer: 'Thank you for your purchase. Please contact us if you have any questions. We will provide you with the best service. Please email us at: info@dewenwils.com or call 1-800-888-8888.' The number '1112000' is printed at the very bottom.	<p>dewenwils E26 Remote Control Light Socket [pdf] Instruction Manual E26, Remote Control Light Socket</p>
---	--