



DEWALT DWD241 Dual Handle Paddle Mixer Instructions

[Home](#) » [Dewalt](#) » DEWALT DWD241 Dual Handle Paddle Mixer Instructions 

Contents

- 1 DEWALT DWD241 Dual Handle Paddle Mixer
- 2 Product Information
- 3 Product Usage Instructions
- 4 Technical Data
- 5 EC-Declaration of Conformity
- 6 Definitions: Safety Guidelines
- 7 GENERAL POWER TOOL SAFETY WARNINGS
- 8 Mixer Safety Instructions
- 9 Additional Safety Rules for Paddle Mixers
- 10 Residual Risks
- 11 Electrical Safety
- 12 Package Contents
- 13 Markings on Tool
- 14 Description (Fig. A)
- 15 ASSEMBLY AND ADJUSTMENTS WARNING
- 16 DeWALT ToolConnect Tag Ready (Fig. D)
- 17 OPERATION
- 18 MAINTENANCE
- 19 Protecting the Environment
- 20 CONTACT LIST
- 21 Documents / Resources
 - 21.1 References
- 22 Related Posts



DEWALT DWD241 Dual Handle Paddle Mixer



Product Information

The DWD241 is a Dual Handle Paddle Mixer manufactured by DEWALT. The mixer is designed to be used for mixing various materials such as paint, mortar, and concrete. The mixer comes with a 1800W motor and can operate at a voltage of 230V. The mixer has a final page size of A5 (148mm x 210mm). The mixer weighs 6.3 kg and has a maximum sound pressure level of 85 dB(A) and a sound power level of 96 dB(A). The mixer has a vibration level of less than 2.5 m/s² and an uncertainty value of 1.5 m/s².

Product Usage Instructions

1. Before using the mixer, read the user manual carefully and ensure that you have understood all the safety instructions and guidelines.
2. Ensure that the mixer is connected to a power source of 230V.
3. Place the mixer in a stable position on a flat surface.
4. Attach the appropriate mixing paddle to the mixer shaft.
5. Fill the mixing bucket with the material that needs to be mixed.
6. Adjust the speed control switch to the desired speed.
7. Hold the mixer by both handles and start mixing in a circular motion.
8. Continue mixing until the material is well mixed and has the desired consistency.
9. After use, switch off the mixer and unplug it from the power source.
10. Clean the mixer and all accessories thoroughly after use.

Congratulations!

You have chosen a DEWALT tool. Years of experience, thorough product development and innovation make DEWALT one of the most reliable partners for professional power tool users.

Technical Data

Voltage	VAC	230	115
UK & Ireland	VAC	230	115
Type		1	1
Power input	W	1800	1600
Speed 1	/min	225–400	225–400
Speed 2	/min	225–550	225–550
Speed 3	/min	225–725	225–725
Max. paddle diameter	mm	160	160
Spindle thread size		M14	M14
Weight	kg	6.3	6.55

Noise values and/or vibration values (triax vector sum) according to EN62841-2-10:

LPA (emission sound pressure level) dB(A)	85	85
LWA (sound power level) dB(A)	96	96
K (uncertainty for the given sound dB(A) level)	3	3
Vibration with simulated mixer m/s ²	< 2.5	< 2.5
basket a _h =		
Uncertainty K = m/s ²	1.5	1.5

The vibration and/or noise emission level given in this information sheet has been measured in accordance with a standardised test given in EN62841 and may be used to compare one tool with another. It may be used for a preliminary assessment of exposure.

WARNING:

- The declared vibration and/or noise emission level represents the main applications of the tool. However if the tool is used for different applications, with different accessories or poorly maintained, the vibration and/or noise emission may differ. This may significantly increase the exposure level over the total working period.
- An estimation of the level of exposure to vibration and/or noise should also take into account the times when the tool is switched off or when it is running but not actually doing the job. This may significantly reduce the exposure level over the total working period.
- Identify additional safety measures to protect the operator from the effects of vibration and/or noise such as: maintain the tool and the accessories, keep the hands warm (relevant for vibration), organisation of work patterns.

EC-Declaration of Conformity

Machinery Directive

Dual Handle Paddle Mixer

DWD241

- DEWALT declares that these products described under Technical Data are in compliance with:
2006/42/EC, EN62841-1:2015, EN62841-2-10:2017.
- These products also comply with Directive 2014/30/EU and 2011/65/EU. For more information, please contact DEWALT at the following address or refer to the back of the manual.
- The undersigned is responsible for compilation of the technical file and makes this declaration on behalf of DEWALT.



- Markus Rompel
- Vice-President Engineering, PTE-Europe
- DEWALT, Richard-Klinger-Straße 11,
- D-65510, Idstein, Germany
- 02.08.2019

Definitions: Safety Guidelines

The definitions below describe the level of severity for each signal word. Please read the manual and pay attention to these symbols.

- **DANGER:** Indicates an imminently hazardous situation which, if not avoided, will result in death or serious injury.
- **WARNING:** Indicates a potentially hazardous situation which, if not avoided, could result in death or serious injury.
- **CAUTION:** Indicates a potentially hazardous situation which, if not avoided, may result in minor or moderate injury.
- **NOTICE:** Indicates a practice not related to personal injury which, if not avoided, may result in property damage.
- Denotes risk of electric shock.
- Denotes risk of fire.

GENERAL POWER TOOL SAFETY WARNINGS

WARNING: Read all safety warnings, instructions, illustrations and specifications provided with this power tool. Failure to follow all instructions listed below may result in electric shock, fire and/or serious injury. SAVE ALL WARNINGS AND INSTRUCTIONS FOR FUTURE REFERENCE.

The term “power tool” in the warnings refers to your mains-operated (corded) power tool or battery-operated (cordless) power tool.

1. Work Area Safety

- Keep work area clean and well lit. Cluttered or dark areas invite accidents.
- Do not operate power tools in explosive atmospheres, such as in the presence of flammable liquids, gases or dust. Power tools create sparks which may ignite the dust or fumes.
- Keep children and bystanders away while operating a power tool. Distractions can cause you to lose control.

2. Electrical Safety

- Power tool plugs must match the outlet. Never modify the plug in any way. Do not use any adapter plugs with earthed (grounded) power tools. Unmodified plugs and matching outlets will reduce risk of electric shock.
- Avoid body contact with earthed or grounded surfaces, such as pipes, radiators, ranges and refrigerators. There is an increased risk of electric shock if your body is earthed or grounded.
- Do not expose power tools to rain or wet conditions. Water entering a power tool will increase the risk of electric shock.
- Do not abuse the cord. Never use the cord for carrying, pulling or unplugging the power tool. Keep cord away from heat, oil, sharp edges or moving parts. Damaged or entangled cords increase the risk of electric shock.
- When operating a power tool outdoors, use an extension cord suitable for outdoor use. Use of a cord suitable for outdoor use reduces the risk of electric shock.
- If operating a power tool in a damp location is unavoidable, use a residual current device (RCD) protected supply. Use of an RCD reduces the risk of electric shock.

3. Personal Safety

- Stay alert, watch what you are doing and use common sense when operating a power tool. Do not use a power tool while you are tired or under the influence of drugs, alcohol or medication. A moment of inattention while operating power tools may result in serious personal injury.
- Use personal protective equipment. Always wear eye protection. Protective equipment such as a dust mask, non-skid safety shoes, hard hat or hearing protection used for appropriate conditions will reduce personal injuries.
- Prevent unintentional starting. Ensure the switch is in the off-position before connecting to power source and/or battery pack, picking up or carrying the tool. Carrying power tools with your finger on the switch or energising power tools that have the switch on invites accidents.
- Remove any adjusting key or wrench before turning the power tool on. A wrench or a key left attached to a rotating part of the power tool may result in personal injury.
- Do not overreach. Keep proper footing and balance at all times. This enables better control of the power tool in unexpected situations.
- Dress properly. Do not wear loose clothing or jewellery. Keep your hair and clothing away from moving parts. Loose clothes, jewellery or long hair can be caught in moving parts.
- If devices are provided for the connection of dust extraction and collection facilities, ensure these are connected and properly used. Use of dust collection can reduce dust-related hazards.
- Do not let familiarity gained from frequent use of tools allow you to become complacent and ignore tool safety principles. A careless action can cause severe injury within a fraction of a second.

4. Power Tool Use and Care

- Do not force the power tool. Use the correct power tool for your application. The correct power tool will do the job better and safer at the rate for which it was designed.
- Do not use the power tool if the switch does not turn it on and off. Any power tool that cannot be

controlled with the switch is dangerous and must be repaired.

- Disconnect the plug from the power source and/ or remove the battery pack, if detachable, from the power tool before making any adjustments, changing accessories, or storing power tools. Such preventive safety measures reduce the risk of starting the power tool accidentally.
- Store idle power tools out of the reach of children and do not allow persons unfamiliar with the power tool or these instructions to operate the power tool. Power tools are dangerous in the hands of untrained users.
- Maintain power tools and accessories. Check for misalignment or binding of moving parts, breakage of parts and any other condition that may affect the power tool's operation. If damaged, have the power tool repaired before use. Many accidents are caused by poorly maintained power tools.
- Keep cutting tools sharp and clean. Properly maintained cutting tools with sharp cutting edges are less likely to bind and are easier to control.
- Use the power tool, accessories and tool bits etc. in accordance with these instructions, taking into account the working conditions and the work to be performed. Use of the power tool for operations different from those intended could result in a hazardous situation.
- Keep handles and grasping surfaces dry, clean and free from oil and grease. Slippery handles and grasping surfaces do not allow for safe handling and control of the tool in unexpected situations.

5. Service

Have your power tool serviced by a qualified repair person using only identical replacement parts. This will ensure that the safety of the power tool is maintained.

Mixer Safety Instructions

- Hold the tool with both hands at the intended handles. Loss of control can cause personal injury.
- Ensure sufficient ventilation when mixing flammable materials to avoid a hazardous atmosphere. Developing vapour may be inhaled or be ignited by the sparks the power tool produces.
- Do not mix food. Power tools and their accessories are not designed for processing food.
- Keep the cord away from the working area. The cord may be entangled by the mixer basket.
- Ensure the mixing container is placed in a firm and secure position. A container that is not properly secured may move unexpectedly.
- Ensure that no liquid splashes against the housing of the power tool. Liquid that has penetrated the power tool can cause damage and lead to electric shock.
- Follow the instructions and warnings for the material to be mixed. Material to be mixed may be harmful.
- If the power tool falls into the material to be mixed, unplug the tool immediately and have the power tool checked by a qualified repair person. Reaching into the bucket with the tool still plugged in can lead to electric shock.
- Do not reach into the mixing container with your hands or insert any other objects into it while mixing. Contact with the mixer basket may lead to serious personal injury.
- Start up and run down the tool in the mixing container only. The mixer basket may bend or spin in an uncontrolled manner.

Additional Safety Rules for Paddle Mixers

- Take into account that there will be a reactionary torsional momentum.
- Load the machine in such a way that the speed does not decrease too much or the machine is forced to stop.
- When working with dust, you must wear respiratory protection. Inhaling the dust may damage the respiratory tract.

WARNING: We recommend the use of a residual current device with a residual current rating of 30mA or less.

Residual Risks

In spite of the application of the relevant safety regulations and the implementation of safety devices, certain residual risks cannot be avoided. These are:

- Impairment of hearing.
- Risk of personal injury due to flying particles.
- Risk of burns due to accessories becoming hot during operation.
- Risk of personal injury due to prolonged use.
- A concentration of dust which is harmful to health when working in an area that is not sufficiently ventilated.

SAVE THESE INSTRUCTIONS

Electrical Safety

- The electric motor has been designed for one voltage only.
- Always check that the power supply corresponds to the voltage on the rating plate.
- Your DeWALT tool is double insulated in accordance with EN62841; therefore no earth wire is required.
- If the supply cord is damaged, it must be replaced only by DeWALT or an authorised service organisation.

Mains Plug Replacement

(U.K. & Ireland Only)

If a new mains plug needs to be fitted:

- Safely dispose of the old plug.
- Connect the brown lead to the live terminal in the plug.
- Connect the blue lead to the neutral terminal.

WARNING: No connection is to be made to the earth terminal.

Follow the fitting instructions supplied with good quality plugs. Recommended fuse: 13 A.

Using an Extension Cable

- If an extension cable is required, use an approved 3-core extension cable suitable for the power input of this tool (see
- Technical Data). The minimum conductor size is 1.5 mm²; the maximum length is 30 m.
- When using a cable reel, always unwind the cable completely.

Package Contents

The package contains:

- 1 Dual handle paddle mixer
- 2 Wrenches
- 1 160 mm paddle
- 2 Screws
- 1 Instruction manual
 - Check for damage to the tool, parts or accessories which may have occurred during transport.
 - Take the time to thoroughly read and understand this manual prior to operation.

Markings on Tool

The following pictograms are shown on the tool:



Read instruction manual before use.



Wear ear protection.



Wear eye protection.

Date Code Position (Fig. A)

The date code 6 , which also includes the year of manufacture, is printed into the housing.

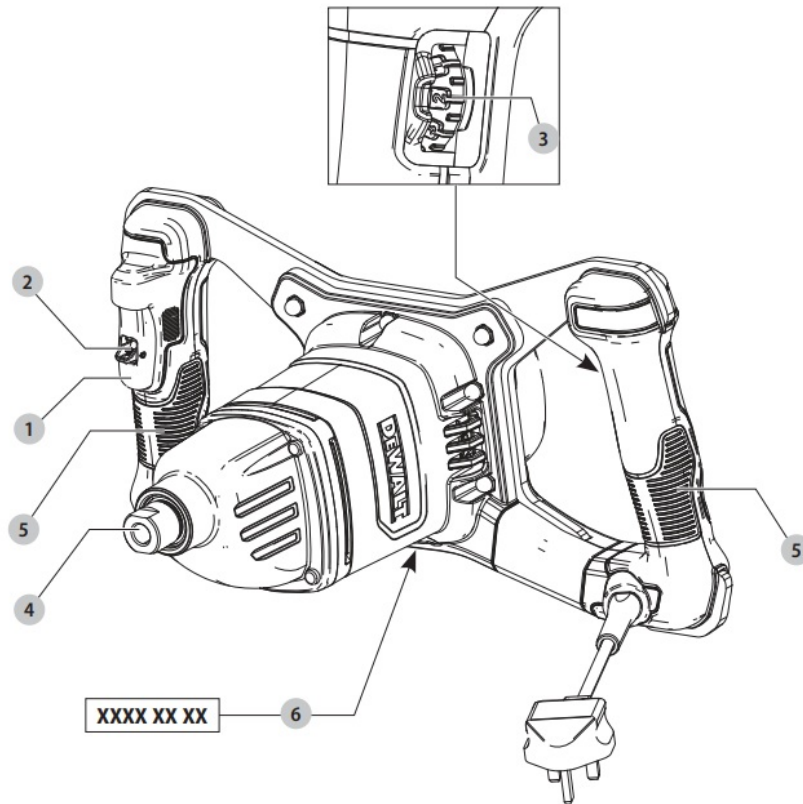
Example:

2019 XX XX

Year of Manufacture

Description (Fig. A)

Fig. A



WARNING: Never modify the power tool or any part of it. Damage or personal injury could result.

1. Variable speed trigger switch
2. Lock off lever
3. Variable speed dial
4. Paddle holder
5. Dual handle

Intended Use

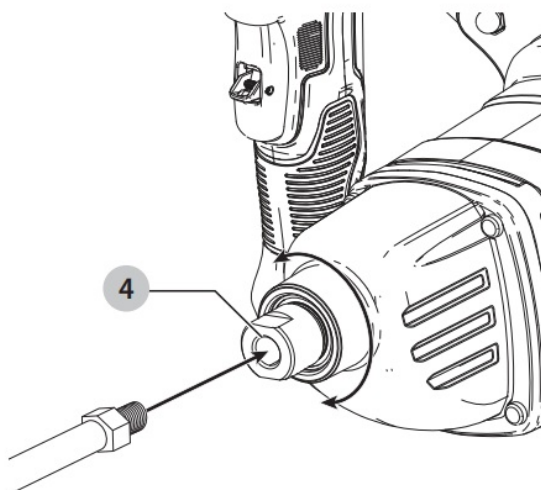
- Your dual handle paddle mixer is designed for professional mixing applications.
- DO NOT use under wet conditions or in the presence of flammable liquids or gases.
- Your dual handle paddle mixer is a professional power tool.
- DO NOT let children come into contact with the tool. Supervision is required when inexperienced operators use this tool.
 - Young children and the infirm. This appliance is not intended for use by young children or infirm persons without supervision.
 - This product is not intended for use by persons (including children) suffering from diminished physical, sensory or mental abilities; lack of experience, knowledge or skills unless they are supervised by a person responsible for their safety. Children should never be left alone with this product.

ASSEMBLY AND ADJUSTMENTS WARNING

To reduce the risk of serious personal injury, turn tool off and disconnect tool from power source before making any adjustments or removing/ installing attachments or accessories. An accidental start-up can cause injury.

Inserting and Removing a Paddle (Fig. B)

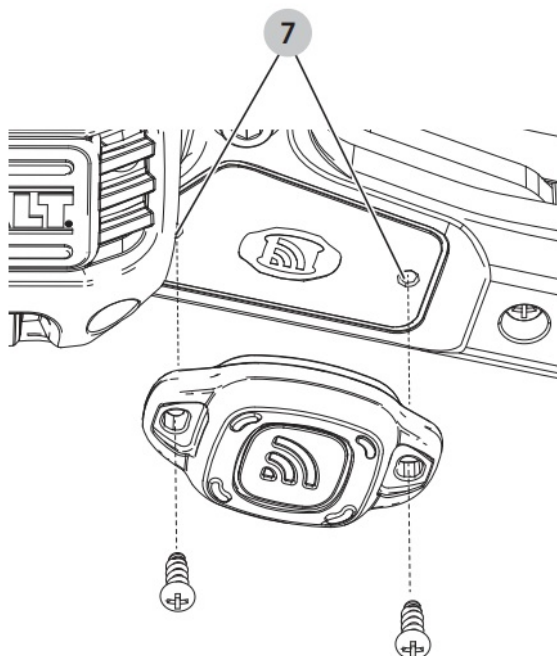
Fig. B



1. Insert the paddle thread into paddle holder 4 by turning it clockwise.
2. Tighten the paddle with the 2 included wrenches.
3. To remove the paddle, proceed in reverse order.

DeWALT ToolConnect Tag Ready (Fig. D)

Fig. D



Optional Accessory

Your mixer comes with mounting holes 7 and screws for installing a DeWALT Tool Connect Tag. You will need a cross bit tip to install the tag with the provided screws. The DeWALT Tool Connect Tag is designed for tracking and locating professional power tools, equipment, and machines using the DeWALT Tool Connect app. For proper installation of the DeWALT Tool Connect Tag refer to the DeWALT Tool Connect manual.

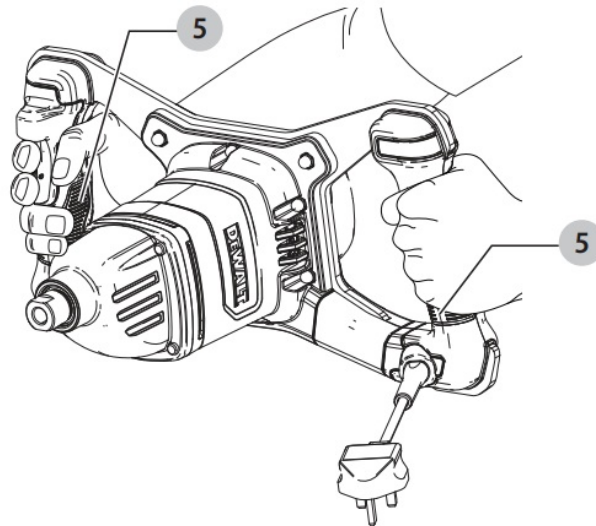
OPERATION

Instructions for Use

WARNING: Always observe the safety instructions and applicable regulations. **WARNING:** To reduce the risk of serious personal injury, turn tool off and disconnect tool from power source before making any adjustments or removing/ installing attachments or accessories. An accidental start-up can cause injury.

Proper Hand Position (Fig. C)

Fig. C



- **WARNING:** To reduce the risk of serious personal injury,
- **ALWAYS** use proper hand position as shown.
- **WARNING:** To reduce the risk of serious personal injury, **ALWAYS** hold securely in anticipation of a sudden reaction.

Proper hand position requires one hand on each dual handle 5 .

Running the Mixer (Fig. A)

WARNING:

- Do not use this tool to mix or pump easily combustible or explosive fluids (benzine, alcohol, etc.).
- Do not mix or stir inflammable liquids labelled accordingly.
- Always check the flammability warnings on any product before attempting to mix.
 1. Hold the mixer with both hands.
 2. To start the unit, press the lock off lever 2 and then the trigger 1 can be pulled in, turning on the unit.
 3. To stop the tool, release the trigger. During the mixing process you should guide the mixer around the container to ensure a more consistent mix. Continue until all of the material is completely mixed.
- **NOTE:** Please follow the processing instructions of the manufacturer of the material.
- Always be aware that the greater the viscosity of the material, the greater the impact of the torque forces on the mixer.
- **CAUTION:** If the mixer comes into contact with the surface of the mixing container while running, it may kickback.

Variable Speed Dial (Fig. A)

WARNING: Always switch off the tool when work is finished and disconnect the tool from the power source.

- The variable speed dial 3 offers added control and enables the mixer to be used at optimum conditions to suit the material.
- Turn the dial to the desired level. The higher the speed setting, the faster the rotation.

CAUTION: ALWAYS reduce the speed when submerging the mixer in the material or lifting it out. Once the mixer is fully submerged, increase the speed again to ensure that the motor is adequately cooled.

MAINTENANCE

Your power tool has been designed to operate over a long period of time with a minimum of maintenance. Continuous satisfactory operation depends upon proper tool care and regular cleaning.

WARNING: To reduce the risk of serious personal injury, turn tool off and disconnect tool from power source before making any adjustments or removing/ installing attachments or accessories. An accidental start-up can cause injury.

Lubrication

Your power tool requires no additional lubrication.

Cleaning

- **WARNING:** Blow dirt and dust out of the main housing with dry air as often as dirt is seen collecting in and around the air vents. Wear approved eye protection and approved dust mask when performing this procedure.
- **WARNING:** Never use solvents or other harsh chemicals for cleaning the non-metallic parts of the tool. These chemicals may weaken the materials used in these parts. Use a cloth dampened only with water and mild soap. Never let any liquid get inside the tool; never immerse any part of the tool into a liquid.

Optional Accessories

WARNING: Since accessories, other than those offered by DeWALT, have not been tested with this product, use of such accessories with this tool could be hazardous.

To reduce the risk of injury, only DeWALT recommended accessories should be used with this product. Consult your dealer for further information on the appropriate accessories.

Protecting the Environment

- Separate collection. Products marked with this symbol must not be disposed of with normal household waste.
- Products contain materials that can be recovered or recycled reducing the demand for raw materials.
- Please recycle electrical products according to local provisions. Further information is available at www.2helpU.com.

CONTACT LIST

- **Belgique et**
 - Luxembourg België en Luxemburg DeWALT – Belgium BVBA Egide Walschaertsstraat 16
 - 2800 Mechelen
 - **Tel:** NL 32 15 47 37 63
 - **Tel:** FR 32 15 47 37 64
 - **Fax:** 32 15 47 37 99
 - www.dewalt.be

- enduser.BE@SBDinc.com

- **Danmark**

- DeWALT (Stanley Black&Decker AS)
- Roskildevej 22
- 2620 Albertslund
- **Tel:** 70 20 15 10
- **Fax:** 70 22 49 10
- www.dewalt.dk
- kundeservice.dk@sbdinc.com

- **Deutschland**

- DeWALT Richard Klinger Str. 11
- 65510 Idstein
- **Tel:** 06126-21-0
- **Fax:** 06126-21-2770
- www.dewalt.de
- infodwge@sbdinc.com

- **Ελλάς**

- DeWALT (Ελλάς) Α.Ε. ΕΔΡΑ-ΓΡΑΦΕΙΑ : Στράβωνος 7 & Λ. Βουλιαγμένης, Γλυφάδα 166 74, Αθήνα
- **SERVICE** : Ημερος Τόπος 2 (Χάνι Αδάμ) – 193 00 Ασπρόπυργος
- **Τηλ:** 00302108981616
- **Φαξ:** 00302108983570
- www.dewalt.gr
- Greece.Service@sbdinc.com

- **España**

- DeWALT Ibérica, S.C.A. Parc de Negocios “Mas Blau” Edificio Muntadas, c/Bergadá, 1, Of. A6
- 08820 El Prat de Llobregat (Barcelona)
- **Tel:** 934 797 400
- **Fax:** 934 797 419
- www.dewalt.es
- respuesta.postventa@sbdinc.com

- **France**

- DeWALT (Stanley Black & Decker France SAS)
- 62 Chemin de la Bruyère CS 60105,
- 69574 DARDILLY Cedex
- **Tel:** 04 72 20 39 20
- **Fax:** 04 72 20 39 00
- www.dewalt.fr
- scufr@sbdinc.com

- **Schweiz/Suisse/Svizzera**

- DeWALT In der Luberzen 42
- 8902 Urdorf
- **Tel:** 044 – 755 60 70
- **Fax:** 044 – 730 70 67
- www.dewalt.ch

- service@rofoag.ch

- **Ireland**

- DeWALT Building 4500, Kinsale Road Cork Airport Business Park
- Cork, Ireland
- **Tel:** 00353-2781800
- **Fax:** 01278 1811
- www.dewalt.ie
- Sales.ireland@sbdinc.com

- **Italia**

- DeWALT via Energypark 6
- 20871 Vimercate (MB), IT
- **Tel:** 800-014353
- 39 039-9590200
- **Fax:** 39 039-9590311
- www.dewalt.it

- **Nederlands**

- DeWALT Netherlands BVPostbus 83,
- 6120 AB BORN
- **Tel:** 31 164 283 063
- **Fax:** 31 164 283 200
- www.dewalt.nl

- **Norge**

- DeWALT Postboks 4613
- 0405 Oslo, Norge
- **Tel:** 45 25 13 00
- **Fax:** 45 25 08 00
- www.dewalt.no
- kundeservice.no@sbdinc.com

- **Österreich**

- DeWALT Werkzeug Vertriebsges m.b.H
- Oberlaaerstrasse 248, A-1230 Wien
- **Tel:** 01 – 66116 – 0
- **Fax:** 01 – 66116 – 614
- www.dewalt.at
- service.austria@sbdinc.com

- **Portugal**

- DeWALT Ed. D Dinis, Quina da Fonte
- Rua dos Malhoes 2 2A 2º Esq.
- Oeiras e S. Juliao da Barra, paço de Arcos e Caxias
- 2770 071 Paço de Arcos
- **Tel:** +351 214667500
- **Fax:** +351214667580
- www.dewalt.pt

- resposta.posvenda@sbdinc.com

- **Suomi**

- DeWALT
- PL47
- 00521 Helsinki, Suomi
- **Puh:** 010 400 4333
- **Faksi:** 0800 411 340
- www.dewalt.fi
- asiakaspalvelu.fi@sbdinc.com

- **Sverige**

- DeWALT
- BOX 94
- 43122 Mölndal
- Sverige
- **Tel:** 031 68 61 60
- **Fax:** 031 68 60 08
- www.dewalt.se
- kundservice.se@sbdinc.com

- **Türkiye**

- Sanayi ve Ticaret Bakanlığı tebliğince kullanım ömrü 7 yıldır.
- Stanley Black & Decker Turkey Alet Üretim San. Tic. Ltd.Şti. AND Kozyatağı – İçerenköy Mah. Umut Sok. AND Ofis Sit. No: 10-12 / 82-83-84
- Ataşehir/İstanbul, Türkiye
- **Tel:** +90 216 665 2900
- **Faks:** +90 216 665 2901
- www.dewalt.com.tr
- info-tr@sbdinc.com

- **United Kingdom**

- DeWALT, 210 Bath Road;
- Slough, Berks SL1 3YD
- **Tel:** 01753-567055
- **Fax:** 01753-572112
- www.dewalt.co.uk
- emeaservice@sbdinc.com

- **Australia**


- DeWALT 810 Whitehorse Road Box Hill
- VIC 3128 Australia
- **Tel:** Aust 1800 338 002
- **Tel:** NZ 0800 339 258
- www.dewalt.com.au
- www.dewalt.co.nz

- **Middle East Africa**

- DeWALT P.O. Box – 17164,

- Jebel Ali Free Zone (South), Dubai, UAE
- Tel: 971 4 812 7400
- Fax: 971 4 2822765
- www.dewalt.ae
- Service.MEA@sbdinc.com

Documents / Resources

 <small>www.dewalt.ae DWD241</small>	<p>DEWALT DWD241 Dual Handle Paddle Mixer [pdf] Instructions DWD241, DWD241 Dual Handle Paddle Mixer, Dual Handle Paddle Mixer, Paddle Mixer, Mixer</p>
--	--

References

-  [2helpU](#)

Manuals+.