

DEWALT
DWH200D Dust
Extraction System



DeWalt DWH200D Dust Extraction System User Manual

[Home](#) » [Dewalt](#) » DeWalt DWH200D Dust Extraction System User Manual 

Contents

- [1 DeWalt DWH200D Dust Extraction System User Manual](#)
- [2 Additional Specific Safety Rules for Dust](#)
- [3 Intended Use](#)
- [4 OPERATION](#)
- [5 MAINTENANCE](#)
- [6 References](#)

DEWALT[®]

DeWalt DWH200D Dust Extraction System User Manual



Definitions: Safety Alert Symbols and Words

This instruction manual uses the following safety alert symbols and words to alert you to hazardous situations and your risk of personal injury or property damage.

DANGER: Indicates an imminently hazardous situation that, if not avoided, will result in death or serious injury.

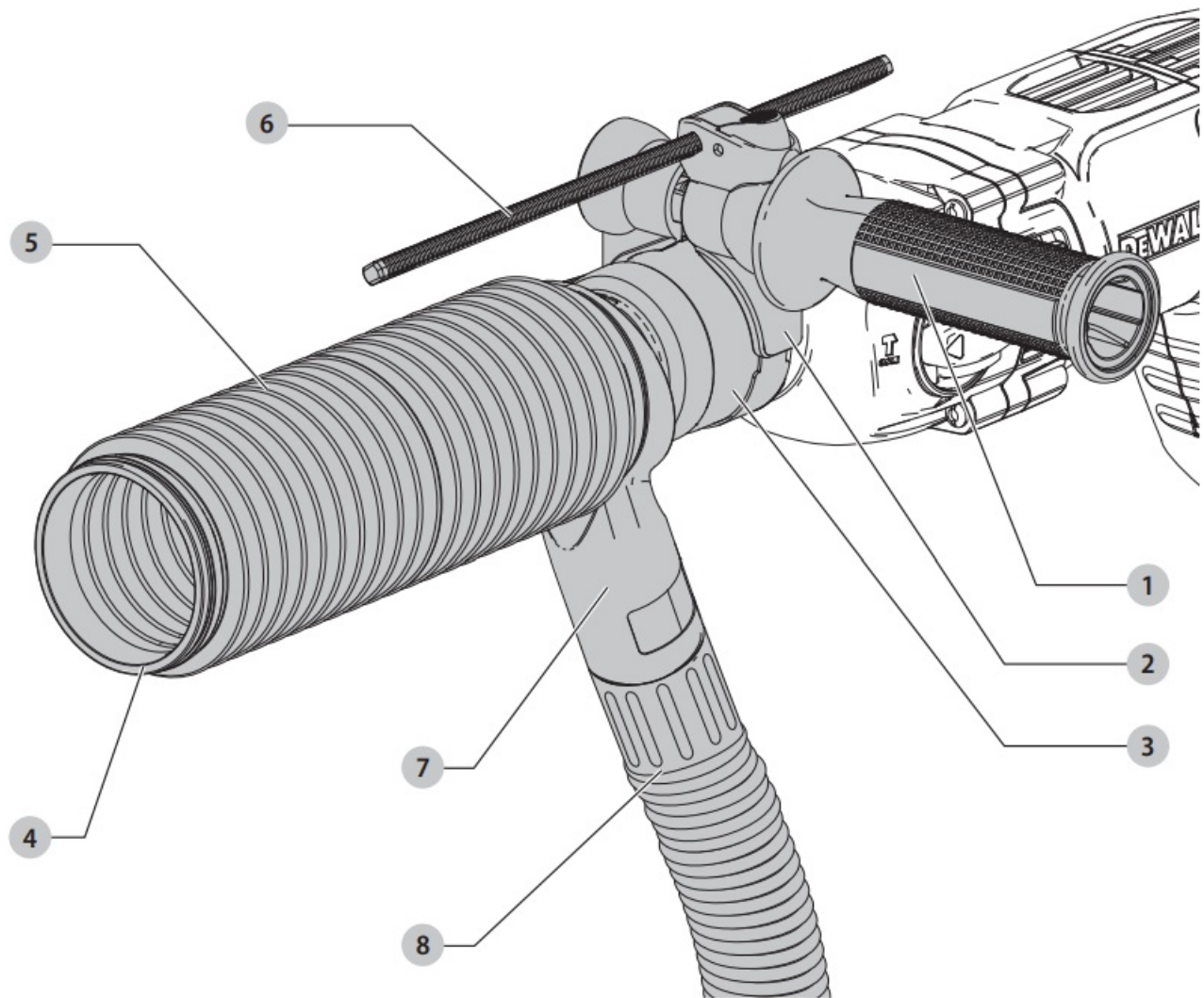
WARNING: Indicates a potentially hazardous situation which, if not avoided, could result in death or serious injury.

CAUTION: Indicates a potentially hazardous situation which, if not avoided, may result in minor or moderate injury. (Used without a word) Indicates a safety-related message.

NOTICE: Indicates a practice not related to personal injury which, if not avoided, may result in property damage.

Fig. A

Fig. A



1. Side Handle
2. Ring-opening
3. Ring adapter
4. Wear ring
5. Long bellow
6. Depth adjustment rod
7. Dust extraction connection port
8. Dust hose

WARNING: Read all safety warnings and all instructions. Failure to follow the warnings and instructions may result in electric shock, fire, and/or serious injury.

WARNING: To reduce the risk of injury, read the instruction manual. If you have any questions or comments about this or any DeWALT tool, call us toll-free at 1-800-4-DeWALT (1-[800-433-9258](tel:8004339258)).

Safety Instructions

WARNING! Always observe safety regulations applicable in your country or region to reduce the risk of fire, electric shock, and personal injury. Read all of this manual carefully before operating the attachment. Also, refer to the manual of any power tool that will be used with this attachment.

SAVE THIS MANUAL FOR FUTURE REFERENCE

- General Safety Rules a) Keep the work area clear. Cluttered areas and benches invite injuries.
- Keep children away. Do not let children come into contact with the tool or extension cord.
- Supervision is required for those under 16 years of age.
- Use appropriate tools. The intended use is described in this instruction manual. Do not force small tools or attachments to do the job of a heavy-duty tool. The tool will do the job better and safer at the rate for which it was intended.
- **WARNING:** The use of any accessory or attachment or performance of any operation with this tool, other than those recommended in this instruction manual, may present a risk of personal injury.

Additional Specific Safety Rules for Dust

Extraction Systems

- Do not use the attachment for drilling applications in wood, steel, or plastic.
- Do not use the attachment in core drilling applications.
- Do not use the attachment for chiseling applications.
- Use only the power tools recommended by DeWALT with this attachment.
- For more information about DeWALT power tools compatible with this attachment, please contact your local dealer, refer to the addresses at the back of the manual, or visit www.dewalt.com.
- Do not use the tool in damp conditions.
- Do not allow it to be used as a toy. Close attention is necessary when used by or near children.
- Use only as described in this manual. Use only the manufacturer's recommended attachments.
- Do not put any objects into openings. Do not use it with any opening blocked; keep it free of dust, lint, hair, and anything that may reduce airflow.
- Keep hair, loose clothing, fingers, and all parts of the body away from openings and moving parts.
- Do not use to pick up flammable or combustible liquids, such as gasoline, or use in areas where they may be present.

Additional Safety Information

WARNING: Never modify the unit or any part of it. Damage or personal injury could result.

WARNING: ALWAYS use safety glasses. Everyday eyeglasses are NOT safety glasses. Also, use a face or dust mask if the cutting operation is dusty. ALWAYS WEAR

CERTIFIED SAFETY EQUIPMENT

- ANSI Z87.1 eye protection (CAN/CSA Z94.3), ANSI S12.6 (S3.19) hearing protection,
- NIOSH/OSHA/MSHA respiratory protection.
- **WARNING:** Some dust created by power sanding, sawing, grinding, drilling, and other construction activities contain chemicals known to the State of California to cause cancer, birth defects, or other reproductive harm. Some examples of these chemicals are:
 - lead from lead-based paints, crystalline silica from bricks cement, and other masonry products, and
 - arsenic and chromium from chemically treated lumber.
- Your risk from these exposures varies, depending on how often you do this type of work. To reduce your exposure to these chemicals: work in a well-ventilated area, and work with approved safety equipment, such as dust masks that are specially designed to filter out microscopic particles.

- Avoid prolonged contact with dust from power sanding, sawing, grinding, drilling, and other construction activities.
- Wear protective clothing and wash exposed areas with soap and water. Allowing dust to get into your mouth, and eyes, or lay on the skin may promote the absorption of harmful chemicals.
- **WARNING:** Use of this tool can generate and/ or disperse dust, which may cause serious and permanent respiratory or other injury.
- NIOSH/OSHA-approved respiratory protection appropriate for dust exposure. Direct particles away from the face and body.
- **WARNING:** Always wear proper personal hearing protection that conforms to ANSI S12.6 (S3.19) during use. Under some conditions and duration of use, noise from this product may contribute to hearing loss.
- **CAUTION:** When not in use, place the tool on its side on a stable surface where it will not cause a tripping or falling hazard. Some tools with large battery packs will stand upright on the battery pack but may be easily knocked over.
- Air vents often cover moving parts and should be avoided. Loose clothes, jewelry, or long hair can be caught in moving parts.

Intended Use

Your dust extraction system DWH200D has been designed for the extraction of dust in professional hammer drilling in masonry or dry concrete with solid drill bits and stop bits mounted to the power tool. **DO NOT** use with hollow bits or core bits.

This dust extraction system will fit most DeWALT corded and cordless SDS Plus rotary hammers, corded hammer drills, and premium cordless drill/driver/hammer drills. **DO NOT** use under wet conditions or in the presence of flammable liquids or gases. The dust extraction system is an attachment for use with professional power tools. **DO NOT** let children come into contact with the tool. Supervision is required when inexperienced operators use this tool.

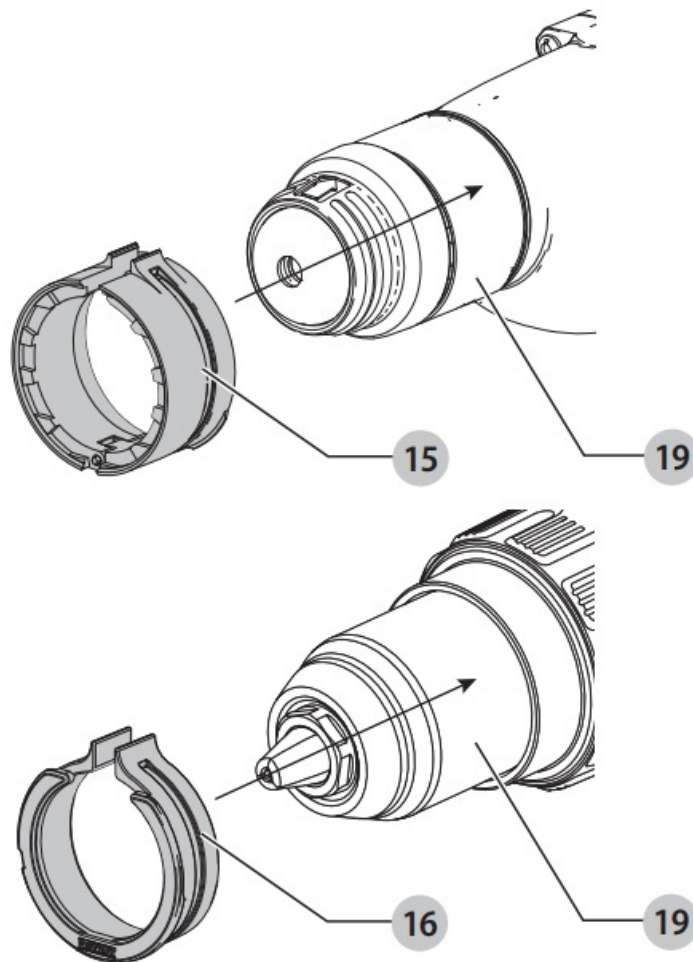
ASSEMBLY AND ADJUSTMENTS

WARNING: To reduce the risk of serious personal injury, turn the unit off and disconnect it from the power source before making any adjustments or removing/installing attachments or accessories. An accidental start-up can cause injury.

Attaching the Ring Adapter (Fig. A, B)

Your dust extraction system comes with two adapters; a metal ring adapter with a hinge for SDS Plus rotary hammers 15 and a plastic ring adapter for percussion hammer drills 16. Refer to the Fitment Guide chart for proper adapter use.

NOTE: If the diameter of the tool's collar is 54 mm, no ring adapter is needed.



1. If a ring adapter is needed, choose the correct ring adapter for your tool.
2. Open the ring adapter and slide it onto the tool's collar 19 as shown in Figure B.

NOTE: The adapter will slide back and forth on the tool. 15 19 Fig. B

FITMENT GUIDE

No adapter collar needed

- D25333, DCH293, D25263, DCH263,
- DCH273, D25262, D25323, DCH253,
- DCH213, D25223, D25213, D25123
- Toothed adapter needed DCH133, D25133, D25260, D25052,
- D25012, D25023, DWD525, DWD520
- Smooth adapter needed DCD950, DCD970, DCD985, DCD995, DCD996, DCD997

Assembling the Dust Extraction System (Fig. A, C–E)

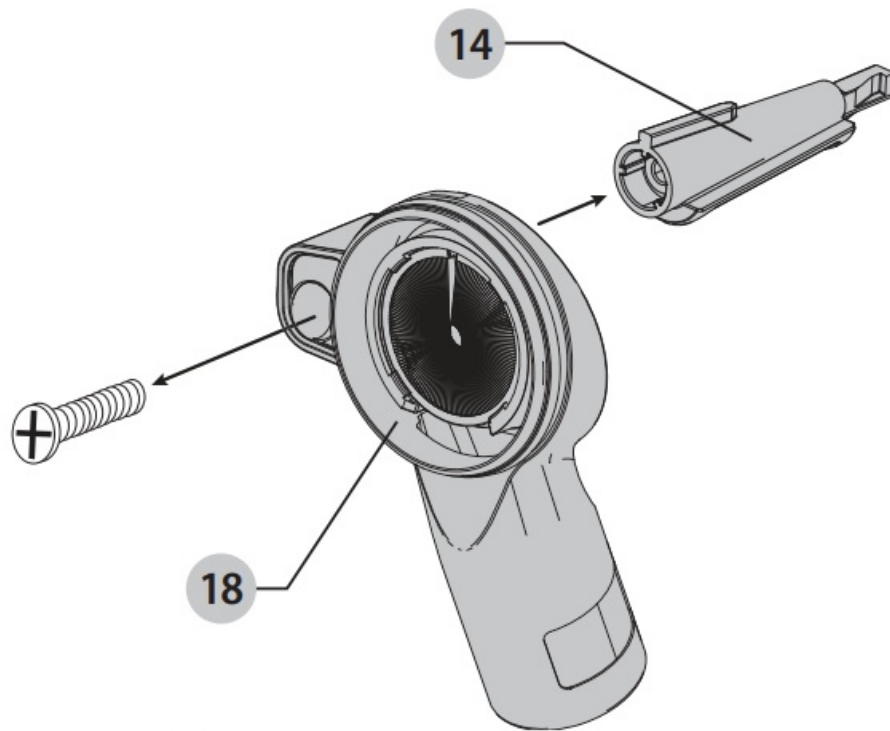
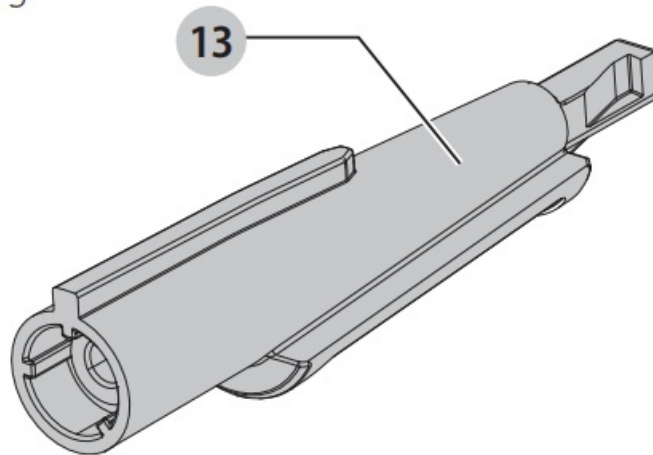
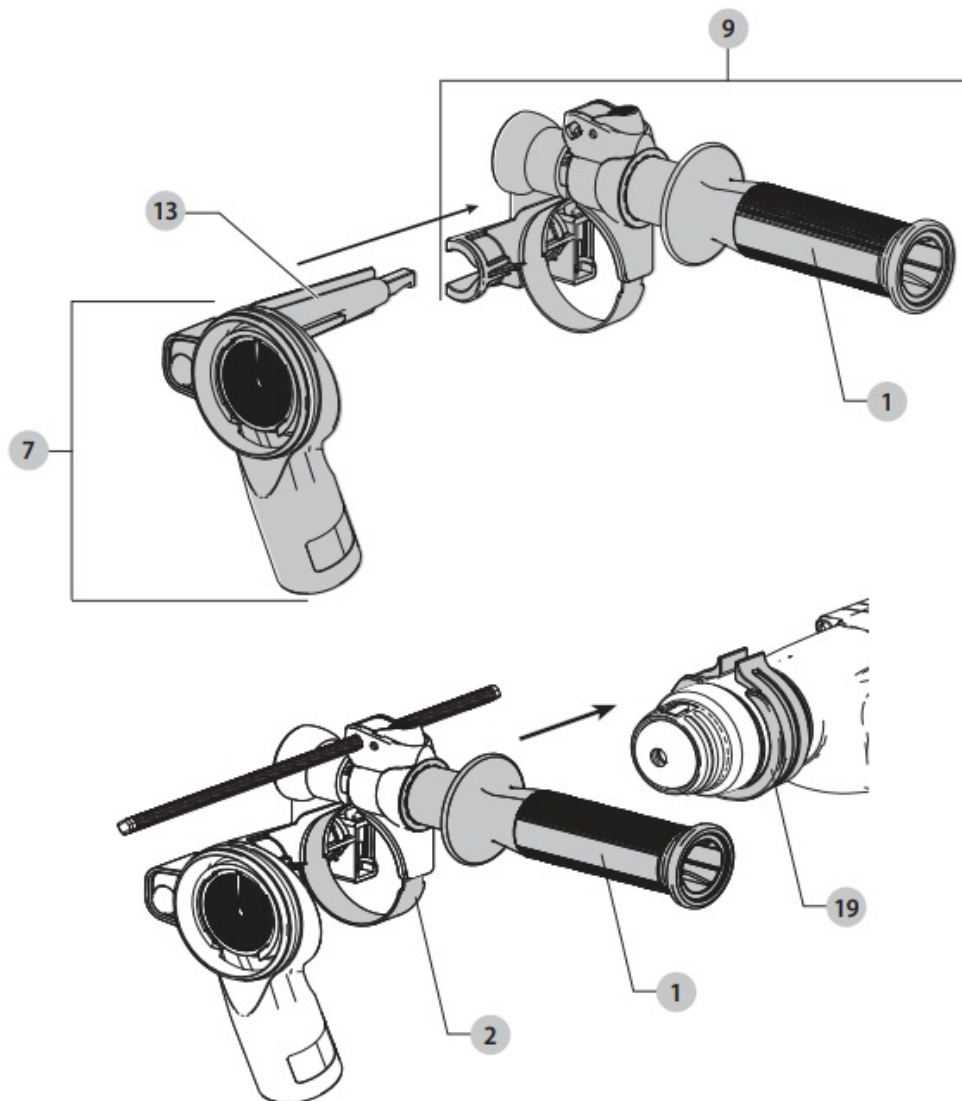


Fig. D



The standard SDS Plus tool holder adapter (short) 14 comes attached to some tools. But if your tool requires the Quick Change Chuck (QCC) SDS Plus tool holder adapter (long) 13, assemble it as follows.

1. Remove the cross-head screw from the short adapter 14 using a cross-head screwdriver (Fig. C). Then use the screw to assemble the long tool holder adapter 13 (Fig. D) to the dust brush body 18. Tighten securely.
2. Carefully slide the newly assembled dust brush and tool holder adapter into the slot on the top of the side handle assembly until you hear a click (Fig. E).



Attaching the Dust Extraction System to the Tool (Fig. A, F)

1. Slide the assembled dust extraction system onto the nose of the tool through the ring opening 2, past the tool holder and sleeve, and onto the tool's collar 19. If a ring adapter is needed, refer to Attaching the Ring Adapter.
2. Rotate the dust extraction system to the desired position on the tool.
3. Lock the assembly in place by securely tightening the side handle 1, and rotating the grip clockwise firmly so that the assembly will not rotate due to the torque of the tool.
4. Install and adjust the depth adjustment rod to the desired length.

Attaching and Removing the Bellows (Fig. A, G)

Your dust extraction system comes with a short below 10, along below 5, and a stop bit below 11. Refer to the chart below for proper usage for each below.

BELLOW USAGE

- Short below To be used with 6" (152 mm) overall length [4" (102 mm) useable] bits.
- Long below to be used with 10" (254 mm) overall length [8" (203 mm) useable] bits.
- The stop bit below can be used with SDS Plus rotary hammer stop bits.

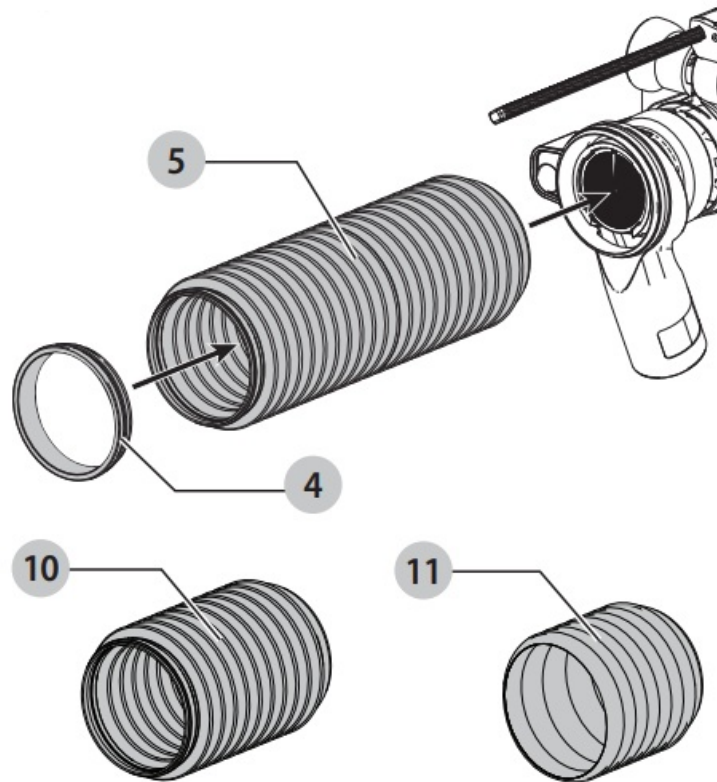
Attaching the Bellow

You can attach the below with the bit either installed or removed.

1. Push the bellow onto the end of the dust extraction unit while using a twisting motion until the bellow is secure.
2. Place the wear ring 4 on the opposite end of the bellow, closest to the workpiece.

Removing the Bellow

To remove the bellow, twist and pull the bellow away from the dust extraction unit.

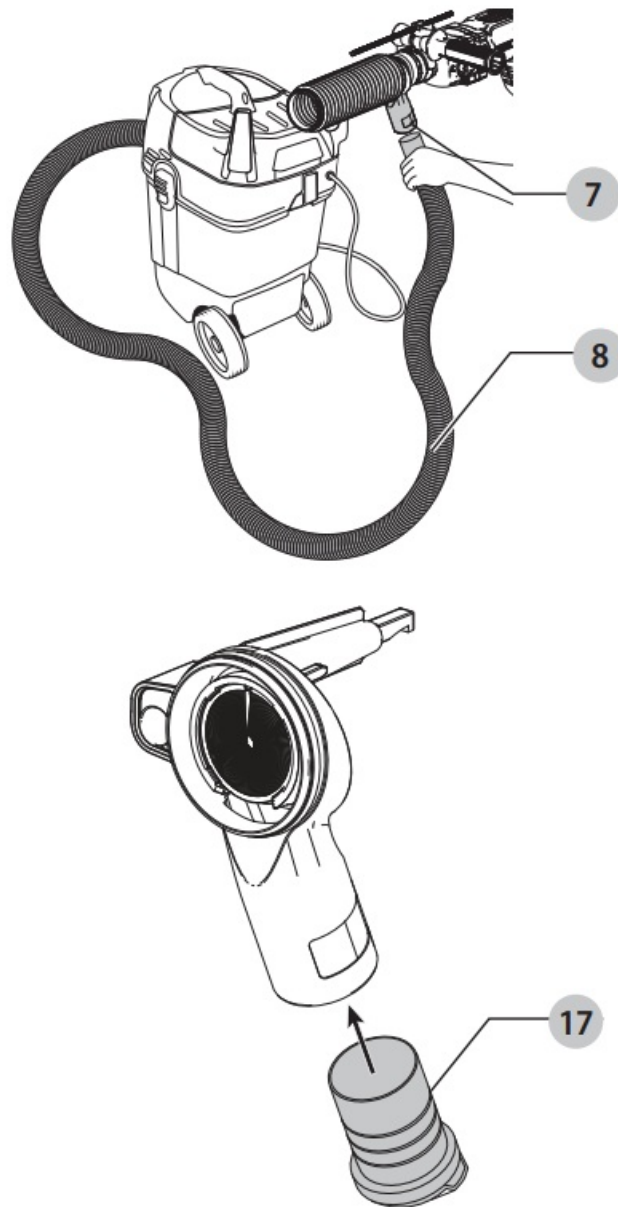


Attaching a Dust Extractor to the Dust Extraction Assembly (Fig. H–J)

1. Insert the dust hose 8 into the dust extraction connection port 7 and a dust extractor (Fig. H).

NOTE: The dust extraction system is compatible with or without a dust extractor.

2. The tool can be used with plug 17 inserted in the dust extraction connection port 7 (Fig. I). If you are using the plug, it is recommended you remove the dust from the below after drilling each hole.



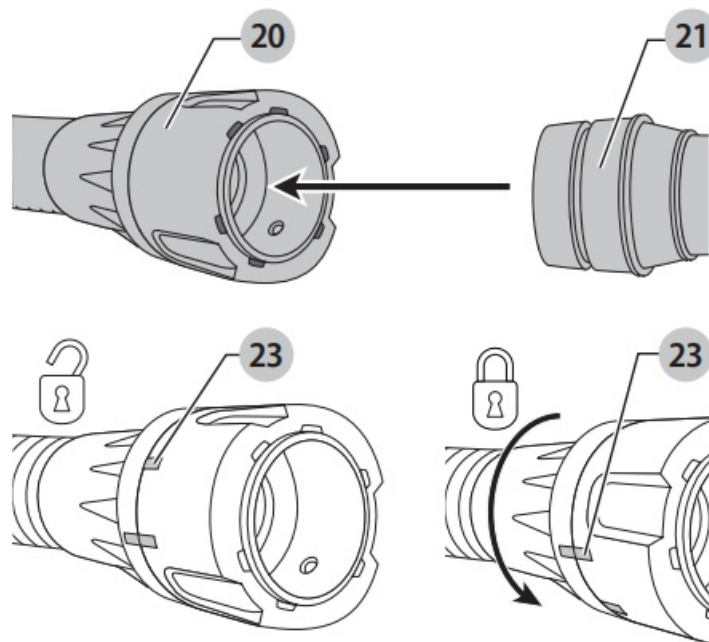
AirLock Compatible (Fig. A, H–J)

Your DeWALT dust extractor is compatible with the DeWALT AirLock connection system. The AirLock allows for a fast, secure connection between the dust hose 8 and the power tool. The AirLock connector 20 (Fig. J) connects directly to DeWALT compatible tools or through the use of an AirLock adapter 21 (available from your local DeWALT supplier).

NOTE: If using an AirLock adapter 21, ensure it is firmly attached to the tool outlet before following the steps below.

1. Ensure the collar on the AirLock connector is in the unlock position. (Refer to Figure J.) Align notches 23 on the collar and AirLock connector as shown for unlock and lock positions.
2. Push the AirLock connector onto the dust extraction system hose 8.
3. Rotate the collar to the locked position.

NOTE: The ball bearings inside the collar lock into the slot and secure the connection. The dust extraction system is now securely connected to the dust extractor. Fig. J



Removing the Dust Extraction System from the Tool (Fig. A, I)

1. Remove the dust hose 8 or the dust port plug 17 from the dust extraction connection port 7.
2. Remove the bit from the tool holder.
3. Turn side handle 1 to loosen and slide from the nose of the tool.
4. If a ring adapter was used, open and remove the adapter from the nose of the tool.

OPERATION

Instructions for Use

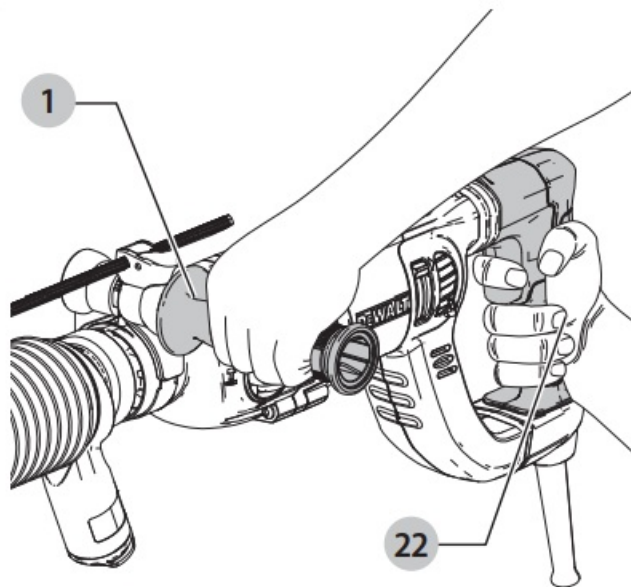
WARNING: Always observe the safety instructions and applicable regulations.

WARNING: To reduce the risk of serious personal injury, turn the tool off and disconnect the tool from the power source before making any adjustments or removing/installing attachments or accessories. Be sure the trigger switch is in the OFF position. An accidental start-up can cause injury.

Proper Hand Position (Fig. K)

WARNING: To reduce the risk of serious personal injury, ALWAYS use proper hand position as shown.

WARNING: To reduce the risk of serious personal injury, ALWAYS hold securely in anticipation of a sudden reaction. Proper hand position requires one hand on the main handle 22 of the hammer and one hand on the side handle 1 of the dust extraction system.



MAINTENANCE

Your DeWALT dust extraction system has been designed to operate over a long period with a minimum of maintenance. Continuous satisfactory operation depends upon proper tool care and regular cleaning.

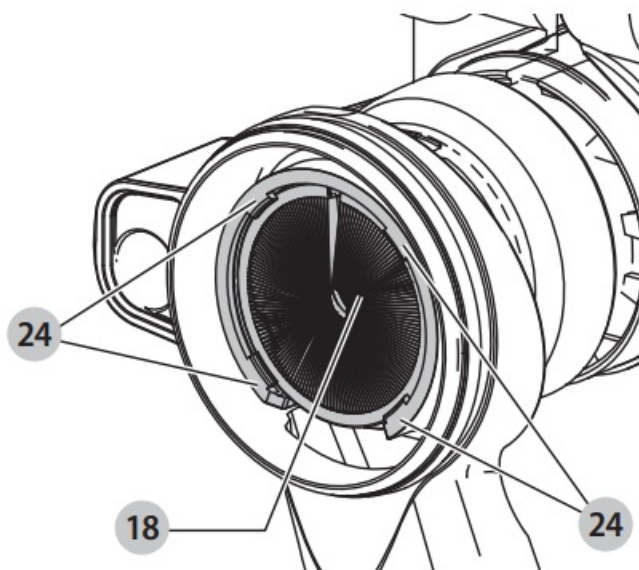
WARNING: To reduce the risk of serious personal injury, turn the tool off and disconnect the tool from the power source before making any adjustments or removing/installing attachments or accessories. Be sure the trigger switch is in the OFF position. An accidental start-up can cause injury.

WARNING: Use only DeWALT replacement parts.

Replacing the Dust Brush (Fig. L)

WARNING: Wear approved eye protection and an approved dust mask when performing this procedure. The dust brush will wear during use and will need to be replaced.

1. To remove the dust brush 18, pry it away from the four small tabs 24 holding it in place.
2. Insert the new dust brush making sure it is securely held by the four small tabs.



Cleaning

WARNING: Blow dirt and dust out of all air vents with clean, dry air at least once a week. To minimize the risk of eye injury, always wear ANSI Z87.1-approved eye protection and a dust mask when performing this procedure.

WARNING: Never use solvents or other harsh chemicals for cleaning the non-metallic parts of the tool. These chemicals may weaken the plastic materials used in these parts. Use a cloth dampened only with water and mild

soap. Never let any liquid get inside the tool; never immerse any part of the tool into a liquid.

Accessories

WARNING: Since accessories, other than those offered by DeWALT, have not been tested with this product, the use of such accessories with this tool could be hazardous. To reduce the risk of injury, only DeWALT-recommended accessories should be used with this product. Recommended accessories for use with your tool are available at extra cost from your local dealer or authorized service center. If you need assistance in locating any accessory, please contact DeWALT Industrial Tool Co., 701 East Joppa Road, Towson, MD 21286, call 1-800-4-DeWALT (1-[800-433-9258](tel:8004339258)) or visit our website: www.dewalt.com.

Repairs

WARNING: To assure product SAFETY and RELIABILITY, repairs, maintenance, and adjustment (including brush inspection and replacement, when applicable) should be performed by a DeWALT factory service center or a DeWALT-authorized service center. Always use identical replacement parts.

Register Online

Thank you for your purchase. Register your product now for:

WARRANTY SERVICE: Registering your product will help you obtain more efficient warranty service in case there is a problem with your product.

NEERSHIP: In case of an insurance loss, such as fire, flood, or theft, your registration of ownership will serve as your proof of purchase.

FOR YOUR

SAFETY: Registering your product will allow us to contact you in the unlikely event that a safety notification is required under the Federal Consumer Safety Act.

Register online at www.dewalt.com/register

Three-Year Limited Warranty DeWALT will repair, without charge, any defects due to faulty materials or workmanship for three years from the date of purchase. This warranty does not cover part failure due to normal wear or tool abuse. For further details on warranty coverage and warranty repair information, visit www.dewalt.com or call 1-800-4-DeWALT (1-[800-433-9258](tel:8004339258)). This warranty does not apply to accessories or damage caused where repairs have been made or attempted by others.

THIS LIMITED WARRANTY IS GIVEN INSTEAD OF ALL OTHERS, INCLUDING THE IMPLIED WARRANTY OF MERCHANTABILITY AND FITNESS FOR A PARTICULAR PURPOSE, AND EXCLUDES ALL INCIDENTAL OR CONSEQUENTIAL DAMAGES. Some states do not allow limitations on how long an implied warranty lasts or the exclusion or limitation of incidental or consequential damages, so these limitations may not apply to you. This warranty gives you specific legal rights and you may have other rights which vary in certain states or provinces. In addition to the warranty, DeWALT tools are covered by our:

1 YEAR OF FREE SERVICE

DEWALT will maintain the tool and replace worn parts caused by normal use, for free, at any time during the first year after purchase.

90 DAY MONEY BACK GUARANTEE

If you are not completely satisfied with the performance of your DEWALT Power Tool, Laser, or Nailer for any reason, you can return it within 90 days from the date of purchase with a receipt for a full refund – no questions asked.

LATIN AMERICA: This warranty does not apply to products sold in Latin America. For products sold in Latin America, see country-specific warranty information contained in the packaging, call the local company, or see the website for warranty information.

FREE WARNING LABEL REPLACEMENT

If your warning labels become illegible or are missing, call 1-800-4-DEWALT (1-[800-433-9258](tel:8004339258)) for a free

replacement.

DeWALT Industrial Tool Co., 701 East Joppa Road, Towson, MD 21286

(JAN20) Part No. N488282 DWH200D Copyright © 2018, 2020 DeWALT. The following are trademarks for one or more DeWALT power tools: the yellow and black color scheme, the “D” shaped air intake grill, the array of pyramids on the handgrip, the kit box configuration, and the array of lozenge-shaped humps on the surface of the tool.

Download PDF: [DeWalt DWH200D Dust Extraction System User Manual](#)

References

- [User Manual](#)

[Manuals+](#), [Privacy Policy](#)

This website is an independent publication and is neither affiliated with nor endorsed by any of the trademark owners. The "Bluetooth®" word mark and logos are registered trademarks owned by Bluetooth SIG, Inc. The "Wi-Fi®" word mark and logos are registered trademarks owned by the Wi-Fi Alliance. Any use of these marks on this website does not imply any affiliation with or endorsement.