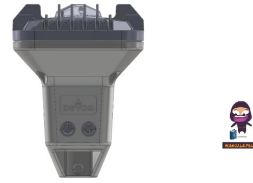


Devos LightRanger 2000 LED Telescoping Lantern



Devos LightRanger 2000 LED Telescoping Lantern Instruction Manual

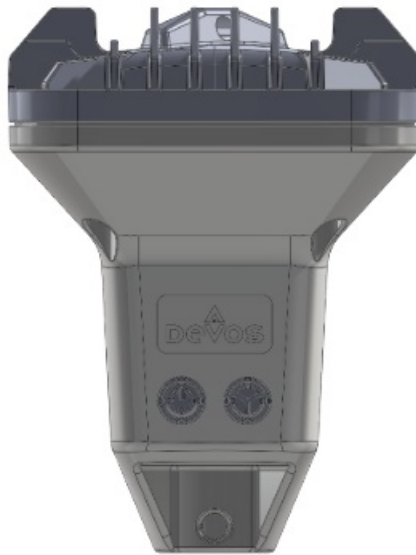
[Home](#) » [Devos](#) » Devos LightRanger 2000 LED Telescoping Lantern Instruction Manual 

Contents

- [1 Devos LightRanger 2000 LED Telescoping Lantern](#)
- [2 Specifications](#)
- [3 Product Usage Instructions](#)
- [4 FAQs](#)
- [5 Power Button Function](#)
- [6 OVERVIEW](#)
- [7 Bluetooth Pairing Instructions](#)
- [8 Model](#)
- [9 Power](#)
- [10 FCC](#)
- [11 Documents / Resources](#)
 - [11.1 References](#)
- [12 Related Posts](#)



Devos LightRanger 2000 LED Telescoping Lantern



Specifications

- **Model:** DLP2000
- **Power Input:** 5V3A, 9V3A, 12V2.5A, 20V1.5A
- **Power Output:** 5V3A, 9V3A, 12V2.5A, 20V1.5A
- **Li-ion Battery:** 7.4V, 9,000 mAh (67 watts)
- **Storage:** Store dry at room temperature and above 50% charge for longest life
- **Charge Temperature:** 32-113F degrees
- **Operating Temperature Range:** -4 to 113F

Product Usage Instructions

- **Power Button Functions:**
 - **Push the power button to control the lantern's brightness and direction:**
 - **Push once:** Full power
 - **Push twice:** Full power on two sides
 - **Push three times:** Full power on one side
 - **Push four times:** Turn off the lantern
- **Dimmer:**
 - You can adjust the brightness using the dimmer function.
- **Color Button Function:**
 - Push the color button to change the light color to White, Amber, or Red.
- **Additional Features:**
 - 360-degree LED area lighting
- **Pole receiver for easy setup**
 - Accessory and hang point for convenience
 - USB-C charging port for power in and out to charge other devices
 - Removable 360 Degree LED Lantern for versatility
- **Bluetooth Pairing Instructions:**
 - Download the Devos app from the iOS or Android app store and open it.
 - Turn on the LightRanger.

- Pair the light in the app (the app scans for available lights).
- Select and name each light to add it.
- You can now control the LightRanger 2000's brightness, direction, and color through the app, and monitor the battery level.

FAQs

Can I submerge the lantern in water?

No, do not submerge the lantern in water as it is not waterproof.

How should I dispose of the Li-ion battery?

The Li-ion battery must be disposed of properly according to local regulations for battery recycling.

What should I do if the indicator light is solid green?

Unplug the lantern when the indicator light is solid green to prevent overcharging.

Can I repair or service the lantern myself?

No, do not attempt to repair or service the lantern yourself. Seek professional assistance for any issues.

What is the operating temperature range of the lantern?

The lantern can operate within a temperature range of -4 to 113F degrees.

Power Button Function

• Power On

- Push once – full power
- Push twice – full power on two sides
- Push three times – full power on one side
- Push four times – off

• Dimmer

- With power on (any side) hold for 3 seconds – Dims brightness down, then up

• Power Off

- If the light is on (3 seconds or more) push once – Off

• Power Level

- If the light is off, hold for 3 seconds – Blinking LED indicates battery level with color. Red: 0-33% Yellow: 34-66% Green: 67-95% Solid Green: 100%

• Color Button Function

- Push to change color to White, Amber, Red

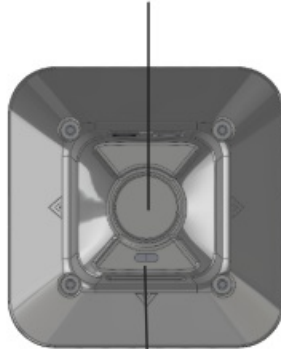
OVERVIEW

360 degree LED area lighting



Power button Color button

Pole receiver



USB-C charging port - power in and power out to charge other devices

Accessory and hang point



Snap button hole to hold light on pole



Removable
— 360 Degree
LED Lantern



— Telescoping Pole

Quick-release
Adjustment
Clamps



— Tripod



Tripod Leg Stakes 3



Bluetooth Pairing Instructions

1. Download the Devos app from iOS or Android app store. Open the app.
2. Turn on the LightRanger.
3. Pair light in the app. (App scans for available lights.) To add, select & name each light.
4. You can now control the LightRanger 2000's brightness, direction, and color. You can also see the battery level.

DevosOutdoor.com. Devos 565 N Main St, Springville, UT 84663

Model

- DLP2000
- Patent Pending
- Designed in Utah
- Made in China

Power

- **Input:** 5V3A 9V3A 12V2.5A 20V1.5V
- **Output:** 5V3A 9V3A 12V2.5A 20V1.5V
- **Li-ion battery** 7.4V 9,000 mAh – 67 watts
- **Store dry at room temperature and above 50% charge** for longest life
- **Charge temperature** 32-113F degrees
- **Operating temperature range** -4 to 113F

Warning

1. Do not submerge in water
2. Unplug when the indicator light is solid green.
3. Contains a Li-ion battery. Must be disposed of properly
4. Do not attempt repair or service
5. Do not operate in temperatures above 113F
6. Do not subject batteries to temperatures above 140F

- DevosOutdoor.com/pages/warranty.
- DevosOutdoor.com/pages/patents.

FCC

FCC Warning Statement

Changes or modifications not expressly approved by the party responsible for compliance could void the user's authority to operate the equipment. This equipment has been tested and found to comply with the limits for a Class B digital device, under Part 15 of the FCC Rules. These limits are designed to provide reasonable protection against harmful interference in a residential installation. This equipment generates uses and can radiate radio frequency energy and, if not installed and used by the instructions, may cause harmful interference to radio

communications. However, there is no guarantee that interference will not occur in a particular installation. If this equipment does cause harmful interference to radio or television reception, which can be determined by turning the equipment off and on, the user is encouraged to try to correct the interference by one or more of the following measures:

- Reorient or relocate the receiving antenna.
- Increase the separation between the equipment and the receiver.
- Connect the equipment to an outlet on a circuit different from that to which the receiver is connected.
- Consult the dealer or an experienced radio/TV technician for help.


FCC Radiation Exposure Statement

The antennas used for this transmitter must be installed to provide a separation distance of at least 20 cm from all persons and must not be co-located for operating in conjunction with any other antenna or transmitter. This device complies with Part 15 of the FCC Rules.

Operation is subject to the following two conditions:

1. This device may not cause harmful interference.
2. This device must accept any interference received, including interference that may cause undesired operation.

Documents / Resources

	Devos LightRanger 2000 LED Telescoping Lantern [pdf] Instruction Manual LightRanger 2000, LightRanger 2000 LED Telescoping Lantern, LED Telescoping Lantern, Telescoping Lantern, Lantern
---	--

References

- [User Manual](#)

[Manuals+](#), [Privacy Policy](#)

This website is an independent publication and is neither affiliated with nor endorsed by any of the trademark owners. The "Bluetooth®" word mark and logos are registered trademarks owned by Bluetooth SIG, Inc. The "Wi-Fi®" word mark and logos are registered trademarks owned by the Wi-Fi Alliance. Any use of these marks on this website does not imply any affiliation with or endorsement.