



devolo Magic 2 LAN Triple Powerline Adapter Installation Guide

[Home](#) » [devolo](#) » devolo Magic 2 LAN Triple Powerline Adapter Installation Guide 

Contents

- [1 devolo Magic 2 LAN Triple Powerline Adapter](#)
- [2 Information](#)
- [3 Caution](#)
- [4 Help](#)
- [5 Support](#)
- [6 Documents / Resources](#)
 - [6.1 References](#)
- [7 Related Posts](#)



devolo Magic 2 LAN Triple Powerline Adapter



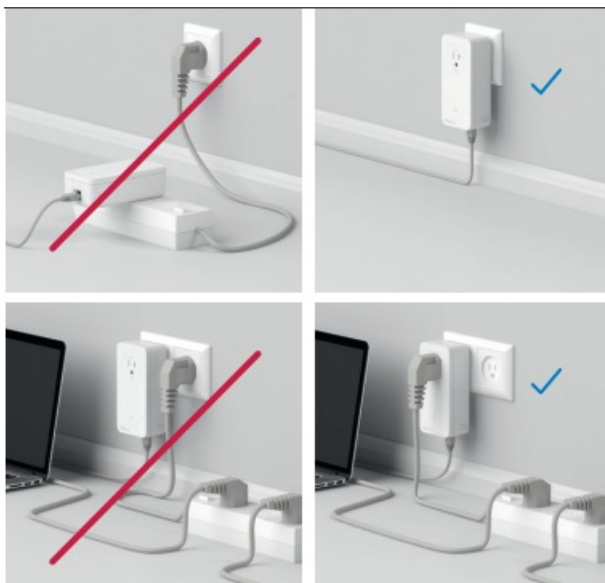
Notice

Damage to the device from the environment. High temperature fluctuations and moisture can damage both the product and the power line.

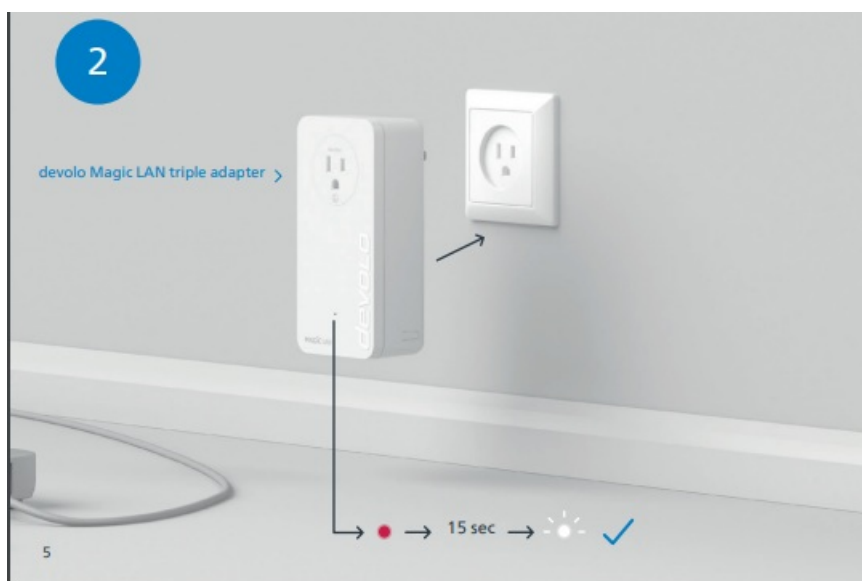
The device is for indoor use and in dry conditions only.

Set up, change and monitor: the intuitive devolo Home Network App for controlling devolo Magic adapters.

Information



Plug the devolo Magic LAN triple adapter into an available wall outlet and wait until the LED flashes white (approx. 15 seconds).



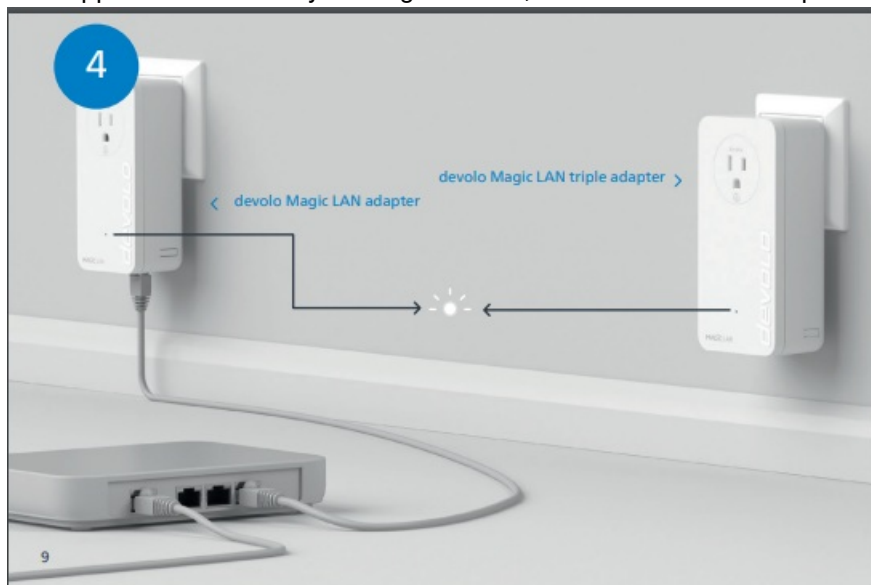
Within 3 minutes, press the button on the side of your devolo Magic LAN adapter which is connected to the router.

Caution

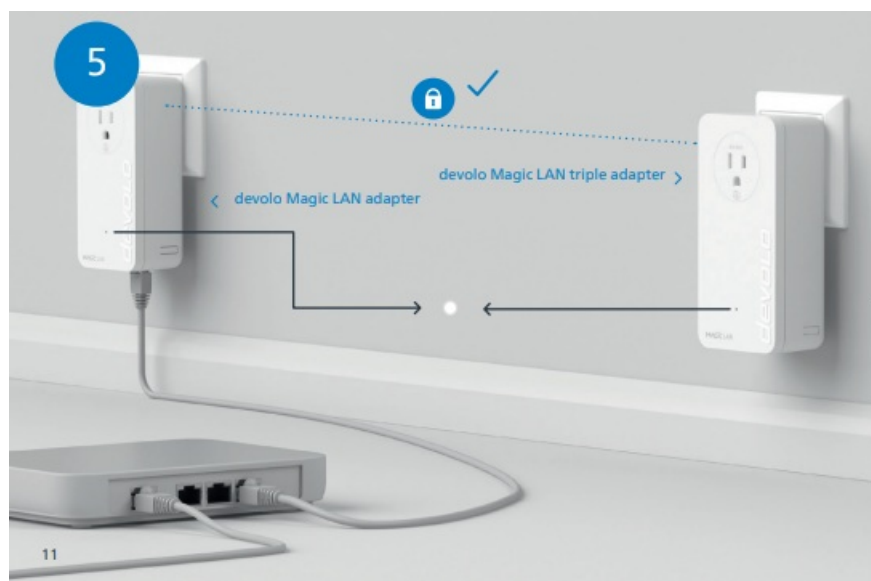
Tripping hazard from connected network cables. Tripping over the network cable can cause minor injuries and bruises. Lay the network cable with accessibility in mind. Ensure that the power outlet and all connected network devices are easily accessible. Ethernet cable (Cat.5e UTP) not for in-wall use



The encryption process happens automatically. During this time, the LEDs on both adapters flash white



The process is finished when the LEDs on all the devices turn solid white. The process takes a maximum of 3 minutes.

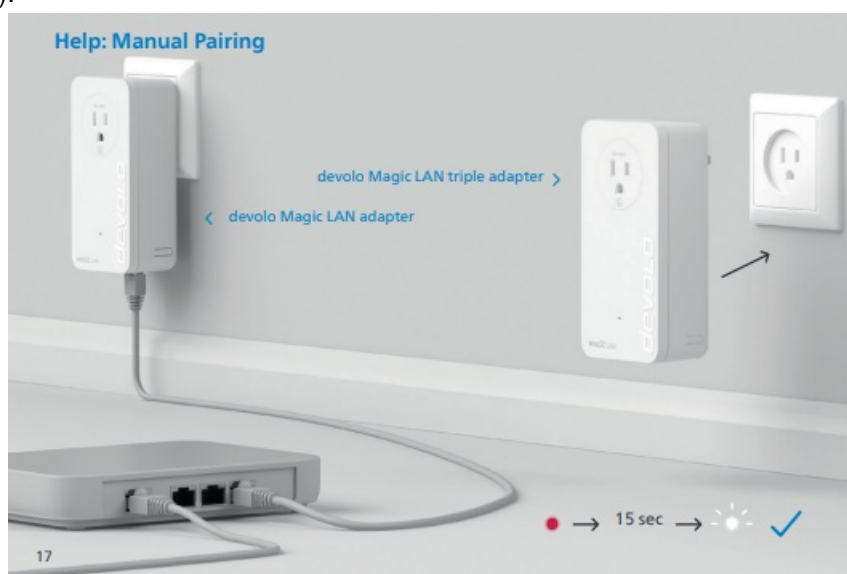


PLC button		
Time button is pressed	Action	LED behavior
1 second	Start pairing with other devolo Magic adapters	Flashing white
> 10 seconds	Reset devolo adapter to factory settings	Solid red

PLC LED	The devolo Magic LAN adapter ...	LED behavior
	... is working perfectly. It is connected to other devolo Magic adapters.	Solid white
	... is currently pairing with another adapter.	Fast flashing white
	... is not connected to the network*	Flashing red
	... is in standby mode.	Slow flashing white
	... is currently undergoing a software update.	Alternating white and red
	... has a poor Powerline connection.	Solid white followed by short flashing red
	... is currently in the start-up process.	Solid red
	... cannot see any other devolo Magic adapters.	
	... no longer has any LED function since it was disabled by the user.	None

Help

If automatic pairing during initial installation was unsuccessful, you can pair the Magic adapters manually. Plug the devolo Magic LAN adapter into an available wall outlet and wait until the LED flashes white (approx. 15 seconds).



Within 3 minutes, press the button on the side of your devolo Magic LAN adapter, which is connected to the router. Then press the button on your second Magic LAN adapter. When all of the LEDs light up white, pairing has been completed successfully.

US | CAN | (English) Limited Warranty: 2 years

If your devolo device is found to be defective during initial installation or within the warranty period, please contact the store where you purchased the product. The store will take care of the repair or warranty claim for you. The complete limited warranty conditions can be found at <http://www.devolo.com/support/warranty>

Support

United States of America www.devolo.com/support

Documents / Resources



[devolo Magic 2 LAN Triple Powerline Adapter](#) [pdf] Installation Guide
Magic 2 LAN Triple, Powerline Adapter, Magic 2, LAN Triple Powerline Adapter, Magic 2 LAN Triple Powerline Adapter

References

- [Internet anywhere - devolo cures weak Wi-Fi | devolo AG](#)
- [dLAN Cockpit software for devolo Powerline products | devolo](#)
- [Support - devolo AG](#)
- [Processing](#)