



## devolo Magic 1944580 WiFi Mini Addition Installation Guide

[Home](#) » [devolo Magic](#) » devolo Magic 1944580 WiFi Mini Addition Installation Guide 

*devolo Magic 1944580 WiFi Mini Addition  
Installation Guide*



**Download now**

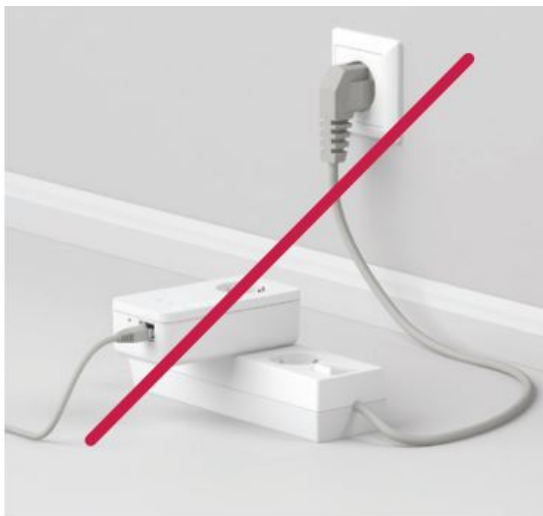


[App Store](#)  
[Google Play Store](#)

<https://www.devolo.gr/ypostirixi/lipseis/download/devolo-cockpit>

Set up, extend, adapt, maintain an overview: the intuitive devolo Home Network App for controlling the devolo Magic adapter.

1



Make a note of the Wi-Fi key on the back of the devolo Magic WiFi mini adapter.

2



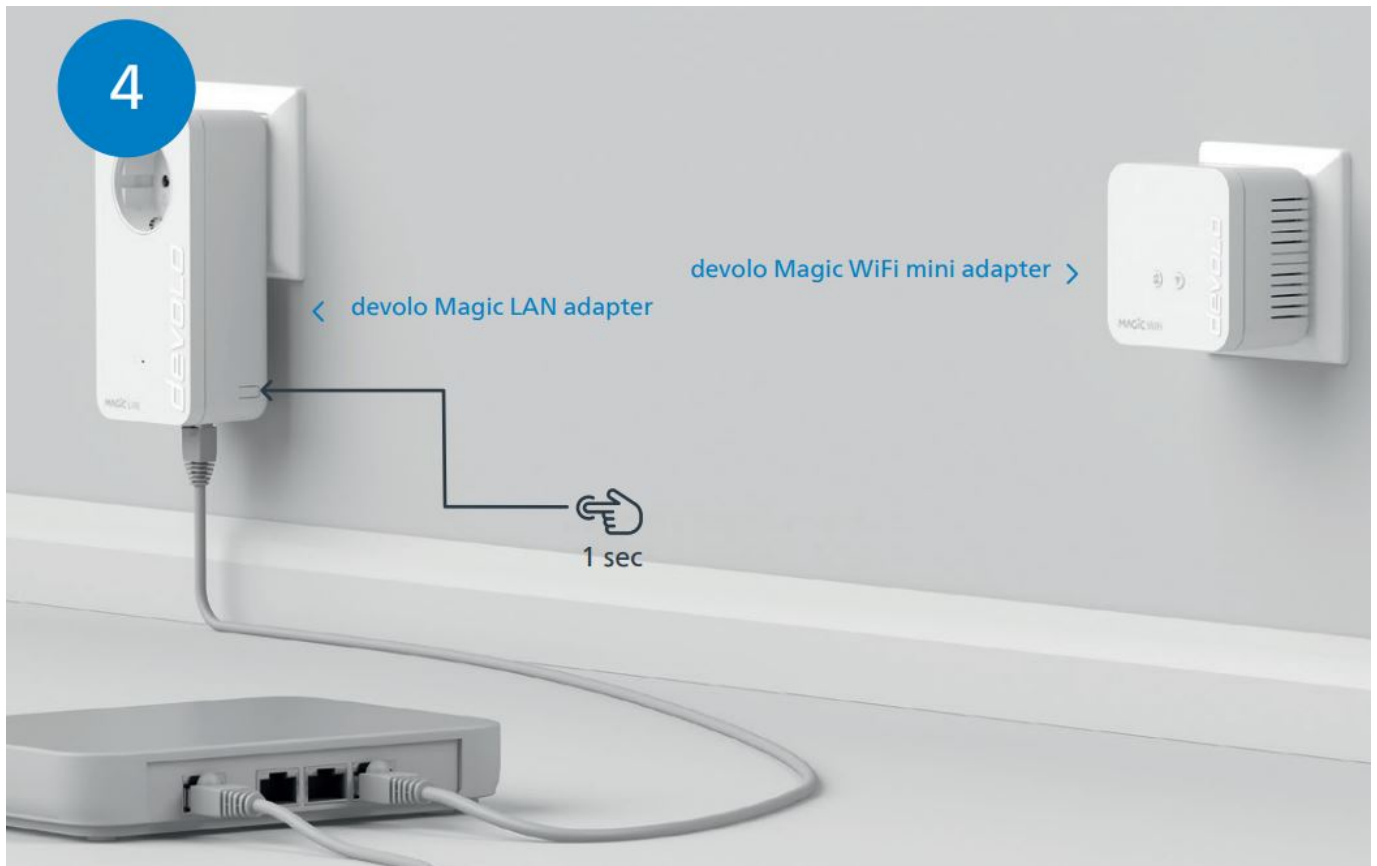
Connect the devolo Magic WiFi mini adapter to a free wall socket and wait until the LED quickly flashes white (approx. 1 minute).

3

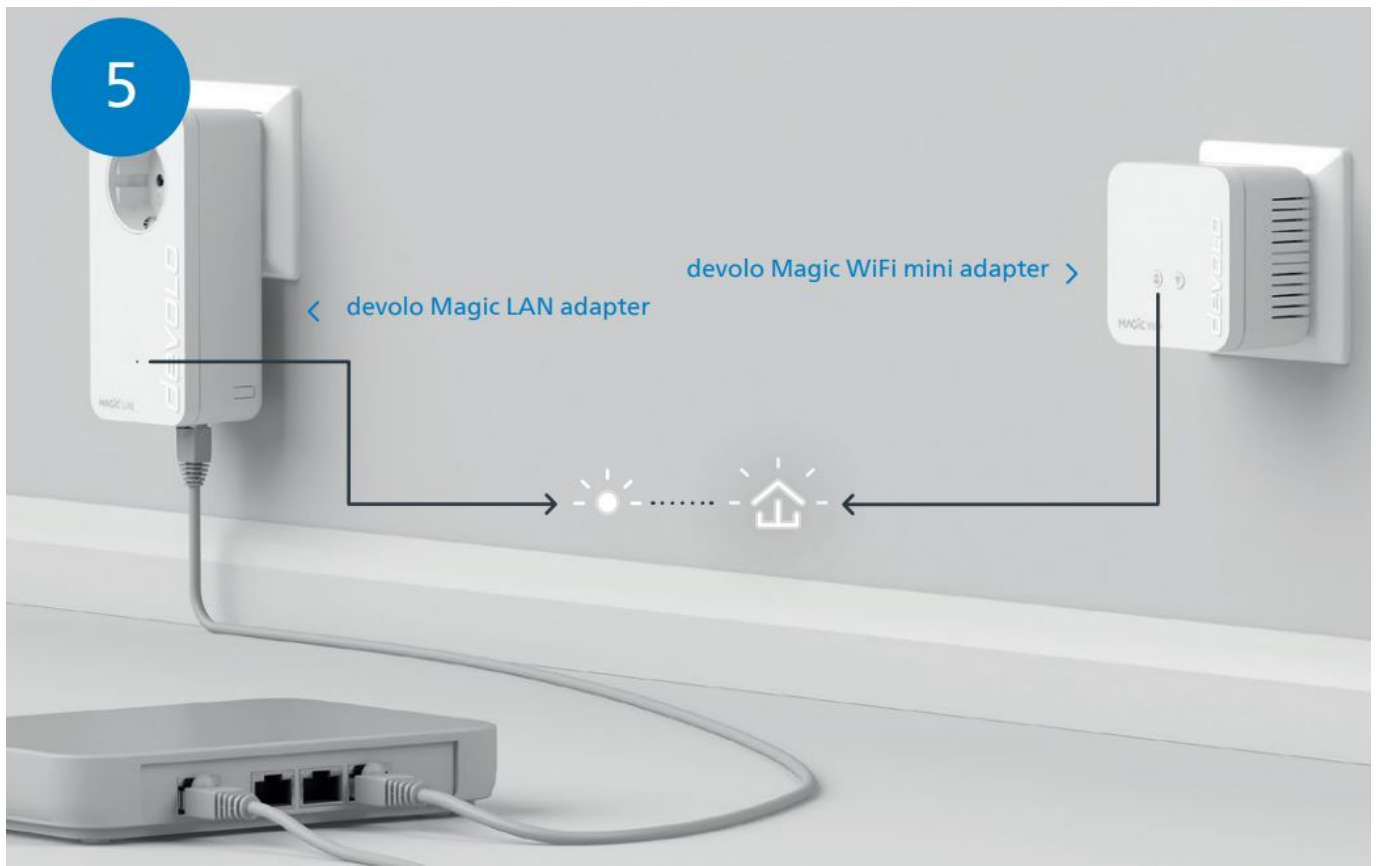
devolo Magic WiFi mini adapter >



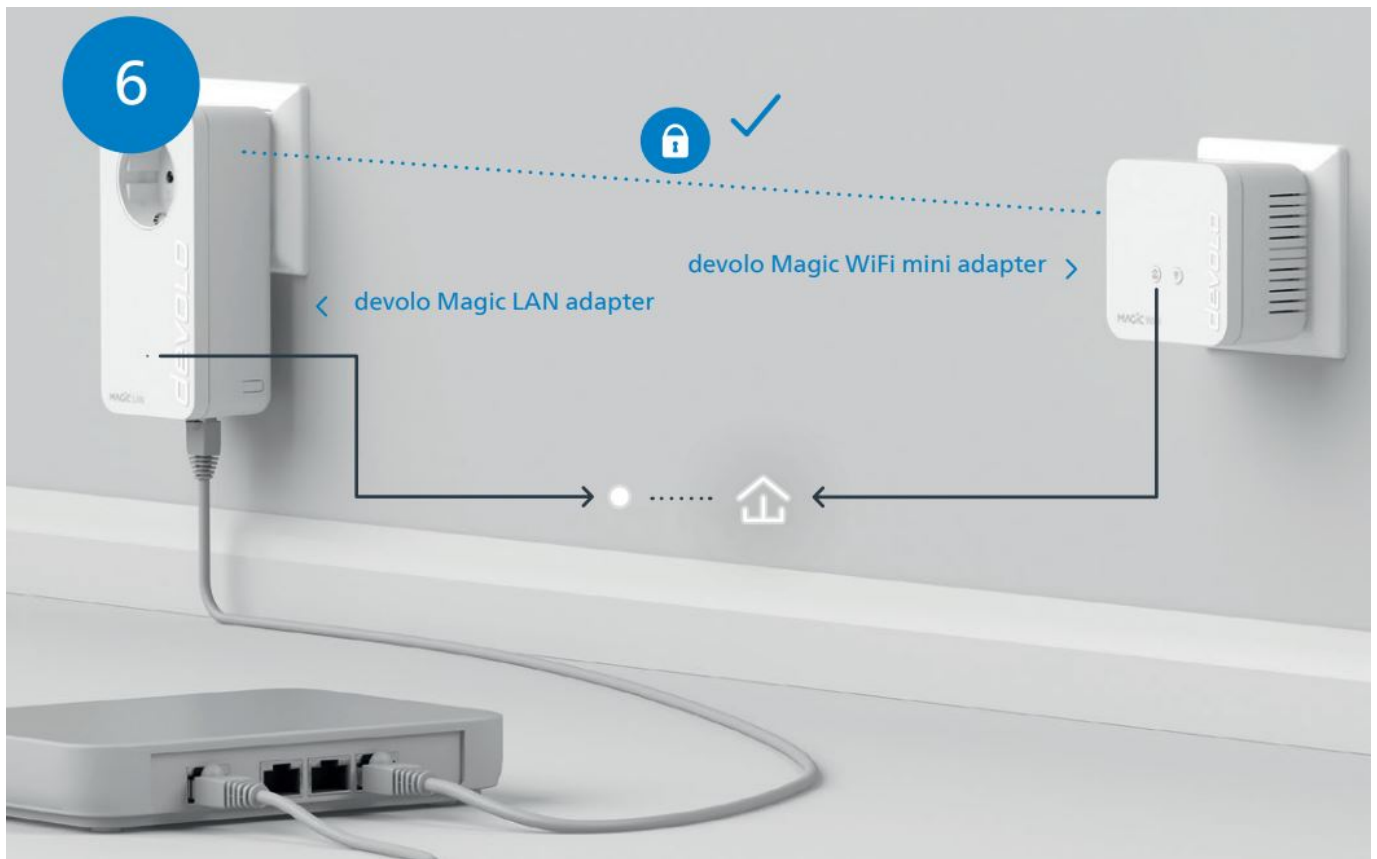
Within 3 minutes, press the button on the side of your devolo Magic LAN adapter which is connected to the router.



The encryption process takes place automatically. During this time, the LEDs of both adapters flash white.



The process is complete as soon as all of the LEDs on the devices light up solid white. The process takes a maximum of 3 minutes.



Set up the Wi-Fi connection on your smartphone, etc. The basic installation process is complete. If you have not so far had a Magic WiFi adapter on your network, you can subsequently and optionally set up Mesh Wi-Fi technology.



To do this, the Wi-Fi access data is transferred as a one-off to the devolo Magic WiFi mini adapter at the press of



a button. This gives you the best Wi-Fi coverage in any room.

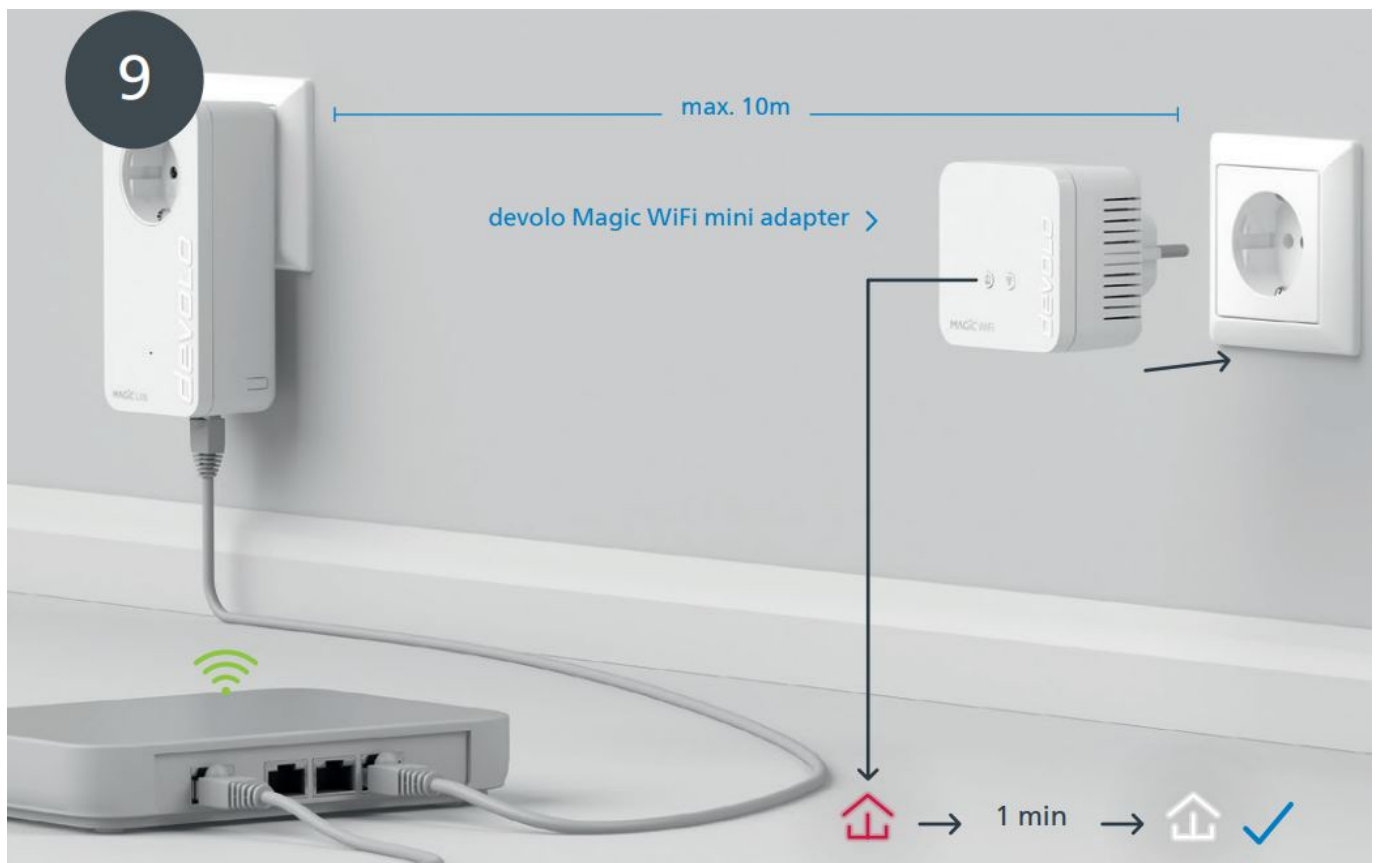
## 8

### Optional Mesh Technology

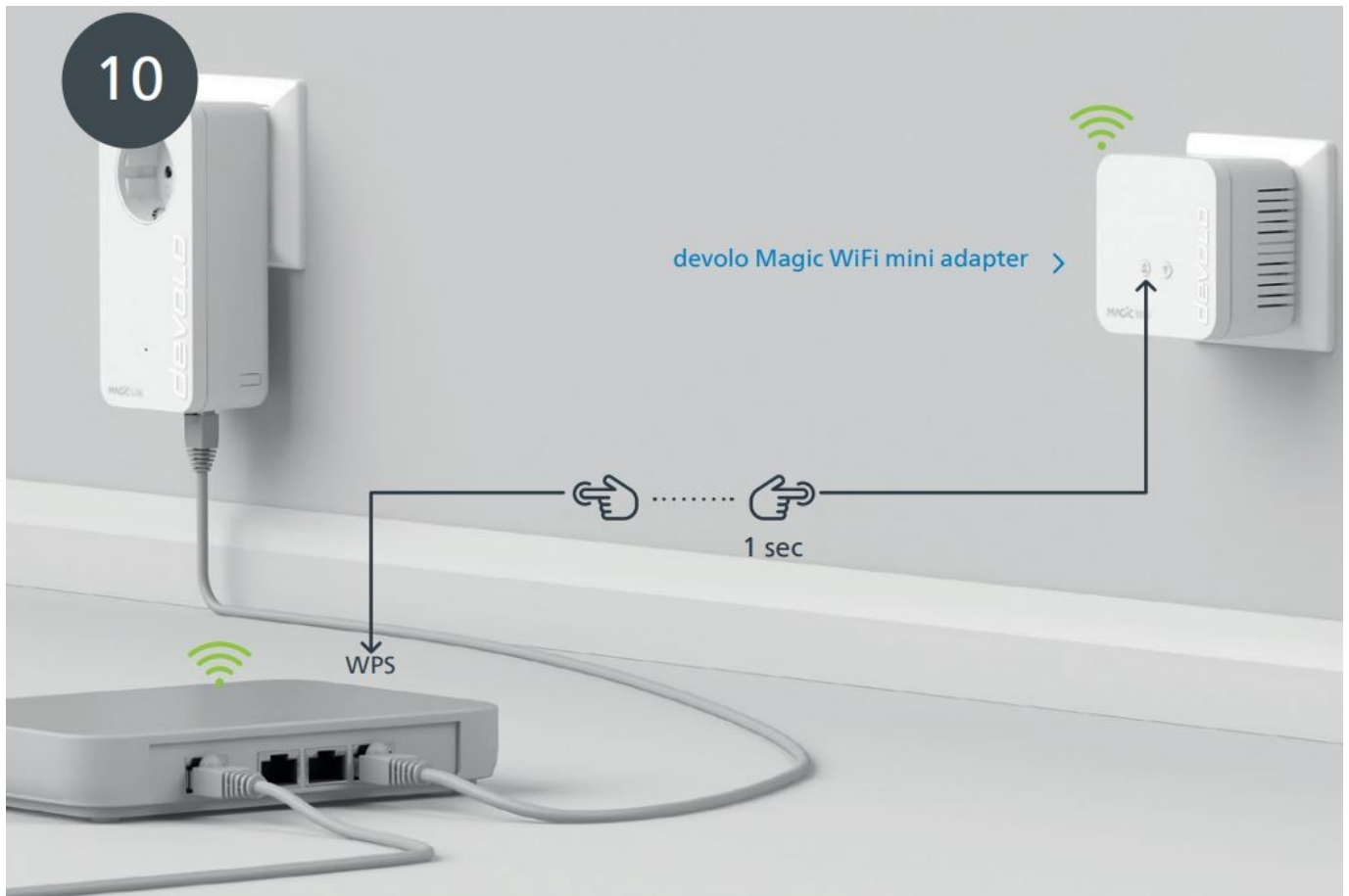


Connect the devolo Magic WiFi mini adapter for the initial setup process to a free wall socket near your router (max. distance 10 metres) and wait around 1 minute until the LED lights up white.

## 9



Briefly press the button on your devolo Magic WiFi mini adapter. After the button is pressed, the LED flashes white. Press the WPS button on your router within 2 minutes. Please consult your router's instruction for use to find out how long to press the button for.



Once the LED lights up solid white, the process has been completed successfully.







You can now disconnect your devolo Magic WiFi mini adapter and place it in your preferred location. Done! devolo Magic adapters get you seamlessly onto the Internet anywhere in the house with the strongest possible connection.

12





PLC button 		
Duration of the button press	Action	LED behaviour
1 second	Start pairing with other devolo Magic adapters (on WiFi adapters: start ConfigSync)	Flashes white
> 10 seconds	Reset devolo adapter to factory settings	Lights up red
PLC LED 	The devolo Magic WiFi mini adapter ...	LED behaviour
	... is working perfectly. It is connected to other devolo Magic adapters.	Lights up white
	... is currently establishing a pairing connection with another adapter.	Quickly flashes white
	... is not connected to the network*	Flashes red
	... is in standby mode.	Slowly flashes white
	... is currently undergoing a software update.	Alternately flashes white and red
	... has a poor Powerline connection.	Lights up white and then briefly flashes red
	... is currently in the start-up process. ... cannot see any other devolo Magic adapters.	Lights up red
	... no longer has any LED function since it was disabled by the user.	None

WiFi button 		
Duration of the button press	Action	LED behaviour
1 second	WPS function is being carried out	Flashes white
> 3 seconds	Wi-Fi is being switched off	LED goes out
WiFi LED 	The devolo Magic WiFi mini adapter ...	LED behaviour
	... has a fault-free connection to the Internet.	Lights up white
	... is attempting to establish a connection via WPS.	Flashes white
	... no longer has any LED function since it was disabled by the user.	Off

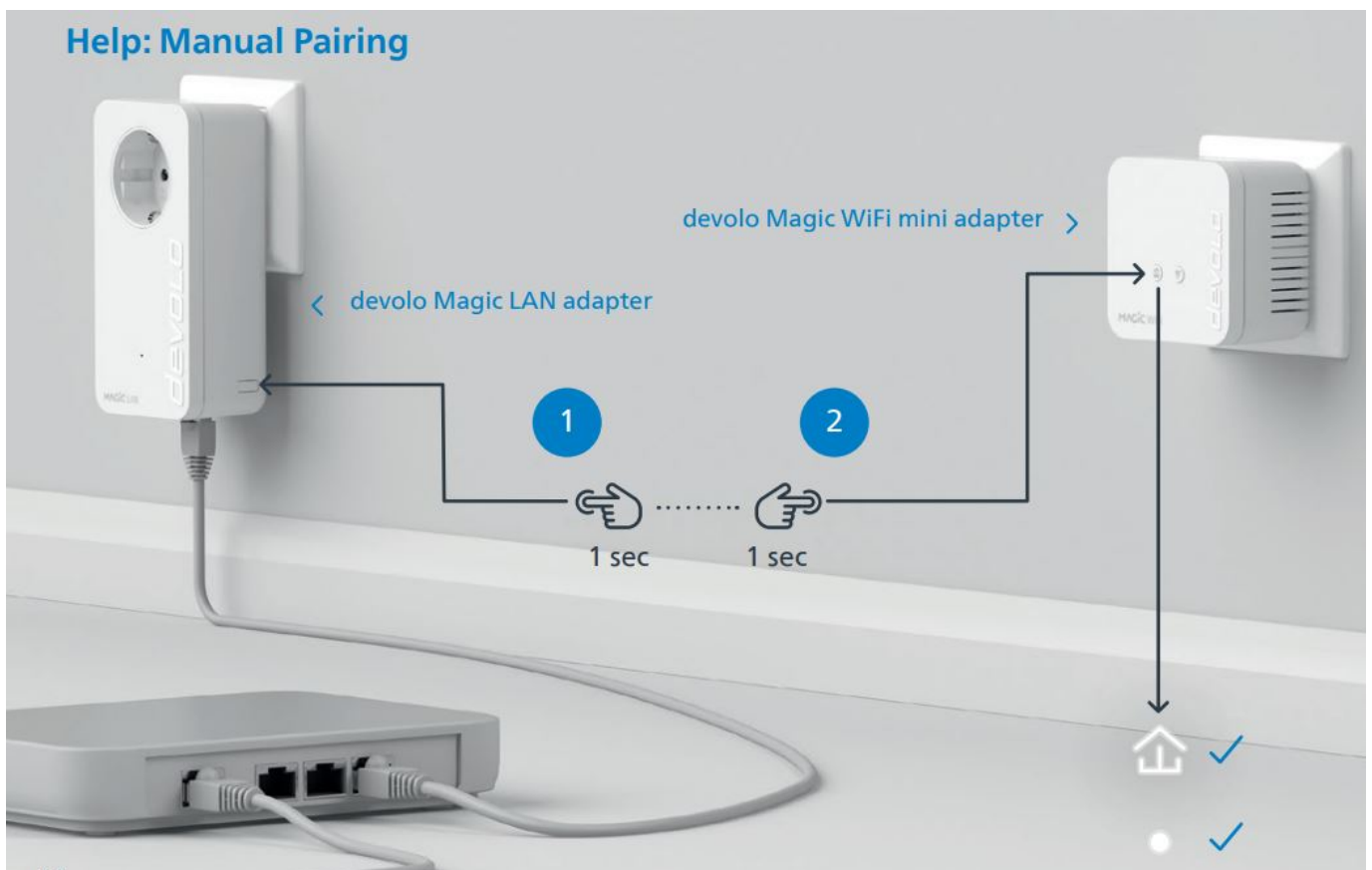
\* On page 41 you will see how to carry out manual pairing.

## Help: Manual Pairing



Help: If automatic pairing during initial installation was unsuccessful, you can carry out manual pairing of the Magic adapters. Connect the devolo Magic WiFi mini adapter to a free wall socket and wait until the LED flashes white (approx. 1 minute)

## Help: Manual Pairing



Within 3 minutes, press the button on the side of your devolo Magic LAN adapter which is connected to the router. Second, press the LED on your Magic WiFi mini adapter. As soon as all of the LEDs light up white, pairing has

been completed successfully

### Warranty: 3 years

If your devolo device is found to be defective during initial installation or within the warranty period, please contact the vendor who sold you the product. The vendor will take care of the repair or warranty claim for you. The complete warranty conditions can be found at [www.devolo.com/warranty](http://www.devolo.com/warranty)

Deutschland [www.devolo.de/service](http://www.devolo.de/service)

Österreich [www.devolo.at/service](http://www.devolo.at/service)

Schweiz/Suisse/Svizzera [www.devolo.ch/service](http://www.devolo.ch/service) [www.devolo.ch/fr/service](http://www.devolo.ch/fr/service)

Great Britain [www.devolo.co.uk/service](http://www.devolo.co.uk/service)

France [www.devolo.fr/service](http://www.devolo.fr/service)

Italia [www.devolo.it/supporto](http://www.devolo.it/supporto)

Espana [www.devolo.es/servicios](http://www.devolo.es/servicios)

Portugal [www.devolo.pt/Apolo](http://www.devolo.pt/Apolo)

Nederlands [www.devolo.nl/service](http://www.devolo.nl/service)

Belgien/Belgique/Belgie [www.devolo.be/service](http://www.devolo.be/service)

[www.devolo.be/fr/service](http://www.devolo.be/fr/service)

Sweden [www.devolo.se/support](http://www.devolo.se/support)

Ελλάδα [www.devolo.gr/ypostirixi](http://www.devolo.gr/ypostirixi)



WiFi Key:

devolo AG · Charlottenburger Allee 67 · 52068 Aachen · Germany [devolo.com](http://devolo.com)


#### Contents

[1 Documents /](#)

[Resources](#)

[2 Related Posts](#)

### Documents / Resources

	<a href="#">devolo Magic 1944580 WiFi Mini Addition</a> [pdf] Installation Guide 1944580, WiFi Mini Addition
---	---