



# deviceroy ARIA1 Intelligent and Versatile Modem User Manual

[Home](#) » [deviceroy](#) » deviceroy ARIA1 Intelligent and Versatile Modem User Manual 



## ARIA1 Intelligent and Versatile Modem User Manual

### Contents

- [1 WHAT'S IN THE BOX:](#)
- [2 WHAT YOU WILL NEED:](#)
- [3 QUICKSTART:](#)
- [4 OPTIONAL ACCESSORIES:](#)
- [5 FCC NOTICE](#)
- [6 Documents / Resources](#)
  - [6.1 References](#)
- [7 Related Posts](#)

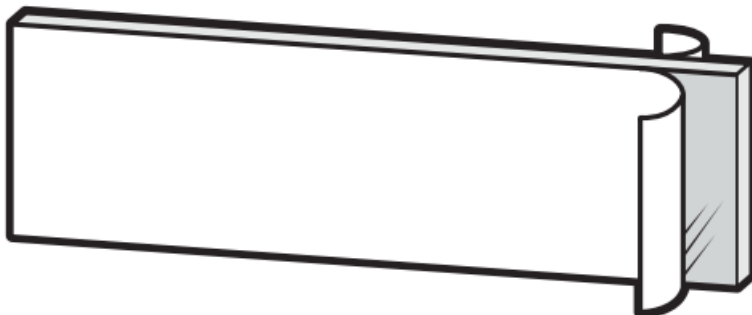
### WHAT'S IN THE BOX:



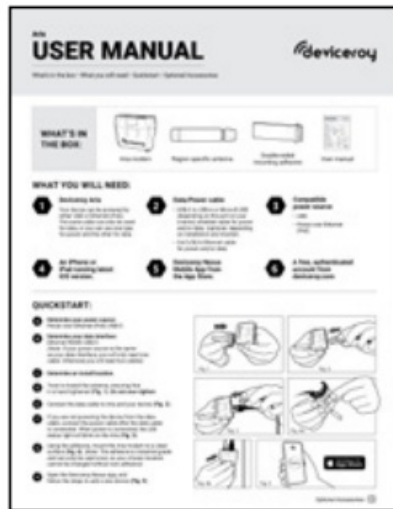
Aria modem



Region specific antenna



Double-sided mounting adhesive



User manual

## WHAT YOU WILL NEED:

### 1. Deviceroy Aria

Your device can be powered by either USB or Ethernet (PoE).

The same cable can also be used for data, or you can use one type for power and the other for data.

### 2. Data/Power cable

- USB-C to USB-A or Micro-B USB (depending on the port on your inverter) shielded cable for power and/or data. (optional, depending on installation and inverter)
- Cat 5/5E/6 Ethernet cable for power and/or data.

### 3. Compatible power source

- USB
- Power over Ethernet (PoE)

### 4. An iPhone or

iPad running latest iOS version.

### 5. Deviceroy Nexus

Mobile App from the App Store.

### 6. A free, authenticated account from [deviceroy.com](https://deviceroy.com)

## QUICKSTART:

### A Determine your power source:

Power over Ethernet (PoE) USB/C.

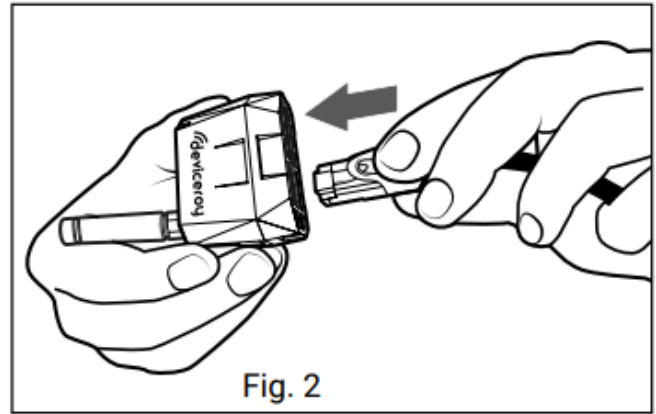
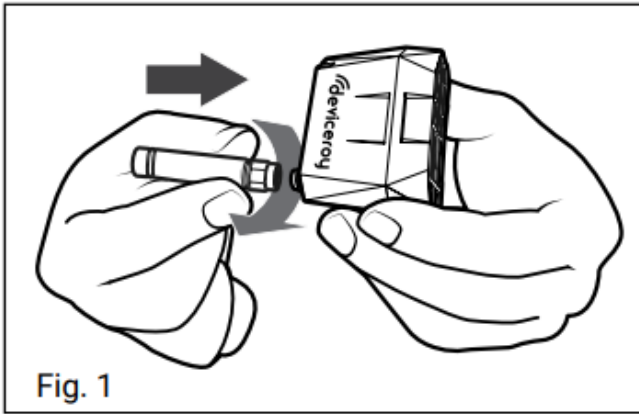
### B Determine your data interface:

Ethernet RS485 USB/C.

(Note: If your power source is the same as your data interface, you will only need one cable. Otherwise you will need two cables)

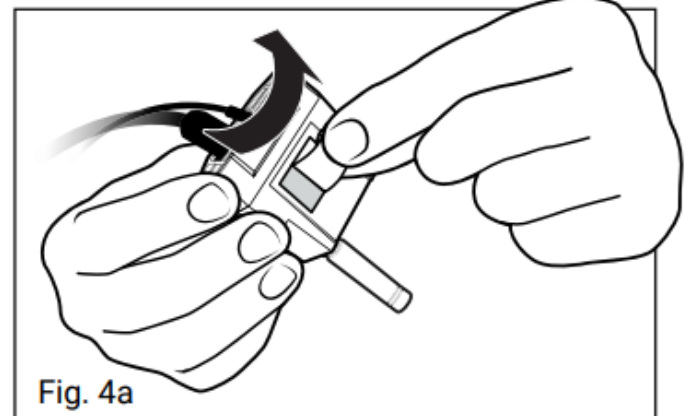
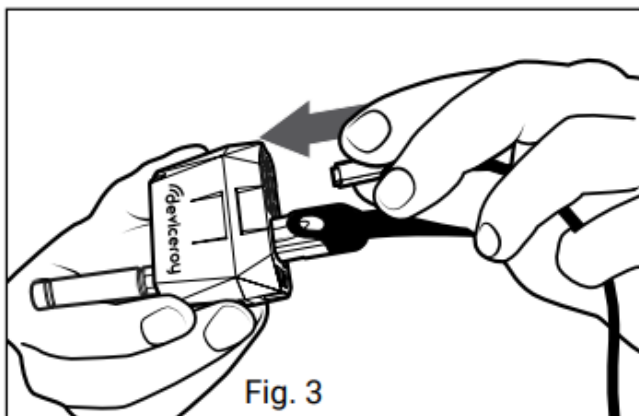
### C Determine an install location.

D Twist to Install the antenna, ensuring that it is hand tightened (**Fig. 1**). **Do not over-tighten**



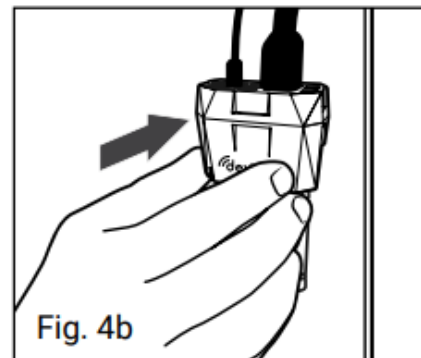
E Connect the data cable to Aria and your device (Fig. 2).

F If you are not powering the device from the data cable, connect the power cable after the data cable is connected. When power is connected, the LED status light will blink on the Aria (Fig. 3).



G Using the adhesive, mount the Aria modem to a clean surface (Fig. 4). (Note: The adhesive is industrial grade and can only be used once, so your chosen location cannot be changed without new adhesive)

H Open the Deviceroy Nexus app, and follow the steps to add a new device (Fig. 5).



## OPTIONAL ACCESSORIES:

Because Aria can connect to multiple interfaces, and to minimize our environmental impact, we require you to specify the cable you need when ordering, rather than providing cables you don't need.

- USB-C to USB-A adapter cable
- USB C to Micro-B USB cable
- Cat 5/5E/6 cable
- Shielded antenna extension cable (different lengths, 1.5/3 ft)
- Antenna mounting kit

## FCC NOTICE

This device complies with Part 15 of the FCC Rules. Operation is subject to the following two conditions:

- This device may not cause harmful interference.
- This device must accept any interference received, including interference that may cause undesired operation.

**Note:** This equipment has been tested and found to comply with the limits for a Class B digital device, pursuant to Part 15 of the FCC Rules. These limits are designed to provide reasonable protection against harmful interference in a residential installation. This equipment should be installed and operated with minimum distance of 20 cm between the radiator and your body. This equipment generates, uses, and can radiate radio frequency energy, and if not installed and used in accordance with instructions, may cause harmful interference to radio communications. However, there is no guarantee that interference will not occur in a particular installation. If this equipment does cause harmful interference to radio or television reception, which can be determined by turning the equipment off and on, the user is encouraged to try to correct the interference by one or more of the following measures:

- Reorient or relocate the receiving antenna.
- Increase the separation between the equipment and receiver.
- Connect the equipment to an outlet on a circuit different from that to which the receiver is connected.
- Consult the dealer or an experienced radio / TV technician for help.

CHANGES OR MODIFICATIONS NOT EXPRESSLY APPROVED BY THE PARTY RESPONSIBLE FOR COMPLIANCE COULD VOID THE USERS' AUTHORITY TO OPERATE THE EQUIPMENT AND MAY VOID ANY ASSOCIATED WARRANTY.

### Industry Canada

This Class B digital apparatus meets all requirements of the Canadian Interference Causing Equipment Regulations.

Operation is subject to the following two conditions:

- This device may not cause harmful interference.
- This device must accept any interference received, including interference that may cause undesired operation.



### DEVICEROY CORPORATION

150 W Commonwealth Ave

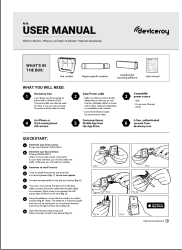
Unit 205

Salt Lake City, UT 84115

Email: [info@deviceroy.com](mailto:info@deviceroy.com)

Phone: 801.708.0053

## Documents / Resources

	<p><a href="#">deviceroy ARIA1 Intelligent and Versatile Modem</a> [pdf] User Manual</p> <p>ARIA1, 2A3KPARIA1, ARIA1 Intelligent and Versatile Modem, ARIA1, Intelligent and Versatile Modem, Versatile Modem, Modem</p>
----------------------------------------------------------------------------------	--------------------------------------------------------------------------------------------------------------------------------------------------------------------------------------------------------------------------

References

-  [Home - Deviceroy](#)