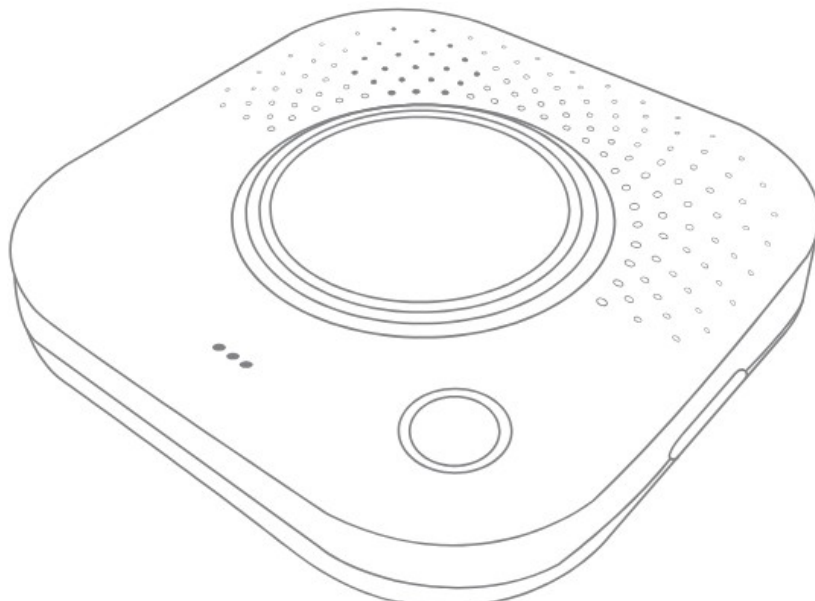




Develco Products Audio Assistant A 2 Way Audio Device Installation Guide

[Home](#) » [Develco Products](#) » Develco Products Audio Assistant A 2 Way Audio Device Installation Guide 



Version 1.2
INSTALLATION MANUAL

Contents

- 1 Audio Assistant A 2 Way Audio Device
- 2 Product description
- 3 Disclaimers
- 4 Precautions
- 5 Mounting
- 6 Getting started
- 7 Resetting
- 8 Modes
- 9 Disposal
- 10 FCC statement
- 11 IC statement
- 12 ISED statement
- 13 CE certification
- 14 Other certifications
- 15 Documents / Resources
 - 15.1 References

Audio Assistant A 2 Way Audio Device



Product description

The Audio Assistant is a 2-way audio device that allows a person in need to get in contact with people outside their home, for instance, an alarm central. It has a built-in panic button and 2 multi-purpose buttons. The Audio Assistant communicates with the gateway via Zigbee (for control) and Bluetooth (for audio).

Disclaimers

CAUTION:

- Shocking hazard! Do not plug into power if the products have any sign of damage or exposure of wires.
- Choking hazard! Keep away from children. Contains small parts.
- Please follow the guidelines thoroughly. The Audio Assistant is a preventive, informing device, not a guarantee or insurance that sufficient warning or protection will be provided, or that no property damage, theft, injury, or any similar situation will take place. Develco Products cannot be held responsible in case any of the abovementioned situations occur.

Precautions

- Do not remove the product label as it contains important information.
- Do not paint the device.

BATTERY

If your Audio Assistant includes a battery backup (Li Pol 3.8 V / 650 mA), please be aware:

- A battery subjected to extremely low air pressure may result in an explosion or the leakage of flammable liquid or gas.
- Leaving a battery in an extremely high temperature surrounding environment can result in an explosion or the leakage of flammable liquid or gas.
- Disposal of a battery into fire or a hot oven, or mechanically crushing or cutting of a battery, can result in an explosion.
- Replacement of a battery with an incorrect type can defeat a safeguard (for example, in the case of some lithium batteries).

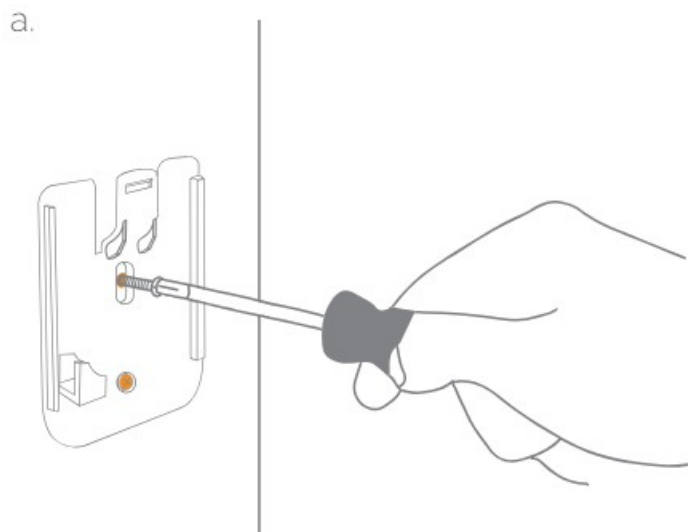
Placement

- Place the Audio Assistant indoors at a temperature between 0-40 degrees °C.
- Place the device, so it is easily accessible to users.
- The Audio Assistant can either be mounted on the wall or placed flat on a table or shelf.

Mounting

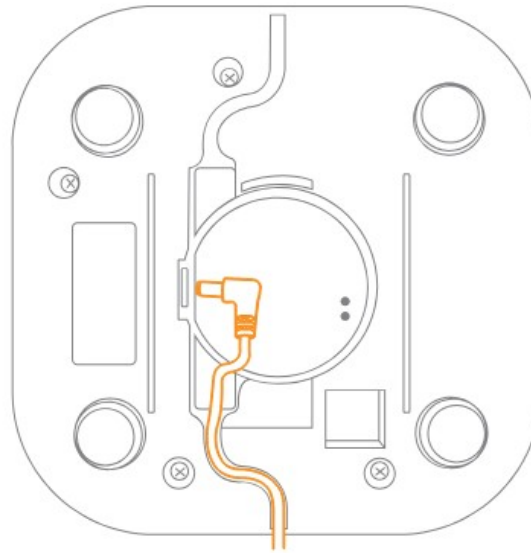
WALL MOUNTING

1. Mount the wall bracket on the wall using the 2 included screws. The Audio Assistant should be installed at a height of 1,5 m.



2. Plug one end of the power cable into the connector at the back of the device.

b.



Power cable

3. Place the device on top of the wall bracket and slide it down until it clicks.

c.



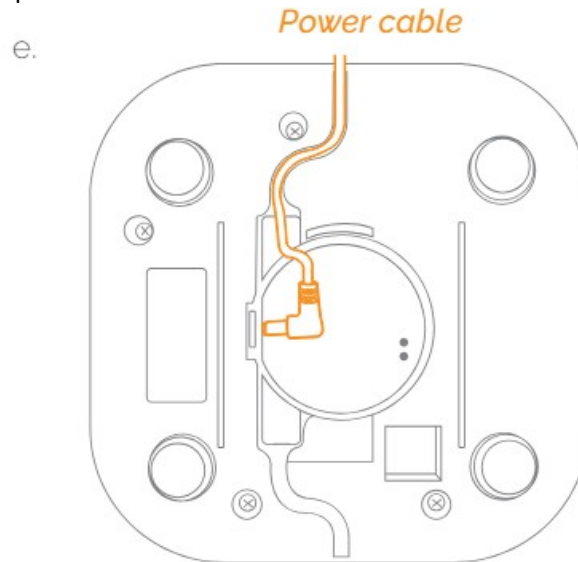
d.



TABLE PLACEMENT

Alternatively, the Audio Assistant can be placed on a table or shelf. In this case, the power cable can be placed in

the cable canal leading out the top or bottom of the device.



Getting started

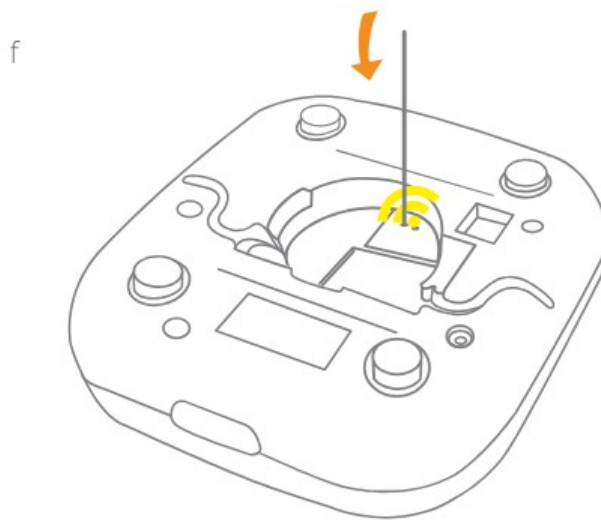
1. Insert the plug of the cable attached to the Audio Assistant into a power socket.
2. When the plug is connected, the Audio Assistant will start searching (up to 15 minutes) for a Zigbee network to join. While the Audio Assistant is searching for a Zigbee network to join, the LED at the bottom of the device flashes yellow.
3. Make sure that the Zigbee network is open for joining devices and will accept the Audio Assistant.
4. When the LED stops flashing yellow, the Audio Assistant has successfully joined the Zigbee network.
5. The LED will then flash blue while the Audio Assistant is connecting to the Bluetooth network. When the LED stops flashing blue, the Audio Assistant has successfully paired and connected to the Bluetooth network.
6. If the scanning has timed out, a short press on the menu button on the back of the device will restart it.

Resetting

Resetting is needed if you want to connect your Audio Assistant to another gateway or if you need to perform a factory reset to avoid abnormal behavior.

STEPS FOR RESETTNG

1. Remove the device from the wall bracket.
2. Connect the device to a power outlet..
3. Press and hold the menu button on the back of the device with a thin pin – e.g. a paper clip.



4. While you are holding the button down, the LED at the bottom of the device first flashes once, then two times in a row, and finally numerous times in a row.
5. Release the button while the LED is flashing numerous times in a row.
6. After you release the button, the LED shows one long flash, and the reset is completed.

Modes

SEARCHING GATEWAY MODE

1. The LED at the bottom of the device flashes yellow until connected to the gateway.
2. Then, the same LED flashes blue until Bluetooth is connected to the gateway.

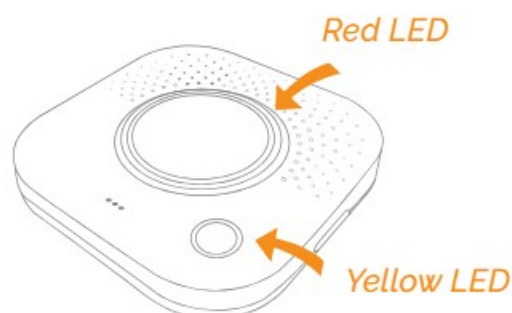
NORMAL OPERATION (MAINS POWERED)

- Idle: no light
- Customizable events & LED patterns on the front when pressing the different buttons

COMMUNICATION ERRORS

Communication errors can occur either between the Audio Assistant and the gateway, or between the gateway and the Alarm Receiving Center.

In case of a communication error, both the red and the yellow LED on the front of the device are blinking slowly at a low illumination level.



Fault finding and cleaning

- In case of a bad or wireless weak signal, change the location of the device. Otherwise you can relocate your gateway or strengthen the signal with a range extender.
- If the search for a gateway has timed out, a short press on the reset button will restart it.

Disposal

Dispose the product properly at the end of its life. This is electronic waste which should be recycled. If it includes a Lithium battery, please dispose of the battery according to your local regulations.

FCC statement

Changes or modifications to the equipment not expressly approved by the party responsible for compliance could void the user's authority to operate the equipment.

NOTE: This equipment has been tested and found to comply with the limits for a Class B digital device, pursuant to Part 15 of the FCC Rules. These limits are designed to provide reasonable protection against harmful interference in a residential installation.

This equipment generates, uses and can radiate radio frequency energy and, if not installed and used in accordance with the instructions, may cause harmful interference to radio communications. However, there is no guarantee that interference will not occur in a particular installation.

If this equipment does cause harmful interference to radio or television reception, which can be determined by turning the equipment off and on, the user is encouraged to try to correct the interference by one or more of the following measures:

- Reorient or relocate the receiving antenna.
- Increase the separation between the equipment and receiver.
- Connect the equipment into an outlet on a circuit different from that to which the receiver is connected.
- Consult the dealer or an experienced radio/ TV technician for help.

This device complies with FCC RF radiation FCC statement exposure limits set forth for an uncontrolled environment. The antenna used for this transmitter must be installed to provide a separation distance of at least 20 cm from all persons and must not be co-located or operating in conjunction with any other antenna or transmitter.

This device complies with part 15 of the FCC Rules. Operation is subject to the following two conditions:

1. This device may not cause harmful interference, and
2. this device must accept any interference received, including interference that may cause undesired operation.

IC statement

This device contains licence-exempt transmitter(s)/receiver(s) that comply with Innovation, Science and Economic Development Canada's licence-exempt RSS(s).

Operation is subject to the following two conditions:

1. This device may not cause interference.
2. This device must accept any interference, including interference that may cause undesired operation of the device.

This equipment complies with FCC/IC RSS-102 radiation exposure limits set forth for an uncontrolled environment. This equipment should be installed and operated with minimum distance 20 cm between the radiator and your body.

ISED statement

CE certification

The CE mark affixed to this product confirms its compliance with the European Directives which apply to the product and, in particular, its compliance with the harmonized standards and specifications.



IN ACCORDANCE WITH THE DIRECTIVES

- Radio Equipment Directive (RED) 2014/53/ EU
- RoHS Directive 2015/863/EU amending 2011/65/EU
- REACH 1907/2006/EU + 2016/1688

Other certifications

Zigbee 3.0 certified

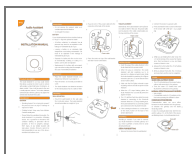


All rights reserved.

Develco Products assumes no responsibility for any errors, which may appear in this manual. Furthermore, Develco Products reserves the right to alter the hardware, software, and/ or specifications detailed herein at any time without notice, and Develco Products does not make any commitment to update the information contained herein. All the trademarks listed herein are owned by their respective owners.

Distributed by Develco Products A/S
Tangen 6
8200 Aarhus
Denmark
Copyright © Develco Products A/S

Documents / Resources



[Develco Products Audio Assistant A 2 Way Audio Device](#) [pdf] Installation Guide
AUABT110, 2AHNM-AUABT110, 2AHNMAUABT110, Audio Assistant A 2 Way Audio Device, A
udio Assistant, A 2 Way Audio Device, 2 Way Audio Device, Audio Device, Device

References

- [User Manual](#)

Manuals+. Privacy Policy

This website is an independent publication and is neither affiliated with nor endorsed by any of the trademark owners. The "Bluetooth®" word mark and logos are registered trademarks owned by Bluetooth SIG, Inc. The "Wi-Fi®" word mark and logos are registered trademarks owned by the Wi-Fi Alliance. Any use of these marks on this website does not imply any affiliation with or endorsement.