



**DB45 DSP-Based
FM Radio
Receiver and
Modulation
Analyzer**



DEVA BROADCAST DB45 DSP Based FM Radio Receiver and Modulation Analyzer User Guide

[Home](#) » [DEVA BROADCAST](#) » DEVA BROADCAST DB45 DSP Based FM Radio Receiver and Modulation Analyzer User Guide 

Contents

- [1 DEVA BROADCAST DB45 DSP-Based FM Radio Receiver and Modulation Analyzer](#)
- [2 Product Information](#)
- [3 Product Usage Instructions](#)
- [4 Frequently Asked Questions](#)
- [5 Connection](#)
- [6 Network Settings](#)
- [7 WEB Interface](#)
- [8 Network Discovery for Windows 7](#)
- [9 WEB Interface Login](#)
- [10 Documents / Resources](#)
 - [10.1 References](#)



DEVA BROADCAST DB45 DSP-Based FM Radio Receiver and Modulation Analyzer



Product Information

Specifications

- **Model:** DB45
- **Type:** DSP-based FM Radio Receiver and Modulation Analyzer
- **Manufacturer:** DEVA Broadcast Limited
- **Power:** 12V / 2A
- **Made in:** Bulgaria

Product Usage Instructions

Step 1: Connection

1. Install the unit in its operation place.
2. Connect the device to the 12V DC network using the provided adapter.
3. Connect the antenna cable to the RF antenna input connector located on the rear panel of the device.
4. Connect DB45 to the TCP/IP network using a direct network cable.
5. Connect the optional GSM modem via the supplied connection cable.

NOTE: Proper placement of the GSM antenna is essential for optimal GSM network coverage.

Step 2: Network Settings

After connecting the network cable, ensure that the LED 'LAN' indicator located on the rear panel is ON or flashing. Default Network Settings are as follows.

- **DHCP:** Enabled
- **IP:** Assigned by DHCP
- **Mask:** Assigned by DHCP
- **Gateway:** Assigned by DHCP
- **DNS:** Assigned by DHCP
- **HTTP Port:** 80

Step 3: WEB Interface

1. Open a new WEB Browser.
2. Enter the device IP address in the Address field and press Enter.
3. A window requiring a username and password will appear. The default values are username: admin and password: pass.

NOTE: If the port is different than the default one (80), it needs to be specified in the address.

Step 4: Network Discovery for Windows 7

1. Open Advanced sharing settings by clicking the Start button, and then click on Control Panel.
2. In the search box, type network, click Network and Sharing Center, and then click Change advanced sharing settings. Select your current network profile.
3. Click Turn on Network Discovery, and then click Save Changes.

Frequently Asked Questions

Q: How can I update the software and firmware of DB45?

A: To update the software and firmware, visit www.devabroadcast.com/downloads for the latest updates and follow the installation instructions provided.

Q: Can I use a different power adapter with DB45?

A: It is recommended to use the provided 12V / 2A power adapter to ensure the proper functionality and performance of DB45.

BEFORE YOU USE THIS PRODUCT

- In order to be able to enjoy all the benefits of owning your new DEVA product, please verify first that the latest software and firmware releases were installed.
- Visit www.devabroadcast.com/downloads for the most recent software and firmware downloads, before the installation.
- DEVA Broadcast Limited is an ISO 9001:2015 / ISO 14001 / ISO 45001 certified company.
- This Quick user guide will make the installation of DB45 – DSP-Based FM Radio Receiver and Modulation Analyzer quick and easy. Applying these principles, you can simplify the process and save yourself extra time and effort.
- For more information about the Safety precautions and the Operating environment recommendations please refer to the User Manual.

Connection

- Install the unit in its operation place;
- Connect the device to the 12V DC network using the provided adapter;
- Connect the antenna cable to the RF antenna input connector located on the rear panel of the device;
- Connect DB45 to the TCP/IP network using a direct network cable;
- Connect the optional GSM modem via the supplied connection cable.
- **NOTE:** Please, locate and select a proper place for the GSM antenna for achieving better GSM network coverage.

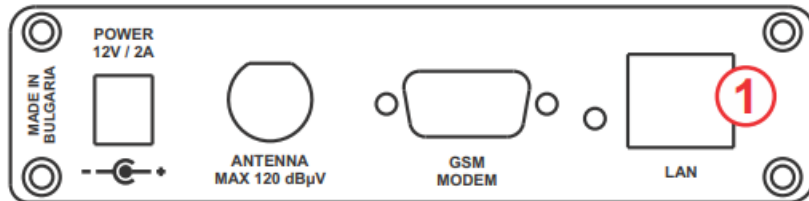
Network Settings

After connecting the network cable the LED 'LAN' indicator (1) located on the rear panel must be ON or flashing.

These are the Default Network Settings:

- **DHCP:** Enabled
- **IP:** Assigned by DHCP
- **Mask:** Assigned by DHCP
- **Gateway:** Assigned by DHCP
- **DNS:** Assigned by DHCP

- **HTTP Port:** 80

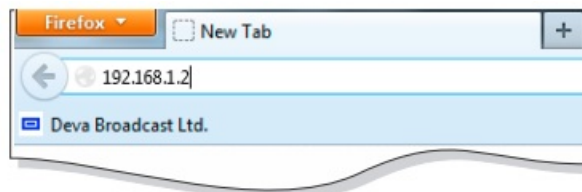


- **NOTE:** DB45 has a DHCP-assigned IP address by default. In order to establish communication, your PC should be connected to the same sub-network as the device. For further information consult with your network administrator.

WEB Interface

DB45 is controlled through a built-in WEB Server and a standard web browser can be used to monitor its status or to make some adjustments. To operate the device you need to know its IP address and follow these steps:

1. Open a new WEB Browser;
2. Enter the device IP address in the Address field and press “Enter”;

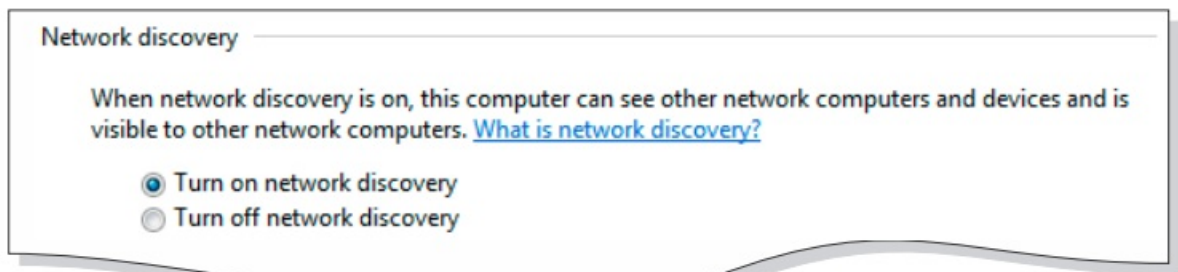


3. A window requiring a username and a password will appear. Default values are username: admin and password: pass (For more information refer to Step 5).
 - In case you are not aware of the IP Address, use the Network discovery feature at Local Networks or refer to Step 4.
 - **NOTE:** If the port is different than the default one (80), it needs to be specified.
 - For example `http://192.168.1.2:9000`

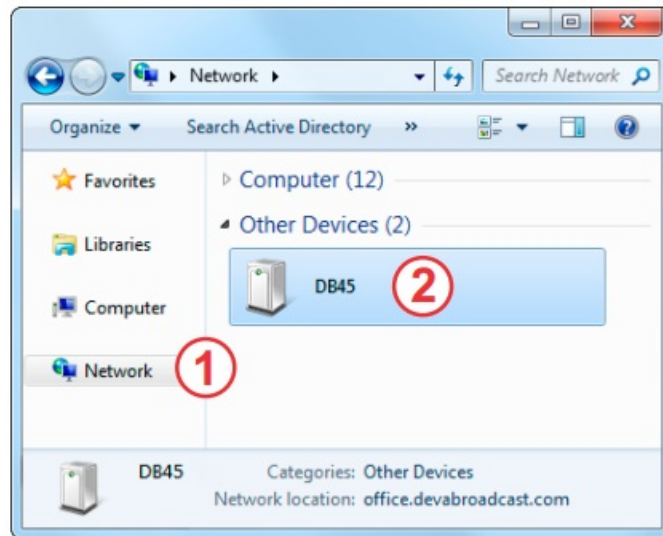
Network Discovery for Windows 7

Network discovery is a network setting that defines whether your computer can see (find) other computers and devices on the network and whether other computers on the network can see your computer. By default, Windows Firewall blocks network discovery but you can enable it.

1. Open Advanced sharing settings by clicking the Start button, and then click on “Control Panel”. In the search box, type “network”, click “Network and Sharing Center”, and then, in the left pane click “Change advanced sharing settings”.
2. Select your current network profile.
3. Click “Turn on network discovery”, and then click “Save changes”. If you’re prompted for an administrator password or confirmation, type the password or provide confirmation.



4. To access the device, open a new Explorer bar and click on Network (1). If you have successfully enabled the network discovery option, the device will be displayed.
- Double click on DB45 (2) will open a new WEB browser window requiring a username and a password. (For more information refer to Step 5)



- **NOTE:** If you have already enabled this function on your computer just open a new Explorer bar and click on Network (1). The device will be displayed. If not, follow the instructions from Step 4.

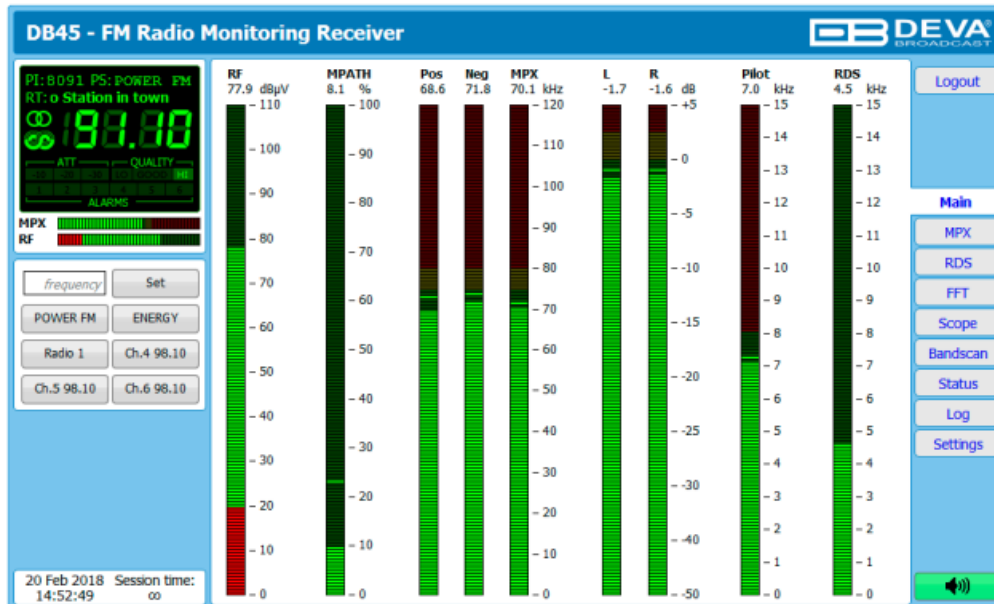
WEB Interface Login

- DB45 provides you with protected access to the device settings.
- The device serves only one user at a time, thus username and password will be requested when login. The default values are admin and pass.



WEB Interface Operation



After successful log in the Control Window will look like this.



The Web Interface is visually divided into three parts:

- **Left** – General Tuner and Channel readings, functional buttons.
- **Middle** – Specific contextual readings;
- **Right** – Navigational Menu;
- **NOTE:** Nevertheless the current menu of the WEB Interface, the left section is constantly displayed.
- This allows immediate tuner interactions.
- Please refer to the User manual for detailed information on how to configure and explore your device.

Documents / Resources

 Quick User Guide DB45 DSP-based FM Radio Receiver and Modulation Analyzer 	DEVA BROADCAST DB45 DSP Based FM Radio Receiver and Modulation Analyzer [pdf] User Guide DB45 DSP Based FM Radio Receiver and Modulation Analyzer, DB45 DSP, Based FM Radio Receiver and Modulation Analyzer, Receiver and Modulation Analyzer, Modulation Analyzer
--	--

References

- [DEVA Broadcast](#)
- [DEVA Broadcast - Downloads](#)
- [User Manual](#)

[Manuals+](#), [Privacy Policy](#)

This website is an independent publication and is neither affiliated with nor endorsed by any of the trademark owners. The "Bluetooth®" word mark and logos are registered trademarks owned by Bluetooth SIG, Inc. The "Wi-Fi®" word mark and logos are registered trademarks owned by the Wi-Fi Alliance. Any use of these marks on this website does not imply any affiliation with or endorsement.