




Desoutter ESP1-HT SLB Controller User Manual

[Home](#) » [Desoutter](#) » Desoutter ESP1-HT SLB Controller User Manual 

Contents

- 1 [Desoutter ESP1-HT SLB Controller](#)
- 2 [Product Usage Instructions](#)
- 3 [DATA](#)
- 4 [ELECTRIC SCHEME](#)
- 5 [MAINS CABLE](#)
- 6 [PARTS DESCRIPTONS](#)
- 7 [STATEMENT OF USE](#)
- 8 [REQUIREMENTS](#)
- 9 [OPERATING INSTRUCTIONS](#)
- 10 [MAINTENANCE INSTRUCTIONS](#)
- 11 [LIMITED WARRANTY](#)
- 12 [DECLARATION OF CONFORMITY](#)
- 13 [Documents / Resources](#)
 - 13.1 [References](#)



Desoutter ESP1-HT SLB Controller



Product Usage Instructions

1. Read and understand all the warnings and instructions provided in the user manual.
2. Keep all the warnings and instructions for future reference.
3. Ensure to follow all the safety precautions mentioned in the safety instructions (part number: 6159930690).
4. Failure to comply with the safety warnings and instructions may result in electric shock, fire, and/or serious injury.
5. Store all the warnings and instructions for later use.
6. For more information and Desoutter contacts, visit www.desouttertools.com.
7. Software and documentation can be accessed at <http://resource-center.desouttertools.com>.

WARNING

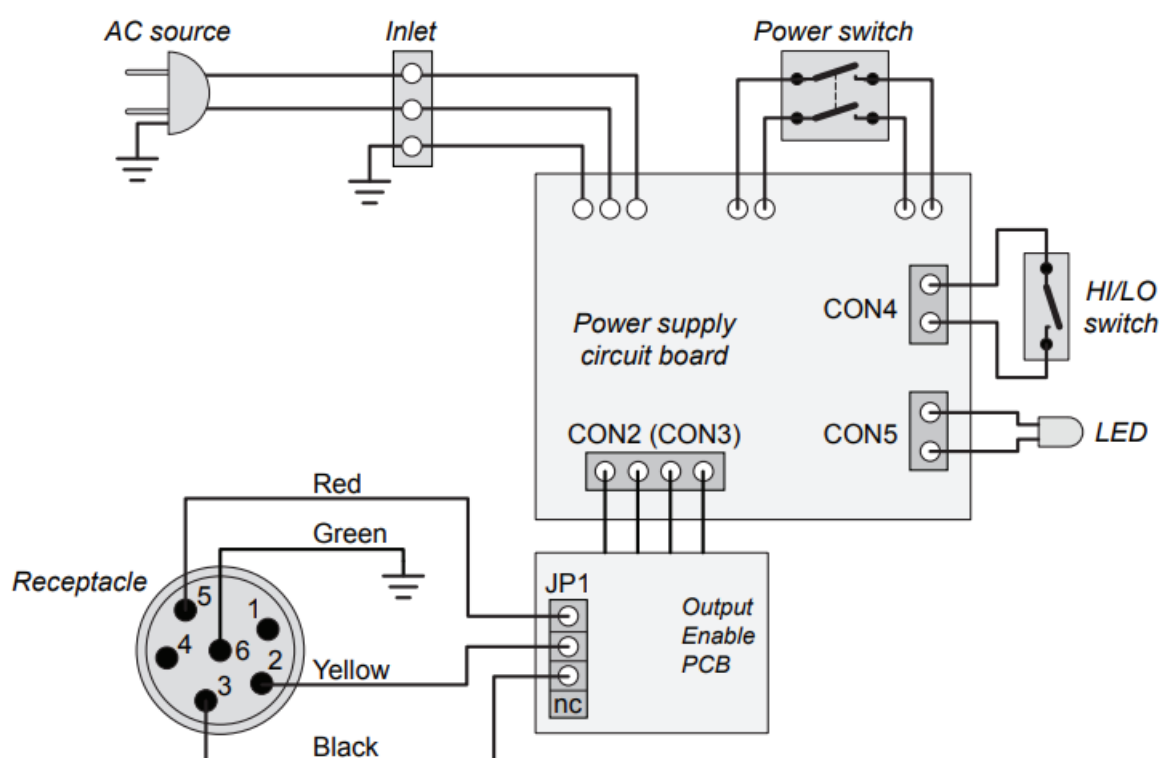
- Read all safety warnings (including the ones of the separately provided safety instructions n° 6159930690) and all instructions. Failure to follow the warnings and instructions may result in electric shock, fire and/or serious injury.
- Save all warnings and instructions for future reference.

DATA

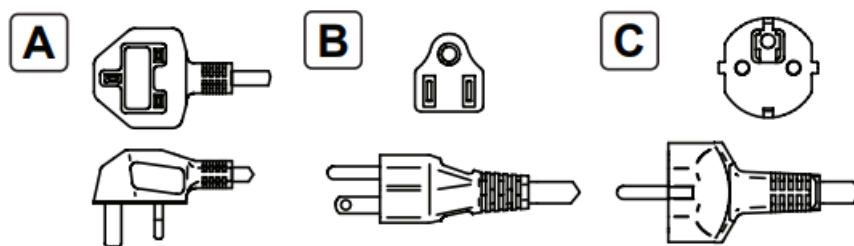
ESP1-HT

Input voltage	110/120VAC 50/60 Hz	
	220/240VAC 50/60 Hz	
Downstream output voltage	Low : 30VDC, 200W	
	Hi : 40VDC, 200W	
Duty cycle	ON = 1 sec. / OFF = 3 sec.	
Outside dimensions – mm (inch)	213 x 131 x 65 (8.4 x 5.2 x 2.6)	
Weight – kg (lb)	1.8 (3.9)	
Suitable model (for one power supply)	SLB030 SLB050	SLBN030 SLBN050

ELECTRIC SCHEME

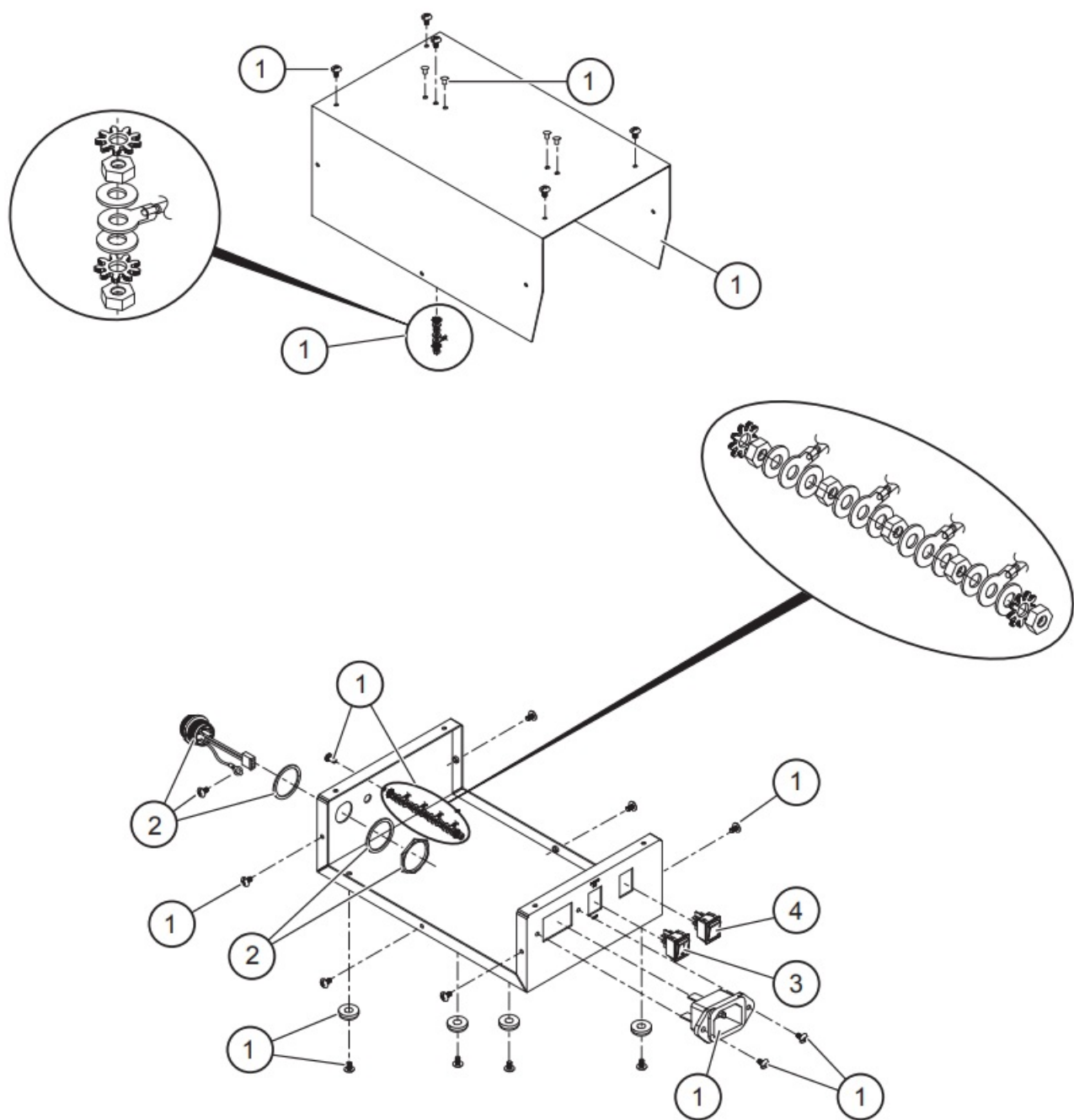


MAINS CABLE



Plug	Description	Part number
A	UK	6159172020
B	USA	6159172030
C	Europe	6159172010

PARTS DESRIPTONS



Item	Description	Part number
1	Housing	6153603800
2	Tool connector	6153603820
3	Power switch	6153603170
4	Hi/Lo switch	6153603180

Original instructions

© Copyright 2022, Ets Georges Renault 44818 St Herblain, FR

All rights reserved. Any unauthorized use or copying of the contents or part thereof is prohibited. This applies in particular to trademarks, model denominations, part numbers and drawings. Use only authorized parts. Any damage or malfunction caused by the use of unauthorised parts is not covered by Warranty or Product Liability.

STATEMENT OF USE

- Product is designed for supply power to Desoutter SLB030/SLB050/SLBN030/SLBN050 tools.
- No other use permitted.
- For professional use only.

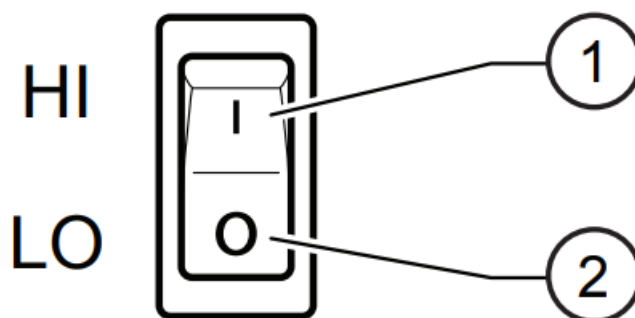
REQUIREMENTS

- This tool requires an input voltage of 220/240VAC or 110/120 VAC at 50/60 Hz; fused at 8 A.

WARNING: This power supply must be earthed.

OPERATING INSTRUCTIONS

- Switch off the power controller.
- Correctly connect the cable to controller and screwdriver.
- Turn the controller on and select speed.



1. **HI:** (High speed) in this position the tool is running at 100% of its rated speed.
2. **LO:** (Low speed) in this position the tool is running at 75% of its rated speed.

Always use the correct Desoutter cable to connect controller to the mains power supply. Do not modify the cable or use it for other purposes. Use only genuine Desoutter replacement parts. Do not drop power supply or treat it roughly. The power controller is not protected against splashing water nor immersion, even temporary. Should the power supply overheat abnormally, interrupt the operation and send immediately the unit to a service centre authorized by Desoutter for repairs.

MAINTENANCE INSTRUCTIONS

- Only experienced and qualified personnel (authorized electricians) are entitled to open and have access to the inside of the power supply.
- If in doubt, return to a Desoutter-authorized service centre (contact your local Desoutter Sales for details).
- Inspect the mains cable for damage daily.
- Replace if damaged.
- When dismantling and assembling, follow normal engineering practices. Unsolder only those wires necessary for component removal. Always note colour code and location of wires for correct assembly. Refer to the illustration and build components into subassemblies. On assembly, ensure earth strap is properly secured.



When disposing of components, lubricants, etc ... ensure that the relevant safety procedures are carried out..

LIMITED WARRANTY

1. This Desoutter product is warranted against defective workmanship or materials, for a maximum period of 12 months following the date of purchase from Desoutter or its agents, provided that its usage is limited to single shift operation throughout that period. If the usage rate exceeds that of single shift operation, the warranty period shall be reduced on a prorata basis.
2. If, during the warranty period, the product appears to be defective in workmanship or materials, it should be returned to Desoutter or its agents, together with a short description of the alleged defect. Desoutter shall, at its sole discretion, arrange to repair or replace free of charge such items as are deemed faulty by reason of defective workmanship or materials.
3. This warranty ceases to apply to products which have been abused, misused or modified, or which have been repaired using other than genuine Desoutter spare parts or by someone other than Desoutter or its authorized service agents.
4. Should Desoutter incur any expense correcting a defect resulting from abuse, misuse, accidental damage or unauthorized modification, they will require that such expense shall be defrayed in full.
5. Desoutter accepts no claim for labour or other expenditure made upon defective products.
6. Any direct, incidental or consequential damages whatsoever arising from any defect are expressly excluded.
7. This warranty is given in lieu of all other warranties, or conditions, expressed or implied, as to the quality, merchantability or fitness for any particular purpose.
8. No one, whether an agent, servant or employee of Desoutter, is authorized to add to or modify the terms of this limited warranty in any way.

Name and content of harmful substances in products

Part Name	Toxic and harmful substances or elements					
	Pb	Hg	Cd	Cr(VI)	PBB	PBDE
Electronics Module	x	o	o	o	o	o
Main board	x	o	o	o	o	o
Drive board	x	o	o	o	o	o
Contact board	x	o	o	o	o	o
Connectors	o	o	o	o	o	o
Housing	o	o	o	o	o	o
Wires	o	o	o	o	o	o
<p>This form is prepared in accordance with the provisions of SJ/T11364</p> <p>○ It means that the content of the toxic and harmful substances in all homogeneous materials of the part is below the limit requirements specified in GB/T 26572.</p> <p>× Indicates that the content of the toxic and hazardous substance in at least one homogeneous material of the component exceeds the limit requirements specified in the GB/T 26572 standard.</p>						

DECLARATION OF CONFORMITY

DECLARATION OF CONFORMITY (UKCA)

We

- Ets Georges Renault
- 38 rue Bobby Sands – BP 10273
- 44818 Saint Herblain – France

Technical file available from EU headquarter

- P.Roussy, R&D Manager
- Ets Georges Renault
- 38 rue Bobby Sands – BP 10273
- 44818 Saint Herblain – France

declare under our sole responsibility that the product(s):

POWER SUPPLY BOX

Machine type(s) :

Model/ P/N

- ESP1-HT /6159326370
- ESP1-HT PLUS /6159327070

Origin of the product: Taiwan

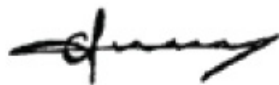
is in conformity with the following UK Regulations :

- to “Electrical Equipment (Safety) Regulations 2016”
- to “Electromagnetic Compatibility Regulations 2016”
- to “The Restriction of the Use of Certain Hazardous Substances in Electrical and Electronic Equipment Regulations 2012”

Designated standard(s) applied:

- EN 55014-1 :2017
- EN 55014-2 :2015
- EN 61000-3-2 :2019
- EN 61000-3-3 :2013 + A1 :2019
- EN 62368:2020

NAME and POSITION of issuer: Pascal ROUSSY (R&D Manager)



Place & date: Saint-Herblain, 03/02/2022

UK Authorized Representative

- Air Compressors & Tools Ltd
- Zodiac – Unit 4 Boundary way
- Hemel Hempstead Industrial Estate
- HP27SJ Hempstead Hertfordshire – UK

Contact: M.Taylor

DECLARATION OF CONFORMITY (CE)

We

- Ets Georges Renault
- 38 rue Bobby Sands BP 10273
- 44818 Saint Herblain- FR

Technical file available from EU headquarter

- Pascal Roussy, R&D Manager
- Ets Georges Renault
- 38 rue Bobby Sands – BP 10273 44818 Saint Herblain – France

declare, under our sole responsibility, that the product(s)

- POWER SUPPLY BOX

Machine type(s)

Model	Part Number	Input voltage V	Power W
ESP1-HT	6159326370	110/120 – 220/240	500
ESP1-HT PLUS	6159327070	110/120 – 220/240	800

Box label: stick here

Origin of the product: Taiwan

is in conformity with the requirements of the council Directives on the approximation of the laws of the Member States relating

- to “Electromagnetic Compatibility” 2014/30/EU (26/02/2014)
- to “Low voltage” 2014/35/EU (26/02/2014)
- to “The Restriction Of the use of certain Hazardous Substances in electrical and electronic equipment” 2011/65/EU (08/06/2011)

applicable harmonized standard(s)

- EN 55014-1 :2017
- EN IEC 61000-3-2 :2019
- EN 62368-1:2014+A11:2017
- EN 55014-2 :2015
- EN 61000-3-3 :2013

NAME and POSITION of issuer


**Pascal ROUSSY
(R&D Manager)**





Place & date: Saint Herblain , 05/01/2021

- Find more information and your Desoutter contacts on: www.desouttertools.com
- Software and documentation available at: <http://resource-center.desouttertools.com>

Documents / Resources

	<p>Desoutter ESP1-HT SLB Controller [pdf] User Manual ESP1-HT SLB Controller, ESP1-HT, SLB Controller, Controller</p>
---	---

References

-  [Technical Documentation for Industrial Tools - Desoutter Industrial Tools](#)
-  [Desoutter Industrial Tools - Industrial Pneumatic Tool for Aeronautics & Automotive](#)

Manuals+,