



[Home](#) » [DESLOC](#) » **DESLOC C110 Smart Fingerprint Deadbolt User Manual** 

Contents [[hide](#)]

- [1 DESLOC C110 Smart Fingerprint Deadbolt](#)
- [2 Product Introduction](#)
- [3 Illustration of Functional Components](#)
- [4 Product Installation Instructions](#)
- [5 Quick Start Guide](#)
- [6 AddAdmin](#)
- [7 Add User](#)
- [8 Lock Settings](#)
- [9 Precautions](#)
- [10 CUSTOMER SERVICE](#)
- [11 Warranty](#)
- [12 Documents / Resources](#)
 - [12.1 References](#)



DESLOC C110 Smart Fingerprint Deadbolt



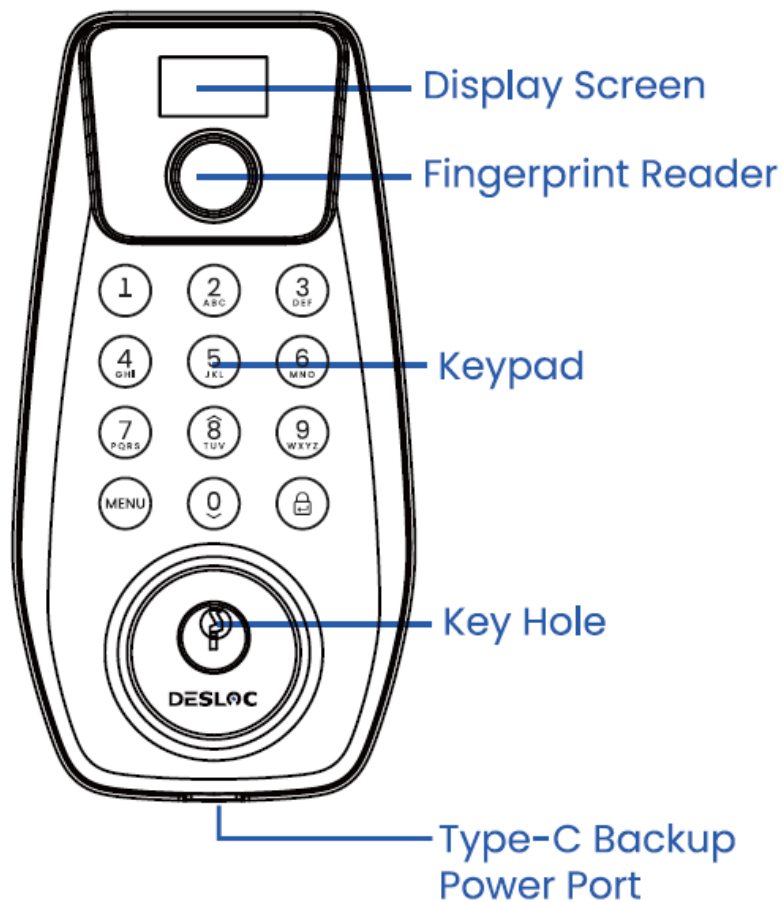
Product Introduction

Technical Parameters

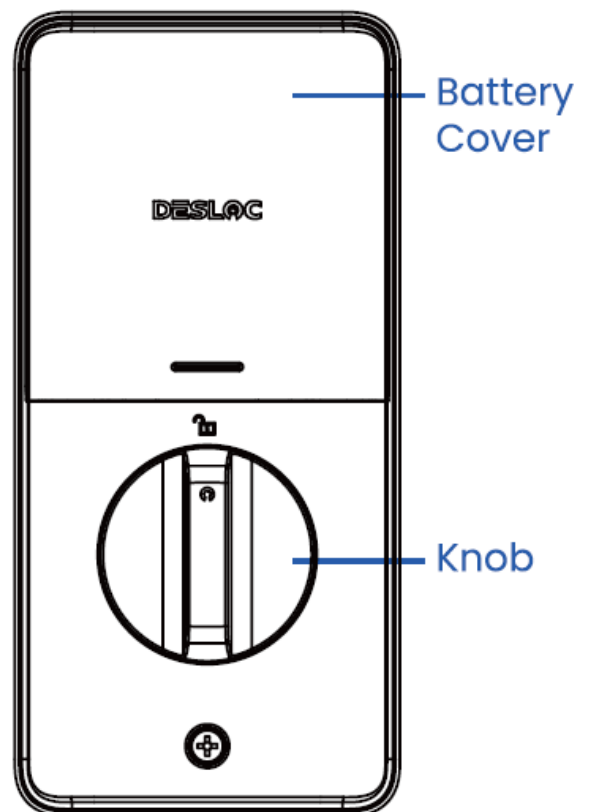
| | |
|---------------------|------------------------------|
| Batteries | 4xAA(Sold Separeately) |
| Working Temperature | -30°C-70°C(Not Condensation) |
| Door Thickness | 35-50mm |
| Material | Aluminum Alloy |
| Unlock Mechanism | Fingerprint/Key/ Pin |
| Pin | 100 Groups |
| Fingerprint | 50 Groups |
| Relative Humidity | <95 % |

Illustration of Functional Components

Exterior Lock:



Interior Lock:



Product Installation Instructions

Installation Video

Scan to Watch the Video



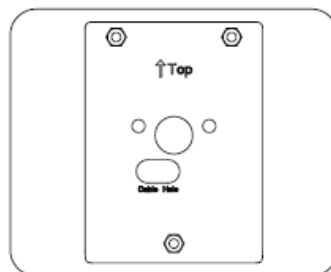
What's included for installation



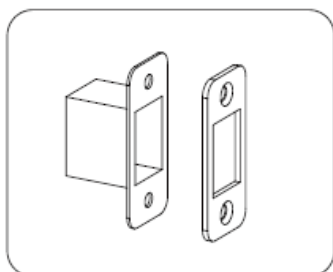
a. Exterior Lock



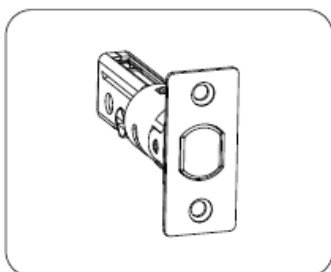
b. Interior Lock



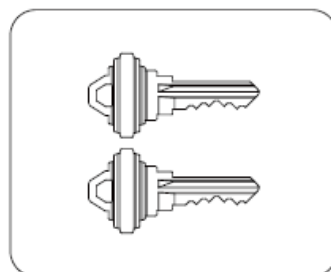
c. Mounting Plate



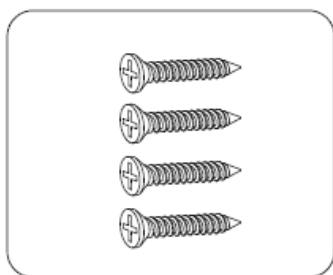
d. Strike Plate



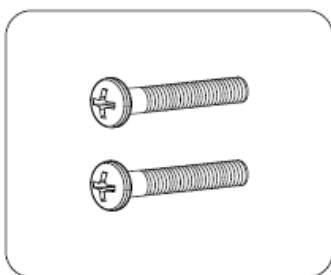
e. Deadbolt



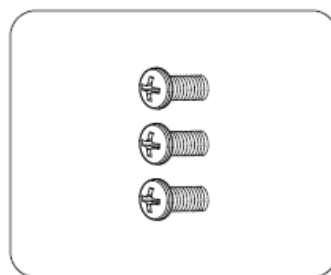
f. Mechanical Key



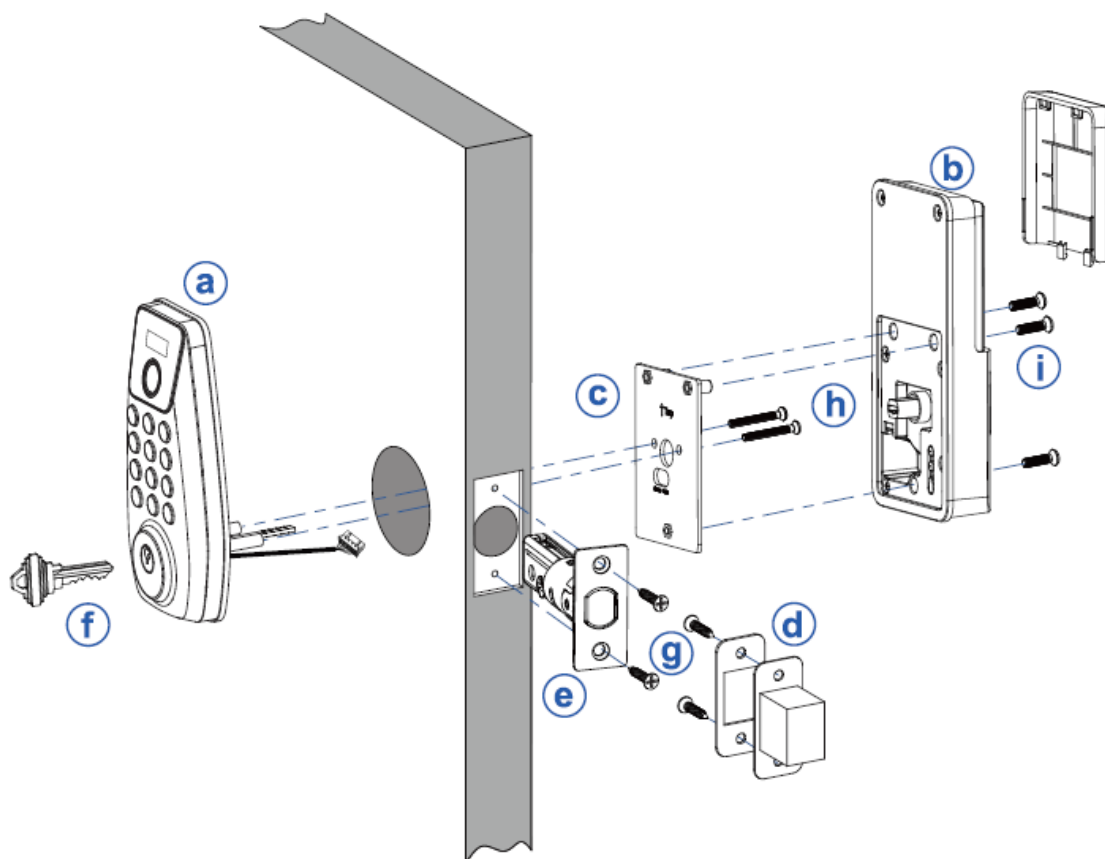
g. Deadbolt/Strike
Plate Screws



h. Mounting
Plate Screws



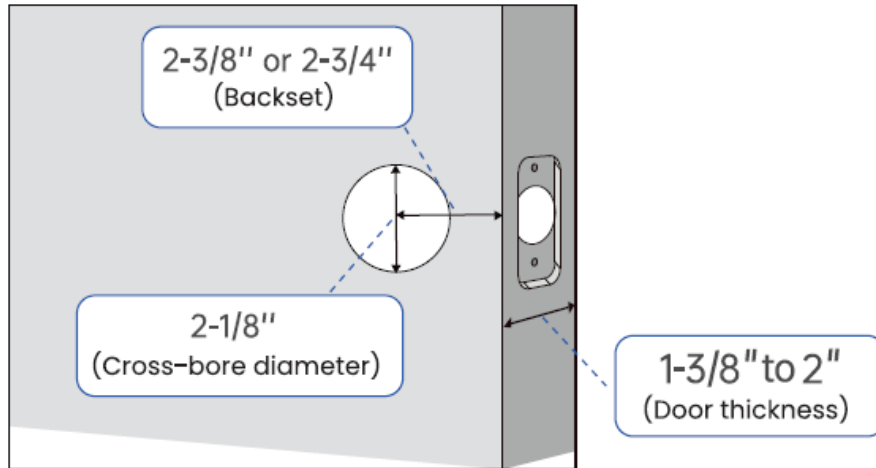
i. Interior Lock
Screws



How to Install the Lock

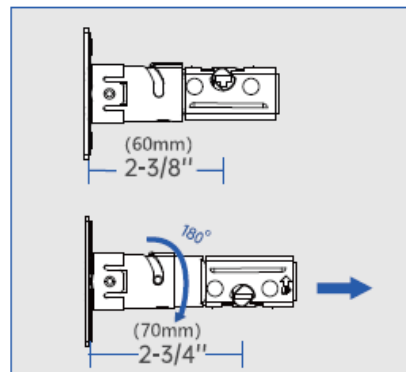
1. Measure the Door Size

- Make sure the door has a thickness of 1-3/8" to 2", a hole diameter of 2-1/8", and a measured backset size of 2- 3/8" or 2-3/4" with the deadbolt.



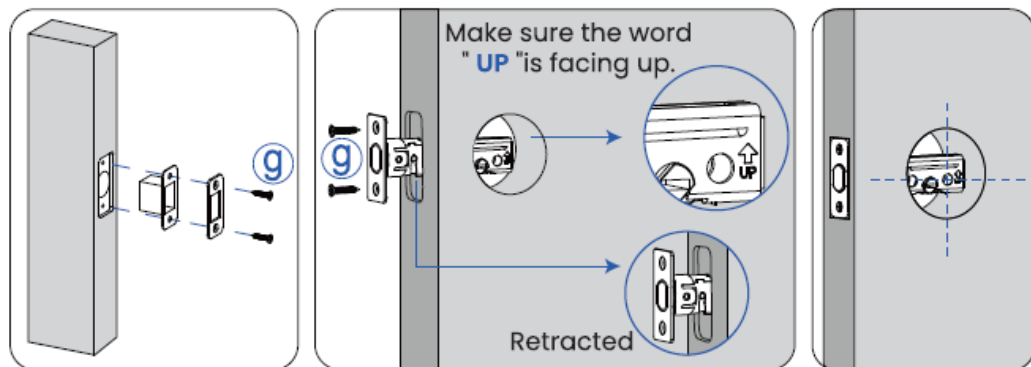
2. Adjust the Length of the Deadbolt

- Check your door to see if the deadbolt requires adjustment.
- If the backset is 70 mm, turn the faceplate 180° to extend the length.



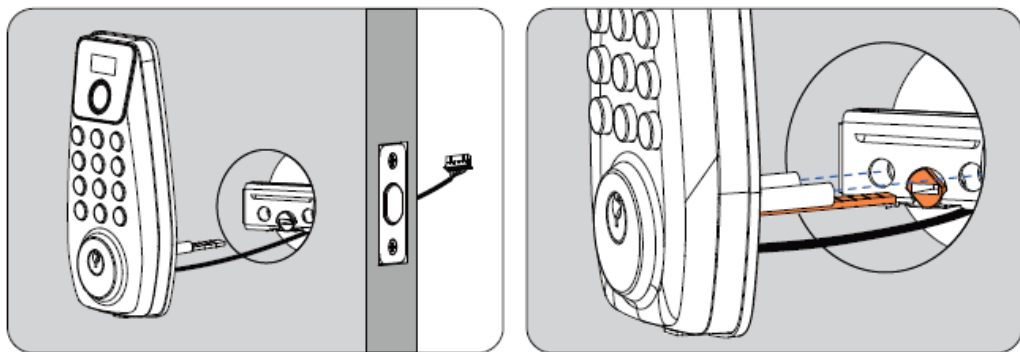
3. Install Deadbolt

- Fix the deadbolt with 2 deadbolt screws **g** and keep it retracted.



4. Install Exterior Lock

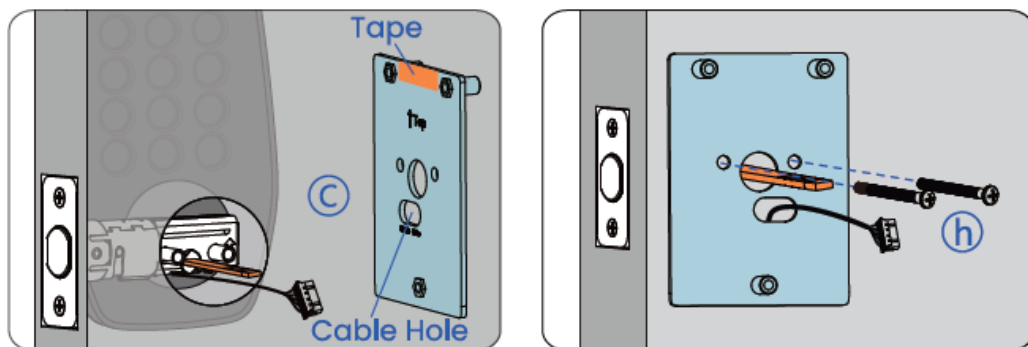
- Route the cable below the deadbolt; the paddle must be in 'horizontal' status.



- **NOTE:** Do not insert the key during the installation.
- **NOTE:** The deadbolt must be in the unlock position, and the paddle must be in 'horizontal' status.

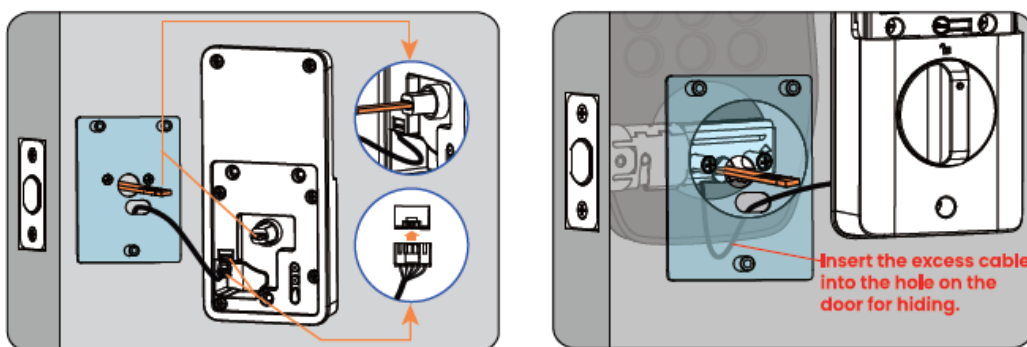
5. Fix the Mounting Plate

- **a.** Peel the tape off the mounting plate and thread the cable through the hole in the mounting plate.
- **b.** Fix the plate with 2 mounting plate screws **h**.



6. Install the Interior Lock

- **a.** Connect the cable securely.
- **b.** Turn the doorknob horizontally and insert the paddle (Do not insert batteries until the lock is fully installed).

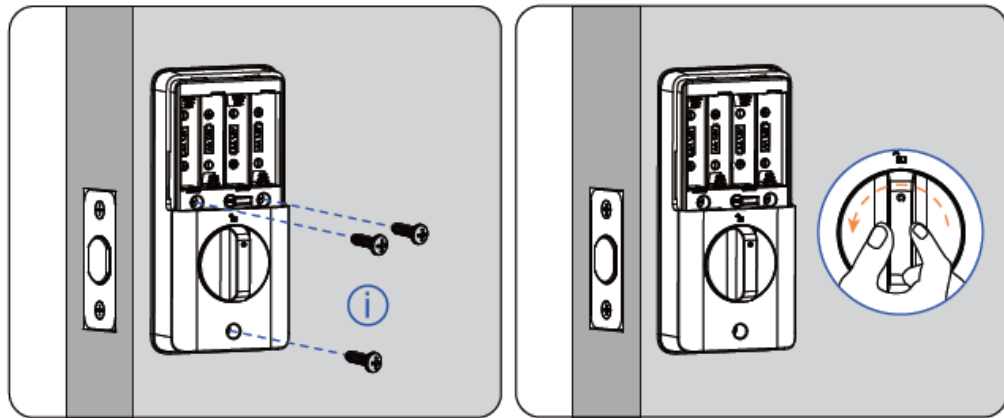


- **NOTE:** When pressing the indoor panel against the door, try to conceal the wires inside the door or place them in the designated wire-housing areas on the indoor panel.

7. Fix the Interior Lock

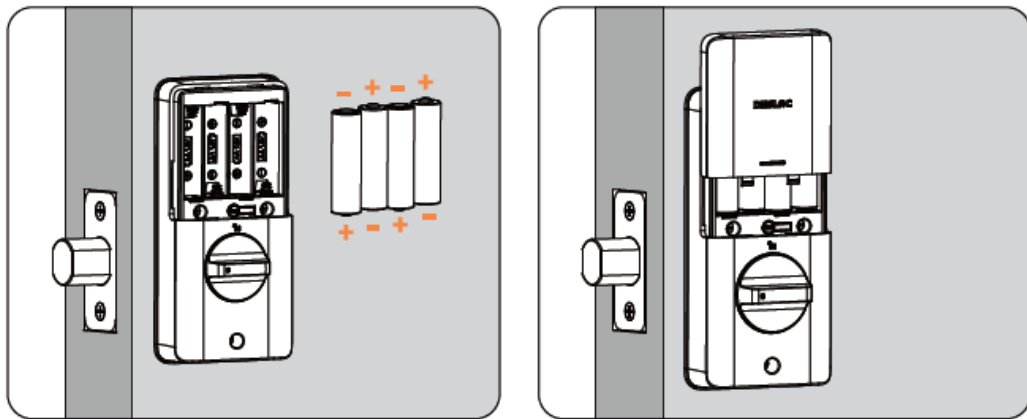
- **a.** Open the battery cover.

- b. Secure the lock with 3 interior lock screws **I**.
- c. Rotate the doorknob to test if the deadbolt can be smoothly extended and retracted.



8. Install Batteries

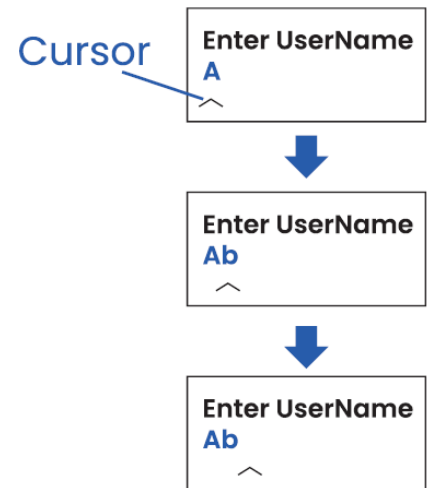
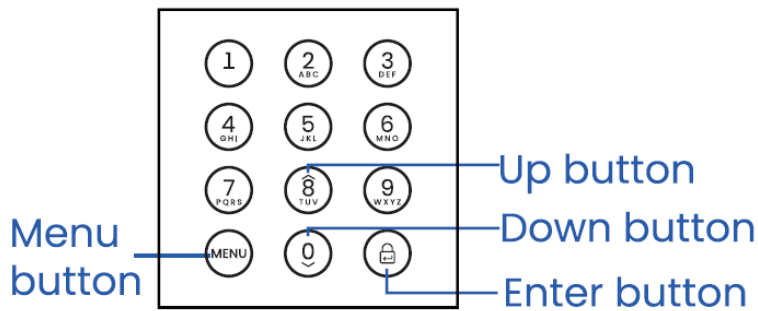
- Place the batteries in position and close the battery cover.






Quick Start Guide

1. Product button Description

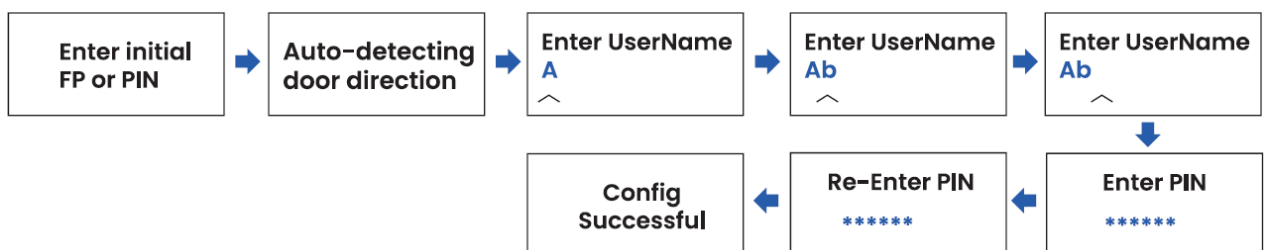
- **[Number button]Number and letter switching function:**
 - For example, press the button [2] once to show “2”, twice to show “A”, three times to show “B”, and four times continuously to “C”;
- **[Enter button]Cursor move function:**
 - Press the [Enter button] to move the cursor back, enter the subsequent text, and double-click the [Enter button] to confirm after the input is completed (as shown in the figure on the right);
- **[Menu button]Backspace function:**
 - Press the [Menu button] to backspace and delete if there is wrong, unwanted text in the input process.



- **[Number button]:** used to enter PIN, numbers, and names
- **[Menu button]:** Enter the settings interface, return, and backspace
- : Enter button, confirm the current operation, and press it to lock.
- : Up button, to scroll the menu item up
- : Down button, to scroll the menu item down

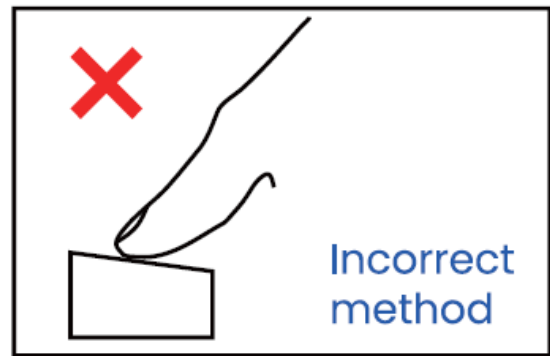
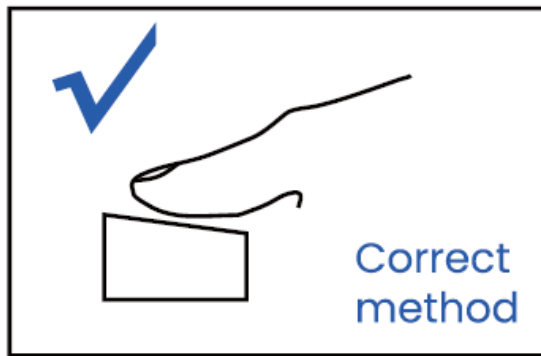
2. Change Initial PIN

1. **Step 1:** Click the [Menu button] > Enter the initial PIN “123456” > Click the [Enter button] to confirm (The lock will automatically detect the door’s opening direction. Please keep the door open and avoid any operations);
2. **Step 2:** Enter the administrator’s name, for example, to enter “Ab”: press the [2] button twice to select “A”> press the [Enter button] to confirm > then press the [2] button 3 times continuously to select “b” > double-click the [Enter button] to confirm;
3. **Step 3:** Enter a new PIN (6-8 digits), and press the [Enter button] to confirm.
4. **Step 4:** Enter and confirm the new PIN again, and press the [Enter button] to confirm, so that the new PIN setting is completed.



- **NOTE:** The initial management PIN is 123456, and add an administrator and change the administrator PIN (new PIN (6-8 digits) can be set) before the first use.

3. Fingerprint Collection



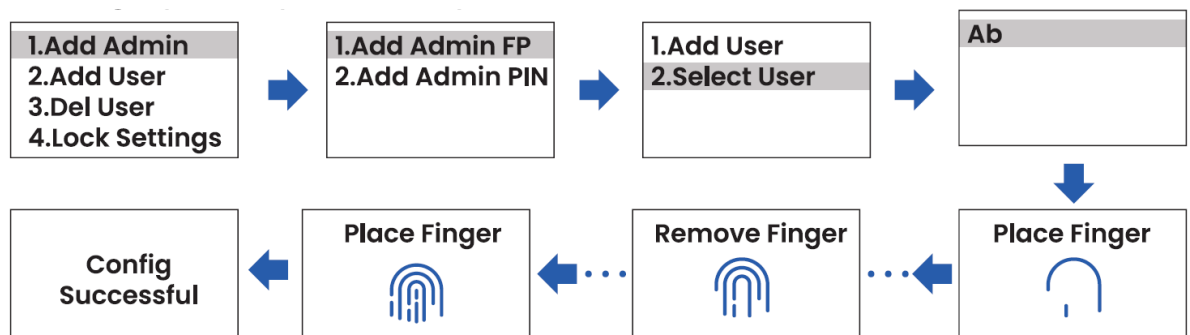
1. **NOTE:** It is recommended that the thumb be preferred as the unlocking finger.
2. For better fingerprint input, please remove debris and water from the fingerprint reader and fingers before input.
3. If failure to enter fingerprint, the screen will display the prompt “Config fail” and automatically return to the home page of the menu, and the fingerprint shall be re-entered according to the steps shown in the figure.
4. It is recommended not to use the same finger for both the administrator’s fingerprint and the user’s fingerprint.

AddAdmin

1. Add Admin FP

- **a. Add the fingerprint of an existing administrator**

1. **Step 1:** Click the [Menu button] > select “Add Admin”> “Add Admin FP”> “Select User”.
2. **Step 2:** Select an existing administrator; for example, select “Ab”, and press the [Enter button] to confirm.
3. **Step 3:** Hold the fingerprint you want to enter on the “Fingerprint Reader”, short-press it and then release, and repeat this operation 6 times until the “Config Successful” is prompted on the screen, so that the fingerprint input is completed.

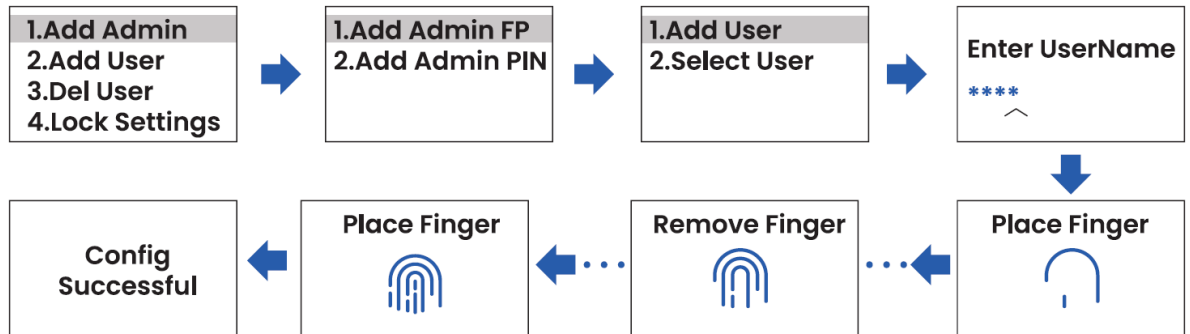


- **b. Add the fingerprint of a new administrator**

1. **Step 1:** Click the [Menu button] > select “Add Admin”> “Add Admin FP” “Add

User”.

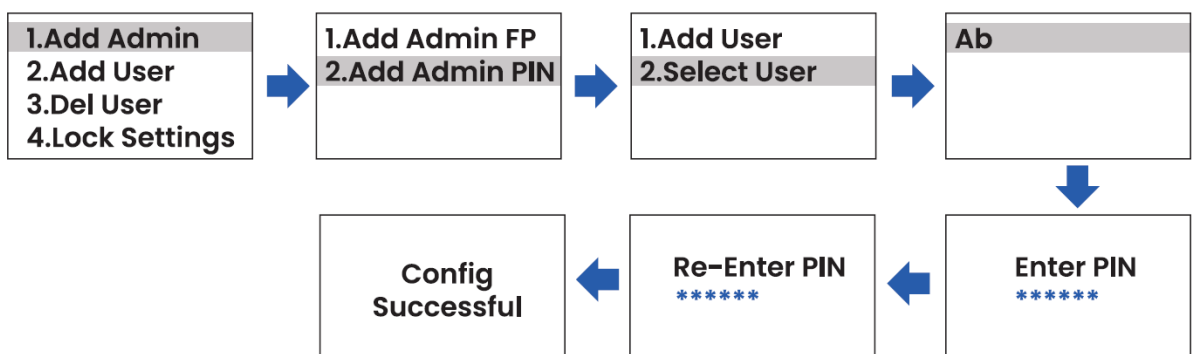
2. **Step 2:** Enter the name of the new administrator and press the [Enter] key to confirm.
3. **Step 3:** Hold the fingerprint you want to enter on the “Fingerprint Reader”, short-press it and then release, and repeat this operation 6 times until the “Config Successful” is prompted on the screen, so that the fingerprint input is completed.



2. Add Admin PIN

- a. Add the PIN code of the existing administrator

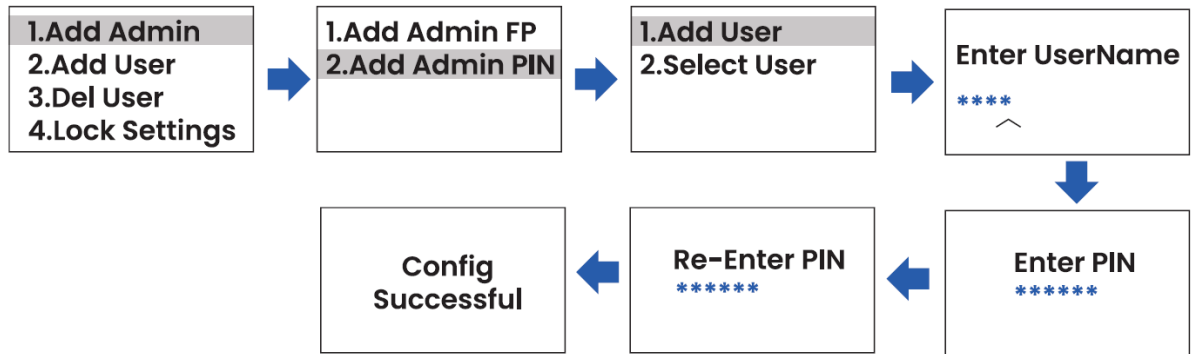
1. **Step 1:** Click the [Menu button] > select “Add Admin”>”Add Admin PIN”> “Select User”.
2. **Step 2:** Select an existing administrator; for example, select “Ab”, and press the [Enter] key to confirm.
3. **Step 3:** Enter a new PIN (6-8 digits), and press the [Enter button] to confirm.
4. **Step 4:** Enter and confirm the new PIN again, and press the [Enter button] to confirm, so that the new PIN setting is completed.



- b. Add the PIN code of the new administrator

1. **Step 1:** Click the [Menu button] > select “Add Admin” >”Add Admin PIN”> “Select User”.
2. **Step 2:** Select the name of the new administrator, and press the [Enter] key to confirm.
3. **Step 3:** Enter a new PIN (6-8 digits), and press the [Enter button] to confirm.

4. **Step 4:** Enter and confirm the new PIN again, and press the [Enter button] to confirm, so that the new PIN setting is completed.

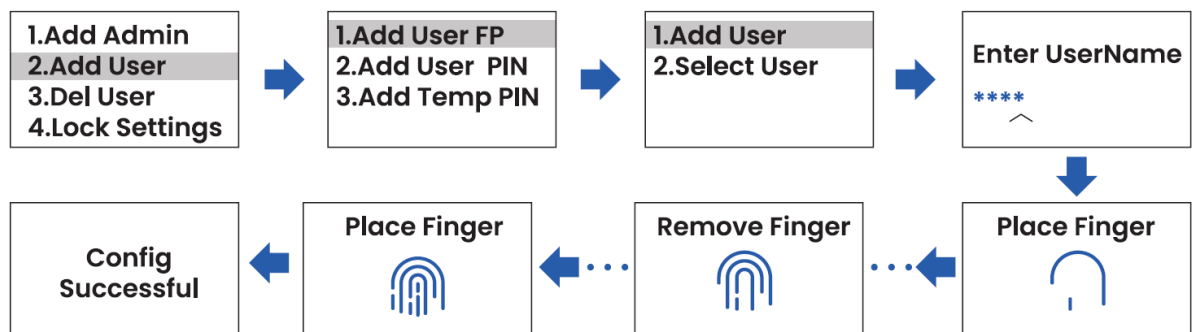


Add User

1. Add User FP

- a. Add the fingerprint of the new user

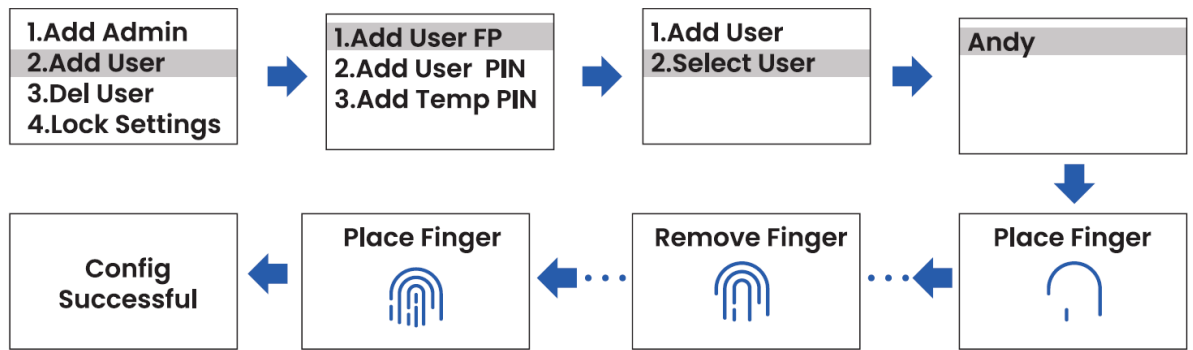
1. **Step 1:** Click the [Menu button] > select “Add User”> “Add User FP”> “Add User”.
2. **Step 2:** Select the name of the new user, and press the [Enter button] to confirm.
3. **Step 3:** Hold the fingerprint you want to enter on the “Fingerprint Reader”, short-press it and then release, and repeat this operation 6 times until the “Config Successful” is prompted on the screen, so that the fingerprint input is completed.



- b. Add the fingerprint of the existing user

1. **Step 1:** Click the [Menu button] > select “Add User”> “Add User FP”> “Add User”.
2. **Step 2:** Select the name of the existing user, and press the [Enter button] to confirm.
3. **Step 3:** Hold the fingerprint you want to enter on the “Fingerprint Reader”, short-press it and then release, and repeat this operation 6 times until the “Config Successful” is prompted on the screen, so that the fingerprint input is

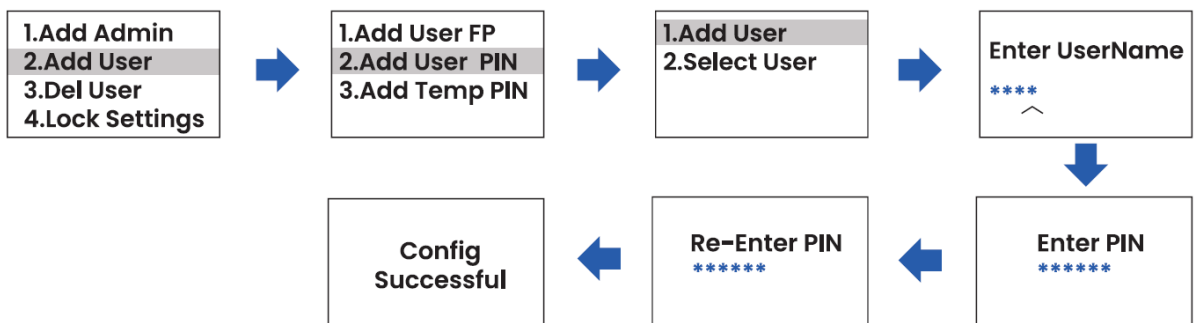
completed.



2. Add User PIN

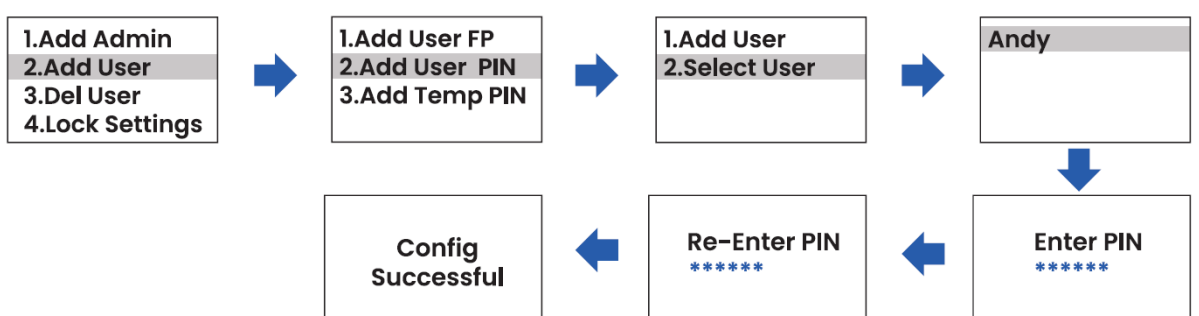
• a. Add the PIN code of a new user name

1. **Step 1:** Click the [Menu button] > select “Add User”>”Add User PIN”>”Add User”;
2. **Step 2:** Enter the name of the new user, and press the [Enter button to confirm.
3. **Step 3:** Enter a new PIN (6-8 digits), and press the [Enter button] to confirm;
4. **Step 4:** Enter and confirm the new PIN again, and press the [Enter button] to confirm, so that the new PIN setting is completed.



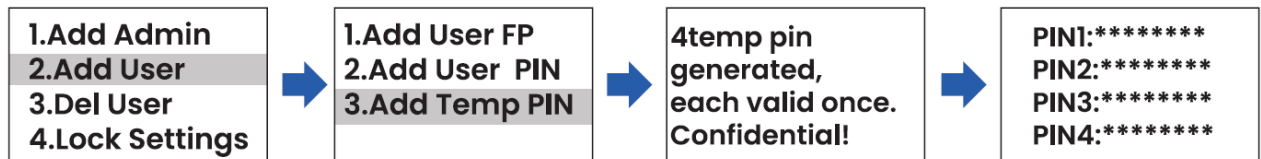
• b. Add the PIN code of the existing user

1. **Step 1:** Click the [Menu button] > select “Add User”>”Add User PIN”> “Add User”.
2. **Step 2:** Select the existing user, such as “Andy”, and press the [Enter] key to confirm.
3. **Step 3:** Enter a new PIN (6-8 digits), and press the [Enter button] to confirm.
4. **Step 4:** Enter and confirm the new PIN again, and press the [Enter button]to confirm, so that the new PIN setting is completed.



3. Add Temp PIN

- **Step 1:** Click the [Menu button] > select “Add User”>”Add Temp PIN”;
- **Step 2:** Press the [Enter button] to confirm and get 4 sets of temporary PINs (they can only be used once, and will be invalid after use).



- **NOTE:** The temporary PIN screen works only for 30s, and please take a photo with your mobile phone for recording; as the screen flashes quickly, a few more photos are recommended.

Del User

1. User Info

- **Used to query the number of users and of unlock modes**
- **a. User Count:** Click the [Menu button] > select “Del User”>”User Info”> “User Count” to view the number of users entered.



- **b. Key:** Click the [Menu button] > select “Del User”>”User Info”> “Key” to view the number of unlockable fingerprints, regular PIN, and temporary PIN.



2. Del User

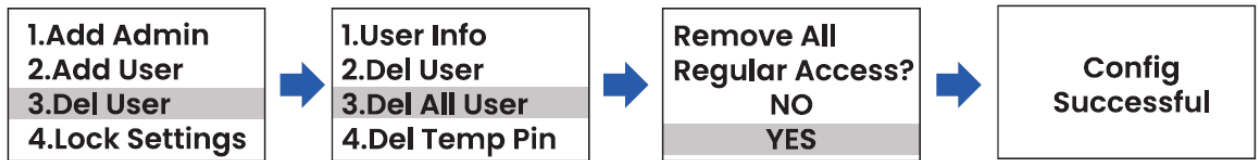
- To delete a single user, administrators and ordinary users are unable to delete the primary administrator.
- Click the [Menu button] > select “Del User” > “Del User”> select the user name to be deleted, such as “Andy”> click the [Enter button] to delete all the information of the user.



3. Del All User

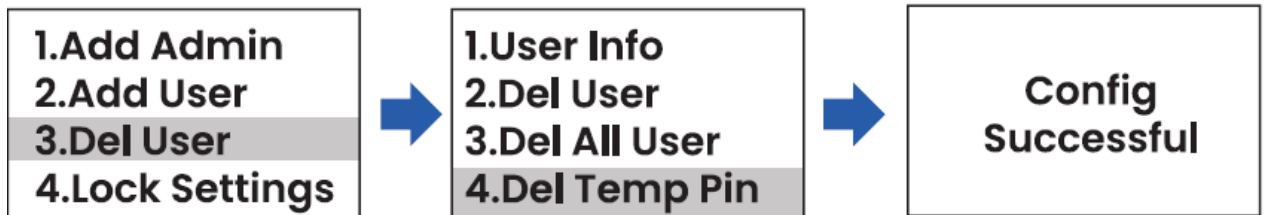
- **Delete all regular users**

- Click the [Menu button] > select “Del User”> “Del All User”> ”VES”> click the [Enter button] to delete all users’ information.



4. Del Temp Pin

- Click the [Menu button] > select “Del User” > “Del Temp PIN”>click the [Enter button] to delete the temporary PIN.

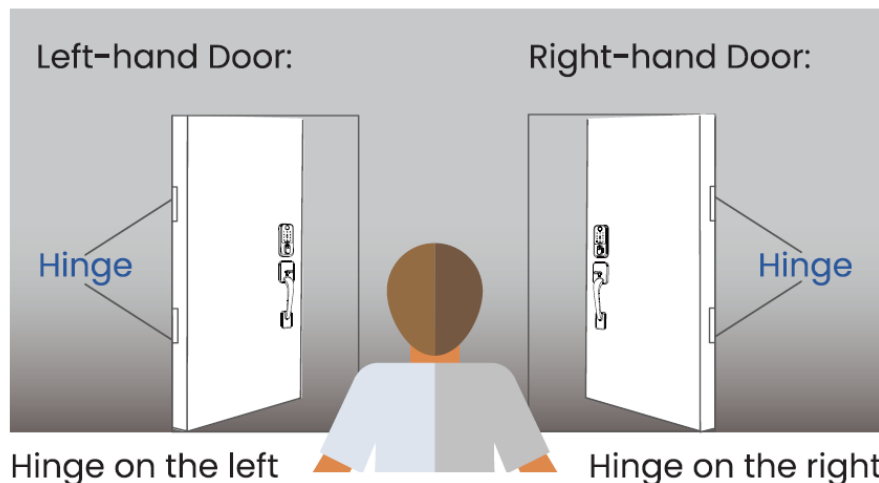
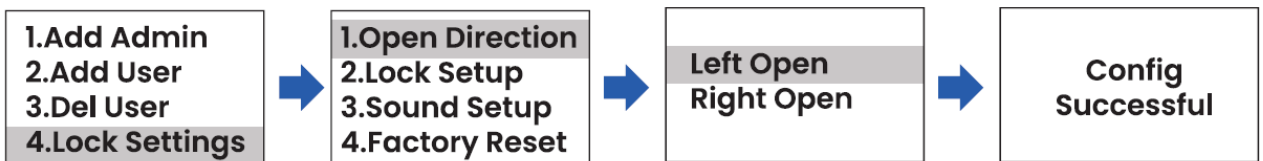


- NOTE:** If the PIN has been issued, but it is not used, and you do not want to use it for others, please delete all (4 sets) of temporary PINs or regenerate 4 sets of temporary PIN.

Lock Settings

1. Open Direction

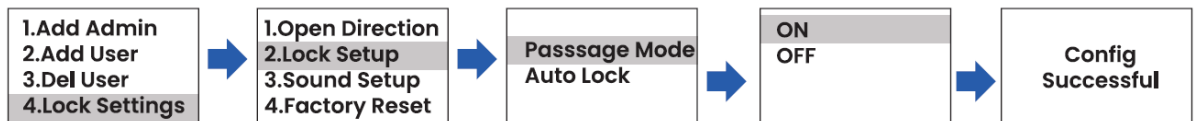
- Click the [Menu button] > select ‘lock Settings’>”Open Direction”> select “Left Open” or “Right Open”, and click the [Enter button] and select the required door opening direction.



2. Lock Setup

- a. Passage Mode**

- Step 1:** Click the [Menu button] > select 'lock Settings"> 'lock Setup"> "Passage Mode";
- Step 2:** Select ON or OFF as required, and click the [Enter button] to confirm.

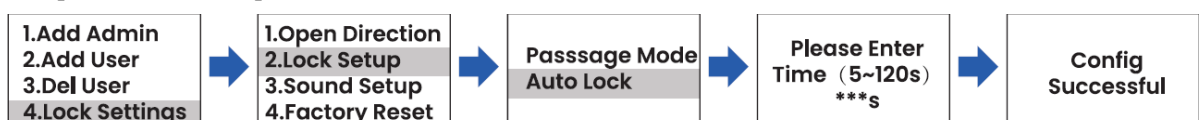


• NOTE

- **Function Definition:** With this function enabled, the door lock will be kept non-auto-locking.
- **Quick enable mode:** Resident users can enter the "5" through the keyboard to enable the "Passage Mode" within 2 seconds after unlocking the door lock with their fingerprint or PIN. After this, Mode is enabled and the door lock is in the Sleep state, the screen will light and display the "Passage Mode".
- **Exit method:** Users can enter the [Menu button] and set the "Passage Mode" to "OFF" or enter "5" through the keyboard within 2 seconds after unlocking the door lock with their fingerprint or PIN to exit this mode.

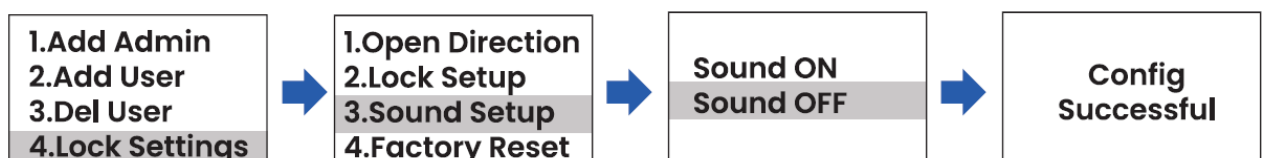
• b. Auto Lock

- Step 1:** Click the [Menu button] > select "Lock Settings"> "Lock Setup"> "Auto Lock";
- Step 2:** Click the [Enter button] to select, enter the period during which the lock is automatically closed (the period time can be set for 5-120s), and click the [Enter button] to confirm.



3. Sound Setup

- Click the [Menu button]> select "Lock Settings"> "Sound Setup"> "Sound OFF", and click the [Enter button] to select the Sound OFF.

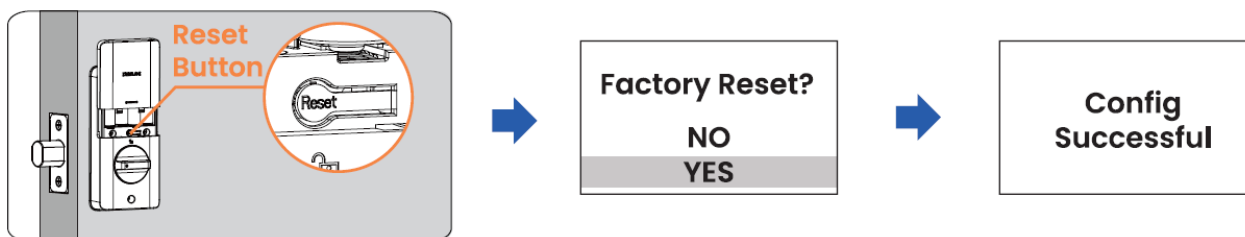


4. Factory Reset

- Method 1:** Click the [Menu button]> select "Lock Settings"> "Factory Reset"> "YES", and click the [Enter button] to confirm.



2. **Method 2:** Lock the battery cover after sliding up, press and hold the Reset button> select ‘YES” to the front lock>click the [Enter button] to confirm.



• **NOTE:**

1. After reset, the lock will be restored to its factory default settings, reverting the ‘ Master PIN code to 123456 and erasing all User PIN codes and User fingerprints;
2. After the factory settings are restored, please change the initial administrator PIN immediately; otherwise, the motor will not work.
3. After the factory settings are restored, when the battery is reinstalled or the initial PIN is changed, the lock will automatically adapt to the door opening direction.

Precautions

1. Product Installation Instructions




| Event | Description |
|-------------------------------|--|
| Lock installation state | The deadbolt must be in the unlock position, and the paddle must be in ‘horizontal’ status. |
| Door lock direction selection | After installation and power on, pressing the menu key and entering the initial PIN, the lock will automatically adapt the door opening direction. |

2. Function Description

| Event | Description |
|-------|-------------|
|-------|-------------|

| | |
|--------------------|---|
| Emergency charging | When the product does not work due to a low battery, the external mobile power supply can be connected for emergency use. |
| Scramble PIN | Add any digit arbitrarily before and after the real PIN, with a 16-digit scramble PIN function. |
| Number of users | Up to 90 regular users can be set, and up to 10 administrators can be set. |
| Number of buttons | A maximum of 50 fingerprints can be entered (up to 10 fingerprints can be entered for a single user), and a maximum of 100 sets of PIN can be entered. |
| Duplicate PIN | The including and included relations of the PIN belong to the PIN that exists. For example, if the existing PIN is "147258", and the new PIN is a duplicate if it is set to "14725836"; or the existing PIN is "14725836", and the new PIN is a duplicate PIN if it is set to "147258". |

3. Warning icon

| Warning icon | State description |
|---|--|
| Failed Check deadbolt | Indicate that the lock is not properly closed or opened. Please check the lock status or battery level. |
|  Low Battery Replace | Level 1 low battery alarm, please replace the battery immediately. |
|  Low Battery Inoperable | Level 2 low battery alarm; be sure to replace batteries. (Tips: When the power runs out, the lock can be open with a mechanical lock or by turning on the emergency power.) |
|  Passage Mode | Passage mode is the ON mode. |


CUSTOMER SERVICE

- www.desloc.com
- +18885726136
- support@desloc.com

Warranty

- 12-month warranty

Documents / Resources

| | |
|---|--|
|  | DESLOC C110 Smart Fingerprint Deadbolt [pdf] User Manual 160714470, C110 Smart Fingerprint Deadbolt, C110, Smart Fingerprint D eadbolt, Fingerprint Deadbolt, Deadbolt |
|---|--|

References

- [User Manual](#)

DESLOC

160714470, C110, C110 Smart Fingerprint Deadbolt, Deadbolt, DESLOC, Fingerprint Deadbolt, Smart Fingerprint Deadbolt

Leave a comment

Your email address will not be published. Required fields are marked *

Comment *

Name

Email

Website

☐ Save my name, email, and website in this browser for the next time I comment.

Post Comment

Search:

Search

[Manuals+](#) | [Upload](#) | [Deep Search](#) | [Privacy Policy](#) | [@manuals.plus](#) | [YouTube](#)

This website is an independent publication and is neither affiliated with nor endorsed by any of the trademark owners. The "Bluetooth®" word mark and logos are registered trademarks owned by Bluetooth SIG, Inc. The "Wi-Fi®" word mark and logos are registered trademarks owned by the Wi-Fi Alliance. Any use of these marks on this website does not imply any affiliation with or endorsement.