



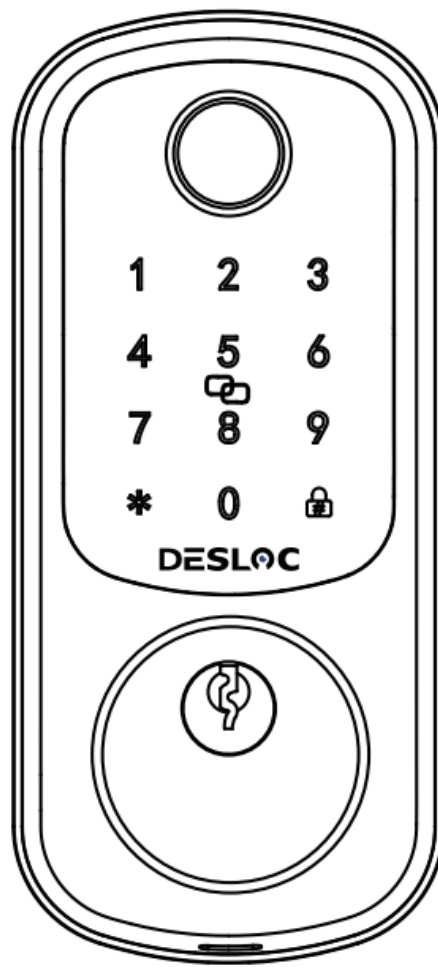
[Home](#) » [DESLOC](#) » **DESLOC B200 Smart Fingerprint Deadbolt User Manual** 

Contents [[hide](#)]

- [1 DESLOC B200 Smart Fingerprint Deadbolt](#)
- [2 Product Details](#)
- [3 What's included for installation](#)
- [4 Product Details](#)
- [5 How to Install the Lock](#)
- [6 How to use it by APP](#)
- [7 How to use it via App](#)
- [8 How to pair Gateway, Alexa](#)
- [9 How to program using the keypad](#)
- [10 FCC Caution](#)
- [11 FAQ](#)
- [12 Documents / Resources](#)
 - [12.1 References](#)

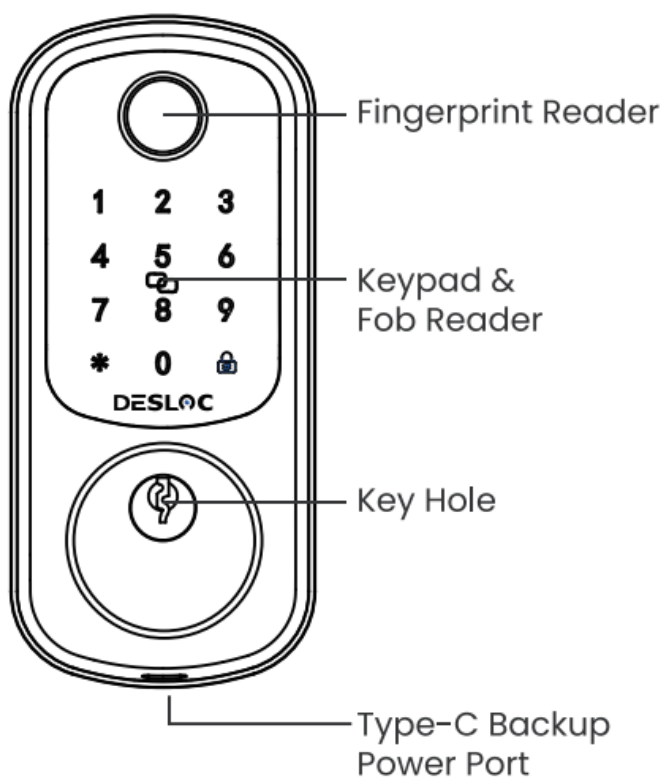


DESLOC B200 Smart Fingerprint Deadbolt

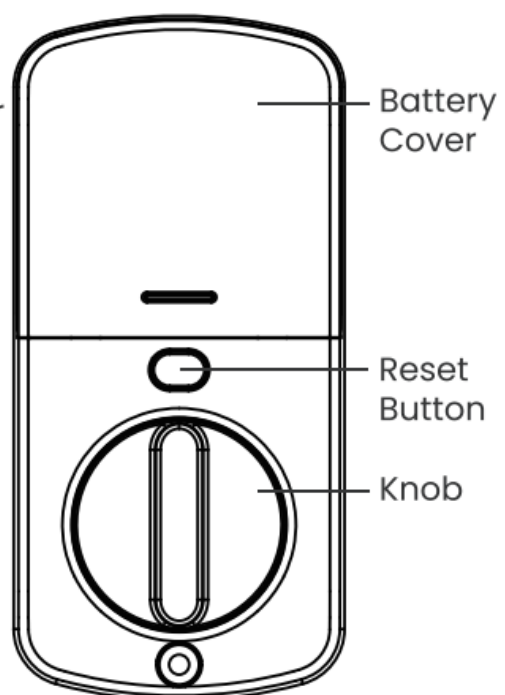


Product Details

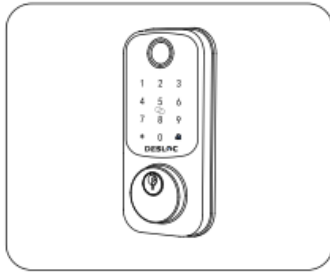
Exterior lock:



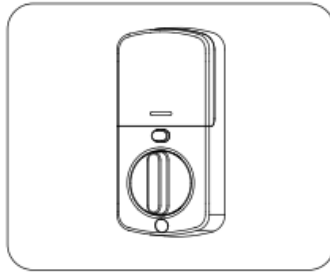
Interior lock:



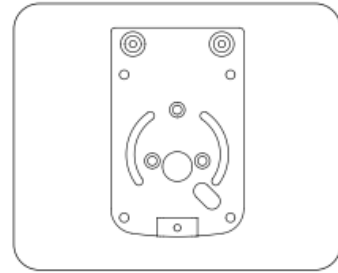
What's included for installation



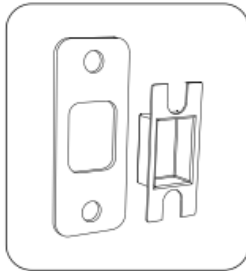
a.Exterior Lock



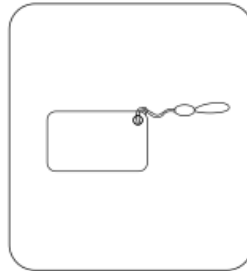
b.Interior lock



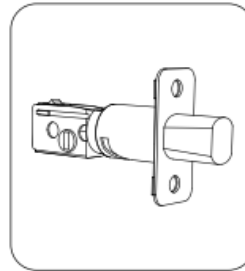
c.Mounting Plate



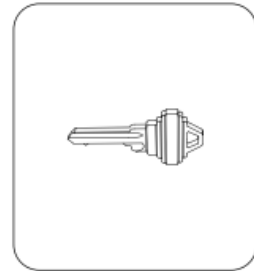
d.Strike Plate



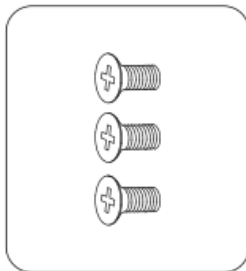
e.IC Card



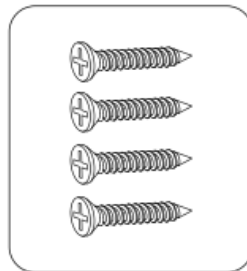
f. Deadbolt



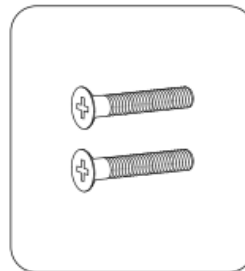
g. Mechanical Key



h. Interior Lock
Screws



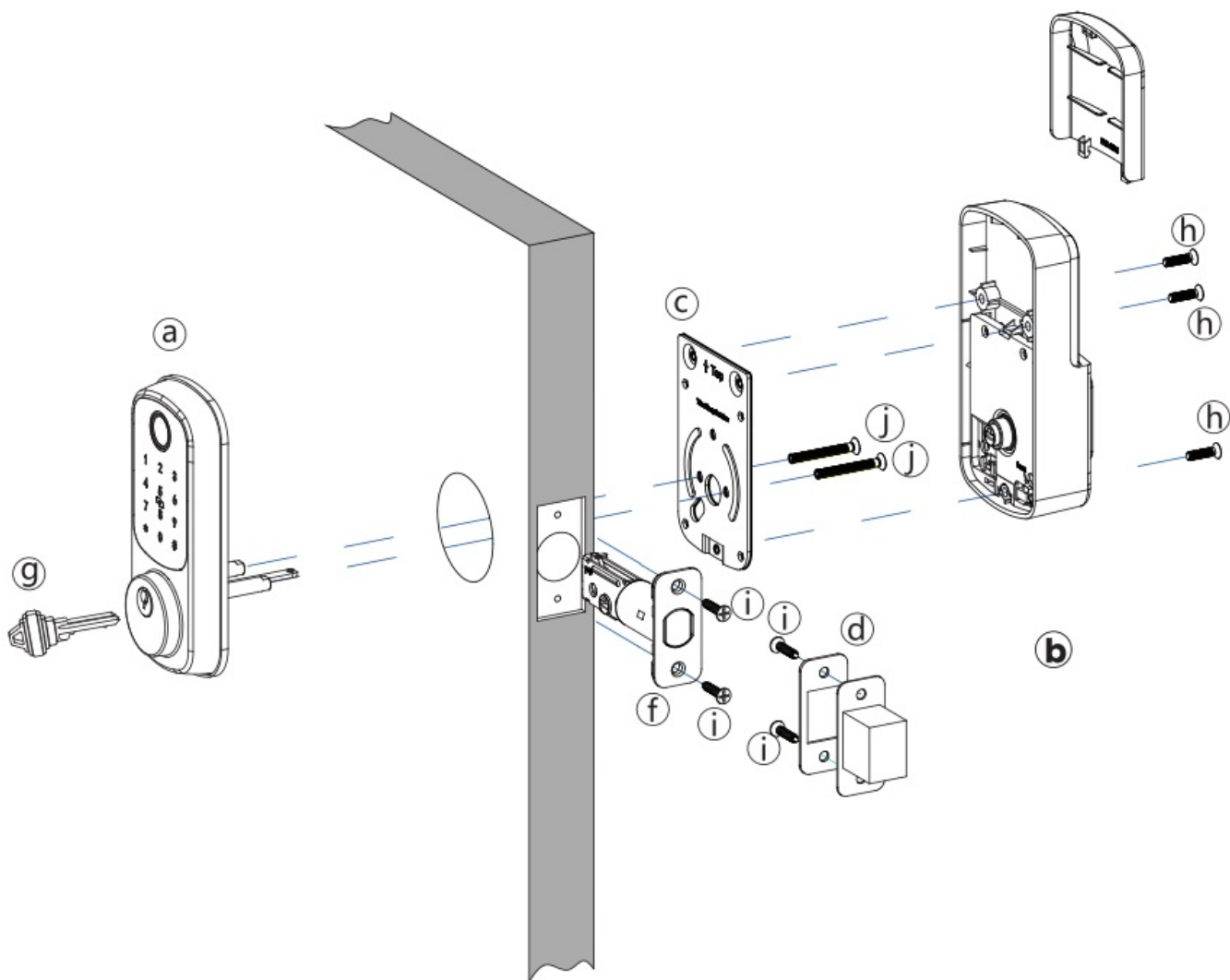
i. Deadbolt/Strike
Plate Screws



j. Mounting
Plate Screws



k. User Manual



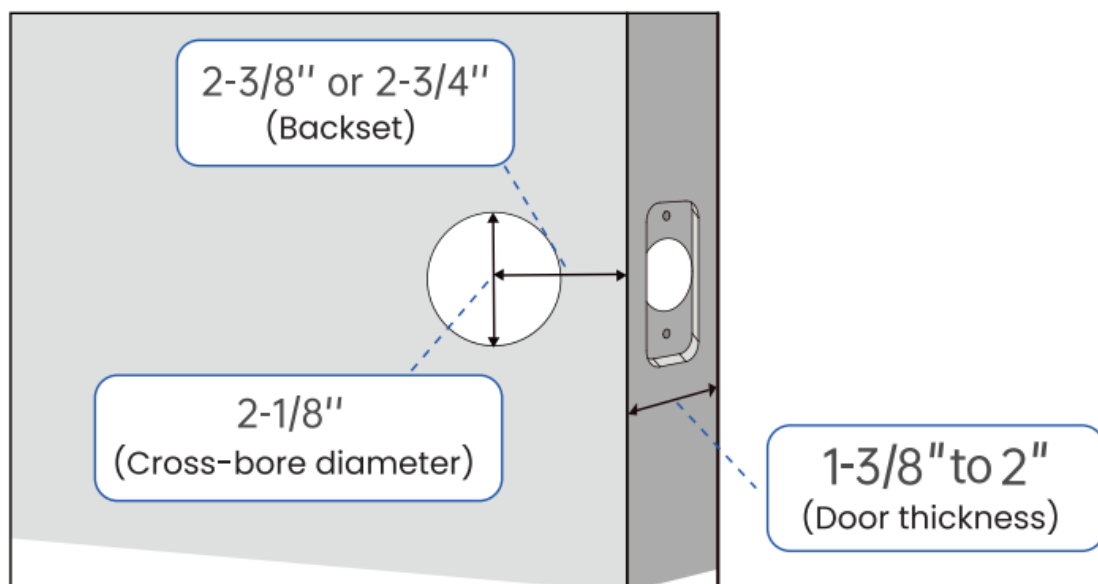
Product Details

Batteries	Detailed parameters
Power supply voltage	DC 4.5V ~ 6.0V
<u>Low voltage alarm voltage</u>	4.8V±0.1V
Standby current	90μA
Working current	<400mA
Working temperature	-30°C ~ +70°C
Keyboard type	Capacitive touch keyboard
Fingerprint type	Capacitive semiconductor sensor
Unlock modes	IC card / Mechanical key/eKey Alexa/ Google Assistant

How to Install the Lock

1. Measure the Door Size

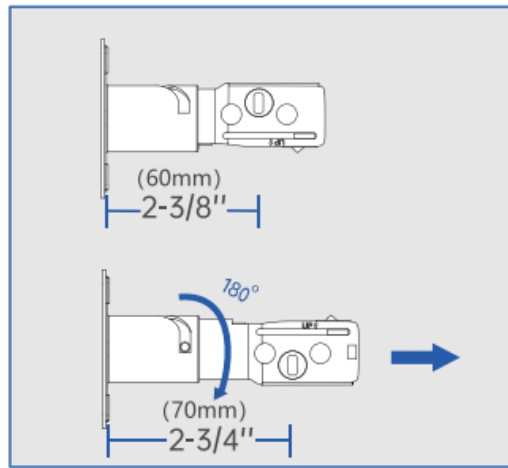
Make sure the door has a thickness of 1-3/8" to 2", a hole diameter of 2-1/8", and a measured backset size of 2- 3/8" or 2-3/4" with the deadbolt.



2. Adjust the Length of the Deadbolt

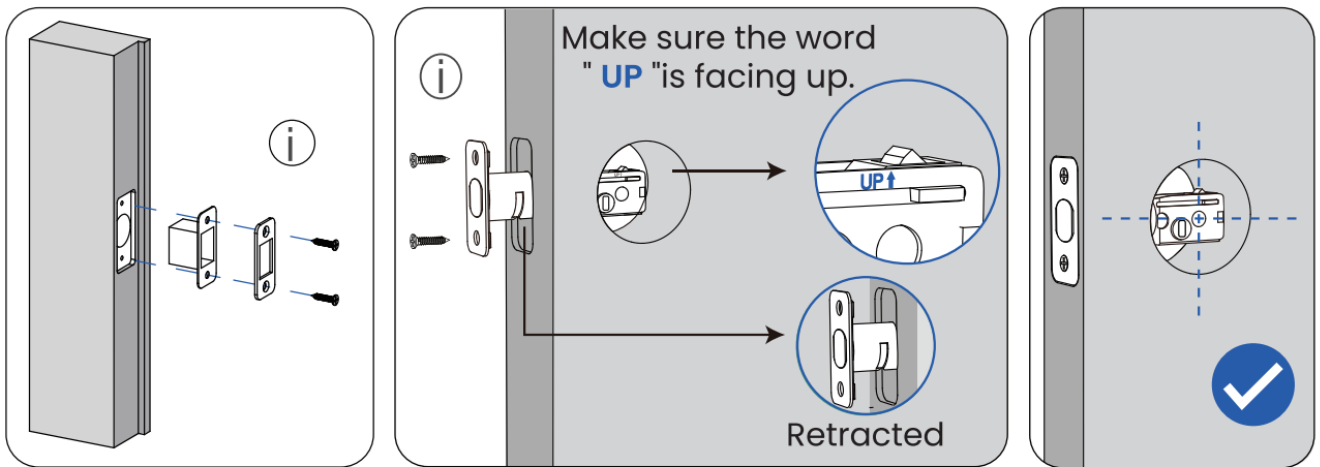
Check your door to see if the deadbolt requires adjustment.

If the backset is 70 mm, turn the faceplate 180° to extend the length.



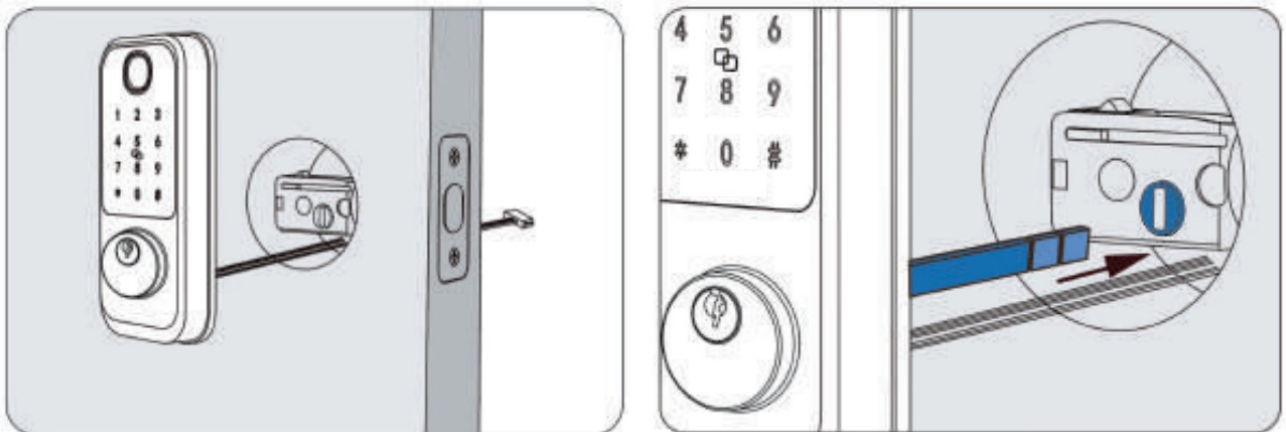
3. Install Deadbolt

Fix the deadbolt with 2 deadbolt screws CD and keep it retracted.



4. Install Exterior Lock

Route the cable below the deadbolt; the paddle must be in 'vertical' status.



Route the IC cable below : : the deadbolt.

NOTE:

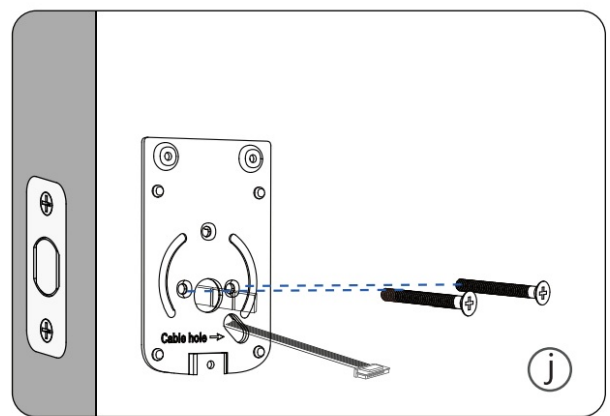
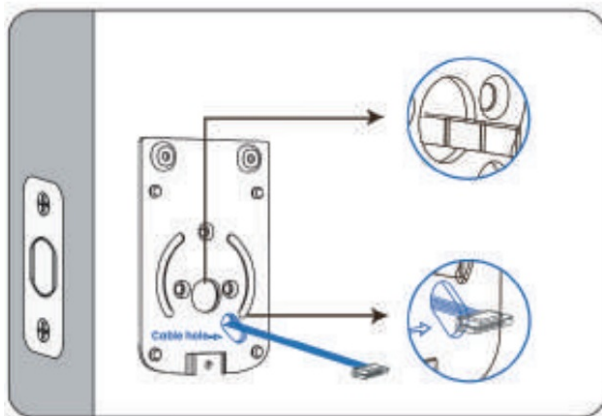
Do not insert the key during the installation.

NOTE:

The deadbolt must be in the : unlock position, and the paddle must be in 'vertical' : status.

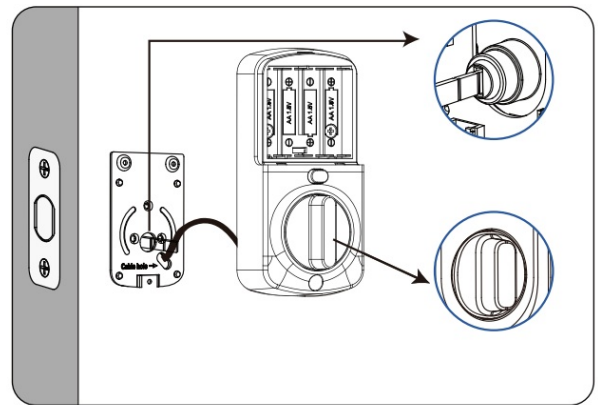
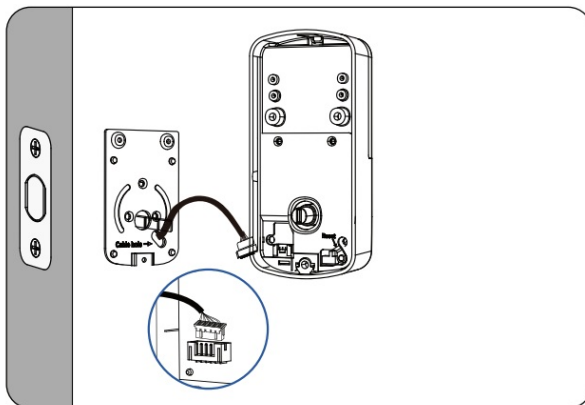
5. Fix the Mounting Plate

- Peel the tape off the mounting board and thread the cable through the hole in the mounting plate; ensure that the word “Cable Hole” is facing outward.
- Fix the plate with 2 mounting plate screws CD.



6. Install the Interior Lock

- Connect the cable securely.
- Turn the doorknob vertically and insert the paddle
- (Do not insert batteries until the lock is fully **installed**).

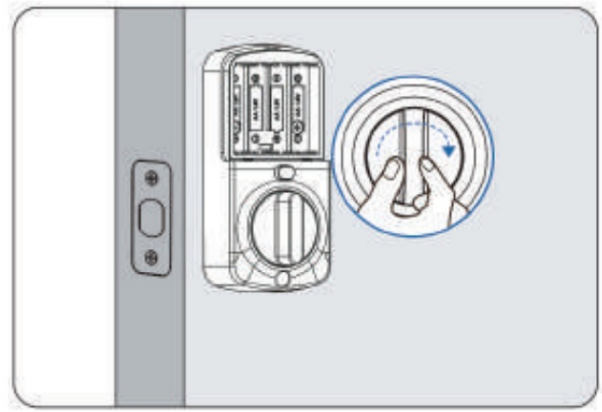
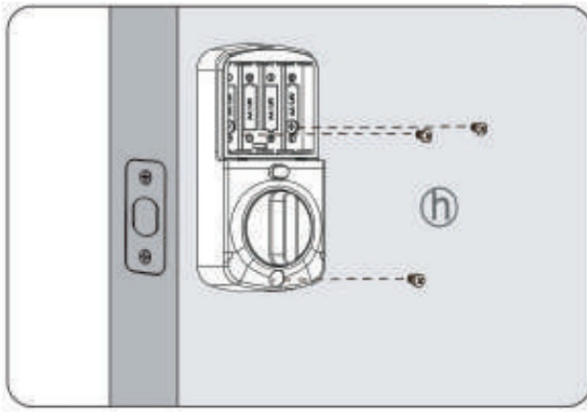


NOTE:

When pressing the indoor panel against the door, try to conceal the wires inside the door or place them in the designated wire-housing areas on the indoor panel.

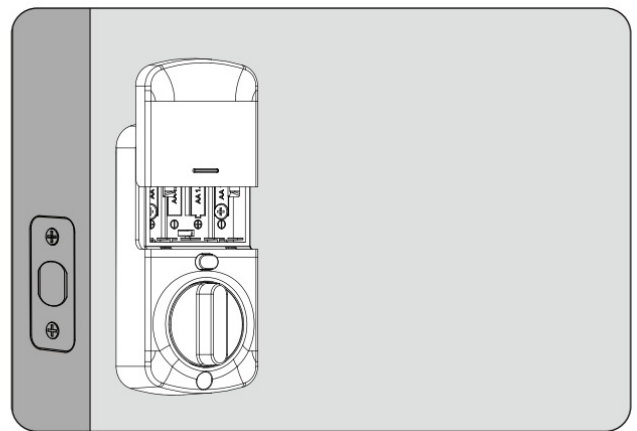
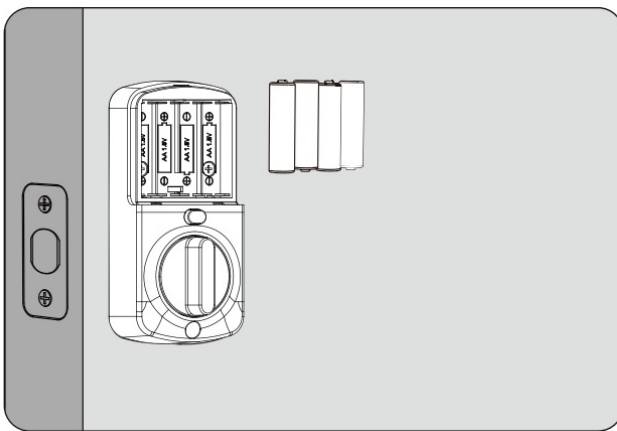
7. Fix the Interior Lock

- Open the battery cover.
- Secure the lock with 3 interior lock screws.
- Rotate the doorknob to test if the deadbolt can be smoothly extended and retracted h .



8. Install Batteries

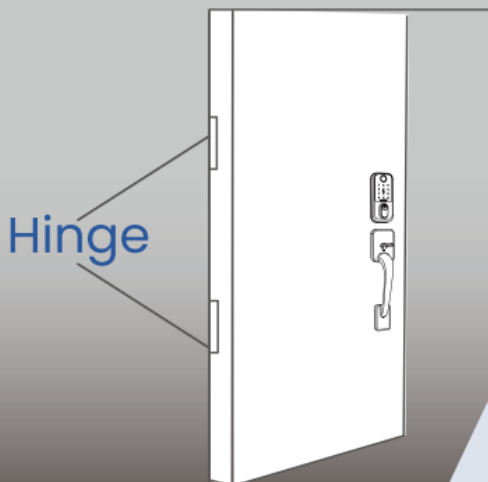
Please install 4 AA batteries while the door is unlocked and ensure it remains open to prevent getting locked out.



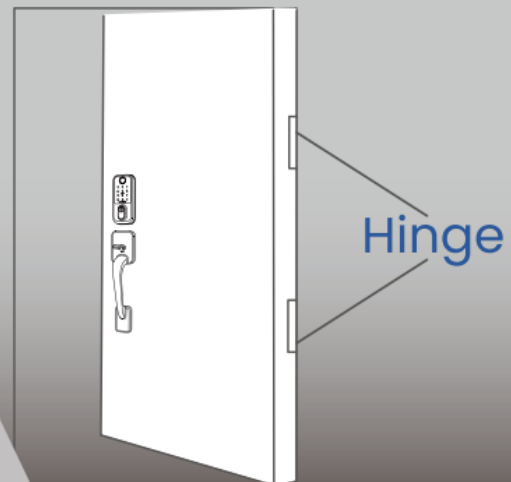
Detect Left/Right-hand Door

Set left/right-hand door

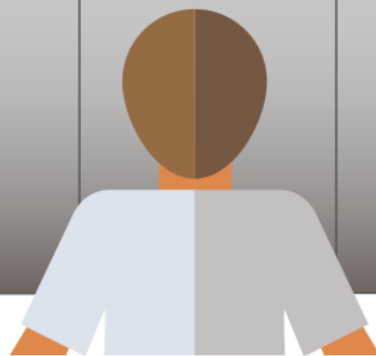
Left-hand Door:



Right-hand Door:



Hinge on the left



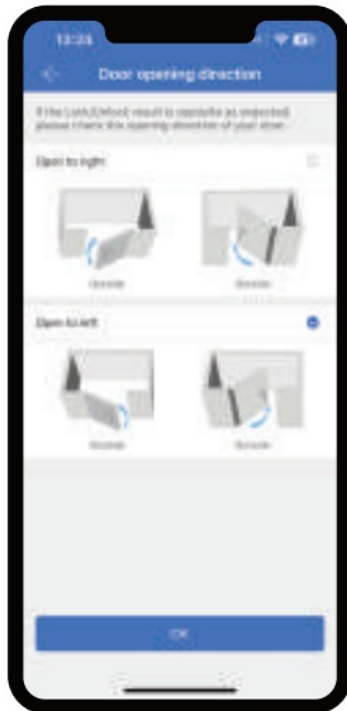
Hinge on the right

The most important step is to adjust the 'door opening direction' of this smart lock via phone App or programming code.

We recommend utilizing the TT lock App on your phone for an easier configuration process.

How to identify the direction your door opens?

Stand outside your door (facing the keypad) and locate the door hinge.



Hinge is on the left



Hinge is on the right

Scan me

APP download:



NOTE

1. Please register a TT Lock account and make sure the lock is paired with the TT LOCK App before you set the 'door opening direction' on the phone.
2. Refer to Pages 27-28 for detailed instructions on programming code.

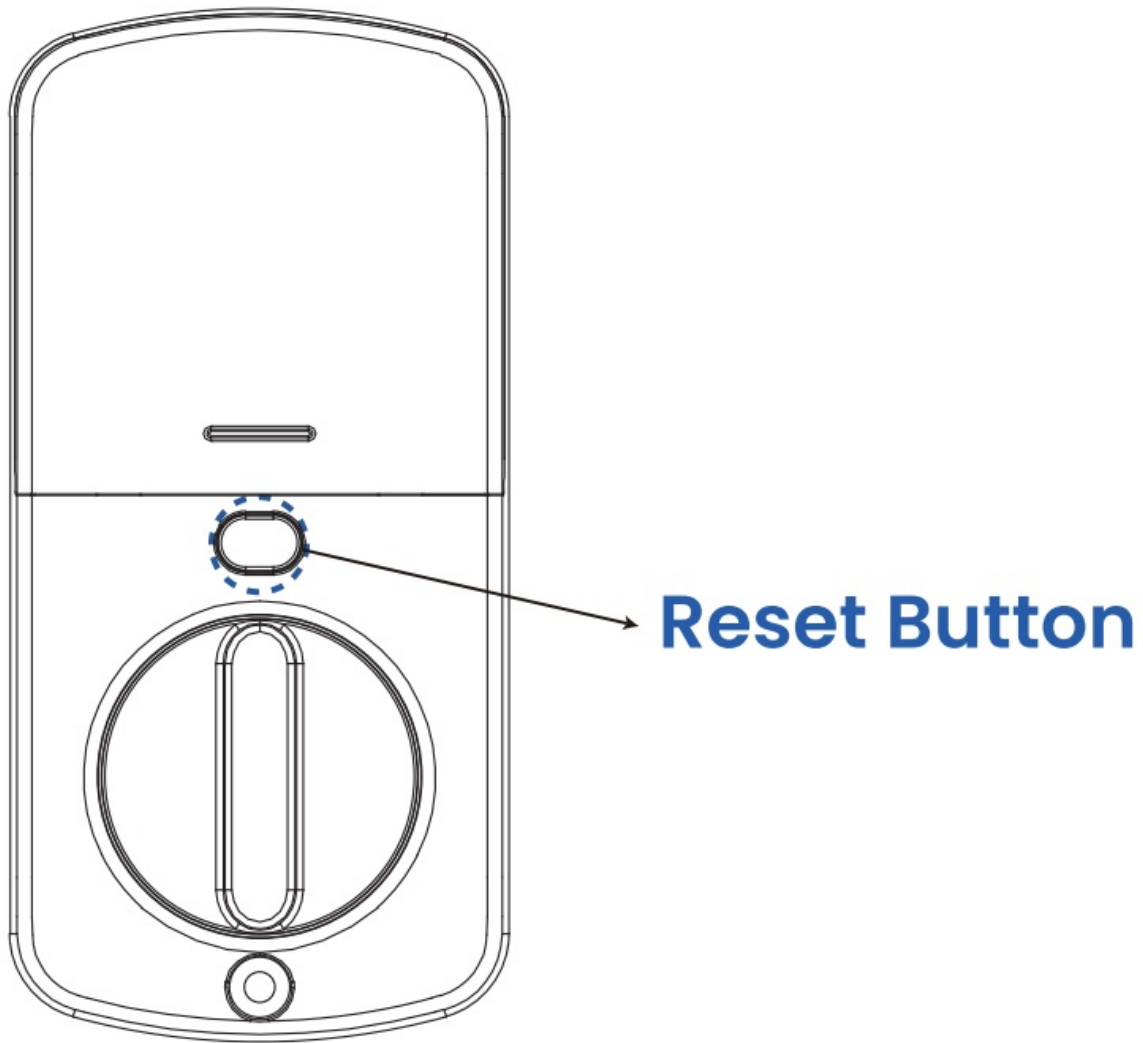
How to Reset the Lock

Reset method 1: (Recommended)

1. Remove a battery and wait for 5 seconds.
2. Put the battery back.
3. Long press the reset button for 10 seconds while the keypad lights up.
4. After hearing "Please input the initialization password", enter 000#.
5. Once you hear "Administrator deleted successfully", it indicates that the reset was successful.

NOTE

If method 1 doesn't work, please try method 2 or contact customer service for help.

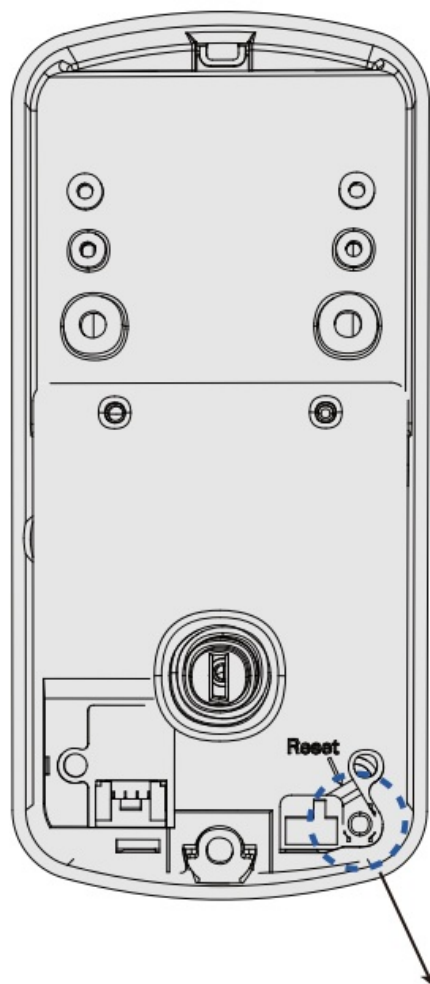


Reset method 2:

1. Uninstall the back lock by removing the battery cover and unscrewing the 3 screws on the back lock.
2. Load the batteries.
3. Hold the Reset Button (as illustrated below) for 5 seconds. You'll hear the sound "Input initialization passcode" from the lock.
4. Enter 000# on the keypad following the sound. If you hear "Administrator deleted successfully", it indicates that the reset was successful.

NOTE:

If this method doesn't work, please contact customer service.

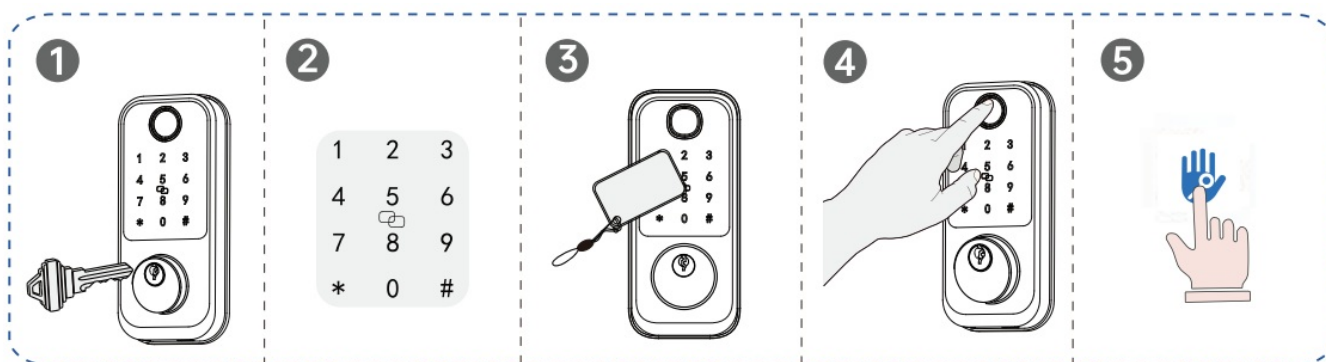


Reset Button

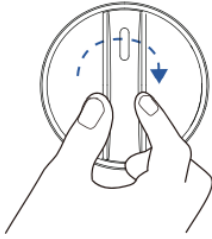
Quick Guide of Use the Lock

Your lock is now installed! Let's learn to use it!

Unlock the door from outside



Unlock the door from inside



Rotate the turn piece to the unlock position



TT Lock App

Lock the door from outside

1. Hold "#" on the keypad for 2 seconds.
2. In auto lock mode, the bolt will extend out automatically.
3. Lock with physical keys.
4. Lock via App on the phone.

1	2	3
4	5	6
7	8	9
*	0	#

Lock the door from inside

1. Rotate the turn piece to the lock position.
2. Lock via App on the phone.

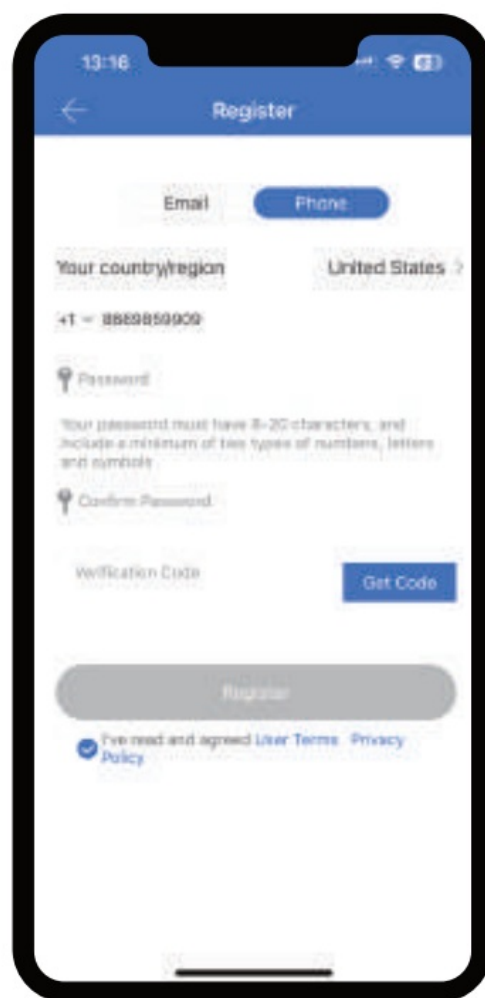
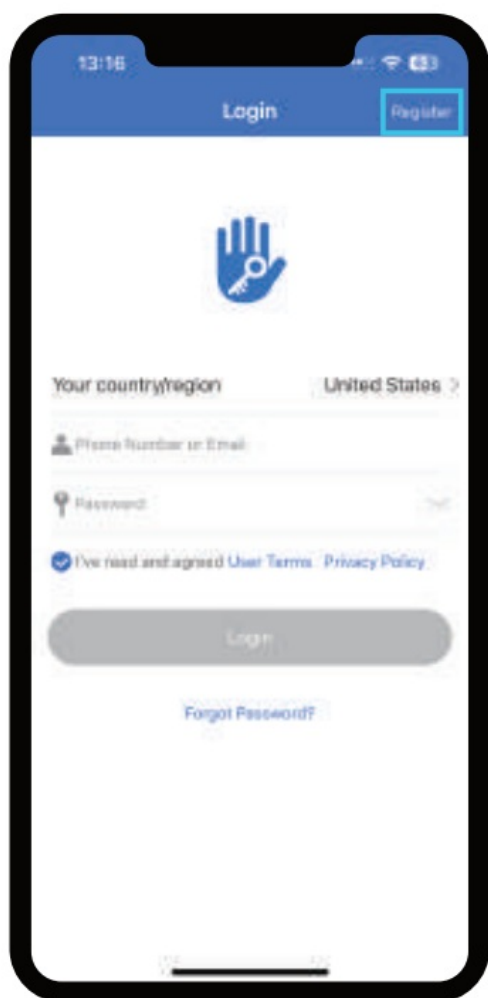
How to use it by APP

Account Registration

1. Download the Smart Lock app from Google Play or APP Store.
2. Search "TT Lock".



3. Click Register to get started.
4. Enter the email or phone number (e.g. 8669859909), set the password, click Get Code, and enter the verification code (make sure that the correct Country/Region is selected).



How to use it via App

Pair the lock with TT LOCK App

Step 1: Click “Big plus”. Make sure that your phone’s Bluetooth is enabled and that you are close to the lock within 3 meters.



Step 2: Touch the keypad and click “Next”.

Step 3: Click the blue plus sign to add the lock. Please specify a name for the lock, such as “front door”.



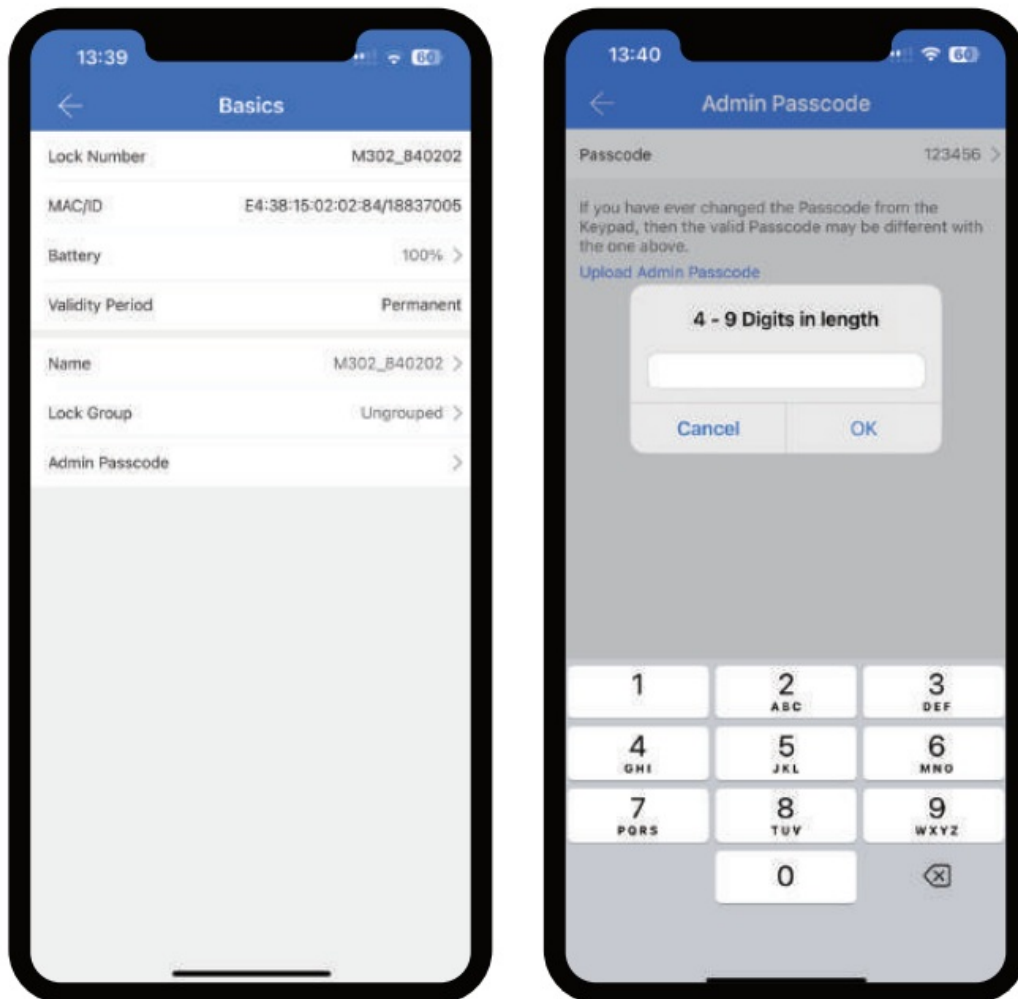
Step 4:

NOTE:

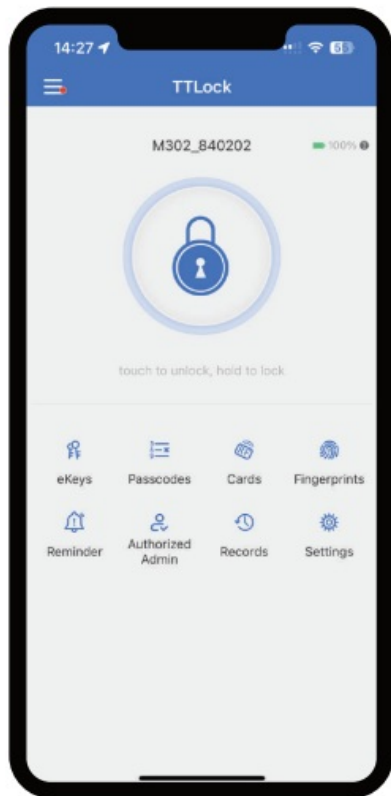
The default code (123456#) will become invalid once pairing is successful.

Set your new Adm in passcodes:

Click Settings > Basics > Ad min Passcode.



Overview of App Features



Unlock/Lock

Unlock/lock via phone's Bluetooth



Remote Unlock

Unlock remotely if G2 Gateway is connected nearby



eKeys

Others can control the lock via the App



Passcodes

Generate 5 different types of passcodes



Cards

Set up your fobs here



Fingerprints

Set up fingerprints



Reminder



Authorized Admin

Create and edit admins



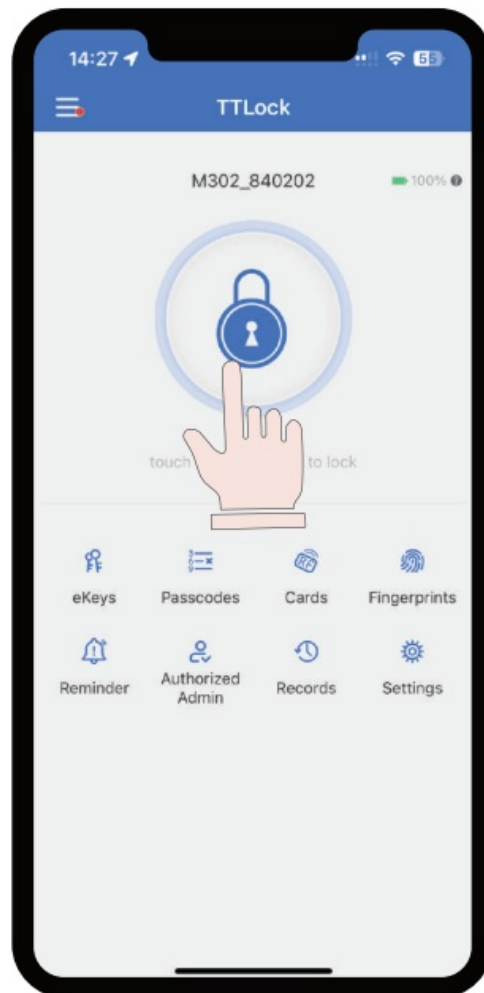
Records

View entry times, attempts, and methods Set auto lock and passage mode here



Settings

Unlock/Lock via APP



Unlock: Tap this large icon once.

Lock: Long press this large icon for a few seconds.



Tap to remotely unlock

(Additional G2 gateway required)

Share eKeys

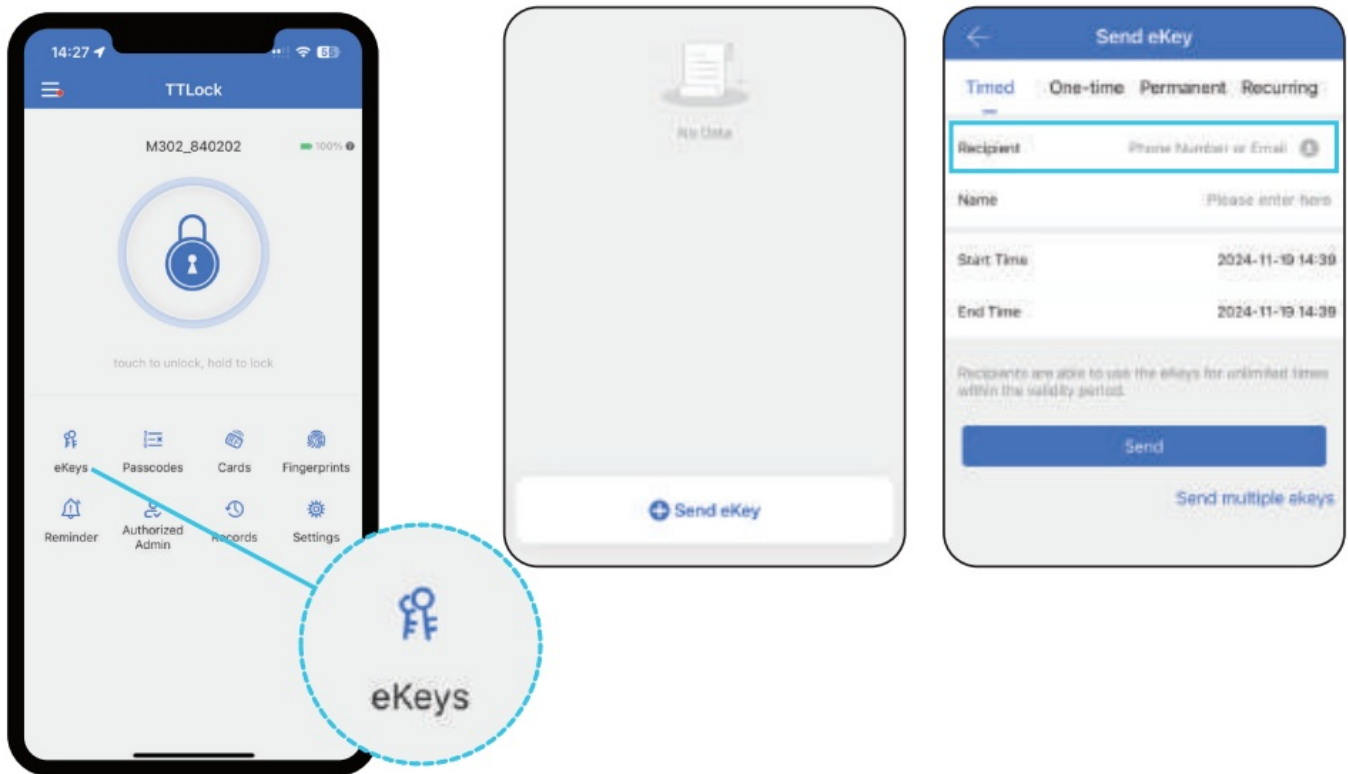
NOTE:

Unlike passcodes, eKeys mandate that other users download the TT Lock app in order to lock/unlock via the app as well.

Step 1: eKeys work by sharing App access to your lock with another TT lock account. eKey recipients will also be able to use their phone to unlock/lock the smart lock.

Step 2: Enter the recipient's account, which can be either the phone number or email address used during registration.

Step 3: The recipient needs to log into their TT Lock account and retrieve the code from their messages to gain the privilege to lock/unlock.



Share eKeys

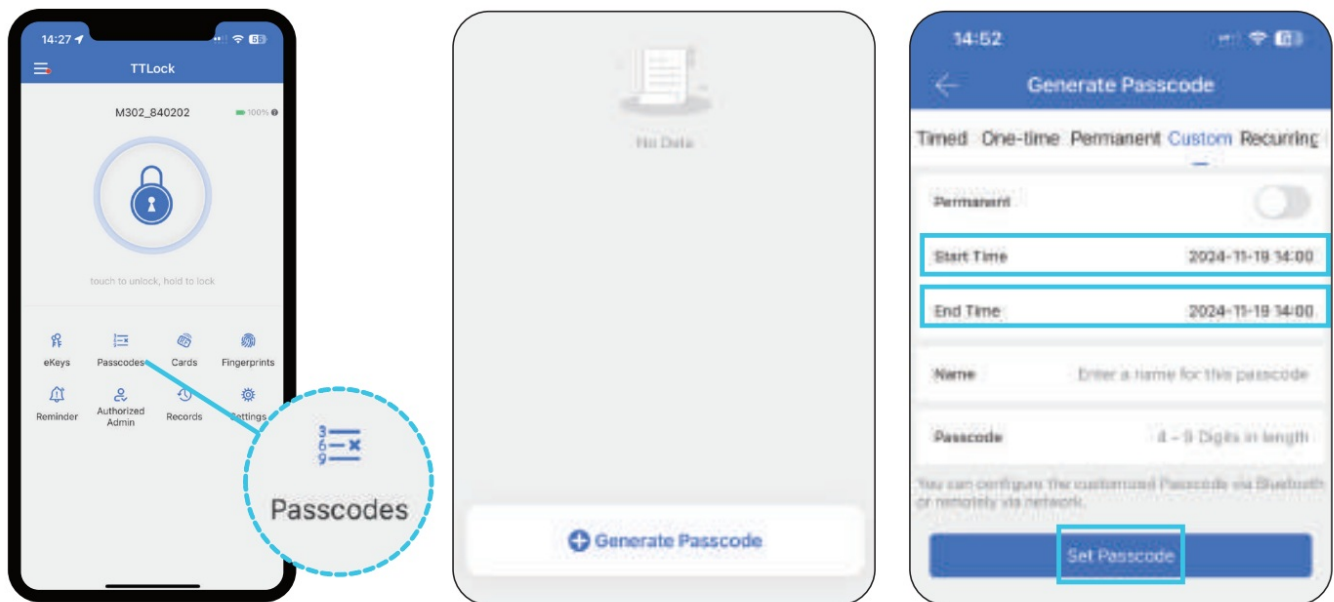
Step 1: Click Passcodes to access the code page.

Step 2: Click Generate to set a passcode.

Step 3: Name your code > set time duration > set 4-9 digits

NOTE:

To generate custom codes or change any type of code, please make sure you are within 3 meters of the lock and have Bluetooth activated, unless the G2 gateway is available and connected.



Here are some illustrations for 6 different codes.

Timed	Lasts between selected hours
One-time	Lasts for one use
Permanent	Lasts permanently
Custom	Set your own digits, such as 123456 (permanent or timed)
Recurring	Lasts during scheduled hours weekly
Erase	Erases all codes on the lock

Share eKeys

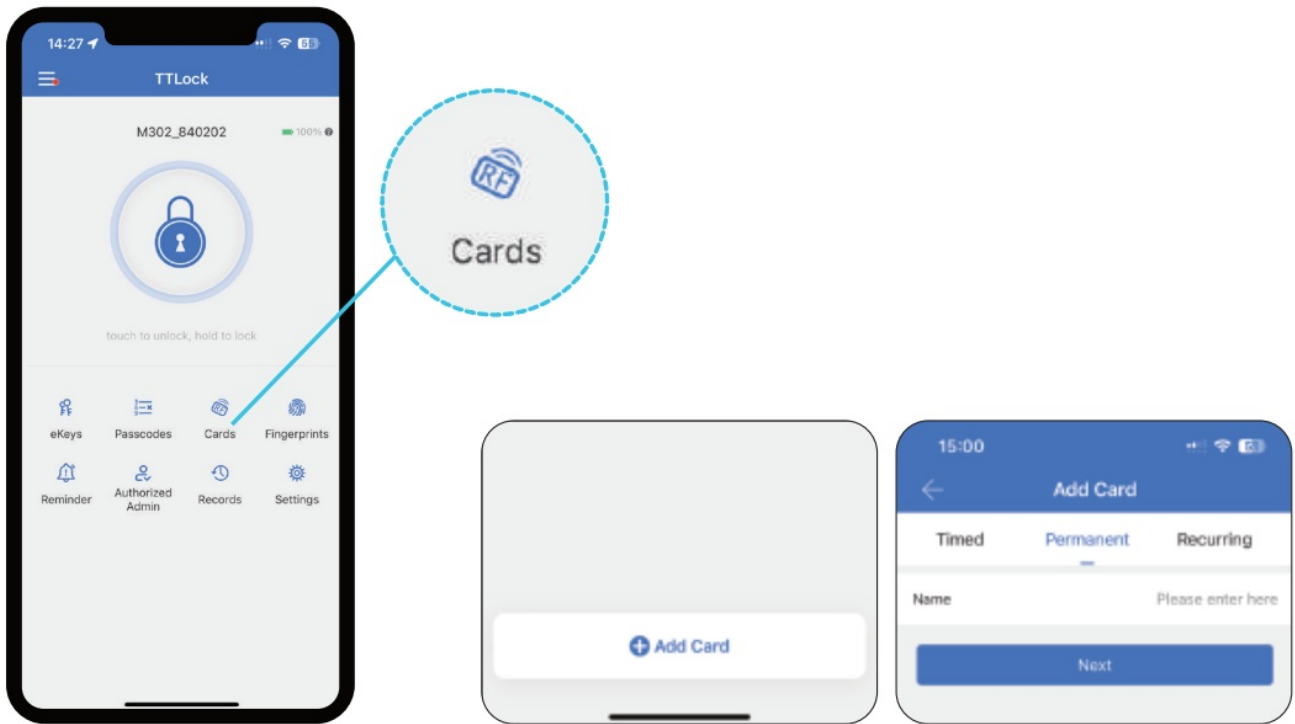
Step 1: Click “Cards”.

Step 2: Click “Add Card”.

Step 3: Set up the valid period of the IC card.

Step 4: Upon receiving the message “Please swipe your card” from the lock > place the IC card against 5 on the keypad.

Step 5: Once you hear a prompt voice saying “input successful”, the IC card is all set to unlock your door.



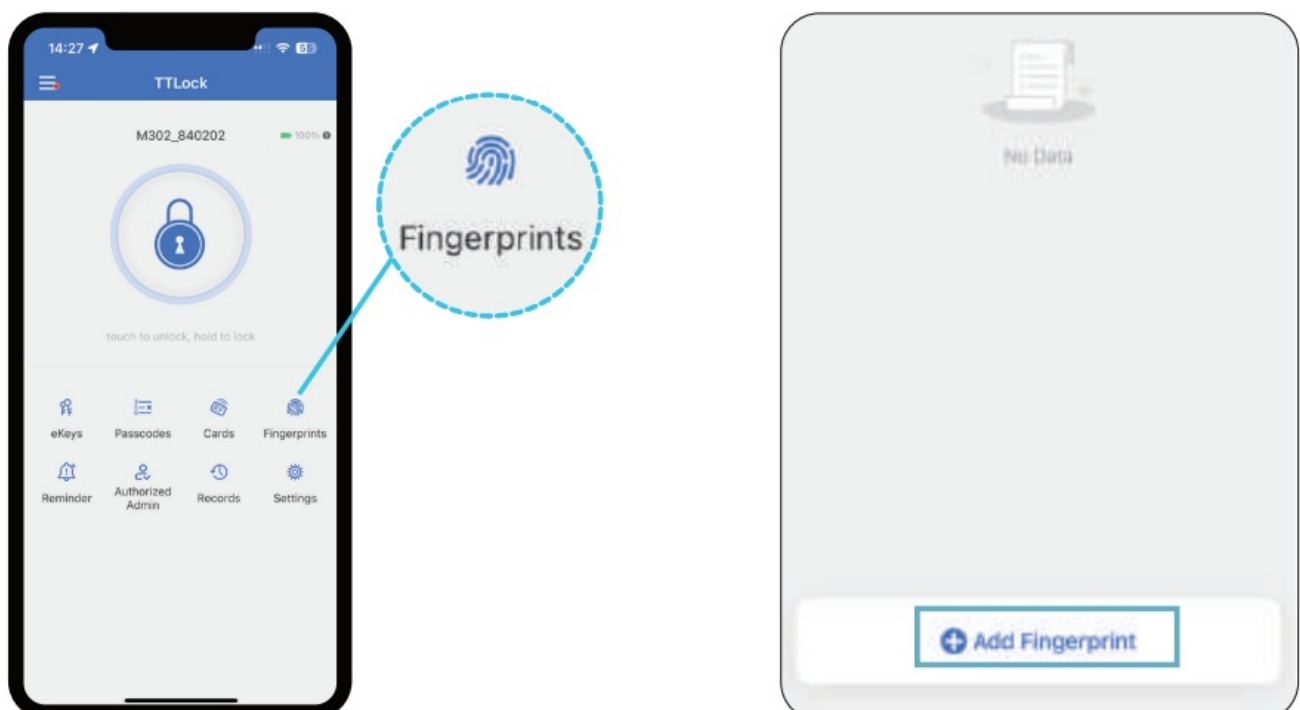
Add Fingerprints

Step 1: Tap on “Fingerprints”.

Step 2: Tap on “Add Fingerprint”.

Step 3: Set up the validity period of the fingerprint.

Step 4: Follow the instructions on the app. You will be asked to place your finger on the sensor 4 times.



← Add Fingerprint

Timed Permanent Recurring

Name Please enter here

Start Time 2024-11-19 15:07

End Time 2024-11-19 15:07

The Fingerprint can be used for unlimited times within the validity period.

Next

← Add Fingerprint

You will be required to Place your Finger to the Sensor several times. Please follow the prompts...

Start

Authorized Admin

NOTE:

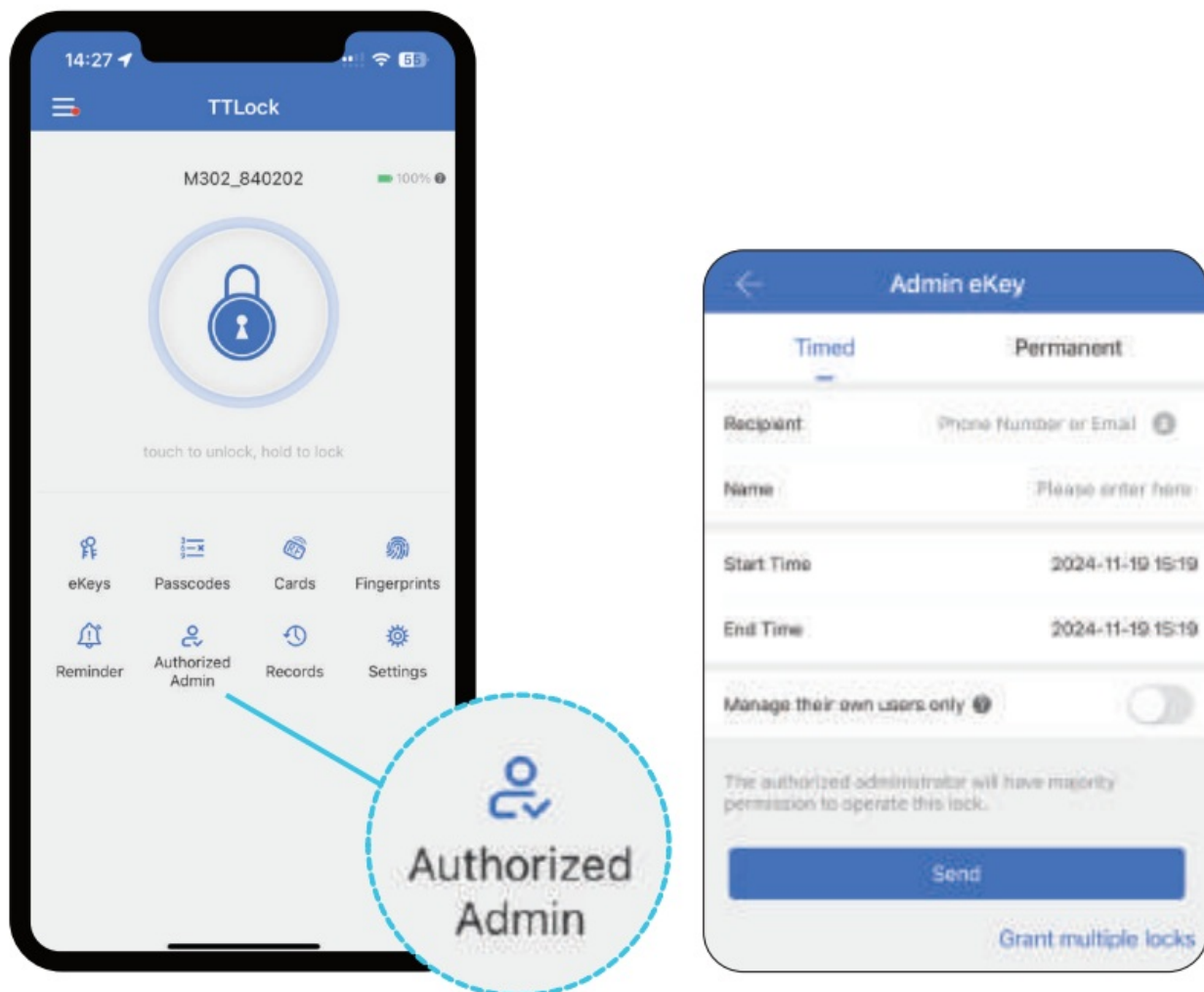
Authorized Admin functions like eKeys but has more rights than eKeys.

An authorized admin can do the following:

1. Unlock/lock via the App.
2. Generate/ edit/ delete passcodes/IC card/fingerprints.
3. Adjust settings like passage mode, auto-lock timer, and turn on/off the lock sound.

Step 1: Click Authorized Admin.

Step 2: Enter the recipient's account, which can be either the phone number or email address used during registration.



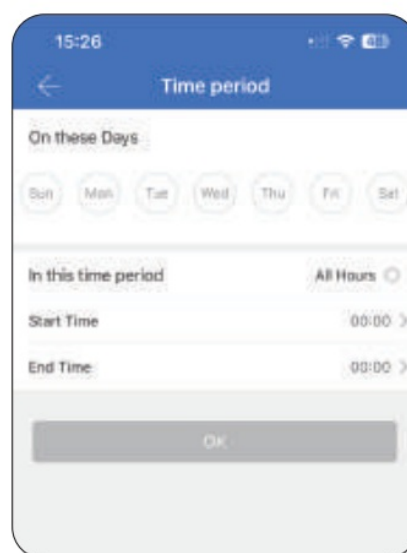
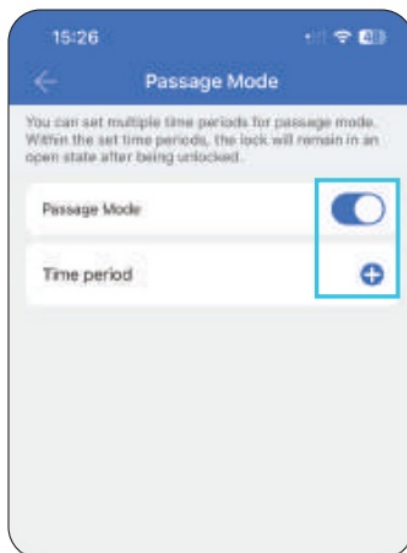
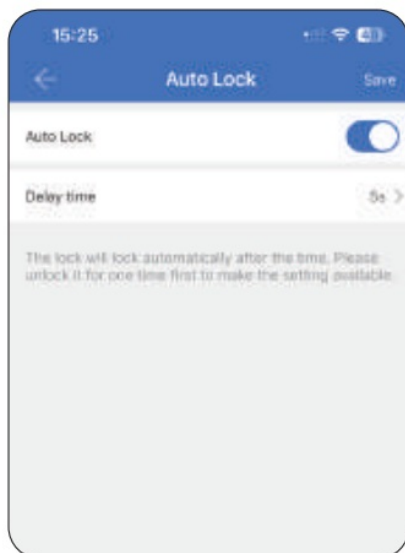
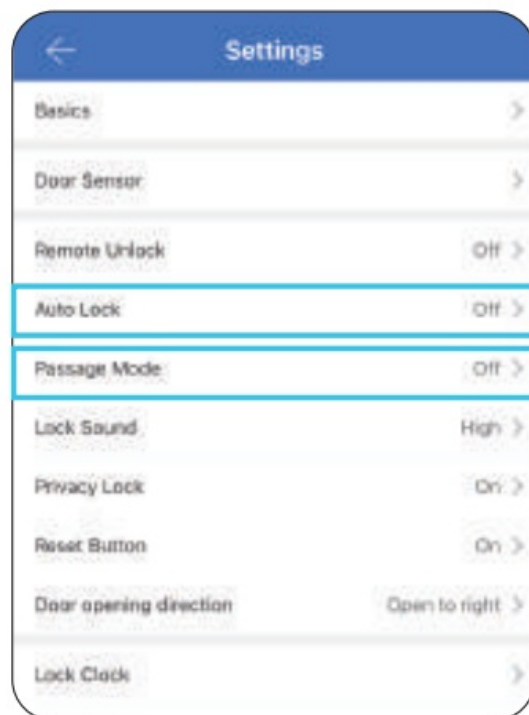
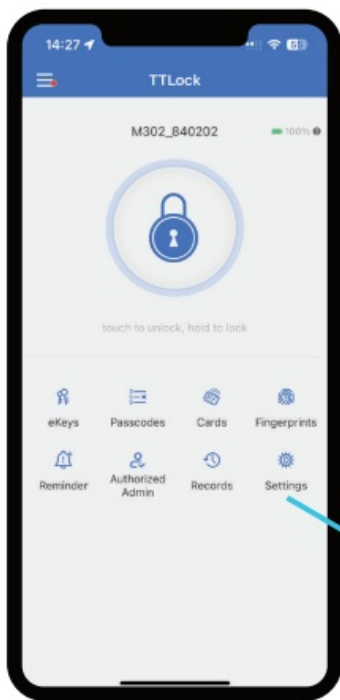
Auto Lock/Passage Mode

Auto Lock:

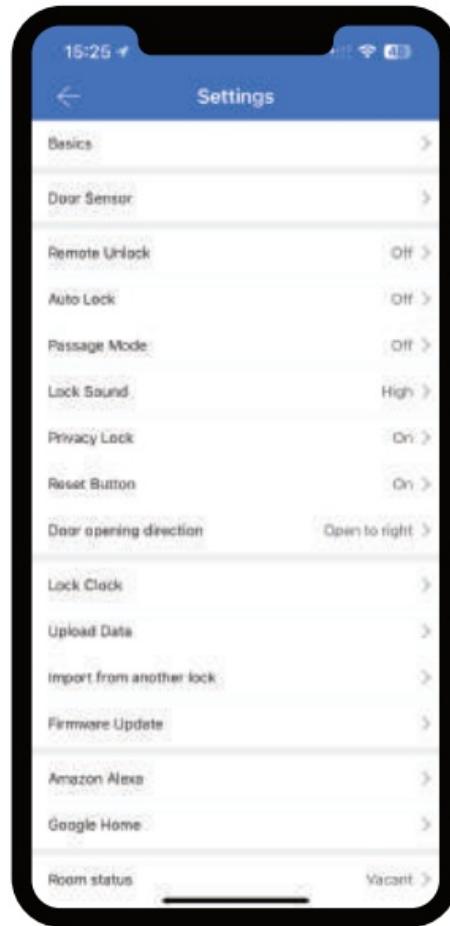
Tap “Settings” > Tap “Auto Lock” > By default, Auto lock will automatically lock the door 5 seconds after it is opened.

Passage Mode:

Tap “settings” > Tap “passage Mode” > Set up the specific time period > During the specific time period, the lock remain unlocked until it is manually locked (Auto lock will be disabled during Passage Mode validity period) .



Lock setting



- **Basic:**

You can view and set basic information such as lock name.

- **Remote Unlock:**

Allows you to unlock the smart lock remotely via a gateway. This feature can only be turned on/off via Bluetooth.

- **Lock Sound:**

Turn on/off the sound of the lock. Adjust the lock prompt voice volume.

- **Privacy Lock:**

Turn on/off using the reset button on the back panel. This feature blocks unauthorized access from outside.

- **Reset Button:**

Turn on/off the reset function using the reset button on the back panel.

- **Door opening direction:**

If your door lock/unlock function is not working as intended, you can adjust this feature.

- **Import from a another lock:**

Enables the sharing of eKeys, authorized Admin passcodes, and IC Cards between

locks.

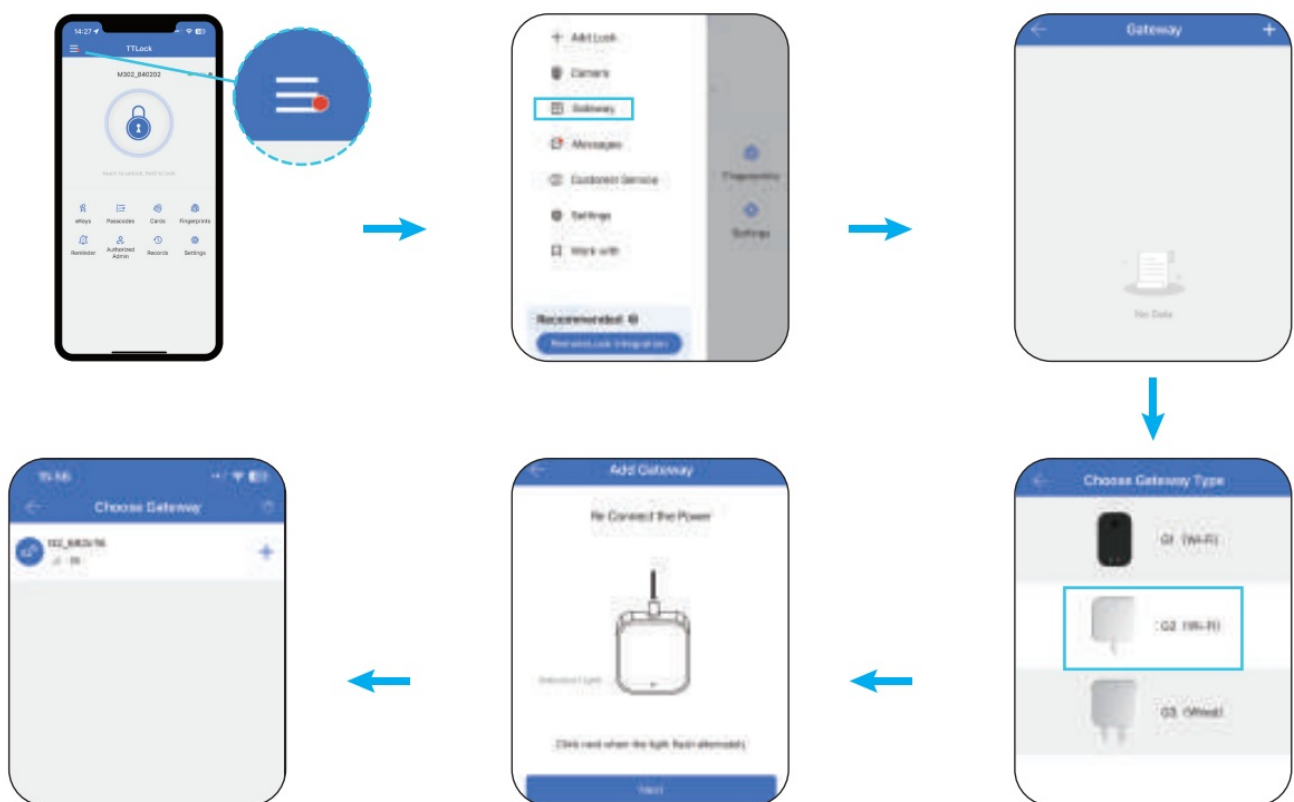
How to pair Gateway, Alexa

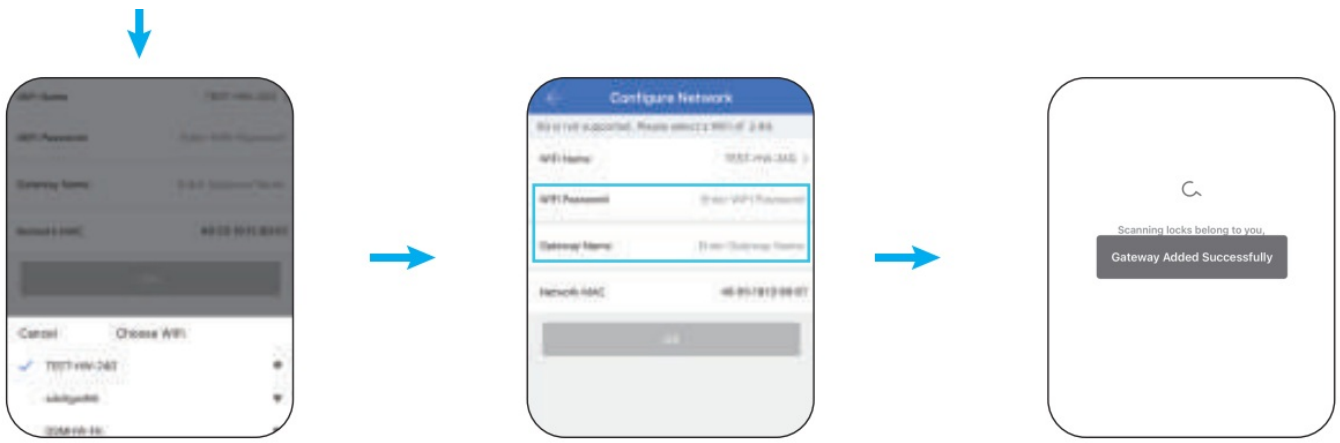
Pair the Gateway

After paring, check the signal: click “Gateway” > choose the gateway connected > Nearby locks > check if the signal is strong > move the gateway closer to lock if the signal is weak.

Ensure that the smart lock is no more than 16 feet away from the gateway and that both your phone and the gateway are connected to the same Wi-Fi network (The gateway only works with 2.4 GHz Wi-Fi).

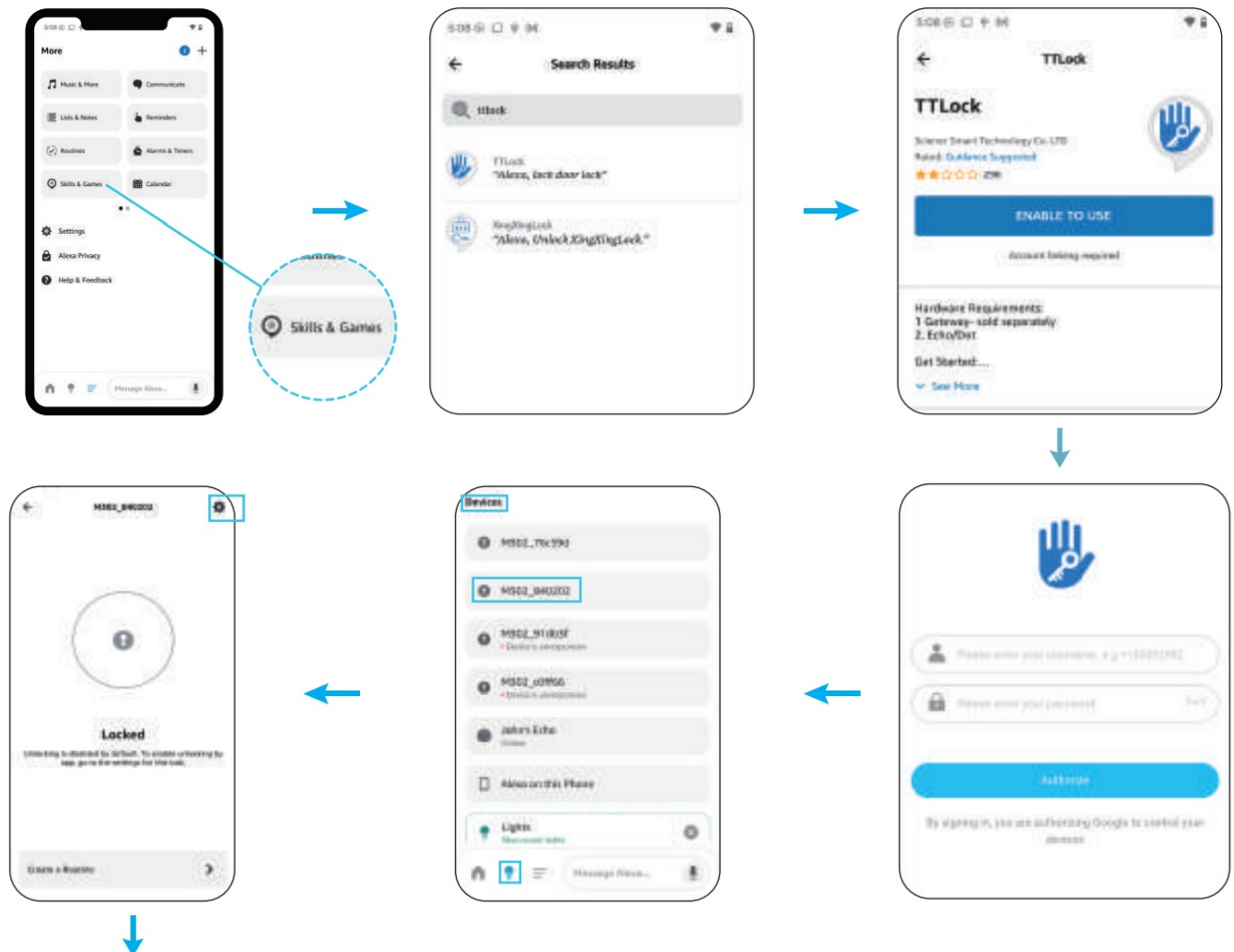
If your Wi-Fi connection supports 5G, you can also configure and add 2.4Ghz Wi-Fi with dual-band router.

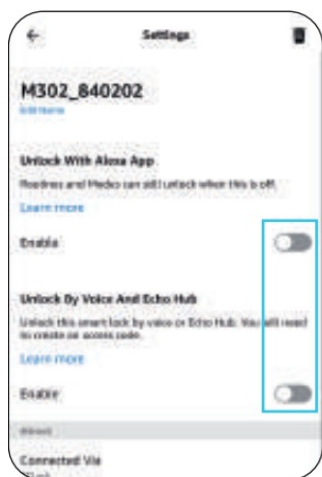




Pair the Alexa

Press Settings (on the upper right) > Turn on “Unlock By Voice And Echo Hub” and set the code to unlock by voice every time .





How to program using the keypad

- * = Go back to the previous step
- #: Press for 1 second to confirm; long press for 2 seconds to lock the door
- Default admin passcode: 123456#

Type	Method
Modify Admin Passcode	A: *12# > default admin passcode# > new admin passcode# > new admin passcode# B: Go to TT Lock App > Settings > Basics > Admin code > Modify New passcode
Set General Passcode	*85#admin passcode#new passcode
Modify General Passcodes	*10#original passcode#new passcode#new passcode#
Set Fingerprints	*85#admin passcode#collect fingerprints
Set IC cards	*85#admin passcode#add IC cards
Delete all Passcodes	*71#admin passcode# (note: admin passcode won't be deleted)
Delete all Fingerprints	*70#admin passcode#
Delete all IC cards	*69#admin passcode#
Delete single passcode	*72#admin passcode#the passcode you want to delete#

Type	Method
Set left-hand lock	Standing outside the door (facing the keypad), if the door hinge is on the left side: *46#Admin Password#1#
Set right-hand lock	Standing outside the door (facing the keypad), if the door hinge is on the right side: *46#Admin Password#2#
Open the door temporarily	Input 123# after unlock the door
Auto lock	*21#admin passcode#1-900# (1-900 seconds is the auto lock time)
Turn on/off the lock voice	*30#admin passcode#1# (turn on) #0# (turn off)
Set English as the language	*39#admin passcode#2#

FCC Caution

This device complies with part 15 of the FCC Rules. Operation is subject to the following two conditions:

1. This device should not create harmful interference, and
2. This device must be able to handle any interference it receives, even if it disrupts its operation.

Any changes or modifications not expressly approved by the party responsible for compliance could void the user's authority to operate the equipment.

NOTE

This device has been tested and found to comply with the limits for a Class B digital device, pursuant to part 15 of the FCC Rules. These limits are designed to provide reasonable protection against harmful interference in a residential installation. This device produces and emits radio frequency energy, and if not installed and operated as instructed, it could disrupt radio communications. However, there is no guarantee that interference will not occur in a particular installation. If this device result in interference to radio or television reception, which can be identified by power cycling the equipment, the user is advised to attempt to resolve the interference using the following steps:

- Reorient or relocate the receiving antenna.
- Increase the distance between the equipment and receiver.
- Connect the device to a circuit that is different from the one the receiver is using.
- Consult the dealer or an experienced radio/TV technician for help.

This device complies with FCC radiation exposure limits set forth for an uncontrolled environment. This device should be installed and operated with a minimum distance of 20 cm between the radiator and your body.

- www.desloc.com
- +1 (888)5726136
- support@desloc.com
- 12-month warranty

FAQ


Installation

Questions	Answers
How to adjust the left- or right-hand door?	A. Go to TT Lock App > Settings > Door opening direction > Choose left- or right-hand door
How to modify the passcode?	A. Go to TT Lock App > Settings > Basics > Admin passcode > Modify
How to set the auto lock timer?	<p>A. Go to TT Lock App > Settings > Auto lock > Set timer</p> <p>B. After setting, activate it by locking the door manually from the inside one time.</p> <p>NOTE: Auto lock is only triggered when you use digital unlock like fingerprint/keypad/TT Lock. It won't work if unlocked manually.</p>
How to make sure the door is open at a specific time?	<p>A. Go to TT Lock App > Settings > Passage mode > Set timer</p> <p>B. After setting, activate it by unlocking the door manually from the inside one time .</p> <p>NOTE: The passage mode is only triggered when you use digital lock like fingerprint/keypad/TT Lock. It won't work if locked manually.</p>
Why can't the deadbolt be fully retracted?	Please follow the steps to re-install the lock correctly.
Why doesn't the lock work when I use fingerprints or passcodes to unlock/lock it?	<p>Please check if the motor makes sounds when you unlock or lock by keypad or fingerprints.</p> <p>If the motor doesn't make sounds, please contact our customer service team.</p>

Questions	Answers
Can I remotely share a guest passcode/eKey/admin with visitors?	Yes, you can generate remotely and share the passcode/eKey/admin with visitors even far away from the home (without Wi-Fi). NOTE: The activation of Bluetooth and close proximity to the lock or G2 gateway is required only when you are changing Custom Code.
If the batteries run out, can I still use the key to enter?	Yes, you can open the lock with a mechanical key, and you can also use a type-C cable connecting the lock to charge it.
Why can't I unlock/lock using Wi-Fi on my phone?	You can unlock/lock via Bluetooth on the phone. Wi-Fi unlock/lock remotely requires the purchase of an extra G2 gateway.
Why can't I connect it with Alexa or Google Assistant?	A. Make sure you have purchased the G2 gateway . B. Follow the steps to Connect the G2 gateway correctly, making sure the gateway status is online and the signal is strong (check this on the TT Lock app). C. Follow the steps to connect Alexa or Google Assistant correctly.
Fingerprints is not sensitive and often malfunctions.	A. Delete the fingerprint and add it again. B. Go to TT Lock App > Fingerprints > Choose to delete > Add the new one. C. Ensure your finger is fully pressed on the reader to capture multiple angles of your fingerprint.
Why can't I register my account on the TT Lock app using my phone number?	Please choose the country code as a prefix, for instance, United States country code is +1, then input your phone number.

Questions	Answers
Cannot pair the lock with App.	<p>A. Activate Bluetooth and stay close to your lock > Open the TT Lock App > Click "+" button > Choose "All Locks" > Touch the lock keypad to light it up > Click the "+" to add the lock while waking up the keypad.</p> <p>B. If no lock shows up (all grayed out), please reset your lock.</p> <p>C. Follow the above steps to add the lock again after the reset.</p> <p>NOTE: Reset steps can be found on Page 11</p>
Once the new battery is installed, the App indicates that the battery level is inaccurate.	<p>A. Go to TT Lock APP > Go to the Settings (home page) > Basics > Battery > Update.</p> <p>B. If it still fails, Open the TT Lock App > Click Settings > Click Basic > Lock Number, and then send it to customer service for updating.</p>
How can I use the keypad to lock/unlock?	<p>Lock: Wake up the keypad and press # for 2 seconds.</p> <p>Unlock: Wake up the keypad and input passcodes #.</p>
The lock operates in reverse, with lock becoming unlock and unlock becoming lock.	Go to TT Lock APP > Settings > Door opening direction > Right/left opening.

Documents / Resources

	<p>DESLOC B200 Smart Fingerprint Deadbolt [pdf] User Manual</p> <p>B200, B200 Smart Fingerprint Deadbolt, Smart Fingerprint Deadbolt, Fingerprint Deadbolt, Deadbolt</p>
---	--

References

- [User Manual](#)

🔍 B200, B200 Smart Fingerprint Deadbolt, Deadbolt, DESLOC, Fingerprint Deadbolt, Smart Fingerprint

📁 DESLOC Deadbolt

Leave a comment

Your email address will not be published. Required fields are marked *

Comment *

Name

Email

Website

☐ Save my name, email, and website in this browser for the next time I comment.

Post Comment

Search:

e.g. whirlpool wrf535swhz

Search

[Manuals+](#) | [Upload](#) | [Deep Search](#) | [Privacy Policy](#) | [@manuals.plus](#) | [YouTube](#)

This website is an independent publication and is neither affiliated with nor endorsed by any of the trademark owners. The "Bluetooth®" word mark and logos are registered trademarks owned by Bluetooth SIG, Inc. The "Wi-Fi®" word mark and logos are registered trademarks owned by the Wi-Fi Alliance. Any use of these marks on this website does not imply any affiliation with or endorsement.